

# HIGHPOINTS

Second Class Postage Paid  
High Point, N.C.  
27262

Published six times annually by High Point College, 933 Montlieu Avenue, High Point NC 27262. Subscription \$1.00 per year payable by the College. Send change of address to above mailing address. Raymond A. Petrea, Editor; Robert E. Williams, Director of Alumni Affairs.

**Member**  
Council for Advancement & Support  
of Education

*Address Correction Requested*



**THE LADY PANTHERS:** (seated) Wendee Saintsing, Greensboro; Wanda Wilson, Thomasville; Wanda Walton, High Point; Germaine McAuley, Troy; and Robyn Cooper, Greensboro; (standing) Coach Jennifer Alley; Wilma Moran, Bayamon, Puerto Rico; Marie Riley, Selden, New York; Vic-

kie McLean, High Point; Sylvia Chambers, Greensboro; Gracie Simmons, High Point; Karen Christofferson, Holbrook, New York; Karen Koelsch, Leonardo, New Jersey; and Ethel White, Greensboro.

## *Volleyball team wins state, conference titles*

THE WOMEN'S VOLLEYBALL TEAM crowned a successful season by winning the conference title for the second consecutive year, the NCAIAW state title, the Region II title, and then they participated in the national volleyball finals in Los Angeles.

Conference Coach-of-the-Year Jennifer Alley took the Panthers to a 32-9 record for the year. Wanda Wilson, Wanda Walton, Marie Riley, and Karen Christofferson were selected all-conference with Marie receiving the Most Valuable Player

award. Wanda Wilson was also selected to the all-state team in the state tournament.

After arriving in Los Angeles, the women won their first match but lost in two very close contests and were eliminated. The two teams which defeated High Point College finished third and fourth in the nation. Only three seniors will graduate from the team and hopes are running high for another winning season next year.

# HIGHPOINTS

Volume 53, No. 1, February 1977

## Committee appointed to discuss library services, plans



FIRST STAGE in planning a new library is to decide what is needed. Members of the *ad hoc* committee meeting with Dr. Bird include (from the left) Mrs. Carol A. Brantley, assistant librarian and instructor; Dr. James W. Stitt, assistant

professor of history and chairman of the committee; Miss Lynn McCulloh, sophomore; Miss Marcella Carter, head librarian and assistant professor; and Dr. John F. Moehlmann, assistant professor of English.

THE COLLEGE has appointed a planning committee and chosen a consultant to advise the board of trustees on the program and services which the library should furnish. An *ad hoc* committee is to limit itself to the function and purposes of the library, and is to avoid "bricks and mortar" consideration.

Dr. Warren P. Bird, director of the Duke University Medical Center Library, has been selected by the trustees to give general counsel and assistance in the project to provide a better building for the library.

In his opening remarks to the larger planning committee at its first meeting in December, Dr. Bird advised the group to think of the library being made up of resources for teaching and learning, librarians who are the mediators for the informational resources, and the users. He especially emphasized that the users, the students, are certainly part of the total entity called a library.

"A library is not a building," he said. "We need a new facility, and our needs may produce a new building but the library is inside the building."

In looking to the role of an architect in planning a new facility, Dr. Bird advised the group that only "those who know what must be done in a building can tell the architect what is needed." The *ad hoc* committee, concerned only with what the College needs by way of library requirements, will pass its decisions on to the larger library planning committee headed by Dr. E. Roy Epperson, assistant dean.

## Support for Annual Fund sought by letters from chairmen

CLASS CHAIRMEN have been selected to lead the Annual Fund to the goal of \$77,000 by May 31, 1977. Every alumnus of the College will receive a personal letter urging support for the Fund through a contribution.

Chief portion of the Annual Fund will go to the Alumni Chair of Higher Learning, the Golden Decade capital expansion program, scholarships, and other purposes designated by individual contributors. Outstanding contributions will be recognized by membership in the Fellows Club

(\$1,000 or more); the Lamplighter's Club (\$500 to \$999); the Tower Club (\$250 - \$499); and the Centurion Club (\$100 to \$249).

Class chairmen who will be contacting members of their classes are:

Herman E. Coble '27, Burlington; Joseph W. Holmes '28, Burlington; Marjorie B. Welborn '29, High Point; The Rev. Talton J. Whitehead '30, Burlington; Hart B. Campbell '31, Saginaw, Michigan; Eleanor C. Young '32, High Point; Unity Nash Funderburk '33, High Point; Dr. Joseph F. Coble '34, Durham; The Rev. Aubert M. Smith '35, High Point; M.G. Isley '36, Cary; Mary Margaret Bates Brown '38,

Roanoke, Virginia; Robert B. Rankin '38, High Point; Dr. J. Allen Thacker '39, High Point; The Rev. Beverly E. Bond '40, Pineville, Louisiana; Albert G. Earle '41, Boonton, New Jersey; Geraldine Rash White '42, Statesville; LeRoy Foster '43, Melbourne, Florida; Willis F. Gupton '44, High Point; Ava-Neil Taylor Collins '45, Gastonia;

Raymond A. Warlick '46, Ferrum, Virginia; Joel Williams '47, High Point; Thomas H. Elder Jr. '48, High Point; James F. Brewer '49, Thomasville; The Rev. George W. Thompson '50, Charlotte; Murray M. White '51, High Point; Dr. Garland E. Wampler '52, Burnsville; Dr. John R. Sills '53, Charlotte; Thomas M. Charping '54, Charlotte; Roy R. Bevan '55, Lexington; Lorraine McCurry Griffin '56, High Point; Mary M. Stuart '57, High Point; The Rev. Paul E. Moss Jr. '58, Richmond, Virginia; Floyd T. Craven '59, High Point; Betty Gray Dorman Brown '60, Ridgefield, Connecticut; Vicki Smith Dallas '61, High Point; Major Larry D. Wilson '62, Summerville, South Carolina; Donna Lawrence Staley '63, Winston-Salem; The Rev. Frank M. Jarvis '64, Lawndale; Mrs. C.J. Neal Lipski '65, Danville, Kentucky;

The Rev. Ned B. Owens '66, Lexington; Angela Smith Davenport '67, Winston-Salem; Jonathan L. Faulkner '68, Washington, D.C.; Mr. and Mrs. Raymond A. Baity '69, Lexington; Richard H. Boyd '70, Soquel, California; Beth Holcomb Sigmon '71, Pembroke; John A. Young '72, Laurinburg; David T. Wilson '73, High Point; Elaine F. Conklin '74, Whippany, New Jersey; Stephen L. Lawson '75, Smyrna, Georgia; and Robert E. May '76, Winston-Salem.

The Fund was supported last year by over 1,500 alumni with contributions totaling \$111,145. Additional income from corporations, foundations, church and government raised the gifts and grants received to over \$855,459.

## Von Cannon selected to top Admissions post

ARVIL E. VON CANNON JR. has been promoted to director of admissions following the resignation of Robert A. Wells Jr. in December from that office.

Von Cannon joined the College in 1972 as admissions counselor and was appointed assistant director a short while later. His previous educational experience includes five years as assistant principal and teacher at Jamestown Elementary School. He will head an active and successful program of securing students from across North Carolina and the eastern half of the country. The College has 1,088 students from 24 states and eight foreign countries.

While employed with Guilford county schools, he was president of the Guilford County unit of the Association of Classroom Teachers and the N.C. Association of Education. He graduated from Appalachian SU and earned his master's degree from UNC-Greensboro. He is a native of Albemarle and attended Wingate College before going to Appalachian.

His assistants include Elizabeth Wilhoit and Larry McCauley. Elizabeth graduated from High Point College in '73. She attended Drew University as a graduate student and taught remedial arithmetic and language before coming back to her Alma Mater last year. Larry graduated from Elon College and was admissions counselor there for two years before joining High Point College last year.



Von Cannon



Wilhoit



McCauley

## Parents Day March 5

PARENTS DAY is scheduled for March 5 with a program to acquaint parents with the overall life of the College. During the morning President Wendell Patton will discuss the state of the college and parents will meet with faculty members. In the afternoon the four academic divisional chairmen will review the division concept and related programs.

Dr. and Mrs. Patton will host a reception in the Holt McPherson Campus Center from four until five p.m. Parents who can stay overnight are invited to join in the Sunday morning worship in the Chas. E. Hayworth Sr., Memorial Chapel.

## R.J. Reynolds boosts physical science study with gifts of equipment

A NEW ERA BEGAN IN THE physical sciences during the Christmas holiday when the College received a truckload of equipment and apparatus from the R.J. Reynolds Tobacco Company.

A Varian A-60A Nuclear Magnetic Resonance Spectrometer (NMR), a Beckman Model DK Direct Transmittance Recording Spectrometer, a portable refrigerated centrifuge, a portable freeze-dry apparatus and several other items will make the chemistry program equal in equipment to what a student would normally expect to find only in a much larger university.

Dr. E. Roy Epperson, chairman of the Department of Physical Science, said the NMR would be "ideal" for quality education. Students will now have "hands-on" experience to support classroom theory, he said. Major chemical industries equip their labs with an NMR, Epperson said, and having the equipment at the College means our students will be fully acquainted with the apparatus when they go into a commercial lab or graduate school lab.

Before the gifts arrived, Dr. Epperson said, the students at High Point College could only be told that such equipment existed. They were taught how an NMR works and how it was to be operated. Now, they will be able to use the NMR in both teaching and research projects. One of the first projects will be undertaken by Dave Friday, senior chemistry major from High Point, with Dr. Gray Bowman as advisor.

The NMR is used to determine the structure of organic compounds. A small amount of the compound under study is placed in the magnetic field; the resonating nuclei produce a spectrum which the operator interprets to determine the structure of the compound. The recorded spectrum shows the kind of hydrogen atoms present in the compound as well as their environment.

Before the NMR was devised, similar analysis of a compound could not be performed manually. The analysis could be computed and deduced but not demonstrated. The device came into widespread use a little more than a decade ago but has now filled such a need in modern laboratories that a chemist "wouldn't know what to do without it,"



DAVE FRIDAY studies the manual for the NMR before beginning research project.

according to Epperson.

The Beckman Model DK Direct Transmittance Recording Spectrometer also relates to structure analysis of chemical compounds; it measures absorption in the visible ultra-violet region.

The College is extremely grateful to the R.J. Reynolds Tobacco Company for the gifts. The additions have made the chemistry program far

more advanced in its capabilities than undergraduates would ordinarily expect to find on the campus of a liberal arts college the size of High Point College.

## Student aid complicated by government rules

MORE THAN HALF the students at the College, or 643 of last year's 1,130 enrollment, received a total of \$794,424 in financial aid. 307 of them received \$282,207 in gifts and grants from the U.S. Office of Education.

Being sure the right student gets the right amount and repays it when the money is due, is the job of Mrs. Susan Nisbet, financial aid officer at the liberal arts college. She spends considerable time reporting to the Office of Education just how she manages the available money. She recently calculated that her report to the Federal government last year required 200 hours, the equivalent of 5 forty-hour weeks or 10% of her year's work.

Mrs. Nisbet has nearly 2 dozen sources of money or concessions including athletic and academic scholarships, concessions to children of faculty and staff, as well as ministerial concessions and the North Carolina state tuition grants. Five of these sources are supported by taxpayer's dollars and the reporting involved is uppermost in her daily concerns. These five sources of aid are the National Direct Student Loans, Guaranteed Loans, Supplementary Educational Opportunity Grants, Basic Educational Opportunity Grants, and the College Work-Study Program.

The Department of Education makes a certain amount of money available to the College and puts the money on deposit in an area bank. Mrs. Nisbet then disburses the money according to carefully prescribed formulas and reports her procedures regularly to the Atlanta regional office of the Department.

In most cases, money assigned to students is never placed in their hands; when a check must be actually written to satisfy a transactional need, the student is handed the check long enough to endorse it and give it back to the college.

Her work is reported annually to the Office of Education in a 25-page report, following an institutional application to participate in educational funds. The reporting is done in categories of race and sex, categories that were forbidden a short while ago.

For each student who receives a loan or grant, her office must have on file a government-approved need analysis. The Parents' Confidential Survey is familiar to many families who have requested aid for a son or daughter in college. The need analysis form is fed into a computer where decisions on dollar-amounts are made purely on the basis of mathematical calculations. Subjective factors are not part of the decision on how much money a student should receive from the Federal government.

The average award to a student is \$1,500 to \$1,800 usually in a "package" consisting of a loan, a grant, and a work-study. In some cases, the whole package may run as high as \$3,000 but many receive only a few hundred dollars each year.

Of the students who apply for aid, 83% are "qualified," but with a further screening the aid is actually offered to only 82% of those qualified. In a final count, 92% of the students who are awarded financial aid accept and subsequently attend the College.

*TUITION receipts from students pay about 82% of the actual costs of attending college; the remaining 18% comes from alumni gifts and the generosity of numerous other supporters.*



## Couple gives student aid fund

FOIL V. and RUTH CHARLES have recently established a scholarship fund at the College to assist students majoring in Religion or Christian Education. Mr. Charles graduated from the College in the Class of 1950 and has continued to be an active and loyal alumnus. He and Mrs. Charles live in Greensboro. He is vice president of William W. Kendrick Co., Advertising Specialty Counselors.

The terms of the scholarship, to be called the Foil V. and Ruth Charles Scholarship Fund, provide that grants will be made annually with income from the fund.

In accepting the gift on behalf of the College, President Wendell Patton said the generosity "reflected a sincere desire to provide quality education for young men and women in a church-related college."

## Alumni helpful in admissions

ALUMNI CAN ASSIST in identifying future High Point College students and can encourage them to become fully acquainted with the College as they select a college to attend.

When an alumnus sends a contribution to the Annual Fund, the alumni office includes a Prospective Student Card with a "Thank You" note. The Card gives opportunity for the alumnus to identify a high school student who might become interested in the College. Upon receipt of the information, the Admissions Office sends a catalog and other pertinent material to the prospective students.

Several alumni chapters make it a practice to invite prospective students and their parents to chapter meetings. Some chapters have also scheduled receptions for prospective students and their parents.

Alumni director Robert E. Williams and Admissions director Arvil Von Cannon have both stated their pleasure at alumni cooperation with the admissions program.

"I feel that our alumni are our best advertisement. A personal contact between an alumnus and a prospective student is almost certain to benefit everybody concerned," Von Cannon said.

## Sports give excellent showing in fall games

WITH FOUR FALL SPORTS concluded, the Panthers can claim two conference championships, one District 26 title, one AIAW state and regional banner, a trip to the national tournament for the volleyball team (See story on page one.) and a record set in field hockey for the most games ever won.

In cross country, the Purple Panthers won the district meet to regain the title previously held for seven years. In an exceptional year, they posted a meet record of 11-3. Outstanding team members were Mark Hamlett, Baltimore, Maryland; Steve Dunham, Dover, Delaware; Perry Macheras, Winston-Salem; and Randy Larzelere, Long Valley, New Jersey.

For her first year as coach of the women's field hockey team, Kitty Steele posted a 10-4-1 record, best in the College's history. Important wins came over Pfeiffer, Duke, and the University of North Carolina. They finished with top seeding from North Carolina in the AIAW Regional Tournament but succumbed to injuries and lost two straight.

Panthers won their second conference title in soccer in three years as they defeated each team in the Carolinas Conference. The 5-0 record was good for first place and a spot in the district play-offs. Jeff Potter, Towson, Maryland; Doug Challenger, High Point; Greg Goehle, Smithtown, New York; and Gary Downing, Smithtown, New York, were selected all-conference. Walter Roe, Baltimore, Maryland, Goehle, Potter, and

Challenger were selected all-district. Goehle was the Player of the Year in the conference, was selected to the All-South team, and Coach Ken Chartier was the Coach of the Year.

Winter months bring on basketball and the Lady Panthers won the Carolina Christmas Classic in Chapel Hill as they defeated Western Carolina, Appalachian State, and UNC-Chapel Hill for the championship. They finished last season with a 24-1 record and have all the starters back. Marie Riley, Selden, New York, freshman, was invited to the Pan American and Olympic basketball tryouts while still in high school. Other outstanding players include Connie Dickens, Roxboro; Vickie McLean, High Point; Wanda Wilson, Thomasville, an All-American candidate, and Robyn Cooper, Greensboro; Dawn Allred, Greensboro; and Ethel White, Greensboro, All-Conference selections. Gracie Simmons, High Point, and Wanda Wilson were chosen All-State last year.

In men's action, the Panthers began by winning their first four games, and followed with five losses including two to the Number 2 & 3 teams in the nation. Seniors Pearlee Shaw, High Point, and Ray Coble, Greensboro, led the Panthers in the early games with help from sophomore guard Dennis West, Brooklyn, New York. With seven freshmen on the team, the Panthers are in a "re-building" year. John O'Brien, 6-8 at 245 pounds, Lake Ronkonkama, New York, has been an early standout with guard Danny Anderson, Gastonia.

## NEW ADDRESS???

Please send **HIGHPOINTS** your new address and save the College 25 cents. If you don't, the Post Office automatically notifies us after you move AND charges us for the information. Fill in your new address below, attach label from an old **HIGHPOINTS**, and mail to the Alumni Office at the College, ZIP 27262. Thank you.

new address

city state zip

(Be sure to attach old address label.)



Rudisill '50

agency which arranges tours for the District of Columbia area.

**ROBERT C. VOLZ**, Richmond, Virginia, is a research chemist at Haskell Chemical Company and is pursuing the MBA degree at the University of Richmond.

**VIRGINIA DIX WILSON**, Portsmouth, Virginia, is a social worker in the Chesapeake Social Service Bureau.

**PAUL J. WOODWARD**, Rockville, Maryland, received his Master of Arts degree from Hood College last May. He was a member of the Psi Chi Club in graduate school. Paul is a live-house manager for Volunteers of America Community Treatment Center, a correctional half-way house for federal offenders in Washington, D.C.

**GAZELIA PAYNE CARTER**, Elizabeth City, is teaching English in the public school system.

**LESLIE A. DRUMMOND**, Chicago, Illinois, is employed as a guidance counselor and doing testing for a private girls high school.

**ALAN POPADINES**, Whippany, New Jersey, received his master's degree in clinical psychology in June from Fairleigh Dickinson University.

**STEPHEN L. LAWSON**, Next Class Reunion — 1980  
**PATRICIA M. DREW** is teaching elementary school in Suffolk County, Long Island, New York.

**GEORGE FERGUSON**, Charlotte, is a worker-counselor at Boys Homes of North Carolina.

**CATHERINE M. HUTCHINS**, Lexington, is teaching with the Davidson County school system.

**MARGARET SATTERFIELD OSBORNE**, North Fort Myers, Florida, teacher at Suncoast Elementary School. Her husband, **ROGER '76** is an agent with Smith-Lesher Insurance, Inc. in Naples, Florida.

**MARCUS S. PORTIS**, Lexington, is a student at the Divinity School, Duke University.

**RICHARD RAY WATSON**, High Point, is assistant manager at K-Mart.

**ROBERT E. MAY**, Next Class Reunion — 1981  
**PAT JOBE**, High Point, promotions director for the outdoor drama "Sword of Peace," is planning a 400-mile hike through the Piedmont this spring to spread the word about the drama and its expanded program. Pat plays the role of William Morris in the story of Quakers caught in the tensions of the Revolutionary War.

**LAURENCE A. POTTER**, Bridgewater, New Jersey, is a research technician with Biosearch Medical Products, Inc.

**BENJAMIN C. PROBERT**, Greenville, South Carolina, is Director of Exploring for the Boy Scouts of America.

**CHRISTOPHER J. SCHLAEPPI**, Greenville, is working on his Master of Arts degree at East Carolina University and has been given an assistantship, teaching freshman psychology.

## News from Alumni

**'28**  
Class Chairman: **Joseph W. Holmes**  
Next Class Reunion — February 11, 1978

**EFFIE KECK NELSON**, Mebane, has retired after teaching for 35 years in Alamance County schools. At her retirement she was a special reading teacher. Effie has been tutoring reading, spelling, and arithmetic at her home.

**LAURA THOMPSON RUSSELL**, Oaktown, Indiana, has retired from teaching home economics and other subjects as well as serving as a home demonstration agent.

**'31**  
Class Chairman: **Hart B. Campbell**  
Next Class Reunion — 1981  
**ALICE LUCILLE BROWNE**, Jamestown, retired in June, 1975, from the Greensboro public schools as assistant superintendent of Pupil Personnel Services. She is teaching part-time at the University of North Carolina in Greensboro.

**'32**  
Next Class Reunion — 1982  
**FRANCES PRITCHETT**, Hillsborough, has retired from 30 years of church work, the last one serving seven congregations in Orange County under the Orange Presbytery of the Presbyterian Church, U.S. Since retirement Frances has been working part time in the Presbytery's office in Durham. She was recently ordained and installed as Deacon in the Hillsborough Presbyterian Church.

**'35**  
Class Chairman: **Aubert M. Smith**  
Next Class Reunion — 1980  
**PAUL VONCANNON**, Greensboro, retired from Duke Power Company in May, 1976, after 41 years of service.

**'41**  
Class Chairman: **Albert G. Earle**  
Next Class Reunion — 1981  
**COL. GEORGE H. NEEDHAM**, Charlotte, 108th Division (Training), Army Reserve Chaplain since 1962, retired at the end of December after 32 years active army and army reserve service. As Division Chaplain, George was responsible for providing spiritual leadership to the 3,000 member Division in 27 cities in North and South Carolina.

**'42**  
Class Chairman: **Geraldine Rash White**  
Next Class Reunion — 1982  
**RALPH O. LANIER**, Dobson, is principal of Surry Central High School.

**'46**  
Class Chairman: **Raymond A. Warlick**  
Next Class Reunion — 1981  
**MAXINE ALDRIDGE MARSHALL**, Springfield, Virginia, teaches at a private school in Virginia and for Fairfax County public schools. Her husband, Ralph, who attended HPC '43-'44 and '46-'47, is employed as a professional staff member for the House Armed Services Committee in Washington, D.C.

**'47**  
Class Chairman: **Joel Williams**  
Next Class Reunion — 1982  
**WINCIE CAGLE BOWMAN**, Germantown, Maryland, is a teacher in the Montgomery County (Maryland) school system. Her husband, **NORMAN L. BOWMAN, JR.** '53 is with Liberty Mutual Insurance Company as claims manager in Rockville, Maryland and Washington, D.C.

**'48**  
Class Chairman: **Thomas H. Elder Jr.**  
Next Class Reunion — February 11, 1978  
The Reverend **C.G. ALSPAUGH JR.**, Statesville, is now in his fourth year as district superintendent of the United Methodist Church.

**'49**  
Class Chairman: **James F. Brewer**  
Next Class Reunion — 1979  
**WILLIAM A. HOLTON**, Winston-Salem, has been appointed district manager for sales and operations for McLean Trucking Company.

The Reverend **ROY C. PUTNAM**, Greensboro, has recently written a book entitled *Getting It All Together*, published in January by Abingdon Press.

**'50**  
Class Chairman: **George W. Thompson**  
Next Class Reunion — 1980  
The Reverend **GEORGE W. RUDISILL**, Charlotte, received the honorary Doctor of Divinity degree from Pfeiffer College during Christmas Commencement on December 16. George is Director of the Council on Ministries of the Western N.C. United Methodist Conference.

**'53**  
Class Chairman: **John R. Sills**  
Next Class Reunion — February 11, 1978  
The Reverend **WILLIAM O. BIGHAM**, Greensboro, is director of Urban Ministry, Inc.

**'55**  
Class Chairman: **Roy R. Bevan**  
Next Class Reunion — 1980  
Dr. **DAVID M. ABERNATHY**, Marietta, Georgia, received an Emmy award for "Christmas With The Busbees," a TV show on the Governor of the State of Georgia and his family.

**'57**  
Class Chairman: **Mary M. Stuart**  
Next Class Reunion — 1982  
**SYLVIA ANNE BOBO JENKINS**, Union, South Carolina, teaches remedial reading at Carlson Elementary School. She was chosen teacher of the year for 1976-77.

**'58**  
Class Chairman: **Paul E. Moss Jr.**  
Next Class Reunion — February 11, 1978  
**SANDERS L. GRANTHAM**, Winston-Salem, has been promoted to vice president by North Carolina National Bank. He became a branch manager and consumer credit manager for the bank in Thomasville in 1970 before being transferred last year.

**'59**  
Class Chairman: **Floyd T. Craven**  
Next Class Reunion — 1979  
**ROBERT E. WILLIAMS**, High Point, has been elected president of the North Carolina Alumni Chapter of New Orleans Baptist Theological Seminary.

**61**  
Class Chairman: **Vicki Smith Dallas**  
Next Class Reunion — 1981  
**JUDITH GARNER**, High Point, has been named production coordinator of WGHP-TV. Judith joined the station in February of last year after being employed by a local advertising agency and the Alderman Company.

**'64**  
Class Chairman: **Frank M. Jarvis**  
Next Class Reunion — 1979  
**THOMAS ROGER PIKE**, Silver Spring, Maryland, was recently promoted to Lieutenant Commander in the U.S. Coast Guard. Roger is assigned to the service's Headquarters in Washington, D.C.

**'66**  
Class Chairman: **Ned B. Owens**  
Next Class Reunion — 1981  
**HILDA STANFORD ALFORD**, Greenville, was formerly employed by the North Carolina State Commission for the blind. She is now at home with two boys, ages 2 and 8 months.

**'67**  
Class Chairman: **Angela Smith Davenport**  
Next Class Reunion — 1982  
**JAMES STITT**, assistant professor of history at High Point College, has earned his Doctor of Philosophy degree from the University of South Carolina. Jim returned to High Point College as an instructor in 1969.

**ROBERT A. WELLS JR.** has resigned as Director of Admissions at High Point College. Rob has entered a private enterprise in Florida.

**'68**  
Class Chairman: **Jonathan L. Faulkner**  
Next Class Reunion — February 11, 1978  
Captain **MICHAEL D. HOKE**, United States Marine Corp, is stationed on Okinawa. The Alumni Office regrets the misinformation received and printed in the December issue of **HIGHPOINTS**.

**DIANE ABBOTT STEELE**, Indianapolis, Indiana, has been selected for inclusion in the 1976 Outstanding Young Women of American Awards volume in recognition of outstanding ability, accomplishments, and service to her community.

**'69**  
**JAMES C. COTSON**, Salem, West Virginia, has joined the faculty of the Human Services department at Salem College after completing his service as executive director of the Boys' Club of Ypsilanti, Michigan. While with the Boys' Club he earned his master's degree and conducted a successful capital campaign for a new Club facility.

**'70**  
Class Chairman: **Richard H. Boyd**  
Next Class Reunion — 1980

**ROBERT BAGWELL**, Greenville, South Carolina, is administrator of the County Family Court. His first post there was interrupted by military service but he resumed his role afterward.

**DAVID B. BISHOP**, High Point, has been recognized as a three-year qualifier of The 1976 National Quality Award by Pilot Life Insurance Company.

**'71**  
Class Chairman: **Beth Holcomb Sigmon**  
Next Class Reunion — 1981  
**JOHN R. (BOB) MCDONALD JR.**, Alexandria, Virginia, after working 14 months as an accountant with the office of Naval Research in Arlington, has become auditor for the Defense Contract Audit Agency, Alexandria.

**'72**  
Class Chairman: **John A. Young**  
Next Class Reunion — 1982  
**LINDA BAGBY**, Annandale, Virginia, is a program analyst with the commission on federal paperwork, a congressional study attempting to reduce bureaucratic red-tape.

**THOMAS I. BARROWS**, Hickory, is assistant district attorney after receiving his Doctor of Jurisprudence degree from Wake Forest University Law School. His wife, **LINDA HARTMAN BARROWS '74** is a seventh grade teacher in the Caldwell County school system.

**ROBERT W. GILLILAND**, Arlington, Virginia, is a budget analyst with the office of the Secretary, U.S. Department of Agriculture.

**LEONARD S. SAMET**, High Point, is regional sales manager of Weavers-Morgon Corporation representing Malden Mills Upholstery Fabrics.

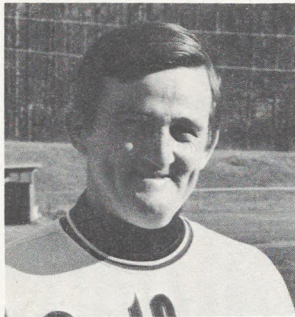
**'73**  
Class Chairman: **David T. Wilson**  
Next Class Reunion — February 11, 1978  
**ROBERT M. (BUDDY) MCELVANY**, Alexandria, Virginia, is working for the Arlington, Virginia YMCA office as an Outreach Coordinator for recreational activities for junior and senior high school students.

**JANE E. MCELVANY** is in her fourth year of teaching in Arlington, Virginia. Jane is a remedial reading specialist. She is pursuing the Master's degree in Remedial Reading.

**BRUCE MACLEOD** is beginning a Master's degree program in biology at Old Dominion University, Norfolk, Virginia.

**ALPHONSUS OBAYUWANA**, Washington, D.C., presented an informative and interesting seminar at High Point College in October based on his experimental findings of thornia as a possible cure for asthma. Alphonsus has completed a year of graduate study in molecular biology at the Medical College of Georgia. He is a candidate for the Master of Science degree in biochemistry at Howard University, where he is president of the graduate student council.

**BETTY SUE SCOTT**, Arlington, Virginia, is employed by Tour Mobile, an



**COACH CHUCK HARTMAN** has been selected Baseball Coach of the Year for Area III, NAIA. He received the award in Miami at the annual convention of the National Association of College Baseball Coaches. He has won over 30 games a year for the past 7

seasons. In 1975 the Panthers were 42-6 and rated 9th in the national polls. Since he came to High Point College in 1960, the team has won 8 conference championships, 4 District 26 titles, 2 Area VII banners and competed in the NAIA national tournament twice. His 1975 team was ranked second in the nation for most of the season. He was picked Coach of the Year in the N.C. in 1972 by the professional baseball organizations.

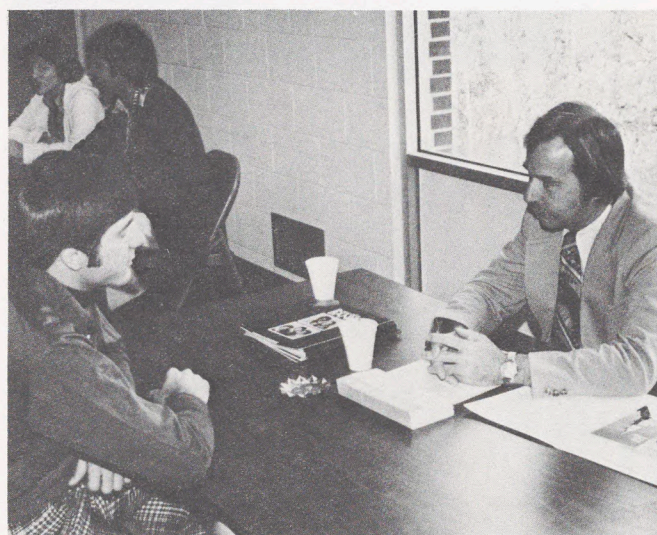


**300 COMMUNITY LEADERS** attended the Sixth Annual Prayer Breakfast at the College on December 17. Speaker was the Rev. George Robinson, district

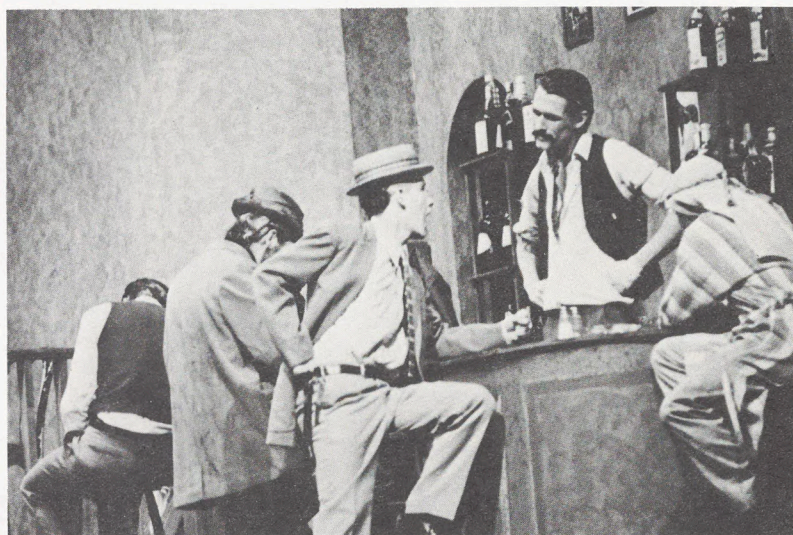
superintendent, United Methodist Church. The annual meeting is one expression of the College's appreciation for close ties with the community.



**DR. BENJAMIN E. MAYS**, retired president of Morehouse College, Atlanta, and universally known as a civil rights leader, spoke to a "standing room only" audience in Haworth Hall in October. He explained why, after a lifetime of struggle, he is pleased with the progress of the South in human rights. At the same time, he urged blacks to become fully qualified for any career or position they wish to compete for.



**BUSINESSES** and **AGENCIES** sent representatives to the Campus Center on Nov. 17 for talks with students who were interested in specific careers. (Above) Dave Wagoner '55, of Wachovia Bank and Trust, Winston-Salem, discussed the banking industry with numerous students.



**THE TIME OF YOUR LIFE**, by William Saroyan, was presented by the Tower Players in November as part of a week-long humanities festival. Rich Moore '73, played a bartender (above) who observed a parade of characters through the neighborhood bar.

# HIGHPOINTS

Second Class Postage Paid  
High Point, N.C.  
27262

Published six times annually by High Point College, 933 Montlieu Avenue, High Point NC 27262. Subscription \$1.00 per year payable by the College. Send change of address to above mailing address. Raymond A. Petrea, Editor; Robert E. Williams, Director of Alumni Affairs.

**Member**  
Council for Advancement & Support  
of Education

*Address Correction Requested*



*GOLDEN PANTHERS (Seated, from the left) are Callie Isley Smith, Gibsonville; Pomona Johnson Amick, Burlington; Jewell Hughes Stokes, High Point; Ethel Blackwelder Broome, Chapel Hill; Margie Perry Ellington, High Point;*

*(Standing) O.C. Loy, Lexington; Herman E. Coble, High Point; May Frazier Feree, High Point; and W.M. Loy, High Point.*

## 1927 Class designated first Golden Panthers

**HIGH POINT COLLEGE'S** first graduating class met for their Fiftieth Class Reunion as guests of President and Mrs. Patton on Homecoming Day, February 5. Nine members of the original 13 were present.

The 1927 **ZENITH** shows that in the year they graduated, H.E. Coble was selected the "most original," May Frazier as the "most dignified girl," and Margaret Perry, the "jolliest."

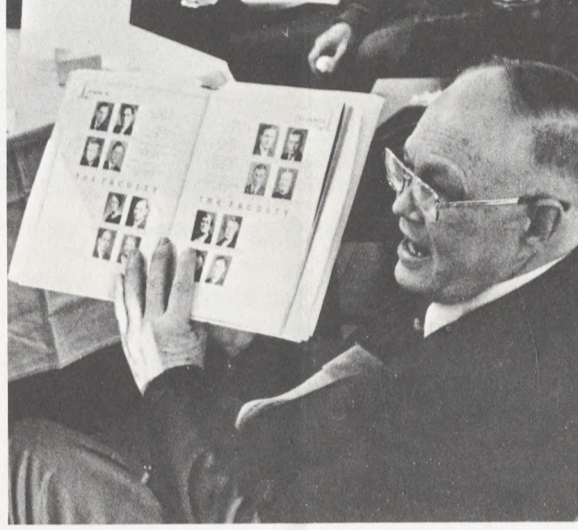
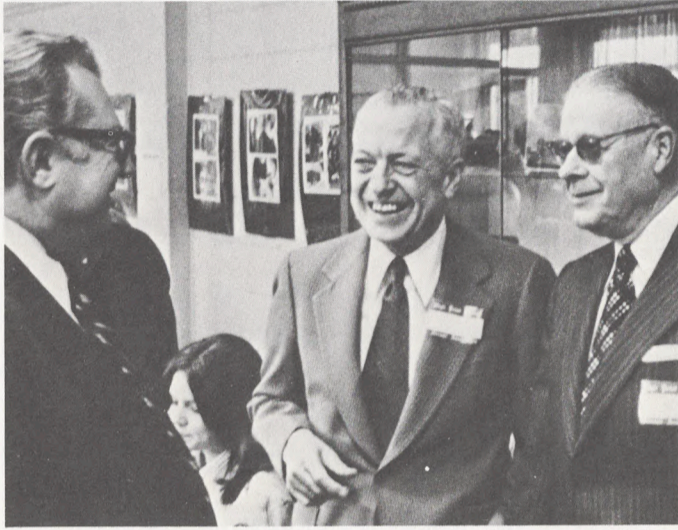
May Frazier was the editor of the **ZENITH**; Pomona Johnson was president of student government, and Margaret was president of the Nikanthan Society.

Members of the Class were designated "Golden Panthers" in recognition of their fifty-year status, and were given a pass to all campus-sponsored events.

# HIGHPOINTS

Volume 53, No. 2, April 1977

## Alumni return to College for full day of reunion activity



OVER 400 Alumni came back to Alma Mater on February 5 for the annual reunion. First programmed item of the 1977 Homecoming was a memorial service for alumni who died during the past year.

The returning classes met for luncheons in local restaurants, with the 50-year and 25-year classes getting the red-carpet treatment. The Class of 1927, the College's first, were guests of President and Mrs. Patton in the Campus Center. The Class of 1952 were guests of George S. Erath at Emerywood Country Club.

Highlight of the afternoon was a symposium on changes in religious thought since the founding of the College, with Miss Clarise Bowman, former professor of religion and philosophy, and Dr. William Locke, retired chairman of the department.

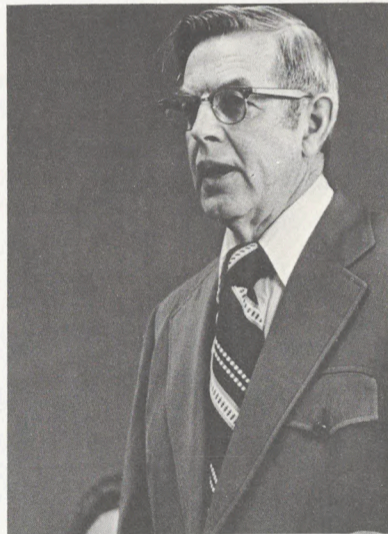
Numerous open houses and social hours followed, with an overflow crowd for the banquet downtown. The Homecoming Queen was presented at halftime of the basketball game. Other open house activities after the game lasted until early morning.

(See photographs of Homecoming throughout this issue of **HIGHPOINTS**.)

## Homecoming Feb. 5



Homecoming Queen - Jennifer Stone



## 900 Alumni send gifts

THE GOAL OF \$77,000 for the Annual Alumni Fund will be reached by May 31 if contributions continue at the present rate. With the deadline still more than two months away, contributions exceed 85% of the goal.

The Fund supports the Alumni Chair of Higher Learning, the Golden Decade capital expansion program, scholarships, and special areas designated by individual donors.

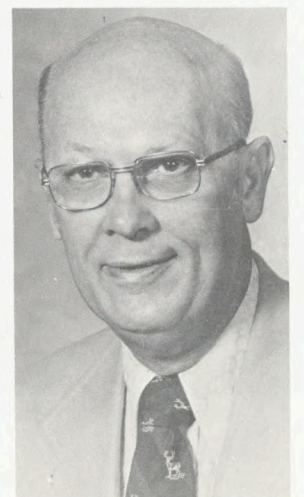
Gifts have been received from 900 alumni. Classes with largest totals of gifts are the classes of 1965 (\$10,350); 1929 (\$5,200); and 1970 (\$4,400). Other classes with totals over \$1000 are 1928, 1932, 1940, 1941, 1949, 1950, 1952, 1953, 1958, and 1964. All donors will be listed in the Annual Report to be published in the fall.

Class chairmen have sent individual letters to all members of their classes seeking funds.

## Honor to Short at banquet

RICHARD A. SHORT '40, executive director of the Presbyterian Home, Inc., has been chosen Alumnus of the Year and will receive the award at the Alumni-Senior Banquet on May 5 at the Top of the Mart.

Short's selection recognizes his professional service in the care of older people. He is immediate past president of the American Association of Homes for the Aging and he received the Award of Honor from the AAHA at its annual convention last year. Recognized as a highly professional representative of all non-profit homes, he is a member of the Long-Term Care Facilities Council of the Joint Commission on Accreditation of Hospitals. He is an active Presbyterian.



## New majors begin in communications, music

The College has instituted new majors in communications, music, and general music education. Dr. Wendell Patton, president, made the announcement following a recent faculty meeting.

Dr. Patton said the new programs were initiated to meet the changing needs of students as they look forward to after-college employment and to expand the curriculum toward the total educational possibilities for all students.

The communications major is an interdisciplinary combination of courses in written English, performing communications, and supporting courses from business, sociology, and history.

The program is designed for students who expect to enter careers in journalism, theatre, TV, radio, or advertising and related fields. The basic purpose of the major is to offer a broad-based background rather than specialized skills.

During the last semester of the junior year or

the first semester of the senior year, students will participate in the Student Career Intern Program, a work internship in an area business. The on-the-job experience is expected to give a student a comprehensive view of a prospective career.

Students in the communications major will also be involved with the campus radio station, student newspaper, and theatrical productions.

The two music majors are largely a re-instatement of programs that were dropped several years ago. Both the music major and the music education majors will prepare a student for immediate careers or for continued study in graduate school.

The basic music major centers on the performing ability of the student in applied music while the music education major looks toward a career in teaching.

Dr. James Elson, chairman of the fine arts department, will be the advisor for students entering the music programs.

## William T. Powell Memorial Trust established by his widow

MRS. ANNIE MAE POWELL is one of High Point College's most knowledgeable supporters, as well as one of the most generous.

Mrs. Powell's latest concern is reflected in a trust she has established for the College as a memorial to her late husband, William Thomas Powell, who was responsible for the success of Myrtle Desk Company until his death.

As a native of High Point, she takes great pride in having seen the development and growth of the College from the very first until now. She had already graduated from Converse College by the time the ground was cleared for High Point College's first building. Mrs. Powell was born in Toccoa, Georgia.

She maintains a scholarship fund at the College, and insists on coming to the campus each year to have lunch with the recipients of the scholarship. The scholarship will complete 25 years next fall. When the College was new, she helped raise funds to purchase the portrait of Susanna Wesley hanging in a dormitory.

While she never had employment, many people felt she was an integral part of her husband's work at Myrtle Desk. After Mr. Powell's death she stayed in contact with the business by opening and reading each weekend's mail. She kept the mail at home until someone came on Monday morning from the company. "I liked to see those checks come in," she said.

Her husband, Tom Powell, came to High Point in 1907 from Penhook, Virginia, to work on the Southern Railway. He was lured to Welch Furniture Company but when the owner died a few years later his job evaporated. Myrtle Desk Company was for sale at the time, and Powell bought it for \$100,000 on borrowed money. The Company survived the Depression and became one of the world's largest producers of office furniture.

Mrs. Powell says she has "always loved the College," and has known the last three presidents on a first-name basis. She believes the College's outstanding contribution to the community is the "wonderful graduates who have become outstanding businessmen. Hundreds of men and



MRS. POWELL was interviewed in her home on the grounds of The Presbyterian Home. A portrait of her late husband hangs behind her.

women would never have had a college education if it hadn't been for High Point College," she said in a recent interview in her home on the grounds of Presbyterian Home.

With obvious personal satisfaction, Mrs. Powell noted that her granddaughter, Lucy Latimer Samuels, graduated with honors from the College in 1965.

No one should assume that Mrs. Powell is about to "retire" from public life. She served last year on the national board of the Mayflower Society and is Deputy Governor-General of the Society in North Carolina. She attends meetings in Plymouth, Massachusetts, and has been to conventions of the Society in San Antonio, Denver, Philadelphia, and is going to Berkley, California, later this year.

Her involvement in community affairs stretches over many interests. She was chairman

of the Red Cross chapter before the second World War, and served additional terms on the board. She headed the North Carolina Symphony chapter in High Point and was once head of the Alumnae Society of Converse College where she also maintains a scholarship fund given in memory of her sister.

She helped organize the Junior Service League and the Hospital Guild and was president of the Women's Society at Wesley Memorial Methodist Church where she has been a member for 56 years.

The College is deeply appreciative of Mrs. Powell's support and continuing interest. Such contributions as her's continue to provide the means to upgrade the quality of instruction and to guarantee the future of the institution.

## Placement to Dean Hanson

DIANE HANSON, associate dean of students, has been appointed Director of Career Planning and Placement in addition to her current assignment. She will act as liaison between graduating seniors and alumni, and prospective employers.

She will assist students in making career decisions by administering vocational interest tests, and will give students preparation for employment by assisting them in writing resumes and understanding interview techniques.

Miss Hanson will also supervise the visits of employers to the campus and will arrange for students to meet representatives of business and industry.

Miss Hanson came to the College two years ago after being Dean of Students at Brenau College where she was responsible for vocational and career counseling. She received her undergraduate and master's degrees from the University of Alabama and has done additional graduate work at the University of Georgia.



## Women Panthers compete in Nat'l Tourney

THE NATIONAL AIAW TOURNAMENT in Los Angeles and High Point College was there! The women's basketball team won a place in the tournament after a 27-0 season and the regional championship. They finished the tournament in fifth place.

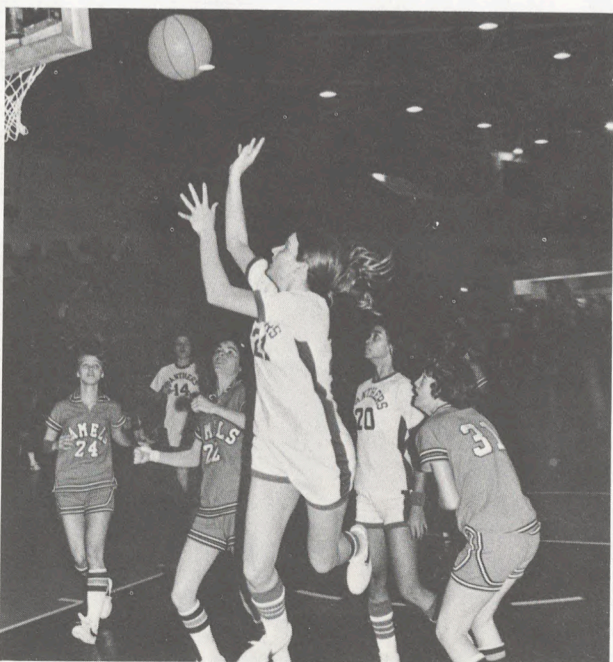
Under Coach Jennifer Alley, the season began with only three days practice; many of the players and Miss Alley had just returned from the national volleyball tournament in Los Angeles.

The women won the UNC Invitational Tournament by defeating UNC 74-72 in the only regular season close-call for High Point. They scored over a hundred points on four occasions and were seriously challenged only a few times. With a record of 19-0, they took the Carolinas Conference title by downing Pembroke (102-33) and Elon (82-62). The state tournament included the season-high score of 121-58 over Wake Forest, plus wins over Mars Hill (91-76) and Western Carolina (81-62).

The Panthers swept through the Southern Region II Tournament. In the semi-finals the

Panthers needed last minute heroics from several players to overcome College of Charleston 80-78. The Panthers lost their only game last year in the regionals to Francis Marion and were determined not to let it happen again. The rematch this year saw High Point win 72-66.

All thirteen players contributed to the perfect season. Two seniors, guard Dawn Allred and forward Wanda Wilson, led the way. Each was named All-Conference, All-Division, and All-State. Gracie Simmons and Ethel White were All-Conference and All-Division. Robyn Cooper, the best defensive player, rounded out the first five. In strong support and often key roles were Germaine McAuley, Marie Riley, and Denise Washington. Jody Westmoreland had a two-hand set shot that was unstoppable; Connie Dickens and Vickie McLean added quickness to the defense. Sylvia Chambers had a big role in winning the regional tournament; Roxxane Crouse, the most spirited, performed well. All but Wilson and Allred return next year.



WANDA WILSON, forward, was named for the fourth consecutive year to the All-State Womens Basketball team by the Greensboro Daily News, and to the All-Conference team.



ETHEL WHITE, guard, was named to the All-Division and All-Conference teams.

## Junior scholars are marshals

TWENTY STUDENTS have been named Junior Marshals with Gary Alan Deal, High Point, and Subil Kay Richardson, Madison, co-chiefs. Junior Marshals are selected for high academic achievement during their first two and a half years of college. The marshals will escort the Senior Class at graduation in May.

Other marshals include Margaret Ellen Adcock, Stokesdale; Judy Lynn Ashe, Cockeysville, Md.; Kathy Elizabeth Avery, Marshalls Creek, Pa.; Barbara Jean Bolton, Wilmington, Delaware; Cynthia Bollinger Carroll, High Point; Jill Walker Dorsett, High Point; Myra Von Faulkenberry, Franklinville; David Robert Hiatt, Summerfield; Janet Susan Hinkle, High Point; Angelyn Marlette, Graham; Vivian Lynn Massie, Stuart, Va.; Louis Bruce McCraw, Kernersville; Patricia Suzanne Niven, Lexington; Pamela Ann Pavco, Cherry Hill, N.J.; Lucretia Jane Penry, Greensboro; Gerald Andrew Plotz, Winston-Salem; Patricia Ann Rusenko, Rockville, Md.; and Andrew Michael Wubbenhorst, Kinnelon, N.J.



# Alumni News '50

**'29**  
Class Chairman: **Marjorie B. Welborn**  
Next Class Reunion — 1979  
**J. MARSHALL SWANSON**, South Boston, Virginia, teaches extension courses for the University of Virginia.

**'30**  
Class Chairman: **Talton J. Whitehead**  
Next Class Reunion — 1980  
**KATHLEEN TEAGUE HEDRICK**, Winston-Salem, retired from teaching elementary school six years ago but still teaches piano and organ in her home.

**'32**  
Class Chairman: **Eleanor C. Young**  
Next Class Reunion — 1982  
**GLADYS GUTHRIE PUGH**, Franklinville, has retired after 39 years as Librarian and teacher at Grays Chapel School, Randolph County. Her daughter, **LOUISE PUGH CORDER '58**, has taken her mother's position as librarian at the school.

**'37**  
Class Chairman: **Mary-Margaret Bates Brown**  
Next Class Reunion — 1982  
**IRIS WELCH NORMAN**, Norwich, Connecticut, is supervisor of music in the city's public schools. She is a member of numerous music societies and has served on state advisory boards in her profession.

**'42**  
Class Chairman: **Geraldine Rash White**  
Next Class Reunion — 1982  
**MARY NALLEY WATSON**, Greensboro, is affiliated with Jeanette Frocks, Inc., as manager of the Maternity Out-Let Store.

**'44**  
Class Chairman: **Willis F. Gupton**  
Next Class Reunion — 1979  
**FRANCES CLINARD DAVIS**, High Point, is in her 29th year of teaching with the Guilford county schools.

The Rev. **JOSEPH S. JOHNSON**, Randleman, is pastor of New Salem United Methodist Church.

**'49**  
Class Chairman: **James F. Brewer**  
Next Class Reunion — 1979  
**CHARLES L. AUMAN**, Durham, Director of Social Work, John Umstead Hospital, Butner, has received the Outstanding Member of the Year Award from the N.C. Association of Social Workers for Mental Health. Since 1949 he has been a member of the social work staff at the hospital and has been Director of Social Work since 1958.

**MICHAEL B. FLEMING**, Greensboro, has been appointed by Governor Jim Hunt to the N.C. State Board of Transportation for the Piedmont area.

The Rev. **JOHN S. OAKLEY** is serving as Pastor of Mt. Tabor United Methodist Church, Salisbury.

Class Chairman: **George W. Thompson**  
Next Class Reunion — 1980  
The Rev. **JOSEPH L. ERVIN**, Lincolnton, was part of a United Methodist Church team of volunteer builders to aid Methodist congregations in Haiti early this year.  
**CHARLES L. WOOTEN**, Raleigh, has been named manager of the branch office of Group Insurance Plans, Inc., for North Carolina and Virginia. He was previously with Nationwide Mutual Insurance Company for more than 20 years.

**'56**  
Class Chairman: **Lorraine McCurry Griffin**  
Next Class Reunion — 1981  
**FRED G. CULLER**, Jamestown, received the Legion of Honor award from State Farm Insurance Company at the regional convention in November.  
The Rev. **R. CLIFTON SUMMER**, High Point, was part of a United Methodist Church team of volunteer builders to aid Methodist congregations in Puerto Rico early this year.

**'57**  
Class Chairman: **Mary M. Stuart**  
Next Class Reunion — 1981  
**GERALD (SONNY) M. THORNTON**, Winston-Salem, is Director of the Forsyth County Department of Social Services. In his spare time, Sonny can be found working with the Little Theater. He recently starred in "Jabberwock."

**'59**  
Class Chairman: **Floyd T. Craven**  
Next Class Reunion — 1979  
**PATSY MOORE GINNS**, King, will have her book "Rough Weather Makes Good Timber," published this spring by the University of North Carolina press.  
**MAX G. LOFLIN**, Lexington, is a real estate appraiser with the N.C. Department of Transportation, Winston-Salem. His wife, **LINDA BRIGGS**, is a learning disabilities resource teacher in the Davidson county schools.

**'60**  
Class Chairman: **Betty Gray Dorman Brown**  
Next Class Reunion — 1980  
The Rev. **THOMAS J. HOWARD**, Thomasville, was part of a United Methodist Church team of volunteer builders to aid Methodist congregations in Puerto Rico early this year.

**'62**  
Class Chairman: **Larry D. Wilson**  
Next Class Reunion — 1982  
The Rev. **MAX FURR** is a Southern Baptist missionary to Peru. He and his family are currently on furlough and living in Winston-Salem.

**'63**  
Class Chairman: **Donna Lawrence Staley**  
Next Class Reunion — February 11, 1978  
**A. RAY MURPHY JR.**, Winston-Salem, is principal of Pilot Elementary School, Thomasville.

**CYNTHIA FLETCHER PETREA**, Kannapolis, teaches French and English at Northwest Cabarrus High School, Concord.

**DR. JOHN E. WARD JR.**, associate professor of biology at High Point College, has contributed a chapter to a book published recently by the University Press of Virginia. The book is a resource and reference work for the study of algae and fungi in the southeastern United States.

**'68**  
Class Chairman: **Jonathan L. Faulkner**  
Next Class Reunion — February 11, 1978  
**SUSAN ANN GRIFFIN CAMPBELL** is living in Pearl City, Hawaii, where her husband is in U.S. Navy communications and cryptology.

**SUSAN LEE APPELEGATE HUGHES**, Richmond, Virginia, teaches second and third grade reading. Her husband is a student at the Medical College of Virginia.

**EMILE PICKETT PARVIN**, Denver, Colorado, will be second vice president of Alpha Gamma Delta Alumni, Epsilon Iota, next year.

**'69**  
Class Chairman: **Ray and Jane Baity**  
Next Class Reunion — 1979  
The Rev. **JOHN W. LOCKMAN**, Charlotte, was part of a United Methodist Church team of volunteer builders to aid Methodist congregations in Haiti early this year.

**PATRICIA J. NANCE** teaches Title I reading, grades 1-4, in Virginia Beach, Virginia, public schools.

**C. MILLARD STALLINGS**, Mount Airy, is a general contractor with Blue Ridge Enterprises. His wife, **PATRICIA WIMBISH STALLINGS**, formerly taught third grade in the Surry county schools.

**'70**  
Class Chairman: **Richard H. Boyd**  
Next Class Reunion — 1980  
**JOYCE KAIT WATERMAN** is living in Dallas, Texas, where her husband is attending the Braniff Airlines flight school to become a commercial pilot.

**'72**  
Class Chairman: **John A. Young**  
Next Class Reunion — 1982  
**EDWARD F. GRUNE JR.**, Takoma Park, Maryland, is with the Scientific Research Division of KAPPE Associates as a research biologist.

**ROBERT S. SMITH**, Winston-Salem, has joined RJR Archer, Inc., as an accountant. He was previously a staff accountant with A.M. Pullen & Company.

**'73**  
Class Chairman: **David T. Wilson**  
Next Class Reunion — February 11, 1978

**TIMOTHY HATHAN ALLEN**, Salisbury, passed the State Board of Certified Public Accountants Examination in November.

**'75**  
Class Chairman: **Stephen L. Lawson**  
Next Class Reunion — 1980  
**KEITH B. CARLSON**, Silver Spring, Maryland, is regional sales manager for Byron's Barbeque Co., Inc., representing Virginia and Maryland.

**JAMES W. COBLE**, Atlanta, is a student at Candler School of Theology, Emory University, in preparation for the Master of Divinity degree.

**WILLIAM B. GRAY JR.**, Mt. Airy, is a District Executive with the Old Hickory Council, Scouting, U.S.A. He is responsible for scouting in Stokes and Surry counties.

**JOY R. GREEN**, New Castle, Delaware, has been promoted to District Executive for Brandywine District with Scouting, U.S.A. His wife is **BARBARA HARE GREEN**.

**DOUGLAS H. POTTER**, Auburn, New York, is a workshop supervisor in a rehabilitation center.

**'76**  
Class Chairman: **Robert E. May**  
Next Class Reunion — 1981  
**JERRY R. HOWARD**, Winston-Salem, teaches language arts and social studies at Glenn Junior High School, Forsyth county.

**ROBERT E. MAY**, Winston-Salem, is salesman for Modern Chevrolet Company.

## MARRIAGES

**PAMELA K. AMOS '79** and **JOHN D. MARSDEN '76** on March 5, 1977.

**Celia Sanford** and **JOHN CATHEY '78**, on August 14, 1976.

**Sybil Sanford** and **RON CATHEY '77**, on December 18, 1976.

**VIRGINIA C. DIX '73** and **John R. Wilson**, on October 16, 1976.

**PATRICIA A. GALUP '76** and **BRADFORD W. LOUCKS '76**, on January 8, 1977.

**Dawn Elizabeth Pacecca** and **THOMAS D. HAWKINS '74**, on May 15, 1976.

**JAN L. HENRY '72** and **Carr Douglas Bodenheimer** on January 1, 1976.

**LORI MCDADE '78** and **RONALD DUANE SMITH '76** on November 27, 1976.

**DEBRA SUZANNE ROYALS '75** and **Richard Groese** on August 7, 1976.

**MARGARET SATTERFIELD '75** and **ROGER K. OSBORNE '76** on June 5, 1976.

**Deborah Jean Carpenter** and **RICHARD RAY WATSON '75** on November 6, 1976.

## NEW ARRIVALS

A son, **Marc Alexander**, was born to Dr. and Mrs. **DAVID M. ABERNATHY '55**, on January 28, 1977.

A son, **William Lynn**, was born to **DELLA EMILIE AUMAN '67** and **WILLIAM W. HARRIS '62**, on November 10, 1976.

A daughter, **Angela Nicole**, was born to **Adolph A. and JACQUELINE POBLETTS BUCCI '73**, on October 24, 1976.

A daughter, **Allison Margaret**, was born to Mr. and Mrs. **THOMAS A. CARTER '72**, on November 27, 1976.

A son, **Benjamin**, was born to **Earle and SUSAN GREENHAUGH CHRISTMAN '72**, on July 22, 1976.

A son, **William (Wil) Ernest**, was born to **John Paul and ANGELA SMITH DAVENPORT '67**, on April 9, 1976.

A son, **Donald Max, Jr.**, was born to Mr. and Mrs. **DONALD M. DWIGGINS '64**, on March 10, 1976.

A son, **Michael Stanton**, was born to Mr. and Mrs. **JONATHAN L. FAULKNER '68**, on April 11, 1976.

A son, **George William, IV**, was born to **George W. and BARBARA MCDIARMID JOHNSTON '68**, on December 7, 1976.

A son, **Ray Donald, III**, was born to **SUSAN LEMONS '72** and **RAY DONALD SMITH, JR. '74**, on January 28, 1977.

A son, **Frederick Lewis**, was born to **DENNIS L. '71**, and **DIANNE WHITT MILLER '72**, November 4, 1976.

A daughter, **Carol Ann**, was born to **Larry and JUDY MUSGRAVE YARBROUGH '70**, on January 15, 1977.

## IN MEMORIAM

**DOROTHEA H. ANDREWS '35**, Washington, D.C., December 3, 1976.

**DOROTHY WALKER CUMMINGS '39**, Greensboro, February 4, 1977.

**NICK C. HALIPILIAS '55**, High Point, December 28, 1976.

The Reverend **TYRE GLENN MADISON '28**, Jamestown, March 8, 1977.

Dr. **EDGAR H. NEASE, SR. H'44**, Charlotte, January 7, 1977.

**SARAH GREYSON ROLLINS '53**, Asheboro, May 5, 1973.

**BANNER F. SHELTON '44**, King, October 13, 1976.

**W. HERMAN YOKELEY '34**, Thomasville, November 9, 1976.

## Seen at Alumni luncheons, banquet



THE BANQUET (left and right) was held at a downtown restaurant.



LEFT, the Class of '57 at luncheon. ABOVE, George Erath, with Mrs. Erath, hosted the Class of '52 (right) at Emerywood Country Club.

## Title 9 takes away old rules in college dormitories

AS RECENTLY AS 1960, High Point College women had rules governing how frequently they could date and what time they could go to the bookstore. Freshmen women, called "girls" in the rules of the Woman's Dormitory Council, could date only on Saturday and Sunday nights during their first semester. If they kept their grades up, they could also date on Friday nights, until 11 p.m.

College men (no one calls them "boys" any more) have universally been free of such regulations and now, the times and the law are bringing changes to the regulations for women.

Title 9 of the Educational Amendment of 1972 as interpreted by the Department of Health, Education and Welfare (HEW) is bringing changes to several areas of student life. Basically, the sexes must be treated equally; the law specifically prohibits discrimination against women. Dr. Murphy Osborne, vice president of student development, and William T. Guy, dean of students, have the primary responsibility for implementation of Title 9 on the campus.

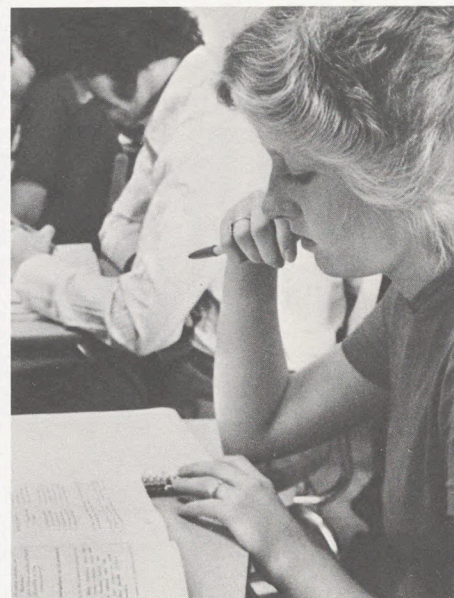
Guy is especially concerned with regulations in the dormitories. "We cannot have regulations for men that

don't apply to women, and vice versa. All the housing regulations must be equal across the board. If a certain conduct is a violation in Woman's Hall, it must be a violation in McCulloch Hall," he said.

All resident students must be able to come and go as they wish. Men have always been free of regulatory hours whereas women have always been required to be in by a certain hour when the door would be locked. Women have been limited in what they were to do outside the dorm and where they could go once they were outside.

In order to remove discrimination and still protect women, new kinds of precautions are being taken for their safety. Precautionary measures designed exclusively for the protection of women are not against the law. Women are given keys to a certain dormitory door. "If women were not abused by men in our society, we could leave all the doors open," Guy said. Should a woman lose her key, the entire lock system has to be reworked and new keys issued. Women are responsible for the financial burden of the special arrangement.

Greek-letter fraternities and sororities are exempt from the provi-



*THE COLLEGE has complied with the intent of Title 9 to stop discrimination against women on the campus.*

sions of Title 9 that usually apply to single-sex organizations. The social fraternities are private organizations and are not funded by public money in any way. At the same time, Alpha Phi Omega, the service fraternity, recently felt pressure to revise its membership qualification; it is now open to women.



*PRESIDENT Wendell M. Patton is shown greeting prospective students and their parents who came to the campus in February to compete for a possible total of \$100,000 scholarships. Awards include the \$5,000 Presidential Scholarships, the \$3,000 Honor Scholarships, and the \$2,000 Merit Scholarships.*

*Alumni-Senior  
Banquet – May 5*

## Parents Day has good news

OVER 250 PARENTS came to the College on March 5 for their annual visitation, Dr. Wendell M. Patton, president, reported to them that the College is in "excellent condition," both financially and academically.

The College is operating on a balanced budget, and enrollment is stable at about 1050 students. Approximately 76% of the costs is met by tuition and fees with the remainder from endowment, gifts and grants, and the support of numerous friends. Dr. Patton said that due to the good support from other sources, he hoped the tuition charge would not go up for next year.

Parents met with the faculty in the morning and heard a panel in the afternoon discuss "All you ever wanted to know about the academic program but were afraid to ask." Dr. David W. Cole, vice president — academic affairs was moderator; the four academic division heads, Dr. E. Roy Epperson, Dr. Richard R. Bennington, Mr. William F. Cope, and Dr. Owen M. Weatherly, were panelists.

In the evening the Fine Arts Department presented a varied musical program which was quite well received.

June 77

Second Class Postage Paid  
High Point, N.C.  
27262

# HIGHPOINTS

Published six times annually by High Point College,  
933 Montlieu Avenue, High Point NC 27262.  
Subscription \$1. per year payable by the College.  
Send change of address to above mailing address.  
Raymond A. Petrea, *Editor*  
Robert E. Williams, *Director of Alumni Affairs*

**Member**  
Council for Advancement & Support  
of Education

## Judge Alexander speaks at Graduation



VICKIE PARKS (above) got a standing ovation with her diploma. Her mother was given a special certificate; Vickie is blind. Speaker was Judge Elreta Alexander (below). Finally, it was all over but the smiling for Jennifer Stone and Rondra Plummer (right) and other members of the Class of 1977.



**HIGH POINT COLLEGE** gave degrees to 205 seniors on May 15 in traditional ceremonies including the baccalaureate service at Wesley Memorial Methodist Church and commencement in the Gym.

Dr. Wendell M. Patton, president, conferred bachelor's degrees on the seniors and honorary doctoral degrees on the Rev. George P. Robinson and Richard A. Short.

Dr. E. Roy Epperson received the Foy Distinguished Teaching-Service Award.

Judge Elreta M. Alexander, judge of the 18th judicial district of North Carolina, was speaker for graduation. Considering how power and materialism were waiting to consume them in "the grist mill of greed," Judge Alexander asked whether the seniors should view this period as a time of celebration or a time of lamentation. She urged them to be "exceeding glad as a strong man to run a race." This is the time, she said, where we have the first real opportunity for creative domination of the hostile forces delimiting our growth. "We can begin here and now to destroy the last vestiges of subjugation and dehumanization of our species. We are thinking and rational beings, able to alter our environment, change the direction of history. Formal education is an asset in this regard.

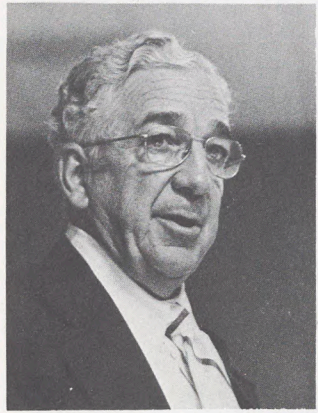
"The stature of liberty in any land is not measured by the extra-ordinary talented or privileged few men, but by the heights attainable by the least endowed and weak," she said.

Judge Alexander was the first Negro woman elected a judge in the U.S., in 1968. She was re-elected in 1972 by more than 50,000 votes in Guilford County.

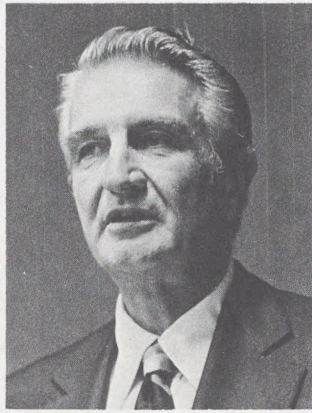
# HIGHPOINTS

Volume 53, No. 3 June 1977

## New advisory Board of Visitors organized, inaugurated



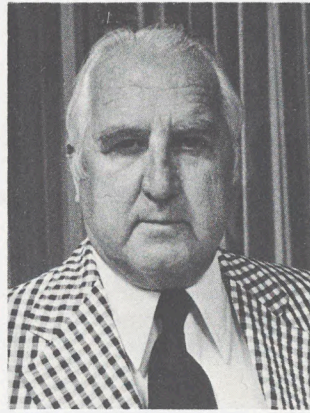
Pleasant



Womble



Black



Cloniger



LEE CAIN (left) described the work of a similar board at a neighboring institution, documenting how Visitors may be useful in the total program of the institution.

THE NEW VISITORS BOARD was inaugurated at dinner (left, and below) in the Trustee Dining Room, Holt McPherson Campus Center. Trustee chairman William F. Womble assured the Visitors of the desire of the Trustees for their assistance. Ed Pleasants (above) chaired a nominating committee. Officers (above) elected included D. Kermit Cloniger, chairman; Irvin R. Black, vice chairman; and Mike Fleming, secretary, not pictured.



**HIGH POINT COLLEGE** has completed selection of members for the Board of Visitors. Dr. Wendell M. Patton, president, announced the names of the members.

They will be expected to offer assistance to the overall administration of the College, to recommend ways of strengthening the financial position of the College, to support long-range planning, and as needs of the College are determined, to recommend solutions.

Members include: Fred W. Alexander, president of High Point Bank and Trust Co.; J. Allen Austin, president of Custom Processing & Manufacturing, Inc.; Mrs. Myrtle Barthmaier; Herman Bernard, president of Casard Manufacturing Corp.; Irvin R. Black, vice president of the Alderman Co.;

Eugene H. Bohi, vice president and general manager of WGHP-TV; Bobby M. Brooks, manager of the Sears, Roebuck and Company store; Samuel E. Burford, retired educator; Dr. R. Delbert Byrum, associate minister of Wesley Memorial United Methodist Church; William D. Caffrey, attorney, Greensboro;

E. Lee Cain, senior vice president of Wachovia Bank & Trust Co.; Jack M. Campbell, president and general manager of the Schoonbeck Co.; D. Kermit Cloniger, Cloniger Buick-Olds Co., Thomasville; Dr. Dennis H. Cooke, retired educator;

Ned Covington, of Harriss and Covington Hosiery Mills; R. Frank Dalton, vice president of Alma Desk Co.; J.D. Dobbins, president of First Federal Savings & Loan Association; Michael B. Fleming, president, Fleming-Shaw Transfer & Storage Inc., Greensboro;

Mrs. Henry A. Foscue; John C. Foy, secretary of Carolina Container Co.; Mrs. John C. Foy; R. Frank Gay, retired J.C. Penny executive; W.D. Goldston Jr., president of Goldston, Eden; G. Leon Green, president, Dependable Refrigeration, Inc.; Robert P. Gruenberg, vice president and treasurer, Southern Furniture Market Center;

Mrs. Charles Hayworth; Joseph Hayworth, general manager of Inner Pak of Carolina; D. Sam Hedgecock Jr., secretary and treasurer of Hedgecock Builders Supply Co. of High Point; Dr. Leo J. Herr, retired, former vice president, Southern Furniture Market Center and state legislator; Carter T. Holbrook, general sales manager, Carolina Container Corp.;

Frank Hunsucker, president, Highland Cotton Mills, Inc.; John G. Hutchens, president, Food World of North Carolina, Inc.; Clarence M. Ilderton, president, Ilderton Oil Co.; Mrs. I. Paul Ingle; C.T. Ingram Jr., vice president, treasurer, and general manager of Carolina Container Corp.; Lyles H. Kearns, vice president and treasurer of Young's Furniture and Rug Co. Inc., and president of the Alumni Association;

Clarence Keever Sr., president of Patrician Furniture Co.; R. Fred Lambeth, president of Acme Sample Books, Inc.; Robert K. Latta; Wayland H. Linthicum Jr., president of W.E. Linthicum & Son, Inc.; Mrs. George W. Lyles Jr.;

J.W. McGuinn, vice president and city executive of First Citizens Bank and Trust Co.; Mrs. Holt McPherson; James P. Marsh, vice president of Marsh Furniture Co.; Mrs. J.E. Millis; James Millis Jr., Adams-Millis Hosiery Mills; Dale C. Montgomery, vice president of Tri-City Holding Co.;

Howard R. Pancoast, president-emeritus of Bryant Electric Co. Inc.; Bob L. Parrish, agent, Smith-Broadhurst, Inc. (Greensboro); Earl N. Phillips Jr., vice president of First Factors Corp.; S. Dave Phillips, president of Monroe Mills Inc.; J. Edward Pleasants, senior vice president, North Carolina National Bank; Mrs. W.T. Powell;

Thomas C. Ragsdale, president and treasurer of Oakdale Cotton Mills, Jamestown; Joseph P. Rawley, secretary and treasurer of The High Point Enterprise, Inc.; the Rev. Henry I. Ridenhour, retired Methodist minister and business man; the Rev. George P. Robinson, superintendent of the High Point District, United Methodist Church; Mrs. Meredith Slane;

Miss Linda Smith, assistant secretary of McEwen Lumber Co.; Mrs. Edgar H. Snider, National Electronic Card Co.; Ralph Stockton, attorney, Winston-Salem;

Randall B. Terry Jr., president and co-publisher, The High Point Enterprise, Inc.; John W. Thomas Jr.; president of Thomas Built Buses; Royster M. Tucker Jr., vice president, secretary, and treasurer of North State Telephone Co.; and Robert G. Vaughn, Bob Vaughn Realty.

## Annual Fund supported by alumni and friends

THE ALUMNI ASSOCIATION has exceeded its goal of \$77,000 for the Annual Fund for 1976-77. The fund amounted to \$83,082.70 on May 31, the close of the current fiscal year.

The gifts will be distributed to the Alumni Chair of Higher Learning, Student Aid, the Golden Decade, and special projects suggested by the donor. All designated gifts will be assigned as requested.

The largest average gift came from the Class of 1929 with \$306 but the largest amount came from the Class of 1939 with a total of \$5,852. Other significant class totals include Class of 1929 with \$5,217 and the Class of 1970 with \$4,637.

Leading the way in the support of the total college experience are the contributor's clubs which recognize especially significant gifts. These are the Fellows Club for gifts of \$1,000 or more; the Lamplighter's Club, \$500 to \$999; the Tower Club, \$250 to \$499; and the Centurion Club, \$100 to \$249.

Max and Nancy Meeks '49 & '45, High Point, were

national co-chairmen for the drive. T.R. Hendrix Jr. '58 High Point was director of Advanced Giving.

Two innovative approaches were instrumental in securing support for the successful year. The fifty class chairmen wrote *individual* letters to classmates asking for a direct monetary contribution to Alma Mater.

A special mailing was sent in April to alumni who had contributed in 1975-76 but not during the current year. This appeal netted over \$3,500 to the Annual Fund.

Robert E. Williams, director of alumni affairs, said he was "gratified" with the results of all the effort that had gone into the program to make it successful.

The College tries to keep student charges as low as possible but at the same time makes every effort to provide quality education, adequate equipment and salaries, and broad student services. The difference between what students are charged and the actual cost of their education is made up by gifts from alumni and other sources.

## Alpha Chi, new honor society

ALPHA CHI, a national honor scholarship society, has chartered a chapter at the College and 53 members have been inducted.

Sponsors for the local chapter are Dr. James Stitt, Dr. John Ward, and Mr. William Cope. President of the new chapter is Sybil Richardson, Greensboro.

Alpha Chi promotes and recognizes scholarship and exemplary character. To be eligible for active membership, a student must be in the top-ranking ten percent of the junior or senior class.

The national body grants charters to institutions whose work is primarily academic in nature. Alpha Chi has over 120 chapters in 37 states and ten foreign countries with more than 51,000 active members.

## College has large gift from John Idol estate

**THE ESTATE OF JOHN D. IDOL** has provided the largest bequest ever received and implemented by High Point College. Final settlement of his estate may bring the total to nearly a quarter of a million dollars. The John D. Idol Memorial Scholarship Fund will be used to assist qualified students in any area of study although first preference will be given to those engaged in religion or medicine.



brief stay in Bucks County, Pennsylvania, came to North Carolina to settle near the Moravians. He acquired a royal grant of 150 acres and the name became anglicized. John D. Idol was the son of Junius Jacob Idol and Bessie Clinard Idol, buried at Abbots Creek Church.

Additional beneficiaries of his estate include the University of North Carolina at Chapel Hill, Maryfield Nursing Home, High Point Memorial Hospital, N.C. Arthritis Foundation, House of Prayer, N.C. Heart Association, American Cancer Society, St. Mary's Episcopal Church, the High Point Y.M.C.A., and various members of his family.

Mr. Idol was a salesman for the Adams-Millis Corporation for his entire career following graduation from the University of North Carolina at Chapel Hill. He and his brother Percy, also a salesman with Adams-Millis, covered most of the Atlantic seaboard for over 40 years. Mr. Percy Idol is retired and living in High Point.

Mr. Idol lived on the family homeplace, a farm on Highway 66 about a mile eastward of Highway 311, with his mother and a sister, Miss Mattie Ruth Idol, until his death September 27, 1974; he was 66. Miss Idol now lives at The Presbyterian Home.

The Idol forebears, strong German stock, came to this country over 200 years ago. Johann Barnhart Eitel left Germany in the early 1700's, and, after a

In discussing his brother's will, Mr. Percy Idol said that John "saw the work that High Point College was doing in the community and wanted it to continue. He saw the value of the independent church-related college and he felt this kind of education should be preserved."

Present receipts by the College from the estate exceed \$215,000. When certain remaining trusts are liquidated and distributed, the final receipts may approximate \$300,000.



*THE COLLEGE CHOIR, directed by Dr. James Elson, chairman of the fine arts department, sang two selections during the Baccalaureate at Wesley Memorial Methodist Church. Graduates, parents, faculty, and friends provided a full house for the occasion.*

## Robinson calls for integrity

**AFTER TELLING OF A SOLDIER** who was given a few minutes to write a farewell note before his execution by the enemy, the Rev. George Robinson asked the baccalaureate congregation at Wesley Memorial Methodist Church, "What would you have written to your eight-year-old son if it were the last word you could speak to him?"

"Not popularity, success, security, or happiness, but the word is integrity," he said. To have integrity means to own your own soul. It means you are not for sale. And some men do not have a price, despite the old adage.

"When faced with a difficult choice, we should be concerned with loss of integrity, or character, or self respect. Most of us sell our souls . . . a little cheating, a little lie, a little compromise, and the first thing we know, we have sold ourselves," he said. Integrity is holding to your true self under God to the point that your soul is not for sale at any price.

To have integrity is to be more concerned about truth than about masks, or images. Instead of groping and grasping for our little status symbols, we need to do what is right despite the cost and to be free to be ourselves under God. From the time we are small children and we see others around us wearing masks, with their petty dishonesty, and hypocrisy, we grow up molded by social pressures around us.

The Rev. Mr. Robinson cited a business magazine telling how a young executive may rise through the ranks. The list he shared including advice to socialize with those above, but never below, to take up the bosses' hobbies, to establish a personal image more conducive to the next management level up, and to conform to the image desired by the company.

To have integrity is to live up to our responsibilities. His word means something if a man has integrity. He takes his promises seriously. He respects people and their rights and privileges. He respects law, decency, and he is a responsible member of the community. But this is the age of the goof-off, people who are content with things only halfway done. Too many of us do not come through, and substitute alibies for performance.

There is no way you can have integrity and not give 100% of yourself, whether to the job, college studies, a piece of poetry, or a work of art or a game of golf. Responsible involvement with the world and people is required. The meaning of life is interwoven with our personal relationships with God and with other people and with the physical world in which we live.

To truly worship God is to be concerned about man's hunger, his lostness, and the injustice and inhumanity of man to man, and to try to do something about it. Our creeds must be backed up with deeds.

The imperative of the Christian faith is doing something. We need grace to make ourselves vulnerable in the face of human need, grace to involve ourselves, grace to love, grace in a hurting, dying, suffering, broken world.



*SENIORS were guests of the Alumni Association at the Top of the Mart for the annual Banquet. Guests included (above, standing) Dr. James Fowler, retired executive director of the College Coordinating Council, Board of Higher Education, WNCC, United Methodist Church.*

## Hollingsworth challenges seniors at banquet

**DR. L.H. HOLLINGSWORTH**, minister of Emerywood Baptist Church, spoke at the Alumni Senior Banquet on May 5.

Dr. Hollingsworth told the seniors they could do two things with their diplomas. "You may bury it, and maybe for some that would be appropriate. Or, you may offer it as your credential to humanity.

"If you choose the latter course," he said, "you are vulnerable to the requirement of humanity that you demonstrate the competence (which) your testament from the college promises that you have. It is a declaration that you know something — and the world will surely ask of you, 'What do you know!'"

He said one of the things retained from a college education is the "powerful influence of persons we encountered within the framework of history or chemistry or political science. The idea of a college is encounter between teacher and learner in the experience which, at its best, is not so much exchange as it is a kind of intellectual and spiritual fusion. It may deal with formulae or propositions, but its product is not likely to be either.

"My deepest appreciation for liberal arts education lies at the point for which it is most criticized by those who make no distinction between learning and training. The testament of the liberal arts school is that we have been taught not how to make a living so much as how to live, how to make a life! We ought to know that the quality of life is measured in purpose, in depth, and in breadth," he said.

## Scholarship officer named

**MRS. LOUISE NOWICKI** has been promoted to financial aid officer at the College. Mrs. Susan Nisbet resigned the position to move out of town with her husband and family.

Alumni who assist prospective students in securing financial assistance should refer them to Mrs. Nowicki. She will supervise the College's program of grants, loans, scholarships, and work study.

Mrs. Nowicki joined the business staff at the College in 1970 and has worked closely with the program of financial aid.

"You should know what truth is. It is true that 2+2 = 4 but that is not truth; it is merely fact. Truth has to do with meaning and can never be contained in any equation. Truth is alive; it is never static. Truth is forever moving. It is constant in terms of its integrity, not its shape. That is forever adjusting to meet and match the contours of new and changing challenges.

## Teams rewarded for season

**COLLEGE TEAMS WON CHAMPIONSHIPS** in baseball, soccer, women's tennis, volleyball, and women's basketball. No other Carolinas Conference team won more than one championship. The College was awarded the Joby Hawn Cup for the second straight year. The number of championships is unprecedented in the Conference.

In baseball the Panthers had their second-best season ever, 37-12, and went to the finals of the District 26 playoffs. Kevin Keene, pitcher, was named Most Valuable Player in the conference tournament.

Lady Panthers took 8 of 9 flights in the conference tennis tournament and posted a 14-2 record for the year. Freshman Sally Tessler was named conference Player of the Year.

The men's tennis team won their sixth consecutive district title and a berth in the national tournament at Kansas City. They ended the season with a 19-9 record in overall matches and finished second in the conference.

The track team took second place in the conference meet with All-Conference selection Lance Sorchik winning the javelin throw.

Golfers had a good season with a 17-8 match record but finished fourth in the conference and district.

Most Valuable Player awards in each sport went to: Gary Downing, Smithtown, New York, soccer; Wanda Wilson, Thomasville, Volleyball; Debra Weber, Vienna, Virginia, field hockey; Mark Hamlett, Baltimore, Maryland, cross country; Ray Coble, Greensboro, basketball; Wanda Wilson, Thomasville, basketball; French Bolen, Greensboro, golf; Sally Tessler, Cheshire, Connecticut, tennis; and Lance Sorchik, Sussex, New Jersey, track. Baseball and tennis awards had not been announced at press time.



## Commencement honors to Epperson, Short, Robinson

**DR. E. ROY EPPERSON**, professor of chemistry, head of the department, and assistant dean of the College, won the John C. and Kathleen Y. Foy Distinguished Teaching-Service Award at commencement. The award consists of a Savings Bond of \$1,000 and a certificate of presentation. His name will be engraved on the permanent plaque at the College.

The Foy Award recognizes outstanding classroom performance, interest in students, community and church interest, production of scholarly papers, interest in professional growth, and participation in professional organizations.

A key phrase in the Citation noted that Dr. Epperson is "highly respected for the rigor of course content and (his) ability to make students learn, sometimes in spite of themselves."

**RICHARD A. SHORT**, '40, Executive Director of The Presbyterian Home, Inc., received the honorary Doctor of Humanities degree at Commencement. The degree recognized his outstanding service to the aging both on the local and on the national scenes.

Short was president of the American Association of Homes for the Aging



Epperson



Short



Robinson

from 1973-75 and received their top award last year. He has served with numerous community and church agencies dealing with humanitarian care, and has been an officer of these agencies.

Short graduated from High Point College and, after service in World War II, returned to his Alma Mater as a member of the staff. He joined the Presbyterian Home at its founding in 1951 and has directed its growth to more than 250 residents now.

**THE REV. GEORGE P. ROBINSON**, superintendant of the High Point District, United Methodist Church, received the honorary Doctor of Divinity degree

at Commencement. The degree recognized his leadership in the Church and in the community.

Robinson served four congregations in the Western N.C. Conference before coming to High Point last year. He has served on several boards, including the Methodist Home, Triad Methodist Home, Duke Pastor's School, Ordained Ministry, Planning and Research, and the Bi-Conference Committee on the Campus Ministry.

He is on the new Visitor's Board of High Point College and has served with Urban Ministry, Mental Health Clinic, and other such groups.

## Suggestions for new library from students and faculty

**WHERE WILL THE NEW LIBRARY** be located on the campus? What kind of facilities should it include? What do you want to see improved in services or holdings?

These are the kinds of questions faculty and students have been answering for the Library Committee as it continues to study the overall project of upgrading the College's library facilities. Both the faculty and the students were handed four pages of questions and preference lists early in May and the results are being given close attention by the Committee.

J. Harriss Covington, chairman of the building and grounds committee of the Trustees, Dr. Warren Bird, consultant, and Earle Dalbey, project coordinator and business manager of the College, met with members of the Committee and the library staff for a progress report last month.

Little question remains about the inadequacy of the present library facility. Built in 1937, Wrenn Memorial Library has been kept in service long past its

capability of serving the needs of the College.

While renovation may solve some of the more glaring deficiencies, expenditure of funds in that direction would serve only to delay the inevitable, it is generally believed.

Members of the Committee have visited other libraries and facilities to observe options in both programs and buildings that may be available to the College. The Committee's approach is from the "inside out," that is, to decide what is to happen inside the building first. Then the proposed use of the building will determine its floorplan and shape.

Site selection is proceeding slowly with the committee taking into consideration the overall campus plan. Much consideration is also being given to the energy requirements of a new building. Fuel, lighting, and air conditioning costs are matters of vital decision, affecting the year-to-year operational cost of the building.

No target date has been set for the

announcement of a funding campaign or the groundbreaking of a building. Solicitation of gifts, employment of an architect, site location, as well as completion date of the project, will be given continuing consideration by all concerned.

## Scholarships bigger

**THE COLLEGE HAS** increased the amounts of the highest academic scholarships available to incoming students. These are the Presidential, the Honor, and the Merit Scholarships, given to students with an outstanding academic record and who show promise of excelling in leadership.

Values have been increased to \$1,250 for Presidential, \$750 for Honor, and \$500 for Merit scholarships. All are renewable up to four years with maintenance of a high grade average.

Alumni are invited to recommend students to the Admissions Office who may wish to compete for the awards.

# HIGHPOINTS

Second Class Postage Paid  
High Point, N.C.  
27262

Published six times annually by High Point College,  
933 Montlieu Avenue, High Point NC 27262.  
Subscription \$1. per year payable by the College.  
Send change of address to above mailing address.

Raymond A. Petrea, *Editor*  
Robert E. Williams, *Director of Alumni Affairs*

Member  
Council for Advancement & Support  
of Education  
Volume 53, No. 4, August 1977

Summer issue

## College has good year in Annual Fund with average gift \$63

HIGH POINT COLLEGE ALUMNI gave \$83,082.70 to the 1977 Annual Giving Fund to top the goal by more than six thousand dollars. The 1977 goal was \$77,000.

More than 22% of the alumni who were solicited for the campaign responded with gifts to support the Alumni Chair of Higher Learning, scholarships, the Golden Decade capital expansion, and other designated contributions. The average gift was \$63.23 from the 1,314 contributors to the annual fund. Nearly 6,000 alumni were given special opportunities to make their donations. The Class of 1927 had 100% participation of their class in the Fund. The largest class total was \$5,980, given by the Class of 1930.

Plans are underway for next year's Annual Fund, with a goal of \$78,000.

## Curriculum revisions suggested by Dean Cole in faculty news

DR. DAVID COLE, Academic Dean of the College, was the subject of a feature article in the Greensboro Daily News. He advocated returning to the "basics" in education, and said that he would suggest a new curriculum to the college that would require 38 hours as opposed to the 15 now mandatory at the College. His suggestions include 8 hours of science, 6 of English, 6 of history, three semesters of mathematics or logic, 3 hours of philosophy, 3 hours of religion, 3 hours of fine arts, and 6 hours of language. The faculty will consider the proposals through the regular channels of curriculum changes.

DR. ALLEN THACKER, director of teacher education at the College, has been appointed by the State Board of Education to serve on the N. C. Advisory Council on Teacher Education for a term ending in 1980. The committee will develop and stimulate maximum cooperation of all agencies and groups in the state concerned with pre-service education, certification, and staff development.

WILLIAM T. GUY, Dean of Students at the College, has won a study-work fellowship at Memphis State University, Tennessee, to complete his doctoral degree. He will be on leave from the College for the 1977-78 academic year. He will be assigned to the Center for Higher Education where he will develop a materials center and take necessary courses. He expects to return to his position at High Point College in 1978.

## Panther Club assists in field as memorial to John Crowder

THE JOHN CROWDER MEMORIAL FIELD, located on the campus near Lexington Avenue, has been completed. Ground was broken for the field late in May and the entire area has been grassed. The facility will be used by the physical education and athletic departments for the intramural program, physical education classes, and recreation.

The High Point College Educational Foundation, usually called the Panther Club, is in a fundraising campaign with a goal of \$6,500 toward the completion of the project.

John Crowder, High Point, was an enthusiastic member of the Panther Club for many years and was involved in numerous local activities. He was affiliated with the American Business Club, the Salvation Army Board, the Boy's Club Board, American Red Cross, and the Blood Bank. He was chosen Young Man of the Year in 1961 and was one of the three Outstanding Young Men in North Carolina the same year.

THE GROUP OF relatives and friends who were invited to the groundbreaking included (l to r) Dr. Wendell Patton, Richard Crowder, Kermit Cloniger, Bob Latta, Leon Green, Fred Lambeth, Jerry Steele, Mrs. Crowder, Earle Dalbey, Mrs. Cloniger, Tom English, and Harry B. Finch. Green is president of the Panther Club.





THE FORSYTH CHAPTER of the Alumni Association held its 25th Anniversary Banquet in June at Centenary Methodist Church, Winston-Salem. Miss Louise Adams was the speaker for the dinner (right) attended by 75 area alumni and College personnel. Renny Breedin '74 is president of the Chapter. Mrs. Nancy Shelton, Education professor, won the Alumnus of the Year Award.



### Miss E. Vera Idol, faculty member from founding until 1958

MISS E. VERA IDOL, 91, died July 17 in The Presbyterian Home. She had been in declining health for four years and was seriously ill for several weeks. She was a much-loved, respected, and highly competent professor of English at the College from its founding in 1924 until her retirement in 1958. She taught evening classes from 1961 to 1967.

The College awarded her an honorary doctoral degree in 1974. She was the author of several books, poems, and magazine articles. She held earned degrees from Greensboro College and Columbia University. She had also studied at Oxford University, Peabody College, UNC-Greensboro, and UNC-Chapel Hill. She belonged to Wesley Memorial United Methodist Church and taught Sunday School for many years.

Four of her former students, Unity Nash Funderburk, Eleanor C. Young, Robert Rankin, and Lyles Kearns, are heading a drive to establish a memorial scholarship fund at the College. The scholarship will go to an English major.

### Alumni Tour participants must be "active" in association

The Executive Committee of the Alumni Association has adopted new eligibility regulations for participants in the various continental and overseas trips offered under the Alumni Tour Program. The changes are designed to bring the tours more in line with the total College program and to make certain that tour participants are "active" members of the Alumni Association.

Only "active" members of the Association will be able to travel with the tours. Non-alumni friends, students, parents of students, and faculty and staff of the College may travel with the groups as "associate members". In all cases, "active" and "associate" membership will be defined as having contributed a minimum of \$25 to the annual fund of the Association in the fiscal year during which a tour is planned. Members of the family may accompany an alumnus or associate member without additional gifts. The Alumni Office has detailed regulations on file for anyone who wants a copy.

### New faculty members boost several departments for fall term

SIX NEW FACULTY MEMBERS have been announced by President Wendell M. Patton. ERNEST PRICE JR. is professor of human relations and chairman of the department. He was previously deputy director of personnel services of the national board of YMCAs, Glen Ridge, N. J. He has had a 37-year career with the YMCA, holding several posts before becoming deputy director in 1969. He earned a bachelor's degree from Mississippi State and a master's from Columbia University. He is a director of American Humanics, sponsoring agency of the human relations program at the College.

RICHARD A. STIMSON is assistant professor of business administration and economics. He has had a long career in public relations and business consultation. He was previously president and treasurer of a Ft. Lauderdale, Florida, public relations firm. He has had other positions with Price Waterhouse & Co., American Petroleum Institute, American Bankers Association, and American Textbook Publishing Institute. His degrees are from Yale University and Florida International University.

DR. ALAN PATTERSON is associate professor of physical education and health and chairman of the department. He left a similar post at Pfeiffer College. He is widely recognized as an outstanding leader in his professional field. He earned undergraduate and master's degrees from St. Lawrence University and his doctorate from Univ. of Tenn.

LARRY B. KEESEE is assistant librarian. He has been with the Greensboro Public Library before coming to the College. He has had previous experience with Sweet Briar College and the National Archives. He is a graduate of The American University and has earned his library science degree from UNC-Chapel Hill.

JAMES "MIKE" GLOVER, a 1976 graduate and captain of the varsity basketball team, is assistant basketball coach and instructor in physical education. He was an outstanding student leader, with membership in the Scholastic Honor Society, Lighted Lamp, and Who's Who Among Students.

WANDA BRILEY is instructor in physical education, and volleyball and women's basketball coach. She replaces Jennifer Alley who has moved to the University of North Carolina. Miss Briley earned her B.S. degree from the University of South Carolina and her master's degree from Appalachian State University. She was an outstanding undergraduate athlete and has been active in professional associations.

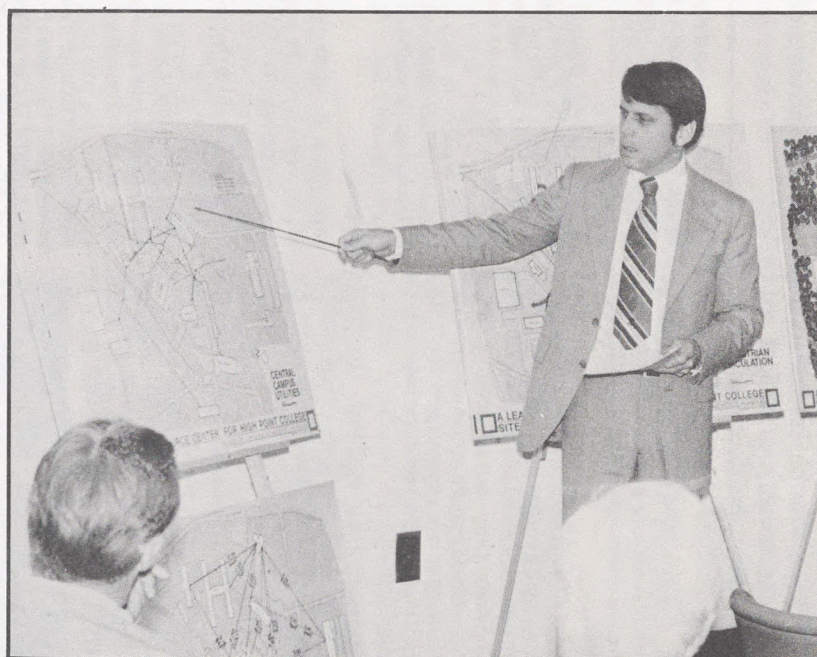
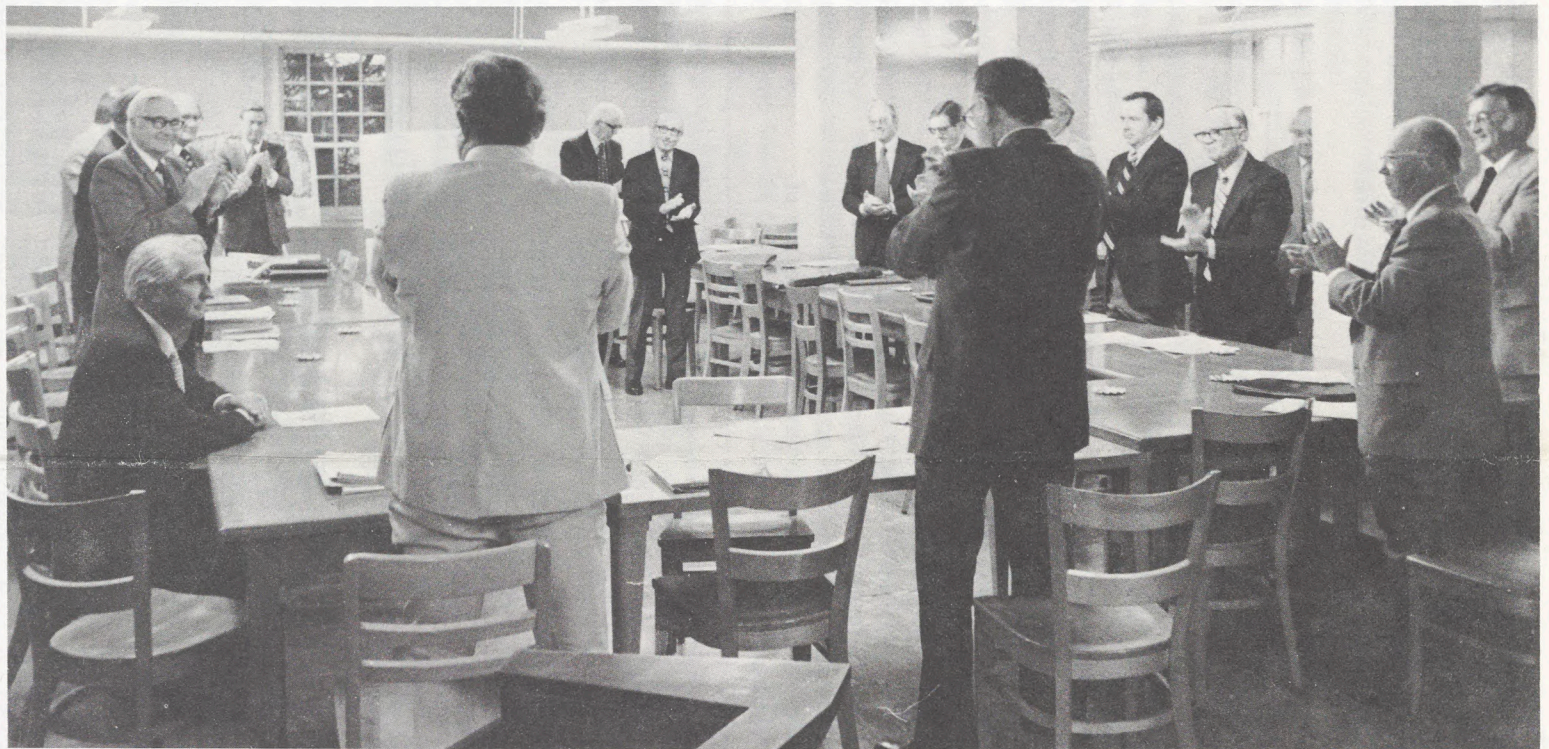
# HIGHPOINTS

Second Class Postage Paid  
High Point, N.C.  
27262

Published six times annually by High Point College,  
933 Montlieu Avenue, High Point NC 27262.  
Subscription \$1. per year payable by the College.  
Send change of address to above mailing address.

Raymond A. Petrea, *Editor*  
Robert E. Williams, *Director of Alumni Affairs*

Member  
Council for Advancement & Support  
of Education



*STANDING OVATION* was given to Trustee William F. Womble (above, seated) for his service as chairman of the Board for the past three years. Trustees held their business meeting in the basement of Wrenn Memorial Library.

*THE BUILDINGS AND GROUNDS COMMITTEE* reviewed basic problems involved with building a new learning resource center. "Will Harrison Hall be removed to put the library there? Will McCulloch Hall be replaced with a new dorm? Will alumni, friends and supporters of the College give generously enough so the College can build the facility that is urgently needed?" Tune in the next trustee meeting and see whether . . .

John Anderson, local architect (above) used large drawings of the campus to illustrate to the trustees some of the problems in considering site selection.

# HIGHPOINTS

Volume 53, No. 6, December 1977

## Alumni appointed to lead drive for goal of \$78,000

**NATIONAL CHAIRMAN ARTHUR R. BOOKOUT '39** and Advanced Giving Chairman Gordon "Yogi" Yarborough '64 will lead High Point College alumni to a goal of \$78,000 for the 1977-78 Annual Fund.

The entire membership of the Alumni Association will receive a letter from Art and from the Chairman of each Class, requesting gifts to the Fund. The letters, to be sent from the College in January, will include an envelope for a check (or other form of contribution) and a space for writing news for Class Notes.

The \$78,000 will support the Alumni Chair of Higher Learning, the Golden Decade and scholarships. All gifts not marked for a particular purpose ("unrestricted gifts") will go into the Alumni Chair fund. Support for the Chair fund, an endowment to provide a professor's salary, is expected to reach the goal of \$150,000 in 1979. Contributions from June 1974 to May 1977 totaled \$86,943.86. When the full \$150,000 has been contributed, a member of the faculty will be designated as

holding the Alumni Chair of Higher Learning.

All gifts to the Annual Fund except those otherwise designated by the contributor remain on deposit as part of the total endowment of the College. Gifts to the Annual Fund are not spent on current operation of the College but are invested for maximum return.

As National Chairman, Art heads the organization of class chairmen and other alumni workers who assist in the all-alumni solicitation. Art is manager of the Design and Construction Division of Hercules, Inc., Wilmington, Delaware, a diverse chemical company. He is a member of the Delaware State Board of Engineering Examiners. He is a leading layman of the Lutheran Church in America at both the congregational and synodical levels.

Yogi is president of his own company, related to the furniture industry in High Point. Active in civic and church affairs, he holds leadership posts with the American Business Club, Boys Club, YMCA, the Beddington Street Mission and the Chamber of Com-

merce. He teaches a class of four-year-olds at Wesley Memorial United Methodist Church and is chairman of the scholarship committee of Nido Quebein & Associates.

Last year's Fund contributed \$83,082 to the College, distributed to the Alumni Chair, Golden Decade, Scholarships and other named designations. Contributions came from 1315 alumni, or 22% of the membership.



Yarborough '64



Bookout '39

## Trustees in annual meeting



**CHAIRMAN Hayworth** (left), shown with Trustee **Robert B. Rankin**, has been on the board of the College since 1956. Previously vice chairman, he is known as one of North Carolina's foremost industrial and civic leaders.

**CHARLES E. HAYWORTH**, president of Alma Desk Co., was named chairman of the trustees at their annual meeting. Trustees selected other officers, adopted a revised charter, and inaugurated a new committee structure.

W. Roger Soles, president of Jefferson-Standard Life Insurance Co., was elected vice chairman. H.H. Smith, president of McEwen Lumber Co., was named treasurer. Dr. Wendell M. Patton, president of the College, was re-elected secretary of the board and Earle G. Dalbey, vice president for business affairs, was re-elected assistant secretary.

In addition, two longterm trustees, H.B. Finch, Thomasville, and Judge Dan K. Moore, Raleigh, were named honorary life members of the board of trustees in recognition of their "years of faithful and devoted service."

A major shift in the structure of the board provides for six standing committees to assume a large role in the work of the trustees. They are the executive, academic affairs, business affairs, student affairs, college affairs, and honorary degree committees.

Trustees re-elected for four years include R.T. Amos Jr., president, Amos Hosiery Company; David L. Francis, president, Marsh Mortgage Co., Charlotte; Holt McPherson, editor emeritus, The High Point Enterprise;

Dr. W. Joseph May, associate professor of obstetrics and gynecology, Bowman Gray School of Medicine, Winston-Salem; Mrs. Katy MacAulay Rankin, Mount Gilead; and Robert B. Rankin, Haywood & Rankin Insurance Co.

## Involvement of Alumni sought for recruiting

**HIGH POINT COLLEGE** Alumni have been asked to assist in the total Admissions program of the College. The future strength of the College may depend on how well Alumni cooperate in keeping the enrollment full and stable.

"The current enrollment of 1004 is not a cause for panic. This is within a fraction of our optimum operational strength. At the same time, we want to take steps to increase this number closer to 1100 in the immediate future," Vice President Murphy Osborne said.

The Board of Trustees recently set 1100 students as one of the goals of the College over the next five years. Campus facilities, size of the faculty and classroom space will be best-used for a student body of 1100.

Dr. Osborne outlined the specific ways in which alumni can assist in the recruiting program:

\***ALUMNI** are requested to hand the application blank recently received to a personal friend or acquaintance who is a high school senior considering college. The recommendation of the alumnus works

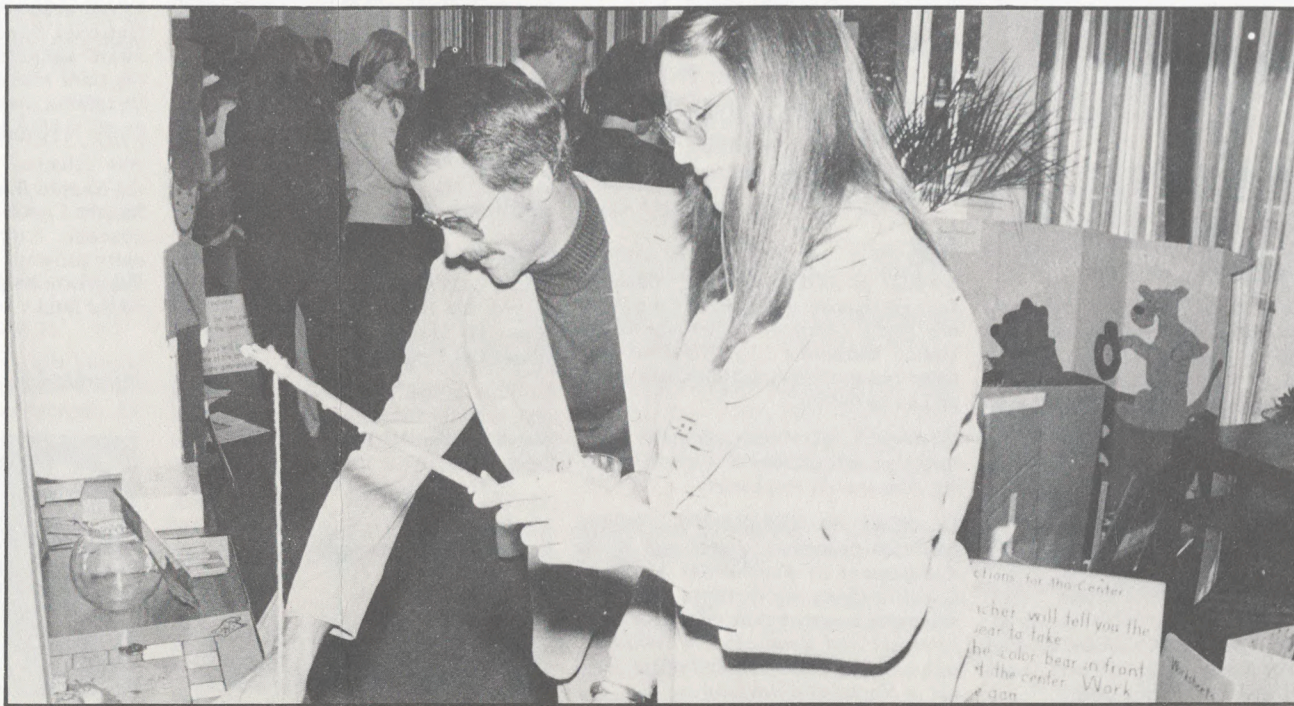
two ways: the College will waive the \$10 fee usually required to process an application and the prospective student is more likely to give consideration to a college personally recommended by an alumnus.

\***ALUMNI** can be of assistance in College-night programs in local high schools. A schedule of College-nights has been mailed to alumni. By attending the local College night and assisting in the High Point College display or booth, an alumnus can offer on-the-spot answers to prospective students who inquire about the College.

\***ALUMNI** can furnish names of prospective students to the Admissions Office. A broad mailing list is essential to communicate as directly as possible with prospective students. News, folders, letters, phone calls, and personal visits can all be used to encourage prospective students to consider High Point College.

Vice President Osborne said the College will maintain "quality" as the first priority. "The College will not lower admission standards to keep the enrollment high," he said.

**COLLEGE STUDENTS** expecting to intern in the High Point city, Guilford and Davidson county schools displayed their instructional materials (Below) in the Holt McPherson Campus Center lobby. Supervising teachers and principals were invited to the display. The materials were designed to help meet the various learning styles among children in the kindergarten through ninth grades. Student interns (the program was formerly called practice-teaching) will work in area schools until December 15.







# Good seasons in field hockey, soccer, volleyball



JORGE NOBRE (4), freshman, Alexandria, Virginia, starts a drive through two Pembroke defenders.



JEFF POTTER (13), senior, Baltimore, Maryland, beats an opponent to "give the ball some head."

**TWO CONFERENCE CHAMPIONSHIPS** and several school records characterized the fall sports programs at the College.

The field hockey team swept the state scene with a 14-1-1 record before being upset in the state finals by N.C. After losing the first game of the year, the Panthers took the next 9 games. The streak included wins over Duke, North Carolina, UNC-Greensboro, East Carolina and ASU. Outstanding players included Patti Wooten, Linda Ensey, Alice Wainwright, Sharon Kaler, Robin Eisenbray, Vickie Williams and Stephanie Higgins, freshman goalkeeper, who posted ten shutouts.

The Panthers set school records for the most wins in one season, most shut-

outs in a season, and longest winning streak in a season. Head coach Kitty Steele said she was "very pleased."

The soccer team had a rough start, winning only one of the first six games. They regrouped and won eight consecutive contests including seven shutouts. The team qualified for the District 26 play-offs for the fourth year and won the Carolinas Conference title for the second straight year.

Victims during the season included sixth-ranked Pfeiffer, Guilford and six-time District 26 champion Belmont Abbey. The Panthers lost a close contest (3-2) to nationally-ranked ASU in overtime; they gave up only one goal in six conference games and one goal in eight district contests. Leading players were

Todd Miller, Walter Roe, Jeff Potter, Doug Challenger, and Mel Mahler. Coach Ken Chartier said they went "back to the basics" after the early losses.

In volleyball, the Panthers have taken a 29-7 record to the NCAIAW State Tournament. They won the Conference title for the third straight year; since becoming a conference sport three years ago, the Panthers have not lost a volleyball match to a conference opponent.

Top players this year included Marie Riley, Karen Christoffersen and Roberta Riley. Marie was selected the Most Valuable Player in the conference and Roberta and Karen were chosen All-Conference. Coach Wanda Briley joined High Point College during the summer.

## Men's Basketball Schedule

December 3	Elon College	High Point
December 10	Guilford College	High Point
December 30	Gardner-Webb College Tournament	Boiling Springs
December 31	Gardner-Webb Holiday Tournament	Boiling Springs
January 4	Winston-Salem State	High Point
January 7	Elon College	Burlington
January 11	Pembroke State University	Pembroke
January 14	Lenoir-Rhyne College	Hickory
January 18	Gardner-Webb College	High Point
January 21	Catawba College	Salisbury
January 25	Barber Scotia College	Concord
January 28	Pfeiffer College	Misenheimer
February 1	Atlantic Christian College	High Point
February 4	Lenoir-Rhyne College	High Point
February 8	Pembroke State University	High Point
February 11	Catawba College	High Point
February 15	Belmont Abbey College	Belmont
February 18	Guilford College	Greensboro
February 20	Appalachian State University	Boone
February 22	Gardner-Webb College	Boiling Springs
February 25	Pfeiffer College	High Point
February 27	Carolinas Conference Tournament	Lexington
February 28	Carolinas Conference Tournament	Lexington
March 3	Carolinas Conference Tournament	Lexington

## Women's Basketball Schedule

December 1	Pfeiffer College	High Point
December 3	Wake Forest University	High Point
December 10	Elon College	High Point
December 20	Carolina Christmas Classic	Chapel Hill
January 6	N.C. State University	Raleigh
January 10	Shaw University	Raleigh
January 13	Clemson Tournament	Clemson, S.C.
January 14	Clemson Tournament	Clemson, S.C.
January 17	UNC-Greensboro	Greensboro
January 19	A&T State University	High Point
January 21	Catawba College	Salisbury
January 24	East Carolina University	Greensboro
January 26	Appalachian State University	High Point
January 28	Pfeiffer College	Misenheimer
January 31	Guilford College	Greensboro
February 3	Mars Hill College	Greensboro
February 4	Western Carolina University	High Point
February 8	Pembroke State University	High Point
February 11	Catawba College	High Point
February 13	Wake Forest University	Winston-Salem
February 15	North Carolina Central University	High Point
February 18	A&T State University	Greensboro
February 20	Atlantic Christian College	Wilson
February 23	NCAIAW State Tournament	TBA
February 27	Carolinas Conference Tournament	Lexington

## Alumni trips scheduled

**THE ALUMNI TRAVEL PROGRAM** for 1978 includes trips to Mexico, Switzerland, Greece, Bavaria, and Rome. Alumni interested in any of the trips should contact the College immediately.

First trip is the Acapulco holiday, January 10-17, at a cost of \$481 to \$579 with a Charlotte departure. Later trips include: Switzerland, May 19-27, cost of \$550, Charlotte departure; Greece, June 11-18, cost of \$689, North Carolina departure; Bavaria, September 19-27, \$689 or \$769, Greensboro departure; and Rome, October 26-November 3, \$575, Charlotte departure.



# HIGHPOINTS

The Annual Report  
1977

**H**igh Point College has many friends and associates who give generously of themselves in the cause of higher education. Specifically, their generosity toward High Point College enables young men and women to be better equipped for leadership in the world around them. In a world that grows increasingly smaller and where interdependence is vital, the value of a degree from a church-related liberal arts college becomes greater each year. Knowledge is not enough; facts must be related to value judgments and priorities if planet Earth is to remain hospitable to the human race. Set in this global framework, the support of higher education is a resounding hope and affirmation of the viability of mankind.

With gratitude, the College calls attention to its benefactors. Without them the past would have been difficult and the future would be impossible. The additional funding provided by the private sector has never been more vital to the cause of education; the College's appreciation has never been greater.

\*\*\*

High Point College is an accredited four-year liberal arts college offering the Bachelor of Arts and the Bachelor of Science. It is affiliated with the United

## Record of Support

The Annual Alumni Fund was activated at High Point College in 1961-62. The chart below gives a year-by-year account of Alumni participation in this important contribution to the life and work of Alma Mater.

	Percentage	Alumni Donors	Unrestricted Gifts*	Alumni Fund Total
1960-61	2.0%	110	\$ 469.78	\$ 570.00
1961-62	18.0%	1,026	5,175.35	5,770.00
1962-63	25.5%	1,381	8,515.89	13,990.00
1963-64	25.0%	1,508	9,323.60	15,358.00
1964-65	31.2%	1,873	13,028.16	19,940.19
1965-66	15.3%	950	7,327.60	29,197.88
1966-67	35.8%	2,232	12,081.08	58,498.87
1967-68	40.0%	2,564	17,597.00	57,837.52
1968-69	37.5%	2,471	22,307.75	49,424.48
1969-70	34.8%	2,392	22,497.72	40,585.31
1970-71	26.1%	1,889	22,779.76	46,172.26
1971-72	20.7%	1,521	25,569.62	105,610.37
1972-73	18.7%	1,424	25,049.58	76,986.59
1973-74	18.1%	1,410	26,728.73	55,328.35
1974-75*	18.3%	1,510	24,355.29	50,683.68
1975-76	27.3%**	1,525	31,762.03	111,145.15
1976-77	22.2%*	1,315	\$32,766.37	\$83,082.70

\*Beginning in 1974-75, these gifts support the Alumni Chair of Higher Learning, by action of the Alumni Association. Restricted gifts are assigned to the donor's designated area. Both categories of gifts comprise the total Fund.

\*\*Based on the number of Alumni solicited for the Fund.

Methodist Church and governed by a self-perpetuating Board of Trustees. The College provides equality of opportunity; admission to, employment by, and promotion within the College is on the basis of merit and there is no discrimination on the basis of race, color, creed, religion, sex, or national origin.

## Current Funds

Revenues and Expenditures

Year ended May 31, 1977

### OPERATING INCOME

Student fees	\$2,071,337
Gifts, Grants, & other	776,526
Endowment	298,132
Auxiliary Enterprises	916,752

TOTAL INCOME \$4,062,747

### OPERATING EXPENSES

Education & General	2,477,617
Auxiliary Enterprises	909,238
Scholarships & Concessions	521,774
Improvements, Equipment & Special Repairs	154,118

TOTAL EXPENSES \$4,062,747

## Source Of Contributions

Alumni	\$ 83,082.70
Corporation, Business, and Industry gifts	102,675.18
Foundations	51,364.04
Friends (non-alumni)	270,018.81
Independent College Fund of North Carolina, Inc.	38,628.00
North Carolina Conference, UMC	16,370.51
Western NC Conference, UMC	<u>212,364.51</u>
Total	\$ 774,503.75*

### Number of Gifts

Alumni	1,315
Individuals	147
Corporations	128
Foundations	<u>34</u>
Total	1,624





*Dr. Patton*

*The President's Report*

## Meeting New Frontiers in 1976-77

1976-77 was a good year for High Point College. Enrollment continued stable at over 1,000; the College operated in the black and showed a small surplus at the end of the year; 205 seniors graduated with bachelor's degrees and a liberal arts education which we believe has equipped them to meet the challenges of the years ahead.

This annual issue of HIGHPOINTS marks the College's appreciation for all who helped make the year successful. Some of the significant events and facts of the year are noted here. More important, the listing of individual benefactors shows the vital and undergirding support of friends and alumni. Without this support, the College's year would have been vastly different. The generosity in dollars and the support in spirit received by the College in 1976-77 showed once more that the constituency of the College has confidence in its value. To each contributor and friend, we say "Thank you." The College looks confidently to the future because of this kind of generosity.

*Wendell M. Patton*

Wendell M. Patton, *President*

**H**igh Point College is a lot of things to a lot of people. While the primary work of the College takes place in the interchanges between faculty and students, the life of the College is seen in a wide variety of activities, functions, responsibilities, and end results. Taken all together, these form the life of the institution. A review of some of the events and circumstances of the year just past may be helpful in understanding why 1976-77 was a good year in the life of the College.

**The College is an academic institution.**

To furnish the traditional liberal arts experience to the students, the College offers a curriculum designed to educate the whole person. The liberal arts education, in contrast to a technical or vocational training school, is meant to prepare the whole person for competence and conscience in all of life's endeavors. The liberal arts intend to educate "for any eventuality," for any challenge, for any opportunity.

At the same time, the College is aware of the difficulties faced by graduates as they enter "the real world" in search of careers, employment, and compensation for their labors. To this end, every effort is made to relate the traditional liberal arts to contemporary needs and modern demands. The Student Career Intern Program is highly prominent as the College's effort to bridge the gap between the classroom and vocational experience. SCIP is a cooperative program between the College and local commercial, so-

cial, or governmental enterprises providing work experience. All of a student's academic skills from a liberal arts education are brought to bear on this temporary employment. With close supervision, the student is made an integral part of a business, industry, social service agency, or government office.

By the nature of the internship, a student is able to make well-informed decisions regarding future employment or further education. As new career opportunities become available, liberal arts graduates must be ready to assume leadership in any area; SCIP provides an opportunity for a student to test a preliminary decision about a career.

To meet broadening job opportunities as well as expressed needs for cultural enrichment, the College last year adopted new majors in accounting, communication, music, and music education. The accounting major will prepare graduates for managerial positions in both public and industrial accounting. Students will cover accounting, economics, business law, cost accounting, income tax accounting, auditing and additional courses.

The communications major was adopted in response to career-needs and interests of current and future students. The communications major is interdisciplinary, offering a combination of courses in written English, performing communications, and additional courses in business, sociology, and history. The program enables graduates to look to careers in jour-



nalism, theatre, television, radio, or advertising and related fields.

The two majors in music are largely reinstatements of programs previously offered at the College. Upon completion of these majors, students will be able to enter careers in music or pursue their studies in graduate school.

As an academic institution, the College looks with pride on the accomplishments of both faculty and students. Dr. James Stitt, assistant professor of history, won his Ph. D. degree from the University of South Carolina. He graduated from High Point College in 1967 and returned to the faculty in 1969.

Three chemistry students won awards for papers presented at the Collegiate Academy of the North Carolina Academy of Sciences meeting in April. David Friday, High Point, won first place; James M. Baunchalk, Wilmington, Delaware, won third place; and R. Wayne Kreeger, Pfafftown, won an honorable mention.

Dr. Ed Piacentino's article about Sinclair Lewis was published by the English Department of St. Cloud University, Minnesota. Dr. Richard Bennington won an award from Delta Pi Epsilon, honorary research society for his doctoral dissertation on family financial aspects of consumer education. The award is the first of its kind ever given at the University of Georgia.

William T. Guy, dean of students, won a fellowship from Memphis State University, Tennessee, to

complete his doctoral program. He is on leave and will return to the College next year.

Dr. James Elson, in addition to his college responsibilities, organized the High Point Chorale from community singers. Their first concert was given to an overflow audience in the Chas. E. Hayworth Sr. Memorial Chapel on a Sunday afternoon in April.

Dr. Allen Thacker, director of teacher education at the College, was appointed by the State Board of Education to serve on the N.C. Advisory Council on Teacher Education for a term ending in 1980.

Mr. A. Lynn Lockrow, instructor of drama, led an unusually large cast of students, alumni, and area residents through the long and dramatic production of "Inherit the Wind." The play, the story of the famed Scopes "monkey trial" in Dayton, Tennessee, in 1925, had good reviews from area critics.

The College brought several visitors to the campus to undergird the classroom experiences. Among them were Dr. Benjamin E. Mays, retired president of Morehouse College, Atlanta; authors James Dickey and Robert Creely; Dr. Robert E. Coles, one of the nation's leading child psychiatrists; and Keith Berger, America's outstanding performer of mime.

Dr. Stuart C. Henry, professor of American christianity at Duke University Divinity School, gave the annual Finch Lectures on March 28. At the same time, the College welcomed visiting United Methodist ministers from both Conferences in North Carolina in the annual expression of appreciation for their continued goodwill and support.

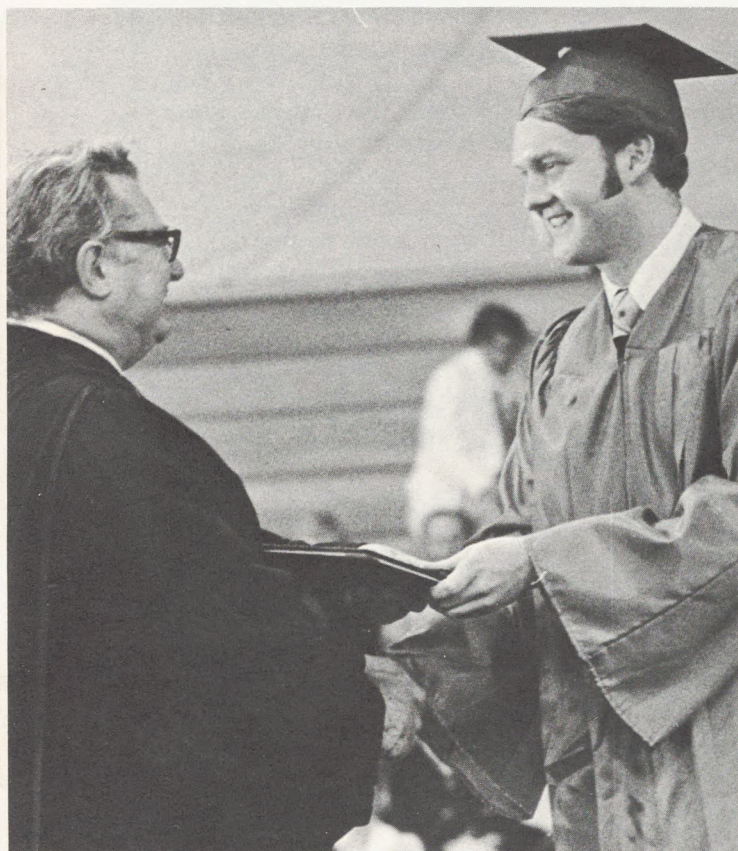
#### **The College is a developing institution.**

As a live organism, the College must grow, change, develop, move. Just as times change and present new challenges, so the College must find ways to keep on developing itself, to keep on meeting new frontiers. To shoulder this task with vigor and confidence, the College relies on a variety of resources. Chief among the resources are the friends of the College whose gifts show a matchless breadth.

The College operated under a record budget of \$3,318,000 which included more than \$1 million for classroom and laboratory instructional services. The tuition charge for each student covers approximately 85% of the actual cost of the instructional services. The remainder comes from gifts, grants, endowment income, and return on investments.

The College received \$774,503.75 in contributions for the year. The gifts came from alumni, friends, the Western North Carolina and the North Carolina Conferences of the United Methodist Church, the Independent College Fund of North Carolina, Inc., corporations, businesses, industries, and foundations. The College was able to remain sound and stable because of these gifts.

The Alumni Association exceeded the Annual Giving goal of \$77,000 by contributing a total of



\$82,082 for the Alumni Chair of Higher Learning and the continuing operation of the College.

Several gifts of considerable significance came to the College because benefactors were thoughtful and considerate of special needs.

The R.J. Reynolds Tobacco Company, Winston-Salem, gave a large truckload of laboratory equipment to the science departments. The equipment included a nuclear magnetic resonance spectrometer (NMR) and other sophisticated apparatus. The NMR spectrometer will allow students to have hands-on experience with equipment not usually available in a liberal arts college.

The estate of John D. Idol provided the College a bequest of more than \$215,000 which will be used to fund scholarships. When certain other provisions of his will are met, a proportionate share of the remainder of his estate will come to the College.

Mr. and Mrs. Foil V. and Ruth Charles of Greensboro established a scholarship fund with first preference being given to students in religion or Christian education. Mr. Charles is a member of the class of 1950 and has been a loyal and active alumnus.

The James Thomas and Mary Clegg Johnson Scholarship Fund was established through bequests made in the wills of Mr. and Mrs. Johnson, residents of Greensboro. The bequests were made for the specific purpose of giving financial assistance to any young man or woman who is not otherwise financially able to attend High Point College.

The Porter Brothers, Inc. Scholarship was established with a gift from the firm, located in Shelby, with first preference for the award to go to students majoring in Christian education.

The Frank H. Wood Scholarship for Athletics was established by the family of Frank H. Wood, Geo. T. Wood & Sons, Inc., and a bequest in the will of Mr. Wood. Frank H. Wood was an outstanding member of the baseball and basketball teams at the College in the late twenties and his interest and support of the College remained high throughout his lifetime. Awards from the Scholarship will be made to deserving athletes at the College.

One on-campus facility was improved by moving existing equipment. Hayworth Chapel now has a pipe organ, resurrected from disuse in the music room of Memorial Auditorium. Dr. James Elson, chairman of the fine arts department, encouraged the recovery of the small Moeller pipe organ and, with the support of Chaplain Robert Lowdermilk, III, secured the services of a professional musician and hobbyist who could move the organ. In a period when the Chapel was not being used, the organ was dismantled, moved, reassembled, and repaired. The organ is used regularly.

In a decision that is expected to have far-reaching influence on the future development of the College, the trustees authorized and organized the Board of Visitors. Sixty-five carefully chosen civic and business leaders were inaugurated to the Board in May. Officers



include Chairman D. Kermit Cloniger of Cloniger Buick-Olds Company, Thomasville; Vice President Irvin R. Black, vice president of the Alderman Company; and Secretary Michael B. Fleming, president of Fleming-Shaw Transfer & Storage Inc., Greensboro.

The Visitors took immediate steps to become fully acquainted with the College in order to give effective assistance and counsel to the Trustees. They will recommend ways of maintaining the College's strong financial position, help to determine its needs through long-range planning, and will be the College's ambassadors in the business and civic community.

Their participation is expected to give the College additional leadership, offer broad perspectives of support, and instill confidence in facing new challenges of the years ahead.

The Board is advisory in character. They will report their findings and observations to the Trustees who will continue to be responsible in every way for the life of the institution.

The Board of Trustees has taken another step to keep the College flexible and open to change. Trustees began work more than 18 months ago in revising the charter and by-laws of the College. The proposed revisions will be presented to the Trustees formally at their annual meeting. The revisions are designed to improve communications regarding the operation of the College, streamline organizational structure, and make the functioning of the College more responsive to changing needs. Chief architects of the changes have been trustees William Womble, chairman of the board, and Arthur Utley; both are attorneys.

#### **The College is a planning institution.**

High Point College is committed to a perpetual

existence. While the College makes no claim on predicting the future, plans must be made to meet the needs of the foreseeable future. These plans must be predicated on the belief that the College will continue functioning and serving for an indefinite but very long time.

To meet the needs that lie in the foreseeable future as well as the unpredictable times immediately ahead, the College must try to guarantee itself the resources that will be needed.

Chief among plans for the immediate future is the construction of new library facilities. This much-discussed and long-felt capital need received official sanction this year. The College needs new library facilities as an academic and comprehensive learning resource center. No need — or desire — of the College is so pressing or so obvious. Numerous actions were taken during the year by the Board of Trustees to see that well-made plans will turn into the reality of a modern facility.

The present library building is outmoded and beyond the point of adequately serving the needs of the College, its students and faculty. The trustees have appointed a committee to study the library needs and to make periodic reports. Faculty, staff, students, and librarians are working together to insure that much thought and expertise will go into the proposed learning center.

Leadership of the project has been assigned to capable hands. J. Harriss Covington, president of Harriss & Covington Hosiery Co., is chairman of the building and grounds committee of the trustees. Mr. Earle Dalbey, vice president — finance, is campus coordinator of the project. Dr. James Stitt is chairman

of the on-campus library committee.

No timetable has been set for groundbreaking; but, as always, the progress of the project will be influenced by the availability of funds. There is no doubt that the building project will be the subject of the College's next major capital campaign.

Gifts are already being received for the new library building project. Mrs. C.T. Latimer, longtime friend of the College, has given a large bas-relief woodcarving that will eventually be on display in the new library. The carving, nearly four feet square, shows General Robert E. Lee and General Thomas J. "Stonewall" Jackson on a Civil War battlefield.

Mrs. Annie Mae Powell, a friend of the College since its founding, established a trust fund last year as a memorial to her late husband, William T. Powell. The trust fund will provide a specially-designated section in the proposed new library construction as the locale for rare books.

#### **Finally, the College is a winning institution.**

The College's philosophy toward athletics is that the students on the various varsity teams are primarily members of an academic community; secondarily, they are competent in athletics and the College is proud to have them as representatives.

When the coaches and faculty members of the athletic department lead their teams in the kind of championship play which has characterized the year just past, we are doubly proud of our athletes and our own philosophy as well.

The College teams last year had 245 wins, 96 losses, and one tie. The Panthers won the Joby Hawn Cup from the Carolinas Conference for the second consecutive year. Teams won five championships in the nine conference sports, with titles in soccer, volleyball, women's basketball, baseball, and women's tennis. Three teams went to national tournaments with volleyball and women's basketball finishing ninth and seventh in the nation, respectively. Mens' tennis finished in a tie for 11th place.

Cross country won the District 26 title. Women's field hockey set a school record with 10 victories. Mens' basketball was defeated in the semi-finals of the conference tournament, losing to the eventual winner. Baseball and womens' tennis won conference crowns.

The year closed on notes of optimism:

- plans for the new library were moving forward;
- benefactors were continuing their generosity;
- enrollment for the fall appears to be satisfactory;

- attitudes among faculty, staff, students, and alumni were heartening and helpful;

- the College expects to remain financially sound and academically strong.

The College had a good year because of the cooperative spirit of many people. To those of you who were part of that spirit, the College owes much gratitude and indebtedness. ■

# Distinguished Gift Clubs

High Point College is pleased to honor individuals and organizations who make exemplary contributions to the Annual Fund of the College. To put them first in the Honor Roll of Contributors is indicative of their own quality of devotion and loyalty. The Fellows Club recognizes the ultimate leadership with gifts of \$1,000 or more. The Lamplighters Club is indicative of gifts of \$500 up to \$999. The Tower Club lists contributors of \$250 to \$499 and the Centurion Club members have each contributed \$100 to \$249. The College appreciates this opportunity to say "Thank you" to each contributor.

## The Fellows Club

### Alumni

Patricia Pressley Aylmer '73  
 Foil V Charles '50  
 George S Erath '52  
 Thomas S Haggai H'65  
 James R, III '49 & Eutha Spencer  
 Hix '49  
 Edward H H'66 & Annie Robbins  
 Mendenhall '32  
 Nido R Qubein '70  
 Robert B '38 & Nanabeth Null  
 Rankin '41  
 Dixie Thomas Snider '39  
 Dolli Wagner Ward '29  
 Gordon Yarborough '64  
 Young's Furniture & Rug Company Inc:  
 Lyles H Kearns '50  
 Hazel Welborn Young '36

### Friends of the College

Warren L Anderson  
 Carolina Container Co Inc  
 High Point Bank & Trust Company  
 Mrs French L McMillan  
 James H Millis  
 Perpetual Savings & Loan Association  
 Slane Hosiery Mills Inc  
 Herman H Smith  
 George T Wood & Sons Inc



## The Lamplighters Club

### Alumni

Jack J Bollinger '54  
 Allen P Brantley H'51  
 Robert F Dabbs '58  
 William D Jr '47 & Beverly Burton  
 Goldston '47  
 George P Highsmith '44  
 L B Holt '40  
 Stuart M Hoyt Jr '66  
 James F Payne '69  
 J Clyde '31 & Ruth Wood Pugh '41  
 Henry I '42 & Ruth May Ridenhour '42

### Friend of the College

Howard R Pancoast

## The Tower Club

### Alumni

Arthur R Bookout Jr '39  
 Betty Brady Campbell '45  
 Charles F Carroll H'52  
 Joseph F Coble '34  
 Charles C Edwards Jr '46  
 David L '55 & Betty Lord  
 Francis '57  
 Lois Hedgecock Gay '36  
 C L Gray '33  
 Eloise Best Hawk '32  
 E Gene Kirby '57  
 Bill L Minor '50  
 David O Moore '56  
 Bob L '53 & Jo Bundy Parrish '53  
 L B Pope '48  
 J Wilson Rogers '37  
 Carl M '33 & Anzelette Prevost  
 Smith '32  
 Barbara Tobias Swartzberg '52\*  
 C L Weisner '63

\*Deceased

# The Centurion Club

## Alumni

- David M Abernathy '55  
 Frances Hunter Adams '55  
 Terry R Alexander Jr '59  
 Gilbert L Arthur '49  
 Edwin L Auman '51  
 James A Auman '45  
 Richard R Axley '50  
 Walter S Baker Jr '57  
 James C Berrier '54  
 Kenneth G Berrier '51  
 Harriett E Berry '42  
 Roy R Bevan '55  
 William E Bost '56  
 James F Brewer '49  
 Willis L Brown '50  
 Gerald A Bryant '63  
 Richard P Budd '63  
 Jodie L Bull Jr '50  
 Billy L Bumgarner '50  
 John F Cagle '40  
 Gilbert S '49 & Billie Welch  
 Callahan '48  
 Kenneth A '58 & Betty Hedgecock  
 Campbell '53  
 Barbara M Carroll '47  
 G Carlton '50 & Lamarie McArthur  
 Clinard '50  
 D Kermit '36 & Edith Crowder  
 Cloniger '36  
 Herman E '27 & Lelia Wagoner  
 Coble '28  
 Ruth Guyer Coble '42  
 Janice Jenkins Corbus '39  
 Jerome E Counihan '42  
 Helen Dameron Coward '38  
 Grace Barnette Cox '30  
 Floyd T Craven '59  
 James L Cresimore '49  
 John H Crowell '50  
 Wayne C Curry '64  
 Frank D '59 & Marjorie Payne  
 Daniels '46  
 Louise Cole Dark '40  
 Charles D Davis '59  
 Jackson D Dobbins '57  
 Glenn Wright Draper H'76  
 Donald M Dwiggin '64  
 Albert G Earle '41  
 Margaret Perry Ellington '27  
 William G '52 & Stella Redding  
 Ervin '51  
 William S Fagg III '70  
 A Mitchell Faulkner H'71  
 Michael B Fleming '49  
 Robert A Fleming Jr '49  
 James A Fowler Jr '53  
 Charles J Fulp '58  
 Unity Nash Funderburk '33  
 J E '37 & Virginia Massey  
 Garlington '35  
 Robert S Gayle '46  
 Occo D Gibbs '38  
 Robert B Glisson '51  
 G Leon Green '51  
 Travis F Hanes '54  
 Melton E Harbin '45  
 A Blanco Harrell '30  
 Ellen Teague Hartman '70  
 Juanita Hayworth Hatcher '36  
 William B Hatcher '41  
 Porter A '39 & Wilma Sink  
 Hauser '41  
 William R Henderson '43  
 T R '58 & Louise Foster  
 Hendrix '65  
 Doris Price Hill '72  
 C Reginald Hinshaw Jr '40  
 George W Holmes III '39  
 Joseph W Holmes '28  
 David H Holt '55  
 H C Hudgins Jr '54  
 A Ray Hughes '57  
 Fred C Hughes '69  
 Clarence '50 & Wanda Trogdon  
 Ilderton '49  
 Millard G Isley '36  
 Sylvia Bobo Jenkins '57  
 Charles R '60 & Kathryn  
 Traywick Johnson '60  
 Harvey B '53 & Willie Davis  
 Johnson '53  
 Dell Conrad Johnson '61  
 Numa C Johnson Jr '41  
 James T Jones '39  
 W Arthur Kale H'51  
 Whitman C Kearns '38  
 Clarence C Keever '46  
 Reuche Chadwick Kimrey '32  
 Eileen McIlvaine Koerner '60  
 Robert D Kornegay '64  
 L Winfred '42 & Cleo Pinnix  
 Lamar '41  
 Theresa Hartman Langley '75  
 Mildred Johnston Lea '36  
 Kathryn Allen Leach '43  
 Winfred E '63 & Gail Raines  
 Lindley '66  
 Robert E Lowder '53  
 J C McAllister Jr '49  
 Dorothy Hoots McCollum '56  
 Irene Chadwick McFarland '35  
 Lloyd Daryl McGuire '61  
 John J McKeithen '40  
 Helen Bates McKinney '39  
 J Clay Madison '32  
 Orren R Mason '49  
 John M Matthews '50  
 Larry K Matthews '67  
 W Joseph May '41  
 C Douglas Mayes '50  
 Luther R Medlin '30  
 Robert R Merhige Jr '42  
 Henry H Miner '43  
 Harold M '66 & Mary Lou  
 Troutman Moose '64  
 Vernon A '31 & Jennie Floyd  
 Morton '33  
 Carolyn Nifong Motsinger '42  
 Frank M Niernsee '38  
 Iris Welch Norman '37  
 D Paul Oakley '37  
 Murphy M '58 & Janice Solomon  
 Osborne '59  
 Paul S Owen '37  
 Duffy L Paul '56  
 Thomas Roger Pike '64  
 Jeanne Rankin Pleasants '41  
 Hilda Brandon Poindexter '50  
 Eugene E '45 & Virginia Cohen  
 Pomplitz '45  
 Shirley Yokely Rawley '59  
 Paul A Reid H'56  
 Ray J Richards '38  
 Jack R '52 & Barbara Atkins  
 Ridge '52  
 George W '50 & Ruth Lewis  
 Rudisill '48  
 Leon Safrit '58  
 M Milton Schwartz '32  
 Nancy Watson Shelton '56  
 Lee W '37 & Julia Coe  
 Sherrill '37  
 Richard A Short '40  
 Edwin '58 & Elizabeth Wood  
 Shufelt '42  
 George Maurice Smith '58  
 Sidney A Smith '35  
 Martha Idol Stevenson '40  
 James W Stitt '67  
 W D Stockard '34  
 Eugene F Street '63  
 W Sid Tayloe Jr '52  
 Charles P '68 & Daune Ward  
 Teague '71  
 J Allen Thacker '39  
 George W '50 & Jo Ann Wyatt  
 Thompson '50  
 Billy R Tucker '60  
 William Edgar Turner '51  
 Philip T Wall '50  
 Wyatt Wall '35  
 Garland E Wampler '52  
 John E '63 & Louella Richards  
 Ward '64  
 George C Welch Jr '62  
 Wilson O Weldon H'52  
 Murray M White Jr '51  
 Harley M Williams '42  
 Robert E Williams '59  
 J Garland Winkler H'65  
 Hoyt H Wood '36  
 Eleanor C Young '32  
 C Virgil Yow '30  
 Hal D Yow '40

## Friend of the College

Lloyd O Hughes

# Report of Class Gifts to The Annual Alumni Fund

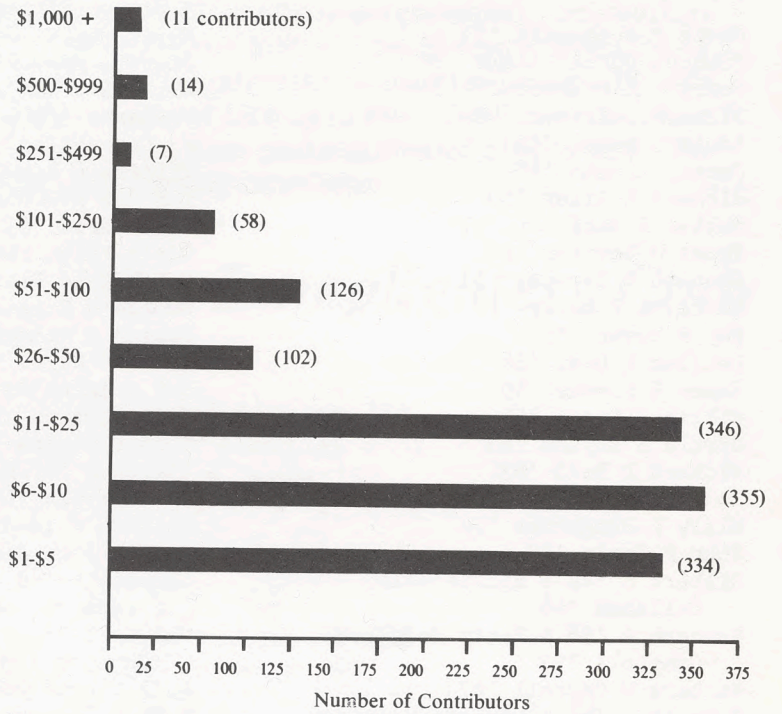
CLASS	SIZE	NUMBER SOLICITED	1976-77 PARTICIPATION *	1976-77 AMOUNT
1927	12	12	12 = 100%	\$ 239.52
1928	37	22	19 = 86%	1,413.64
1929	48	35	18 = 51%	5,247.50
TOTAL	97	69	49 = 75%	6,900.66
1930	44	30	15 = 50%	573.90
1931	39	27	15 = 55%	585.00
1932	43	26	17 = 65%	1,506.88
1933	45	27	17 = 63%	880.20
1934	39	29	12 = 41%	542.50
1935	43	31	12 = 38%	605.90
1936	42	24	20 = 83%	2,354.16
1937	73	48	22 = 45%	1,754.00
1938	59	40	16 = 40%	1,877.35
1939	96	62	23 = 37%	\$ 5,980.00
TOTAL	523	344	169 = 49%	16,659.89
1940	92	56	27 = 48%	1,468.00
1941	106	57	35 = 61%	3,488.50
1942	100	63	34 = 54%	1,854.50
1943	87	66	20 = 30%	573.45
1944	74	49	17 = 34%	808.12
1945	70	50	15 = 30%	848.12
1946	57	38	8 = 21%	705.00
1947	83	57	14 = 24%	767.15
1948	140	92	19 = 21%	655.50
1949	260	171	44 = 25%	2,254.60
TOTAL	1,069	699	233 = 33%	\$13,422.94
1950	191	123	39 = 31%	4,781.20
1951	208	137	31 = 22%	1,208.70
1952	178	131	31 = 23%	2,065.00
1953	163	102	31 = 30%	1,190.79
1954	165	111	19 = 17%	1,450.50
1955	168	101	24 = 23%	812.63
1956	191	131	31 = 23%	1,160.00
1957	231	148	28 = 18%	1,109.47
1958	239	176	28 = 15%	1,565.12
1959	231	160	47 = 29%	1,201.92
TOTAL	1,965	1,320	309 = 23%	\$16,545.33
1960	229	163	37 = 22%	713.30
1961	220	160	38 = 23%	754.50
1962	240	176	29 = 16%	512.50
1963	242	170	48 = 28%	1,267.50
1964	199	170	31 = 18%	1,837.48
1965	247	151	27 = 17%	340.62
1966	247	219	26 = 11%	924.50
1967	201	186	22 = 11%	526.06
1968	231	215	29 = 13%	362.82
1969	310	275	47 = 17%	1,103.04
TOTAL	2,366	1,885	334 = 17%	\$ 8,342.32
1970	298	265	32 = 12%	4,687.00
1971	248	231	19 = 8%	226.54
1972	256	235	23 = 9%	445.41
1973	249	236	23 = 9%	1,409.40
1974	243	221	13 = 5%	161.23
1975	225	212	42 = 19%	440.00
1976	224	196	14 = 7%	100.85
TOTAL	1,743	1,596	166 = 10%	\$ 7,470.43
Honorary Degrees			21 = 34%	\$12,571.13
Miscellaneous			34	1,170.00
TOTAL	7,763	5,913	1,315 = 22%	\$83,082.70

\*Based on number of Alumni solicited for Annual Alumni Fund

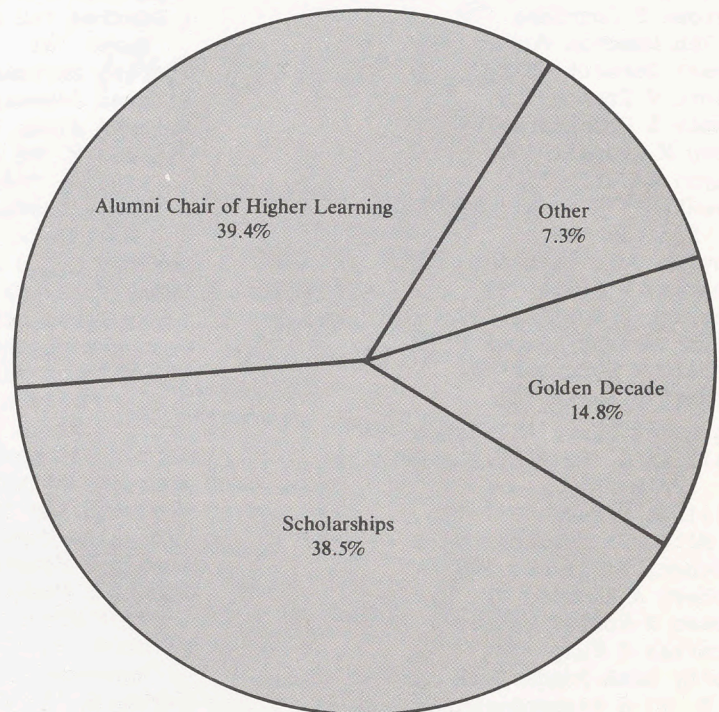
Gift tip: Administrative offices may be endowed.

Gift tip: Add a codicil to your will or estate plan to accomplish your gift objective.

## How The Fund Was Contributed



## How The Fund Was Used







# Contributors to High Point College

## Alumni

### Class of 1927



Class Chairman:  
Herman E Coble Sr  
Number in Class: 12  
Class Participation:  
12 (100 per cent)  
Gifts: \$239.52

Pomona Johnson Amick (E)  
Ethel Blackwelder Broome (E)  
Herman E Coble Sr (E)  
Margaret Perry Ellington (E)  
May Frazier Ferree (E)  
Emma Whitaker Hoskins (E)  
O C Loy (E)  
William M Loy (E)  
Callie Isley Smith (E)  
Jewel Hughes Stokes (E)  
Jean Williams Strouse (E)  
Mabel Balch Thomas (E)

### Class of 1928



Class Chairman:  
Joseph W Holmes  
Number in Class: 37  
Class Participation:  
19 (86.4 per cent)  
Gifts: \$1,413.64

J Elwood Carroll (E)  
Mary Lelia Wagoner Coble (E)  
Mary Lois Coble (E)  
Lillie Mae Braxton Dean (E)  
Alma Lambeth Dorsett (E)  
Annie Livengood Hartsell (E)  
Joseph W Holmes (E)  
Canary Johnson Kearns  
Lewis C Kress (E)  
Helen Hayes Lewis (E)  
Dora Pearson Madison (E)  
T Glenn Madison (E)\*  
Erfie Keck Nelson (E)  
Ruby Isley Parker (E)  
Susie Myers Perdue (E)  
Jacob Robinowitz (E)  
Laura Thompson Russell (E)  
Paul Swanson  
Ralph H Vance (E)  
Frank Wood (Estate)

\*Deceased

### Class of 1929



Class Chairman:  
Marjorie B Welborn  
Number in Class: 48  
Class Participation:  
18 (51.4 per cent)  
Gifts: \$5,247.50

M Louise Adams (E)  
Pauline Whitaker Bielitz  
Jabus Walter Braxton (E)  
Willie Fritz Brinkley (E)  
Juanita Amick Burgess (E)  
Blanche Ingram Fulp (E)  
Dorothy V Hoskins (E)  
Samuel Hyman  
Alta Allen Kever (E)  
Bessie Butler King (E)  
Alice Freeze Poole (E)  
Graydon L Ring (E)  
Mary Clark Schneider (E)  
J Marshall Swanson (E)  
Inez Reynolds Vance (E)  
Dolli Wagner Ward (E)  
Marjorie B Welborn (E)  
Mamie York Wirsching (E)

### Class of 1930



Class Chairman:  
Talton J Whitehead  
Number in Class: 44  
Class Participation:  
15 (50.0 per cent)  
Gifts: \$573.90

Rosalie Andrews (E)  
Jesse R Blair (E)  
Grace Barnette Cox (E)  
Eliza Lomax Cridlebaugh (E)  
Thomas P Cridlebaugh (E)  
A Burke Furches (E)  
A Blanco Harrell (E)  
Kathleen Teague Hedrick (E)  
Kenneth G Holt (E)  
Luther R Medlin  
Lucy Nunnery Payne (E)  
Huldah Dixon Walston (E)  
J Taft White (E)  
Talton J Whitehead (E)  
C Virgil Yow (E)

### Class of 1931

Class Chairman:  
Hart B Campbell  
Number in Class: 39  
Class Participation:  
15 (55.6 per cent)  
Gifts: \$585.00

Lucille Browne (E)  
Hart B Campbell (E)  
Charlene Grimes Carter (E)  
Aubrey W Dunbar (E)  
John C Easter  
Louise Collett Easter  
Emma Lee Poole Furches (E)  
Althea Presnell Lewis (E)  
Margaret Thompson McMillan (E)  
Vernon A Morton (E)  
Katherine Murr Nibbelink (E)  
J Clyde Pugh (E)  
Ruby Warlick Putnam (E)  
Chester C Smith (E)  
Clara Goolsby Teague (E)

### Class of 1932



Class Chairman:  
Eleanor C Young  
Number in Class: 43

Class Participation:  
17 (65.4 per cent)  
Gifts: \$1,506.88

Dessie Lea Little Braxton (E)  
Truth Isley Coon  
Betsy Durland Davis (E)  
Sue Morgan Denny (E)  
Zeb R Denny (E)  
Eloise Best Hawk (E)  
Vernon W Idol Jr (E)  
G Fielding Kearns (E)  
Reuche Chadwick Kimrey (E)  
J Clay Madison (E)  
Annie Robbins Mendenhall (E)  
Mildred Massey Moran (E)  
Frances Pritchett  
Gladys Guthrie Pugh (E)  
M Milton Schwartz (E)  
Anzelette Prevost Smith (E)  
Eleanor C Young (E)

### Class of 1933



Class Chairman:  
Unity Nash Funderburk  
Number in Class: 45  
Class Participation:  
17 (63.0 per cent)  
Gifts: \$880.20

Edna Walker Bingham  
Irene Seward Brooks  
Irma Paschall Crenshaw  
Elva Cartner Davis (E)  
Unity Nash Funderburk (E)  
C L Gray (E)  
Elizabeth Gurley (E)  
W M Howard Jr (E)  
W Ralph Jacks (E)  
E Doris Keener (E)  
Wilton H Kimmer (E)  
James O Knight  
Clarence P Morris (E)  
Jennie Floyd Morton (E)  
D Moody Nifong (E)  
Carl M Smith (E)  
Martha Starling Smith (E)

### Class of 1934

Class Chairman:  
Joseph F Coble  
Number in Class: 39  
Class Participation:  
12 (41.4 per cent)  
Gifts: \$542.50

John W Austin (E)

W Darrell Bulla (E)  
Joseph F Coble (E)  
Ivan D Crissman (E)  
Frances Taylor Davis  
Jewell Welch Deans (E)  
John Thomas Ellis (E)  
Madelyn Packer Kearns (E)  
William E Price Sr (E)  
Ola A Stafford (E)  
W D Stockard (E)  
Ethel Faw Tesh (E)

### Class of 1935



Class Chairman:  
Aubert M Smith  
Number in Class: 43  
Class Participation:  
12 (38.7 per cent)  
Gifts: \$605.90

James R Bowers (E)  
Mae Hayes Bulla (E)  
Robert M Byrum (E)  
John A Eshelman Jr (E)  
Virginia Massey Garlington  
James H Hight (E)  
Irene Chadwick McFarland  
Aubert M Smith (E)  
Sidney A Smith (E)  
Lucy Ross Taylor (E)  
J Paul VonCannon (E)  
Wyatt W Wall

### Class of 1936



Class Chairman:  
Millard G Isley  
Number in Class: 42  
Class Participation:  
20 (83.3 per cent)  
Gifts: \$2,354.16

Nell Brower (E)  
D Kermit Cloniger  
Edith Crowder Cloniger  
George B Elder (E)  
Daphne Swiggett Fansler (E)  
A Lincoln Faulk  
Lois Hedgecock Gay (E)  
Juanita Hayworth Hatcher (E)

### The Encore Club

ALUMNI who have contributed to the College for at least two consecutive years are members of the Encore Club. They are designated with an (E).



Lillian Varner Houck (E)  
 Millard G Isley (E)  
 Mildred Johnston Lea (E)  
 Robert E Lee Moser (E)  
 J L Pittard  
 Frances Lambeth Reynolds (E)  
 Thomas C Teague (E)  
 Ruth Clark Wallace  
 Leonard M White (E)  
 Hoyt H Wood (E)  
 Hazel Welborn Young (E)  
 James W Younts (E)

### Class of 1937

Class Chairman:  
 Mary-Margaret Bates Brown  
 Number in Class: 73  
 Class Participation:  
 22 (45.8 per cent)  
 Gifts: \$1,754.00

Frances Lindsay Austin (E)  
 J Allen Austin (E)  
 R Odell Brown (E)  
 Mary-Margaret Bates Brown (E)  
 Paul J Bulla (E)  
 Margaret Stout Byrum (E)  
 James W Furr  
 J E Garlington  
 Rosa Mae Ingram  
 Mary Frances Warlick Lattimore  
 Lucy Fuller Martin (E)  
 Samuel W Myers (E)  
 Iris Welch Norman  
 D Paul Oakley (E)  
 Agnes Willcox Owen (E)  
 Paul S Owen (E)  
 Edward J Phibbs Jr (E)  
 Elizabeth Pirtle Phibbs (E)  
 Margaret Smith Pittard  
 Herbert T Ragan (E)  
 J Willson Rogers (E)  
 William W Weisner

### Class of 1938



Class Chairman:  
 Robert B Rankin  
 Number in Class: 59  
 Class Participation:  
 16 (40.0 per cent)  
 Gifts: \$1,877.35

Frances Jones Bass (E)  
 Mary Frances Gerringer Boyles (E)  
 Helen Dameron Coward (E)  
 Kathleen Hepinstall Dunning  
 Occo D Gibbs (E)  
 George T Gunter (E)  
 William C Harrell (E)  
 Hildreth Gabriel Jordan  
 Whitman C Kearns (E)  
 James R Mattocks  
 Bernardine Hurley Newell  
 Frank M Niernsee (E)  
 Allen J Parker  
 Clayton Oakes Peacock (E)  
 Robert B Rankin (E)  
 Ray J Richards (E)

### Class of 1939



Class Chairman:  
 J Allen Thacker  
 Number in Class: 96  
 Class Participation:  
 23 (37.1 per cent)  
 Gifts: \$5,980.00

Nancy M Barnette  
 Arthur R Bookout Jr (E)  
 J Vaughn Boone (E)  
 Helen Hunter Brodie (E)  
 Ruby Keller Case  
 Janice Jenkins Corbus (E)  
 Dorothy Wiggins Ellis (E)  
 Marguerite DeYoe Fiddner (E)  
 Lois Chidester Furr  
 E Paul Hamilton (E)  
 Porter A Hauser (E)  
 George W Holmes III (E)  
 Lucille B Ingram (E)

James T Jones (E)  
 Cleo Hardee Kana (E)  
 Austin C Lovelace (E)  
 Helen Bates McKinney  
 Nancy Parham Phillips (E)  
 Elizabeth Hoffman Ragan (E)  
 Dixie Thomas Snider (E)  
 J Allen Thacker (E)  
 Charles D White  
 Margaret Austin Yarborough (E)

### Class of 1940



Class Chairman:  
 Beverly E Bond  
 Number in Class: 92  
 Class Participation:  
 27 (48.2 per cent)  
 Gifts: \$1,468.00

Beverly E Bond (E)  
 John F Cagle (E)  
 Verta Idol Coe (E)  
 Louise Cole Dark (E)  
 Cecelia Isaac Eisenberg  
 Esther Miran Franklin (E)  
 Dorothy Linville Gray (E)  
 Joe H Gray (E)  
 C Reginald Hinshaw Jr (E)  
 L B Holt (E)  
 Mary Carraway Johnson (E)  
 Pauline Palmer Lovelace (E)  
 John J McKeithen (E)  
 Edith Vance Mattocks  
 J V Morgan (E)  
 Olive Hutchins Myers (E)  
 Helen Davis Purvis  
 Richard A Short (E)  
 Martha Idol Stevenson (E)  
 Evelyn Fraser Stirewalt  
 Ruth Myers Surratt (E)  
 Jesse L Swinson (E)  
 Ruth Futrelle Thompson (E)  
 Josephine Gibson Tipton (E)  
 Foy A Warford (E)  
 Anna Tesh Youngblood  
 Hal D Yow (E)

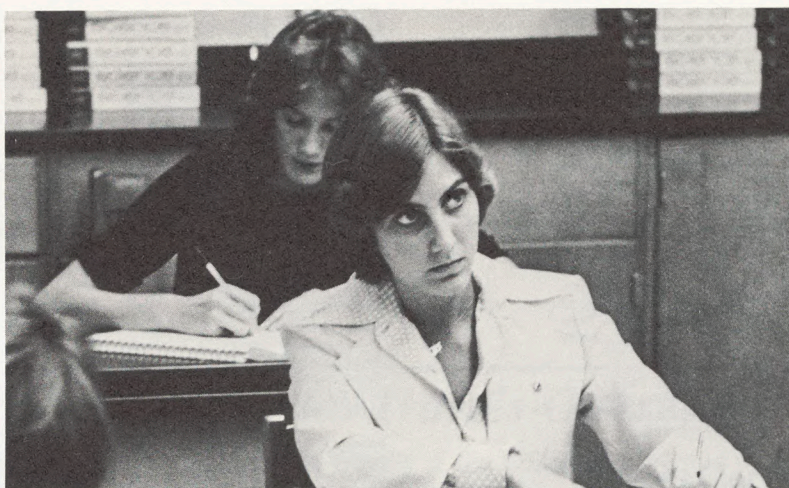
### Class of 1941



Class Chairman:  
 Albert G Earle  
 Number in Class: 106  
 Class Participation:  
 35 (61.4 per cent)  
 Gifts: \$3,488.50

Ruth Murphy Black (E)  
 Orpha A Burgess  
 Jane Austin Burris (E)  
 R Delbert Byrum (E)  
 Betty Sechrest Clontz (E)  
 Charles A Cochrane (E)  
 Celeste Payne Corum (E)  
 Albert G Earle (E)  
 Garland C Ellis (E)\*  
 Leonard Faust  
 David H Giles (E)  
 Catherine Phillips Hamilton (E)  
 William B Hatcher (E)  
 Wilma Sink Hauser (E)  
 Ralph B Hight (E)  
 Anonymous  
 Harold Jensen (E)  
 Ruth McKenzie Jensen (E)  
 Numa C Johnson Jr  
 M J Kivett Jr (E)  
 C Burke Koontz (E)  
 Lucy Neal Thayer Koontz (E)  
 Cleo Pinnix Lamar (E)  
 Jack D Lee (E)  
 W Joseph May (E)  
 Gertrude Bingham Maynard (E)  
 Lucille Craven Myers (E)  
 Jeanne Rankin Pleasants (E)  
 Ruth Wood Pugh (E)  
 Nanabeth Null Rankin (E)  
 Morton Samet  
 Elinor Grimes Senter (E)  
 Byrdelle Nicholas Sworin (E)  
 Doris Holmes Webb  
 Willie D Welborn (E)

\*Deceased



### Class of 1942



Class Chairman:  
 Geraldine Rash White  
 Number in Class: 100  
 Class Participation:  
 34 (54.0 per cent)  
 Gifts: \$1,854.50

W Darrell Allred (E)  
 Robert M Andrews (E)  
 Iris Thacker Beck (E)  
 Harriett E Berry (E)  
 Ben F Bulla (E)  
 Sarah Lou Gerringer Byrd (E)  
 Ruth Guyer Coble  
 Jerome E Counihan (E)  
 Grace Bivins Ffrench (E)  
 Ethel Hinshaw Fields (E)  
 William R Frazier (E)  
 Ruth Good (E)  
 John M Hamm (E)  
 Willie Edwards Hauser (E)  
 L Winfred Lamar (E)  
 Ralph O Lanier (E)  
 Fred E Lewis (E)  
 Lucy L Lovett  
 John A Lowder (E)  
 James H McCall  
 Mary Gold McMichael (E)  
 Robert R Merhige Jr (E)  
 Carolyn Nifong Motsinger (E)  
 Virginia Hunt Pleasants  
 Jack T Pugh Jr (E)  
 Henry I Ridenhour (E)  
 Ruth May Ridenhour (E)  
 Theodore W Schumacher (E)  
 James O Scotten Jr (E)  
 Clayton S Sechler (E)  
 Elizabeth Wood Shufelt (E)  
 Geraldine Rash White (E)  
 Gladys Brooks White  
 Harley M Williams (E)

### Class of 1943

Class Chairman:  
 LeRoy Foster  
 Number in Class: 87  
 Class Participation:  
 20 (30.3 per cent)  
 Gifts: \$573.45

Nina Whitaker Beavans  
 Arnel Setzer Bowling  
 LeRoy Foster (E)  
 Jean Davis Harrison (E)  
 Harry L Hauser (E)  
 Joseph Helmrich (E)

William R Henderson  
 Alvin W Horn (E)  
 Kathryn Allen Leach (E)  
 Helen Scott McCall  
 Henry H Miner  
 Joseph P Peters  
 Kathleen Howard Powell (E)  
 A Daniel Sides (E)  
 Louis R Soscia  
 Earline Loftin Spencer  
 J Ross Spencer Jr  
 Robert L Truesdell  
 Martha Mickey Walker (E)  
 Josephine Deal York

### Class of 1944

Class Chairman:  
 Willis F Gupton  
 Number in Class: 74  
 Class Participation:  
 17 (34.7 per cent)  
 Gifts: \$808.12

Ella Cox Bielzina (E)  
 J K Bostick (E)  
 Maude S Carraway (E)  
 Clyde L Collins (E)  
 Jessie McNeill Crutchfield  
 Frances Clinard Davis (E)  
 Nancy Watson Day (E)  
 Lillie Mae Moore Eldridge  
 Willis F Gupton (E)  
 George Perry Highsmith (E)  
 Joseph S Johnson  
 Ailene Kirkman Johnson (E)  
 Helen Meredith Jones  
 Norwood L Jones  
 Jack F Minnis Jr (E)  
 Ethel V Norton (E)  
 Dorothy Usher Whitledge (E)

### Class of 1945

Class Chairman:  
 Ava-Neil Taylor Collins  
 Number in Class: 70  
 Class Participation:  
 15 (30.0 per cent)  
 Gifts: \$848.12

James A Auman (E)  
 Betty Brady Campbell (E)  
 Ava-Neil Taylor Collins (E)  
 Jeanne Graff Garcia (E)  
 Marguerite Koontz Gupton (E)  
 Melton E Harbin (E)  
 Jessie Myers Hepler (E)  
 Nancy Clayton Meeks (E)  
 Ruth Hull Plyler (E)  
 Eugene E Pomplitz (E)  
 Virginia Cohen Pomplitz (E)  
 Frances Smith Schumacher (E)  
 Estelle Smith Seldon  
 Wanona Rash VanHoy  
 Betty Marie Welch

Gift tip: Endow student field trips for historic, scientific, or cultural purposes.

Gift tip: Remember a beloved teacher, minister, or other counselor through an endowment fund.

Mary Louise Chapman James  
 Arnold T Lawson (E)  
 Linda Briggs Loflin (E)  
 Max G Loflin (E)  
 Thomas E Loftis (E)  
 Aaron W Moss (E)  
 Carole Imvold McRacken (E)  
 Gordon D Nifong (E)  
 Leola Wallin Norton (E)  
 Janice Solomon Osborne (E)  
 Kenneth W Parker  
 Carolyn Koontz Pentz (E)  
 Ramona Leonard Phelps (E)  
 M Annette Price (E)  
 Shirley Yokley Rawley (E)  
 John K Roberts (E)  
 Bob F Scott  
 Charles W Sisk (E)  
 Carole Overby Stein (E)  
 Robert B Taylor (E)  
 Charles S Vaughn (E)  
 Wayne Veach  
 Martha Dickens Wade  
 Charles L Watson (E)  
 Robert E Williams (E)  
 Sylvia Hall Wright

### Class of 1946

Class Chairman:  
 Raymond A Warlick Jr  
 Number in Class: 57  
 Class Participation:  
 8 (21.1 per cent)  
 Gifts: \$705.00

Marjorie Payne Daniels (E)  
 Charles C Edwards Jr (E)  
 Robert S Gayle (E)  
 Henrietta Bundy Harris (E)  
 Clarence C Keever (E)  
 Maxine Aldridge Marshall  
 N L Oliver  
 Raymond A Warlick Jr (E)

### Class of 1947



Class Chairman:  
 Joel E Williams  
 Number in Class: 83  
 Class Participation:  
 14 (24.6 per cent)  
 Gifts: \$767.15

John C Adcock  
 Wincie Cagle Bowman (E)  
 Blanche Myers Bryant (E)  
 Barbara M Carroll  
 Ethylene Ragsdale Charnock (E)  
 Jewel Myers Cress (E)  
 Beverly Burton Goldston (E)  
 William D Goldston Jr (E)  
 Bill H Leatherman (E)  
 Martha Davis Modlin (E)  
 Anna Ferguson Sprye (E)  
 Samuel W Taylor  
 James E Whitchard  
 Joel E Williams (E)

### Class of 1948



Class Chairman:  
 Thomas H Elder Jr  
 Number in Class: 140  
 Class Participation:  
 19 (21.7 per cent)  
 Gifts: \$655.50

C G Alspaugh Jr  
 Esther Dyer Bowles (E)  
 Charlotte Churchill Brown (E)  
 James C Brown (E)  
 Billie Welch Callahan (E)  
 J Harley Cecil (E)  
 Janet Russell Clark (E)  
 Robert N Eagle (E)  
 Thomas H Elder Jr (E)  
 Dorothy Johnson Lane  
 Lynn Williard McInnis (E)  
 Cranford O Plyler Jr (E)  
 L B Pope (E)  
 J Earl Richardson (E)  
 Ruth Lewis Rudisill (E)

William A Stuart  
 Robert G Vaughn  
 Dorothy Davis Taylor (E)  
 William A Welch

### Class of 1949



Class Chairman:  
 James F Brewer  
 Number in Class: 260  
 Class Participation:  
 44 (25.1 per cent)  
 Gifts: \$2,254.60

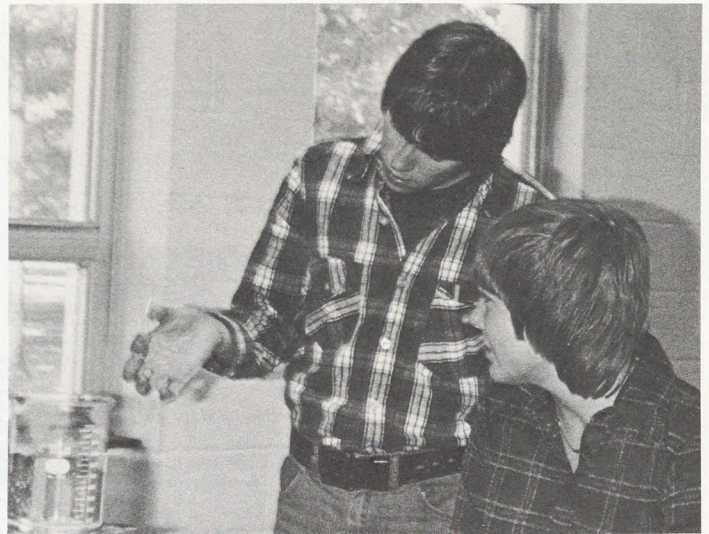
Robert S Allred (E)  
 Gilbert L Arthur (E)  
 Robert J Ashmore  
 Ovida Lineberger Barber (E)  
 Howard H Bishop (E)  
 Nancy Ridge Bishop (E)  
 Frances Jackson Boone (E)  
 Billy L Boyles (E)  
 James F Brewer (E)  
 Gilbert S Callahan (E)  
 Jack W Charles (E)  
 James L Coble (E)  
 James L Cresimore  
 Robert F Cress (E)  
 William E Fitzgerald (E)  
 Michael B Fleming (E)  
 Robert A Fleming Jr (E)  
 Carl C Garrett (E)  
 William B Garrison (E)  
 Eutha Spencer Hix (E)  
 J Richard Hix III (E)  
 Wanda Trogdon Ilderton (E)  
 Lena Thornton Jackson (E)  
 Frances Weaver Jordan (E)  
 R Harry Jordan (E)  
 Lester D Lane  
 J C McAllister Jr (E)  
 E Thad McInnis (E)  
 Orren R Mason  
 A Jack May Jr  
 Max L Meeks (E)  
 John S Oakley (E)  
 Robert D Reed (E)  
 Charles K Saunders (E)  
 Arthur H Sheek (E)  
 Jane Lewis Slade (E)  
 Joseph P Slade (E)  
 Gurney L Stroud Jr (E)  
 Mary Whitely Summer (E)  
 Guy T Swain (E)  
 Myrtle E Tuttle (E)  
 Marjorie Roberts Whitchard  
 Paul C Williamson  
 Brandon B York

### Class of 1950



Class Chairman:  
 George W Thompson  
 Number in Class: 191  
 Class Participation:  
 39 (31.7 per cent)  
 Gifts: \$4,781.20

Richard R Axley (E)  
 Ann Stuart Boyles (E)  
 Willis L Brown (E)  
 Jodie L Bull Jr (E)  
 Billy L Bumgarner  
 Paul J Carter (E)  
 Foil V Charles (E)  
 Bill L Cheves  
 Wiley G Clary Jr (E)  
 G Carlton Clinard (E)  
 Lmarie McArthur Clinard (E)  
 Herman E Coble Jr (E)  
 John H Crowell (E)  
 Kenneth L Dehaven (E)  
 Lonnie E Gailles  
 M Kirk Hinshaw  
 Clarence M Ilderton (E)  
 Lyles H Kearns (E)  
 William F Kemp (E)  
 Lawson L Lowder (E)  
 Bertha Lowe McGee  
 Robert J Marley (E)  
 John M Matthews (E)  
 C Douglas Mayes (E)  
 Bill L Minor (E)



A Lloyd Pardue  
 Hilda Brandon Poindexter  
 George W Rudisill (E)  
 T Haynes Scott Jr (E)  
 Laymon W Sprye (E)  
 George W Thompson (E)  
 Jo Ann Wyatt Thompson (E)  
 Wilburn P Thornton  
 Wallace T Trent  
 Joseph R Veasey  
 Philip T Wall (E)  
 David L Wilson  
 Anita W Withers  
 C Fletcher Womble Jr (E)

### Class of 1951

Class Chairman:  
 Murray M White Jr  
 Number in Class: 208  
 Class Participation:  
 31 (22.6 per cent)  
 Gifts: \$1,208.70

Jeanne Edmunds Acree (E)  
 Edwin L Auman (E)  
 Kenneth G Berrier (E)  
 Carl M Borum Jr (E)  
 Curtis R Bovender (E)  
 Jean Clontz Brotherton (E)  
 Fairy Ayers Clark (E)  
 Joseph F Dale Jr (E)  
 Frank N Early  
 Floyd R Ennis (E)  
 Stella Redding Ervin (E)  
 Lewis H Evans (E)  
 F Owen Fitzgerald  
 Robert B Glisson (E)  
 G Leon Green (E)  
 William M Hennis (E)  
 Emmett E Hiatt Jr (E)  
 Robert L Honbarrier Jr (E)  
 Ernest J McFetters Jr (E)  
 James F McGee  
 Richard D Meisky (E)  
 Kenneth M Poindexter (E)  
 Joyce Mills Robertson (E)  
 Ray M Shore (E)  
 William L Sowers (E)  
 William Edgar Turner (E)  
 Carlotta Autrey Warren (E)  
 Harold L Waters (E)  
 Murray M White Jr (E)  
 Mary Frances Hunter Williard (E)  
 Betty Jane Gibbs Zammit (E)

### Class of 1952



Class Chairman:  
 Garland E Wampler  
 Number in Class: 178  
 Class Participation:  
 31 (23.7 per cent)  
 Gifts: \$2,065.00

Nelle L Adams  
 Arlene Venable Antee (E)  
 Bobbye Wagoner Ashmore

Frank O Cochran  
 Samuel J Cole  
 M Frances Dearman (E)  
 Laura DeHaven Dunn  
 George S Erath  
 William G Ervin (E)  
 E R Freeman  
 Lucille Craver Garrison (E)  
 William B Gray  
 Jeane Osborne Hendrickson (E)  
 Douglas R Holbrook  
 William H Hunter (E)  
 C Kenneth Ingram (E)  
 Joyce Kearns Ingram (E)  
 Jeremiah F Johnson  
 Jack H Klein  
 Dixie Wilson Klemme  
 Keith Mobley  
 Carlyle A Nance Jr (E)  
 Barbara Atkins Ridge  
 Jack R Ridge  
 John C Riggs (E)  
 Bob L Robertson (E)  
 Ovid Kearns Smith (E)  
 Barbara Tobias Svartzberg (E)\*  
 W Sid Tayloe Jr (E)  
 Garland E Wampler (E)  
 Ronie A York (E)

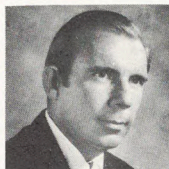
### Class of 1953



Class Chairman:  
 John R Sills  
 Number in Class: 163  
 Class Participation:  
 31 (30.4 per cent)  
 Gifts: \$1,190.79

Charles W Barnes (E)  
 Norma Jane Bogle Barrett (E)  
 Robert W Barrett (E)  
 Norman L Bowman Jr (E)  
 John R Bryson (E)  
 Betty Faye Hedgecock Campbell (E)  
 Viola James Craver (E)  
 R Palmer Day  
 Gay Bloodworth Evans (E)  
 James A Fowler Jr (E)  
 Harvey B Johnson (E)  
 Willie Davis Johnson (E)  
 Ruth Elaine Craven Latham  
 Robert E Lowder (E)  
 Ersie Matthews Pell McIntyre  
 Betty Blake McNeill (E)  
 Marion Fagg Moir (E)  
 Oren W Morton (E)  
 Robert L Oakley (E)  
 Bob L Parrish (E)  
 Jo Bundy Parrish (E)  
 John R Sills (E)  
 Nancy Stone Smith (E)  
 Lena Matthews Smith (E)  
 Neil E Smith (E)  
 Marion Warren Stanback (E)  
 W B Stanback (E)  
 Sallie York Ward (E)  
 Leo A Welch Jr (E)  
 Ann Fleming Whitesell (E)  
 D Ray Wonsidler

## Class of 1954



Class Chairman:  
Thomas M Charing  
Number in Class: 165  
Class Participation:  
19 (17.1 per cent)  
Gifts: \$1,450.50

James C Berrier (E)  
Jack J Bollinger (E)  
Thomas M Charing (E)  
Minnie J Crawley (E)  
Doris Farrar Early  
Wesley W Gaynor (E)\*  
Frank C Graham (E)  
Travis F Hanes (E)  
H C Hudgins Jr  
Frances Roberson Marlette (E)  
W H Needham Jr (E)  
Barry H Newsome  
Elaine Thompson Rapanos (E)  
James C Smith  
Cletis E. Snyder  
Betty Miller Strickland (E)  
Robert L Walker (E)  
Audrey Stutts Wiggs (E)  
Frank D Wiggs (E)

\*Deceased

## Class of 1955



Class Chairman:  
Roy R Bevan  
Number in Class: 168  
Class Participation:  
24 (23.8 per cent)  
Gifts: \$812.63

David M Abernathy (E)  
Frances Hunter Adams (E)  
Mary Jean Beaty (E)  
Roy R Bevan (E)  
Hubert C Clinard  
Robert W Combs  
Nancy Samuel Everhart (E)  
David L Francis (E)  
Shirley G Harris  
David H Holt (E)  
Charles T Jarrell Jr (E)  
Janie Merritt Lamb (E)  
Carolyn Adkins Myers (E)  
Rita Ward Needham (E)  
Sue Gary Newsome  
John R Peacock Jr (E)  
A Dick Sale Jr  
Edward S Small (E)  
Donald D Spencer (E)  
H D Stepp (E)  
Ralph G Vick  
David L Wagoner (E)  
Maxwell M Way (E)  
Bert W Westbrook

## Class of 1956



Class Chairman:  
Lorraine McCurry Griffin  
Number in Class: 191  
Class Participation:  
31 (23.7 per cent)  
Gifts: \$1,160.00

James M Andrews  
William E Bost (E)  
William Y Burton (E)  
Faye Peedin Collins (E)

Fred G Culler  
Betty Ann Tysinger Dawkins  
Koy E Dawkins  
Herbert D Dixon (E)  
Ellen Torrence Elgin (E)  
Kathryn Craven Gordon (E)  
June P Greene (E)  
Lorraine McCurry Griffin (E)  
Darrell L Hayden (E)  
Mary Alice Millbury Herbert  
W Fred Herbert  
Sylvia Craddock Jarrell (E)  
Sarah Forbis Joyce, (E)  
Alfredo J Julian (E)  
Emma Hartsell Julian (E)  
Dorothy Hoots McCollum (E)  
Vasso Cavas Millonas (E)  
David O Moore (E)  
Patricia White Moore (E)  
James A Northington  
Jack F Parks (E)  
Duffy L Paul (E)  
Nancy Watson Shelton (E)  
Fred A Southard Jr  
Libby Murray Stiffler (E)  
Gena Dickson White (E)  
T Harold White (E)

## Class of 1957

Class Chairman:  
Mary M Stuart  
Number in Class: 231  
Class Participation:  
28 (18.1 per cent)  
Gifts: \$1,109.47

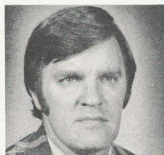
Walter S Baker Jr (E)  
Stan C Broadway (E)  
Elwood Mack Conrad (E)  
Sue Butt Cook (E)  
Shirley Nifong Craver  
Jackson D Dobbins (E)  
Robert O Dockery (E)  
Barbara Ann Edwards (E)  
Betty Lord Francis (E)  
Florence Fishel Hauser (E)  
A Ray Hughes (E)  
Louise Farlow Idol (E)  
Mary Camilla Isley (E)  
Ruth Ward James  
Sylvia Bobo Jenkins (E)  
Jack B Johnson  
James H Joyce Jr  
E Gene Kirby (E)  
Leon H Lee (E)  
Fred A Perdue Jr (E)  
William H Rule (E)  
Mariam Stallings Smith (E)  
Lloyd E Stiffler (E)  
Jerry W Stinson (E)  
Mary M Stuart (E)  
Cecil W Thomas Jr (E)  
Atwith Garrett Weikel (E)  
Charles H Whichard (E)

## Class of 1958

Class Chairman:  
Paul F Moss Jr  
Number in Class: 239  
Class Participation:  
28 (15.9 per cent)  
Gifts: \$1,565.12

Naomi Drum Bradley (E)  
William G Brewer Jr (E)  
Elaine Mills Broadway (E)  
Dulcie Tharrington Bryan (E)  
Kenneth A Campbell (E)  
Louise Pugh Corder (E)  
C B Crook Jr (E)  
Robert F Dabbs (E)  
Mary Hinkle Doby  
Charles J Fulp (E)  
T R Hendrix (E)  
Wilbur I Jackson (E)  
Norma Jane Kearns  
Judith Ward Lee (E)  
Luther Livingston Jr (E)  
Beverly Deal McCabe (E)  
Thomas C McLean (E)  
June Elder Moon  
Paul F Moss Jr  
Murphy M Osborne Jr (E)  
Leon Safrit  
Edwin Shufelt (E)  
George Maurice Smith (E)  
James E Smith (E)  
Elsie Cavanaugh Taylor (E)  
Thomas J Warren Jr (E)  
Larry D Wilkinson (E)  
Elsie Oakley Wolf (E)

## Class of 1959



Class Chairman:  
Floyd T Craven  
Number in Class: 231  
Class Participation:  
47 (29.4 per cent)  
Gifts: \$1,201.92

Terry R Alexander Jr (E)

Anonymous  
J Kemp Bennett  
Martha Turnipseed Berrier  
Donald Ray Bowers (E)  
Linda Groome Casey (E)  
Jane Martin Caudle  
W Carson Cox (E)  
Floyd T Craven (E)  
Betty Jarrett Crook (E)  
Frank D Daniels (E)  
Charles D Davis (E)  
Harry S Davis Jr  
Adrian B Delk (E)  
Irma Jane Scruggs Dowless  
Charles Dyson  
M Gray Everhart (E)  
Joyce Davis Falk (E)  
Patsy Moore Ginns (E)  
Mary Ann Hodgkin (E)  
George W Ivey Jr (E)

## Interim Travels Offered

Alumni and friends of the College are invited to join any of the study-travel courses offered during the Interim in January, 1978. For full details, mail the coupon below in an envelope to the tour director-instructor at the College, High Point, N.C., 27262. Be sure the name of the instructor is on the envelope.

AMERICAN SECURITIES MARKETS/New York City/ January 16-21/\$160 includes hotel (2 to a room), round trip transportation, meals, local transportation. If the securities markets don't turn you on, do your own thing! Where else can you do it for so little?/ Wilson Rogers

ART TREASURES OF ITALY/Rome, Florence, Venice, and other art sites/ January 9-24/\$895 includes meals and hotels/Mrs. Jane Burton

FINE ARTS IN LONDON, AMSTERDAM, MUNICH, PARIS/Cultural landmarks and institutions/January 13-27/\$1,445 includes hotels, meals, performances/Dr. James Elson

HOLY LAND/Major Biblical sites in Holy Land/January-ten day trip/approximately \$900 includes transportation, food, and hotel/Dr. Earl Crow

MEXICO/Major cities, museums, archeological sites, entertainments/December 31-January 21/approximately \$800 includes travel (roundtrip transportation, Greensboro) accomodations, entrance fees/Mrs. Polly Kayser

MUSIC TOUR OF WASHINGTON/Kennedy Center, Smithsonian/January 16-20/\$200 includes room and performances/Mrs. Pat May

### RETURN COUPON FOR INFORMATION

Send information on your trip to \_\_\_\_\_  
(place)

Name \_\_\_\_\_

Address \_\_\_\_\_

City \_\_\_\_\_ State \_\_\_\_\_ ZIP \_\_\_\_\_

Mail to the instructor named, High Point College, High Point, N.C. 27262

## Class of 1960



Class Chairwoman:  
Betty Gray Dorman Brown  
Number in Class: 229  
Class Participation:  
37 (22.7 per cent)  
Gifts: \$713.30

Glenn E Anderson Jr (E)  
Otis C Boroughs (E)  
Katherine Wilson Brinkley (E)  
Betty Gray Dorman Brown (E)  
Kay Carroll English  
H Lloyd Ginns (E)  
Edna Rose Duncan Guy (E)  
Elizabeth Peterson Hodge (E)  
Carol Steele Holder  
Eleanor Davis Horne (E)  
Frances Marion Huffman  
Charles R Johnson (E)  
Kathryn Traywick Johnson (E)  
Mary Pope Johnson  
W Reid Kearns  
M Loy Kennedy  
Eileen McIlvaine Koerner (E)  
Sylvia Parker Lawson (E)  
Elwin L Mackintosh  
Riley E Montgomery (E)

Betty Baughn Phillips (E)  
Frances Lewis Scott  
Donald M Sellers  
Danny J Sewell (E)  
Shelby Williams Sewell (E)  
Glenda Radcliffe Seymour (E)  
Sylvia Deaton Sims  
Grace Jensen Smith  
Clegg D Speight (E)  
Hassel Strader (E)  
Peggy Davis Thomas (E)  
William S Thompson  
Billy R Tucker (E)  
Maryette Brown Vaughn (E)  
W Thomas Warren (E)  
O Vernon Zimmerman (E)  
T Jack Zimmerman Jr (E)

## Class of 1961

Class Chairwoman:  
Vicki Smith Dallas  
Number in Class: 220  
Class Participation:  
38 (23.8 per cent)  
Gifts: \$754.50

Anne Welborn Andrews  
Doris Ann Joyce Baker (E)  
Dale W Brown (E)  
Hilda Barbee Byerly (E)  
William Cook Jr  
Gerard M Currier (E)  
Vicki Smith Dallas (E)  
E Vance Davis (E)  
Donald A Drapeau  
Libby Graham Drapeau  
Rheba Sue Riggins Duckworth

Lee Atress Daniels Faircloth  
Charles T Falk (E)  
P Earlene Dorsett Ferguson (E)  
Becky Jarvis Groom  
William T Guy (E)  
Shelby Strickland Higgs  
Donald L Jenkins (E)  
Ellen Julian Jenkins (E)  
Dell Conrad Johnson (E)  
Jacqueline Creech Kelsey (E)  
Eunice Young Lasala  
Lloyd Daryl McGuire  
Emma Noell Moss (E)  
David L Pancoast  
Inger Westerholm Pancoast  
Katie Sprinkle Parker  
James Preston Reecer  
Larry E Rogers  
Charles N Rowe (E)  
Darrell G Smith (E)  
Ross V Smith  
Dale L Spinnett (E)  
Glenn F Stevens (E)  
Kenneth D Sullivan (E)  
John C Teague  
Sylvia Newton Teague  
Nancy Mackintosh Watson (E)

## Class of 1962

Class Chairwoman:  
Larry D Wilson  
Number in Class: 240  
Class Participation:  
29 (16.5 per cent)  
Gifts: \$512.50

Betty Beauchamp Benge (E)  
Tony M Benge (E)  
Irene Torres Betancourt  
Charles V Carroll Jr (E)  
W Zane Daniel  
William P Davidson (E)  
Stewart B Dowless  
Alice Hobson Dudley (E)  
Daniel T Earnhardt  
Thelma Mitchell Eichholz  
Max T Furr  
Dixie Epting Goertemiller (E)  
Henry L Groomer Jr  
William W Harris  
Dale R Hodge (E)  
William V Kester Jr  
Tony J Lasala  
Michael A Latham  
David A Lowe  
M Laine Mashburn  
Steve R Moser  
Lynda Brantley Parker  
Dorothy Darlington Smith (E)  
Carolyn Vancannon Spillman  
Jean Barlow Taylor (E)  
LaRae Mosely Thompson  
Nina Lawson Vance  
George C Welch Jr (E)  
Larry D Wilson (E)

## Class of 1963

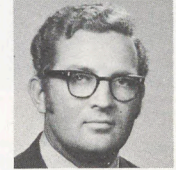


Class Chairwoman:  
Donna Lawrence Staley  
Number in Class: 242  
Class Participation:  
48 (28.2 per cent)  
Gifts: \$1,267.50

Nancy West Alford  
Judy Benge Anderson (E)  
Sidney E Bailey (E)  
Gloria Teague Best  
Sonya Robertson Bishop (E)  
Gayle Paxton Boles (E)  
Susan Tilley Bowen (E)  
C Sue Bradley (E)  
Ted L Brazzell (E)  
Gerald A Bryant (E)  
Richard P Budd (E)  
Sandra Wilson Burns  
D Donald Cashion (E)  
Don C Caudle (E)  
William F Cope (E)  
Beverly Ann Crofts (E)  
Linda Samuels Davidson (E)  
Menzette Donahue (E)  
Gary R Ern (E)  
Rayford B Grant (E)  
Roy A Grant  
Walter K Griffin (E)  
Geraldine Palmer Hauser  
Patti Ann Colliver Hudgins  
Dora Jeffreys Lancaster (E)  
Patricia Key Landreth (E)

Daniel E Lawing  
Linda Loven Lewis (E)  
Winfred E Lindley (E)  
A Ray Murphy Jr (E)  
Elizabeth S Neale (E)  
JoAnne Jenkins Nesselrodt (E)  
Lawrence R Nolan (E)  
Jimmy D Patterson (E)  
Mary Belle Patterson  
Cynthia Fletcher Petrea  
Glenda Williams Reece  
Caroline Peck Sowder (E)  
Donna Lawrence Staley (E)  
Fred L Stone (E)  
Eugene F Street (E)  
Ann Surratt Sullivan (E)  
Carlyle M Teague (E)  
Natalie Tunstall Tennant (E)  
John E Ward Jr (E)  
C L Weisner  
Marilyn Floyd Woodall (E)  
Ann Swindell Wyche

## Class of 1964



Class Chairwoman:  
Frank M Jarvis  
Number in Class: 199  
Class Participation:  
31 (18.2 per cent)  
Gifts: \$1,837.48

Norman L Andrews  
Barney L Burks (E)  
Wayne C Curry  
Donald M Dwiggin (E)  
Margaret Burns Eller  
Kathie Sturm Fallin (E)  
William D Fallin (E)  
David A Gray (E)  
Duane Thompson Hartsell (E)  
Robert P Hartsell Jr (E)  
Diane Westmoreland Haynes (E)  
Olen G Haynes (E)  
William J Jarrett  
Frank M Jarvis (E)  
Fred I Jones (E)  
Robert D Kornegay (E)  
Jerry L Kyle (E)  
Marlene Brinkley Lambeth (E)  
Gail Geyer Lewis (E)  
W Wayne Lewis (E)  
Carolyn McMasters Lineberry (E)  
Donald W Lineberry (E)  
Mary Lou Troutman Moose (E)  
Carolyn Frye Munro (E)  
Bob H Philbeck (E)  
Thomas Roger Pike (E)  
I Wayne Pope (E)  
Patricia Poindexter Reed (E)  
James L Reiffen  
Louella Richards Ward (E)  
Gordon Yarborough

## Class of 1965

Class Chairwoman:  
C J Neal Lipski  
Number in Class: 247  
Class Participation:  
27 (17.9 per cent)  
Gifts: \$340.62

Floyd L Berrier (E)  
Ronald G Berrier  
Linda Brewer Brown (E)  
Richard D Bulla (E)  
Judy Raykes Burks (E)  
Sue Marion Cashion (E)  
Michelle Schmidley Crawford  
John B Farlow Jr (E)  
Franklin W Grice (E)  
Louise Foster Hendrix (E)  
Jean McCollum Hurt (E)  
Phyllis Giles Jarvis (E)  
E Linwood Johnson  
Janet Doby Kemp (E)  
Frank S Lambeth Jr (E)  
C J Neal Lipski (E)  
Judy Lane Mashburn  
Rickie W Mills (E)  
Janice Younts Myers (E)  
Billy Joe Parker  
Charles E Ritchie Jr (E)  
Kay DeMik Stewart  
Kirk K Stewart  
James A Stone (E)  
Ann Armentrout Teague  
Albert G Trombetta Jr (E)  
Sandra Tate Van Belois



## Class of 1966

Class Chairman:  
Ned B Owens  
Number in Class: 247  
Class Participation:  
26 (11.9 per cent)  
Gifts: \$924.50

Thomas H Blake (E)  
Myra Morris Buff (E)  
Stephen F Buff (E)  
Peggy Hooper Buffum (E)  
Mary Lawson Files  
N Ray Hester (E)  
Stuart M Hoyt Jr (E)  
Sandra Hargrove Johnson  
David L Kemp (E)  
Gene C Kester (E)  
William E Lang (E)  
Gail Raines Lindley (E)  
Robert G Macy  
Helen Feelhaver Mann  
Mary Elizabeth Neese Moore (E)  
Harold M Moose (E)  
Linda J Morgan  
Richard W Olson (E)  
Ned B Owens (E)  
Ann Talley Parker  
Stephen R Pearson  
Carlos Rios-Jordan (E)  
Jane Logan Rogers  
Raymond W Rogers  
David L Sledge (E)  
Norma Sue Smith

## Class of 1967

Class Chairman:  
Angela Smith Davenport  
Number in Class: 201  
Class Participation:  
22 (11.8 per cent)  
Gifts: \$526.06

John W Buffum (E)  
LaRue Leonard Cline (E)  
Andrew W Craig (E)  
Angela Smith Davenport (E)  
David B Dorsey  
Robert E Hamilton  
Emile Auman Harris  
Hattie Patterson Hedgecock (E)  
Lois Jean Mainwaring Houpe (E)  
Eloise Freeman Jones  
L Kirk Jones Jr  
Laura Lenz MacArthur (E)  
Larry K Matthews (E)  
Betty Jo Vaughn Mills (E)  
Johnsie Simmons Rios-Jordan (E)  
James W Stitt (E)  
Douglas Thayer  
Donald L Tuggle (E)  
Robert P Weiss II (E)  
Robert A Wells Jr (E)  
Ann Mackie Widener (E)  
Linda Hollar Wright (E)

## Class of 1968

Class Chairman:  
Jonathan L Faulkner  
Number in Class: 231  
Class Participation:  
29 (13.0 per cent)  
Gifts: \$362.82

Susan Griffin Campbell  
Kay Jackson Carter (E)  
Mary LaSalla Davis  
Peter R Davis  
Roger W Duggins  
Jonathan L Faulkner (E)  
Mary Klausman Garland  
Larry W Garrison  
Judith Carlton Greer (E)  
Claudia Payne Grice (E)  
Lynn Edmonds Hamilton  
Sammie Steele Hinshaw  
Elizabeth A Horigan (E)  
Susan Applegate Hughes (E)  
Barbara McDiarmid Johnston  
Stephen M Laney  
Nancy Taylor Loewenthal (E)  
Jim H Martin  
Emile Pickett Parvin  
Mary Crockett Ritchie (E)  
Anne Montague Schmidt (E)  
Wilton A Smith Jr (E)  
Diane Abbott Steele  
Charles P Teague (E)  
Donna Ebert Thurman  
Lynne Younts Tuggle (E)  
Forrest Wagener, II (E)  
Randolph P Waugh (E)  
Shelby Jean Wilkes (E)

## Class of 1969



Class Chairman:  
Ray and Jane Baity  
Number in Class: 310  
Class Participation:  
47 (17.1 per cent)  
Gifts: \$1,103.04

Susan Steed Adcock  
Jane Wagner Baity (E)  
Raymond A Baity (E)  
Clarence R Conrad (E)  
Lynda B Corn (E)  
Judith Anne Davis  
H Wayne Eddinger (E)  
Joel W Farlow (E)  
William A Fidler  
Susan M Fischer (E)  
Cassandra Ritchie Forth (E)  
Laird M Freeman (E)  
Beverly Molitor Gebicke (E)  
Alice Thompson Hadley  
Sam G Hardister III (E)  
Jane Phillips Harjes (E)  
Fred C Hughes (E)  
Diane Niland Jones (E)  
Donna L Kirk  
Elaine Seigle Laney  
William J Lagos (E)  
Linda Huff Lineberry  
Ronald L Loeventhal (E)  
Doris Whitt Malany  
Ralph S Malany  
Marcia Ranier Marshall  
Patricia J Nance  
Paul Scott Owen Jr (E)  
Judy L Parker (E)  
Wendell M Patton III  
James F Payne (E)  
Martin Douglas Rayle (E)  
Claudia Babb Reich (E)  
Mintie Saintsing  
Dennis Hall Sigmom (E)  
Judith Garner-Simpson (E)  
Richard L Sink (E)  
Peggy Perry Sisk (E)  
Kenneth D Smith (E)  
Jean Wakenight Smith (E)  
C M Stallings  
Patricia Wimlish Stallings  
Cheryl Johns Vazzana (E)  
Gail Hetherington Wagoner (E)  
Linda Mellette Weiss (E)  
Frances Matthews Zumbro  
Val E Zumbro

## Class of 1970

Class Chairman:  
Richard H Boyd  
Number in Class: 298  
Class Participation:  
32 (12.1 per cent)  
Gifts: \$4,687.00

Ted W Belch (E)  
David B Bishop (E)  
Teresa G Botts  
Anita Hill Bowman (E)  
B Gray Bowman (E)  
Richard H Boyd (E)  
Carol Crutchfield Carroll (E)  
Martha Payne Cecil (E)  
Charles C Crutchfield  
Daniel M Culp Jr (E)  
Caryl Beam Dickens  
Brian E Ditzler  
J Sidney Downey (E)  
Dale D Ensor  
William S Fagg III (E)  
Martha Ann Sawyer Fogleman  
Martha Thomas Grimes (E)  
Warren L Grimes (E)  
Martha Matthews Hardie  
Ellen Teague Hartman (E)  
Anne Nulsen Howell  
Ann Davis Lagos (E)  
Robert B Lathan (E)  
Clement L McCaskill (E)  
Judith Harris McCracken  
Kevin B McCracken  
Linda A Meyer  
Mido R Qubein (E)  
Carolyn Moses Sanders (E)  
Bonnie Lott Schwarz (E)  
Tony S Townsend (E)  
Wayne E Woodell (E)



# Who Needs Alumni? We do.

High Point College Alumni have always responded to the needs of the College; your cooperation, your support, and your generosity have always been appreciated.

Now we need you in a new way. The College is asking for your assistance to identify prospective students and to encourage them to apply for admission. You, our alumni and other friends, are in the best position to recommend the College to these students. You are acquainted with the College; your Alma Mater is innovative, church-related, and firmly founded on the best values in Western culture. With the curriculum being constantly evaluated and with courses being added to meet the needs of a changing world, the College is able to prepare young people for leadership in tomorrow's world.

Enrollments at many colleges and universities across the nation are on the decline; standards for entering students are being lowered at many of these institutions to prevent a further drop. High Point College is maintaining an adequate enrollment without lowering the standards but the College needs your cooperation and involvement to keep everything "in good shape."

There are thousands of potential students about to graduate from high school who want and need the distinctly career-oriented liberal arts education provided by High Point College. If you recommend a student who then applies for admission, the usual \$10 fee will be waived. Complete the coupon below and mail it in an envelope to the Admissions Office, High Point College, High Point, N.C. 27262. An application will be mailed to the student you name and when it is returned to the College, it will be processed without charge.

You can help the student make an important decision; the student saves \$10 and the College can start another young man or woman on a life of leadership.

To acquaint you with the total application process, in addition, a blank Application will soon be mailed to all alumni and friends. ■

## Alumni Courtesy Card

Discuss the College with the student of your choice. Fill in the blanks below and mail this Card to the Admissions Office.

Student's name \_\_\_\_\_

Address \_\_\_\_\_

City \_\_\_\_\_ State \_\_\_\_\_ ZIP \_\_\_\_\_

Telephone \_\_\_\_\_ high school or college \_\_\_\_\_

Date to enter High Point College \_\_\_\_\_

Sponsored by (your name) \_\_\_\_\_ Class of \_\_\_\_\_

## Class of 1971

Class Chairman:  
Beth Holcomb Sigmon  
Number in Class: 248  
Class Participation:  
19 (8.2 per cent)  
Gifts: \$226.54

Gary E Austin (E)  
John H Boles II (E)  
James F Brewer Jr  
Michael B Brown  
Susan Euler Cole  
Donald L Davis  
Cheryl Phillips Fidler  
Mark E Gebicke (E)  
Ellen E Grassi (E)  
Linda Hinkleman Gunter  
Gilbert E Hyatt (E)  
Russell A Jones Jr (E)  
Michael S Koch  
Melinda Peabody (E)  
Linda C Reed (E)  
Beth Holcomb Sigmon (E)  
David A Steves (E)  
Daune Ward Teague (E)  
Gary L Wegner (E)

## Class of 1972

Class Chairman:  
John A Young  
Number in Class: 256  
Class Participation:  
23 (9.8 per cent)  
Gifts: \$445.41

Lindsey Elaine Smith Baer  
Linda G Bagby (E)  
Jan Henry Bodenheimer  
Thomas A Carter (E)  
Susan Greenhaugh Christman  
Patricia McDowell Dawson  
David J Eichlin (E)  
Sharon Hege Everhart  
Robert W Gilliland (E)  
Edward F Grune  
Doris Price Hill (E)  
James V Hughes  
Sandra Whitfield Hunter  
Beverly Stoddard Koch  
Donny C Lambeth  
Phyllis Weyrauch Lloyd  
Mary Riecks Milligan  
Charles R Nance  
Deborah Freeman Reich  
Leonard S Samet  
Joyce E Smith (E)  
Ginery M Twichell  
Christine Neese Wilson

## Class of 1973

Class Chairman:  
David T Wilson  
Number in Class: 249  
Class Participation:  
23 (9.7 per cent)  
Gifts: \$1,409.40

Timothy H Allen  
Patricia Pressley Aylmer (E)  
Robert L Brandon  
Cynthia Dick Brooks (E)  
Joyce Gunn Burnette  
Marshall Edwards  
Sidney J Gunst  
Patti Rask Hyatt (E)  
Jeanette Jones Kiem  
John C Kiem  
Judith Morris Koontz (E)  
Amanda A Lewis  
Alphonsus Obayuwana  
Yousef S Qubain  
Rosemary Ritter  
Frances Roach Sink  
Gerald A Sutton (E)  
Linda Lewis Von Cannon  
Elizabeth Wilhoit  
Ann Gillis Wilkinson (E)  
David T Wilson  
Virginia Dix Wilson  
Paul Johnson Woodward (E)

## Class of 1974

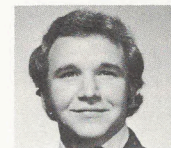


Class Chairman:  
Elaine F Conklin  
Number in Class: 243  
Class Participation:  
13 (5.9 per cent)

Gifts: \$161.23

Frances Greene Boyer (E)  
Charles E Burgess  
Gazelia Payne Carter  
Daniel J Collins  
Elaine F Conklin (E)  
Charlene Jones Duggins  
Mary M Kirkman (E)  
H C Lloyd Jr  
Ronald T Macklin  
Ronald D Ripple (E)  
Bruce B Tingle (E)  
Michael W Walker (E)  
Daniel S Wall (E)

## Class of 1975



Class Chairman:  
Stephen L Lawson  
Number in Class: 225  
Class Participation:  
42 (19.8 per cent)  
Gifts: \$440.00

Morris S Adams (E)  
Anonymous  
Anonymous  
Bonnie M Beasley  
Mary Clark Cole Branch (E)  
Timothy D Branch (E)  
Ann Williams Brinson (E)  
Richard I Brooks (E)  
Billy Ray Burchfield  
Karl L Cagle  
Kathy Bosserman Cagle  
Cathy Calloway (E)  
Keith B Carlson (E)  
Paul O Cloud  
James W Coble (E)  
George M Cochran  
W Gartley Evans (E)  
George W Ferguson (E)  
Marion H Gibson Jr (E)  
Danny W Gordon (E)  
William B Gray Jr (E)  
Barbara Hare Green (E)  
Jon R Green (E)  
David M Hughes  
Pamela Gobble Lambeth  
Theresa Hartman Langley (E)  
Pamela Slater Lawson (E)  
Stephen L Lawson (E)  
L Katherine Miller (E)  
Douglas A Moore (E)  
Francis S Motsinger  
Sharon L O'Brien (E)  
Leland M Patton (E)  
Marcus S Portis  
Douglas H Potter (E)  
Anne L Stanfield (E)  
Cynthia L Stocker (E)  
Alice Brown Stout  
Dean Robert Styles (E)  
Cindy Wood Tanner  
Paula Vavrinec  
Joyce Dillman Wagener

## Class of 1976



Class Chairman:  
Robert E May  
Number in Class: 224  
Class Participation:  
14 (7.1 per cent)  
Gifts: \$100.85

Bonita L Beldus  
Jerry C Burns  
David C Caldwell  
J Thomas Eisele  
Bobby R Heilig  
Gary L Hemby  
William Hundley  
Mary Lou Perryman Kyle (E)  
Robert E May  
Terry Pegrum  
Thomas C Robinson  
Carol R Schimpf  
William Carvin Stout  
Douglas M Tanner

## Associate Members

Class Chairman:  
Leo J Heer  
Number in Class: 61  
Class Participation:  
21 (34.4 per cent)  
Gifts: \$12,571.13

Allen P Brantley H'51 (E)  
Charles F Carroll H'52  
Glenn Wright Draper H'76  
A Mitchell Faulkner H'71 (E)  
Edgar B Fisher H'56 (E)  
David W Flude H'72 (E)  
Thomas S Haggai H'65 (E)  
Leo J Heer H'69 (E)  
C C Herbert Jr H'54 (E)  
W Arthur Kale H'51 (E)  
Julian A Lindsey H'69  
Edward Mendenhall H'66 (E)  
Edgar H Nease Jr H'67  
Paul A Reid H'56  
Cecil W Robbins H'53 (E)  
Philip L Shore Jr H'62  
Robert G Tuttle H'63 (E)  
Capus M Waynick H'63 (E)  
Wilson O Weldon H'52 (E)  
J Garland Winkler H'65 (E)  
N P Yarborough H'74 (E)

## Honorary Members

Miss Debra Y Collins  
Mrs Ralph W Cox  
Mr and Mrs Burton W Davis  
Mrs J L Finch  
Mr and Mrs Felder L Foster  
Mrs Lucile Cullers Herr (E)  
Dr and Mrs L H Hollingsworth  
Mrs Norman J Holly  
Mr and Mrs Herbert Huggins (E)  
Mrs Kathleen Hughes  
Mr and Mrs Joe D King  
Mr Allen S Knott  
Mr and Mrs Cletus H Kruyer (E)  
Dr and Mrs William R Locke  
Mrs Dolan Loflin  
Miss Dostia L Motsinger  
Mrs Charles T Parker  
Mrs Martha L Rogers  
Mrs John A Tudor  
Mr and Mrs Luther J Upton Jr  
Mr Arvil E Von Cannon  
Mrs Robert E Williams (E)  
Mr and Mrs Ronald E Young



## Friends of the College

### Individuals

Mr William F Aldridge  
Miss Jennifer E Alley  
Mrs Lucy R Anderson  
Mr Warren L Anderson  
The Rev Chester J Andrews  
Anonymous  
Mr John D Armstrong  
Dr & Mrs Robert K Arthur  
Mr Mike Ayers  
Mr & Mrs William E Ballard  
Ms Kitty Barling  
Mr R E Barnard  
Mrs Carl E Bash  
Mr & Mrs R Bash  
Mrs C W Bates  
Dr & Mrs Richard L Beard  
Ms Betty Bennett  
Dr Joseph B Bethea  
Mrs Bessie Smith Blackwell  
Mr Arthur Brewer  
Mr Glenn A Brown  
Dr S Weldon Brown  
Mr Howard Bryant  
Mr N Kelly Bullard  
Mr Jack H Campbell  
Mr & Mrs Calvin Canody  
Mrs J Elwood Carroll  
Mr & Mrs Robert F Carroll  
Mr Frank K Caulfield  
Dr Leonard R Cashion  
Mrs H A Cecil  
Mrs Foil V Charles  
Mr & Mrs J Clarence Coggins  
Dr David W Cole  
Ms Elizabeth Collier  
Mr & Mrs Jesse L Coltrane  
Mr Benjamin Cone  
Mr & Mrs George E Copenhaver  
Ms Jean T Craig  
Mr & Mrs Charles L Cranford III

Mr Sidney M Crowder  
Mr R Frank Dalton  
Mrs W H Daveler  
Mrs Ben Day  
Dr William L DeLeeuw  
Mr R S Disher  
Mr Phillip R Dixon  
Ms Katie Dunn  
Mr Tom R English  
Dr E Roy Epperson  
Mr Willie Etheredge  
Mr Faiz R Faizi  
Mr W T Floyd  
Dr Austin P Fortney  
Mr James E Foscoe  
Mr & Mrs John C Foy  
Mrs Joe M Francis  
Ms Francine Froneyberger  
Dr Harold E Fuller  
Dr Charlie Q Futrell  
Mrs J E Garlington  
Mrs Dorothea E Garrison  
Mr Sidney A Gayle Jr  
Mrs Karl R Gentry  
Mrs L W Gerringer  
Mr Virgil Gerringer  
Mrs Margaret Bryant Gibson  
Mr C Horton Godwin  
Mr Theodore R Groom  
Mr Wilbur Groome  
Mrs Marlene Hairston  
The Rev Robert M Hardee  
Mr & Mrs R D Harper  
Mr C Felix Harvey  
Mr Charles F Hartman  
Dr David B Hawk  
Mr & Mrs Horace Haworth  
Mrs Dorothy E Hays  
Mr & Mrs Douglas B Hendersson  
Mrs Laverne I Hendrix

Mr & Mrs J W Hetherington  
Dr Fred W Hill  
Mr Joseph P Hollingsworth  
Mrs Ben Day  
John D Idol Estate  
Mr R S Disher  
Mrs I Paul Ingle  
Mrs Anna Johnson  
J T Johnson Estate  
Mrs Pauline B Kayser  
Mr Charles L Kearns  
Mr Martin Keaton  
Mr & Mrs William R King  
Ms Janice Kinley  
Mr O A Kirkman  
Mrs Lettie F Kirks  
Mr A S Knott  
Mr C H Kruyer Jr  
Mr R Fred Lambeth  
Mrs C T Latimer Jr  
Mrs Charlotte H Leavel  
Ms Nausica Ledbetter  
Dr Lew J Lewis  
Ms Rhonda Gail Light  
Mrs F L Lindsay  
Mrs Helen R Lindsay  
Dr & Mrs William R Locke  
Mrs Mary Elizabeth Long  
Dr & Mrs W J McAnally Jr  
Mrs William J McConnell  
Mr Charles W McCrary  
Mrs C O McKay  
Mrs Rick McKinney  
Mrs French McMillan  
Ms Mary McRae  
Ms Virginia W Marcinko  
Mr Legette Marshall  
Mr & Mrs Charles M Mendenhall  
Mrs J E Millis  
Mr James H Millis

Mrs Jesse E Millis  
Mr George E Norman Jr  
Mrs Louise Nowicki  
Mr & Mrs L Taylor Oakes  
Dr Nelson F Page  
Mr & Mrs H R Pancoast  
Mrs W F Parker  
Dr Barbara Pass  
Dr Wendell M Patton  
Dr Edward J Piacentino  
Ms Christina Pickens  
Miss Margaret Pickens  
Mr J E Pleasants  
Dr Edwin L Plowman  
Mr Raiford M Porter  
Mrs Marion Louise Potter  
Ms Louise J. Powell  
Mrs Oscar L Powell  
Mrs Melva T Price  
Mr Mott Price  
Mr James R Pritchett  
Mrs W Frank Redding Jr  
Mr Milton T Riley Jr  
Mr & Mrs James L Roberts  
Mr Joseph W Robinson  
Mr & Mrs Stephen Rose  
Mrs Courtney B Ross  
Dr T M Stanback  
Miss Grace Sawyer  
Mrs Frances Sayre  
Mrs Irene G Schmidt  
Mr & Mrs Phillip Scott  
Mr Robert H Shaw  
Mr & Mrs J W Shepard Jr  
Mr & Mrs T J Shreve  
Miss Laura Shuford  
Dr & Mrs L H Simon  
Mr & Mrs Robert R Siegel  
Mrs Evelyn W Simpson  
Mrs E Paul Sink

Ms Viola Sloan  
Mr & Mrs James R Sloop  
Mrs Morgan A Smith  
Mr & Mrs Robert W Smith  
Ms Lois Spessart  
Mr Thomas W Sprinkle  
Mr E Bowman Stafford  
Mr & Mrs S R Stafford  
Mr J Alton Stanford  
Mr Paul Stophel  
Mrs Emily Sullivan  
Mr & Mrs Harry E Swartzbaugh  
Mrs Carl Thrash  
Mr & Mrs E L Tipton  
Mr & Mrs P H Tompkins  
Mrs Walter R Tuttle  
Mr Arvil VonCannon  
Ms Evelyn Walls  
Ms Lola Ward  
Mr W Wray Ward \*  
Mrs Lucy Washington  
Dr Owen M Weatherly  
Mrs D B Webb  
Dr Leo Weeks  
Mr George C Welch  
Dr Carl M Wheelless  
Mrs Faye C Williams  
Mr & Mrs Kenneth Williams  
Mrs Katherine G Winslow  
Mr & Mrs Arthur S Withers  
Mr William F Womble  
Dr Fred T Yeats  
Ms Rebecca K Zellers  
Mr D T Zimmerman Jr

\* Deceased



## ALUMNI ASSOCIATION EXECUTIVE COMMITTEE 1977-1978

**OFFICERS:** *President*, Lyles H. Kearns '50, High Point; *Past President*, Dell Conrad Johnson '61, Winston-Salem; *Vice President*, Geraldine Rash White '42, Statesville; *Secretary*, Robert D. Kornegay '64, Greensboro; *Treasurer*, Donald M. Dwiggin '64, Winston-Salem.

**MEMBERS OF THE EXECUTIVE COMMITTEE: (ELECTED):**  
1977 — Frank M. Jarvis '64, Lawndale; Rita Ward Needham '55, Thomasville; 1979 — William S. Fagg, III '70; Elsie Oakley Wolf '58, Mebane; 1980 — Robert E. May '76, Winston-Salem; Eleanor C. Young '32, High Point.

**DIRECTORS (CHAPTER PRESIDENTS):** *Alamance* — R. Hardy Tew '56, Graham; *Atlanta* — Hazel Shore Mebane '57, Atlanta; *Forsyth* — C. Renneker Breedin '74, Winston-Salem; *High Point* — W. Gart Evans '75, Greensboro; *New Jersey* — Cheri P. Gonter '71, Linden; *North Carolina Conference* — Chester D. Brown '50, Kinston; *Washington* — Linda G. Bagby '72, McLean; *Western North Carolina Conference* — Dwight E. Whitlock, Jr. '59, Gastonia.

**STUDENTS (EX-OFFICIO):** *Student Government Association President* — Allen Carter '78, Mocksville; *Senior Class President* — Christopher Ware '78, New Jersey; *Student Union President* — Christopher Ware '78, New Jersey.

**ANNUAL FUND:** *National Chairman* — Arthur R. Bookout '39, Wilmington, Delaware; *Advanced Giving Chairman* — Gordon (Yogi) Yarborough '64, High Point.

**COLLEGE AFFAIRS:** M. Louise Adams '29, (Life Member); Cletus H. Kruyer, Vice President for College Affairs; Robert E. Williams '59, Director of Alumni Affairs.



## Corporations

Acme Sample Books Inc  
Adams-Millis Corporation  
Alderman Studios  
Alma Desk Company  
Amsco Decorative Fabrics  
Atlantic Engineering Company Inc  
Atlantic Insurance & Realty Company  
Broyhill Industries  
Bryant Electric Company Inc  
Ken Campbell Inc  
Carolina Container Company  
Carolyn Fabrics Inc  
Central Savings Bank  
Childers Concrete Company Inc  
Custom Processing & Mfg Inc  
Diversified Southern Industries Inc  
(Mister Apparel Inc)  
Dixie Container Corp of High Point  
Dixon Odom & Company  
Dobbins Electric Company Inc  
Edwards Furniture & Uphl Company  
Electric Supply Inc  
Erath Sales Company  
First-Citizens Bank & Trust Company  
First Union National Bank  
Flex-O-Lators Inc  
General Paper Company  
Edward L Grimsley Veneers  
Gross Veneer Sales  
Guardsman Chemicals Inc  
Guilford Mills Inc  
Guilford Optical Company  
Tom Haggai & Associates  
Harriss & Covington Hosiery Mills Inc  
Haywood & Rankin Inc  
Henley Paper Company  
Bob Herman Inc  
Highland Motors Inc  
High Point Bank & Trust Company  
High Point Boiler & Tank Company Inc  
High Point Chemical Corporation  
High Point Enterprise Inc  
High Point Systems  
High Point Woodworking  
Household Finance Corporation  
Hunter & Company of N C Inc  
Horace G Ilderton Inc  
Ilderton Oil Company  
International Playtex Company  
Jones & Peacock Inc  
KayLyn Inc

Kester Machinery Company  
Kiddie Pot Hosiery Mills Inc  
Libby Hill Seafood Restaurants Inc  
The Lilly Company  
McEwen Lumber Company  
Marsh Furniture Company  
Minnesota Mining & Mfg Company  
Monark Shade Company  
National Electronic Card Company  
N C Association of Insurance  
Agents Inc  
North Carolina National Bank  
Old Dominion Freight Line  
Perpetual Savings & Loan Association  
Petlin Inc  
Piedmont Natural Gas Company Inc  
Piedmont Publishing Company Inc  
Piedmont Savings & Loan Association  
Plumb-Mechs Corporation  
Porter Brothers Inc  
Powell Plumbing & Heating Inc  
Nido Qubein & Associates Inc  
Ralph's Frame Works Inc  
Reliance Universal Inc  
Royals Inc  
Scott Paper Company  
Slane Hosiery Mills Inc  
Snow Lumber Company  
Southern Bell-Carrier & Repeater  
Southern Broadcasting Company  
Southern Film Extruders Inc  
Southern Life Insurance Company  
Styrex Industries Inc  
Tobias Inc  
U S Furniture Industries  
Vesco Material Handling Equipment  
Wachovia Bank & Trust Company  
Wagner Veneers  
Geo T Wood and Sons Inc  
Woodmark Originals Inc  
Yarborough & Company  
Vann York Pontiac Inc  
Young's Furniture and Rug  
E E Younts Inc

## Foundations

American Humanics Foundation  
AMF/Hatteras Yacht Foundation  
Carolina Steel Foundation

Crumpler Foundation Inc  
McCrary-Acme Foundation Inc  
The Presser Foundation  
Z Smith Reynolds Foundation Inc  
Salisbury Community Foundation  
Sears Roebuck Foundation  
South Carolina Foundation of  
Independent Colleges Inc  
(Deering Milliken)  
Sigmund Sternberger Foundation Inc  
The Thomas Foundation  
Thomasville Furniture Industries Foundation  
Winston-Salem Foundation

Singer Foundation  
J P Stevens & Company Inc Foundation  
Travelers Insurance Company

## Miscellaneous

Adelphian Club  
Alpha Delta Kappa-Alpha Phi Chapter  
Altrusa Club of High Point  
American Business Clubs  
Anonymous  
Arthurs Travel  
Board of Higher Education and Ministry  
United Methodist Church  
Camden-Wyoming Lions Club  
Circle Tours Inc  
Davidson County Church Ext Fund  
Editing Dept University of Wisconsin  
Friendship Class/Liebanon Methodist Church  
The High Point Alumni Chapter  
High Point College Education Foundation  
High Point Jaycees  
High Point Monthly Meeting of Friends  
Independent College Fund of N C Inc  
Fannie McKinney Circle  
Madison Junior Service League  
Mid-Atlantic Center for Community Education  
University of Virginia  
Milford Mill High School  
John Motley Morehead High School  
North Carolina Association for the Blind  
North Carolina Association DEC of America  
North Carolina Officers Wives Club  
Peninsula Conference The United Methodist  
Church  
J Wood Platt Caddie Scholarship Trust  
Program Services Branch HEW  
St James Lutheran Church  
Spencer Memorial United Methodist Church  
United Methodist Women  
U A M E Scholarship Fund  
United Daughters of the Confederacy  
North Carolina Division  
Grace Waugh Circle  
Weaverville Home Extension Club  
Western North Carolina Conference  
United Methodist Women  
Westfield Rotary Club  
Westford Academy Athletic Boosters  
Wilkes County Unit NCAE

## Matching Corporation Gifts

Individuals who are employed by 603 companies and corporations in the United States have the opportunity of matching their gifts to Universities and Colleges through their employers.

The following companies matched gifts of employees given to High Point College during the past fiscal year.

Aetna Life & Casualty  
American Brands Inc  
American Credit Foundation  
Burlington Industries Foundation  
Federal National Mortgage Association  
Integon Foundation  
Jefferson-Pilot Broadcasting Company  
Jefferson-Pilot Corporation  
The P Lorillard Company Foundation  
(Loew's Theatre Welfare Fund)  
Mead-Johnson & Company Foundation Inc  
Metropolitan Life Insurance  
Minnesota Mining & Mfg Company  
National Life Insurance Company  
Phillip Morris Inc  
R J Reynolds  
Sandoz-Wander Inc

## Panther Club

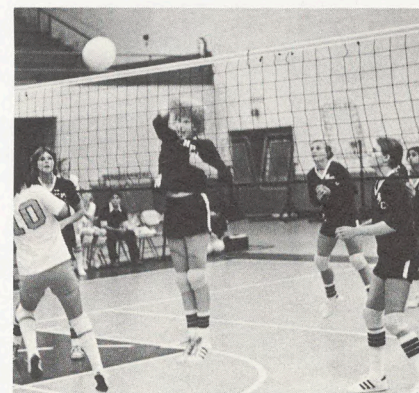
The High Point College Educational Foundation undergirds the total athletic program of the College with a variety of gifts and projects. Membership in The Panther Club, as the Foundation is called, is open to any friend or alumnus of the College. The designation of Grand Panther (indicated by an asterisk) is given to those who contributed \$100 or more to the work of the Club.

M Louise Adams '29  
T K Amos \*  
Wray W Amos  
Pete Armstrong \*  
Dr Edwin L Auman \* '51  
Ellis E Baker Jr \* '66  
David A Bean \* '59  
Herman W Bernard \* '38  
Black Furniture Company \*  
Dr John D Bridgers  
J Wray Brower '50

Richard P Budd \* '63  
Harold D Bull \* '58  
Jack H Campbell \*  
Robert T Carson '51  
Carter's Restaurant \*  
Dr Leonard R Cashion  
Thayer Coggin \*  
Dr David W Cole  
W Carson Cox \* '59  
Mrs Maggie Crow \*  
William P Davidson \* '62  
Gordon Eaves \*  
Thomas R English Jr \*  
Floyd R Ennis '51  
George S Erath \* '52  
William G Ervin \* '52  
Michael B Fleming \* '49  
R Frank Gay Sr \*  
Wesley W Gaynor '54  
Occo D Gibbs '38  
M Woody Gibson Jr '75  
Francel Goude  
Bill J Green  
G Leon Green \* '51  
William T Guy '61  
Dr Thomas S Haggai H'65  
H Richard Hallman \* '61

Al Harrison  
Dallas Hauser  
Henley Paper Company  
Carter T Holbrook \*  
Dr L H Hollingsworth \*  
R L Honbarrier '51  
Robert N Hovey \*  
Lloyd O Hughes  
George Hutchens \*  
Clarence M Ilderton '50  
T Carey Ilderton  
Charles T Ingram Jr \*  
Michael S Koch '71  
Cletus H Kruyer  
C S (Sammy) Lambeth \*  
R Fred Lambeth \*  
Robert K Latta \* '56  
W H Lee \*  
Wayland H Linthicum Jr \* '48  
Dr William R Locke  
G Reid Marsh  
James P Marsh \*  
J H Millis \*  
David R Mills \*  
Harold M Moose \* '66  
Mary Lou Moose \* '64  
Graham Morgan \*

Dale S Neel \* '65  
Paul Oakley \* '37  
Daniel R Odom \* '60  
Dr Murphy M Osborne Jr '58  
A Glenn Payne \* '44  
Piedmont Wholesale Company \*  
J Edward Pleasants \*  
Robert B Rankin \* '38  
Jack R Ridge \* '52  
J Wilson Rogers '37  
Marvin Sandifer '73  
James W Saunders \*  
M M Schwartz '32  
Lee W Sherrill \* '37  
Richard A Short '40  
John Southerland  
Jerry Steele \*  
Mrs Mildred B Stevenson \*  
Billy R Tucker '60  
W Edgar Turner \* '51  
R W Turney Jr \*  
Arthur M Utley Jr \*  
P K Wall  
David Wall \*  
C Linwood Weisner \* '63  
Elliott Wood \*  
Wood's Exxon \*



## Fall And Winter Sports

Alumni and friends of the College are invited to support the athletic teams by attending games. The men's basketball team has nine home games in Alumni Gym and 13 on the road. In addition, they will play in tournaments at Melbourne, Florida and Lexington. The teams will face opponents from the Carolinas Conference in 11 games. Home games are expected to begin at 8 p.m. but alumni should consult the sports pages for exact times. Home games are listed (below) in CAPITALS.

Nov 12	FIT Tournament, Melbourne Florida	Dec 31	Gardner Webb Holiday Tournament	Feb 1	ATLANTIC CHRISTIAN COLL*
25	Winston-Salem State Coll (doubleheader)	Jan 4	WINSTON-SALEM STATE COLL	4	LENOIR-RHYNE COLLEGE
26	Winston-Salem State Coll (doubleheader)	7	Elon College	8	PEMBROKE STATE UNIVERSITY*
30	Atlantic Christian College*	11	Pembroke State University*	11	CATAWBA COLLEGE*
Dec 3	ELON COLLEGE*	14	Lenoir-Rhyne College	18	Guilford College*
7	Open	18	GARDNER-WEBB COLLEGE	20	Appalachian State Univ
10	GUILFORD COLLEGE*	21	Catawba College*	22	Gardner-Webb College
		25	Barber Scotia College	25	PFEIFFER COLLEGE*
		28	Pfeiffer College*	Mar 3	Carolinas Conference Tournament

\* Carolinas Conference game

Women's Basketball schedule begins December 1 with three home games in Alumni Gym. The season includes the Carolina Christmas Classic, the Clemson Tournament, and championship tournaments. Sports fans should consult the media for additional details. Home games are listed (below) in CAPITALS.

Dec 1	PFEIFFER COLLEGE*	Jan 17	University of North Carolina-Greensboro	Feb 8	PEMBROKE STATE UNI*
3	WAKE FOREST UNIVERSITY	19	A&T STATE UNIVERSITY	11	CATAWBA COLLEGE*
10	ELON COLLEGE*	21	Catawba College*	13	Wake Forest Uni
20	Carolina Christmas Classic	24	East Carolina University	15	NORTH CAROLINA CENTRAL UNIVERSITY
21	Carolina Christmas Classic	26	APPALACHIAN STATE UNI	18	A&T State University
22	Carolina Christmas Classic	28	Pfeiffer College*	20	Atlantic Christian Coll
Jan 6	NC State University	31	Guilford College	23	NCAIAW State Tournament
10	Shaw University	Feb 3	Mars Hill College	24	NCAIAW State Tournament
13	Clemson Tournament	4	WESTERN CAROLINA UNI	25	NCAIAW State Tournament
14	Clemson Tournament	Mar 3	Carolinas Conference Tournament		

\* Conference games

## Highlights And Headlines

WESLEY W. GAYNOR, retired bursar of the College, died September 1. He was 68 and had been in declining health for one year. He graduated from High Point College and joined the administrative staff the following year. He was appointed bursar in 1961. In addition to other responsibilities in the College, his church, and community, Wes was treasurer of the Panther Club for the past three years. He received the Louis Harris Humanitarian Award in 1977 for his service to the community.

A SCHOLARSHIP FUND has been established at the College in memory of Miss E. Vera Idol, longtime English professor. \$4,500 has been contributed by more than 200 alumni and friends of the College. The goal of \$5,000 will provide a \$500 scholarship annually to a deserving student majoring in English. Contributions may be sent to the Alumni Office at the College, earmarked for the Vera Idol Scholarship.

SPECIAL EVENTS and speakers at the College during the fall and winter include a wide variety of attractions. Alumni and friends are invited to all special events at the College. The following list may be of particular interest: Dr. Benjamin Hooks, executive director of the NAACP, September 27; "Caligula", fall drama production, October 12 - 15; Clive Barnes, New York theatre critic, November 7; Buffo, nationally-known mime, November 9; Dr. Cratis Williams, folklore and ballads, November 11; poetry and fiction workshops with guest authors, November 12; a Spanish Fiesta, November 16; Handel's "Messiah," performed by the High Point Chorale and Orchestra, December 4; and a Christmas concert by the High Point College Community Band, Chorus, & Singers, December 5.

JANET HINKLE, psychology major and music student, has completed her project of building a harpsichord. As a freshman, she heard a visiting artist at High Point College play his harpsichord and she was determined to have her own. A box of parts arrived at her home in August, 1976, and she went to work. Another box of parts came in February, 1977, and she finished the instrument by the end of July. Janet had no woodworking or mechanical experience prior to tackling the boxes of parts. The Renaissance instrument has 52 keys on a single manual and two sets of strings. She plans a concert at the college before her graduation in May. In addition, Janet is a Presidential Scholar and was a junior marshall. Upon completion of the instrument, she was the subject of a full page feature in the High Point Enterprise.

RADIO STATION WWIH, quartered in the Tower of Roberts Hall, is expected to start broadcasting in the near future. The FM radio station received its license from the FCC in July and was assigned the frequency of 90.5 Mhz with call letters WWIH. Students will operate the station under FCC rules and regulations. The transmitter, now on order, will put the station on the air with a 10-watt operating power.

A SCHOLARSHIP honoring the Rev. and Mrs. Robert M. Hardee, Greensboro, has been established at the College by his sister, Mrs. Lucy H. Olsen, Durham. The Robert M. and Frances Spainhour Hardee Scholarship will support academically qualified students who are preparing for the fulltime Christian ministry.

The scholarship honors the occasion of Mr. Hardee's retirement from the active ministry of the United Methodist Church. From 1933 until his retirement in 1973 he served churches in Greensboro, High Point, Climax, Troutman, Stoneville, Gastonia, China Grove, Granite Falls, and Mocksville.

When completely funded, the scholarship will allow awards of approximately \$1,000 a year. First preference will go to a student, or students, planning to serve in the Western North Carolina conference of the United Methodist Church. The recipients are expected to continue their preparation for the ministry beyond the baccalaureate degree in a recognized divinity school.

DR. MURPHY M. OSBORNE, vice president - student personnel, has been named Commissioner of the Carolinas Intercollegiate Athletic Conference. The post was formerly held by H. C. Hawn. Members of the Conference include Atlantic Christian, Catawba, Elon, Guilford, Mars Hill, Pfeiffer, and High Point College. Wilson Rogers, associate professor of business administration and economics, was elected secretary of the Conference at the same meeting in August.

FALL ENROLLMENT at High Point College is about 1,007; final figures will be available later in the fall. Admissions officers point out that the College has maintained its standards for incoming students and, as a consequence, has fewer students than if admission standards had been lowered. Alumni are being asked to assist in finding prospective students for future years. If an alumnus uses the coupon in this issue of HIGHPOINTS, the prospective student who sends in an application will have the customary \$10 fee waived. The primary object of the returned coupon is not merely to save the \$10 for the prospective student, but to urge Alumni to assist in maintaining the high standards of the College.

The College follows the "selective" philosophy of admissions, admitting only those students who have a probability of graduating. The College's enrollment in recent years has remained stable between 1,000 and 1,100 students.



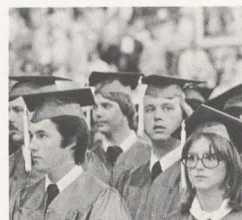
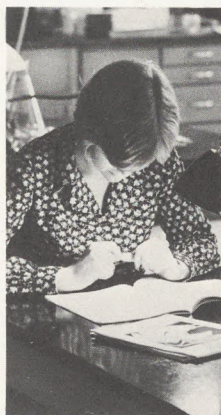
# HIGHPOINTS

Published six times annually by High Point College,  
933 Montlieu Avenue, High Point NC 27262.  
Subscription \$1. per year payable by the College.  
Send change of address to above mailing address.  
Raymond A. Petrea, *Editor*  
Robert E. Williams, *Director of Alumni Affairs*

Volume 53, No. 5, October 1977

Second Class Postage Paid  
High Point, N.C.  
27262

MISS MARCELLA CARTER  
LIBRARY  
CAMPUS MAIL



## Who Will Own Your Property Next?

Most of us spend a lifetime working toward financial security and independence. During the early years of a career, there is often a struggle to pay the bills and simply be free of debt. Many people are not able to see that an estate is being accumulated. Through the years as a house is paid for, insurance purchased, retirement plans secured, and some kind of investments are made, even a person of modest means can accumulate a valuable estate.

It is not uncommon for a middle-aged career person, man or woman, to have an estate valued at \$20,000 or \$50,000, maybe \$100,000 or more. Particularly for people who have varied financial interests such as a savings account, retirement programs with a contribution scheduled each month, life insurance, and stock purchase programs, it may not be readily apparent that an estate is this large.

But if a sudden liquidation into cash values of a person's entire estate were required, the sum total of the assets might be far more than one would suspect.

Taxes on an estate are quite high; at least, this is the feeling of most middle-class Americans who have been involved in an estate settlement. One thing should be clearly understood — both the State and Federal governments levy a tax directly on an estate at

the time of final settlement. The tax is not on the heirs, as a so-called "inheritance tax;" it is levied on the estate.

The only way to avoid a large estate tax is for the owner of the estate to make a will. The lawyer's fee required for a properly drawn will is the best investment a businessman or woman will ever make. In the light of the consequences of settling an estate without a will, it is also the smallest. Changing tax laws make it almost mandatory that expert legal and financial advice be sought.

The original owner can choose through a will who will be the next owner of the estate and its properties. Without a will, the State will make the choice. In most such cases, the loved ones will receive a much smaller portion of the estate.

Through the years, the College has been thoughtfully remembered by former students and friends who recognize the perpetual value of education. Their estates have provided living memorials of their thoughtfulness and generosity toward the next generation. The College Affairs Office is ready to assist any alumni or friend of the College considering how to remember the College in a will.

---

---

---

you can  
help HPC  
with  
your stamp

# High Point College

The Alumni Office  
High Point, North Carolina 27262

\_\_\_\_\_  
 \_\_\_\_\_  
\_\_\_\_\_  
\_\_\_\_\_  
\_\_\_\_\_  
\_\_\_\_\_  
\_\_\_\_\_

**Do you or your spouse work for a Matching Gift Company? If so, be sure to notify your company's personnel department so that your contribution will be doubled.**

## HIGH POINT COLLEGE ANNUAL GIVING PROGRAM

Please make check payable to High Point College. Amount enclosed \_\_\_\_\_

Name \_\_\_\_\_ Class \_\_\_\_\_

Maiden Name \_\_\_\_\_

Address \_\_\_\_\_

Employer \_\_\_\_\_

Indicate if spouse attended High Point College and is to receive joint credit for gift. \_\_\_\_\_

Class \_\_\_\_\_

Please mark one box below:

Unrestricted gift       Scholarship Fund (Name) \_\_\_\_\_

Gifts constitute a deduction under Income Tax laws.  
WRITE information for Class Notes of HIGHPOINTS below,