

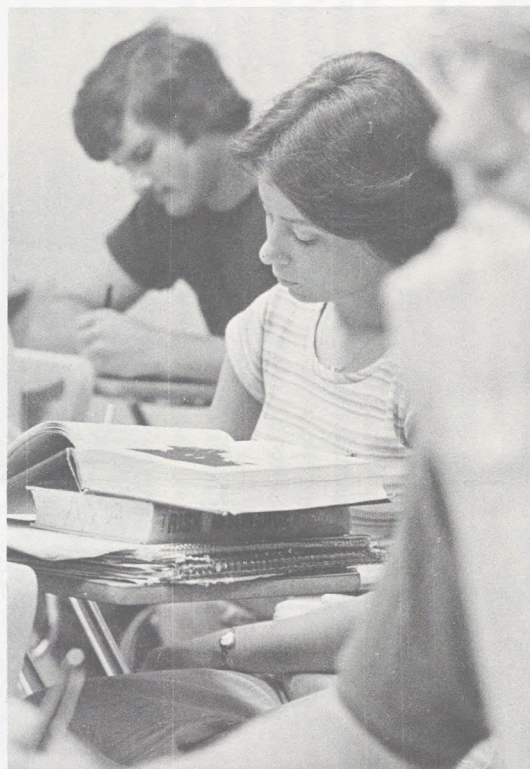
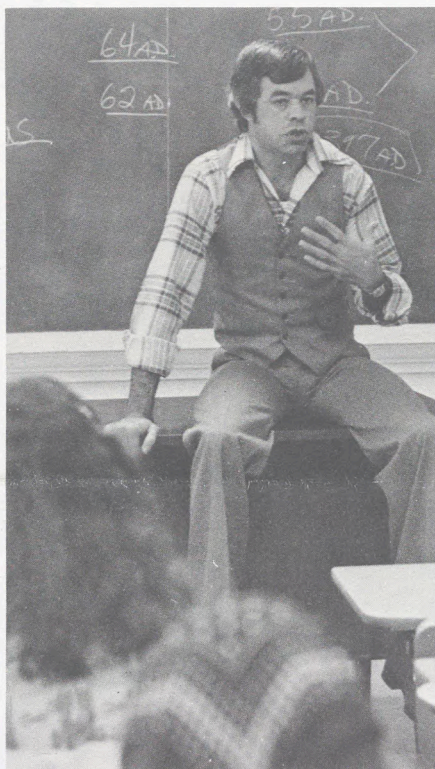
HIGHPOINTS

Second Class Postage Paid
High Point, N.C.
27262

Published six times annually by High Point College,
933 Montlieu Avenue, High Point NC 27262.
Subscription \$1. per year payable by the College.
Send change of address to above mailing address.

Raymond A. Petrea, *Editor*
Robert E. Williams, *Director of Alumni Affairs*

Member
Council for Advancement & Support
of Education



TODAY'S STUDENTS and future generations of students will reap the benefits of gifts to the Annual Fund.

Generous giving suggests success in Fund

ALUMNI CONTRIBUTED \$57,000 to the Annual Fund by the end of December to top last year's giving of \$42,000 on the same date. The total represents gifts from 583 alumni, 150 more than the number of contributors at the same time last year.

Goal for the Annual Fund is \$78,000 for support of the Alumni Chair of Higher Learning, the Golden Decade capital expansion, and scholarships. All gifts are invested in a permanent endowment and only the returns are expended.

All alumni are currently receiving letters from Art Bookout '39, national fund chairman, and the class chairmen. Included with the mailing is a folder pointing out that the value of a degree from High Point College is directly related to the current strength and vitality of the College. Alumni gifts are

an important source of financial strength for the College.

Gordon "Yogi" Yarborough '64, chairman of Advanced Giving, has contacted numerous alumni in a special plea for leadership giving. Yogi said he believes High Point College is one of the financially soundest private and church-supported colleges in the state. "This position has been maintained because of good planning, good investments in people and the loyal support of its alumni," he said.

In addition to a check for the Annual Fund, alumni are encouraged to send personal news to be shared with fellow classmates. News about alumni in the HIGHPOINTS is usually gathered from information included with gifts to the Annual Fund.

The annual drive will close on May 31.

HIGHPOINTS

Volume 54, No. 1, February 1978

Carnegie foundation report not true for High Point College

by DAVID PERRY

Enterprise Sunday Editor

ALTHOUGH A CARNEGIE FOUNDATION report says that general education at most U.S. colleges is a "disaster area," conditions at High Point College are far from perilous.

That message was emphasized recently by College officials who were concerned when they read news accounts of the Carnegie Foundation's report. The officials responded to the report and discussed the state of the College's general education program in an interview.

The officials did not disagree with some of the report's conclusions, but said they don't feel some of the conclusions should be applied to High Point College.

Asked for his response to the report's assertion that general education is a "disaster area" at most U.S. colleges, Dr. Roy Epperson said: "I don't disagree with (that statement) with respect to many campuses; I do disagree with it with respect to High Point College.

"Throughout its history," Epperson continued, "High Point College has required English grammar and composition, and until 1971 required mathematics."

Epperson, assistant dean of the College, and chairman of the educational policies committee, was joined in the interview by Dr. Richard Bennington, head of the Earl N. Phillips School of Business, and Terry Dunn, resident administrator of the College's American Humanities program.

Epperson described the general education program at the College as "adequate to the present needs of our students." But he acknowledged that there are those who feel the requirements could be stricter.

"There are members of our faculty who feel we should have very rigid requirements which all students take, such as a requirement in history, European civilization, for example, or a requirement in psychology, or a requirement in business principles," Epperson said.

None of those courses are presently required of all students at the College. Courses that are required include courses in English, religion, physical education, and foreign language. In addition, students are required to select courses from each of these four areas; arts and literature, behavioral science, foundations of civilization, and science and mathematics.

In its report, released earlier this month, the Carnegie Foundation for the Advancement of Teaching said that courses in English and mathematics — two areas in which many students entering colleges need help — are especially neglected.

The percentage of colleges requiring all students to take English courses dropped 18 points from 1967



TO HELP BRIDGE the gap between classrooms and careers, the College sponsors an annual Career Day. Representatives (above) from numerous businesses, agencies, or graduate schools make them-

selves available to discuss the future with students. Job possibilities, appropriate training, and career qualifications all receive attention.

to 1971, when it was 72 percent, and the percentage requiring a foreign language dropped from 73 to 53, the report says.

The report, the result of 2½ years of preparation, said a growing number of colleges are "giving the students whatever they want" in terms of courses.

Epperson noted that although High Point College has not required mathematics since 1971, many students are still taking mathematics courses.

"We're now in a study of the general education requirements," Epperson said, "and the preliminary study indicates that 80 percent of the students are choosing mathematics . . . and 80 percent are choosing laboratory sciences."

Epperson said the number of students registering for math courses has not dropped since math has not been required. "We're serving the same number of students," he said.

The officials acknowledged that High Point College, like many other colleges, has a number of students who need help with English and math skills.

Epperson estimated that approximately 10 percent of the incoming freshmen are required to take developmental reading courses and estimated that about the same percentage of students will be required to take a developmental algebra course when it is taught beginning next year.

The Carnegie Foundation also said that colleges should offer more work-study programs. "For many (students)," the report said, "integration of education and the world of work does not really

begin until after they graduate."

Does High Point College need to offer work-study programs?

"I'm not convinced we need any more than we presently have," Epperson said. "We have them now involving the sciences, human relations, the American Humanities program, business programs . . ."

For the past several years the College has offered a program called SCIP (Student Career Internship Program) designed to give a student the opportunity to "play the role of regular employee before graduation from college."

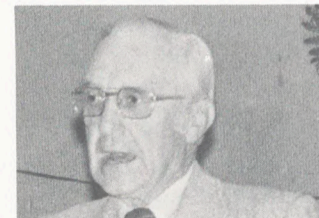
Dr. Bennington said the program was established because "we realized there needs to be a link between the academic atmosphere and the world of work. A student has very little opportunity in the classroom to see what it's like out there."

Bennington said he feels the program has been successful, and will become even more successful in the future.

SCIP is not the only program at the college that provides work-related experience.

The human relations program supported by American Humanities, a national non-profit leadership program, offers a number of "recommended experience electives." Beginning in the fall of 1978, an electives introductory course in voluntary organizations will require that students spend at least one hour per week in a voluntary organization in the High Point area.

More than 300 leaders at annual Trustee prayer breakfast



THE PLATFORM PARTY for the seventh annual College-Community Prayer Breakfast, sponsored by the Trustees, included trustee chairman Charles E. Hayworth, President Patton, High Point Mayor Roy B. Culler Jr., Dr. Ralph H. Taylor, retired Methodist minister, and Sister Mary Raymond Coughlan, Maryfield Nursing Home Administrator. Dr. James Elson led the assembly (left) in singing familiar Christmas carols. Speaker was Bishop Paul Hardin Jr., retired, former minister of Wesley Memorial United Methodist Church. He was introduced by Mrs. George Lyles, a long-time friend of Bishop Hardin and a member of the College's Board of Visitors.

Trustee Chairman Hayworth named Citizen of Year

CHARLES E. HAYWORTH, President of Alma Desk Company and chairman of the College's trustees, was selected High Point's Citizen of the Year for 1977 by *The Enterprise*. The announcement was made on January 1, 1978.

He was cited as the chief executive officer of High Point's largest employer, president of the largest wood office desk manufacturer in the world, for his service on the Board of Governors of the Research Triangle Institute, and as a board member of the Southern Furniture Market Center, High Point Memorial Hospital, Wesley Memorial United Methodist Church, and numerous other civic organizations.

His work with the College received special attention in the citation. "He has been particularly instrumental in a leadership role as vice chairman and now chairman of the Board of Trustees. His work as a member of the executive and finance committees has been credited with being instrumental in establish-

ing the financial security of that institution. With the help of his family, he built the chapel at the College now named in honor of his father, Charles E. Hayworth Sr."

With time out for service in the Army during the second



Charles Hayworth

World War, Hayworth took the family business after graduation from N.C. State University in 1936. He assumed leadership of Alma Desk in 1950 and has since enlarged Hayworth Industries to include Clarendon Industries, Liberty Veneer Co. and Myrtle Desk.

Gifts from Blackwell, Johnson, Reynolds Foundation

THE COLLEGE HAS RECENTLY received three outstanding gifts from an individual, an estate and a foundation. All three gifts are a direct benefit to student support.

Mrs. Bessie Smith Blackwell, Reidsville, has established a scholarship as a memorial to her husband, Roland A. Blackwell. He was a lifetime resident of Rockingham County.

Annual income from the fund will provide a minimum of \$350 in scholarships for worthy students at the College. First preference will go to ministerial students.

A previous grant from Mrs. Blackwell in 1976 increased the B.C. and Alice Barber Smith Scholarship which she and her sister, Miss Edith Smith, funded to memorialize their parents.

In receiving the gift, Dr. Wendell Patton said the College is "most grateful" to Mrs. Blackwell for establishing the scholarship.

The College has received \$35,900 from the estate of James T. Johnson, Greensboro, for the James Thomas and Mary Clegg Johnson Scholarship. Income from the fund will provide a minimum of \$2,500 annually for scholarship grants. Still additional funds will be received at the closing of the estate of Mary Clegg Johnson.

Dr. Patton said this "wonderful expression of support" by Mr. and Mrs. Johnson was all the more interesting because the Johnsons had no direct relation to High Point College but became interested because of the College's affiliation with the United Methodist Church. (College Place Methodist Church, Greensboro, was also a beneficiary of Mr. Johnson's will.)

Dr. Patton said the bequest was an excellent example of "an individual who understood the importance of a will and who kept it current to meet changing needs."

The Z. Smith Reynolds Foundation, Winston-Salem, has made the final payment of \$25,000 to complete the \$100,000 gift to the Golden Decade Fund. Income from the fund will support the Human Relations program. Dr. Patton expressed his "deep appreciation" for the generous support by the Foundation and its continuing interest.

"At a time when many foundations have discontinued the funding of endowed programs, it is most gratifying that this Foundation continues to be sensitive to the need for endowment grants," Dr. Patton said.

Plans ready for Homecoming

PLANS ARE ALL MADE for Alumni Day on February 10. Formerly called Homecoming, the Day will mark the 25th Anniversary Reunion of the Class of 1953 and the 50th Anniversary of the Class of 1928.

Members of '28 will be the luncheon guests of Dr. and Mrs. Wendell M. Patton in the private dining room, Holt McPherson Campus Center. Other reunion classes (this is the year for classes ending in 8 and 3) will have Dutch treat luncheons at restaurants in the area.

A Memorial Service for alumni and friends of the College who have died since last Alumni Day will be held at 11:30 a.m. in the Chas. E. Hayworth Sr. Memorial Chapel.

After a variety of afternoon social hours, all Alumni will be guests of the Pattons at a reception in the Campus Center. The Day will end with the banquet in the Cafeteria and the crowning of the Alumni Day Queen during the halftime of the Catawba College-High Point College basketball game.

Parents Day

March 4

Plan to Attend

Ten-year report shows growth and stability of College

THE COLLEGE'S ENDOWMENT, plant book value and income from student fees has doubled in the last ten years. Gifts and grants have more than doubled and income from the endowment has quadrupled in the same period.

These and other earmarks of growth were noted in Dr. Wendell M. Patton's annual report comparing the state of the College in 1977 to ten years ago.

In releasing the report, Dr. Patton said the comparison was made because 1967 was the first year the college budget exceeded the \$2 million mark. Founded in 1924, the College took 34 years — until 1960 — to reach a budget in excess of one million dollars. The budget reached two million just seven years later.

The book value of the campus and buildings, 75 acres with 25 major buildings, has increased from \$4.7 million to \$8.3 million in 1977.

Facilities constructed or improved include the Horace Haworth Hall of Science, 1967, the Mary Irwin Belk Dormitory, 1968; the renovation of Cooke and Roberts Hall, 1969; a maintenance building, 1970; the Holt McPherson Campus Center and the Chas. E. Hayworth Sr. Memorial Chapel, 1972. Two tennis courts have been added, a new entrance way built, several parking lots were paved, and various equipment has been added.

The major acquisitions during the period have been the Eastgate Shopping Center and the downtown "Magic Block." Stores and shops in the Eastgate Center are leased to a variety of tenants while the Magic Block property is occupied solely by Sears, Roebuck and Co.

The cost of the College's major activity, providing classroom contacts between students and professors, has doubled, up from \$1,042,494 to \$2,071,337. The largest amount of the educational and general expense is salaries for faculty members. As the College moves toward a ratio of one faculty member per twenty students, there are two fewer professors and instructors in 1977 than the 60 who were teaching at the College in 1967.

At the same time, the proportion of faculty members who hold the doctoral degree has had a sharp increase. Ten years ago only 37% of the faculty held

a terminal degree; now, 52% have an earned Ph.D or other doctoral degree.

The most significant increase, according to Dr. Patton, is the amount of funds in the endowment. Endowment funds are invested and the College receives the income while keeping the endowment intact. Ten years ago, High Point College had \$2,034,238 on hand in the endowment. By 1977, the fund had grown to \$5,383,079. Much of the increase was due to the success of the Golden Decade fund, a long-term capital expansion campaign completed in 1974.

Income from students has doubled, up from slightly more than \$1 million to \$2,071,337. As in practically all other institutions of higher learning, student fees provide only a percentage of the operational and educational costs. Student fees at High Point College have traditionally provided an average of about 75% of the costs.

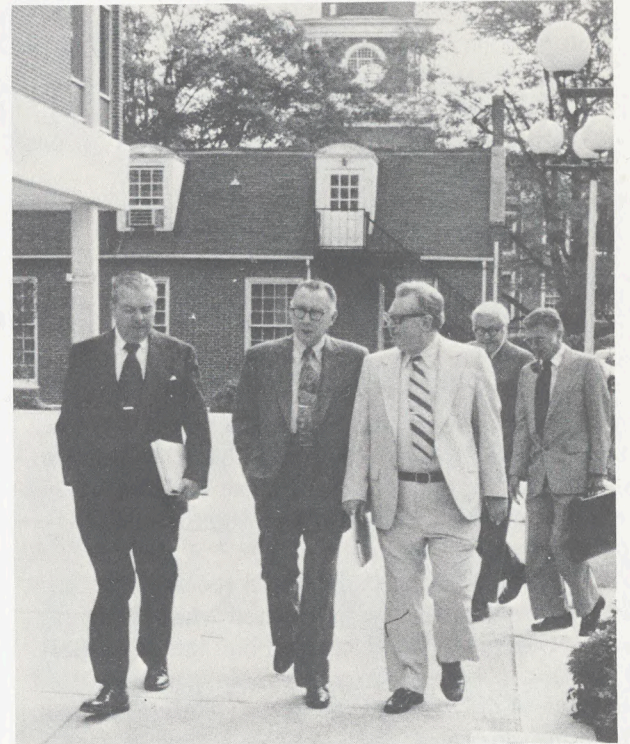
Remainder of operating costs comes from the endowment and the gifts and grants contributed by individuals, businesses, corporations, foundations, and other benefactors. The College received a total of \$270,517 in gifts and grants in 1967. By 1977, the outside support had grown to \$776,562.

Indebtedness has also had a dramatic increase. In 1960 the College had debts of slightly more than a half million dollars on capital improvements. "This is long-term indebtedness," he said, "being served at very reasonable interest rates, generally between three and four percent."

"The College has no current operating indebtedness," Dr. Patton said.

Student enrollment in the period has been maintained at slightly more than a thousand students. Current enrollment is 1004. In 1967, 35% of the students were from out-of-state. The figure has increased to 46.2 percent.

In looking to the future, Dr. Patton said the College is making plans to provide a new learning resource facility. "Wrenn Memorial Library has served us well," he said. "Now we must look to additional services, programs and space." The board of trustees of the College is considering plans for a new library facility.



AN IMPORTANT PART of the financial stability of the College is the leadership provided by outstanding trustees. Walking with Dr. Patton to a recent meeting are (left) trustee vice chairman Roger Soles, president of Jefferson-Standard Life Insurance Company; and trustee chairman Charles Hayworth, president of Alma Desk Company.

Alumni to help Admissions

AN ALUMNI-ADMISSIONS COORDINATING COUNCIL will assist the Admissions Office of the College in contacting prospective students and relating the advantages of a High Point College education. Based on current experience, all parties expect good results.

Members of the Council are Rita Ward Needham '55, Thomasville; Dell Conrad Johnson '61, Winston-Salem; Gart Evans '75, Greensboro; and Gordon Yarborough '64, and Lyles Kearns '50, both of High Point. The Council was appointed at the December meeting of the Alumni Association Executive Committee.

Arvil E. Von Cannon, director of admissions, and Larry B. McCauley, admissions counselor, gave a current report of the work of the admissions department. Their report indicated that alumni could play a key role in maintaining a full enrollment at the College.

The Council will bring together the work of the Admissions Office and individual alumni in designated areas where help is needed in meeting prospective students and answering their questions. Alumni may be especially helpful in staffing College Night programs; representatives from dozens of colleges set up booths or tables in a gymnasium or auditorium for inquiries from graduating high school seniors.

Alumni can assist in personal visits, phone contacts, and in making direct referral of prospective students to the Admissions Office.

Von Cannon said an important part of the "message" is that High Point College can compete with the cost of state-supported institutions. "With our automatic \$300 North Carolina Tuition Grant and our excellent program of financial aid, students can afford to attend the College," he said. "Some students who would like to come here never inquire because they think our cost is prohibitive. But if our alumni can persuade these students to make inquiry, they will see they can afford us," he said.

The Admissions Office has received about 50 applications from prospective students recommended by alumni. Since October, each alumnus has received an application blank to be handed to a graduating high school senior. If the alumnus recommends the student, the \$10 application fee is waived.

Von Cannon said the admissions picture for fall 1978 is "bright." One of the reasons for the successful recruiting program is the assistance of alumni, he said.



STUDENTS have unlimited seconds in cafeteria line for every meal.

Festive meals featured by college cafeteria

CHRISTMAS DINNER FOR 650 guests (students and faculty) was routine in the College food service, directed by Frank Caulfield.

The menu required 168 pounds of turkey, 650 steaks and 70 pumpkin pies plus "big cans" of instant potatoes, milk, butter, candied sweet potatoes, shrimp cocktails, peas, corn, mushrooms and onions for the steak, a full salad bar, hot rolls, fruit bowl, dressing for the turkey and mincemeat pies. As always, ice cream was available from the machine in the dining room in Holt McPherson Campus Center.

Caulfield came to High Point College in 1967 after a 24-year career in the Navy. He started his career in food services as a mess cook aboard a submarine. "In those days you had to peel the potatoes," he said recently, "not just open a can."

His duty tours included service on some of the oldest subs and some of the "very newest and most modern of them. You have to like submarines to last that long. It was really bad on the old ones with

small, tight quarters, but the new ones are fabulous," he said.

The College food service requires 28 full-time employees plus the students who serve the food in the line.

Caulfield makes very effort to break the natural monotony of institutional food. He has a "special night" once a month, such as Italian night, or Hawaiian food or Chinese dishes. The cafeteria is decorated in the appropriate motif for each occasion. Students assisted in decorating the dining room for the Christmas dinner with strings of colored lights, greenery, wreaths and cut-out letters for "Merry Christmas."

Red and green tablecloths, candles and dim lights overhead completed the setting. Members of the College choir sang carols during the meal. "The choir ate first," Caulfield said.

He tries to run the operation, as expected of a veteran sailor, "like a taut ship." He is also proud of his employees. "Everybody knows his job and does it well," he said.

Alumni Day
February 11

Alumni lead girls' basketball teams in area schools

HIGH POINT COLLEGE has developed a tradition for turning out talented women's basketball players. Probably few people realize the schools has developed an equally impressive reputation for turning out girls' basketball coaches.

The principals and athletic directors in the High Point area must think so anyway, because no fewer than 14 girls' basketball coaches have diplomas from the College.

One is a head coach at a university, eight at high schools and three more at junior highs. High Point College seems to be something of a coaching factory.

Debbie Leonard '74 became head coach at Duke University this year. She's the only High Point College graduate directing a women's team at a major college.

But the high schools have been infiltrated by High Point College alumni. Pat Hester '59 at High Point Central and Brenda Jo Thomas '65 at High Point Andrews have the most coaching experience of the eight.

Two more head coaches came from the class of 1973. Tanya Holley guides the team at Ragsdale,

and Emily Millis Hiatt directs Trinity's varsity squad.

Others at the helm include Micki Tuttle '68 at Western Guilford, Bobby Suggs '60, the only male coach in this line-up, at Thomasville, Wanda Wilson Cline '77 at Westchester Academy, and Debbie Madden '76 at Parkton near Lumberton.

High Point College graduates now head coaches at junior high schools are Jackie Silar '74 at Northeast, Sue Swigart Shinn '70 at Griffin, and Wanda Walton '77 at Kernersville Wesleyan.

Sharon Glover '77 also coaches the junior varsity girls' basketball team at Northeast while Wanda Howlett Hinkle '68 coaches girls' volleyball at the school.

Debbie Johnson '77 is an assistant varsity coach at High Point Andrews high school.

"We're thinking about starting a concentration in coaching," Sports Information Director Woody Gibson said. "We don't actually have minors here — we have a major and an area of concentration."

"Some high schools are overcrowded with physical education majors. So this would give someone a chance to major in something like math and still be



Debbie Leonard, head coach at Duke U.

able to coach. It'd probably involve courses like theory of coaching under Coach Chuck Hartman and Coach Jerry Steele, first aid and six-hour independent study with a high school coach."

Dr. Alan Patterson, chairman of the physical education department, said, "Right now it's one of the things we're considering. I think it would give people the background to coach intelligently and safely, but at this point we're just considering it."

Whether the proposal becomes a reality or not, the College will probably still enjoy its unwritten yet reciprocal agreement with the high schools. The College feeds the area coaches, and the high schools feed the college players. That's not a bad deal at all, as long as basketball stays strong here.

Thanks to Sarah Sue Ingram for this article published in the High Point Enterprise Dec. 28, 1977.



COACH JERRY STEELE (above) came to High Point College in 1972 after successful careers with Guilford College and the Carolina Cougars. Wanda

Briley, women's basketball coach, came last year to take the post vacated by Jennifer Alley.

Volleyball team goes to national tournament

by **WOODY GIBSON**

Sports Information Director

THE VOLLEYBALL TEAM at the College concluded its most successful season this year with a second trip to the national tournament. The Lady Panthers compiled a 41-10 record while winning the Carolinas Conference, State Division II and Southern Region II titles for the second straight year.

The Panthers were led by All-Conference selections Marie Riley, Roberta Riley and Karen Christoffersen. Marie Riley, sophomore, was selected as the conference Player of the Year for the second time. Riley, Christoffersen and Ethel White were selected to the All-State team, one which was picked for the first time this year.

Head coach Wanda Briley said after the season, "We were disappointed that it ended this way but in looking back, we had a great year. We're already looking forward to next season."

On the basketball scene both teams have had rocky beginnings but have an optimistic outlook for the remainder of the year.

Jerry Steele, men's basketball coach, said when his Panthers were 6-5 on the season, "We're playing the toughest schedule ever at High Point and are starting a junior, three sophomores and a freshman. They are going to make mistakes but we're learning from them every night."

Panthers had a four game winning streak to open the season. Those wins included victories over Flagler and Florida Institute of Technology in the F.I.T. Invitational season opener in Melbourne, Fla. Then came wins over a tough Ft. Bragg team and a high scoring win over Barber-Scotia. Sophomore center John O'Brien was the leader during that stretch, scoring 33 points against Barber-Scotia. The wins were followed by a loss to always tough Winston-Salem State on the Rams homecourt and a disappointing 112-106 loss in overtime to Atlantic Christian.

O'Brien led the Panthers to their first conference win over Elon, scoring 35 points and pulling in 20 rebounds. Next came 47-point romp over Ft. Bragg. Prior to the Christmas break, Guilford traveled to

High Point and was able to come away with a 94-87 overtime win.

After the holiday the Panthers went to Gardner-Webb for the annual Classic. The Panthers lost to an experienced Lenoir-Rhyne team, then dropped a highscoring 114-95 decision to the nationally third-ranked Bulldogs of Gardner-Webb.

A bright spot for the Panthers during the second half of the season will be the emergence of Charlie Floyd, a 6-7 transfer from Wake Forest. Floyd, a two-year starter for the Deacons, was Player of the Year in Philadelphia during his senior year in high school. He became eligible on January 6.

On the women's side of the basketball front the Lady Panthers have had their share of ups and downs. With just four days of practice after the volleyball season began, the Panthers lost to a red-hot team from Pfeiffer, the first regular season loss for High Point in three years. Then came wins over Wake Forest, College of Charleston and the University of North Carolina. The Panthers ran into the nationally-ranked Wolfpack from North Carolina State, losing in the finals of the Carolina Christmas Classic.

First-year coach Wanda Briley mused about the season, "We really haven't had a chance to practice together much with eight of the girls playing volleyball also. We have been ragged but I think that in time we can have an outstanding team. We surely have the toughest schedule ever."

The Panthers returned from the Christmas holidays with a trip to N.C. State followed by a visit to Norfolk, Va., and a tournament with Old Dominion, Wayland Baptist and Montclair State. All three schools are ranked in the top five in the nation among the Division I teams.

Both basketball teams will be pointing for the Carolinas Conference tournament, the climax of the season. For the first time both the men and women's tournament will be played together in the Winston-Salem Coliseum.

WGHP-TV in High Point will televise the finals of both tournaments on Friday, March 3 at 7 and 9 p.m., another "first" for the Carolinas Conference.

Courses varied in Interim

STUDENTS TOOK ONLY one course during the interim, choosing from a wide variety of on-campus and off-campus classes and trips.

One of the new courses was a study of death and dying, team-taught by Dr. Vance Davis and Mr. William Cope. 65 students signed up for the three week study. Special guest speakers included a medical doctor, a funeral director, a minister, and persons with experience in dealing with the terminally ill.

Twenty-five students spent a week at Mt. Shepherd Retreat Center, near Asheboro, to study the relation between religion and the sciences. Sub-committees of students alternated between special preparation for the discussions and kitchen duty.

Out-of-town groups included tours of the Wall Street financial district in New York City; the art treasures of Italy; cultural landmarks and institutions in London, Amsterdam, Munich, and Paris; a music tour of Washington, D.C.; and a Spanish-speaking tour of Mexico's major points of interest.

Scholarships for Day Students

GRADUATING HIGH SCHOOL SENIORS and community college graduates who commute to High Point College are eligible for a new \$300 scholarship established several weeks ago.

"This program of financial aid to day students is our turn to do something for the people in the community," admissions director Arvil Von Cannon said in announcing the new awards. "We feel the College has been a vital part of this area and this is our effort to be of maximum assistance to our neighbors."

Awarding of the scholarships will be based on academic standing, participation in extra-curricular activities, and leadership potential. Recipients of the scholarship may also apply for additional aid from the College as well as the N.C. Tuition Grant.

The first awarding of the scholarship will be made for the 1978-79 academic year. Interested students should contact the Admissions Office or request an application from a guidance counselor.

Von Cannon said that the College maintains an adequate enrollment of dormitory students; since day students occupy only classroom space, the number of day students could be greatly increased without a strain on the college facilities.

Give to the Annual Fund.

HIGHPOINTS

Second Class Postage Paid
High Point, N.C.
27262

Published six times annually by High Point College,
933 Montlieu Avenue, High Point NC 27262.
Subscription \$1. per year payable by the College.
Send change of address to above mailing address.

Raymond A. Petrea, *Editor*
Robert E. Williams, *Director of Alumni Affairs*

Member
Council for Advancement & Support
of Education

Annual Fund supported by alumni and friends

ALUMNI CONTINUE to support the Annual Fund with more contributions and larger contributions than last year. The total contributions to the Fund were slightly in excess of \$75,000 by the first week in March.

To date, 757 alumni have responded to the annual call for support of the College. Officials of the fund hope to see more than 1,500 contributions made by the time the fund closes on May 31.

Advanced giving is also higher than at the same time last year. To date, 288 advance gifts have been received for just over \$30,000. The advance contributors are recognized with membership in one of the Distinguished Gift Clubs.

Contributors of \$1,000 or more are recognized as members of the Fellows Club. They receive a walnut shadow box showing the name of the donor on a copper plaque.

Membership in the Lamplighter Club is indicative of a contribution of \$500 or more, and members receive a coaster set with the name of the donor on the box

holding the leather coasters.

Tower Club members contribute \$250, and Centurion Club members contribute \$100 to the Fund. As a token of the College's appreciation, they receive marble block paperweights bearing a white metal or copper plaque.

Friends of the College as well as Alumni may become members of one of the Gift Clubs upon appropriate contribution.

Fund officials are quick to point out that the gifts from Alumni and Friends actually form a part of the total endowment of the College. Gifts are not expended on the day-to-day operation of the College, but instead, are put on interest-bearing deposit and only the interest is spent. As a result, all of the monies contributed by Alumni in past years is still drawing interest and will continue to be a source of income. The interest is used largely for scholarships and other current needs of the College. The Alumni Chair of Higher Learning is supported by gifts from alumni and friends.



REPRESENTATIVES of voluntary community agencies from across the state came to the campus in January to review the college's human relations program. Graduates of the program qualify for professional leadership positions in youth-serving agencies. Dr. Patton (above) welcomed the representatives to the all-day meeting.

HIGHPOINTS

Volume 55, No. 1, March 1978

Alumni welcomed back with variety of campus activities



Occo D. Gibbs '38, (left) Burlington; S.L. "Monk" Hill '28, Graham; and Joseph W. Holmes '28, Burlington



Homecoming Queen Wendy Dunham, Miami, Florida, and escort Skip Granberry, Raleigh



Reunion luncheon for the Class of 1953



At the afternoon reception hosted by Dr. and Mrs. Wendell Patton



Silver Anniversary Banquet for Pi Kappa Alpha fraternity



Reunion luncheon for the Class of 1943

A BONFIRE in a parking lot, a dance in Greensboro, a memorial service, and the crowning of one of High Point's prettiest were all part of Alumni Weekend. Both students and alumni joined in a ceaseless program of activity running from early Friday evening until late Sunday evening, February 10 — 12.

The difficult winter weather seemed to snap apart to make way for a spring-like weekend; warm greetings and warm sunshine combined to make a delightful weekend for the 400-plus alumni and former students who returned to the campus for parties, programs, meetings and the Saturday night basketball game with Lenoir-Rhyne.

Miss Wendy Dunham, sophomore from Miami, Florida, was crowned Miss Homecoming at halftime of the game.

Students began the annual festivities with a bonfire on Friday evening and cheers for the team. Alumni, especially the graduates of recent years, joined students at a dance in Greensboro sponsored by the Student Union.

The earlybirds on Saturday morning went to the American Humanics Reunion Breakfast at a local restaurant, while the Alumni Executive Committee met in the Holt McPherson Campus Center for breakfast.

Highlights of the day included a memorial service for deceased alumni and friends of the College, class reunion luncheons, and a symposium sponsored by the psychology department.

Pi Kappa Alpha Fraternity held its silver anniversary banquet and reception at a local motel. Nearly two-hundred brothers and their wives — or dates — attended.

Dr. and Mrs. Wendell Patton hosted a reception in the Campus Center before the banquet. Sunday's schedule included the chapel service and a concert in Memorial Auditorium.

Estate assistance available

SUPPORT FOR THE COLLEGE is delivered in many forms. There was a time in the 1930s when truckloads of vegetables were brought to the campus to help feed the students; faculty received part of their pay in chickens one year.

Fortunately, most of the support received by the College today is in cash or assets easily convertible to cash. These alternate forms include stocks, bonds, insurance, real estate and bequests from wills.

More people than ever before are writing wills as they understand the vital need for estate planning. A few years ago only the very wealthy — and not all of them — planned for the final disposition of an estate. Now, tax and inheritance laws make it imperative that anyone who owns property — whether married or single, both men and women — should have an up-to-date will.

The College has many friends who have provided a thoughtful remembrance for High Point College in their wills. The future quality of education at the College is insured by the generosity of such friends.

Even the best of intentions can go astray, however. If a bequest in a will is regulated too narrowly, if a detailed criteria is set up for the final release of the gift, or if the College is required to meet certain strict guidelines in order to receive the gift, then the original intention of the giver may be defeated.

The division of College Affairs is ready to discuss estate plans with anyone who would like to include the College in the disposition of an estate. Such discussions would include the total College needs and how gifts can be planned to meet those needs.

As always, all contacts and conversations would be held in strictest confidence. Please feel free to call the College Affairs Division headed by Vice President Cletus H. Kruyer.

The Rev. Robert M. Hardee

THE REV. ROBERT MARION HARDEE, 74, died February 26 in Greensboro. He was a retired Methodist minister and the president of the Retired Ministers of the Western North Carolina Conference.

His sister, Mrs. Lucy H. Olsen, Durham, established a scholarship at the college last year in recognition of his retirement from the active ministry of the Methodist Church after 40 years. Mrs. Hardee taught public school for 30 years and retired in 1976.

Mr. Hardee's service included churches in High Point and Greensboro.

The scholarship will support students who are preparing for fulltime ministry. When completely funded, the scholarship will provide awards of approximately \$1000 per year, with first preference going to future ministers of the Western North Carolina Conference.



Alumni banquet set May 4

ALL ALUMNI ARE URGED to make plans to attend the Alumni-Senior Banquet at 7 p.m. on May 4 at the Top-of-the-Mart. The banquet will also be the annual meeting of the Association. Tickets will be \$5 per person at the door.

Speakers for the dinner will be Dr. Murphy M. Osborne, vice president for student affairs, a member of the class of 1958. He earned his master's degree from UNC and his doctor's degree from the Univ. of Tennessee.

ANGEL STREET, a Victorian gas-light thriller, was presented in Memorial Auditorium February 15-18, directed by Nan Stephenson. Roles were played by Dr. E. Roy Epperson; assistant dean, (left) and Myra Williams, Jamestown; and Don Wright, Asheboro; Robin Henson, Brevard; and Melissa Patton, High Point.



Reunion luncheon for the Class of 1938



At the Pi Kappa Alpha social hour

Greek-letter groups become more popular

FRATERNITIES AND SORORITIES at High Point College support a variety of "excellent projects" — and so does nearly every other fraternity and sorority across the nation.

Still, there is a national decline in membership of Greek-letter organizations. Dr. Murphy Osborne, vice president for student affairs at the College, attributes the decline to R- and X-rated movies, poor public relations, and news coverage of isolated incidents. A recent survey by the *Chronicle of Higher Education* newspaper showed only 17.3% of incoming freshmen last fall planned to join a college fraternity. The figures has shown a continuing decrease in recent years.

High Point College groups adopt a complete orphanage at Christmas, serve as "Big Brothers" to juveniles, tutor underprivileged city kids who are having difficulty in schoolwork, take over clean-ups of certain city areas, contribute money to a wide variety of causes and benevolent funds, and even have a project of reading to the elderly.

A fraternity has equal potential for good or bad, Osborne said. "The fraternities and sororities offer an unusually valuable opportunity for leadership development, and young men and women can learn through personal participation. The living conditions and organizational demands offer a learning opportunity which is difficult to duplicate in our ed-

ucational systems," he said.

There are constant reports of hazing and deaths related to fraternities. But, Osborne said, all national fraternities and sororities have gone on record against hazing and alcohol abuse.

"As is so often the case, these incidents are reported over and over while the good that the groups do seldom attracts widespread attention. The organizations simply don't sell themselves as well as they might," he said.

As for the X-rated movies, Osborne deplored the "high price" that sororities have paid for the way they are maligned by pornographic movies. "The typical sorority member is not a sex-star girl," he said. "Maybe a segment of the public believes X-rated movies show incidents that occur in sororities, but this is just not true.

"The same kinds of movies show fraternity men as far more sexually-oriented, or sexually-active than the average college student. All of this suggests . . . an attitude which is totally inaccurate."

Osborne saw signs of hope for the future. "Historically, as society becomes more liberal, fraternities decrease in popularity, and vice versa. With the new trend of conservatism on campuses across America, the popularity of fraternity life should increase," he said.

New book by Putnam '49

Reviewed by

ELIZABETH WILHOIT '73, Admissions Counselor

THOSE HE CAME TO SAVE, by Roy C. Putnam, Abingdon Press. \$4.95

THE REV. ROY C. PUTNAM '49 has published his fourth book. *Those He Came To Save* follows his earlier books, *In It To Win It*, *Life Is A Celebration* and *Getting It All Together*.

His latest book, published early this year, is an examination of the keynote address delivered by Jesus in Nazareth and recorded in Luke 4:18-19. (Jesus applied the prophecy of Isaiah, beginning "The Spirit of the Lord is upon me . . ." to himself when he was asked to read the scripture in the synagogue in Nazareth.)

Putnam's book shows that "Christ's spiritual blessings and goodness do go on today throughout our lives; and that just as Christ ministered to all classes of people in his day, so he lives and works in and through his church today to help all of us who are in dire spiritual, social, political, economical, ecological and financial need."

Putnam, in his 23rd conference year, is pastor of Trinity United Methodist Church, Greensboro. The church was born in the mid-'50s following a Billy Graham Crusade. It is known as a large and active congregation. Putnam is also featured on a weekly syndicated radio program, "The Trinity Radio Pulpit."

He speaks frequently at retreat and renewal programs as well as conferences throughout England, Canada and the United States.

TWO HUNDRED PARENTS came to the campus on March 4 to visit, get a glimpse of student life, hear various reports on the condition of the College, and to ask the faculty about classroom prog-

ress for their sons or daughters. A panel discussed the relation of science and religion at the College. Dr. Patton hosted a reception in the afternoon.



Summer Sports Camps

ALUMNI AND FRIENDS OF THE COLLEGE are invited to send their youngsters to the summer sports camps at the College in June and July. Not only will the instruction in the sport be valuable, but it will be a good opportunity to steer young people toward attending Alma Mater.

Instruction will be given in the fundamentals of tennis, soccer, volleyball and basketball. The physical education department is in charge of the program. Cost for boarding students is \$125 per week including room, meals, insurance and instruction. Day campers are charged \$75 for each week. Each camper must be at least 9-years-old by June 1.

College faculty and other qualified sports personnel will be the instructors. Registration blanks and more information are available from the physical education department.



"Daddy, guess what happened to my car last night . . ."
The campus has been hit hard by winter storms.

Jessica Mitford on Campus

JESSICA MITFORD, well-known for her books about the American funeral industry and the nation's prison system, said in a press conference on the campus in February that Gov. Jim Hunt's decision not to pardon the Wilmington 10 was an "example of a rising law and order sentiment sweeping the country."

She said it appeared Hunt reduced sentences for the "10" only to appease world opinion and did not go further because of law and order sentiment in the state. "The fact that they were not granted a pardon," she said, "is purely political and is an absolute disaster."

In her lecture in Memorial Auditorium later in the day, she said the basic problem of the American penal system is trying to devise a fair and equitable prison system in a society that is basically unfair. She suggested that offenders should make restitution to their victims rather than being incarcerated.

Alumni News '52

'37

Class Chairman: Mary-Margaret Bates Brown
Next Class Reunion — 1982
The Reverend J.S. HIGGINS, Kernersville, participated in a Methodist volunteer builders project in Puerto Rico during January.

Class Chairman: Robert B. Rankin
Next Class Reunion — 1983

Dr. MAX P. ROGERS, Washington, D.C., was featured in the January issue of *Southern Living* complete with picture and recipes for Brown Bread and Irish Soda Bread. Max is Medical Director of the Southern Railway System.

'39

Class Chairman: J. Allen Thacker
Next Class Reunion — 1979
Dr. AUSTIN C. LOVELACE, Denver, Colorado, Minister of Music for the Wellshire Presbyterian Church in Denver, has produced his fourth book *The Anatomy of Hymnody*. Austin is the featured speaker at the 1978 Smyth Lectures at Columbia Theological Seminary, Decatur, Georgia. The topic is "Words, Hymns and the Word."

'40

Class Chairman: Beverly E. Bond
Next Class Reunion — 1980
CLINTON R. CREW, Richmond, Virginia, is employed by the state of Virginia in public health.

'41

Class Chairman: Albert G. Earle
Next Class Reunion — 1981
Dr. W. JOSEPH MAY, Winston-Salem, associate professor of obstetrics/gynecology at Bowman Gray School of Medicine, has been reappointed chairman of the Committee on Maternal Health of the North Carolina Medical Society.

'45

Class Chairman: Ava-Neil Taylor Collins
Next Class Reunion — 1980
Dr. MEL HARBIN, Lake Junaluska, was elected Director of the Lake Junaluska Assembly last year by the Southeastern Jurisdictional Council of The United Methodist Church.

'49

Class Chairman: James F. Brewer
Next Class Reunion — 1979
PAUL WILLIAMSON, Durham, director of athletics for the Durham city school system, has been named North Carolina Athletic Director of the Year by the North Carolina High School Athletic Director's Association.
The Reverend ROY C. PUTNAM, Greensboro, is the author of *Those He Came to Save*, by Abingdon Press, Nashville. (See review of this book in this issue of HIGHPOINTS.) Roy is pastor of Trinity United Methodist Church, Greensboro.

'50

Class Chairman: George W. Thompson
Next Class Reunion — 1980
Dr. A. Craig Phillips, North Carolina State Superintendent of Education, has recently selected ROBERT J. MARLEY as his director of the division of compensatory education and a member of his executive council.

'51

Class Chairman: Murray M. White
Next Class Reunion — 1981
PAUL ARNOLD MITCHUM, JR., Charlotte, has been approved by the state board of certified public accountant examiners.

'52

Class Chairman: Garland E. Wampler
Next Class Reunion — 1982
MARVIN S. CALLOWAY, JR., Winston-Salem, is chairman of the Winston-Salem/Forsyth County Board of Education. He was featured in a recent issue of the *Winston-Salem Sentinel*.
M. FRANCES DEARMAN, Towson, Maryland, has been elected chairman of the Maryland Recreation and Parks Association Arts Committee for 1977-78.
T.S. HUTCHENS, Winston-Salem, has been elected trust officer of Wachovia Bank & Trust Company, N.A. He joined Wachovia's operations department in 1955 and transferred to the personal trust department in 1960 as a tax accountant.

'56

Class Chairman: Lorraine McCurry Griffin
Next Class Reunion — 1981
FAYE PEEDIN COLLINS, Burlington, teaches English to gifted and talented students at Graham High School.

'58

Class Chairman: Paul E. Moss
Next Class Reunion — 1983
ROBERT L. GATLING, JR., Atlanta, Georgia, has been elected president and chief operating officer of Hitchiti Land and Coal Company in Atlanta. He had served previously as executive vice president of the company.
J.L. ROBERSON, Greensboro, has been elected to the senior officer position of second vice president and manager, individual health administration, by the board of directors of Pilot Life Insurance Company.

'62

Class Chairman: Larry D. Wilson
Next Class Reunion — 1982
TALTON JERRY HARRISON, Trinity, has been approved by the state board of certified public accountant examiners.
WALTER SCHENCK, Englewood, New Jersey, is a field representative in the office of University and Young Adult Ministries in the National Division of the Board of Global Ministries of the United Methodist Church.

'63

Class Chairman: Donna Lawrence Staley
Next Class Reunion — 1983
FAYE FLOYD MARKS, High Point, is among the contributors to the October issue of *INSTRUCTOR* magazine. The title of her article is "Lunching with children creates friendships."

'64

Class Chairman: Frank M. Jarvis
Next Class Reunion — 1979
Dr. T. GREGORY MORTON, Tolland, Connecticut, was promoted to associate professor of finance at the University of Connecticut, effective October, 1977. Dr. Morton has recently published in a variety of academic and professional journals, including *The Journal of Finance*, *Financial Management*, and *California Management Review*.
CHARLES E. NESBITT, Asheville, has been named senior vice president to head The Bank of Asheville's trust division. Charles was formerly associated with First Union National Bank of North Carolina as vice president and senior personal trust development officer, a statewide responsibility. Earlier, he held trust positions in Greensboro, Winston-Salem, and Asheville.

Nesbett '64



'66

Class Chairman: Ned B. Owens
Next Class Reunion — 1981
PAUL N. BOONE, High Point, has been elected vice president of Wachovia Bank & Trust Company, N.A. Paul joined the bank's operations department in High Point in 1965 and became operations manager in 1966.
CAROL PINO DEWOLFE, Sherrill, New York, is working in a psychiatric day-treatment center and also as a community mental health nurse.
JEAN CAMPBELL KLINGE, Alexandria, Virginia, teaches first grade in Fairfax County.
CARLOS A. RIOS, Canton, Connecticut, has joined Pilot Life Insurance Company as second vice president and superintendent of agencies. He was formerly assistant director of associate member activity for the Life Insurance Marketing and Research Association in Hartford.

'69

Class Chairman: P. Scott Owen, Jr.
Next Class Reunion — 1979
ROBERT HENRY HOLLIDAY, Winston-Salem, has been appointed instructor in allied health (Physician Assistant Program) at the Bowman Gray School of Medicine of Wake Forest University. Holliday has completed certificate requirements of the medical school's Physician Assistant Program.
RONALD E. LOEWENTHAL, Chevy Chase, Maryland, as well as being president of Loewenthal, Walker, Heimberg, and Associates Advertising, also has equal partnership in a radio station WOHN, near Reston, Virginia. His wife, NANCY TAYLOR '68 is starting a miniature furniture design business in the home.
SHARON BAKER MILLER, McAllen, Texas, taught for three years in the McAllen Independent School District. Captain CHARLES C. ROCK, Puyallup, Washington, will be stationed in the Philippine Islands at Clark Air Force Base this fall, flying C-130's. He has been stationed at McChord Air Force Base in Washington for two years.

'70

Class Chairman: Richard H. Boyd
Next Class Reunion — 1980
CAL CRUTCHFIELD, Burlington, is employed by Alamance County in the mental health center as director of drug education program. He teaches part time in area high schools.
DAVID L. HOLTON, Lewisville, has been elected assistant vice president at Wachovia Bank and Trust Company in Winston-Salem. David joined Wachovia as a trainee in the Durham office in 1973 and became branch manager in 1974. He transferred to Winston-Salem as a retail operations manager for the retail banking department, his present position, in 1976.
DANIEL M. WITT, Kernersville, is basketball coach at Immaculate Heart of Mary school, High Point.

'71

Class Chairman: Beth Holcomb Sigmon
Next Class Reunion — 1981
JAMES E. PRICE, Arlington, Virginia, was selected Yorktown (Arlington County) High School's head basketball coach this year. He teaches math and physical education at Williamsburg Jr. High School in Arlington County.

'73

Class Chairman: David T. Wilson
Next Class Reunion — 1983
WALTER S. HILL, Concord, finished the Master of Divinity degree at Duke Divinity School, Spring of '76. He is serving as Associate Pastor, Central United Methodist Church, Concord.
ROBERT M. "BUDDY" McELVANEY, Arlington, Virginia, spent last summer on a 10½ week cross-country trip to California. Buddy is a tariff examiner with the Federal Maritime Commission (Federal Government) in Washington, DC.

Bash '75 Scholarship Fund

A SCHOLARSHIP FUND has been established at the College as a memorial to Michael M. Bash '75. The Fund was started with memorial gifts sent to the College at the time of Mike's death in Virginia last year. He was a graduate student at the University of Virginia.

The Scholarship will be used to assist deserving students who are majoring in biology.

As with other Funds at the College, additional contributions will enable the Michael Bash Scholarship Fund to serve more students; the College Affairs division will receive contributions at any time and will forward them as designated.

'74

Class Chairman: Bruce B. Tingle
Next Class Reunion — 1979
DEBORAH E. LEONARD, Durham, is the assistant field hockey coach and works in the sports information department at Duke University. Prior to her position at Duke, she was a physical education teacher and coach with the Davidson County Public Schools in Lexington from 1974-76.
TED MACKLIN, Atlanta, Georgia, is a field engineer with Graphic Sciences, Inc., a subsidiary of Burroughs Corporation.
EDWARD H. RHAME, Greensboro, has been promoted to district sales manager with Olney's Wallcovering of Greensboro. Previously he was located in Irmo, South Carolina.

IN MEMORIAM

PAUL DEAN ATWELL '58, Charlotte, August 2, 1976.

NAT G. BETHEA '35, Rocky Mount, May 18, 1976.

DONALD G. BRIDGER '54, Thomasville, January 22, 1978.

W. DARRELL BULLA '34, High Point, December 7, 1977.

ELIZABETH ANDERSON CLONTZ '47, Myrtle Beach, South Carolina, October 8, 1977.

CHARLES C. COFFEY '44, Kanapolis, September 19, 1977.

RICHARD N. DiTULLIO '48, Erie, Pennsylvania, November 30, 1977.

A. BURKE FURCHES '30, Winston-Salem, December 7, 1977.

WILBUR WALTER HUTCHINS '35, Sanford, February 23, 1978.

VERNON W. IDOL, JR. '32, High Point, November 22, 1977.

GLENN A. McCULLEY '49, Lake Junaluska, February 24, 1978.

LILLIAN BUCKER PHILLIPS '28, Greensboro, November 11, 1977.

SARA HARRIS SUMMERS '37, Greensboro, February 18, 1977.

JAMES A. THOMPSON '33, Reidsville, January 25, 1978.

'75

Class Chairman: Stephen L. Lawson
Next Class Reunion — 1980
WANDA ROSE CUMMINGS ELLER, Greensboro, is in her third year of teaching kindergarten at Alamance Primary School in Guilford County.
MACK ALLEN PICKETT, JR., Denton, has been approved by the state board of certified public accountant examiners.

'76

Class Chairman: Robert E. May
Next Class Reunion — 1981
BOBBY R. HEILIG, JR., Clinton, is district executive of Elangomat District, Boy Scouts of America.

'77

Class Chairman: Sid P. Baker
Next Class Reunion — 1982
SID P. BAKER, Goldsboro, is district executive of the Tuscarora Council, Boy Scouts of America.
THOMAS DUNN SIMPSON, High Point, has been approved by the state board of certified public accountant examiners.
DOUGLAS S. WITCHER, High Point, has been appointed as a sales associate with White & Wood, Inc. Realtors. Doug, a real estate broker, is a graduate of the Lee Institute of Real Estate.

MARRIAGES

JOHN ADAMS II '75 and Joanne Louise Cooper on September 24, 1977.

BARBARA BOLTON '77 and DAVID C. CALDWELL '76 on December 28, 1977.

JEAN A. CAMPBELL '66 and J. Kenneth Klinge on July 16, 1977.

Dr. EDWIN L. PLOWMAN and Marabeth Porter on December 17, 1977. (Dr. Plowman is assistant professor of sociology at High Point College.)

SUSAN ANNE WOODS '75 and CLYDE N. PERRYMAN '75 on January 20, 1978.

NEW ARRIVALS

A daughter, Sarah Burton, was born to Dr. and Mrs. Richard R. Bennington on November 27, 1977. (Dr. Bennington is head of The Earl N. Phillips School of Business at High Point College.)

A daughter, Bettina Louise, was born to Joe and PRISCILLA MAY BRANT '69 on February 8, 1978.

A son, Craig Arthur, was born to JOHN W. '74 and ROBBIN REYNOLDS DASHKAVICH '73 on September 12, 1977.

A son, Terrence Ian, was born to Mr. and Mrs. Terrence Dunn on January 12, 1978. (Mr. Dunn is the resident administrator of the American Humanics program at High Point College.)

A son, Roger Alton, was born to A. ROBERT '64 and DUANE THOMPSON HARTSELL '64 on November 24, 1977.

A daughter, Emily Elizabeth, was born to KURT D. '70 and BEVERLY BULLIN '70 on November 2, 1977.

A daughter, Lindsay Taylor, was born to Mr. and Mrs. ROBERT L. LOWERY '70 on December 8, 1977.

A son, Philip Scott, was born to C. Bruce and LAURA LENZ MacARTHUR '67 on July 19, 1977.

A son, Travis Howard, was born to GERALD A. '62 and PAULINE MOSS MORGAN on April 6, 1977.

A daughter, Margaret Brown, was born to Alonzo III and CARRIE WHITEHURST PARRISH '64 on October 1, 1977.

A daughter, Sarah Courtney, was born to Kenneth and NANCY LEFLER PERRINE '70 on December 10, 1977.

Panthers win it all in conference tournament



LEFT – Coach Wanda Briley receives the trophy from Commissioner Murphy Osborne. CENTER – Kitty Steele helped cut down the nets just after husband Jerry was named Coach of the Year. RIGHT – “We’re Number One.”

THE PANTHERS — MEN AND WOMEN — became the Carolinas Conference Champions by defeating Guilford College (men, 82-80) and Pfeiffer College (women, 81-71) on March 3 in Winston-Salem. Both games were televised on Channel 8, High Point.

The men, coached by Jerry Steele, took their first conference championship since 1969. The women, coached by Wanda Briley in her first year at High Point College, won their third-straight league crown.

Charlie Floyd, with 26 points and 20 rebounds in the championship game, was named the Most Valuable Player of the tournament. He and Danny Anderson, with 18 points, were named to the All-Tournament Team. Charlie transferred to High Point College this year after two years at Wake Forest.

On the way to the championship, the men beat Elon 60-59

in an exciting semifinal victory.

The women had lost twice during the season (with 23 wins and 8 losses) to Pfeiffer, top-seeded in the tournament. The women won the state tournament the previous week. They entered the AIAW regional playoffs in Bridgewater, Virginia, with a 14-game winning streak.

Marie Riley was named Most Valuable Player of the tournament, and was on the all-tournament team with teammates Jody Westmoreland and Robyn Cooper. Marie scored 30 points and took a dozen rebounds; Jody put in 23 points.

The men had only a weekend of rest before going to the NAIA District 26 playoffs.

AT PRESS TIME, the women had taken the Region II Championship and won a berth in the AIAW National Tournament.

Admissions Department reports standards high

PROSPECTIVE STUDENTS WHO APPLY to High Point College have one chance in three of being accepted for enrollment, whether they are high school seniors, transfer or exchange students.

A total of 1200 — 1500 inquiries come to the admissions office each year, with each one receiving an individualized answer as soon as possible. The admissions staff of five fulltime members stays busy recruiting students and processing applications. Admissions Director Arvil Von Cannon said the department “could always use more help.”

Between 750 and 800 prospective students actually apply for admission. Only those who meet the standards are admitted. “High Point College will not, and need not, lower its standards,” one staff member said.

“We depend on our alumni, our present students and our reputation as well as our direct recruiting efforts to keep our enrollment high,” Von Cannon said.

The average national SAT scores were lower throughout the country in 1976, but High Point College was able to maintain its self-imposed standard of the mid-900s for incoming freshmen.

Elizabeth Wilhoit, admissions counselor, said one of the most attractive features of the College is its combination of size and personality. “We are a small school; but this gives us the opportunity to relate to people on a one-to-one basis,”

she said. “When prospective students realize that our current students are people with names well known by the administration and faculty, and not numbers, then they see the human value of attending High Point College.”

Finch Lectures Planned

THE FINCH LECTURES on April 5 will discuss the role of the church-related college in relation to the church and society. Members of the department of religion and philosophy have volunteered their services for the lecture series this year.

Special guests for the lectures will be ministers of the Western North Carolina Conference of the United Methodist Church; other ministers and the general public are also invited to the series.

Members of the department, and their topics, include Dr. Earl Crow, A Theological Rationale for Church-Related Colleges; Dr. Vance Davis, The Moral Task of the Church and College; The Rev. Charles Teague, A Scenario for Educational Ministries in the Community of Faith; Dr. Owen Weatherly, The Role of the Department of Religion in a Church-Related College; and the Rev. Robert E. Lowdermilk III, The Role of the College Chaplain.

HIGHPOINTS

Second Class Postage Paid
High Point, N.C.
27262

Published six times annually by High Point College,
933 Montlieu Avenue, High Point NC 27262.
Subscription \$1. per year payable by the College.
Send change of address to above mailing address.

Raymond A. Petrea, *Editor*
Robert E. Williams, *Director of Alumni Affairs*

Member
Council for Advancement & Support
of Education

Panthers win titles in all major sports



1977-78 WAS THE BEST YEAR the College has ever had in athletics. With an overall record of 182 wins against 67 losses, the Panthers finished with a winning percentage of .728. In the Carolinas Conference they were even better with a record of 62-14, or .816.

Panthers won six conference championships — soccer, volleyball, men's and women's basketball, and baseball — and finished second in two — golf and men's tennis. At press time, the baseball team was still in post-season play after winning the District 26 tournament and was ranked 13th in the nation by the NAIA.

The most records were set by the women's basketball team, winners of the AIAW National Small College Tournament. Marie Riley was named most Valuable Player in basketball and volleyball, while teammate Ethel White was named with her to All-Conference, All-State, and All-American teams. (*Team photo, left*)

Marie also won the MVP award for the AIAW National Tournament, scoring 41 points in the championship game to merit the honor. (*Photo, left*)

The Tobias Scholar-Athlete Award, initiated by Fred Schwartzberg of Tobias, was won by Robyn Cooper.

At press time, the tennis team was representing District 26 (for the sixth straight year) in the NAIA National Tennis Tournament in Kansas City.



HIGHPOINTS

Volume 54, No. 3, June 1978



Foy award to biology prof

DR. JOHN W. WARD JR., associate professor of biology, won the Foy Distinguished Teaching-Service award at commencement, recognizing his outstanding classroom performance, interest in students, community and church work, and professional achievement.

Dr. Ward '63, returned to his Alma Mater in 1970 after earning his master's and Ph.D. degrees. He has won numerous educational and scientific honors, including membership in leading professional organizations. His nomination noted that his basic "philosophy of teaching and service is evident in his daily living and teaching. He is the kind of teacher who provides success in learning for his students by setting the example."

He was selected by a committee of faculty members and administrators. The award includes a \$1,000 U.S. Savings Bond.

Ms. Pat May chosen to play

MS. PAT MOORE MAY, assistant professor of music played for Guido Agosti in the Gina Bachauer Memorial Piano Master Classes at Duke University in March. Agosti is internationally known as a teacher of highest level technically and artistically.

Ms. May has judged piano contests for several area teachers' associations and the N.C. Music Teachers Assn. She is a member of numerous professional groups.

Fund to memorialize Gaynor

THE WESLEY GAYNOR Memorial Scholarship Fund has been established by the Lambda Chi Alpha fraternity at High Point College in recognition of his outstanding contributions to the College. Gaynor was longtime bursar at the College until he retired a year before his death in 1977.

The fraternity has several fund-raising projects underway. The fund is expected to support four \$500 scholarships awarded each year on the basis of need and academic achievement.

Radio WWIH goes on the air

RADIO STATION WHII is in operation — or was for two brief broadcasts on May 4 and 5. FCC approval came just in time for a good "shakedown" trial before the end of the year.

Jeff Nesbitt, general manager, went on the air at 6 p.m. May 4 to begin the first broadcast. With an FM frequency of 90.5 megahertz, the station will cover the High Point area — beginning in September — with news of the campus, music, and special programs from the various departments of the College. Time on the air will be limited to a brief morning broadcast and a longer evening period.

Annual Fund contributions over goal

CONTRIBUTIONS to the Annual Fund of the College have topped \$106,600. Alumni Association President Lyles Kearns made the announcement at the Alumni-Senior Banquet on May 4.

The total also includes a challenge from the Rev. and Mrs. Henry I. Ridenhour, Pilot Mountain.

With more than 1,252 alumni sending their contributions to the annual campaign, the total represents nearly 137 percent of the goal of \$78,000. The gifts will be used to support the Alumni Chair of Higher Learning, the Golden Decade capital expansion program, scholarships and grants, and other causes designated by the contributors.

The drive has been headed by Art Bookout '39, Wilmington, Delaware, who served as National Chairman, and by Gordon "Yogi" Yarborough '64, who was Advanced Giving Chairman. Letters requesting contributions were sent to more than 8,500

alumni of the College.

Last year's fund contributed \$83,082 to the College. Unless otherwise designated, all gifts received are invested in a permanent fund and only the interest is spent for the causes chosen by the Association and by individual contributors.

The gift from Mr. and Mrs. Ridenhour established a scholarship fund of \$10,000 at the College in April. Graduating with the Class of 1942, the Ridenhours have continued to be loyal and active alumni. In making their gift, they challenged the other members of their class to give generously to the College to assure its continued success.

An academic scholarship grant, or grants, will be made annually with the income from the fund. The scholarship will be awarded without restriction by the Scholarship and Financial Aid Committee of the College.

Graduation day all in the family

COMMENCEMENT was a family affair when High Point College awarded 240 bachelor's degrees on May 14. The traditional baccalaureate was held the previous Saturday evening with Chaplain Robert E. Lowdermilk III as the preacher.

Speakers for Commencement were Class President Chris Ware and Class Advisor Dr. William L. Deleeuw. Trustee chairman Charles Hayworth greeted every faculty member before the ceremonies, and then shook hands with each graduate.

Faculty marshal Raiford Porter led the march

of candidates, faculty, and administrators. Germaine McAuley, whose renditions of the national anthem began many a basketball game in Alumni Gym, sang "You'll Never Walk Alone." Janet Hinkle was her accompanist.

President Wendell Patton, Dean David Cole, and Registrar David Holt handed out the diplomas to the applause of a Gym full of parents and friends. Then after the shouting, handshaking, hugs, picture-taking and a few tears, the Class of 1978 became alumni.





SPECIAL GUESTS at the Alumni-Senior banquet were the Rev. and Mrs. Lee Moser (left), and Mr. and Mrs. Buell Moser (no relation to the Lee Mosers), talking with Cletus H. Kruyer, vice president for development. The Rev. Mr. Moser is a former pastor of the Methodist church in Burlington where Alumnus of the Year Joe Holmes is a member; the Buell Mosers are longtime friends and generous supporters of the College.



THE COLLEGE'S BOARD OF VISITORS held its annual dinner meeting (above) last month. The advisory board re-elected its officers - Kermit Cloninger, Irvin Black and Mike Flem-

ing. President Cloninger urged all members to continue their involvement with the College. Above, Trustee Chairman Charles Hayworth greets the Rev. Henry Ridenhour (seated) at the meeting.



SENIORS attended the Alumni Banquet (above) as guests of the Alumni Association. Dr. Murphy M. Osborne was the speaker. All current alumni officers were re-elected to another term.



THE HIGH POINT COLLEGE chapter of Alpha Phi Omega, national service fraternity, held a 20th anniversary banquet just before the end of the term. Alumni, advisors, faculty and staff were in attendance at the banquet in Winston-Salem.



NEW OFFICERS of Alpha Chi, national honorary scholarship society, were installed (above) in May. Officers include Jeff Apperson, Zanesville, Ohio; Randy Larzellers, Long Valley, New Jersey; Sherry Leonard, Winston-Salem; Garland Greene, High Point; and Robert Marley, Fuquay-Varina.



A CHAPTER of Sigma Delta Pi, national honor society for students of Spanish, was chartered at the College in May. Mrs. Polly J. Kayser (above, seated) is faculty sponsor for the chapter.



A. LYNN LOCKROW received the congratulations of students (above) after winning the Herschel Award at Honors Day on May 3. The award recognized his "consistently outstanding achievement in and contributions to theatrical productions over a period of years." Lockrow joined the theatre faculty in 1974 and has been acclaimed for his sets and his direction of productions.

Dr. Karmel to head identity study in July

ADULTS WHO WANT to look at human identity are invited to take a "learning vacation" at the College July 23-30. The College has received a grant from the North Carolina Humanities Committee to fund a week-long residential conference entitled "Shakespeare and Women."

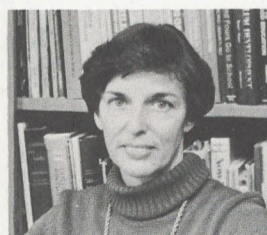
Dr. Marylin Karmel, project director, and assistant professor of early childhood education and psychology, said the conference would examine personal identity as related to individual consciousness, social custom and law, and self-perception. Plays produced by the North Carolina Shakespeare Festival in High Point will be used to explore the themes of consciousness, law and self as they interact to answer the question, "Who am I?" Dr. Karmel said. Conference participants will see Shakespeare's "Much Ado About Nothing and The Merchant of Venice. The third play, *A Man For All Seasons*, by Robert Bolt, is a contemporary drama about Sir Thomas More's strength of character when Henry VIII asked him to overrule his own conscience.

Residential faculty for the week of lectures and discussions include Dr. Earl Crow, professor of religion and philosophy, and Ms. Shirley Rawley, assistant professor of English. Visiting scholars and speakers will be drawn from history, law, religion, psychology and science.

In announcing the grant, Dr. Karmel said that adults in the learning vacation would have opportunity in a relaxed atmosphere to explore with scholars in humanities the topic of identity and the process of decision-making for contemporary women. Themes expressed in the plays are being faced by women in contemporary life, she said, and a understanding of the humanities tradition would result in persons becoming better equipped for understanding who they are and thus for sound decision-making.

The schedule of the conference will allow for many informal exchanges between residential faculty, speakers and the participants. The cost of attending the conference will include participation in morning seminary, study materials, tickets to the play, and a room in a college dormitory. Optional afternoon workshops will be held in writing, play reading, and visual arts and crafts.

Any alumni or friend of the College is invited to attend; more information is available from Dr. Karmel or the Information Services office at the College.



THE AMERICAN CHEMICAL SOCIETY chartered a student affiliate chapter at the College in the spring. Above, Bobby Ziglar, president of the chapter, receives the charter from Dr. William Bailey, chairman of the Central N.C. Section of the ACS, presented the charter. Faculty advisor is Lyman Rickard, a member of ACS.

News from Alumni

HIGHPOINTS depends on your assistance to keep the "News from Alumni" interesting, informative, and up to date. The envelope that sends in your contribution to the Alumni Funds has a place to give us current news about yourself. Please include employment, present address, and your class year. Glossy photographs are preferred. Address your news to the Director of Alumni Affairs at the College. Changes of your mailing address should also be sent to the Alumni Office.

'27

Class Chairman: Herman E. Coble
Next Class Reunion — 1982
CALLIE ISLEY SMITH, Gibsonville, is enjoying going on tours in the states with senior citizens.
MABEL BALCH THOMAS, Lenoir, is volunteer working for American Red Cross and also as a tutor in the schools.

'29

Class Chairman: Marjorie B. Welborn
Next Class Reunion — February 3, 1979
JABUS W. BRAXTON, Walkertown, retired during Western North Carolina Annual Conference in June. He completed fifty two and half years in the Annual Conference and fifty years of continuous service as a pastor of Methodist churches.

'30

Class Chairman: T.J. Whitehead
Next Class Reunion — 1980
THOMAS P. CRIDLEBAUGH and his wife, ELIZA LOMAX CRIDLEBAUGH, have lived in Clearwater, Florida since 1971. During this time they have been active in community clubs, churches, and community affairs. He has been a substitute teacher in Pinellas County Schools and continues to have an interest in education. For four years, he has been associated in the program sponsored by The American Association of Retired Persons and National Retired Teachers Association as a local coordinator.

'42

Class Chairman: Geraldine Rash White
Next Class Reunion — 1982
The Reverend JOHN M. HAMM, Danville, Virginia, is Minister of Calvary United Methodist Church. He visited with United Methodist Churches in the Bahama's in February of this year.

'43

Class Chairman: LeRoy Foster
Next Class Reunion — 1983
KATHLEEN HOWARD POWELL, Hilton Head, South Carolina, has lived at Hilton Head for the past seven years. She has three children and four grandchildren.

'48

Class Chairman: Thomas H. Elder, Jr.
Next Class Reunion — 1983
LOVEDIA STEWART SNOW, Gainesville, Georgia, teaches third grade in the Gainesville City Schools and was elected Teacher of the Year at Candler Street Elementary School for 1977-78.

'50

Class Chairman: George W. Thompson
Next Class Reunion — 1980
HAROLD W. RITCH, High Point, is owner of Piedmont Veneer Company in High Point.

'55

Class Chairman: David H. Holt
Next Class Reunion — 1980
The Reverend COY R. BOVENDER, Greensboro, is the author of *Great Conquests of God (In Verse)*. The book is published by Carlton Press, New York.
JOHN R. "JACK" PEACOCK, JR., High Point, is employed in the shipping department of Myrtle Desk Company.
MAXWELL M. WAY, JR., Graham, is currently the senior planner for the Alamance County Planning Department.

'56

Class Chairman: Lorraine McCurry Griffin
Next Class Reunion — 1981
ALFREDO J. JULIAN, Decatur, Georgia, is employed by the US Department of Labor OSHA at the Atlanta Area office as an industrial hygienist. His wife is the former Emma Lou Hartzell.

'58

Class Chairman: Paul E. Moss, Jr.
Next Class Reunion — 1983
LOUISE PUGH CORDER, Franklinville, has completed her second year as media specialist at Grays Chapel Elementary and Junior High.

'59

Class Chairman: Floyd T. Craven
Next Class Reunion — February 3, 1979
J. RONALD BLACK, La Plata, Maryland, is principal at the John Hanson Middle School in Waldorf, Maryland.
DONALD R. BOWERS, Trinity, is a teacher at Randleman High School.
ALLEN G. CALLOWAY, Winston-Salem, has been promoted to director of corporate information systems development, by RJ Reynolds Industries.

'60

Class Chairan: Betty Gray Dorman Brown
Next Class Reunion — 1980
Dr. RONALD WACHS, Wilson, associate professor of history at Atlantic Christian College presented a paper which was entitled "Law and Order Southern Styles: Governors and their National Guards and School Desegregation in the 1950s," to the Association of Historians of Eastern North Carolina spring meeting which was held at Campbell College.

'61

Class Chairman: Larry E. Rogers
Next Class Reunion — 1981
KENNETH E. CRUTCHFIELD, Winston-Salem, has been elected to the position of vice president and general manager of Sanco Corporation, Brenner's Industries, Inc. He served in various sales positions in North Carolina, West Virginia, Kentucky, and Florida prior to becoming Sales Manager for Sanco in 1967. Since 1973, he has been vice president of the marketing services for Sanitary Container Service, the Company's waste management services subsidiary.

'63

Class Chairman: Donna Lawrence Staley
Next Class Reunion — 1983
DONALD CASHION: Cincinnati, Ohio, has been promoted to assistant to the director of Merchandising and Marketing of Merrell-National Laboratories.
WINFRED E. LINDLEY, Alexandria, Virginia, has received a sustained superior performance award for his work as a project engineer in the Energy and Water Resources Laboratory at the US Army Mobility Equipment Research & Development Command, Fort Belvoir, Virginia.

'64

Class Chairman: Frank M. Jarvis
Next Class Reunion — February 3, 1979
MICKEY W. BOLES, Winston-Salem, is the new president of Smith-Phillips Lumber Company in Winston-Salem. Prior to this he was comptroller at Ed Kelly, Inc.
H. DENNIS DRAPER, JR., Roanoke Rapids, is presently serving as the director of alcohol programs at the Halifax County Mental Health Center and Associate Minister of the Garysburg United Methodist Church in Northampton County. His wife, CATHERINE POINDEXTER DRAPER '67 spent 9 days in March on tour in France and England with 32 of her students from Roanoke Rapids Junior-Senior High School, where she serves as chairman of the English department.

'65

Class Chairman: C.J. Neal Lipski
Next Class Reunion — 1980
KIRK STEWART, Titusville, Florida, is athletic director and head basketball coach at Titusville High School.

'66

Class Chairman: Ned B. Owens
Next Class Reunion — 1981
RAY S. ALLEY, High Point, is soccer and tennis coach at Guilford College. Ray was selected NAIA District 26 "Tennis Coach of the Year" and was selected District 26 "Soccer Coach of the Year" last fall. It was the second time in the last four years he has swept both honors in the same academic year.

'67

Class Chairman: Angela Smith Davenport
Next Class Reunion — 1982
MARY F. MCLEAN, Fountain Hills, Arizona, has received the Master of Education degree majoring in reading at Arizona State University. She is now a state certified reading specialist.

'68

Class Chairman: Jonathan L. Faulkner
Next Class Reunion — 1983
Dr. ERNEST A. FITZGERALD, Senior Minister, Centenary United Methodist Church in Winston-Salem is the author of *How to Be a Successful Failure - The Sure Way to Turn Failure Into Success*. The book is published by Atheneum Press of New York City.

JUDSON C. RICHARDSON, Goldsboro, was recently awarded membership in the Century 21 Million Dollar Club for 1977. He also received "Top Producing Salesperson" Award for the first quarter of 1978 at the March meeting of the Carolina's Region of Century 21 in Charlotte.

'69

Class Chairman: P. Scott Owen, Jr.
Next Class Reunion — February 3, 1979
ANN BOLLINGER COOLEY, Broomall, Pennsylvania, is pursuing the Master of Education degree at Temple University in Philadelphia.
ANN LUFF, Hackettstown, New Jersey, has been promoted to section manager, Corporate Quality Assurance & Technical Operations, with Avon Products, Inc. Ann joined Avon in 1976 as quality engineer in Corporate Quality Assurance and previous to her recent appointment held the position of Sr. Quality Engineer.

'70

Class Chairman: Richard H. Boyd
Next Class Reunion — 1980
ROBERT A. BONNAFFON and his wife, JUDY KIEVNING BONNAFFON, Washington, D.C., are being transferred to Maseru, Lesotho this summer where Bob will be a financial analyst for the Agency of International Development (State Department).
TERESA "TERRY" BOTTIS, High Point, is director of High Point Volunteers to the Court where she recruits and trains volunteers to work with youthful first offenders who are on probation.
Captain WILLIAM B. GARNER, Wurtsmith AFB, Michigan, was recently promoted to his present rank and has received a regular commission in the U.S. Air Force. In his new assignment he is a B-52 Stratofortress Navigator with a unit of the Strategic Air Command.
JOANN MOORE KELLY, Kirkwood, Missouri, had received her Ph.D. in genetics from Florida State University. She is currently employed as a research associate at Washington University, School of Medicine in St. Louis, Missouri.

NIDO QUBEIN and Associates at its spring board meeting awarded nine scholarships to High Point area students attending several private North Carolina colleges and preparing for careers related to youth work.

LUCY LATIMER SAMUELS, Southern Pines, is selling for Pinetree Sanitary Supply.
ROBERT PATE WILLIAMS, Asheboro, recently established a law practice in that city. After completing his law degree at the University of North Carolina at Chapel Hill in 1973, he was employed in the property office at the University of North Carolina at Chapel Hill for two years and then was associated with a firm in Asheboro for two years.

WAYNE E. WOODDELL, High Point, is cost accountant and assistant to the Purchasing Agent at Myrtle Desk Company in High Point. Wayne is also a member of High Point Jaycees, and president, and chairman of the board of the Myrtle Desk Credit Union.

'71

Class Chairman: Beth Holcomb Sigmon
Next Class Reunion — 1981
LYNN BEACH HARRIS, Salisbury, Maryland, has accepted a job as director of one of the two innovative projects in Maryland. The project is called "A Step Up" and its function is to provide a long term evaluation and training center for the severely and profoundly retarded.

MICHAEL S. KOCH, High Point, is director of golf for the city of High Point. Captain PATRICK E. RICHARDSON, Puyallup, Washington, is the OIC of the radar branch, 25th air division, McChord Air Force Base, Washington. He has been at McChord since November of 1977.

RONALD W. SCHOEFFLER, Athens, Georgia, is a doctoral student in the department of counseling and human development services at the University of Georgia. He is listed in *Who's Who Among Students in American Universities and Colleges*. Also, Ron is resident manager of the University of Georgia office of Family Housing.

'72

Class Chairman: John A. Young
Next Class Reunion —
LINDA G. BAGBY, Annandale, Virginia, is associate director of "Citizens Committee on Paperwork Reduction."
SUSAN GREENHAUGH CHRISTMAN, Galveston, Texas, has been teaching kindergarten in the Galveston Independent School District for the past year.
CYNDY FOSTER GOODGAME, Charlotte, has been teaching in Union County School System for five years.
JAMES V. HUGHES, Kernersville, has been promoted to a regional sales manager for Golding Industries, Textile Division, this past January.

BEVERLY STODDARD KOCH, High Point, is a teacher in the High Point Public School System.
ROSE ELLEN WALL SINK, because of her husband's transfer, will be living in Sydney, Australia for approximately 1 1/2 years.
ROBERT S. SMITH, Rural Hall, has been promoted to senior accountant by RJR Archer, Inc. Robert joined the company in 1976 as an accountant.

GINERY M. TWICHELL, Davie, Florida, is presently working for The Starting Place, Inc., a comprehensive mental health facility specializing in drug abuse. He is the supervisor of day care treatment center for adolescents.



Calloway '59 Smith '72 Sinclair '75 Smith '76 Fuller '77

'72

Class Chairman: John A. Young
Next Class Reunion —
LINDA G. BAGBY, Annandale, Virginia, is associate director of "Citizens Committee on Paperwork Reduction."
SUSAN GREENHAUGH CHRISTMAN, Galveston, Texas, has been teaching kindergarten in the Galveston Independent School District for the past year.
CYNDY FOSTER GOODGAME, Charlotte, has been teaching in Union County School System for five years.
JAMES V. HUGHES, Kernersville, has been promoted to a regional sales manager for Golding Industries, Textile Division, this past January.

BEVERLY STODDARD KOCH, High Point, is a teacher in the High Point Public School System.
ROSE ELLEN WALL SINK, because of her husband's transfer, will be living in Sydney, Australia for approximately 1 1/2 years.

ROBERT S. SMITH, Rural Hall, has been promoted to senior accountant by RJR Archer, Inc. Robert joined the company in 1976 as an accountant.

GINERY M. TWICHELL, Davie, Florida, is presently working for The Starting Place, Inc., a comprehensive mental health facility specializing in drug abuse. He is the supervisor of day care treatment center for adolescents.

'73

Class Chairman: David T. Wilson
Next Class Reunion — 1983
CINDY DICK BROOKS, Savannah, Georgia, has attended modeling school and is working to become a professional model in Savannah.

LLOYD H. DAVIS, Diamond Bar, California, is director of furniture finish design for West Coast for Lilly Industrial Coatings.

SUZANNE MOODY GILLESPIE, Seattle, Washington, graduated from Providence Medical Center School of Medical Technology. Sue is presently working as a medical technologist at Providence Medical Center in Seattle.

LARRY NELSON, Pilot Mountain, is a plant chemist at Quality Mills, Inc. in Mount Airy.
FRANCES ROACH SINK, Lexington, has taught first grade in the Davidson County Public School System for five years.

GERALD A. SUTTON, Federalsburg, Maryland is a loan officer at Denton National Bank in Federalsburg.

'74

Class Chairman: Bruce B. Tingle
Next Class Reunion — February 3, 1979
MARIA VILLEGAS BARNHART, Greensboro, is presently working for the U.S. Department of Treasury, Internal Revenue Service as a tax examiner.

JEANNE SENTMAN DAVIS, Diamond Bar, California, is teaching second grade in Los Angeles while working on her master's degree in education at California State Fullerton.

JAMES E. SHEETS, Laurel, Maryland, is an editor with The Williams & Wilkins Company, Medical Publishers in Baltimore.
BRUCE B. TINGLE, Wilson, is named in *Outstanding Young Men in America* and was also appointed to the mayor's committee on the handicapped in Wilson.

'75

Class Chairman: Stephen L. Lawson
Next Class Reunion — 1980
PAUL ALAN HUFSCHMIDT, Clayton, Delaware, is executive of Calotex Del Inc. in Middletown. His wife, SUSAN TSIKERDANOS, is an accountant at PPG Ind Inc. in Dover.

GEORGE SINCLAIR, Louisville, Kentucky, was awarded The Fielding Lewis Walker Fellowship in Doctrinal Theology from Louisville Presbyterian Theological Seminary.

'76

Class Chairman: Robert E. May
Next Class Reunion — 1981
KAREN M. ADAMS, High Point, is employed at WGHP-TV 8.
JERRY C. BURNS, Carrollton, Georgia, is a district executive of the Atlanta Area Council, Boy Scouts of America.

ANN L. HART, Clemson, South Carolina, is presently working on her master of science degree in mathematics at Clemson University.

DEBORAH JOAN MADDEN, Parkton, is teaching seventh and eighth grade at Parkton School. She also coaches girl's varsity basketball and softball.

HOWARD F. MANN, Charlotte, is presently accounts representative for domestic and international for Flying Tiger Line. Howard is responsible for North and South Carolina accounts. He is presently opening up a terminal for Flying Tiger Airlines in Charlotte.

BENJAMIN C. PROBERT, Jackson, Michigan, is employed as the assistant manager of the Paka Plaza office of the National Bank of Jackson.

ANNE H. SMITH, Rantoul, Illinois, has been commissioned a second lieutenant in the U.S. Air Force upon graduation from officer training school at Lackland AFB, Texas.

'77

Class Chairman: Sid P. Baker
Next Class Reunion — 1982
DAVID A. FULLER, Chapel Hill, is an analyst, technology and resource management at the Center for Technology Applications in the Energy Engineering and Environmental Sciences Group of the Research Triangle Institute.

DANIEL E. O'TOOLE, Winston-Salem, has been selected to be included in the 1978 edition of *Outstanding Young Men of America*.
MICHAEL S. WRIGHT, Shelby, recently received a promotion to district executive of the Boy Scouts of America.

IN MEMORIAM

RUTH PHILLIPS COBB '42, Pinetops, April 8, 1978

FRANK W. FIELD '49, Salisbury, April 11, 1978

SELMA HAZEMAY '62, Welch, West Virginia, April 10, 1978.

ALICE THOMPSON JOHNSON '49, Nashville, Tennessee, November 10, 1977.

C. RICHARD MACMANNIS '30, LaVale, Maryland, November 24, 1977.

ENOLIA S. PRESNELL '43, Charlotte, May 11, 1977.

PAUL C. WILLIAMSON '49, Durham, April 4, 1978.

NEW ARRIVALS

A daughter, Meredith Danielle, was born to Mr. and Mrs. DON E. BOWERS '59 on July 20, 1977.

A son, Jason Heath, was born to Worth B. and BEVERLEY BLIVEN CRANFORD '70 on February 22, 1978.

A son, Cayson James, was born to James R. and MARY SHAY ELLSWORTH '76 on April 12, 1978.

A daughter, Laura Ruth, was born to Don W. and LOIS JEAN MAINWARING HOUE '67 on January 23, 1978.

A daughter, Natalie Fields, was born to Mr. and Mrs. ROBERT B. LATHAN '70 on November 7, 1977.

A daughter, Jennifer Rose, was born to Steve D. and ROSE ELLEN WALL SINK '72 on October 23, 1977.

A son, Mark Phillip, was born to Mr. and Mrs. RANDOLPH P. WAUGH '68 on March 14, 1978.

A son, Maxwell English, was born to Mr. and Mrs. MAXWELL, M. WAY, JR. '55 on November 25, 1977.

A daughter, Jennifer Lyn, was born to Ronald R. and SUSAN JACKSON WOODRUFF '71 on June 12, 1977.

MARRIAGES

REBECCA BUTLER '77 and JAMES W. COBLE '75 on December 17, 1977.

Sandra Hodges Maddox and WILSON DERALD HAGEN on June 3, 1978.

PAMELA POWELL '77 and Thomas Phillip Baker, Jr. on March 18, 1978.

MARY KEENE RICKARD '72 and JERRY SUTTON '73 on March 18, 1978.

Hazel Hayworth and FABER W. RIDGLE '54 on March 25, 1978.

Elizabeth Sconyers and RANDALL ALBERT SAMUELS '70 on April 29, 1978.

Jill Isley Holt and THOMAS JEFFERY UNDERWOOD '56 on May 6, 1978.

Finch lectures look at church relation of colleges

THE FINCH LECTURES were called "an excellent home-cooked theological meal" by the *Christian Advocate* in reporting on the annual talks on Ministers Appreciation Day, April 5, at the College. "The Role of the Church Related College in Relation to the Church and Society" was discussed by members of the College's department of religion and philosophy.

Dr. Earl Crow, department head, said that probably the greatest heresy of traditional Christianity has been its failure to see that "the sacred and the secular are one. All of life is sacred," he said.

He said that since there is "no truth except what comes from God, retreat into narrow educational sectarianism is not a viable option" for the church-related college.

Under the banner of "incarnational theology," a recurring theme-phrase, Crow said "God is in history, in the here and now of this profane world." One of the functions of a church-related college is to confront students with questions of ultimate concern against the background of a Christian understanding of the world and life.

Dr. Vance Davis said there is "no essential difference between the church and church-related colleges. Both institutions share moral responsibility; both are concerned

Announce faculty, staff changes

SEVERAL FACULTY members and administrators will have different titles when classes begin for the new year in September.

Dr. David Hawk, professor of sociology and chairman of the department, has reached retirement. He will return to the classroom on a yearly basis.

William Cope, assistant professor of sociology, will be head of the department. Cope is also head of the division of behavioral and social sciences.

Dr. E. Roy Epperson, will be associate dean of the College. In addition to his other duties (professor of chemistry, chairman of natural science, divisional head) he has been assistant dean since 1968.

Dr. Nelson F. Page (mathematics) has been promoted to rank of professor. Dr. James W. Stitt (history) and Mrs. Nancy W. Shelton (education) have been promoted to associate professors. The Rev. Charles P. Teague (religion) has been promoted to assistant professor.

with the ethics of principles; and both are interested in defining what it means to be human."

The Rev. Charles Teague said "Christian education must be more than Christian nurture. Christian education must be part of the conversion process . . . to mold and not to mirror society." He indicated that the task of Christian education, at least in part, is to assist persons "to become all that God intended for them to be."

Dr. Owen Weatherly said that most students at the College "are Christian but they are not educated." He emphasized that the task of the church-related college is "not the nurture of piety but the scholarly pursuit of truth,"

— excerpted from an article by Al Simonton,
Christian Advocate

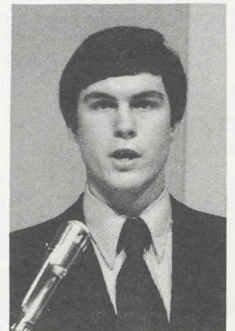
Service awards given to 3



Holmes '28



Lowdermilk III



Horn '78

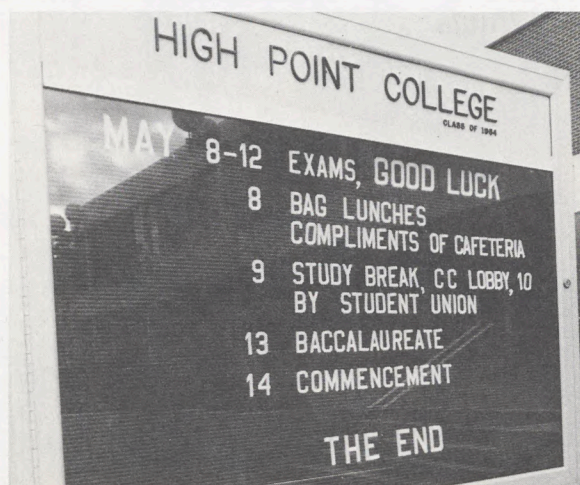
SPECIAL HONORS came to three of the High Point College family in May — Joseph W. Holmes '28, Robert E. Lowdermilk III, and James Van Horn '78.

Holmes, retired businessman from Burlington, was named Alumnus of the Year by the Alumni Assn. at the annual banquet on May 4. He has had a lifetime of civic and church activity including 20 years as treasurer of Davis Street Methodist Church and service on nearly every committee. He has been affiliated with the Kiwanis Club, Boy Scouts, and the Alamance County Human Relations Council.

Lowdermilk received the L.E. Moody award in recognition of his "outstanding service" to students. Alpha Omega cited Lowdermilk, chaplain of the College, as a "friend to every one on this campus" in presenting him the annual award at Honors Day.

The citation called attention to his activities and services "over and above his regular call of duty." He advises religious organizations, the radio station, Alpha Phi Omega, and is chairman of the publications committee.

Van Horn, recent graduate from Lutherville, Maryland, was named Outstanding Senior of 1978 at the May 4 banquet. He was president of the Student Government Association during his senior year, a dean's list student, a member of Delta Mu Delta, honorary business administration fraternity, and a member of the Order of the Lighted Lamp. He was selected to Who's Who Among Students in American Universities and Colleges, and was president and treasurer of Pi Kappa Alpha fraternity.



Aug 78

Second Class Postage Paid
High Point, N.C.
27262

HIGHPOINTS

Published six times annually by High Point College,
933 Montlieu Avenue, High Point NC 27262.
Subscription \$1. per year payable by the College.
Send change of address to above mailing address.
Raymond A. Petrea, *Editor*
Robert E. Williams, *Director of Alumni Affairs*

Member
Council for Advancement & Support
of Education

Vol. 53, No. 4, August 1978

Program adopted for gerontology career preparation

STUDENTS INTERESTED IN gerontology — the care of the aged — may take their career training at High Point College beginning in September. President Wendell M. Patton said the program is in line with the College's effort to be of service to the church as well as to continue the development of the total curriculum.

Not only can regular college students major in gerontology under the bachelor's degree curriculum but anyone interested in older people and their care may attend classes and complete the coursework.

Dr. Mitchell Faulkner, head of the Western Conference's Council for Higher Education, United Methodist Church, said all of society would profit from the "informed training of future leaders in gerontology. We need more leaders in the field who are specifically Christian in their orientation but not sectarian."

Graduates of the program may anticipate the kinds of supervisory positions that are required to operate the Methodist Home and the Wesley Nursing Center in Charlotte, the Givens Home in Asheville, and the home in Winston-Salem, now under construction.

The new courses will be added gradually to the liberal arts curriculum of the College until the full program is in operation in 1981. College officials believe High Point College to be the only college in the state offering gerontology at the undergraduate level, and one of very few in the South.

The new program will bring the College full circle in its spectrum of "people care." The human relations department, one of the largest at the College, prepares graduates to enter youth volunteer agencies as leaders and executives. Numerous other courses are designed to assist the middle-aged person in developing individual goals and self-realization.

"Now, this program of ministering to the needs of the elderly completes our intention of looking after the total educational needs of all ages," Dean David Cole said.

While maintaining a strong liberal arts posture, the College is becoming known for its career orientation. One of the largest departments is the teacher-education program which sends about 70 graduates into public and private school leadership each year. "Just as our teacher-education program is people-oriented toward a service career, so our new program looks toward rendering a much-needed service," Dean Cole said.

The new program will be interdisciplinary with the courses to be drawn from psychology, sociology, biology, business administration, and the arts.

The core courses include a study of society's responsibility to older citizens, life problems faced by the aging, a survey of public policy for dealing with an aging population, medical and patient care, and a study of theories and research in the field of aging.

Within the major, a student may specialize in either administration or service. The administrative track will include specialized courses in management, the administration of social agencies, principles and applications of management, and personnel management.

The service track will include social work, counseling, administration of recreational services, and adaptive physical education.

All students will have the opportunity to participate in an internship dealing with older people. The internship will be an on-the-job experience with the student fully integrated as a staff member of the agency or institution being served.

Director of the program will be Dr. Marilyn Karmel, assistant professor of education.



DR. LEO WEEKS, Chairman of the biology department, and Randy Callahan '78 admire the Robert R. Aylmer Scholarship plaque presented to Randy by Mrs. Aylmer. The late Mr. Aylmer graduated in 1975 and was the victim of a highway accident a month later. The scholarship established as his memorial recognizes an outstanding and deserving biology major.

Gifts from 28% alumni

ALUMNI GAVE \$109,212.62 to the College for the 1977-78 Annual Fund. The average gift was \$65.43, with 1,669 alumni sending in their contributions by the May 31 deadline.

All receipts not otherwise designated will support the scholarship program of the College, the Golden Decade capital improvement campaign, and the Alumni Chair of Higher Learning. Gifts become part of the permanent endowment of the College with only the interest income being spent. Every gift continues to provide income for the College, long after the time when the gift is initially made.

Fund officials were especially pleased with the personal response of Alumni to the Fund. Through the class structure, 5,874 alumni were contacted by mail or personal visit. Of the total number solicited, 28.4 percent responded with a gift. This is significantly more than the national average for alumni of colleges similar to High Point.

Contributions to the Vera Idol Memorial Scholarship, inaugurated last year, were included in the total amount of Annual Fund receipts.

New admissions director named

ALFRED S. HASSELL has been appointed director of admissions. He began his duties July 1, replacing A.E. Von Cannon who resigned to enter private business.

Hassell was formerly associate director of admissions at Elon College, where he had held various administrative posts since 1957. He is a graduate of Elon College, and he earned his master's degree in education from the University of North Carolina at Chapel Hill. He was a student leader at Elon, having been nominated to "Who's Who Among Students in American Universities and College."



Hassell

Hassell is married and has four children; he and his family are now living in High Point.

At the College, he will direct a staff of five admissions personnel including office workers. Shifts in personnel have been designed to insure a greater strength on the campus while the "road-runners" are calling on high school guidance counselors throughout

the South and East.

Hassell said he has a "great deal of respect and admiration" for High Point College, and that he is "extremely pleased" with his new post.

"Admissions has always been an important function of any institution," he said. "To meet the challenges of the next decade, the role of the admissions office will become increasingly important. We will need the help of all persons interested in the College if we are to continue to attract the type of student best suited to benefit from a High Point College education. I am looking forward to working with all of our alumni and friends to meet this challenge," he said.

The Admissions Office and the Alumni Office have had several cooperative ventures, including the use of alumni to discuss the College with prospective students, waiver of the \$10 application fee upon recommendation of an alumnus, and attendance of prospective students at alumni chapter meetings.

Mrs. Snider to head Annual Fund

LEADERS FOR the 1979 Annual Giving Fund have been selected and the Executive committee of the Alumni Assn. is considering a goal of \$100,000 for the drive to begin later this year.



National Chairman is Mrs. Dixie *Mrs. Snider* Thomas Snider, widow of the late Edgar Snider, longtime High Point businessman. Mrs. Snider is president of National Electronic Card Company. She has numerous civic and church interests and is a member of the College's Board of Visitors.

Advanced Giving co-chairmen are Mr. and Mrs. Lee Sherrill, both members of the Class of 1937. Lee is affiliated with the 3M Corporation and Julia is a tour planner for a travel agency.

The amount of the goal will be adopted at the fall meeting of the Executive Committee of the Alumni Assn., Lyles Kearns, president.

In recent years, the amount of the Fund has coincided with the number of the year, so that \$77,000 was the goal in 1977. The last two Funds have exceeded the goal and officials believe a significant increase in the goal is appropriate.

Class chairmen will be asked to continue their contacts with fellow classmates. An appreciation dinner for class chairmen and other Annual Giving Fund workers will be held in late August.

Alumni to administration posts

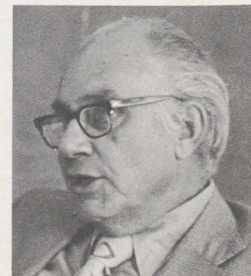
TWO ALUMNI have joined the College staff in administrative positions. Kenneth Bulla '68 has been appointed assistant business manager and Nancy Eaves Koontz '69, admissions counselor.

After majoring in business administration, Kenneth joined Security Upholstering Company. He was vice-president of the company until he came to the College in May.

Nancy earned her degree in education and taught school in the Wake County school system prior to returning to her Alma Mater in April.

Professor Thomas E. Scott

THOMAS E. SCOTT, associate professor of modern languages, died on June 8. He had been in failing health and did not complete his classes for the spring term; he had expected, however, to return to summer school. He joined the college faculty in 1965 after holding positions at other institutions. He earned his bachelor's degree from Emory University and his master's degree from the University of North Carolina at Chapel Hill. In addition to his classroom competence, Mr. Scott was known for his love of the arts and his gentle disposition.



Scott

Board of Visitors asks strong support from alumni

THE BOARD OF VISITORS was inaugurated a year ago to assist the trustees in the overall development of the College.

Members of the Board — it has almost 70 — represent a wide cross-section of leaders from the fields of business, industry, and the church in the High Point area.

Chairman Kermit Cloniger, head of the Cloniger Buick-Oldsmobile Company, Thomasville, answered some questions recently about the Board, particularly in relation to the membership of Alumni on the Board.

HIGHPOINTS: Do you see any conflict of interest between the programs of the Board of Visitors and the Alumni Association?

Mr. Cloniger: None whatever. Both groups are designed to help the College in any way possible. While the purposes of both groups may have some collateral features, their aims, as I see them, are different.

The prime purpose of the Board of Visitors is to involve area leaders — businessmen, industrialists, commercial people — in the development of the College. While some alumni may become involved through these considerations, the accent of

membership selection is keyed to the individual, rather than to any consideration of prior college affiliation. In addition, of course, the Board's membership will rotate from year to year.

HP: Is there any connection between your being a member — and chairman — of the Board and being an alumnus of the College?

Mr. Cloniger: Not by design. Up to the time I accepted the chairmanship of the Board of Visitors as a unique opportunity to serve the College, I had been, quite frankly, an indifferent and inactive member of the Alumni Association; I gave no time and very little money to the work of the College. And just for the record, I didn't graduate from the College, although Mrs. Cloniger did. (Editor's note: Mrs. Cloniger was Edith Maxine Crowder, a 1936 graduate.)



HP: Do you have any special requests of the Alumni Association?

Mr. Cloniger: Yes. I feel it is imperative that you continue your strong support. You have been highly supportive in the past; your continued assistance will be needed just as urgently in the future. You are doing an outstanding job. No institution is stronger than its alumni. Our early alumni were strongly influenced by the great Depression of the thirties; the College had to operate on an absolute minimum amount of money. No one expected innovative programs or creative teaching. The word, the idea, the whole struggle of the times, was merely to survive.

Even though that was over 30 years ago, some of our alumni may feel that the College is still operating on a mere "survival" basis. But this is not true. The College is expanding in several ways and its ability to meet the challenges of the seventies and the eighties is directly related to the continuing interest and support of its alumni.

HP: Will the Board of Visitors seek alumni as members on a pro-rata basis?

Mr. Cloniger: The Board intends to draw community leaders into its membership without regard to prior education, church membership, race, or any other qualifying factor except the potential for the kind of leadership and assistance the College must have. Again, some of the members will be alumni, but only because their other qualifications have recommended them as having the full potential of service.

HP: How do you feel about the general health of the College today?

Mr. Cloniger: The College is in good shape, and in good hands. The administrators, the faculty, the student body, the Alumni Association, the Panther Club, the Athletic program — these are all great. The Board of Trustees is outstanding; community interest and support is at an all-time high. The Board of Visitors hopes and plans to compliment all phases of the institution. We will be active in a positive and productive way. We urge the Alumni Association to continue in that same supportive role.

New Gift for Graduates??? **HPC Chair**

& Bros. highest quality chairs bear the High Point College seal in gold. Chairs are black in lacquer finish; cherry finish is also available on arms only of the armchair. Limited quantity available for pickup at the College. See shipping charges.

Shipping charges to your office or commercial dock: DC, Md, NC, SC, Va, W Va, \$15; Ala, Del, Ga, Ind, Ky, NJ, Ohio, Pa, Tenn \$20. Please request charges for other states. If final delivery to your home is required, add \$7.50 to shipping charge.

Prices for pick-up at the College

- All Black armchair — \$87
- Armchair with cherry arms \$90
- Boston Rocker (all black) \$75

(Check preference)

NEW: Needle-point kits with HPC logo and Panther, 14" x 14". Total cost is \$34 for kit including needles, instructions, and 100 % virgin wool. Order today.

Send name, address, shipping instruction, and check to Alumni Office, High Point College, High Point, N.C. 27262

Name _____

Address _____

City _____ State _____ ZIP _____

Phone _____ Amount enclosed _____

Prof fights fire in laboratory

By Gay Payne Carter '74
Enterprise Staff Writer

DR. GRAY BOWMAN, assistant professor of chemistry, will begin a unique research project this summer which, if successful, will make two common clothing materials flame resistant. He will work with Dr. John A. Cuculo of N.C. State University in the research.

Bowman and Cuculo will try to chemically modify cotton and rayon fibers, giving them flame-resistant characteristics. "We are most interested in fibers used in textiles," Bowman said. He also explained that his project would enable children's clothing, for example, to be more resistant to flames.

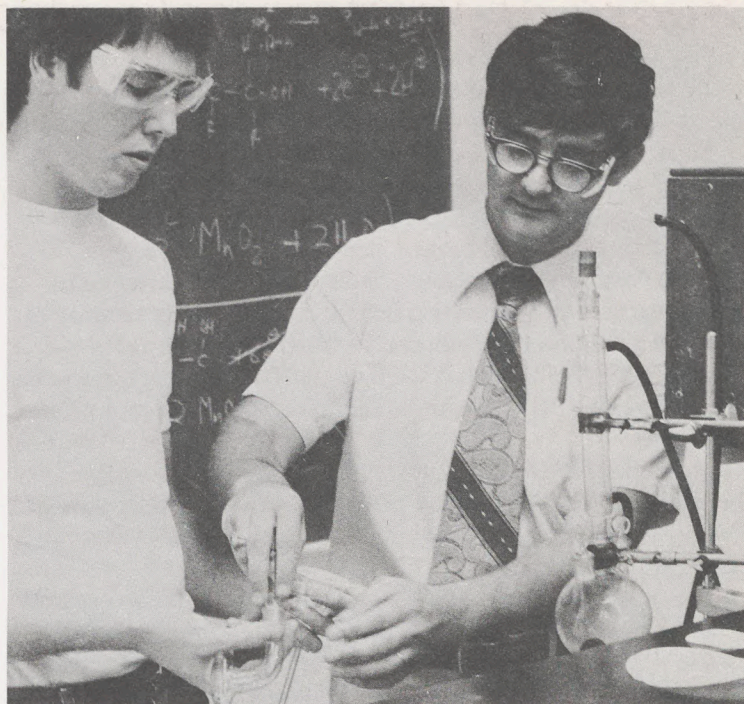
The objective of the project is the synthesis of phosphorous analogue, of reactive amic acids, Bowman said. An analogue, he explained, is two or more compounds sharing the same chemical makeup with the exception of one small part.

Cotton, natural substance, and rayon, a man-made substance, are cellulosic fibers. Bowman said his project is to chemically introduce phosphorous into rayon and cotton. Phosphorous is one of the two or three different elements which give the flame-resistant ability to cellulosic fibers, he said.

Bowman said he and Cuculo had been successful in synthesizing a carbon-based compound and had decided to extend the research to phosphorous compounds.

The actual synthesis will take place at the College, he said. Bowman will try to produce 2-carbamoylethylphosphonic acid, an organo-phosphorous compound needed in the second step of the process. The second step, he said, has been giving the research team problems.

"The second step has been tried at State, but the pure target compound has never been produced," he said. He intends to try a bio-chemical approach, a different approach than the one previously used at N.C. State.



Dr. Bowman with student in research lab

The synthesis, he said, has been successful in Poland, but the results have not been successfully replicated in the United States.

He said he became interested in this line of chemistry while working on his doctoral degree at N.C. State. Cuculo, his research partner, was his doctoral advisor at State.

Bowman, a High Point native, was an industrial chemist at Derring-Millikan Research Co. in Spartanburg before joining the college faculty two years ago. He received his undergraduate degree at High Point College.

Alumni to receive applications

ALL ALUMNI will receive an application to the College in early September. No, alumni are not expected to re-enroll and start attending classes again!

As part of a cooperative program between the Alumni Assn. and the Admissions Department, alumni are being asked to assist the total program of the College by identifying prospective students and asking them to send in an application.

The application forms to be mailed to all alumni include a waiver of the \$10 fee. With the endorsement or recommendation of an alumnus, this means that the prospective student will not be expected to include the application fee.

In other words, alumni, your signature is worth \$10 to the prospective student of your choice. Alumni who see the value of a High Point College education are asked to "pass it on."

MOVING

Please enclose
your old label

Please notify us 4 weeks in advance

Name _____ (please print)

New street address _____

City _____

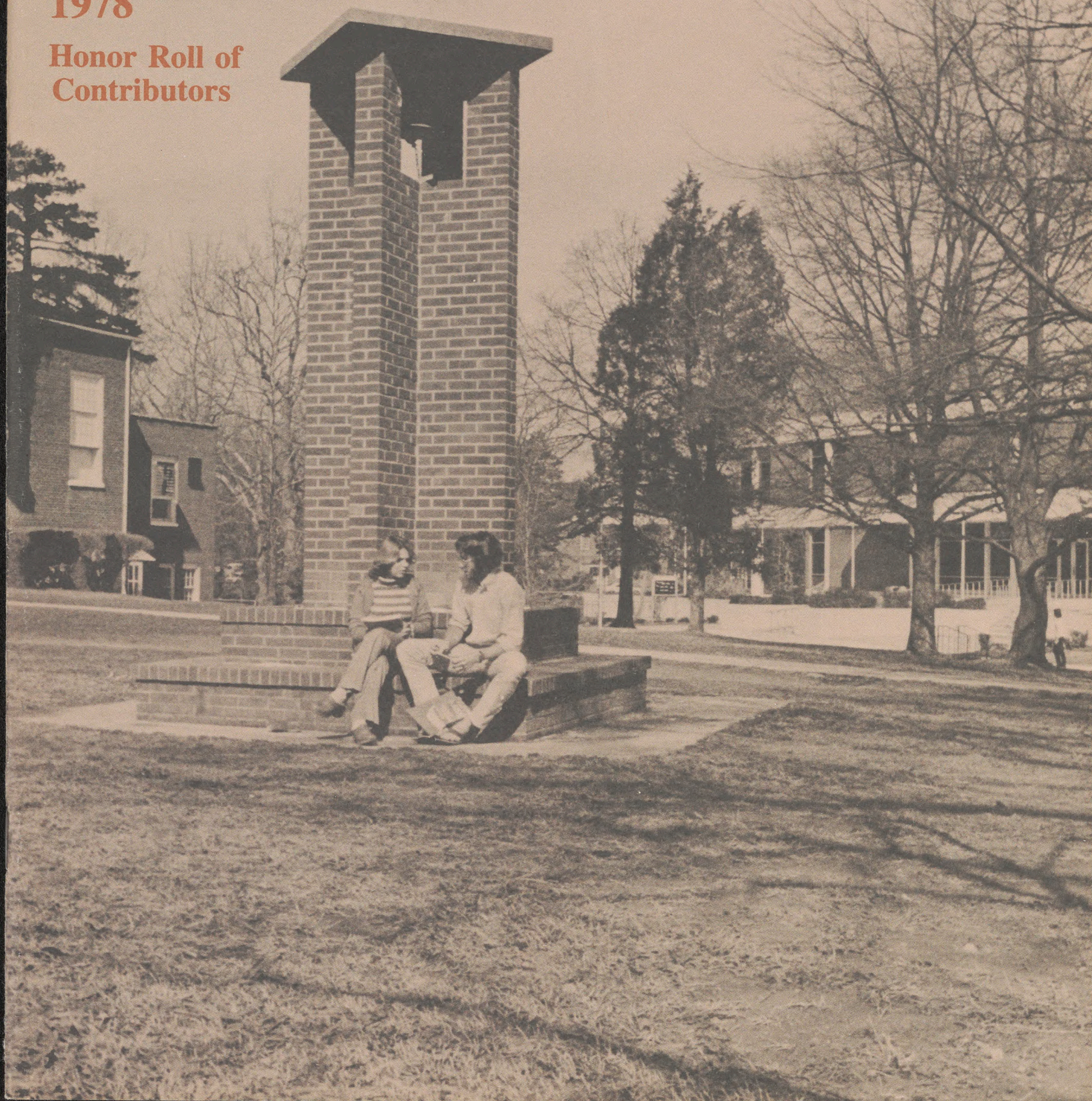
State _____ ZIP _____

Plan How To Be Generous
Make your plans now to give
to the 1979 Annual Fund.

HIGHPOINTS

The Annual Report
1978

Honor Roll of
Contributors



High Point College

THIS ISSUE OF HIGHPOINTS shows the accomplishments of 1977-78. It was a year of successes in many ways. Yet, it is more important, in these early months of 1978-79, to look to the future. There is much work ahead if the current year is to be as successful as the one just completed.

The College always operates with a clear eye on the future — a future that holds more inflation, stronger competition for students, higher standards of competence for our teaching faculty and administrators, and tougher job markets for our new graduates. The current year is fraught with both promise and peril.

At the same time, we can face the challenges with certainty of success because High Point College has always had loyal supporters, dedicated alumni, a well-motivated faculty, and students who expect high quality performance at every point. The years ahead will require renewed effort and conscientious giving by every alumni, every friend, and every benevolent interest.

While this report expresses our thanks, it also announces our confidence in your assistance as we face the times ahead. Thank you.

Wendee M. Patton
President

ALUMNI ASSOCIATION EXECUTIVE COMMITTEE 1978-79

OFFICERS: *President*, Lyles H. Kearns '50, High Point; *Past President*, Dell Conrad Johnson '61, Winston-Salem; *Vice President*, Geraldine Rash White '42, Statesville; *Secretary*, Robert D. Kornegay '64, Greensboro; *Treasurer*, Donald M. Dwiggins '64, Winston-Salem.

MEMBERS OF THE EXECUTIVE COMMITTEE: (ELECTED): 1979 — William S. Fagg, III '70, High Point; Elsie Oakley Wolf '58, Mebane; 1980 — Robert E. May '76, Winston-Salem; Eleanor C. Young '32, High Point; 1981 — Patricia Aylmer Conner '73, Eden; Thomas M. Charping '54, Charlotte.

DIRECTORS (CHAPTER PRESIDENTS): *Alamance* — R. Hardy Tew '56, Graham; *Atlanta* — Hazel Shore Mebane '57, Atlanta; *Forsyth* — Robert E. May '76, Winston-Salem; *High Point* — W. Gart Evans '75, Greensboro; *New Jersey* — Cheri P. Gonor '71, Linden; *North Carolina Conference* — Clarence L. Warren '47, Belhaven; *Washington* — Linda G. Bagby '72, Annandale; *Western North Carolina Conference* — Aubert M. Smith '35, Greensboro.

STUDENTS (EX-OFFICIO): *Student Government Association President* — Caryn M. Reinhart '79, Florida; *Senior Class President* — David M. Horton '79, Virginia; *Student Union President* — Jacquelyn Swing '79, Maryland.

ANNUAL FUND: *National Chairman* — Dixie Thomas Snider '39, High Point; *Advanced Giving Chairmen:* Lee W. and Julia Coe Sherrill '37, High Point.

COLLEGE AFFAIRS: M. Louise Adams '29, (Life Member); Cletus H. Kruyer, Vice President for College Affairs; Robert E. Williams '59, Director of Alumni Affairs.

Current Funds

Revenues and Expenditures

Year Ended May 31, 1978

OPERATING INCOME

Student Fees	\$1,946,649
Gifts & Grants	306,166
Endowment	390,437
Auxiliary Enterprises	980,595
Other Sources	120,833

Total Income \$3,744,680

OPERATING EXPENSES

Education & General	2,589,983
Auxiliary Enterprises	825,032
Student Aid	178,881
Interfund Transfers	150,784

Total Expenses \$3,744,680

Source Of Contributions

Alumni	\$ 109,212.62
Corporations, Business, and Industry gifts	70,120.44
Foundations	62,526.24
Friends (non-alumni)	175,166.87
Independent College Fund of North Carolina, Inc.	40,872.40
North Carolina Conference, UMC	17,134.83
Western NC Conference, UMC	194,093.65
Total	\$ 669,127.05

Number of Gifts

Alumni	1,669
Friends (non-alumni)	255
Corporations	94
Foundations	30
Total	2,048



High Standards and Hopes Maintained at High Point College

The news from High Point College is good. In the latter third of a decade that has seen a steady eroding of both the prestige and the quality of higher education, High Point College can demonstrate that it is an exception on the national educational scene.

The Carnegie Foundation for the Advancement of Teaching released its report late last year with the conclusion that general education at most U.S. colleges is "a disaster area." High Point College officials hastened to point out through the media the reasons why Alma Mater is an exception to that conclusion. While the curriculum has had many changes in recent years, particularly since the 1950s when post-World War II enrollments flooded many colleges, High Point College has maintained the high academic requirements that insure a thorough education. All students are required to take courses in English, religion, physical education, and a foreign language, and to select courses from the arts and literature, behavioral sciences, foundations of civilization, and science and mathematics.

While changes will continue to be made in the curriculum, college officials believe the basic core of the mandatory liberal arts courses offers the education that is needed — and desired — by well-motivated high school graduates.

Like all other institutions of higher learning, High Point College has had to face certain academic deficiencies in some incoming students. But rather than exclude those students from college-level work, or adopt lower standards to prevent their academic embarrassment, the College has sought to remedy their lack of basic skill — i.e., reading and studying. Approximately 10 percent of the incoming freshman class are required to take development reading. From the perspective of the College, however, the good news is that the situation is being handled; students who are not up to college-level proficiency are improving their intellectual skills.

The Carnegie Foundation also said that colleges should offer more work-study programs in an "integration of education and the world of work . . ." The Foundation might have taken its language from the publications of the College, but pointed toward the opposite conclusion. The Student Career Intern Program, described in a 1977 College folder, is designed "to make a student an integral part of a business, industry, social service agency, or government office." The program has furnished valuable direction to students in business programs, human relations, the sciences, volunteer organizations, and municipal governments.

The College appreciates all those who have permitted — and welcomed — SCIP students into their operations. Some of the participating agencies and businesses include AMF Hatteras; Emerywood Country Club; WGHP-TV; City of High Point; Wayside Interiors; Mabe & Co., Realtors; Council on Aging; High Point Historical Museum; and People's Savings and Loan Assn.

Several other programs, all with an underlying liberal arts base, prepare students for specific career areas. These include a cooperative program with Florida Institute of Technology, a joint major in chemistry and business, the American Humanics major, a new program in gerontology, and the communications major.

The cooperative program with Florida Institute of Technology includes career preparation in air commerce, business applications of computers, applied mathematics and computer science, environmental studies, oceanographic science, and photography. The definitive courses are taken, usually in the senior year, on one of the two campuses in Florida and the general courses, at High Point College. For the entire period, the student remains registered at High Point College.

The Interdisciplinary program of chemistry-business is designed for the student who is seriously interested in both areas. Completion of the program provides the foundation for careers in chemical sales, management in the chemical industry, and related graduate degree study.

The human relations major, one of only ten programs approved by American Humanics, prepares

students for careers in voluntary agencies and youth leadership. Graduates of the program usually move directly into executive positions with youth-service agencies such as Boy Scouts, Girl Scouts, YMCA, YWCA, Boy's Clubs, and the like.

The newest program at the College will prepare graduates for careers in gerontology, with a concentration in either administration or service. The administrative track will include specialized courses in management, administration of social agencies, principles and applications of management, and personnel management. The service track will include social work counseling, administration of recreation services, and adaptive physical education.

The communications major was inaugurated in response to students who anticipate careers in the broad areas of press, radio, and television.



Ultimate responsibility for the progress of the College lies with the Board of Trustees, and they are keenly aware of the significance of their role. To give direction for meeting the challenge of the future, the Board last year adopted a five-year plan consisting of 14 major points.

Chief among these points are:

— No major or significant changes will be made in the overall purposes, objectives, and philosophy of the College in the next five years.

— The College will seek to offer more career-oriented major programs . . . but maintain the liberal arts base with no sacrifice in quality.



— The number of students should reach 1100 by the end of the five-year period.

— The College endowment Fund should increase to no less than \$6,000,000 by the end of the period and the annual (investment) return should be in excess of 6 percent.

— The top priority physical facility need is a new Learning Resources Center and the next priority need is a new men's dormitory.

In a streamlining of internal operations, and to make the Board more intimately associated with the various divisions of the College, the trustees instituted a new committee structure. Standing committees reflect the major divisions of the College administration. Charles F. Carroll, retired state superintendent of public instruction, is chairman of the academic affairs committee; W. Roger Soles, president of Jefferson-Pilot Corporation and Jefferson Standard Life Insurance Co., is chairman of the business affairs committee; Robert B. Rankin, insurance agent, is chairman of the student affairs committee; and J. Harriss Covington, president of Harriss & Covington Hosiery Mills, is chairman of the College affairs committee.

Much of the success of the long-range program depends on the activity of the Admissions Office of the College. Growth of the student body must be predictable, stable, and according to a carefully structured plan. The classes must be kept about the same size — a freshman class disproportionately large will mean too many places left vacant when they graduate in four years.

The burden for enrolling students in a systematic fashion falls on Admissions Director Alfred S. Hassell and his associates. Mr. Hassell began work July 1, continuing a fifteen-year career in college administration. His staff includes Elizabeth Wilhoit, Elaine Conklin, Nancy Koontz, Terry Botts, and Melinda Williams.

Admissions counselors rely on contacts with high school guidance counselors, appearances at College Days, alumni recommendations, and general inquiries to identify prospective students. Yet, when their work is done and high school seniors make actual application for admissions, only those students who meet the standards of the academic level of the College are admitted for matriculation.

The faculty continues to join with the administration in the total development and improvement of the College, not only in enrollment but also in academic stature and professional achievement. Dr. Marilyn Karmel (psychology), for instance, had the second edition of her book, *Measurements and Evaluation in the Schools*, co-authored with Dr. Louis J. Karmel, published by MacMillan Publishing Co.

Dr. Karmel also initiated and conducted "Shakespeare and Women Today," a week-long humanities program partially funded by the North Carolina Humanities committee. With approximately 50 women in attendance, the program featured guest lecturers, seminars, workshops, and attendance at theatrical productions. Ms. Shirley Rawley (English department) and Dr. Earl Crow (religion and philosophy) assisted in the leadership of the program.

Mr. William Cope (sociology) and Dr. Vance Davis (religion) attended a Chautauqua course on Ethical Issues in Death and Life, sponsored by the National Science Foundation. Dr. Leo Weeks (biology) attended a similarly-sponsored course on Genetics and Society: A Dynamic Interaction.

Dr. E. Roy Epperson (physical science), associate dean of the College, attended a proposal writing seminar to aid the College in its ability to seek government and foundation support. He also attended a course at the University of North Carolina-Chapel Hill on Characterization of Atmospheric Aerosols.

Dr. Gray Bowman (chemistry) is carrying out research into the synthesis of 2-carbamoyl ethyl-phosphonic acid. This compound which when incorporated into rayon or cotton fibers should greatly increase the flame resistance of the fibers.

Dr. Allen Thacker (education) was appointed to a 3-year term on the State Evaluation Committee on Teacher Education. He continues on the N.C. Advisory Council on Teacher Education. He is vice president of the High Point area chapter of Children with Learning Disabilities and was chairman of the Guilford County Sheltered Workshop Advisory committee.

In the physical education department, Wanda Briley, Jerry Steele, and Kitty Steele all attended different workshops related to teaching skills, and Mike Glover was in graduate study at the University of North Carolina at Chapel Hill.

The faculty worked closely with the Board of Visitors, particularly in the business administration area where Dr. Richard Bennington, departmental chairman, assisted in organizing and activating the Earl N. Phillips School of Business Advisory committee.

Other faculty members brought honor to the College; Dr. James Stitt (history) won a grant to support a summer study in Canada; Mrs. Pat May (fine arts) was selected to play for concert artist Guido Agosti in a master class at Duke University; and Mrs. Polly Kayser (modern foreign language) organized a chapter of the national honor society for students of Spanish.

The College continued to receive support in several important areas, not only from the alumni but especially from individuals who saw the value of providing the means for more students to take advantage of a High Point College education. Mr. and

Mrs. Buell A. Moser, Burlington, gave \$10,000 to establish a scholarship fund in their names. Approximately \$700 will be distributed annually to qualified students. A scholarship honoring the Rev. (deceased) and Mrs. Robert M. Hardee, Greensboro, was established by his sister, Mrs. Lucy H. Olsen, Durham. When funding is completed, the scholarship will allow awards of \$1,000 per year.

The Rev. and Mrs. Harry I. Ridenhour, Pilot Mountain, in making a gift of \$10,000 for scholarships, challenged the other members of the Class of 1942 to be generous in their contributions to the Annual Fund. The local chapter of the High Point College Alumni Assn. established a \$300 annual scholarship for day students who graduate from Central, Andrews, Ragsdale, Allen Jay, and Trinity high schools.

Excellent support continued from a wide variety of sources including the Western North Carolina Conference, the Independent College Fund, the Golden Decade campaign, and Federal grants, as well as from the Panther Club.

The College forged ahead to new records in athletics, also. The first national championship in the history of the College was won by the women's basketball team. The College won other championships in women's volleyball, women's tennis, soccer, men's basketball, and baseball — the first time since the formation of the Carolinas Conference that a school has won six conference championships. Marie Riley became the first person in the history of the College and the Conference to be named All-Conference in three sports — i.e., volleyball, basketball, tennis. In two years at High Point College, she has played on six conference championship teams. As a result of the total excellent showing in sports, the College won the Joby Hawn Cup for the third consecutive year.

The College has continued to receive both the moral and financial support of a broad constituency. While alumni have made significant contributions, the College has also received exemplary support from the various foundations, businesses, corporations, and from the United Methodist Church. All the friends of the College are important; the total support of the College is due to the strength of the team.

As we look ahead, there is no doubt that the college will continue to operate under pressures. The twin problems of enrolling a full complement of students and remaining financially sound will require much attention, much imagination, and much energy. Finally, the challenges will require the support of all of High Point College's alumni and friends. If past performance is an indicator of the future, then the College can look to the future with genuine trust that the challenges will be successfully met.

Distinguished Gift Clubs

High Point College is pleased to honor individuals and organizations who make exemplary contributions to the Annual Fund of the College. To put them first in the Honor Roll of Contributors is indicative of their own quality of devotion and loyalty. The Fellows Club recognizes the ultimate leadership with gifts of \$1,000 or more. The Lamplighters Club is indicative of gifts of \$500 up to \$999. The Tower Club lists contributors of \$250 to \$499 and the Centurion Club members have each contributed \$100 to \$249. The College appreciates this opportunity to say "Thank you" to each contributor.

The Fellows Club

Alumni

Patricia Pressley Aylmer '73
Herman W Bernard '38
Foil V Charles '50
George S Erath '52
Harry Brown '35 & Helen Crowder
Finch '41
Lois Hedgecock Gay '36
William D '47 & Beverly Burton
Goldston '47
Thomas S Haggai H'65
Robert K '56 & Ann Swanson
Latta '56
Edward E H'66 & Annie Robbins
Mendenhall '32
Nido Qubein '70
Robert B '38 & Nannabeth Null
Rankin '41
Henry I '42 & Ruth May
Ridenhour '42
Dixie Thomas Snider '39
Gordon Yarborough '64

The Lamplighters Club

Alumni

Jack J Bollinger '54
George P Highsmith '44
J Richard '49 & Eutha Spencer
Hix '49
L B Holt '40
James F Payne '69
L B Pope '48
J Clyde '31 & Ruth Wood
Pugh '41

Friend of the College

Howard R Panocast

Friends of the College

Warren L Anderson
Carolina Container Co Inc
Mrs French L McMillan
Perpetual Savings & Loan Association
Slane Hosiery Mills Inc
Herman H Smith
George T Wood & Sons Inc

The Tower Club

Alumni

Arthur R Bookout '39
Allen P Brantley '51
Sara Hutchens Brinson '46
Joseph F Coble '34
J P Crowder '37
Charles C Edwards Jr '46
Michael B Fleming '49
David L '55 & Betty Lord
Francis '57
C L Gray '33
Eloise Best Hawk '32
Joseph W Holmes '28
Robert L Hutchens '45
E Gene Kirby '57
Lester D '49 & Dorothy Johnson
Lane '48
W Joseph May '41
Bill L Minor '50
David D Moore '56
Bob L '53 & Jo Bundy
Parrish '53
Ray J Richards '38
J Wilson Rogers '37
G Richard Ware '64

The Centurion Club

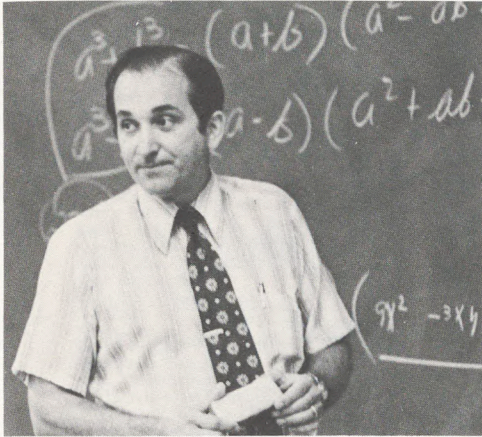
Alumni

- David M Abernathy '55
 Frances Hunter Adams '55
 Terry R Alexander Jr '59
 Gilbert L Arthur '49
 Edwin L Auman '51
 James A Auman '45
 Richard R Axley '50
 W Stan Baker '57
 Janet Jaenke Bash '76
 James Clifton Berrier '54
 Kenneth G Berrier '51
 Harriett E Berry '42
 Roy R Bevan '55
 Beverly E Bond '40
 William E Bost '56
 James F Brewer '49
 Stan C '57 & Elaine Mills
 Broadway '58
 Richard P Budd '63
 Gilbert S '49 & Billie Welch
 Callahan '48
 Betty Brady Campbell '45
 Kenneth A '58 & Betty Hedgecock
 Campbell '53
 Charles Carroll H '52
 G Carlton '50 & Lamarie McArthur
 Clinard '50
 D Kermit '36 & Edith Crowder
 Cloniger '36
 Herman E '27 & Lelia Wagoner
 Coble '28
 Jerome E Counihan '42
 Helen Dameron Coward '38
 Floyd T Craven '59
 Richard Crowder DD '76
 John H Crowell '50
 W Zane Daniel '62
 Frank D '59 & Marjorie Payne
 Daniels '46
 Louise Cole Dark '40
 Charles D Davis '59
 Betsy Durland Davis '32
 Adrian B Delk '59
 Jackson D Dobbins '57
 Donald M Dwiggin '64
 Albert G Earle '41
 John C '31 & Louise Collett
 Easter '31
 Louise Surratt Edwards '39
 Margaret Perry Ellington '27
 Kay Carroll English '60
 William G '52 & Stella Redding
 Ervin '51
 William S Fagg III '70
 Jonathan L Faulkner '68
 Grace Bivens Ffrench '42
 Robert A Fleming Jr '49
 James A Fowler Jr '53
 Charles J Fulp '58
 Unity Nash Funderburk '33
 J E '37 & Virginia Massey
 Garlington '35
 Robert S Gayle '46
 Occo D Gibbs '38
 Allen M Gillie '48
 Robert B Glisson '51
 J Michael '76 & Karen Kruyer
 Glover '76
- J Marse Grant '41
 G Leon Green '51
 Warren L '70 & Martha Thomas
 Grimes '70
 Willis F '44 & Marguerite Koontz
 Gupton '45
 Travis F Hanes '54
 Ardenal '49 & Margaret Weant
 Haney '48
 Melton E Harbin '45
 Ellen Hartman '70
 Juanita Hayworth Hatcher '36
 William B Hatcher '41
 Porter A '39 & Wilma Sink
 Hauser '41
 William R Henderson '43
 L Frank Henry '48
 Doris Price Hill '72
 R L '28 & Della Moore
 Hill '31
 C Reginald Hinshaw '40
 George W Holmes III '39
 Stuart M Hoyt Jr '66
 A Ray Hughes '57
 Fred C Hughes '69
 Clarence '50 & Wanda Trogdon
 Ilderton '49
 Millard G Isley '36
 Sylvia Bobo Jenkins '57
 Charles R '60 & Kathryn Traywick
 Johnson '60
 Harvey B '53 & Willie Davis
 Johnson '53
 Dell Conrad Johnson '61
 Jeremiah F Johnson '52
 Numa C Johnson Jr '41
 James T Jones '39
 W Arthur Kale H '51
 Lyles H Kearns '50
 Whitman C Kearns '38
 Clarence C Keever '46
 Reuche Chadwick Kimrey '32
 Eileen McIlvaine Koerner '60
 Robert D Kornegay '64
 Lewis C Kress '28
 L Winfred '42 & Cleo Pinnix
 Lamar '41
 Theresa Hartman Langley '75
 Mildred Johnson Lea '36
 Kathryn Allen Leach '43
 Leonard B '62 & Louise
 Lewin '64
 Winfred E '63 & Gail Raines
 Lindley '66
 Willis L Brown '50
 Robert E Lowder '53
 J C McAllister Jr '49
 Hugh S McCachern '33
 James H '42 & Helen Scott
 McCall '43
 Dorothy Hoots McCollum '56
 L Daryl McGuire '61
 John J McKeithen '40
 J Clay Madison '32
 Charles W Martin '38
 Orren R Mason '49
 John M Matthews '50
 Larry K Matthews '67
 C Douglas Mayes '50
 Luther R Medlin '30
- Richard D Meisky '51
 Henry H Miner '43
 Harold M '66 & Mary Lou
 Troutman Moose '64
 Gerald A '62 & Pauline Moss
 Morgan '64
 Vernon A '33 & Jennie Floyd
 Morton '31
 George H Needham '41
 Frank M Niernsee '38
 D Moody Nifong '33
 Iris Welch Norman '37
 D Paul Oakley '37
 Murphy M '58 & Janice Solomon
 Osborne '59
 Paul S Owen '37
 Thomas Roger Pike '64
 Jeanne Rankin Pleasants '41
 Eugene E '45 & Virginia Cohen
 Pomplitz '45
 Shirley Yokley Rawley '59
 George P Robinson H '77
 Max P Rogers '38
 Leon Safrit '58
 William R '53 & Jane Shelton
 Shaffer '56
 Nancy Watson Shelton '56
 Richard A Short '40
 Edwin H '58 & Elizabeth Wood
 Shufelt '42
 John R Sills '53
 Carl M '33 & Anzelette Prevost
 Smith '32
 Sidney A Smith '35
 Joseph F Snider '28
 Fred A Southard Jr '56
 Martha Idol Stevenson '40
 William D Stockard '34
 Eugene F Street '63
 Gurney L Stroud Jr '49
 Ruth Myers Surratt '40
 W Sid Tayloe Jr '52
 J Allen Thacker '39
 George W '50 & Jo Ann Wyatt
 Thompson '50
 Billy R Tucker '60
 David M '69 & Nancy Beamer
 Tuxhorn '70
 Ginery M Twichell '72
 Garland E Wampler '52
 John E '63 & Louella Richards
 Ward '64
 Donald E Wehry '40
 Julius D Weiner '43
 George C Welch Jr '62
 Elizabeth Hanner Whitaker '30
 Murray M White Jr '51
 Harley M Williams '42
 Joel E Williams '47
 Robert E Williams '59
 Hoyt H Wood '36
 Eleanor C Young '32
 Hazel Wellborn Young '36
 C Virgil Yow '30
 James J Zacovic '33

Friend of the College

Lloyd O. Hughes

Report of Class Gifts to The Annual Alumni Fund



Class	Size	Number Solicited	Donors	Percentage* Response	1977-78 Goal	Final Amount	Average Gift
1927	12	8	12	150.0%	\$ 400.00	\$ 265.00	\$ 22.08
1928	37	16	20	125.0%	700.00	1,027.50	51.38
1929	46	24	23	95.8%	775.00	417.50	18.15
TOTAL	95	48	55	123.6%	\$ 1,875.00	\$ 1,710.00	\$ 31.10
1930	41	21	20	95.2%	\$ 800.00	\$ 740.00	\$ 31.00
1931	39	23	17	73.9%	800.00	805.00	47.35
1932	42	18	18	100.0%	1,725.00	1,536.00	85.33
1933	43	18	21	116.0%	1,100.00	1,112.50	52.98
1934	39	21	16	76.1%	750.00	545.00	34.06
1935	39	27	14	51.9%	825.00	2,219.00	158.50
1936	42	21	21	100.0%	1,500.00	1,890.00	90.00
1937	72	49	22	44.9%	2,100.00	1,237.00	56.23
1938	61	61	25	86.2%	2,100.00	7,232.50	289.30
1939	96	96	30	49.2%	6,200.00	6,461.00	215.37
TOTAL	514	355	204	79.3%	\$17,900.00	\$23,778.00	\$116.56
1940	92	58	25	43.1%	\$ 2,000.00	\$ 1,560.50	\$ 62.42
1941	106	71	38	53.5%	4,000.00	4,514.50	118.80
1942	99	74	30	40.5%	2,200.00	11,370.73	379.02
1943	87	60	20	33.3%	1,000.00	707.50	35.38
1944	73	55	12	21.8%	1,100.00	742.50	61.88
1945	71	50	19	38.0%	1,250.00	945.83	49.78
1946	58	38	12	31.6%	1,150.00	978.33	81.53
1947	83	58	14	24.1%	1,100.00	11,022.50	787.32
1948	140	140	25	17.9%	1,000.00	1,252.50	50.10
1949	257	189	40	21.1%	2,600.00	1,990.00	49.75
TOTAL	1,066	793	235	33.2%	\$17,400.00	\$35,084.89	\$149.30
1950	190	137	33	24.1%	\$ 4,000.00	\$ 3,971.20	\$120.34
1951	208	152	30	19.7%	1,650.00	1,058.10	35.27
1952	178	127	26	20.5%	2,000.00	1,942.50	74.71
1953	162	115	32	27.8%	1,750.00	1,414.40	44.20
1954	164	125	18	14.4%	1,750.00	1,382.50	76.81
1955	168	121	24	19.8%	1,150.00	807.50	33.65
1956	191	137	32	23.4%	1,550.00	2,233.50	69.80
1957	231	174	31	17.8%	1,500.00	1,227.50	39.60
1958	239	179	27	15.1%	2,000.00	736.50	27.27
1959	231	171	33	19.3%	2,000.00	1,258.00	38.12
TOTAL	1,962	1,438	286	20.2%	\$19,350.00	\$16,031.70	\$ 56.05
1960	229	174	30	17.2%	\$ 1,200.00	\$ 810.50	\$ 27.02
1961	221	164	22	13.4%	1,200.00	630.00	28.64
1962	240	183	20	10.9%	900.00	537.50	26.88
1963	243	180	35	19.4%	1,500.00	710.50	20.30
1964	200	102	31	30.4%	2,200.00	7,183.50	231.73
1965	247	190	19	10.0%	700.00	183.50	9.66
1966	247	186	21	11.3%	1,300.00	452.50	21.55
1967	201	152	18	11.8%	725.00	375.00	20.83
1968	231	173	19	11.0%	600.00	404.50	21.29
1969	310	236	37	15.7%	1,400.00	1,107.50	29.93
TOTAL	2,369	1,740	252	15.1%	\$11,725.00	\$12,395.00	\$ 49.19
1970	299	223	29	13.0%	\$ 5,100.00	\$ 3,602.50	\$124.22
1971	248	189	26	13.8%	500.00	302.50	11.64
1972	256	197	19	9.6%	725.00	497.50	26.18
1973	249	187	21	11.2%	1,625.00	1,326.50	63.17
1974	245	183	17	9.3%	400.00	205.00	12.06
1975	225	172	24	14.0%	650.00	427.50	17.81
1976	224	170	17	10.0%	500.00	367.50	21.62
1977	201	179	44	24.6%	250.00	122.50	2.78
1978	204	-	204	100.0%	-----	98.40	.48
TOTAL	2,151	1,500	401	22.8%	\$ 9,750.00	\$ 6,949.90	\$ 17.33
Honorary Degree Recipients			15			\$10,406.13	\$693.74
Miscellaneous Gifts			221			\$ 2,856.50	\$ 12.93
TOTALS	8,157	5,847	1,669	28.4%	\$78,000.00	\$109,212.62	\$ 65.43

* Based upon number of Alumni solicited for Annual Alumni Fund

Contributors to High Point College

Alumni

Class of 1927

Class Chairman:
Herman E Coble Sr
Number in Class: 12
Class Participation:
12 (100 per cent)
Gifts: \$265.00

Pomona Johnson Amick (E)
Ethel Blackwelder Broome (E)
Herman E Coble Sr (E)
Margaret Perry Ellington (E)
May Frazier Ferree (E)
Emma Whitaker Hoskins (E)
O C Loy (E)
William M Loy (E)
Callie Isley Smith (E)
Jewel Hughes Stokes (E)
Jean Williams Strouse (E)
Mabel Balch Thomas (E)

Class of 1928

Class Chairman:
Joseph W Holmes
Number in Class: 37
Class Participation:
20 (100 per cent)
Gifts: \$1,027.50

Louise Koontz Armfield
Mary Woollen Auman
J Elwood Carroll (E)
Mary Lelia Wagoner Coble (E)
Mary Lois Coble (E)
Lillie Mae Braxton Dean (E)
Alma Lambeth Dorsett (E)
Annie Livengood Hartsell (E)
R L Hill
Joseph W Holmes (E)
Canary Johnson Kearns (E)
Lewis C Kress (E)
Helen Hayes Lewis (E)
Dora Pearson Madison (E)
Spencer Cutchin Paschall
Susie Myers Perdue (E)
Jacob Robinowitz (E)
Laura Thompson Russell (E)
Joseph F Snider
Ralph H Vance (E)

Class of 1929

Class Chairman:
Marjorie B Welborn
Number in Class: 46
Class Participation:
23 (95.8 per cent)
Gifts: \$417.50

M Louise Adams (E)
Grover L Angel
Antonios Antonakos
Jabus Walter Braxton (E)
Willie Fritz Brinkley (E)
Inez Strader Bulla
Juanita Amick Burgess (E)
Claire J Douglas
Blanche Ingram Fulp (E)
Margaret Gurley Fussell
Dorothy V Hoskins (E)
Samuel Hyman (E)
Bessie Butler King (E)
Alice Freeze Poole (E)
J Vernon Robertson
Mary Clark Schneider (E)
Treva Beeson Slaughter
J Marshall Swanson (E)
Lily Davis Tesh
Inez Reynolds Vance (E)
Dolli Wagner Ward (E)
Marjorie B Welborn (E)
Mamie York Wirsching (E)

Class of 1930

Class Chairman:
Talton J Whitehead
Number in Class: 41
Class Participation:
20 (95.2 per cent)
Gifts: \$740.00

Rosalie Andrews (E)
Jessie R. Blair (E)
Charles A Brooks
Grace Barnette Cox (E)
Eliza Lomax Criddlebaugh (E)
Thomas P Criddlebaugh (E)
Annabel Thompson Harris
Kathleen Teague Hedrick (E)
Elizabeth Snow Welborn Hodges
Kenneth G. Holt (E)
Richard MacMannis *
Ruth Hayes Marlette
Luther R Medlin (E)
Lucy Nunnery Payne (E)
Fred G Pegg
Huldah Dixon Walston (E)
Elizabeth Hanner Whitaker
Talton J Whitehead (E)
Pauline Elkins Whiteside
C Virgil Yow (E)

*Deceased

Class of 1931

Class Chairman:
Hart B Campbell
Number in Class: 39
Class Participation:
17 (73.9 per cent)
Gifts: \$805.00

Lucille Browne (E)
Hart B Campbell (E)
Charlene Grimes Carter (E)
Aubry W Dunbar (E)
John C Easter (E)
Louise Collett Easter (E)
Emma Lee Poole Furches (E)
Della Moore Hill
Althea Presnell Lewis (E)
Maloie Bogle McCrary
Margaret Thompson McMillan (E)
Leslie Johnson Miller
Vernon A Morton (E)
Katherine Murr Nibbelink (E)
J Clyde Pugh (E)
Robert L Reese
Clara Goolsby Teague (E)

Class of 1932

Class Chairman:
Reuche C Kimrey
Number in Class: 42
Class Participation:
18 (100 per cent)
Gifts: \$1,536.00

Dessie Lea Little Braxton (E)
Truth Isley Coon (E)
Betsy Durland Davis (E)
Sue Morgan Denny (E)
Zeb R Denny (E)
Eloise Best Hawk (E)
G Fielding Kearns (E)
Reuche Chadwick Kimrey (E)
Ellen Glenn McCain
J Clay Madison (E)
Annie Robbins Mendenhall (E)
Mildred Massey Moran (E)
Juanita Andrews Peace
Gladys Guthrie Pugh (E)
M Milton Schwartz (E)
Anzelette Prevost Smith (E)
Olive Thomas Wible
Eleanor C Young (E)

Class of 1933

Class Chairman:
Unity Nash Funderburk
Number in Class: 43
Class Participation:
21 (100 per cent)
Gifts: \$1,112.50

Edna Walker Bingham (E)
Homer G Bivens
Elva Cartner Davis (E)
Unity Nash Funderburk (E)
C L Gray (E)
Elizabeth Gurley (E)
William M Howard Jr (E)
W Ralph Jacks (E)
E Doris Keener (E)
Wilton H Kimmer (E)
Hugh S McCachern
Cornelia Howard Mason (E)
Clarence P Morris (E)
Jennie Raye Floyd Morton (E)
D Moody Nifong (E)
Elizabeth Ross Reese
Anthony J Simeon
Carl M Smith (E)
Margaret Pickett Snuggs
Lindsay F Strader
James J Zacovic

Class of 1934

Class Chairman:
Joseph F Coble
Number in Class: 39
Class Participation:
16 (76.1 per cent)
Gifts: \$545.00

John W Austin Jr (E)
Abbie Helen Betts
Alma F Andrews Clark
Joseph F Coble (E)
Ivan D Crissman (E)
Frances Taylor Davis (E)
Jewell Welch Deans (E)
J Thomas Ellis (E)
Madelyn Packer Kearns (E)
Virginia Fritz Leonard
William W Price (E)
Bessie Hedrick Simeon
Ola A Stafford (E)
William D Stockard (E)
Ethel Fav Tesh (E)
Mabel Hayes Williams

Class of 1935

Class Chairman:
Virginia H Garlington
Number in Class: 39
Class Participation:
14 (51.9 percent)
Gifts: \$2,219.00

James R Bowers (E)
Mae Hayes Bulla (E)
Robert M Byron (E)
Ann Moss Chidester
Leon I Chidester
Harry Brown Finch
Virginia Massey Garlington (E)
James H Hight (E)
Irene Chadwick McFarland (E)
Aubert M Smith (E)
Sidney A Smith
Lucy Ross Taylor (E)
J Paul VonCannon (E)
Helen Raper Wall

Class of 1936

Class Chairman:
Millard G Isley
Number in Class: 42
Class Participation:
21 (100 percent)
Gifts: \$1,890.00

Nell Brover (E)
Gilbert H Clinard
Edith Crowder Cloniger (E)
D Kermit Cloniger (E)
George B Elder (E)
Daphne Swiggett Fansler (E)
Lois Hedgecock Gay (E)
Juanita Hayworth Hatcher (E)
Lillian Varner Houck (E)
Millard G Isley (E)
Mildred Johnson Lea (E)
Pattie Barteo McIntyre
Robert E Lee Moser (E)
J Leo Pittard (E)
Frances Lambeth Reynolds (E)

Thomas C Teague (E)
Ruth Clark Wallace (E)
Leonard M White (E)
Hoyt H Wood (E)
Hazel Welborn Young (E)
James W Younts (E)

Class of 1937

Class Chairman:
Mary Margaret Bates Brown
Number in Class: 72
Class Participation:
22 (44.9 per cent)
Gifts: \$1,237.00

Frances Lindsay Austin (E)
R Odell Brown (E)
Mary Margaret Bates Brown (E)
Paul J Bulla (E)
Margaret Stout Byrum (E)
Joseph P Crowder
J E Garlington (E)
Lucy Fuller Martin (E)
Elise Kilpatrick Morgan
Samuel W Myers (E)
Iris Welch Norman (E)
D Paul Oakley (E)
Agnes Willcox Owen (E)
Edward J Phibbs Jr (E)
Elizabeth Pirtle Phibbs (E)
Margaret Smith Pittard (E)
Herbert T Ragan (E)
Charles E Ridge
J Wilson Rogers (E)
Julia Coe Sherrill
Lee W Sherrill
William W Weisner (E)

Class of 1938

Class Chairman:
Robert B Rankin
Number in Class: 61
Class Participation:
25 (86.2 per cent)
Gifts: \$7,232.50

Margaret Brown Bailey
Frances Jones Bass (E)
Herman W Bernard
Mary Frances Gerringer Boyles (E)
W Howard Bradner
David F Cooper
Helen Dameron Coward (E)
Kathleen Hepinstall Dunning (E)
Occo D Gibbs (E)
George T Gunter (E)
William C Harrell (E)
Wayne T Harris
Lola Smith Hodgkin
Hildreth Gabriel Jordan (E)
Whitman C Kearns (E)
Charles W Martin
James R Mattocks (E)
Ennis Sink Mickey
Frank M Miernsee Jr (E)
Allen J Parker (E)
Robert B Rankin (E)
Ray J Richards (E)
Ruth Brown Ridge
Max P Rogers
L V Cherry Smith

Class of 1939

Class Chairman:
J Allen Thacker
Number in Class: 96
Class Participation:
30 (49.2 per cent)
Gifts: \$6,461.00

Nancy M Barnette (E)
Arthur R Bookout (E)
J Vaughn Boone (E)
Harry G Bright
Helen Hunter Brodie (E)
Sarah Lou Peoples Bryson
Janice Jenkins Corbus (E)
J H Dillard
Louise Surratt Edwards
Dorothy Wiggins Ellis (E)
E Paul Hamilton (E)
Virginia Curry Hardin
Porter A Hauser (E)
William F Hester
George W Holmes III (E)
James T Jones (E)
T Lea Joyner
Josephine Cleo Hardee Kana (E)
Donna Lee Loflin
Austin C Lovelace (E)
Helen Bates McKinney (E)

The Encore Club

ALUMNI who have contributed to the College for at least two consecutive years are members of the Encore Club. They are designated with an (E).

Jacqueline Kinney Meyer
 Nancy Parham Phillips (E)
 Elizabeth Hoffman Ragan (E)
 Dixie Thomas Snider (E)
 J Allen Thacker (E)
 Olivia Amos Wadsley
 R Gilmer Wagoner
 Charles D White (E)
 Margaret Austin Yarborough (E)

Class of 1940

Class Chairman:
 Beverly E Bond
 Number in Class: 92
 Class Participation:
 25 (43.1 per cent)
 Gifts: \$1,560.50

Beverly E Bond (E)
 Verta Idol Coe (E)
 Louise Cole Dark (E)
 Cecelia Isaac Eisenberg (E)
 Esther Miran Franklin (E)
 Nell Holton Hedrick
 C Reginald Hinshaw (E)
 L B Holt (E)
 Leone Perry Ivey
 Mary Carraway Johnson (E)
 Pauline Palmer Lovelace (E)
 John J McKeithen (E)
 Edith Vance Mattocks (E)
 J V Morgan (E)
 Olive Hutchins Myers (E)
 Elizabeth Kivett Pirtle
 W Edgar Poovey
 Richard A Short (E)
 Margaret V Sink
 Martha Idol Stevenson (E)
 Ruth Myers Surratt (E)
 Ruth Futrelle Thompson (E)
 Josephine Gibson Tipton (E)
 Donald E Wehry
 Anna Tesh Youngblood (E)

Class of 1941

Class Chairman:
 Albert G Earle
 Number in Class: 106
 Class Participation:
 38 (53.5 per cent)
 Gifts: \$4,514.50

Hayden C Bailey
 Ruth Murphy Black (E)
 Pauline Bland Kennett Boggs
 Kate A Bulla
 Orpha Anne Burgess (E)
 Jane Austin Burris (E)
 R Delbert Byrum (E)
 James E Cashatt
 Betty Sechrest Clontz (E)
 Charles A Cochrane (E)
 Celeste Payne Corum (E)
 Albert G Earle (E)
 Helen Crowder Finch
 David H Giles (E)
 J Marse Grant
 Catherine Phillips Hamilton (E)
 William B Hatcher (E)
 Wilma Sink Hauser (E)
 Clara Helsabeck
 Ralph B Hight (E)
 Anonymous
 Numa C Johnson Jr (E)
 C Burke Koontz (E)
 Lucy Neal Thayer Koontz (E)
 Cleo Pinnix Lamar (E)
 Jack D Lee (E)
 W Joseph May (E)
 Gertrude Bingham Maynard (E)
 Lucille Craven Myers (E)
 George H Needham
 Jeanne Rankin Pleasants (E)
 Ruth Wood Pugh (E)
 Nanabeth Null Rankin (E)
 Morton Samet (E)
 Elinor Grimes Senter (E)
 Byrdelle Nicholas Sworin (E)
 Claude A Watts Jr
 Willie D Welborn (E)

Class of 1942

Class Chairman:
 Geraldine Rash White
 Number in Class: 99
 Class Participation:
 30 (40.5 per cent)
 Gifts: \$11,370.73

W Darrell Allred (E)
 Robert M Andrews (E)
 Iris Thacker Beck (E)
 Harriett E Berry (E)
 Ben F Bulla (E)
 Sarah Lou Gerringer Byrd (E)
 J Banks Chilton
 Jerome E Counihan (E)
 Grace Bivins French (E)
 Ethel Hinshaw Fields (E)
 Ruth Good (E)
 Kathleen Hall

John M Hamm (E)
 Willie Edwards Hauser (E)
 L Winfred Lamar (E)
 Ralph O Lanier (E)
 James H McCall Jr (E)
 Mary Gold McMichael (E)
 Cardlyn Nifong Motsinger (E)
 Jack T Pugh Jr (E)
 Henry I Ridenhour (E)
 Ruth May Ridenhour (E)
 Theodore W Schumacher (E)
 James O Scotten (E)
 Clayton S Sechler (E)
 Elizabeth Wood Shufelt (E)
 George C Welborn
 Geraldine Rash White (E)
 Harley M Williams (E)
 Helen Sykes Woodley

Class of 1943

Class Chairman:
 LeRoy Foster
 Number in Class: 87
 Class Participation:
 20 (33.3 per cent)
 Gifts: \$707.50

James F Caudle Jr
 LeRoy Foster (E)
 L W Gerringer Jr
 William H Gossard
 Zelma Farnell Gossard
 Jean Davis Harrison (E)
 Harry L Hauser (E)
 William R Henderson (E)
 William R Howell
 Kathryn Allen Leach (E)
 Helen Scott McCall (E)
 Hank H Miner (E)
 Joseph P Peters (E)
 Kathleen Howard Powell (E)
 Earline Loftin Spencer (E)
 J Ross Spencer Jr (E)
 Robert L Truesdell (E)
 Martha Mickey Walker (E)
 Francis T Washburn
 Julius D Weiner

Class of 1944

Class Chairman:
 Willis F Gupton
 Number in Class: 73
 Class Participation:
 12 (21.8 per cent)
 Gifts: \$742.50

Ella Cox Btelizna (E)
 J K Bostick (E)
 Maude S Carraway (E)
 Clyde L Collins (E)
 Jessie McNeill Crutchfield (E)
 Frances Clinard Davis (E)
 Willis F Gupton (E)
 George Perry Highsmith (E)
 Ailene Kirkman Johnson (E)
 Jack F Minnis Jr (E)
 Ethel V Norton (E)
 Dorothy Lee Usher Whitledge (E)

Class of 1945

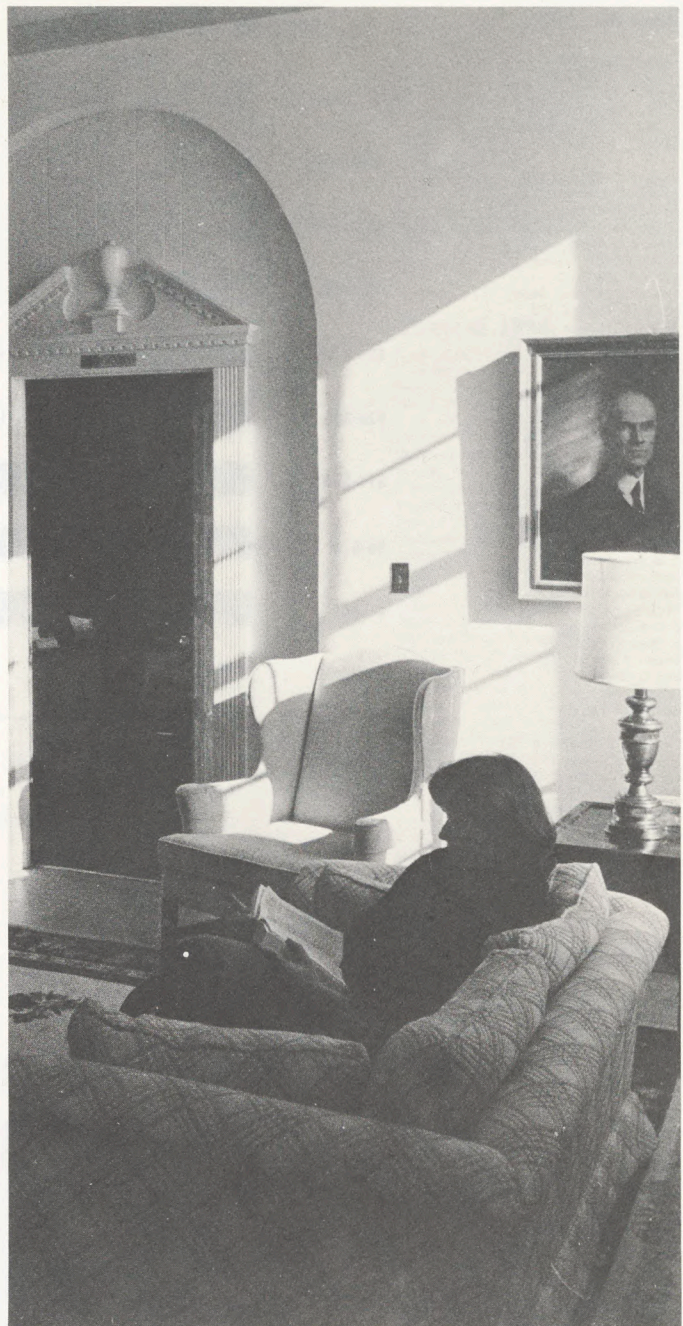
Class Chairman:
 Ava Neil Taylor Collins
 Number in Class: 71
 Class Participation:
 19 (38 per cent)
 Gifts: \$945.83

James A Auman (E)
 Mary Ann Coe Bland
 Betty Brady Campbell (E)
 Ava Neil Taylor Collins (E)
 William T Foister
 Jeanne Graff Garcia (E)
 Jo Ingram Goldston
 Marguerite Knootz Gupton (E)
 Melton E Harbin (E)
 Jessie Myers Hepler (E)
 Robert L Hutchens
 H Glen Lanier
 Nancy Clayton Meeks (E)
 Ruth Hull Plyler (E)
 Eugene E Pomplitz (E)
 Virginia Cohen Pomplitz (E)
 Frances Smith Schumacher (E)
 Estelle Smith Sheldon (E)
 Betty Marie Welch (E)

Class of 1946

Class Chairman:
 Raymond A Warlick Jr
 Number in Class: 58
 Class Participation:
 12 (31.6 per cent)
 Gifts: \$978.33

Sara Hutchens Brinson
 Marjorie Payne Daniels (E)
 Charles C Edwards Jr (E)
 Jack E Foster



Nellie Grey Inscore Foster
 Robert S Gayle (E)
 Alice C Gorman
 Herbert M Jamieson Sr
 Clarence C Keever (E)
 Frances Moore Murphy
 N L Oliver (E)
 Raymond A Warlick Jr (E)

Class of 1948

Class Chairman:
 Thomas H Elder Jr
 Number in Class: 140
 Class Participation:
 25 (17.9 per cent)
 Gifts: \$1,252.50

Adrienne Angel
 Harold C Austin
 Barbara Willis Beck
 Esther Dyer Bowles (E)
 Charlotte Churchill Brown (E)
 James C F Brown (E)
 A Wayne Cagle
 Valeria Kivett Cagle
 Billie Welch Callahan (E)
 J Harley Cecil (E)
 Janet Russell Clark (E)
 Robert N Eagle (E)
 Thomas H Elder Jr (E)
 James M Featherston Jr
 Allen M Gillie
 Beulah Hodges Haizlip
 Margaret Weant Haney
 L Frank Henry
 Dorothy Johnson Lane (E)
 Lynn Williard McInnis (E)
 Cranford O Plyler Jr (E)
 L B Pope (E)
 J Earl Richardson (E)
 Junny D Smith
 Lovedia Stewart Snow

Class of 1947

Class Chairman:
 Joel E Williams
 Number in Class: 83
 Class Participation:
 14 (24.1 per cent)
 Gifts: \$11,022.50

John C Adcock (E)
 Wincie Cagle Bowman (E)
 Carolyn Beam Branton
 Blanche Myers Bryant (E)
 Ethylene Ragsdale Charnock (E)
 Jewel Myers Cress (E)
 Beverly Burton Goldston (E)
 William D Goldston Jr (E)
 Hardy L Maxwell
 Martha Davis Modlin (E)
 Martha Minnis Myers
 Anna Ferguson Sprye (E)
 James D Terry
 Joel E Williams (E)

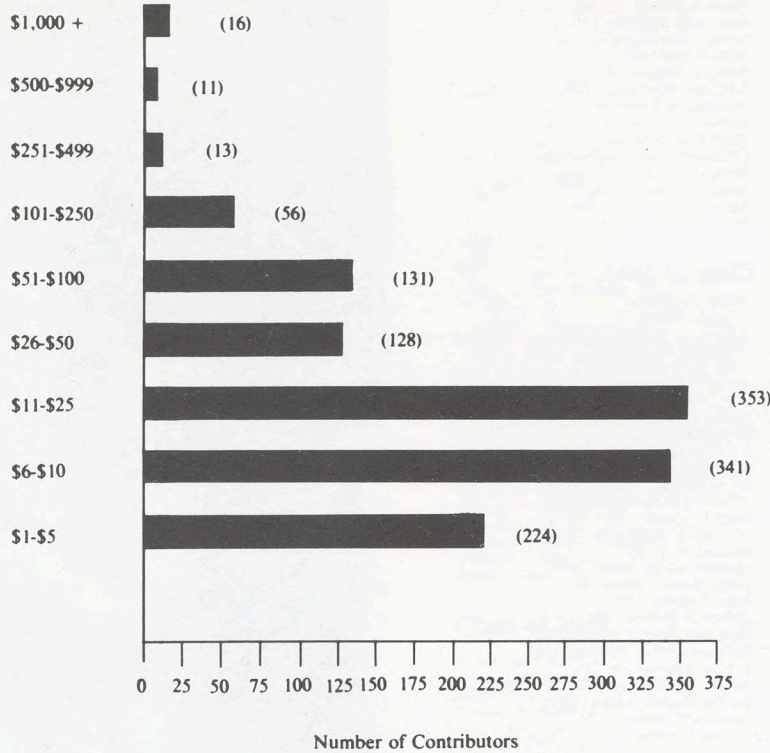
Class of 1949

Class Chairman:
James F Brewer
Number in Class: 257
Class Participation:
40 (21.1 per cent)
Gifts: \$1,990.00

Robert S Allred (E)
Gilbert L Arthur (E)
Robert J Ashmore (E)
Ovida Jane Lineberger Barber (E)
Howard H Bishop (E)
Nancy Ridge Bishop (E)
John B Blaylock
Frances Jackson Boone (E)
Billy L Boyles (E)
James F Brewer (E)
Gilbert S Callahan (E)
Jack W Charles (E)
James L Coble (E)
Robert F Cress (E)
William E Fitzgerald (E)
Michael B Fleming (E)
Robert A Fleming Jr (E)
Ardenal Haney
Eutha Spencer Hix (E)
J Richard Hix II (E)
Wanda Trogdon Ilderton (E)
Lena Thornton Jackson (E)
Frances Weaver Jordan (E)
R Harry Jordan (E)
Lester D Lane (E)
Lawrence S Leonard
Virginia Forward Leonard
J C McAllister Jr (E)
E Thad McInnis (E)
Orren R Mason (E)
Max L Meeks (E)
John S Oakley (E)
George A Parleir
Robert D Reed (E)
Charles K Saunders (E)
Arthur H Sheek (E)
Gurney L Stroud Jr (E)
Guy T Swain (E)
Paul C Williamson (E)*
Cameron P Winston

* Deceased

How The Fund Was Contributed



Frances Roberson Marlette (E)
Helen Maxine Swaringer Mast
W H Needham Jr (E)
Barry H Newsome (E)
Elaine Thompson Rapanos (E)
Mary Jean Newell Rhodes
Betty Miller Strickland (E)
Robert L Walker (E)
Peggy Phillips Wallace
Audrey Jean Stutts Wiggs (E)
Frank D Wiggs (E)

Class of 1955

Class Chairman:
David H Holt
Number in Class: 168
Class Participation:
24 (19.8 per cent)
Gifts: \$807.50

David M Abernathy (E)
Frances Hunter Adams (E)
Ralph F Anderson
Roy R Bevan (E)
Nancy Samuel Everhart (E)
David L Francis (E)
Shirley G Harris (E)
Sara Hamilton Haruyama
David H Holt (E)
Gladis W Kivett
Janie Merritt Lamb (E)
Barbara Benson Langford
Carolyn Adkins Myers (E)
Rita Jane Ward Needham (E)
Sue Gary Newsome (E)
Nancy Kennedy Nicholson
John R Peacock Jr (E)
Martha Hinson Richardson
Donald D Spencer (E)
James A Stanley
H D Stepp (E)
David L Wagoner (E)
Maxwell M Way Jr (E)
Margaret Wilson Young

Class of 1956

Class Chairman:
Lorraine McCurry Griffin
Number in Class: 191
Class Participation:
32 (23.4 per cent)
Gifts: \$2,233.50

William E Bost (E)
H Elizabeth Broome
William Y Burton (E)
Bernis L Cochran
Faye Peedin Collins (E)
Fred G Culler (E)
Betty Ann Tysinger Dawkins (E)
Koy E Dawkins (E)
Herbert D Dixon (E)
Ellen Torrence Elgin (E)
Garland S Gammon
June P Greene (E)
Lorraine McCurry Griffin (E)
Sarah Elizabeth Forbis Joyce (E)
Alfredo J Julian (E)
Emma Hartsell Julian (E)
Jerry R Kennerly
Ann Swanson Latta
Robert K Latta
Dorothy Hoots McCollum (E)
Vasso Cavas Millonas (E)
David O Moore (E)
Patricia White Moore (E)
James A Northington (E)
Duffy L Paul (E)
Jane Shelton Shaffer
Nancy Watson Shelton (E)
Fred A Southard Jr (E)
Libby Murray Stiffler (E)
R Hardy Tew
Gena Dickson White (E)
T Harold White (E)

Class of 1957

Class Chairman:
Mary M Stuart
Number in Class: 231
Class Participation:
31 (17.8 per cent)
Gifts: \$1,227.50

Walter Stan Baker Jr (E)
Stan C Broadway (E)
Jake L Clodfelter
Elwood Mack Conrad (E)
Sue Butt Cook (E)
Jackson D Dobbins (E)
Robert Olon Dockery (E)
Barbara Ann Edwards (E)
Betty Lord Francis (E)
Florence Fishel Hauser (E)
Katie Trivette Huff

Class of 1950

Class Chairman:
George W Thompson
Number in Class: 190
Class Participation:
33 (24.1 per cent)
Gifts: \$3,971.20

Hervey W Amick
Richard R Axley (E)
Richard J Bailey
Ann Stuart Boyles (E)
Willis L Brown (E)
Paul J Carter (E)
Foil V Charles (E)
Bill L Cheves (E)
G Carilton Clinard (E)
Lamarie McArthur Clinard (E)
Herman E Coble Jr (E)
John H Crowell (E)
Kenneth L DeHaven (E)
Clarence M Ilderton (E)
Lyles H Kearns (E)
William F Kemp (E)
Lawson L Lowder (E)
Bertha Lowe McGee (E)
Robert J Marley (E)
John M Matthews (E)
C Douglas Mayes (E)
Bill L Minor (E)
Lois Kreienbaum Moore
Edward L Myers
Norman B Nail
Zane G Norton
Harold W Ritch
T Haynes Scott Jr (E)
Laymon W Sprye (E)
George W Thompson (E)
Jo Anne Wyatt Thompson (E)
David Lewis Wilson (E)
C Fletcher Womble Jr (E)

Class of 1951

Class Chairman:
Murray M White Jr
Number in Class: 208
Class Participation:
30 (19.7 per cent)
Gifts: \$1,058.10

Jeanne Edmunds Acree (E)
Edwin L Auman (E)
Kenneth G Berrier (E)
Carl M Borum Jr (E)
Curtis R Bovender (E)
Jean Clontz Brotherton (E)

Fairy Ayers Clark (E)
Joseph F Dale Jr (E)
Mary Woodard Edwards
Stella Redding Ervin (E)
Lewis H Evans (E)
Robert B Glisson (E)
G Leon Green (E)
Emmett E Hiatt Jr (E)
Ernest J McPetters Jr (E)
James F McGee (E)
G Robert McKenzie
Richard D Meisky (E)
Barbara Cranford Payne
Charles W Payne
Kenneth M Poindexter (E)
Carlotta Autrey Warren Roberts (E)
Joyce Mills Robertson (E)
Ray M Shore (E)
William L Sowers (E)
Harold L Waters (E)
Murray M White Jr (E)
Mary Frances Hunter Williard (E)
Janie Bartlett Yates
Betty Jane Gibbs Zammit (E)

Class of 1952

Class Chairman:
Garland E Wampler
Number in Class: 178
Class Participation:
26 (20.5 per cent)
Gifts: \$1,942.50

Arlene Venable Antee (E)
Bobbie Wagoner Ashmore (E)
Frank D Cochran (E)
M Frances Dearman (E)
Laura DeHaven Dunn (E)
George S Erath (E)
William G Ervin (E)
Everett R Freeman (E)
Jeane Osborne Hendrickson (E)
Douglas R Holbrook (E)
William H Hunter (E)
C Kenneth Ingram (E)
Joyce Kearns Ingram (E)
Jeremiah F Johnson (E)
Jack H Klein (E)
Dixie Wilson Klemme (E)
A Keith Mobley (E)
Carlyle A Nance Jr (E)
T Adrian Neal
John C Riggs (E)
Bob L Robertson (E)
Ovid Kearns Smith (E)
W Sid Tayloe Jr (E)
Garland E Wampler (E)
Rodney T Yates
Ronie A York (E)

Class of 1953

Class Chairman:
Neil E Smith
Number in Class: 162
Class Participation:
32 (27.8 per cent)
Gifts: \$1,414.40

Nancye Clifton Anderson
Charles W Barnes (E)
Robert W Barrett (E)
Norma Jane Bogle Barrett (E)
Norman L Bowman Jr (E)
Garnie L Brendel
John R Bryson (E)
Betty Faye Hedgecock Campbell (E)
Viola James Craver (E)
R Palmer Day (E)
Gay Bloodworth Evans (E)
James A Fowler (E)
Devey Griffin
Harvey B Johnson (E)
Willie Davis Johnson (E)
Robert E Lowder (E)
Betty Blake McNeill (E)
Marion Fagg Moir (E)
Oren W Morton (E)
Robert L Oakley (E)
Bob L Parrish (E)
Jo Bundy Parrish (E)
John A Raper
William R Shaffer
John R Sills (E)
Lena Matthews Smith (E)
Neil E Smith (E)
Nancy Stone Smith (E)
Sallie York Ward (E)
Leo A Welch (E)
Ann Fleming Whitesell (E)
D Ray Wonsidler (E)

Class of 1954

Class Chairman:
Thomas M Charping
Number in Class: 164
Class Participation:
18 (14.4 per cent)
Gifts: \$1,382.50

James Clifton Berrier (E)
Jack J Bollinger (E)
Thomas M Charping (E)
Minnie J Crawley (E)
Travis F Hanes (E)
Betty E Hayworth
Donald T McNeill

A Ray Hughes (E)
 Lousie Farlow Idol (E)
 Mary Camilla Isley (E)
 Sylvia Bobo Jenkins (E)
 James W Johnson
 James H Joyce Jr (E)
 E Gene Kirby (E)
 Leon H Lee (E)
 Carl B Nigh
 Fred A Perdue Jr (E)
 John C Pierce
 Judith Williams Pierce
 William H Rule (E)
 Mariam Stallings Smith (E)
 Lousie Kennedy Stanley (E)
 Lloyd F Stiffler (E)
 Jerry W Stinson (E)
 Mary M Stuart (E)
 Cecil W Thomas Jr (E)
 Charles H Whichard (E)

Class of 1958

Class Chairman:
 Paul E Moss Jr
 Number in Class: 239
 Class Participation:
 27 (15.1 per cent)
 Gifts: \$736.50

Naomi Drum Bradley (E)
 Elaine Mills Broadway (E)
 Dulcie T Bryan (E)
 Kenneth A Campbell (E)
 Louise Pugh Corder (E)
 Mary Hinkle Doby (E)
 Robert L Foster
 Patsy Ann Hobbs Freeze
 Charles J Pulp (E)
 Theron T Gailey
 Jackie Holden Ivey
 Wilbur I Jackson (E)
 Roxana Putman King
 Judith Ward Lee (E)
 Luther W Livingston Jr (E)
 W Ronald Lucas
 Beverly Ann Deal McCabe (E)
 Fairrell D Myrick
 Murphy M Osborne Jr (E)
 Leon Safrin (E)
 Edwin H Shufelt (E)
 James E Smith (E)
 T Paul Starnes Jr
 David Stroupe
 Nancy Yapple Stroupe
 Thomas J Warren Jr (E)
 Elsie Oakley Wolf (E)

Class of 1959

Class Chairman:
 Floyd T Craven
 Number in Class: 231
 Class Participation:
 33 (19.3 per cent)
 Gifts: \$1,258.00

Terry R Alexander Jr (E)
 Addie Parker Baity
 J Kemp Bennett (E)
 Martha Turnipseed Berrier (E)
 J Ronald Black
 Donald Ray Bowers (E)
 Floyd T Craven (E)
 Frank D Daniels (E)
 Charles D Davis (E)
 Adrian B Delk (E)
 E Charles Dyson (E)
 M Gray Everhart (E)
 Joyce Ann Davis Falk (E)
 Patsy Moore Ginns (E)
 George W Ivey Jr (E)
 Thomas E Loftis (E)
 Aaron W Moss (E)
 Gordon D Nifong (E)
 Janice Solomon Osborne (E)
 Carolyn Koontz Pentz
 Ramona Leonard Phelps (E)
 M Annette Price (E)
 Shirley Yokley Rawley (E)
 Ronda L Robbins
 John K Roberts Jr (E)
 Barbara Ayers Sauls
 H Allen Surratt
 Wayne Veach (E)
 Dwight E Whitlock
 Sue Jackson Williams
 Robert E Williams (E)
 C E Winecuff
 Eleanor Evans Zentgraf

Class of 1960

Class Chairman:
 Betty Gray Dorman Brown
 Number in Class: 229
 Class Participation:
 30 (17.2 per cent)
 Gifts: \$810.50

Glenn E Anderson Jr (E)
 Otis C Boroughs (E)
 Katherine Wilson Brinkley (E)
 Keith D Dodson

Kay Carroll English (E)
 Mary Jean Peedin Garriss
 H Lloyd Ginns (E)
 William Q Goodman
 Elizabeth Peterson Hodge (E)
 Selena C Hoyle
 Charles T Johnson (E)
 Kathryn Traywick Johnson (E)
 W Reid Kearns (E)
 Eileen McIlvaine Koerner (E)
 Doris Talley Lucas
 Carolyn Tulloch Malczewski
 Richard B Mason
 Riley E Montgomery (E)
 Betty Baughn Phillips (E)
 Ben C Rouse
 Danny J Sewell (E)
 Shelby Williams Sewell (E)
 Sylvia Deaton Sims (E)
 Clegg D Speight (E)
 Hassel G Strader (E)
 Peggy Davis Thomas Jr (E)
 Billy R Tucker (E)
 W Thomas Warren (E)
 O Vernon Zimmerman (E)
 T Jack Zimmerman Jr (E)

Class of 1961

Class Chairman:
 Larry E Rogers
 Number in Class: 221
 Class Participation:
 22 (13.4 per cent)
 Gifts: \$630.00

David L Baxter
 Charles R Bledsoe
 Hilda Barbee Byerly (E)
 Gerard M Currier (E)
 Vicki Smith Dallas (E)
 E Vance Davis (E)
 Charles T Falk (E)
 Shelby Strickland Higgs (E)
 Gerald F Hill Jr
 Gayle Williard Hyatt
 Dell Conrad Johnson (E)
 Jacqueline Creech Kelsey (E)
 Alton D Lanier
 Lloyd Daryl McGuire (E)
 Gaye Wall Mann
 Emma Louise Noell Moss (E)
 James Preston Reece (E)
 Emma Pugh Routh
 Dale L Spinnett (E)
 Glenn F Stevens (E)
 Hazel Faye Green Surratt
 Bonnie Peele Yanchisin

Class of 1962

Class Chairman:
 Larry D Wilson
 Number in Class: 240
 Class Participation:
 20 (10.9 per cent)
 Gifts: \$537.50

Betty Beauchamp Benge (E)
 Tony M Benge (E)
 W Zane Daniel (E)
 J W Davis
 Alice Hobson Dudley (E)
 Thelma Mitchell Eichholz (E)
 Max T Furr (E)
 Rachel Scott Goodman
 Dale R Hodge (E)
 Leonard B Lewin
 Robert A Lloyd Jr
 M Laine Mashburn (E)
 Richard Maury Miller
 Gerald A Morgan
 Kenneth F Payne
 Gilda Cox Scott
 Dorothy Darlington Smith (E)
 Jean Barlow Taylor (E)
 George C Welch Jr (E)
 Larry D Wilson (E)

Class of 1963

Class Chairman:
 Donna Lawrence Staley
 Number in Class: 243
 Class Participation:
 35 (19.4 per cent)
 Gifts: \$710.50

Nancy West Alford (E)
 Judy Benge Anderson (E)
 Peggy Gilliam Auman
 Sidney E Bailey (E)
 Ted L Brazzell (E)
 Richard P Budd (E)
 Sandra Wilson Burns (E)
 D Donald Cashion (E)
 Patsy Flippin Cheadle
 William F Cope (E)
 Beverly Ann Crofts (E)
 Francis E Dail
 Menzette Donahue (E)
 Peggy Nichols Foister
 James William Gailey
 Barbara Perry Geddie
 Rayford B Grant (E)
 Walter K Griffin (E)
 Dora Jeffreys Lancaster (E)

Winfred E Lindley (E)
 Sara Ratliff Lloyd
 A Ray Murphy Jr (E)
 Elizabeth S Neale (E)
 Cynthia Fletcher Petrea (E)
 Glenda Williams Reece (E)
 Caroline Peck Sowder (E)
 Donna Lawrence Staley (E)
 William H Steed
 Fred L Stone (E)
 Eugene Freeman Street (E)
 Carlyle M Teague (E)
 Natalie Tunstall Tennant (E)
 John E Ward Jr (E)
 Marilyn Floyd Woodall (E)
 Ann Burns Yelton

Class of 1964

Class Chairman:
 Frank M Jarvis
 Number in Class: 200
 Class Participation:
 31 (30.4 per cent)
 Gifts: \$7,183.50

Milbrey Beland Bartholow
 Mickey W Boles
 Rosa Moore Coteses
 Donald M Dwiggins (E)
 Kathie Sturm Fallin (E)
 William D Fallin (E)
 Bobby W Fogleman
 Linda Ferran Gibson
 Frank M Jarvis (E)
 Robert D Kornegay (E)
 Jerry L Kyle (E)
 Marlene Brinkley Lambeth (E)
 Louise Stokes Lewin
 Gail Geyer Lewis (E)
 W Wayne Lewis (E)
 Carolyn McMasters Lineberry (E)
 Donald W Lineberry (E)
 Mary Lou Troutman Moose (E)
 Pauline Moss Morgan
 Carolyn Frye Munro (E)
 Carrie Whitehurst Parrish
 Carolyn Routh Patterson
 Thomas Roger Pike (E)
 I Wayne Pope (E)
 Patricia Poindexter Reed (E)
 Ellis Leroy Rouse Jr
 Sylvia Leckie Steed
 William T Tysinger
 Louella Richards Ward (E)
 George Richard Ware
 Gordon Yarborough (E)

Class of 1965

Class Chairman:
 C J Neal Lipski
 Number in Class: 247
 Class Participation:
 19 (10 per cent)
 Gifts: \$183.50

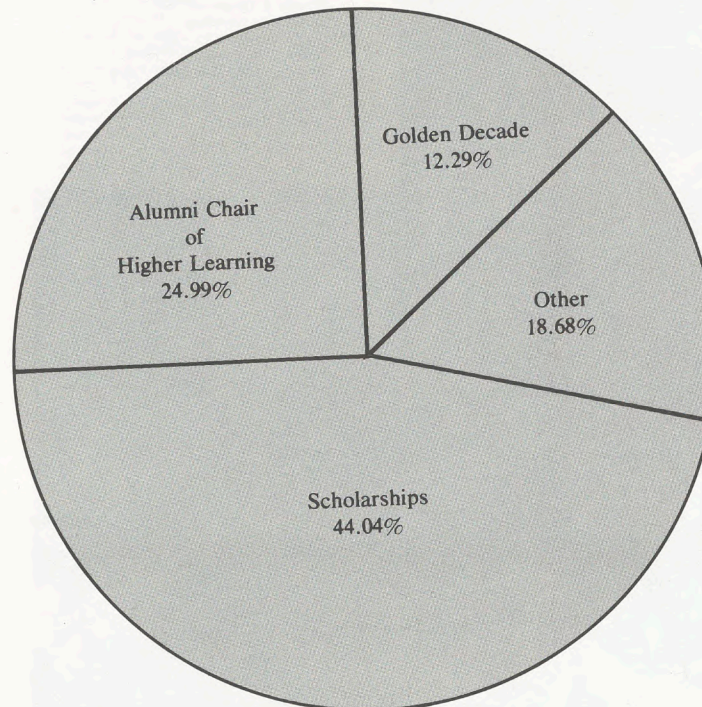
Sue Lynn Marion Cashion (E)
 Floyd L Berrier (E)
 Ronald G Berrier (E)
 Robert T Brennan
 Richard D Bulla (E)
 Michelle Schmidley Crawford (E)
 John B Farlow Jr (E)
 Franklin W Grice (E)
 Sylvia Shapiro Hyman
 Phyllis Giles Jarvis (E)
 Janet Doby Kemp (E)
 Frank S Lambeth Jr (E)
 Diana Teague Lorber
 Judy Lane Mashburn (E)
 Rickie W Mills (E)
 Janice Younts Myers (E)
 Billy Joe Parker (E)
 Kay DeMik Stewart (E)
 Kirk K Stewart (E)

Class of 1966

Class Chairman:
 Ned B Owens
 Number in Class: 247
 Class Participation:
 21 (11.3 per cent)
 Gifts: \$452.50

Thomas H Blake (E)
 Katherine Mimms Boles
 Myra Morris Buff (E)
 Stephen F Buff (E)
 Stuart M Hoyt Jr (E)
 James A Jones
 David L Kemp (E)
 Gene C Kester (E)
 William E Lang (E)
 Mary F Lawson
 Gail Raines Lindley (E)
 Joseph F Lorber Jr
 Mary Elizabeth Neese Moore (E)
 Harold M Moose (E)
 Richard W Olson (E)
 Ned B Owens (E)
 Ann Talley Parker (E)
 Mary Ruth Corder Parrish
 Raymond W Rogers (E)
 David L Sledge (E)
 Charles W Smith

How The Fund Was Used



Class of 1967

Class Chairman:
Angela Smith Davenport
Number in Class: 201
Class Participation:
18 (11.6 per cent)
Gifts: \$375.00

LaRue Leonard Cline (E)
Angela Dee Smith Davenport (E)
Wayne D Ervin
Sarah Green Finch
Thomas Glenn Finch
Robert E Hamilton (E)
Dina Steed Harris
Lois Jean Mainvaring Houpe (E)
Laura Lenz MacArthur (E)
Larry K Matthews (E)
Betty Jo Vaughn Mills (E)
Edgar H Nease Jr
Laura Coltrane Smith
James W Stitt (E)
Douglas A Thayer (E)
Robert P Weiss II (E)
Laurie Dee Abbott Wilson
Linda Holton Wright (E)

Class of 1968

Class Chairman:
Jonathan L Faulkner
Number in Class: 231
Class Participation:
19 (11 per cent)
Gifts: \$404.50

Margaret Matthews Botsch
Billie Allen Brewer
Betty Sanderford Church
Paul D Ensley
Jonathan L Faulkner (E)
Mary Klausman Garland (E)
Judith Carlton Greer (E)
Claudia Payne Grice (E)
Lynn Edmonds Hamilton (E)
Elizabeth Anne Horigan (E)
Nancy Taylor Loewenthal (E)
Lynn Wood Miller
Katharine Newman
Judson C Richardson III
Diane Abbott Steele (E)
Charles P Teague (E)
Forrest S Wagoner II (E)
Randolph P Waugh (E)
Shelby Jean Wilkes (E)

Class of 1969

Class Chairman:
P Scott Owen Jr
Number in Class: 310
Class Participation:
37 (15.7 per cent)
Gifts: \$1,107.50

Jane Wagner Baity (E)
Judith Kievning Bonnaffon
Raymond A Baity (E)
Clarence R Conrad (E)
Anne B Cooley

Lynda B Corn (E)
Thomas J Crouch
H Wayne Eddinger (E)
Joel W Farlow (E)
Laird M Freeman (E)
William L Harding
Sharon Lynn Baker Miller
Elaine Murphy Hodgkin
Fred C Hughes (E)
Diane Niland Jones (E)
Linda Huff Lineberry (E)
Ronald L Loewenthal (E)
Jonathan H Mann
Marcia Ranier Marshall (E)
Paul Scott Owen Jr (E)
Judy L Parker (E)
James P Payne (E)
Grethen Lynch Phillips
Barbara Mize Price
Virgil C Reid Jr
Charles C Rock
Dennis Hall Sigmon (E)
C M Stallings (E)
Patricia Wimbish Stallings (E)
William A Stewart
Diane Lewis Sutphin
Phyllis Haddock Talley
David M Tuxhorn
Gail Hetherington Wagoner (E)
Linda Mellette Weiss (E)
Frances Matthews Zumbro (E)
Val E Zumbro (E)

Class of 1970

Class Chairman:
Richard H Boyd
Number in Class: 299
Class Participation:
29 (13 per cent)
Gifts: \$3,602.50

Robert H Bagwell
Mary Sue Bogue Beamon
Ted W Belch (E)
Shirley Yoe Bessent
David B Bishop (E)
Robert A Bonnaffon
Teresa G Botts (E)
Richard H Boyd (E)
Nancy Berryman Castorr
Martha Payne Cecil (E)
Daniel M Culp Jr (E)
J Sidney Downey (E)
William S Fagg III (E)
Martha Thomas Grimes (E)
Warren L Grimes (E)
Martha Matthews Hardee (E)
Ellen Teague Hartman (E)
JoAnn Moore Kelly
Robert B Lathan (E)
Judith Harris McCracken (E)
Kevin B McCracken (E)
Steve Matthiesen
Nido R Qubein (E)
Douglas E Smith
Sharon Shackelford Stewart
Tony S Townsend Jr (E)
Nancy Beamer Tuxhorn
Robert P Williams
Wayne E Woodell (E)

Class of 1971

Class Chairman:
Beth Holcomb Sigmon
Number in Class: 248
Class Participation:
26 (13.8 per cent)
Gifts: \$302.50

Gary E Austin (E)
John H Boles II (E)
Susan Euler Cole (E)
James L Crawford III
Donald L Davis (E)
Cheri Palermo Goner
Ellen E Grassi (E)
Linda Hinkleman Gunter (E)
Russell A Jones (E)
Michael S Koch (E)
Carol Myrick Long
Mary Ann Nichols Mann
Gary B Moore
Lynda Long Mulvany
Melinda Peabody (E)
Claudia Jordan Philpott
James E Price
Linda C Reed (E)
Carolyn Leatherman Richardson
Patrick E Richardson
Ronald W Schoeffler
Beth Holcomb Sigmon (E)
Karen Daune Ward Teague (E)
Gary L Wegner (E)
Elizabeth Ann Snead West
Susan Jackson Woodruff

Class of 1972

Class Chairman:
John A Young
Number in Class: 256
Class Participation:
19 (9.6 per cent)
Gifts: \$497.50

Lindsey Smith Baer (E)
Linda G Bagby (E)
Nathan Cagle Jr
Linda Stemple Cagle
Thomas A Carter (E)
Susan Greenhaugh Christman (E)
Patricia Gail McDowell Dawson (E)
David J Eichlin (E)
Deborah Chappell Foskey
Robert W Gilliland (E)
Cindy Foster Goodgame
Edward F Grune Jr (E)
Jana Owen Harding
Doris Price Hill (E)
James V Hughes (E)
Beverly Stoddard Koch (E)
Sheryl Thompson
Ginery M Twichell (E)
John A Young

Class of 1973

Class Chairman:
David T Wilson
Number in Class: 249
Class Participation:
21 (11.2 per cent)
Gifts: \$1,326.50

Timothy H Allen (E)
Patricia Kay Pressley Aylmer (E)
Cynthia Dick Brooks (E)
Lloyd H Davis III
Rex L Gibbs
Suzanne Moody Gillispie
Walter S Hill
Jeanette Jones Kiem (E)
John C Kiem (E)
Judy Schneider Kit
Judith Morris Kooztz (E)
Robert M McElvany
Larry W Nelson
Maureen E Oakes
Alphonsus Obayuwana (E)
Frances Roach Sink (E)
Cathy Parris Stevenson
Deborah Stamper Thomassen
Linda Sue Lewis VonCannon (E)
Virginia Dix Wilson (E)
Paul Johnson Woodward (E)

Class of 1974

Class Chairman:
Bruce B Tingle
Number in Class: 245
Class Participation:
17 (9.3 per cent)
Gifts: \$205.00

James D Allred
Laura Maria Villegas Barnhart
Joseph D Beach Jr
Nancy Marlow Bunch
Dennis G Carroll
Linda Barnes Chilton
Elaine F Conklin (E)
Jeanne Sentman Davis
Wayne F Dietz
Ellen Whayland Dietz
Michael Wayne Long
Ronald T Machlin (E)
Edward Rhame
James E Sheets
Gurney L Stroud III
Bruce B Tingle (E)
Daniel S Wall (E)

Class of 1975

Class Chairman:
Stephen L Lawson
Number in Class: 225
Class Participation:
24 (14 per cent)
Gifts: \$427.50

Morris Sid Adams (E)
Bonnie M Beasley (E)
Mary Clark Cole Branch (E)
Timothy D Branch (E)
Ann Williams Brinson (E)
Richard I Brooks (E)
Bill Ray Burchfield (E)
Cathy E Calloway (E)
Keith B Carlson (E)
James W Coble (E)
George W Ferguson (E)
Marion H Gibson Jr (E)
William Bruce Gray Jr (E)
Paul A Hufschmidt
Susan Tsikerdanos Hufschmidt
Phoebe Dillard Jarmon
Theresa Hartman Langley (E)
Stephen L Lawson (E)
Douglas A Moore (E)
Anne L Stanfield (E)
Cynthia Lynn Stocker (E)
Alice Wilson Brown Stout (E)
Peter J Taylor
Henry A Thomas

Class of 1976

Class Chairman:
Robert E May
Number in Class: 224
Class Participation:
17 (10 per cent)
Gifts: \$367.50

Karen M Adams
Johnny D Amos
Bonita L Baldus (E)
Janet Jaenke Bash
Jerry C Burns (E)
Karen Kruyer Glover
Michael Glover
Ann L Hart
Bob R Heilig Jr (E)
William H Hundley III (E)
Mary Lou Perryman Kyle (E)



Theodore E Landis
Deborah Jean Madden
Howard F Mann
Robert E May (E)
William Carvin Stout Jr (E)
Patricia L Wright

Class of 1977

Class Chairman:
Sid P Baker
Number in Class: 201
Class Participation:
44 (24.6 per cent)
Gifts: \$122.50

Anna Verkouteren Allen
Clyde W Allen
Leland S Averett III
Charles E Burroughs
Barbara Bolton Caldwell
Martha W Campbell
Rebecca Butler Coble
Philip L Dagostino
Beverly Joe Duncan
Denise A Everhart
John C Fulp
Philip Allen Geiss
Steven Allen Gray
William A Hall
Brenda Dianne Hege
Herald H Hughes III
Jean Hodgkin Isreal
Marsdon S Johnson
Ronald Anthony Johnson
Gilbert G Jones
Kevin W Klass
Sally Myers Landis
Michael Ludvigson
Janey Beth MacFawn
Susan Wertheimer McCormick
Nancy Burns McNeill
Paul D McNeill
Janice Lee Manuel
James R Merriam
Mark Steven Miller
Larry S Morris
James Petraglia
Andrew J Pinchac Jr
Marina Hakim Qubein
Barbara G Rankin
Betsy Brodie Roberts
James Preston Sawyer
Stephen B Schirm
Darryl Lee Schoch
Pearlee Shaw Jr
Elizabeth A Sherron
Patricia Upton Smith
Frank E Stearns Jr
Diane M Zapotosky

Class of 1978

Number in Class: 204
Class Participation:
204 (100 per cent)
Gifts: \$98.40

Margaret E Adcock
Rebecca I Albright
Antonette Alonzo
Martin Amis III
Sara O Amos
Judy Lynn Ashe
G Milton Auman
Kathy E Avery
Brenda J Barton
R Malon Baucum
Wayne E Benjamin
Bruce K Berrier
Steven B Bisbing
Randy M Eledsoe
Donald G Bowles
Lisa A Boyles
Eleanor Branard
Patti M Briggs
Eddie C Brinkley
Regina P Brooks
Roger D Bryant
Terrance A Buker
Randy B Bunnell
Teresa D Burdette
Wendy S Burks
Cynthia L Burns
Jeanne Kidd Burns
Jeffrey G Burrell
Debra L Burrows
Kendalle Bzdek
L Stanley Cairns
Randy J Callahan
Pamela L Callicut
Gary W Carrico
Christie L Carroll
Cynthia Bollinger Carroll
William B Carry
Allen W Carter
Elizabeth Cartwright
Joey C Caviness
Douglas F Challenger
Kenneth R Clair
Dee Ann Clapp
John J Collett III
Robyn B Cooper
Susan McKnight Cooper
Thomas B Cope

Kevin R Copley
Hilary J Cornatzer
Leonard T Cranford
Kathy D Creed
Walter E Culbreth III
Gary A Deal
Baldus F Deaton Jr
Ricky T DeLappe
Jill W Dorsett
David L Elkins
Joan Turner Ellis
Robbie L Ellis
Aydlette James Eure II
Donald W Everhart
Douglas P Failing
F Nanette Falls
Myra V Faulkenberry
Vander J Flowers Jr
M Susan Forman
Ottis Foster Jr
Kim R Freeman
Patricia S Frey
Susan M Gallup
Cynthia M Gates
Kenneth E Gibson
Donald A Gilliam
Bruce E Gouge
Edward A Grandpre
Jack C Griffith Jr
Kevin G Gudzak
H Stanley Hackney Jr
William F Haley III
Timothy L Hall
Zeb M Hanner
Timothy D Harper
J K Hayman III
D Celeste Hazell
Richard M Hearn Jr
Kathy Ann Loflin Hedrick
Nancy K Heines
Susan Gail Daniels Herring
David R Hiatt
Robert D Hicks
Paul P Hildreth Jr
Stephanie D Hill
Ricky E Hines
Janet S Hinkle
Karen R Hirschi
M Beth Holt
Paige L Horrocks
Edmund P Houde
C Reid Idol
Judy Cutler Matton Ingram
Margaret E Jarzynski
Debbie G Jenkins
Susan E Jeno
Annette Lynn Johnson
Deborah L Johnson
Donna J Johnson
Glenn O Johnson
Kenneth B Keiser
Jon E Kemp
Lori Jean Kennedy
W Richard Killoran
Pamela L Kinney
Kathy L Kiser
Janice L Kleckner
Lynn B Krause
Ellen F Kunkel
Randy T Ledbetter
William R Lee
Terry J Limbo
Valerie L Luedke
Donna K Luff
Donna J Lyman
Germaine Y McAuley
Robert U McClaren
Lewis B McCraw
Mary Ann McNamara
Melville G Mahler
Joseph D Mann
Jan W Marinus
Angelyn Marlette
Kathryn L Martin
Dana J Merryday
Mark D Middleton
Phillip A Miller
Wilma Moran
Lawrence G Myers Jr
Carol Neary
Jeffery E Nelson
Elizabeth Ann Fulk Newsome
Patricia S Niven
Cheryl D Nowicki
John M Nurney Jr
Robert A Obrien
Jose A Oller
Faith U Osayame
Katherine L Parce
Tricia Parks
Pamela A Pavco
Rebecca A Peeler
Elizabeth Pennington
Susan E Perkins
Sylvia Petrea
Gerald A Plotz
George B Poppe
Caryl M Porte
Gordon B Potter Jr
William H Quigley
Francisco L Raffucci Morales
Joseph A Ramsbotham
Daniel M Ramsuer
Sybil K Richardson
Margaret B Rogers
Patricia A Rusenko
Wendee L Saintsing



Dannay M Savvas
Wayne C Schneider
Daniel L Schurz
Catherine E Shaw
Richard L Shook
Karen A Silverthorne
Sara Jane Sims
Cynthia Boyd Sizemore
Martin W Slater
Judy L Smith
Pamela M Smith
Michael J Salteri Jr
Sharon E Stanback
Martha L Starling
Douglas R Stephens
Casandra L Stusnick
Joel R Swope
Robyn G Taylor
Bruce M Turner
Timothy E Tysinger

Larkin S Tysor
James T Van Horn
Gary L VanLandingham
Paula L Venuto
Gale E Wall
Lucretia Penry Walter
Debra L Ward
Christopher A Ware
Holly Ann Waye
Keith A Weatherman
Donna M Welsh
Susan E Whetstone
Mary Cavan White
Pamela J Wiese
Deborah A Williams
Lawrence D Williams
Kevin S Wilson
Andrew M Wubbenhorst
Suzette B Wurster
James L Yow

Associate Members

Ms Janice Kay Andrews
Alpha Theta Psi Sorority
Altrusa Club of High Point
Miss Virginia Blount
Miss Marcella Carter
Miss Irene Coe Cannon
Ms Mabel Cherry
Mr and Mrs John Diffendal
Miss Frances Jane Douglas
Mrs Paul R Ervin
Mr W Derald Hagan
Mrs Clara P Harrison
Miss Louise Hatch
Mrs Lucile Cullers Herr (E)
High Point Chapter of the High Point
College Alumni Association
Mr and Mrs J E Horney
Mr and Mrs Herbert Huggins (E)
Miss Lula Lee Huggins
Mrs Polly H Ivey
Ms Robin L Jones
Mr Charles L Kearns
Mr Allen S Knott (E)
Lambda Chi Alpha Fraternity
Mr and Mrs M T Lambeth
Mrs Estelle C Laving
Mrs William C McGee
Mrs Charles T Parker (E)
Mrs Katie M Rankin
Mr and Mrs J W Rives
Mrs Charles C Rock
Miss Helen M Sicheloff
Mr and Mrs W C Sicheloff
Mrs Willis H Slane
Mrs A M Utley
Ms Wanda Walker
Mr Jesse Washburn *
Mrs Jesse Washburn
Mrs Robert E Williams (E)
Mr William F Womble
Mr Elliott S Wood
YWCA Business and Professional Club

* Deceased

Honorary Members

Allen P Brantley H'51 (E)
Charles F Carroll H'52 (E)
Thomas A Collins H'62
Richard Crowder H'76
Edgar B Fisher H'56 (E)
Ernest A Fitzgerald H'68
Thomas S Haggai H'65 (E)
Leo J Herr H'69 (E)
Arthur A Kale H'51 (E)
Edward Mendenhall H'66 (E)
George P Robinson H'77
Phillip L Shore Jr H'62 (E)
Capus M Waynick H'63 (E)
Wilson O Weldon H'52 (E)
N P Yarbrough H'74 (E)

Friends Individuals

Mr William F Aldridge
Miss Jennifer E Alley
Dr & Mrs J H Allred
Mr Warren L Anderson
The Rev Chester J Andrews
Anonymous
Mr John D Armstrong
Mr & Mrs Robert R Aylmer
Mr & Mrs Frank E Barham
Ms Jean L Barnett
Dr & Mrs James H Bash
Mr & Mrs Quentin Bates
Mrs Bessie Smith Blackwell
Mr & Mrs Lynn C Blackwood Sr
Mr & Mrs John Blum
Mr J Henry Boyles Jr
Mr Arthur Brewer
Mr Stanford R Brookshire
Mr & Mrs S Weldon Brown
Mr N Kelly Bullard
Mrs Jane Burton
Mr R B Byrd Jr
Mr Jack H Campbell
Mr & Mrs Nova Caraway
Dr Leonard R Cashion
Mr Frank Caulfield
Mrs Foil V Charles
Mrs Gilbert H Clinard
Mr & Mrs J Clarence Coggin
Dr David W Cole
Mrs Lela H Coltrane
Mr Earl E Congdon
Mrs J Robert Connor
Ms Cheryl D Cooney
Mr & Mrs E F Craver Jr
Mrs J P Crowder
Mr Earle G Dalbey
Mr R Frank Dalton
Mr Paul Darby
Dr William L DeLeeuw
Mr & Mrs E W Dinkelacker
Ms Katie Dunn
Mrs Frances Loftin Eagle
Mr Keith W Eisberg
Mrs Collier Ellis
Mr T R English Jr
Miss Helen B Eshelman
Mr Willie Etheredge
Mrs Frank L Fairchild
Mr Faiz R Faizi
Mrs A Mitchell Faulkner
Mr & Mrs Louis J Fisher
Dr Austin P Fortney
Mr & Mrs John C Foy
Ms Francine Froneberger
Mr & Mrs James L Fuller
Dr Charlie Q Futrell
Mrs Leola S Garrett
Mr Frank Gay
Mrs Karl R Gentry
Mrs L W Gerringer
Mrs L W Gerringer Jr
Mr & Mrs W O Gerringer
Mr C Horton Godwin
Mrs Ted Goldsmith
Dr & Mrs Inslee E Grainger
Mr & Mrs Theodore R Groom
Mr Wilbur Groome

Mrs Elsie Gummersheimer
Mr Charles F Hartman
Mr C Felix Harvey
Dr David B Hawk
Dr & Mrs L M Hays
Mrs Laverne I Hendrix
Mr & Mrs J W Hetherington
Dr Nancy Hewlett-Romer
Dr Fred W Hill
Mr and Mrs W Gifford Hoag
Mr & Mrs James H Hogg
Mr Carter T Holbrook Jr
Mr & Mrs Walter C Huber
Mr Lloyd O Hughes
Mr Manyon L Idol
Mr & Mrs Edwin A Jaenke
Mrs Leona Jaenke
Mr & Mrs Paul E Johnson
Mrs Pauline B Kayser
Mr & Mrs William Robert King
Mrs Janice Kinley
Mr & Mrs O Arthur Kirkman
Mr C H Kruyer
Ms Nausica Ledbetter
Mr William B Lee
Mr F L Lindsay
Mrs Helen R Lindsay
Mr & Mrs Ed Lofthouse
Mrs Mary Elizabeth Long
Dr & Mrs William J McAnally Jr
Mr C W McCrary
Mr Rick McKinney
Mrs French McMillan
Mr & Mrs J B McNett
The Rev & Mrs T H Mackintosh
Mr & Mrs Malcolm Macley
Mrs Josephine W MacMannis
Mr Legette Marshall
Mrs Laszlo Medgyesy
Mr & Mrs James Q Miller
Mrs Jesse E Millis
Mr & Mrs B A Moser
Mr & Mrs Frederick C Mosher
Mr & Mrs O'Connell
Mrs Lucy H Olsen
Ms Anne B Orren
Mr & Mrs H R Pancoast
Mr Robert H Patton
Dr Wendell M Patton
Ms Mary H Payne
Dr Edward T Piacentino
Mr J Edward Pleasants
Mr Raiford M Porter
Mrs Melva T Price
Mr James R Pritchett
Mrs W Frank Redding Jr
Mr Bill J Reid
Mrs Brooks Reitzel
Mr Joseph W Robinson
Mr Arthur Roy-Stella
Mr & Mrs Jack Rupert
Mr W H Seawell
Mr & Mrs O T Shaffer
Mr Robert H Shaw
Mrs Mahlon Sheller
Mr William R Shelton
Mr Robert M Silver
Dr J E Slate
Dr Marvin L Slate
Mrs Mae P Smith
Mr & Mrs Harry A Snyder
Mr & Mrs R E Spainhour
Dr T M Stanback
Mr & Mrs Ralph M Stockton Jr
Mrs Emily Sullivan
Mr & Mrs W A Swain Jr
Mrs Peter J Taylor
Mr Willis Tobler
Mrs P H Tompkins
Mrs Linda Vickers
Mr Arvil VonCannon
Mr & Mrs W L VonCannon
Ms Evelyn Walls
Ms Lola Ward
Mrs Lucy Washington
Ms Bonnie A Wasmund
The Rev & Mrs Roy E Watts
Dr Owen M Weatherly
Dr Leo Weeks
Mr George C Welch
Dr Carl M Wheelless
Mrs Margaret H Whitaker
Mrs J C Wyllie
Dr Fred T Yeats

Corporations

Alderman Company
Alma Desk Company
AMP Incorporated
(Hatteras Yachts)
Banner-Trulove Company
Broyhill Industries Inc
Ken Campbell Inc
Carolina Container Company
Carolyn Fabrics Inc
Cartwright Inc
Central Savings Bank
Childers Concrete Company Inc
The Children's Home Inc
Davidson Laundry Inc
Dixie Container Corporation
Dixon Odum & Company
Dobbins Electric Company Inc
Electric Supply Inc
Erath Sales Company
First-Citizens Bank & Trust Company
First Union National Bank
Flav-O-Rich Inc
Food World Inc
General Electric Company
Guilford Optical Company
Hardee Lumber & Builders Supply
Harris & Covington Hosiery Mills Inc
Haywood & Rankin Inc
Highland Motors Inc
High Point Bank & Trust Company
High Point Chemical Corporation
High Point Enterprise Inc
High Point Systems Company
High Point Woodworking Company Inc
Household Finance Corporation
Hunter & Company of N C Inc
Jones & Peacock Inc
KayLyn Inc
Kiddie Tot Hosiery Mill Inc
Libby Hill Seafood Restaurants Inc
McEwen Lumber Company
Marlowe-Van Loan Sales Company
Marsh Furniture Company
North Carolina National Bank
Oakdale Cotton Mills
Old Dominion Freight Line
Perpetual Savings & Loan Association
D L Phillips Investment Builders Inc
Piedmont Natural Gas Company Inc
Piedmont Savings & Loan Association
Nido Qubein & Associates Inc
Ralph's Frame Works Inc
Scott Paper Company
Slane Hosiery Mills Inc
Snow Lumber Company
Solon Automated Services Inc
Thayer Coggin Inc
Tobias Inc
Wachovia Bank & Trust Company
Wagner Veneers
Wallace Construction Company
Calvin White & Associates Inc
White & Wood Inc
Geo T Wood and Sons Inc
Woodmark Originals Inc
Yarborough & Company
Vann York Pontiac Inc
Young's Furniture & Rug
E E Younts Inc

Matching Gifts

Individuals who are employed by 690 companies and corporations in the United States have the opportunity of matching their gifts to Universities and Colleges through their employers.

The following companies matched gifts of employees given to High Point College during the past fiscal year.

Aetna Life and Casualty
American Brands Inc
American Credit Corporation
Burlington Industries Foundation
Digital Equipment Corporation
Equitable Life Assurance Society
Exxon USA Foundation
General Telephone & Electronics Corporation
Gulf Oil Corporation Foundation
Hercules Incorporated
International Business Machines
Integon Foundation Inc
Jefferson-Pilot Corporation
Jefferson-Pilot Broadcasting Company
The P Lorillard Company Foundation
(Loew's Theatre Welfare Fund)
Metropolitan Life Insurance
National Life Insurance Company
J C Penney Company
Phillip Morris Inc
Prudential Life Insurance Company
of America
Rexham Corporation Foundation
Sandoz-Wander Inc
Westinghouse Education Foundation

Foundations

American Humanics Foundation
The Bernard Foundation
Crumpler Foundation Inc
Dacotah Foundation Inc
Felix Harvey Foundation
The Thomas F and Clementine L Mullan
Foundation Inc
Porter Brothers Foundation
Z Smith Reynolds Foundation Inc
Sears Roebuck Foundation
South Carolina Foundation of
Independent Colleges Inc
(Milliken and Company)
Sigmund Sternberger Foundation Inc
THA Foundation
The Thomas Foundation
Thomasville Furniture Industries
Foundation
Winston-Salem Foundation



Miscellaneous

ABWA Blandwood
 ABWA Wooden Spool Chapter
 Albermarle Hospital Woman's Auxiliary
 Applied Physics Laboratory
 (Johns Hopkins University)
 Boy Scouts of America
 Charlottesville #19
 Brandywine Lioness Club
 Brandywine Lions Club
 Estate of Carey W Carrick
 Christ United Methodist Church
 Christian Fellowship Class
 Davidson County Church Ext Fund
 Delaware Dept of Public Instruction
 Eastern Randolph High School
 Edneyville School
 Estate of Lindsay Frazier
 High Point Chapter Alumni Association
 High Point College Educational Foundation
 High Point College Womens Club
 High Point Monthly Meeting of Friends
 Estate of John D Idol
 Independent College Fund of N C
 Jacksonville Senior High School
 Estate of J T Johnson
 Estate of Lena Best Brooks for
 Emily Brooks Kirkman
 Kiwanis Boys & Girls Inc
 Lambda Chi Alpha Fraternity
 Madison Junior Service League
 Medical Auxiliary Scholarship Fund
 Mount Pisgah United Methodist Church
 Marion Workman Class
 Myers Park United Methodist Women
 Navy Relief Society
 New Mount Olive Baptist Church
 North Carolina Lions Association for the
 Blind Inc
 North Carolina National Guard
 North Forsyth Senior High School
 Palmetto Florida First United Methodist
 Church
 Peninsula Conference United Methodist Chh
 Shelby Central United Methodist Church
 Hanson Mabry Towery Scholarship Fund
 Estate of Margaret Edith Smith
 Estate of Grace Rosamond Smith Spainhour
 Surry-Yadkin Electric Membership Corporat
 TPA of America Post D Board
 U A M E Scholarship Fund
 The United Methodist Church
 Western North Carolina Conference
 United Methodist Women
 Estate of John H Vickers
 Westford Academy
 Westford Academy Athletic Boosters
 White-Martin Scholarship Fund
 Wilmington Delaware Branch of AAUW
 Winston-Salem Highland Presbyterian Church
 Women's Golf Association of Emerywood
 Country Club

Panther Club

The High Point College Educational Foundation undergirds the total athletic program of the College with a variety of gifts and projects. Membership in the Panther Club, as the Foundation is known, is open to any friend or alumnus of the College. The designation of Grand Panther (indicated by an asterisk) is given to those who contributed \$100 or more to the work of the Club.

M Louise Adams '29
 Fil Aldridge Jr *
 Max Aldridge *
 T K Amos *
 Pete Armstrong *
 Atlas Travel Service In
 David W Auman * '53
 Edwin L Auman * '51
 Ellis E Baker Jr * '66
 David A Bean * '59
 Brenda Beck
 Beeson Hardware *
 Black Furniture Co *
 John D Bridgers
 Wanda Briley
 J Wray Brower * '50
 Richard P Budd * '63
 Harold D Bull * '58
 ** J L Bull Jr * '50
 W Darrell Bulla *
 R Douglas Callicutt
 Kenneth A Campbell '58
 Jack H Campbell *
 Raymond Carr *
 Carter Development Inc *
 Charles D Cecil *
 G Carlton Clinard * '50
 L James Cline *
 D Kermit Cloniger '36
 David W Cole Jr '68
 W Carson Cox * '59
 Robert Crawford *
 Earl Crow
 Dick Culler Jr *
 R G Culp Associates Inc *

William P Davidson * '62
 James N Davis * '62
 Gordon S Eaves *
 George S Erath * '52
 Tom R English Jr *
 William C Ervin * '52
 Michael B Fleming * '49
 Furnitureland Fabrics *
 R Frank Gay Jr *
 Frances Gaynor
 ** Wesley W Gaynor '54
 Occo D Gibbs '38
 M Woody Gibson Jr * '75
 Bob Glover *
 Michael Glover * '76
 Bill J Green
 G Leon Green * '51
 Thomas S Haggai H'65
 Richard D Hartley
 Dallas H Hauser
 Lewis Hayworth
 Henley Paper Company
 Leo J Heer '69
 Ricord Inc Insurance *
 High Point Woodworking Co Inc
 James R Hix III '49
 W Randall Hobbs *
 Carter T Holbrook *
 L H Hollingsworth *
 R L Honbarrier Jr '51
 E H Howe *
 George W Hutchens *
 Terry R Hutchens
 Clarence M Ilderton '50
 Carter D Ingram
 Charles T Ingram Jr *
 Larry D Johnson '71
 McKinley V Jurney * '69
 E Eugene Kirby '57
 Cletus H Kruyer
 Leslie W Lamar '42
 C S (Sammy) Lambeth *
 R Fred Lambeth *
 Neal R Lancaster *
 Bernie Lasine *
 Robert K Latta * '56
 Glad S Lawson '51
 W H Lee *
 Tony Libertore *
 Wayland H Linthicum Jr * '48
 William R Locke
 Daniel Lynk *
 E F McDaniel *
 Joe Marion *
 James P Marsh *
 Reid Marsh
 Gene A Miller *
 J H Millis *
 David R Mills *
 Bill L Minor * '50
 Harold M Moose * '66
 Mary Lou Moose * '64
 Dale Morey *
 Graham Morgan *
 Nobe Mullican *
 National Electronic Card Co *
 Daniel R Odom * '60
 Murphy M Osborne Jr '58
 Bob L Parrish '53
 Alan Patterson
 A Glenn Payne * '44
 Piedmont Wholesale Company *
 Jerry Piper *
 J Edward Pleasants *
 Joseph A Price * '52
 William E Price * '34
 J Clyde Pugh '31
 Robert B Rankin * '38
 Jack R Ridge * '52
 George P Robinson *
 J Wilson Rogers '37
 Larry E Rogers * '61
 Wayne A Ruth * '58
 Samet Construction
 Randall A Samuels * '70
 Marvin Sandifer '56
 James W Saunders *
 William R Shaffer * '53
 Frank H Shaw
 Lee W Sherrill * '37
 Richard A Short '40
 Tom Short *
 Simpson-Collield Insurance *
 Homer L Smith * '53
 Southern Furniture Market Center *
 Jerry Steele *
 Hestley D Stepp '55
 Mildred B Stevenson *
 Three Associates *
 Billy R Tucker '60
 W Edgar Turner * '51
 R W Turney Jr *
 US Furniture Industries
 Arthur M Utley Jr *
 James R Wagner *
 Charles Linwood Weisner * '63
 Jerry and Donna Weisner
 W R Wheless Jr * '51
 Calvin White *
 Coy O Williard Jr * '62
 Elliott S Wood *
 Yogi Yarborough * '64
 Billy and Gearl Dean Yow
 Robert E Williams '59
 Hoyt H Wood '36

** Deceased





Record of Support

The Annual Alumni Fund was activated at High Point College in 1961-62. The chart below is a year-by-year account of alumni participation in this important contribution to the life and work of Alma Mater.

Year	Percentage Response	Donors	Unrestricted Funds	Totals
1960-61	2.0%	110	\$ 469.78	\$ 570.00
1961-62	18.0%	1,026	5,175.35	5,770.00
1962-63	25.5%	1,381	8,515.89	13,990.00
1963-64	25.0%	1,508	9,323.60	15,358.00
1964-65	31.2%	1,873	13,028.16	19,940.19
1965-66	15.3%	950	7,327.60	29,197.88
1966-67	35.8%	2,232	12,081.08	58,498.87
1967-68	40.0%	2,564	17,597.00	57,837.52
1968-69	37.5%	2,471	22,307.75	49,424.48
1969-70	34.8%	2,392	22,497.72	40,585.31
1970-71	26.1%	1,889	22,779.76	46,172.26
1971-72	20.7%	1,521	25,569.62	105,610.37
1972-73	18.7%	1,424	25,049.58	76,986.59
1973-74	18.1%	1,410	26,728.73	55,328.35
1974-75	18.3%	1,510	24,355.29	50,683.68
1975-76	27.1% *	1,520	31,762.03	111,145.15
1976-77	22.2% *	1,314	32,766.37	83,082.70
1977-78	28.5% *	1,672	27,287.60	109,212.62

*Based on the number of alumni solicited for the Fund.



Please enclose
your old label

Please notify us 4 weeks in advance

Name (please print)

New street address

City State ZIP

Introducing

The High Point College School Tie

Now you can wear the distinctive and specially-designed High Point College tie with the landmark Tower of Roberts Hall etched in silver on a background of dark green, maroon, medium brown, or navy blue (with diagonal stripe)

Send in the order blank below. Be sure to select a color.

The School Tie is a perfect gift for a friend from college days or for a recent graduate.

The College will mail gift ties to name and address indicated.

Cost is \$9.75 including handling and mail charges. Make check payable to High Point College Educational Foundation.

Mail Order to

High Point College
Alumni Office
High Point, N.C. 27262



Detach and mail

Order Form

Mail tie to _____

Address _____

City _____ State _____ Zip _____

Indicate preferred color:

_____ Dark Green

_____ Maroon

_____ Medium Brown

_____ Navy Blue with stripe

Check or Money Order included for _____ (\$9.75 for each tie.)

HIGHPOINTS

Published six times annually by High Point College.
Subscription \$1 per year payable by the College.
Postmaster send change of address to HIGHPOINTS,
933 Montlieu Avenue, High Point, NC 27262.

Raymond A. Petrea, *Editor*
Robert E. Williams, *Director of Alumni Affairs*

Council for Advancement & Support
of Education

Vol. 54, No. 5, October 1978

Second Class Postage Paid
High Point, N.C.
27262

MISS MARCELLA CARTER
LIBRARY
CAMPUS MAIL

Gifts to College Make Degree Stronger, Valuable

THE STUDENTS who will enter High Point College in 1993 were born in 1975. All of the educational surveys and prognosticators are concerned with the fact that the pool of available students in 1993 will be smaller than the pool in the late 1970s. In other words, the nation's total college enrollment will decline in the 1990s simply because there are fewer people of the appropriate age — they were born and counted two years ago.

Recent years have brought hard times to most liberal arts colleges. Enrollments have declined and support has slipped away. A few colleges have closed; others have curtailed some activities as "non-essential." Those operations had been considered essential just the year before. Once a college starts cutting back, losing students, or has less support, it becomes extremely difficult to return to a situation of stable enrollment and adequate support.

High Point College has been fortunate. Support has been good and enrollment has stabilized at close to 1000 students. But there is no guarantee that High Point College will remain "alive and well." Except the guarantee that is given by loyal alumni and generous benefactors. As long as the College can count on the

The value of a degree is related to the strength of the College as it is today

good will, the financial support, and the assistance of alumni and friends in identifying and encouraging potential students to apply for admission, then the College will maintain a position of strength and viability.



Imagine the position of a college graduate who, when asked, "Where did you go to College?" has to answer with the name of a college that no longer exists.

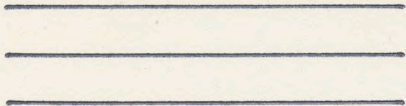
"I don't believe I know that college."

"No, I guess not. It closed five years ago."

The value of a degree is related to the strength of the College as it is today, not the strength of former years.

Keeping High Point College strong is the top priority for all who are related to the institution — students, faculty, administrators, alumni, and friends. All must work together to earn the support vital to the College. Without the generosity and assistance of so many friends, High Point College would be open to problems.

Instead, the College is committed to a role of service intended to last and last and last. As long as future years see the kind of support given in recent times, the College will be safe and secure for a long time.



you can
help HPC
with
your stamp

High Point College

The Alumni Office
High Point, North Carolina 27262

I am contributing to my IRA
 I am contributing to my 401(k) plan
Name _____
Address _____
City _____
State _____
Zip _____

Do you or your spouse work for a Matching Gift Company? If so, be sure to notify your company's personnel department so that your contribution will be doubled.

HIGH POINT COLLEGE ANNUAL GIVING PROGRAM

Please make check payable to High Point College. Amount enclosed _____

Name _____ Class _____

Maiden Name _____

Address _____

Employer _____

Indicate if spouse attended High Point College and is to receive joint credit for gift. _____

Class _____

Please mark one box below:

Unrestricted gift Scholarship Fund (Name) _____

Gifts constitute a deduction under Income Tax laws.
WRITE information for Class Notes of HIGHPOINTS below.