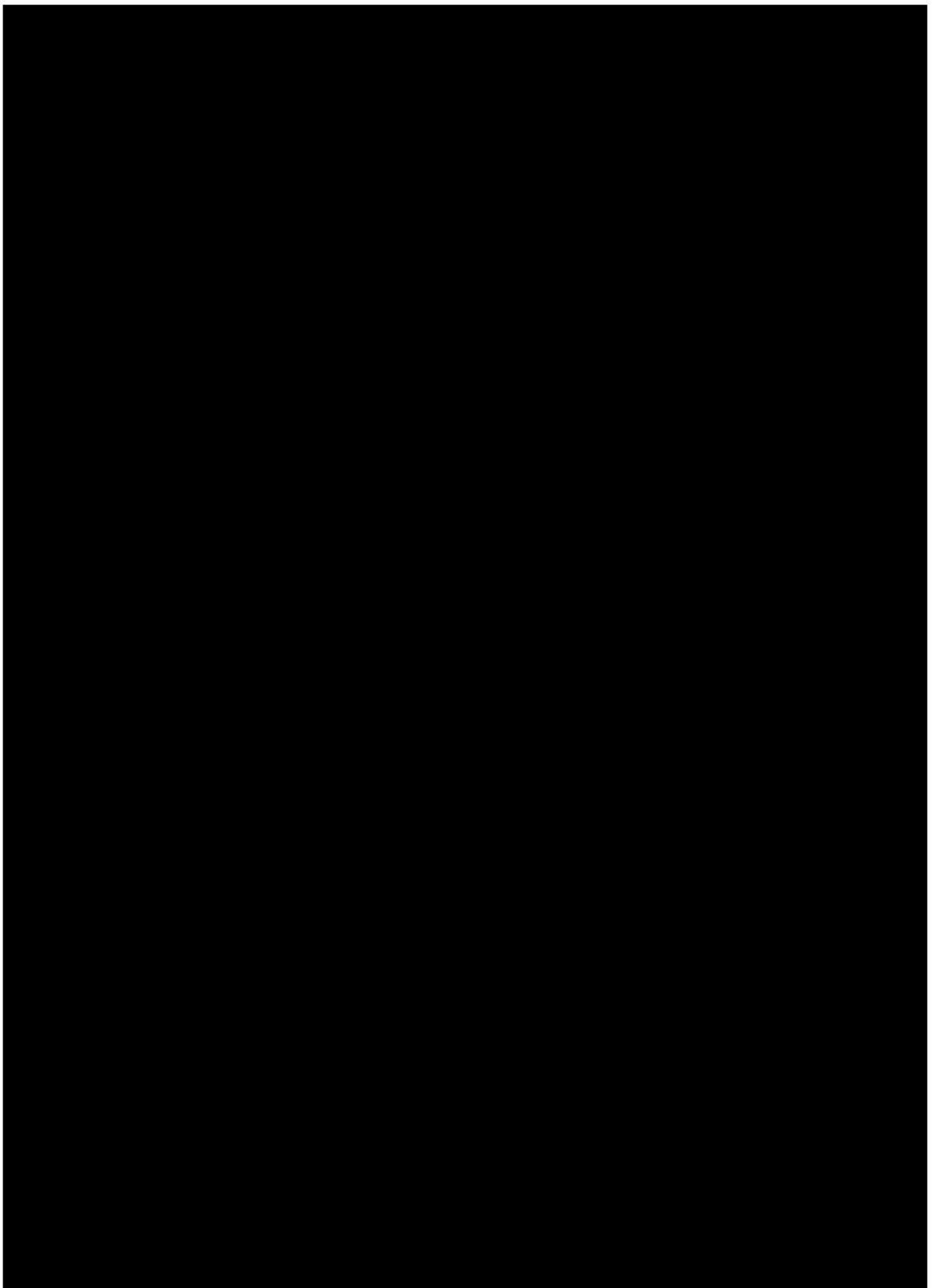
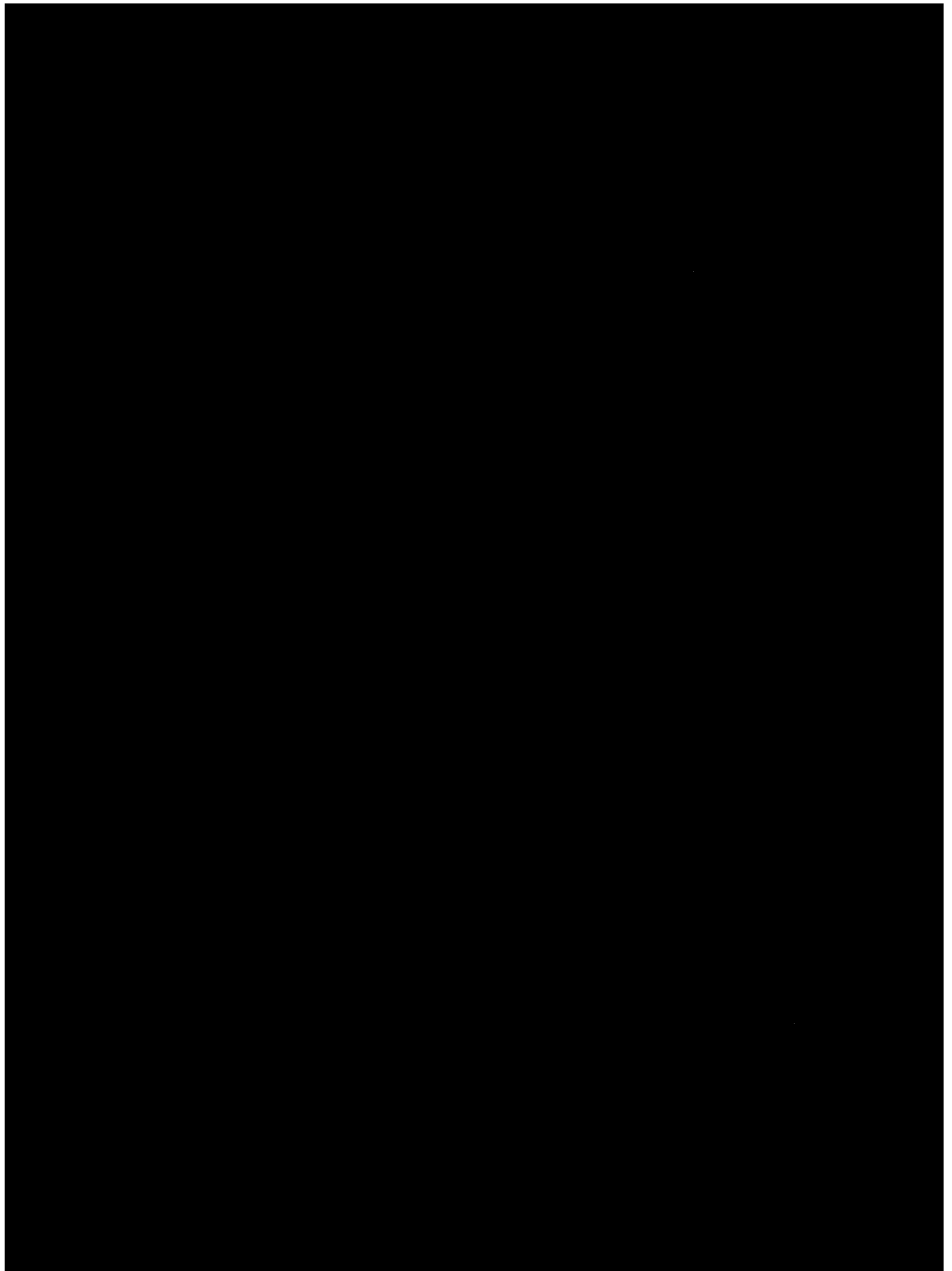


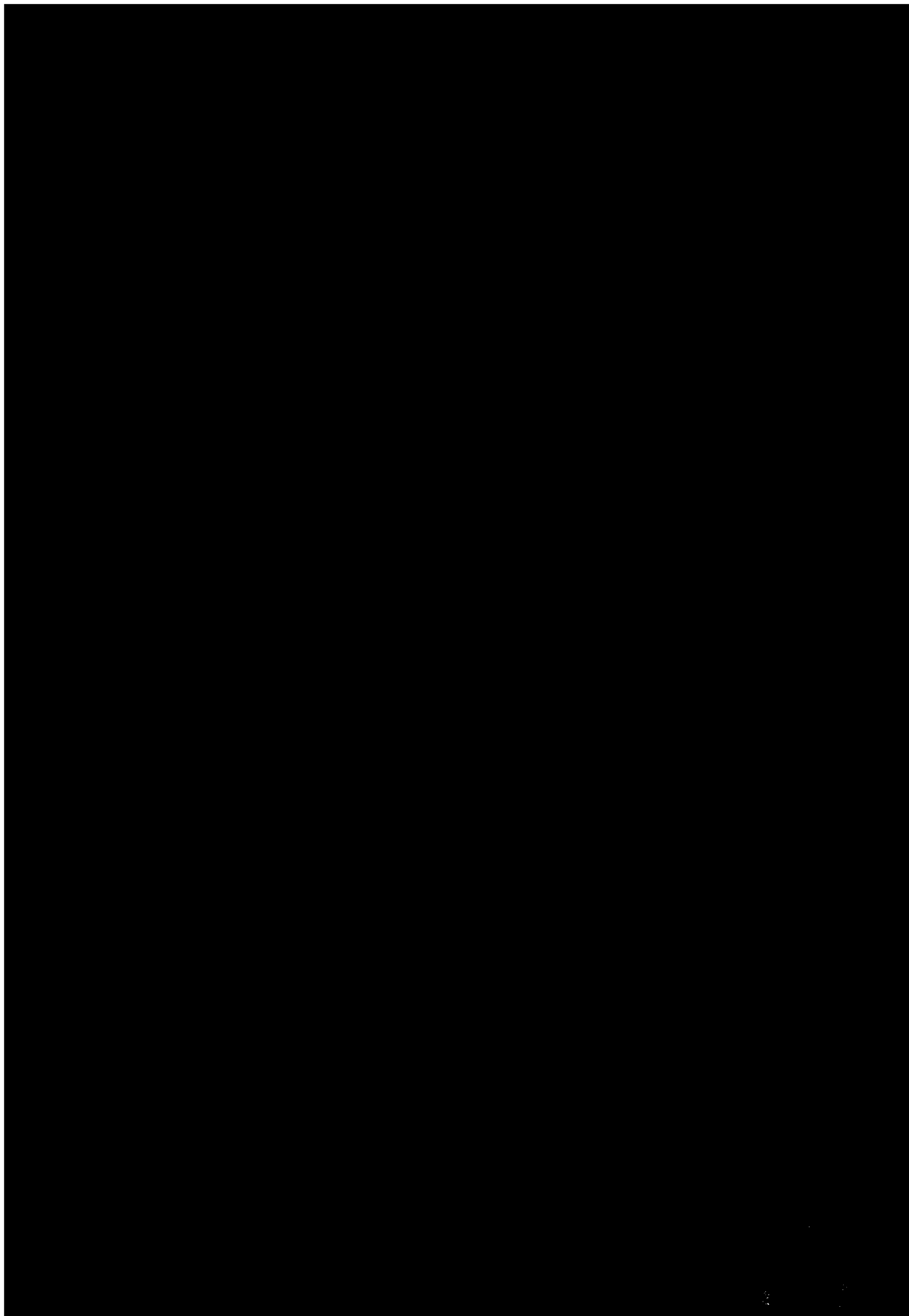


THE  
1933  
ZENITH

HIGH POINT COLLEGE







THE  
ZENITH



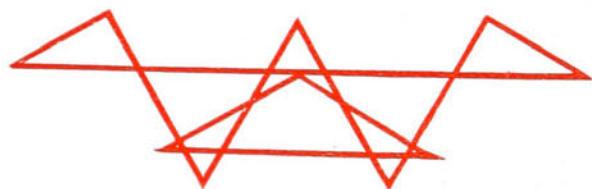
1933

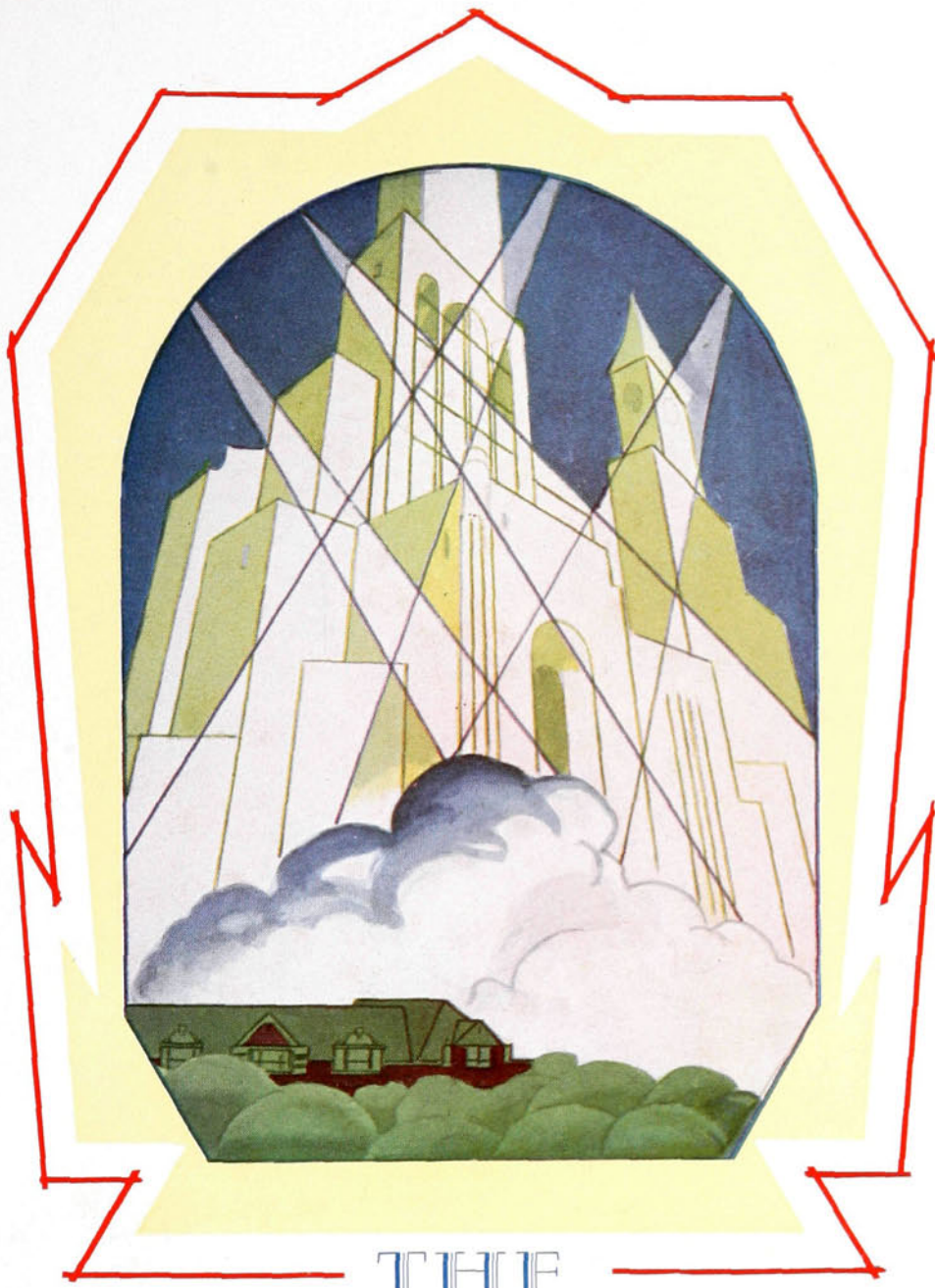


Dwight M. Davidson, Jr.  
EDITOR



• Joseph N. Craver •  
MANAGER





THE  
1933 ZENITH

Published by the  
Senior Class of

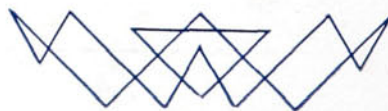
HIGH POINT HIGH POINT  
COLLEGE NORTH CAROLINA





## FOREWORD

IN keeping with the modern trend of the age, we have modeled the 1933 edition of *The Zenith* on a modernistic motif. If, in the future, you may turn these pages and recall the gayety and glamour of the days at High Point; the friendships and the aspirations, then our task is fulfilled.





# CONTENTS

The College



The Classes



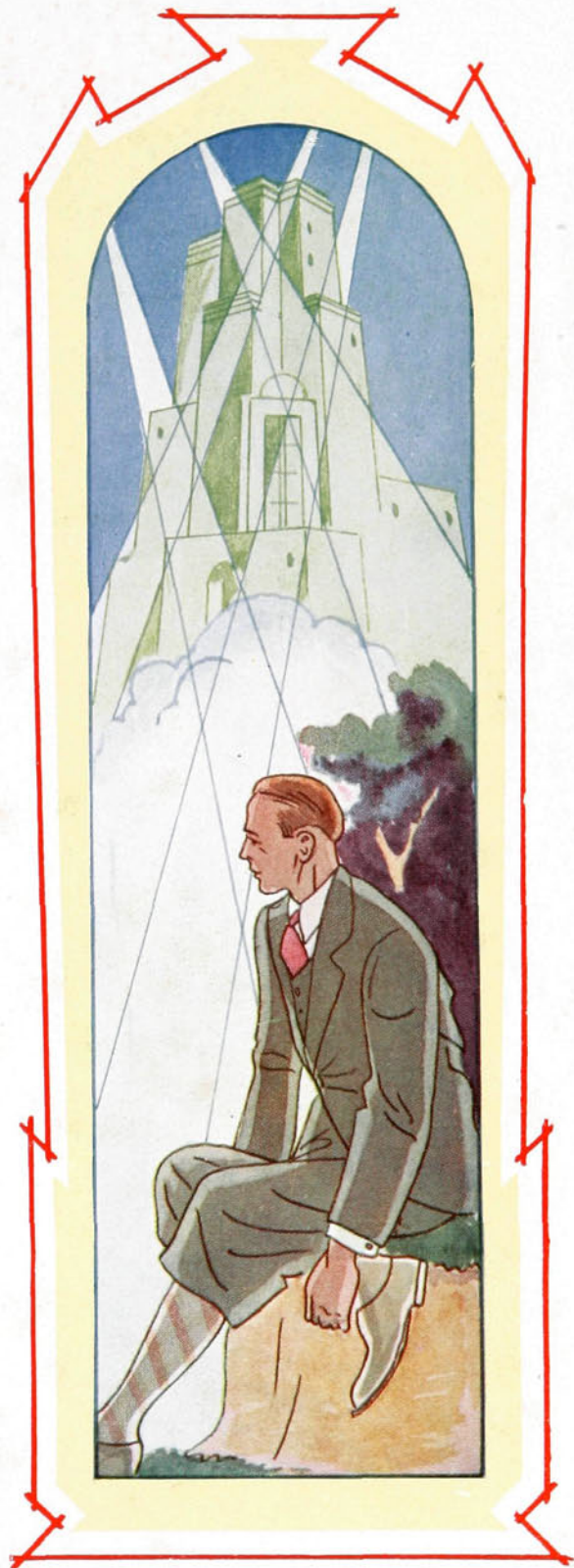
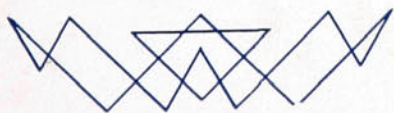
Athletics



Organizations



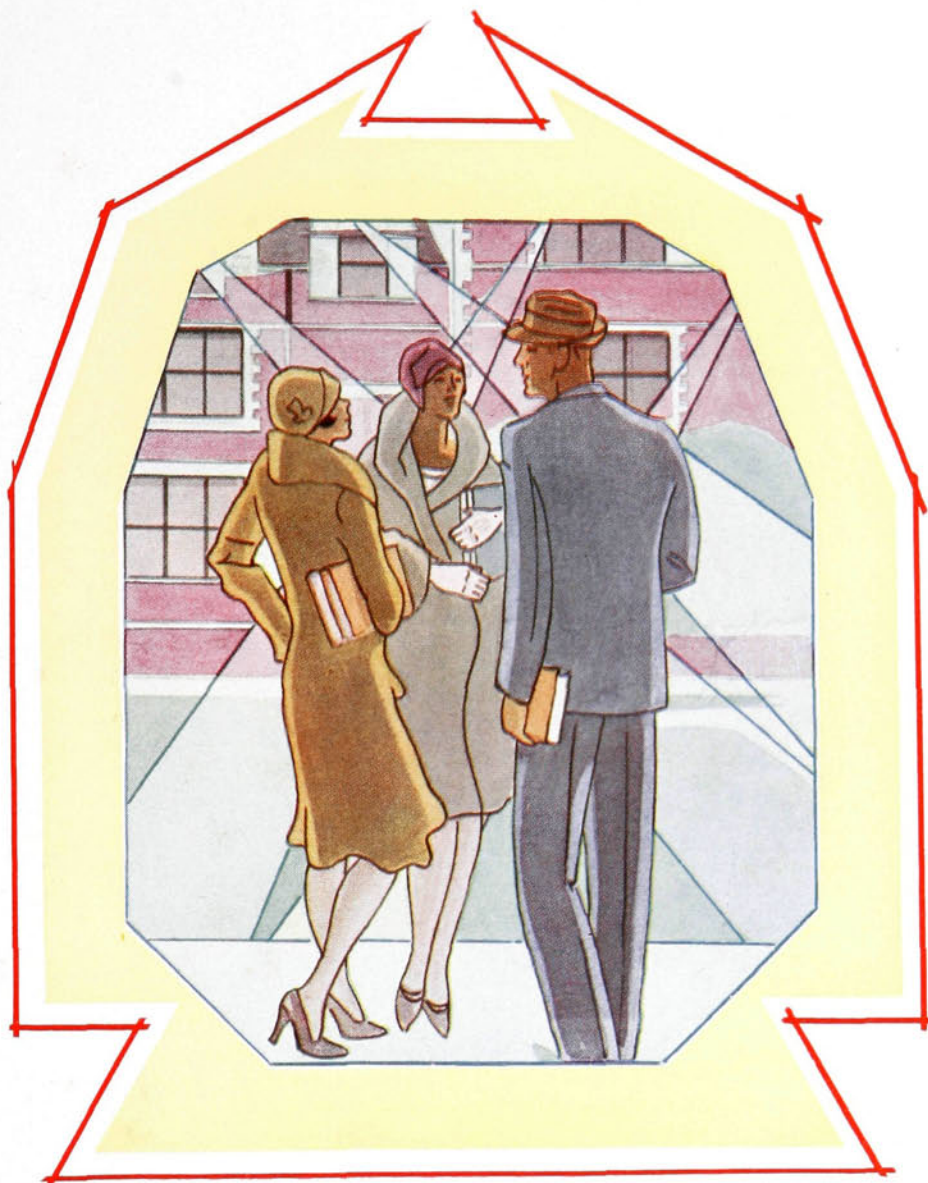
Features



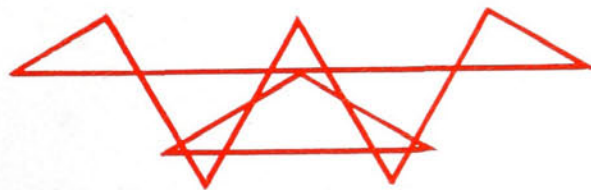


## DEDICATION

TO our Mothers and Fathers, our most loyal and devoted friends, who have given us golden opportunities by unstinted sacrifices, that we may have a deeper appreciation of this age in which we live, we wish to express our deepest gratitude. Thus we gratefully dedicate this, the seventh volume of *The Zenith*, to the ones who have been our inspirations through four years of college, to those who are most deserving of our love, our Mothers and Fathers.



THE COLLEGE







9-1-66 G. J. H.  
"So shall my soul receive  
The secret of your strength  
Your unforgotten beauty interfuse  
My common life—"

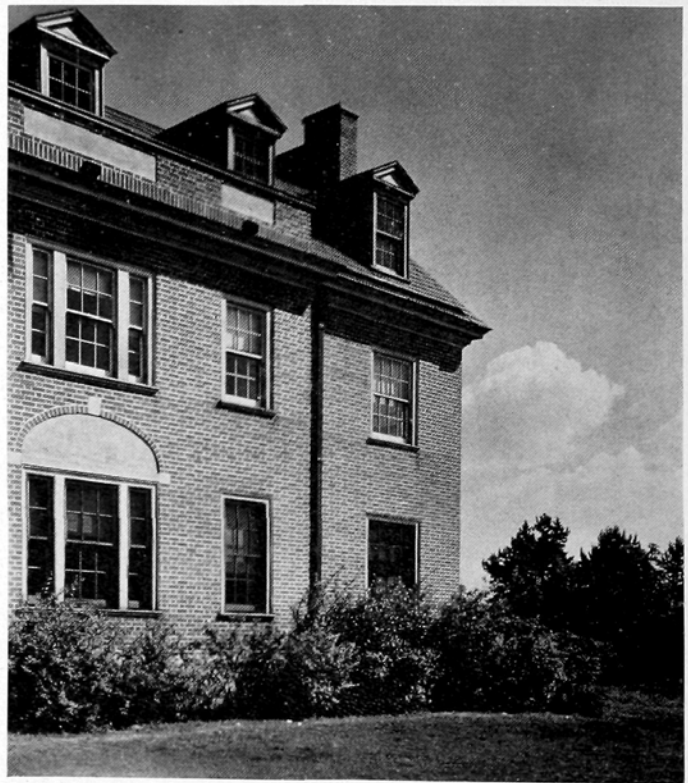
ADMINISTRATION BUILDING



VIEW FROM THE JUNGLE



DOORWAY—ROBERTS HALL

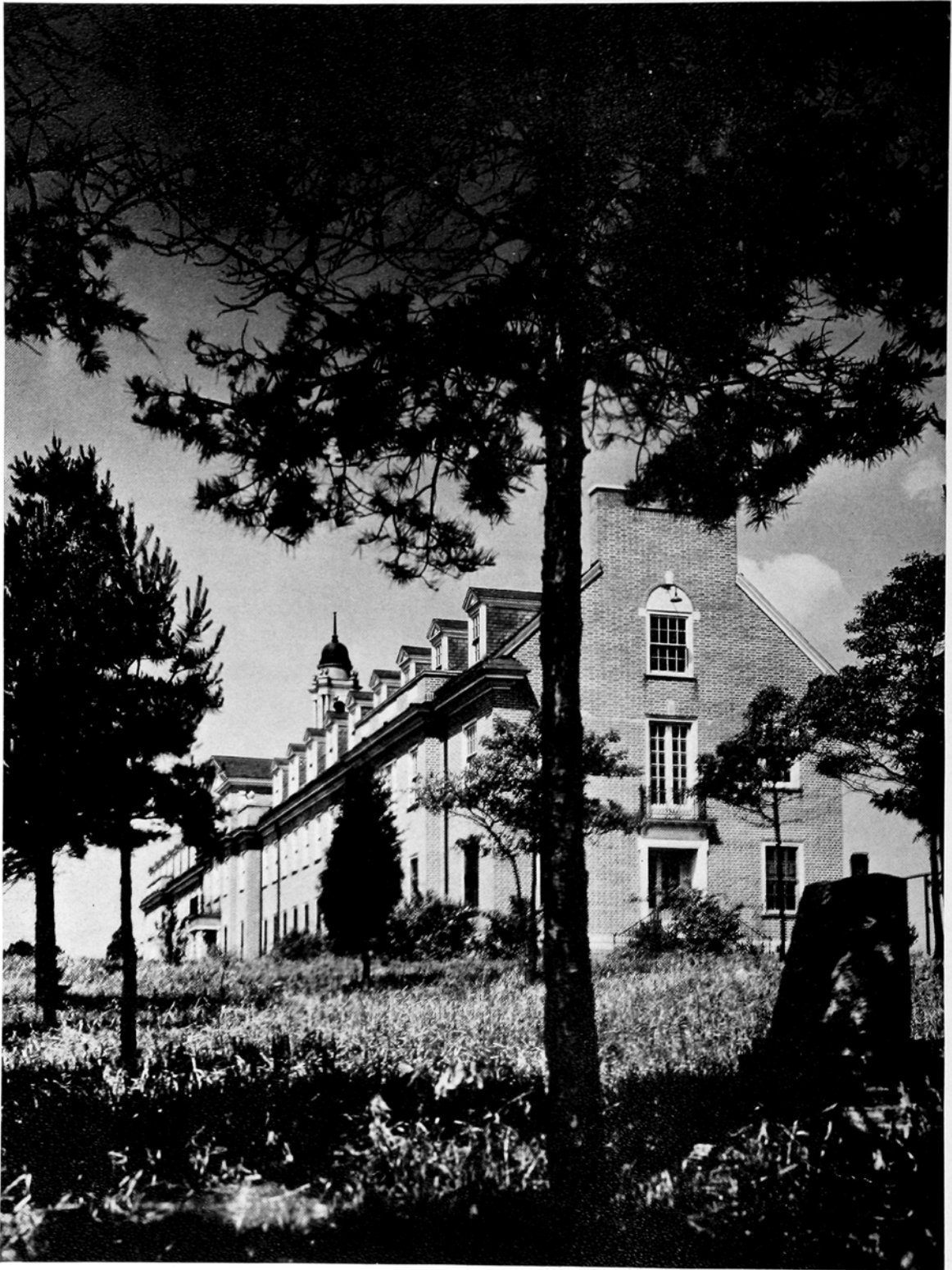


CORNER OF GIRLS' DORMITORY



Where good fellows get together—  
Here mirth and melancholy reign,  
And the joyful triumph  
Of ambitions achieved.

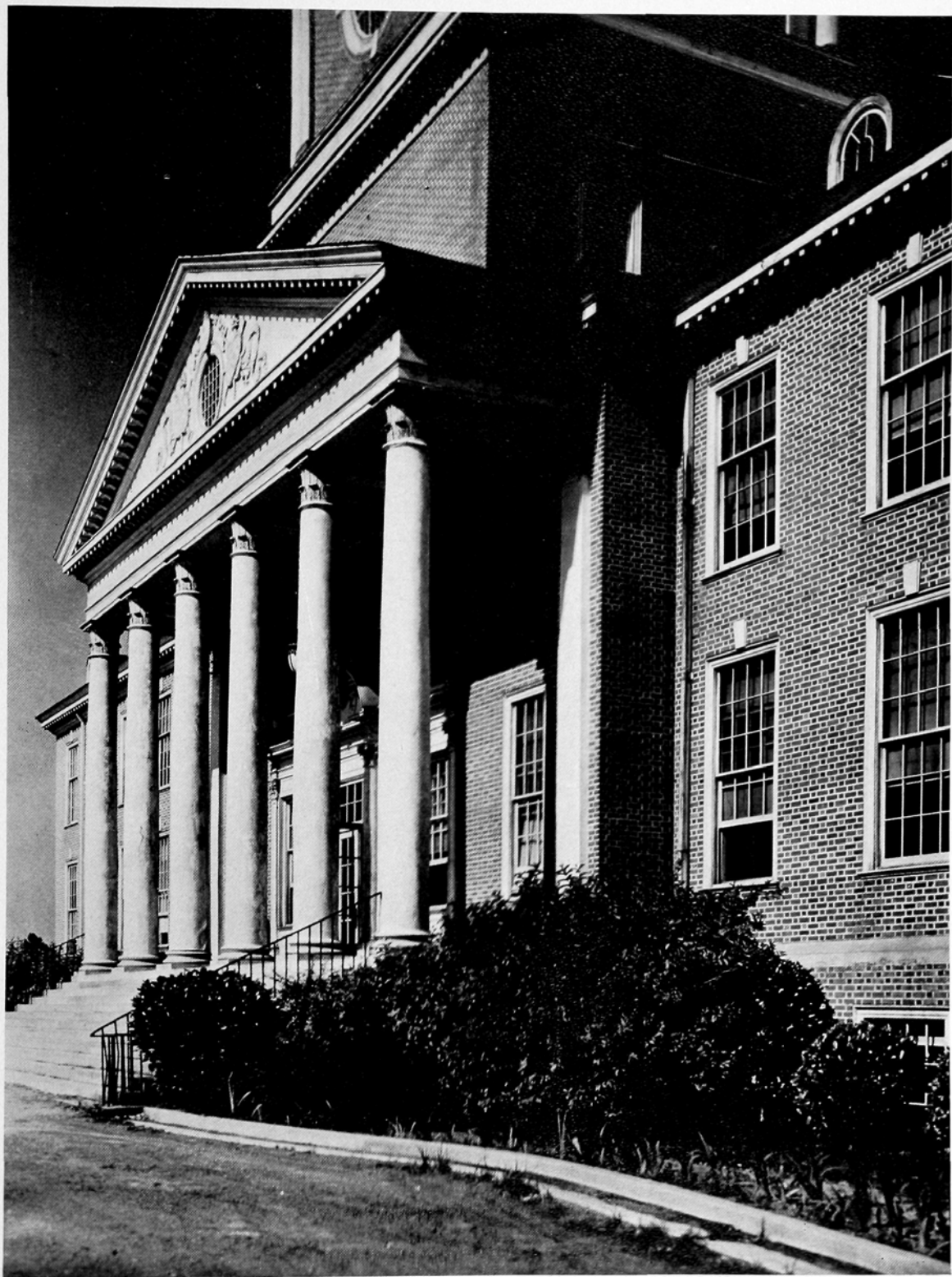
BOYS' DORMITORY



"Here, too, dwells simple truth;  
Unsullied beauty,  
Sound, unbroken youth."  
Seeking, striving, but never yielding

WOMAN'S HALL



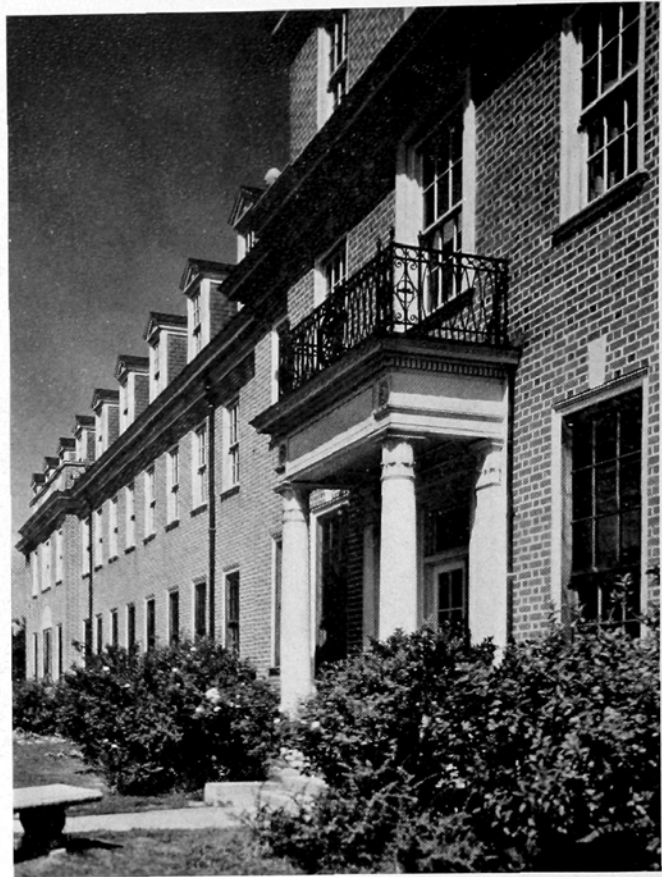


Where friendships are made,  
And loyalties are kept;  
We mounted your steps  
To seek the knowledge sages impart.

THE PORTICO



ONE OF THE TOWERS



ANOTHER DOORWAY

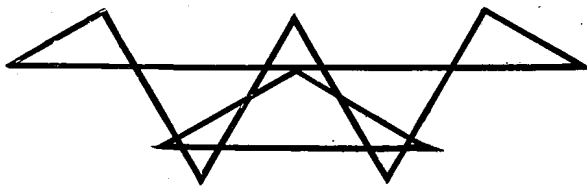


THE COLLEGE



"I think that I shall never see  
A poem as lovely as a tree.  
Poems are made by fools like me,  
But only God can make a tree—"

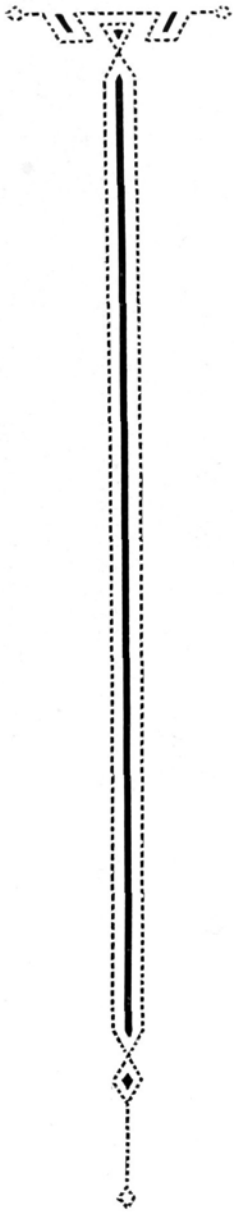
THE JUNGLE





GIDEON IRELAND HUMPHREYS, A.M., D.D.  
PRESIDENT

# The Zenith of 1933



**FACULTY**

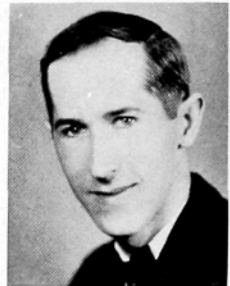
J. HOBART ALLRED  
A.B., A.M.  
*Professor of Modern Language*



JULIAN F. BEALL  
A.B.  
*Athletic Director*  
*Instructor of Economics*



MISS RUTH BELLAMY  
A.B.  
*Instructor in Dramatics and Speech*



PAUL R. BOWEN  
A.B., M.S., Ph.D.  
*Professor of Biology*



E. O. CUMMINGS  
B.S., M.S., Ph.D.  
*Professor of Chemistry*



MISS NAOMI DAWSON  
*Secretary to President*

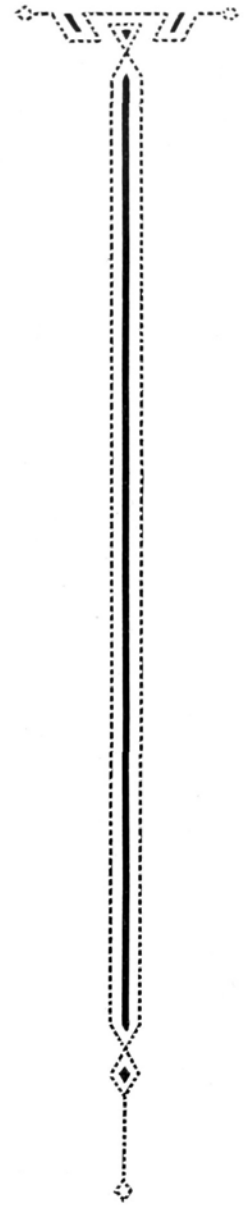


MISS BONNIE ENOCH  
*Instructor in Art*



R. H. GUNN  
A.B.  
*Bursar*  
*Instructor in Department of Business*

# The Zenith of 1933



## FACULTY



N. M. HARRISON  
A.B., B.D.  
*Promotional Secretary*



CLIFFORD R. HINSHAW  
A.B., A.M., M.A., LITT.D.  
*Professor of Education and Psychology  
Director of Summer School and  
Extension*



MISS E. VERA IDOL  
A.B., B.S., M.A.  
*Professor of English*



MISS LOUISE JENNINGS  
A.B., B.L.S.  
*Librarian*



P. S. KENNETT  
A.B., B.D., LL.D.  
*Professor of History*



P. E. LINDLEY  
A.B., M.A., LITT.D.  
*Dean of College  
Professor of Religious Education*

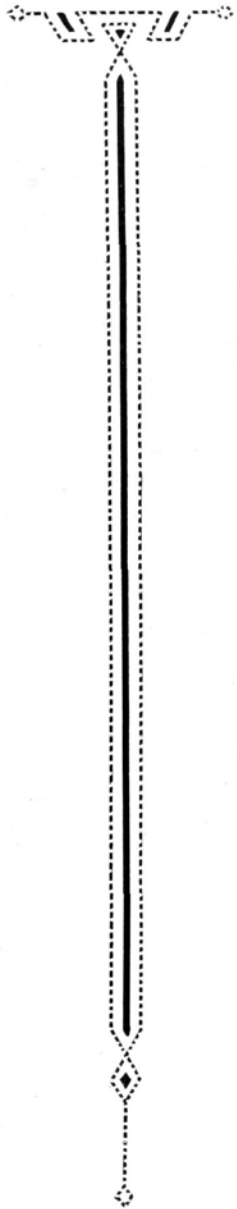


J. HARLEY MOURANE  
B.S., M.S.  
*Professor of Chemistry and Physics*



MISS MARGARET SLOAN  
A.B.  
*Instructor in Voice, Piano, and  
Theoretical Subjects*

# The Zenith of 1933



FACULTY

HOWARD L. SPESSARD  
B.S.  
*Dean of Men  
Professor of Business Administration*



ERNEST B. STIMSON  
B.Mus.  
*Department of Music  
Instructor in Voice, Piano, and  
Theoretical Subjects*



MRS. GEDDIE STRICKLAND  
*Instructor in Physical Education*



MRS. ALICE PAIGE WHITE  
A.B., A.M.  
*Professor of Greek, Latin, English and  
Journalism*



MRS. C. L. WHITAKER  
*Dietitian*



MISS MARY E. YOUNG  
A.B., B.A., M.A.  
*Dean of Women  
Associate Professor of Education*

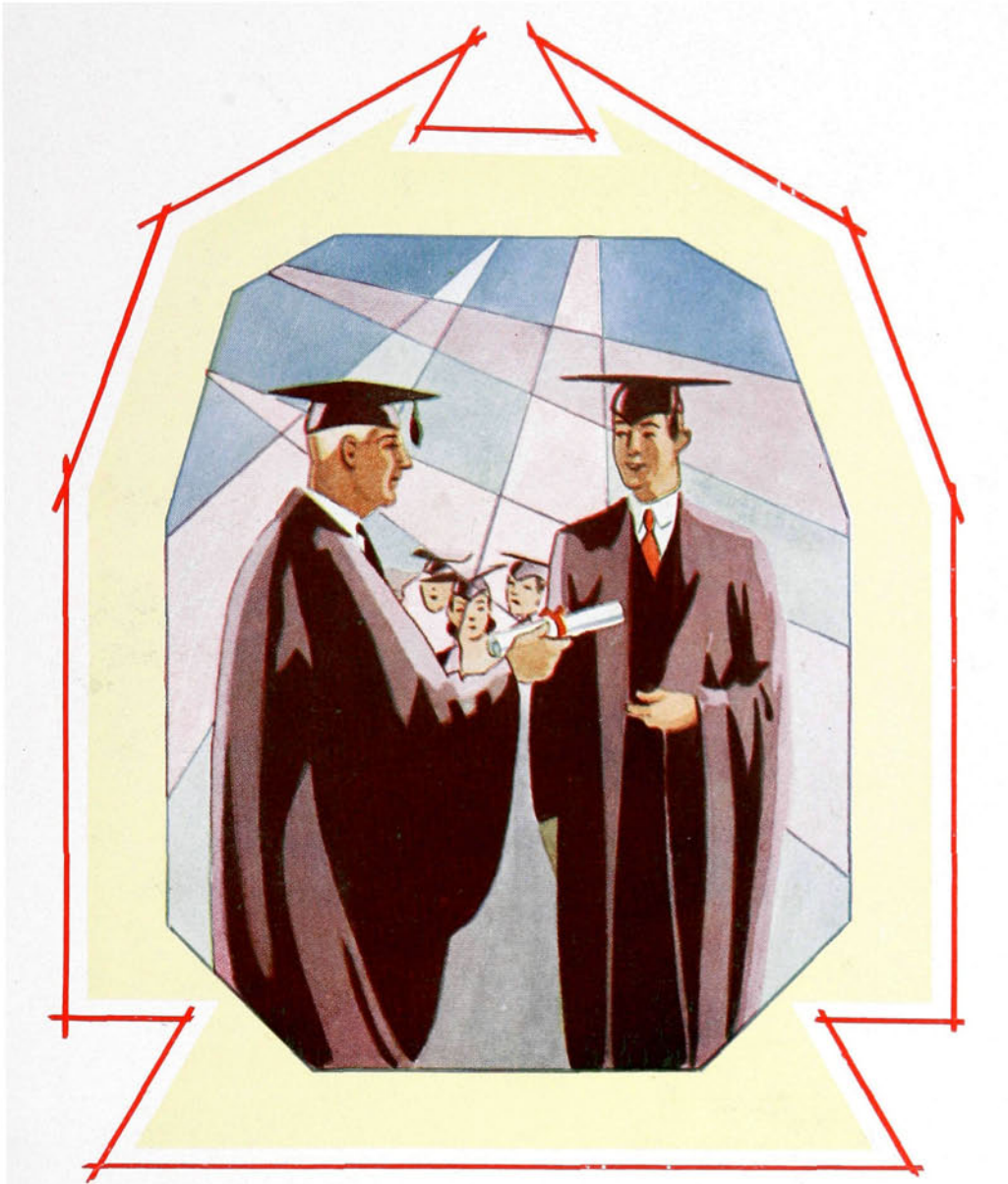


N. P. YARBOROUGH  
A.B., A.M.  
*Associate Professor of Modern  
Language*

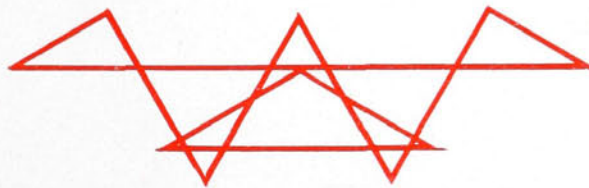


MRS. N. P. YARBOROUGH  
B.S.  
*Professor of Home Economics*

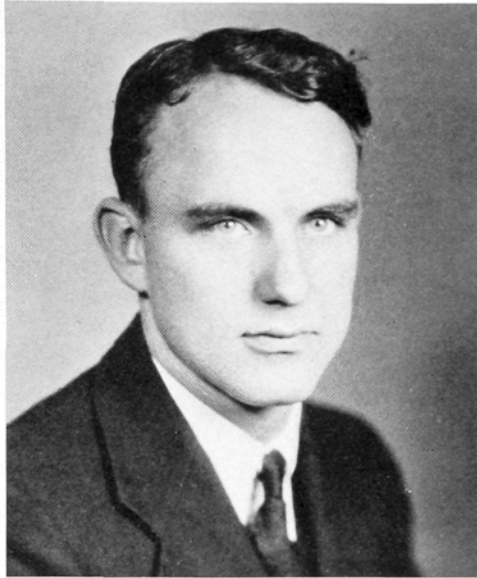




THE CLASSES







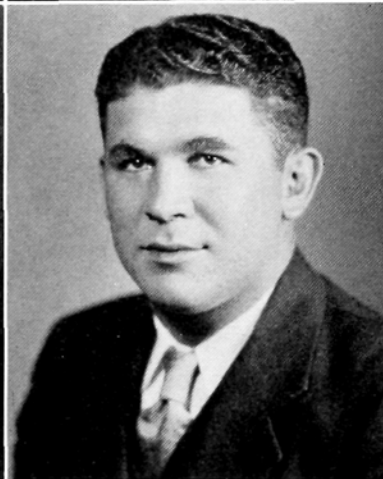
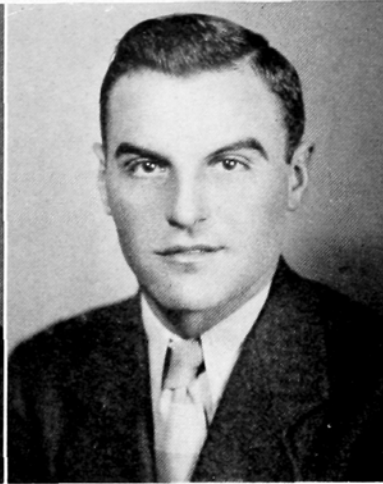
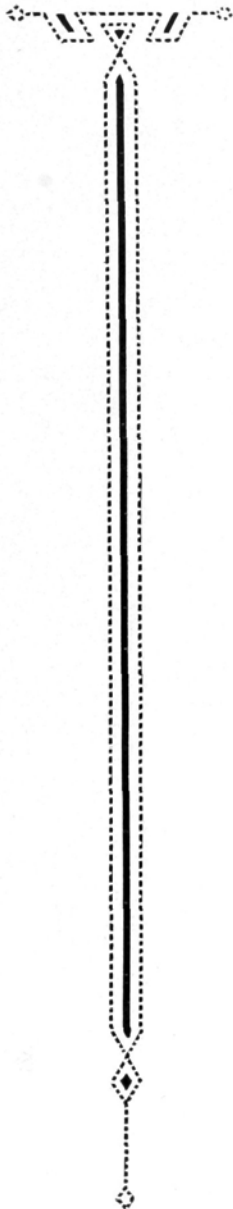
OFFICERS

CARL M. SMITH . . . . .	<i>President</i>
LESTER FURR . . . . .	<i>Vice-President</i>
ELIZABETH GURLEY . . . . .	<i>Secretary</i>
CORNELIA HOWARD . . . . .	<i>Treasurer</i>
N. P. YARBOROUGH . . . . .	<i>Advisor</i>



SENIORS

# The Zenith of 1933



HOMER GWYNN BIVENS, B.S.

HIGH POINT, N. C.

Ε Η Φ

MINERVA ELVA CARTNER, A.B.

MOCKSVILLE, N. C.

Σ Α Φ

Nikathan Literary Society, 1, 2, 3, 4 Vice-President, 3; Christian Endeavor, 1, 2, 3, 4; Y. W. C. A., 1, 2, 3, 4; Choral Club, 1; Girls' Glee Club, 2, Secretary, 2; College Choir, 3, 4 Vice-President, 4; Etude Music Club, 2, 3; Modern Priscilla Club, 3, 4, Secretary, 4; Dramatic Club, 4; Treasurer Woman's Student Government, 2, Vice-President, 4; Art Club, 3, 4; Class Secretary, 3.

VERNON CANNOY, A.B.

BOWLING GREEN, KY.

Football, 1, 2, 3, 4; Track, 1; Thalean Literary Society, 1, 2, 3, 4, Vice-President, 1, Reporter, 1; Christian Endeavor, 1, 2, 3, 4.

JOE N. CRAVER, A.B.

LEXINGTON, N. C.

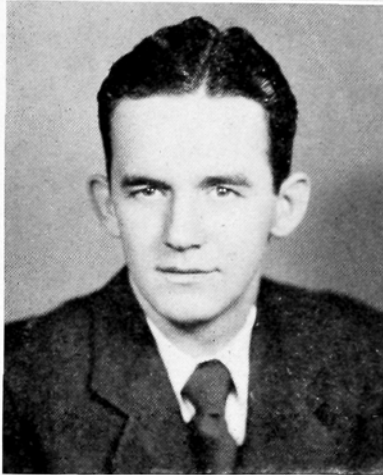
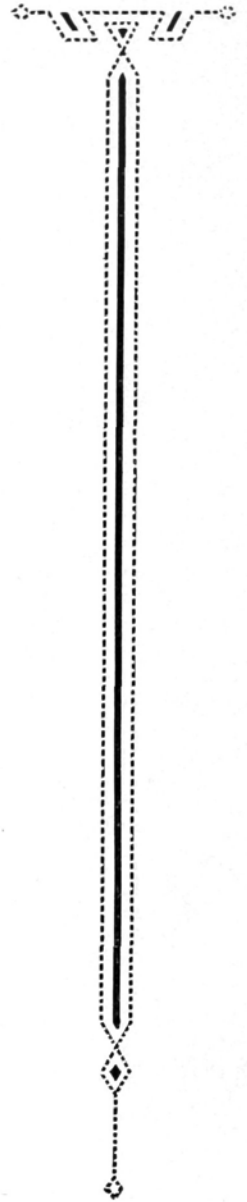
I T K

Football, 1, 2, 3, 4, Captain, 4; Baseball, 1, 4; Wrestling, 3; Akrothian Literary Society, 2, 3, 4, Secretary, 3 Vice-President, 3; Athletic Council, 3, 4; HI-PO Business Manager, 3; Business Manager "Zenith," 4; Block "H" Club, 2, 3, 4; Men's Student Council, 2; Y. M. C. A., 4.

SENIORS



# The Zenith of 1933



GLADYS CULLER, A.B.

HIGH POINT, N. C.

A Θ Ψ

Artemesian Literary Society, 1, 2, 3, 4. Vice-President, 3; Class Treasurer, 3; "Zenith" Staff, 3.

DWIGHT M. DAVIDSON, JR., A.E.

GIBSONVILLE, N. C.

I T K

President Class, 1; Akrothian Literary Society, 1, 2, 3, 4, Vice-President, 1, President, 3, 4. Critic, 3; Forensic Council, 3, President, 3; Intercollegiate Debater, 2, 3, 4; Chief Marshal, 3; Managing Editor "Hi-Po," 3. Associate Editor, 4; Editor of "Zenith," 4; Tennis Manager, 3; Y. M. C. A. Cabinet, 4; Football Trainer, 3, Manager, 4.

LESTER SEYMOUR FURR, A.B.

NEW LONDON, N. C.

Rutherford Junior College, 1, 2; Thalean Literary Society, 3, 4, Secretary, 3, President, 4; Ministerial Association, 3, 4, Chaplain, 3, President, 4; Vice-President Class, 4; Y. M. C. A., 3, 4, Treasurer, 4; Christian Endeavor, 3; College Choir, 3, 4.

CHARLIE LEE GRANT, A.B.

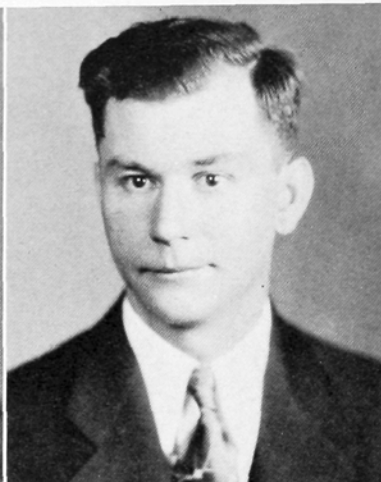
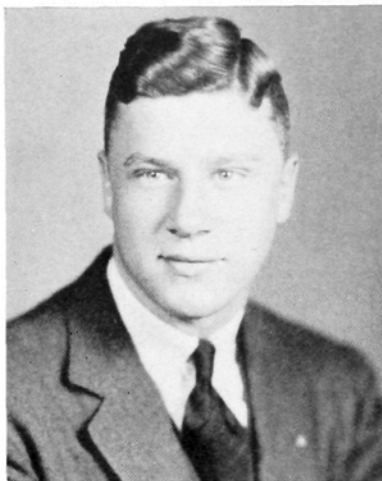
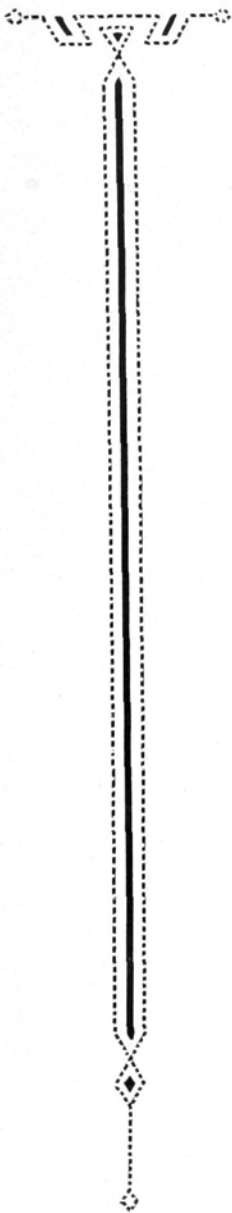
KERNERSVILLE, N. C.

Ministerial Association, 1, 2, 3, 4.

SENIORS



# The Zenith of 1933



C. L. GRAY, JR., B.S.

HIGH POINT, N. C.

I T K

Class Treasurer, 1; Tennis Team, 3, 4; College Choir, 1, 2, 3, 4; Pre-Med Club, 2, 3, 4; Akrothian Literary Society, 4.

ELIZABETH GURLEY, A. B.

HIGH POINT, N. C.

Θ Φ

Nikanthan Literary Society, 1, 2, 3, 4; Secretary, 2; President, 4; Day Student Council, 3; Pan-Hellenic Council, 4; Class Secretary, 4; "Zenith" Staff, 4; Class Poet, 4.

WILLIAM MARVIN HEDRICK, A.B.

HIGH ROCK, N. C.

Track 1, 2; Thalean Literary Society, 2, 3, 4; Treasurer, 3, 4; Y. M. C. A., 4.

CORNELIA HOWARD, B.S.

HIGH POINT, N. C.

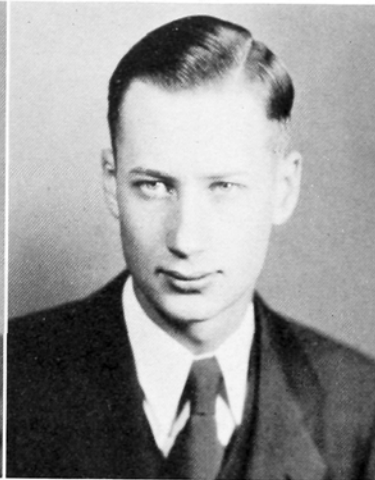
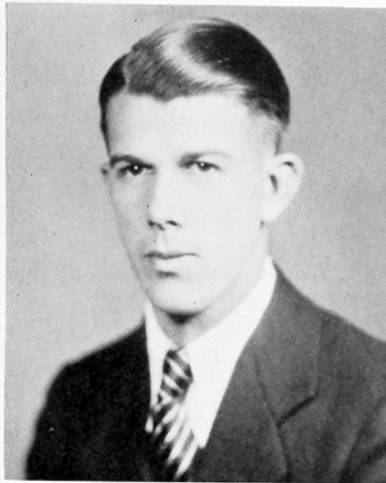
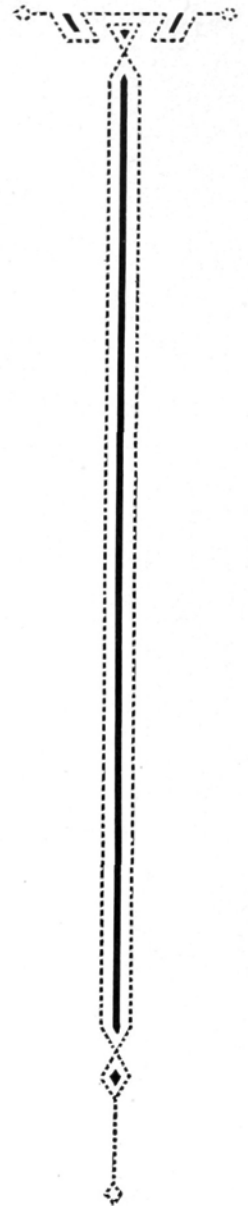
Σ Α Φ

Girls' Glee Club, 1, 2, 3; Librarian, 3; Choral Club, 1; College Choir, 3, 4; Artemesian Literary Society, 1, 2, 3, 4; Class Treasurer, 4.

SENIORS



# The Zenith of 1933



W. M. HOWARD, JR., A.B.

MOCKSVILLE, N. C.

Christian Endeavor, 1, 2, 3, 4, Treasurer, 2, Vice-President, 3, President, 4; Ministerial Association, 1, 2, 3, 4, Secretary, 2, 3, Vice-President, 2, Chaplain, 3; Y. M. C. A., 1, 2, 3, Vice-President, 2; Thalean Literary Society, 1, 2, 3, 4, Secretary, 2, 3, Chaplain, 3; Vice-President State Ministerial Association, 2, Secretary, 3; College Marshal, 3; Intra-society Debater, 3; Soccer, 3, 4.

AGNES INGRAM, A.B.

HIGH POINT, N. C.

Α Θ Ψ

Nikanthan Literary Society, 1, 2, 3, 4; Pan-Hellenic Council, 4.

WILLIAM RALPH JACKS, A.B.

DUNLAP, N. C.

Thalean Literary Society, 1, 2, 3, 4, Secretary, 3, Reporter, 3, Critic, 4, President, 4; Christian Endeavor, 1, 2, 3, 4, Treasurer, 3; Y. M. C. A., 1, 2, 3, 4; Class President, 3.

IDA JOHNSON, A.B.

MORVEN, N. C.

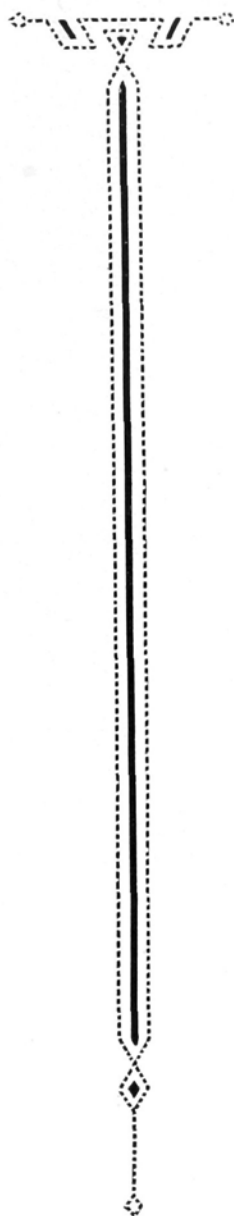
Θ Φ

Artomes'an Literary Society, 1, 2, 4; Day Student Council, 1.

SENIORS



# The Zenith of 1933



JOYCE JULIAN, B.S.

MILLBORO, N. C.

Σ A Φ

Artemesian Literary Society, 1, 2, 3, 4, Chaplain, 4; Choral Club, 1, 2; Christian Endeavor, 1, 2, 3, 4; Modern Priscilla Club, 1, 2, 3, 4, President, 4.

WILTON H. KIMMER, A.B.

JACKSONVILLE, TEXAS

Jacksonville College; Baylor University; Ph.G. Degree, Baylor University, 1931.

JAMES OLLIE KNIGHT, A.B.

NORLINA, N. C.

Thalcan Literary Society, 2, 3, 4, Secretary, 4; Soccer, 3; Y. M. C. A., 1, 2, 3, 4; Christian Endeavor, 1, 2, 3, 4.

MRS. BERNICE CLINARD LEE, A.B.

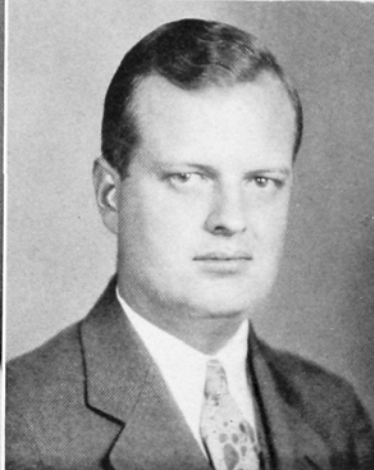
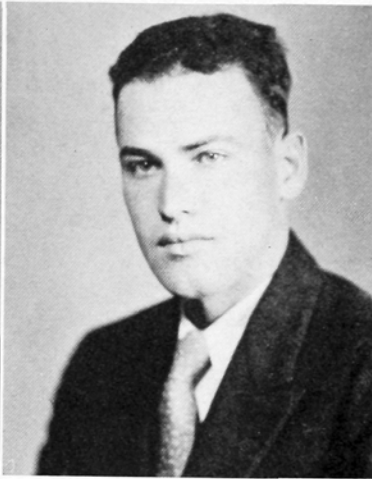
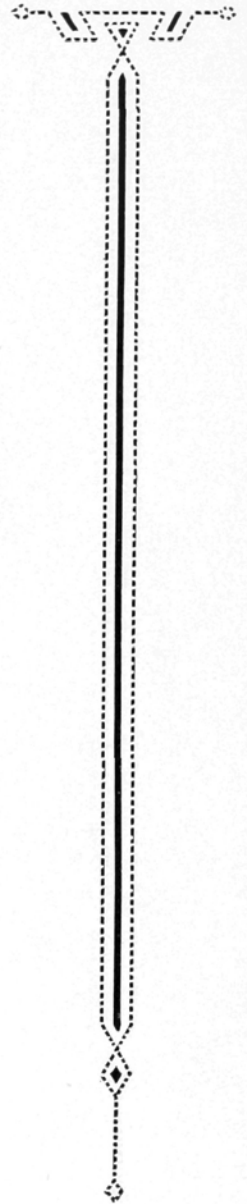
HIGH POINT, N. C.

SENIORS





# The Zenith of 1933



## TYREE S. LINDLEY, A.B.

GRAHAM, N. C.

Y. M. C. A., 1, 2, 3, 4, Treasurer, 2; Vice-President, 3; Thalean Literary Society, 1, 2, 3, 4, Reporter, 2, Vice-President, 4; Christian Endeavor, 1, 2, 3, 4; College Choir, 3, 4; Soccer, 3.

## HUGH S. McCACHERN, A.B.

LINWOOD, N. C.

E H Φ

Baseball, 1, 4; Soccer, 4; Tennis, 3, 4.

## INA McADAMS, A.B.

HIGH POINT, N. C.

A Θ Ψ

Secretary Class, 2; "Hi-Po" Feature Editor, 2; Purple Players, 1; Day Student Council Treasurer, 2, Secretary, 3; Artemesian Literary Society, 1, 2, 3, 4, Secretary, 2, President, 4; President Dramatic Club, 4; Class Historian; Art Club, 4.

## JOHN WESLEY MORGAN, A.B.

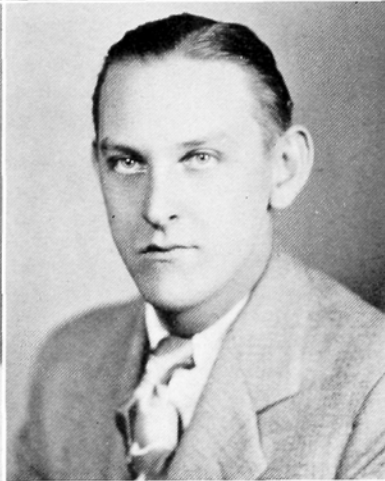
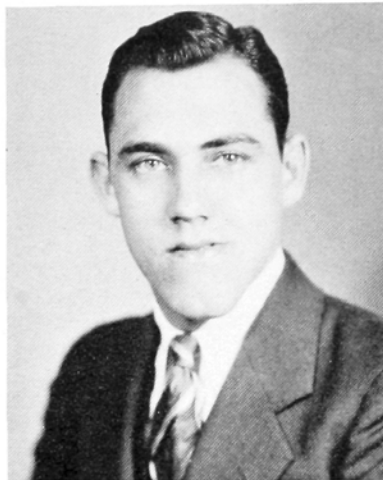
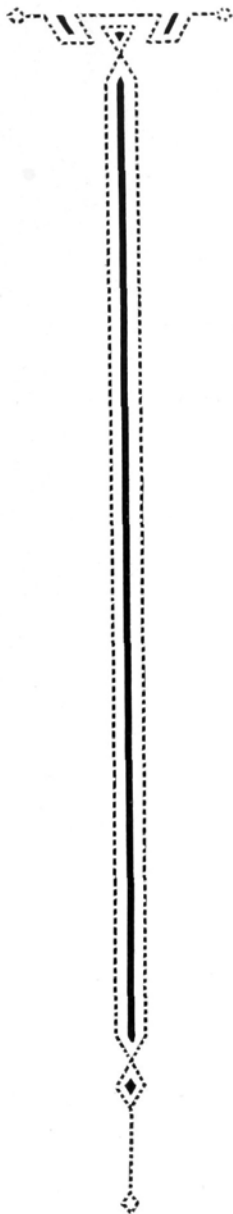
FARMER, N. C.

Thalean Literary Society, 1, 2, 3, 4, Critic, 3, President, 3; Forensic Council, 4; Intercollegiate Debater, 2, 3, 4; Vice-President C. Ass., 3; Scriblerus Club, 3, 4, Vice-President, 4; Christian Endeavor, 1, 2, 3, 4; Y. M. C. A., 1, 2, 3, 4.

## SENIORS



# The Zenith of 1933



CLARENCE P. MORRIS, A.B.

FALLSTON, N. C.

Thalean Literary Society, 1, 2, 3, 4, Chaplain, 2; Forensic Council, 3; Christian Endeavor Society, 1, 2, 3, 4; Y. M. C. A., 1, 2, 3, 4, President, 4; Secretary Guilford County Hi-Y, 4; Ministerial Association, 1, 2, 3, 4, Vice-President, 3, President, 4; College Marshal, 3; Soccer, 2, 3, 4; Basketball, 3, 4.

UNITY ANDREWS NASH, A.B.

HIGH POINT, N. C.

A Θ Ψ

N. C. C. W., 1, 2; Nikanthan Literary Society, 3, 4, Chaplain, 4; Forensic Council, 4; Art Club 3, 4, President, 4; Day Student Council Vice-President, 4.

DWIGHT MOODY NIFONG, A.B.

WALLBURG, N. C.

Ministerial Association, 1, 2, 3, 4, Chaplain, 2, President, 3.

JAMES F. PATCH, B.S.

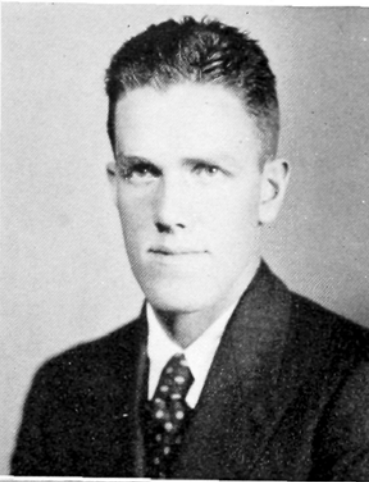
CLAYTON, N. Y.

St. Lawrence University, 1, 2.

SENIORS



# The Zenith of 1933



IRMA ADELAIDE PASCHALL, A.B.

MANSON, N. C.

Σ Α Φ

Artemesian Literary Society, 1, 2, 3, 4, Treasurer 3; Art Club, 3, 4, Secretary, 4; Choral Club, 1; Girls' Glee Club, 2, 3; College Choir, 4; Librarian, 4; Etude Music Club, 2, 3; Christian Endeavor Society, 1, 2, 3, 4; Girls' Athletic Association, 1, 2; Modern Priscilla Club, 2, 3, 4, Vice-President, 4; Dramatic Club, 4; Secretary Woman's Student Government, 3; Y. W. C. A., 1, 2, 3, 4, Secretary, 2, President, 4; College Marshal, 3; Class Treasurer, 2.

PAULINE LIGHTFOOT PATRICK, A.B.

HIGH POINT, N. C.

Α Θ Ψ

Guilford College, 1; N. C. C. W., 2; Artemesian Literary Society, 3, 4; Vice-President Art Club, 4; President Day Student Council, 4.

HOWARD AGNEW PICKETT, A.B.

BURLINGTON, N. C.

Ε Η Φ

Thalean Literary Society, 1, 2, 3, 4, Secretary, 4; Soccer, 2, 3, 4; Y. M. C. A., 1, 2, 3, 4; Treasurer, 3; Christian Endeavor Society, 1, 2, 3, 4.

MARGARET ELIZABETH PICKETT, A.B.

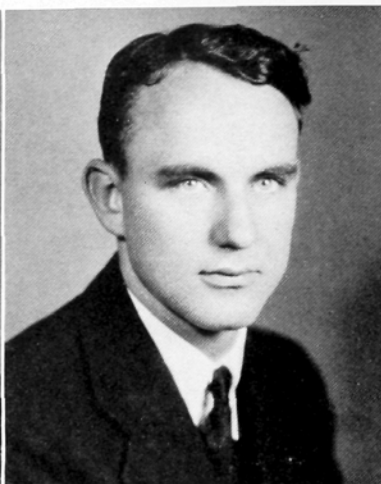
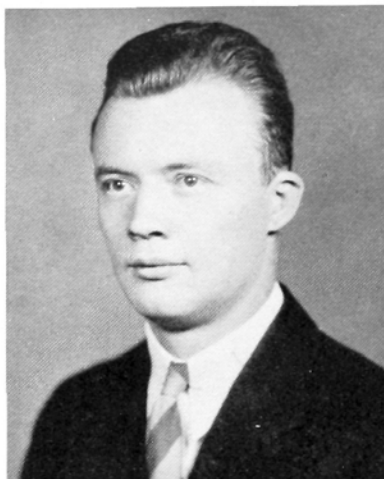
BURLINGTON, N. C.

Nikanthan Literary Society, 1, 2, 3, 4, Treasurer, 3; Christian Endeavor Society, 1, 2, 3, 4, Secretary, 4; Y. W. C. A., 1, 2, 3, 4, Vice-President, 3; Athletic Association, 2; Art Club, 3, 4; Woman's Student Council Head Proctor, 2, President, 4.

SENIORS



# The Zenith of 1933



C. GEORGE PUSEY, B.S.

SEAFORD, DEL.

I T K

Football 2, 3, 4; Chemical Engineering Club, 3, 4; Block "H" Club, 3, 4.

ELIZABETH ELLEN ROSS, B.S.

ASHEBORO, N. C.

Θ Φ

Artemesian Literary Society, 1, 2, 3, 4; Critic 4; Modern Priscilla Club, 1, 2, 3, 4; Christian Endeavor, 1, 2, 3, 4; Corresponding Secretary, 1, 2, 3; Girls' Glee Club, 1; Choral Club, 1.

CARL M. SMITH, B.S.

HIGH POINT, N. C.

E H Φ

Thalean Literary Society, 2, 3, 4, Vice-President, 3; Critic, 4; Y. M. C. A., 2, 3, 4; President, 3; Band, 1, 2, 3, 4; Orchestra, 1, 2, 3, 4; Etude Music Club, 1, 2, 3; Commercial Club, 1; Basketball, 2, 3, 4, Co-Captain, 4; Soccer, 2, 3, 4, Captain and Coach, 2, 3, 4; Chemical Engineering Club, 3, 4; Secretary, 3; College Marshal, 3; Baseball, 4; Class President, 4; Pan-Hellenic Council, 4.

JESSIE LILLIAN SMITH, B.S.

REIDSVILLE, N. C.

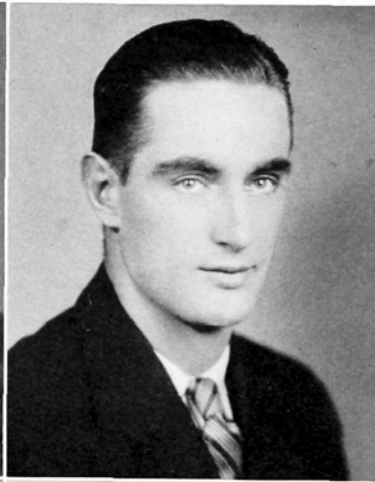
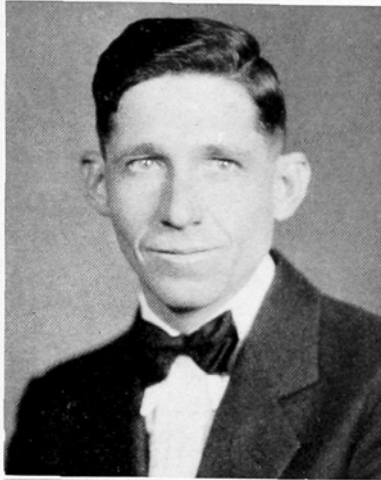
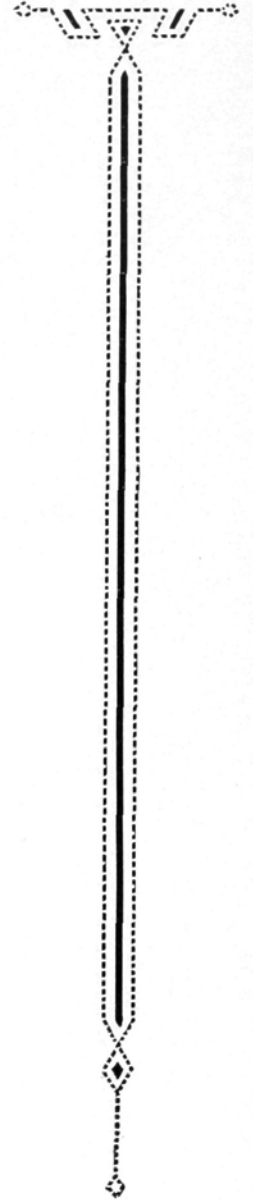
Σ Α Φ

Eastern Carolina Teachers' College, 1; Artemesian Literary Society, 2, 3, 4; Modern Priscilla Club, 2, 3, 4; Treasurer, 4; Y. W. C. A., 2, 3, 4; College Marshal, 3; Christian Endeavor Society, 2, 3, 4.

SENIORS



# The Zenith of 1933



LINDLEY FRED STRADER, A.B.  
REIDSVILLE, N. C.  
Ministerial Association Chaplain, 4.

KATIE SUE STANFIELD, A.B.  
HIGH POINT, N. C.  
Artemesian Literary Society, 2 3, 4; Art  
Club, 3, 4; Girls' Glee Club, 2; Etude Music  
Club, 2.

JAMES KENNETH SWART, B.S.  
WAYNESBURG, PA.  
Δ A E

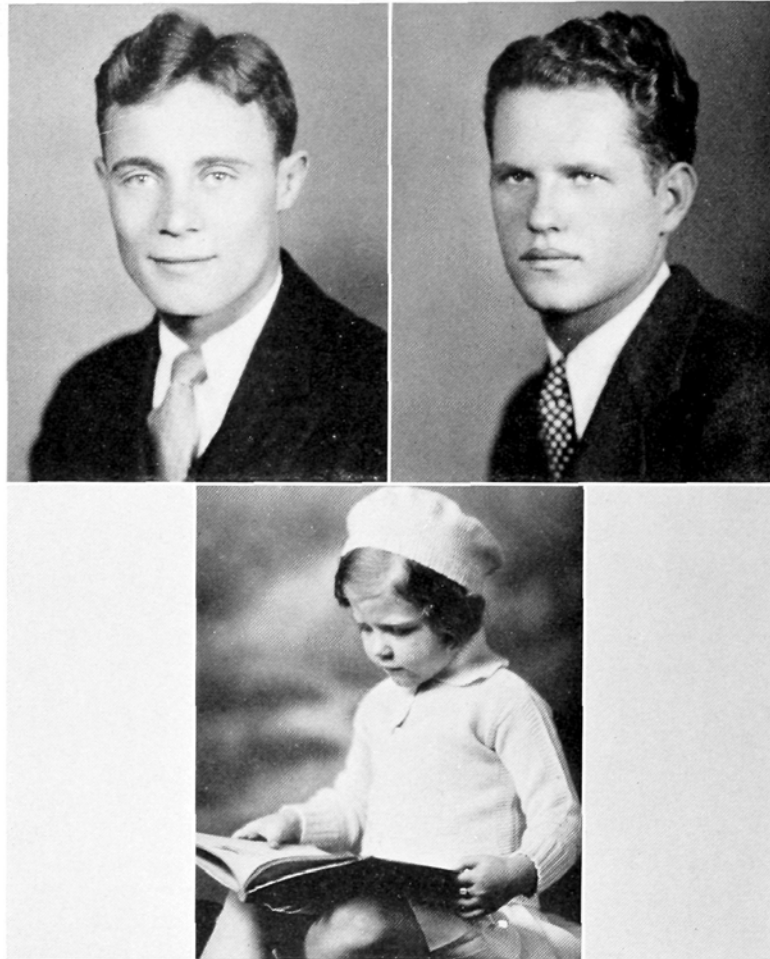
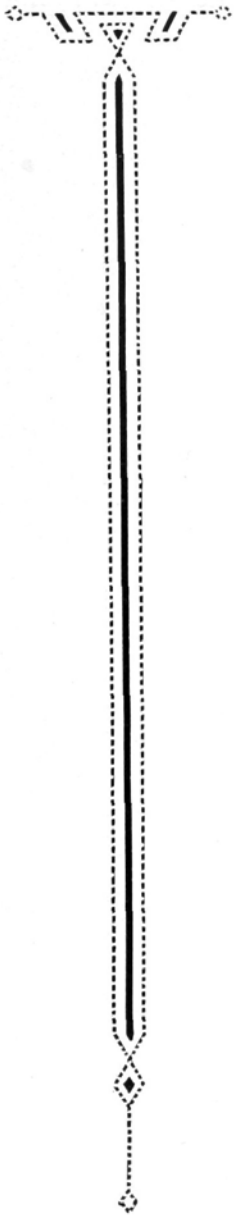
Football, 1, 2, 3, 4; Basketball, 2, 3, 4, Co-  
Captain, 4; Track 2; Dramatic Club, Vice-  
President, 4; Block "H" Club, 2, 3; Com-  
mercial Club, 2; Akrothinian Literary So-  
ciety, 1, 4.

J. ADRIAN THOMPSON, A.B.  
REIDSVILLE, N. C.  
Ministerial Association; Thalean Literary  
Society.

SENIORS



# The Zenith of 1933



ANTHONY JAMES SIMEON, A.B.  
UNIONTOWN, PA.

Δ A E

Football 1, 2, 3; Track, 1, 2, Captain 2; Wrestling, 3; Akrothian Literary Society, 1, 2, 3, 4. Secretary, 2, Vice-President, 3, President, 4; Pan-Hellenic Council, 4; Y. M. C. A., 3, 4; Block "H" Club, 2, 3, 4; Dramatic Club, 4, Treasurer, 4.

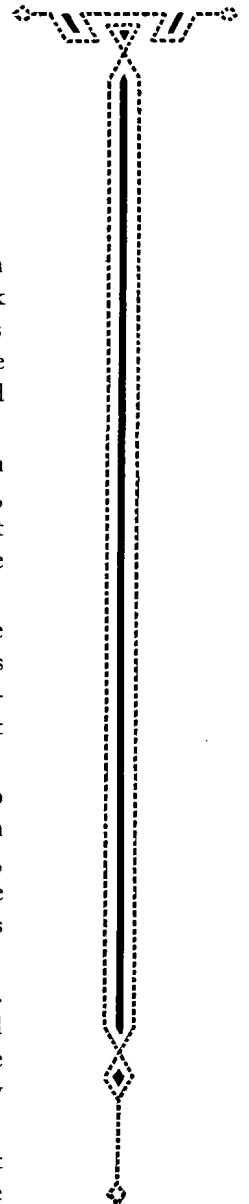
J. RAY GRAHAM, A.B.  
FARMINGTON, N. C.

Football, 4; Basketball, 4; Baseball, 4; Entered from Mars Hill College, 4.

MARY JANE ROSS, *Mascot*  
ASHEBORO, N. C.

SENIORS





## CLASS HISTORY

ACCORDING to Greek legend, Aurora, the beautiful goddess of dawn, each morning preceded the sun god, Apollo, to the edge of the earth to draw back the curtain of night so that Apollo might ride in his chariot across the heavens to lift the veil of darkness from the earth. "The sands of Time sift slowly in the hour-glass of Life." We no longer believe in gods and goddesses—they have passed into legend—but we often find their stories repeated similarly in life.

Four years ago, in the spring of 1929, high school graduation was serving as an Aurora to us, lifting the veil of childhood that we might branch out into a larger, brighter world. In the fall, one hundred and four students came to enter High Point College as freshmen. Four years later, we find the number scarcely one-third the original number. These four years have acted as a filter.

We served our freshman apprenticeship with small concern. There seemed little to worry about—four years was a long time in the future. Our chief worry was Sophomore Court. Dwight Davidson was our president that year, and Professor Yarborough was the class advisor. With their help we managed to set our sun to drift slowly across the sky.

As our sun drifted, we found ourselves changing from scatter-brained freshmen to swaggering sophomores, who grinned with false benignity on our little freshman brothers and sisters, then winked slyly at our classmates; for, as Roark Bradford says, "We had something in our mind about them." We felt quite masterful and revenge was sweet. We put our sophomore heads together and decided that Goley Yow was good enough to be our president.

When we next glanced up, we found our sun already halfway across the heavens. We were juniors. We had a glorious time. Between our president, Ralph Jacks, and Professor Yarborough, we managed to get through without much trouble. In the breathless excitement, we forgot our sun. The sun was no longer drifting, but fairly whirling itself away into the west.

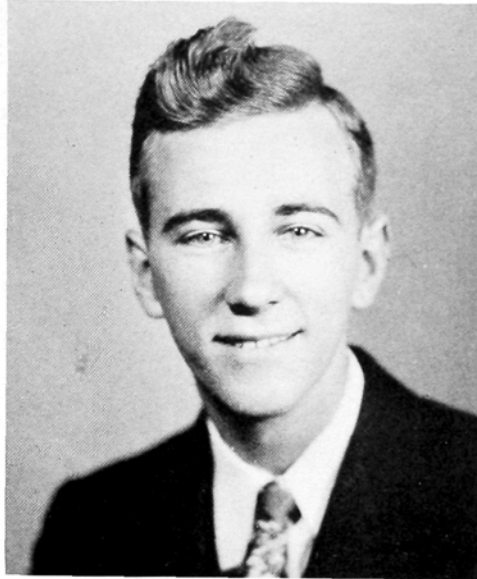
We chose Carl Smith for our president on this last lap. It seems incredible that we have reached the twilight—that the sun of our college careers has sunk into the great abyss of Time. Our hearts might feel heavy if we did not know that graduation is serving as an Aurora to lift the veil so that a sun, more magnificent than the last—the sun of Life—might start its journey across the sky.

We cannot help feeling a little sentimental, here in the dim twilight. Today's sun has sunk; the shadows of the dusk deepen—slowly, slowly, slowly. The sands of the hour-glass begin to sift for a new day, and we know that we shall never pass this way again.

To Professor Yarborough,  
class advisor and faculty  
advisor of the "Zenith", the  
Class of 1933 expresses its  
gratitude for his interest in  
every undertaking of the  
group during the last  
four years.







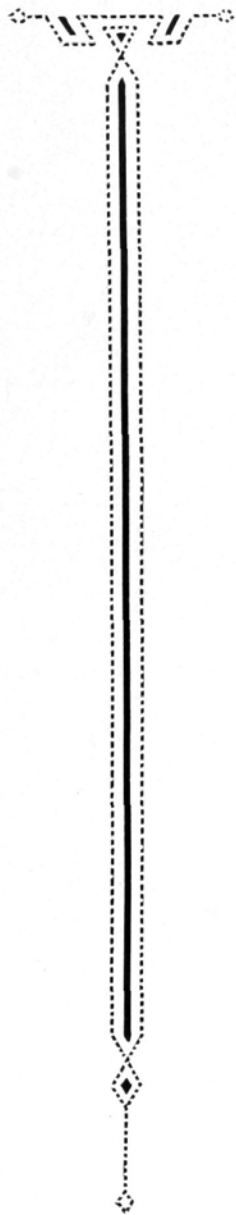
OFFICERS

JOSEPH COBLE . . . . . *President*  
EDITH GUTHRIE . . . . . *Vice-President*  
JEWELL WELCH . . . . . *Secretary*  
FRANCES TAYLOR . . . . . *Treasurer*  
MISS VERA IDOL . . . . . *Advisor*



J U N I O R S

# The Zenith of 1933



## JUNIOR CLASS

ALMA ANDREWS  
HIGH POINT, N. C.

JOHN AUSTIN  
HIGH POINT, N. C.

VIRL ANDREWS  
TRINITY, N. C.

HELEN BETTS  
HIGH POINT, N. C.

SALLIE BIVINS  
GRAHAM, N. C.

LAURA BRASWELL  
HIGH POINT, N. C.

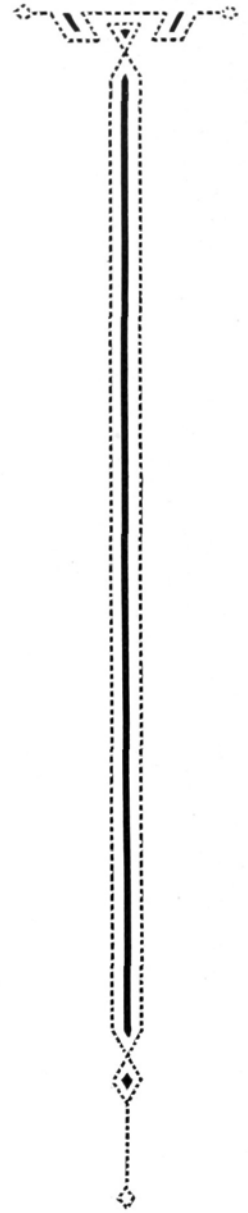
GEORGE CRICKMORE  
HIGH POINT, N. C.

IVAN CRISSMAN  
HIGH POINT, N. C.

THOMAS ELLIS  
HIGH POINT, N. C.

EDITH GUTHRIE  
SAXAPAHAW, N. C.

# The Zenith of 1933



## JUNIOR CLASS

ALICE HAYNES  
HIGH POINT, N. C.



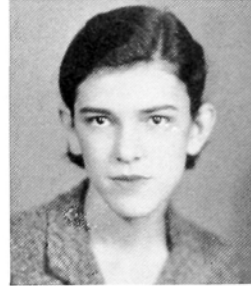
MEETA HEATH  
HIGH POINT, N. C.

SARAH HOLMES  
HIGH POINT, N. C.



CURTISS HUMPHREYS  
HIGH POINT, N. C.

MARY REID IDOL  
HIGH POINT, N. C.



BEN JAMES  
PARMELE, N. C.

DORIS KEENER  
ASHEVILLE, N. C.



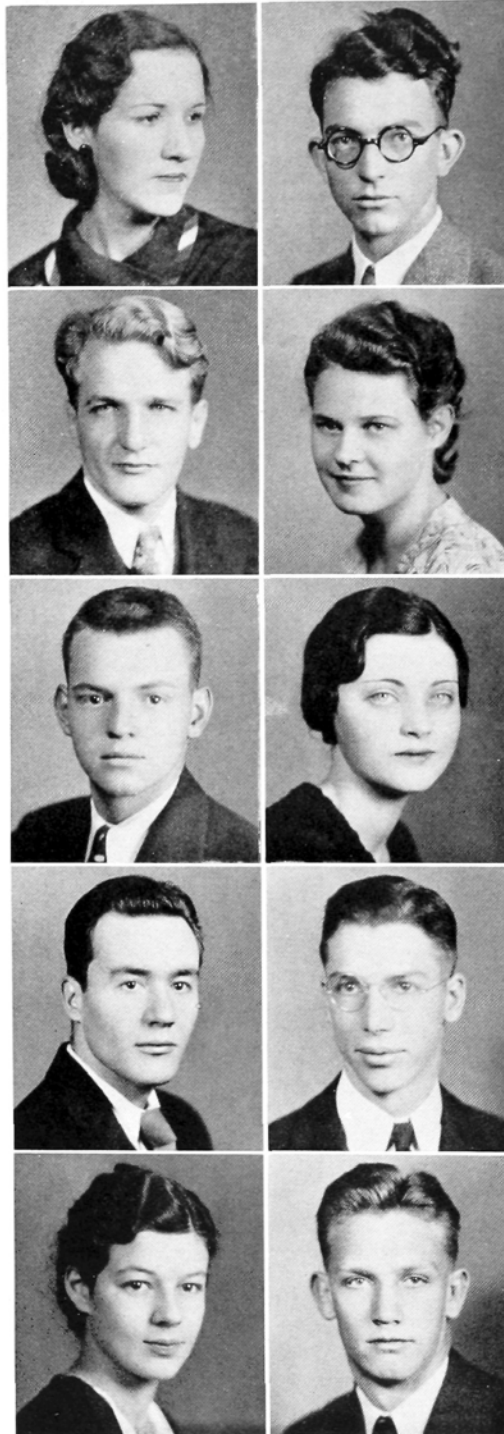
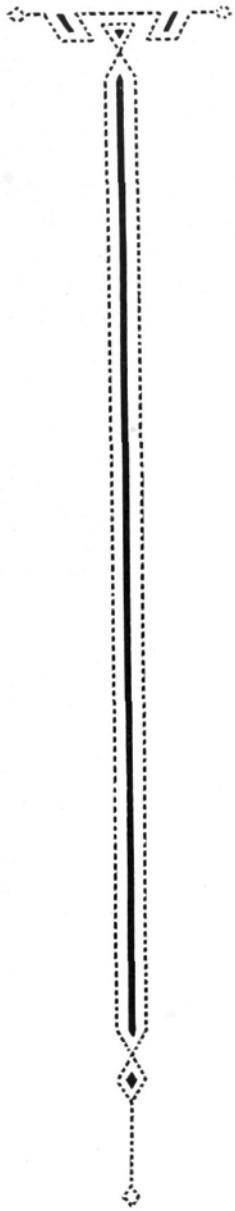
JANE LINGO  
MILTON, DEL.

HOWARD SMITH  
REIDSVILLE, N. C.



TALLIE SUE SMITH  
PILOT MOUNTAIN, N. C.

# The Zenith of 1933



## JUNIOR CLASS

OLA STAFFORD  
BURLINGTON, N. C.

JOE STONE  
KING, N. C.

FRANK SUDIA, JR.  
AMBRIDGE, PA.

FRANCES TAYLOR  
HIGH POINT, N. C.

JOHN TAYLOR  
HIGH POINT, N. C.

ORA MAE WELBORN  
TRINITY, N. C.

JOHN WARD  
GIBSONVILLE, N. C.

FORREST WAGONER  
BROWN SUMMIT, N. C.

JEWELL WELCH  
HIGH POINT, N. C.

ROBERT WILLIAMS  
EFLAND, N. C.

# The Zenith of 1933



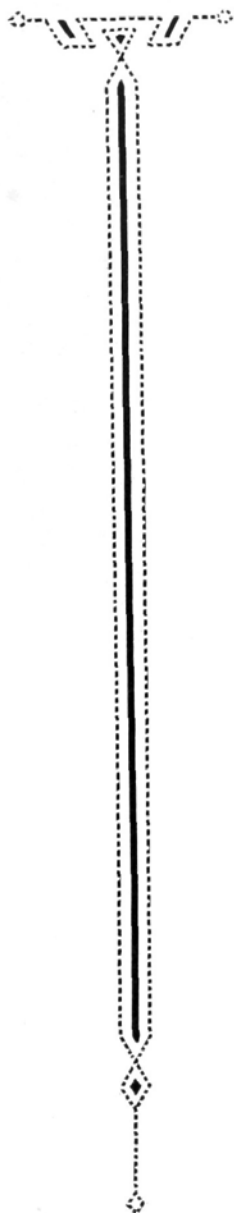
## OFFICERS

- AUBERT SMITH . . . . . *President*  
LARRY YOUNT . . . . . *Vice-President*  
EDITH LEE . . . . . *Secretary*  
G. W. APPLE . . . . . *Treasurer*  
MRS. ALICE P. WHITE . . . . . *Advisor*



# SOPHOMORES

# The Zenith of 1933



## SOPHOMORE CLASS

G. W. APPLE  
REIDSVILLE, N. C.

BURT ASBURY  
HIGH POINT, N. C.

MARGARET BUNDY  
JAMESTOWN, N. C.

IRENE CHADWICK  
JAMESTOWN, N. C.

VIVIAN CRAWFORD  
CHAPEL HILL, N. C.

ARTHUR DICKENS  
HIGH POINT, N. C.

HARRY FINCH  
THOMASVILLE, N. C.

HERBERT GARMON  
HIGH POINT, N. C.

JACQUE GWYN  
WINSTON-SALEM, N. C.

JAMES HIGHT  
HENDERSON, N. C.

EDYTHE HUGHES  
CONCORD, N. C.

MAVIS HESTER  
HENDERSON, N. C.

# The Zenith of 1933

## SOPHOMORE CLASS

MARY WARD JOHNSON  
BURLINGTON, N. C.

IMOGENE KENNEDY  
THOMASVILLE, N. C.

FRANCES KESTER  
HIGH POINT, N. C.

WALTER LANIER  
TAINITY, N. C.

EDITH LEE  
LAWNDALE, N. C.

VIRGINIA MASSEY  
PLEASANT HILL, N. C.

ADYLENE McCOLLUM  
REIDSVILLE, N. C.

FRANCES McCRARY  
HIGH POINT, N. C.

ANNIE LAURIE MOSS  
HIGH POINT, N. C.

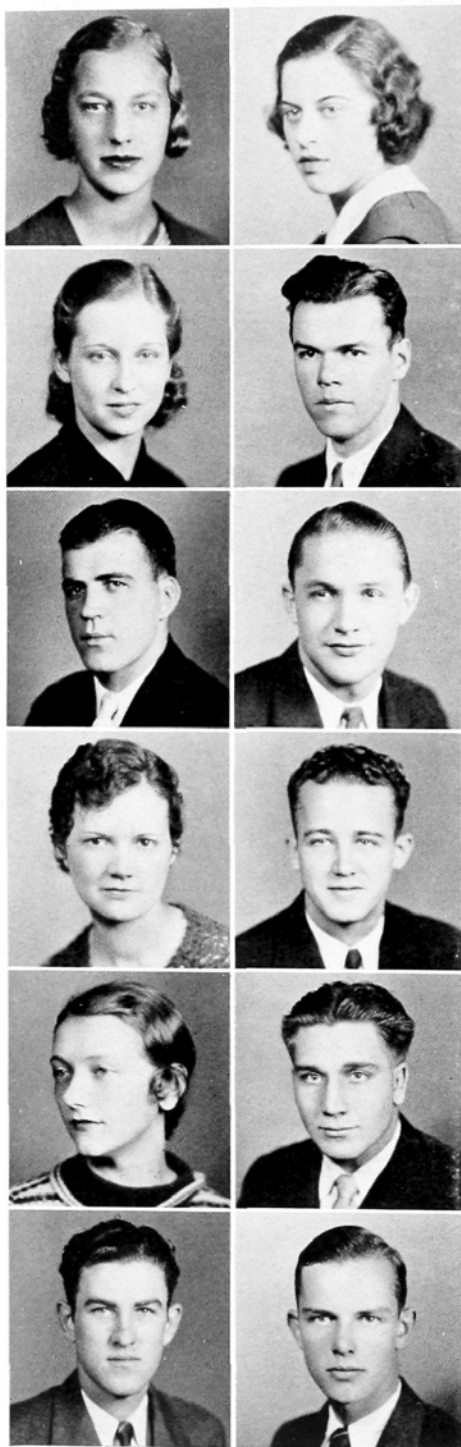
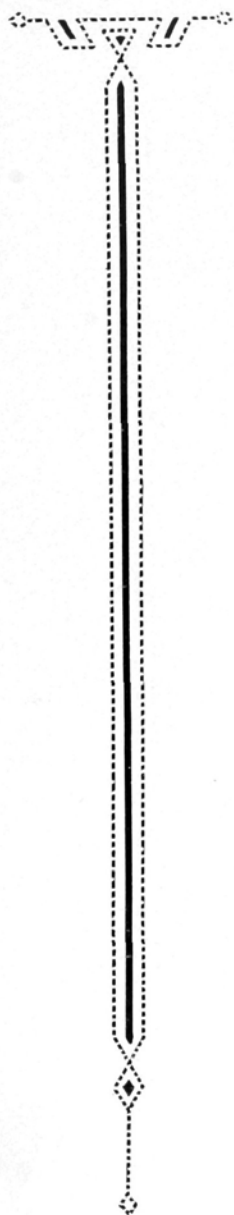
CLARENCE T. MORRIS  
SALISBURY, MD.

JOHN PENDLETON  
LAWNDALE, N. C.

HARVEY PRESSLEY  
HIGH POINT, N. C.



# The Zenith of 1933



## SOPHOMORE CLASS

EMILY RAGSDALE  
JAMESTOWN, N. C.

HELEN RAPER  
HIGH POINT, N. C.

WILMA ROGERS  
HIGH POINT, N. C.

THOMAS ROBERTSON  
HIGH POINT, N. C.

ZOLTAN RONYECZ  
AMBRIDGE, PA.

KENNETH ROYAL  
HIGH POINT, N. C.

MILDRED RUSSELL  
BLAINE, N. C.

RUFFIN SELF  
LINCOLNTON, N. C.

MARY LEWIS SKEEN  
FARMER, N. C.

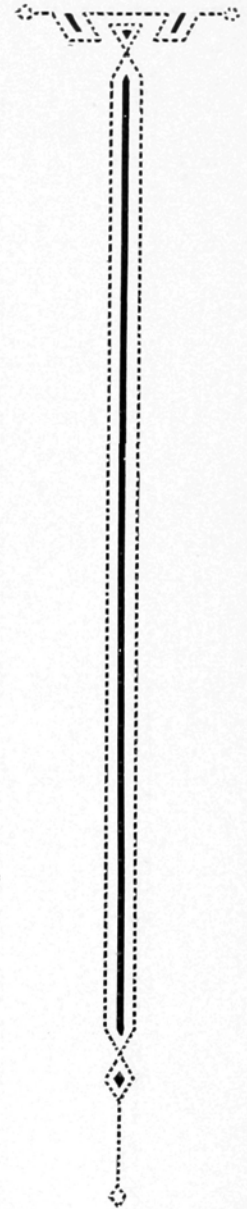
SIDNEY SMITH  
SUMTER, S. C.

PAUL VON CANNON  
SUMMERFIELD, N. C.

LARRY YOUNT  
REIDSVILLE, N. C.



# The Zenith of 1933



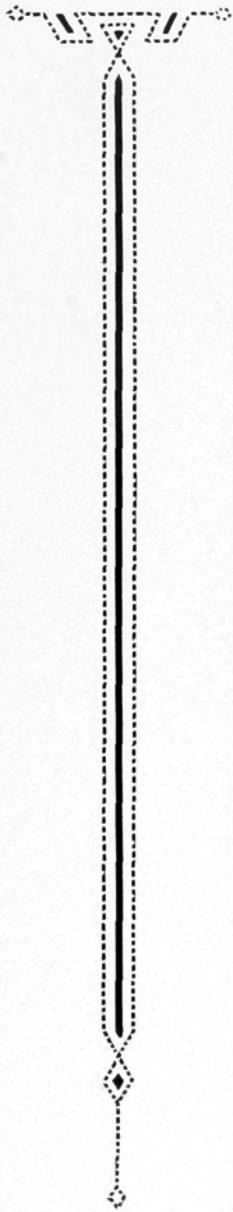
## OFFICERS

DONALD KNOPP . . . . .	<i>President</i>
BILL SNOW . . . . .	<i>Vice-President</i>
DOT PERRY . . . . .	<i>Secretary</i>
ALBERT McNALLY . . . . .	<i>Treasurer</i>
J. H. MOURANE . . . . .	<i>Advisor</i>



# FRESHMEN

# The Zenith of 1933



## FRESHMAN CLASS

DOROTHEA ANDREWS

PATTIE BARTEE

NATHANIEL BETHEA

HAROLD BIVINS

NELL BROWER

WILLIAM BRYANT

ELEANOR CAPPS

GILBERT CLINARD

MELINDA CONNELLY

EDITH CROWDER

BROADUS CULLER

RAYMOND CURRY

ELIJAH DIAMONT

SULON FERREE

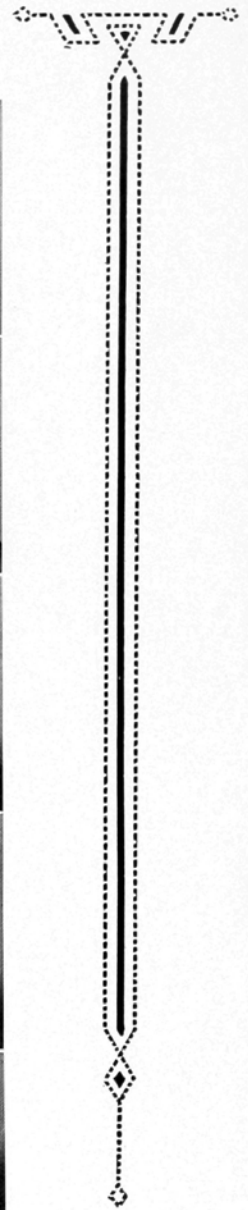
BETTIE LEE FINCH

MACON FURR

DWIGHT GAITHER

RAY GEORGE

# The Zenith of 1933



## FRESHMAN CLASS

FRANCIS GILES



VIRGINIA GRANT

JUANITA HAYWORTH



ATLEY HARTMAN

DORIS HEDGECOCK

LOIS HEDGECOCK

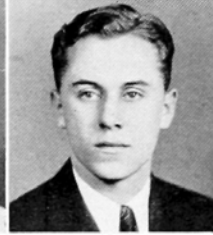


DONALD HUNTER

GEORGE INGLE

MILLARD ISLEY

MILDRED JOHNSTON



JOHN KAPELEC

CHRISTINE LATHAM

RUBY MARTIN



JAMES MASSEY

ALBERT McNALLY

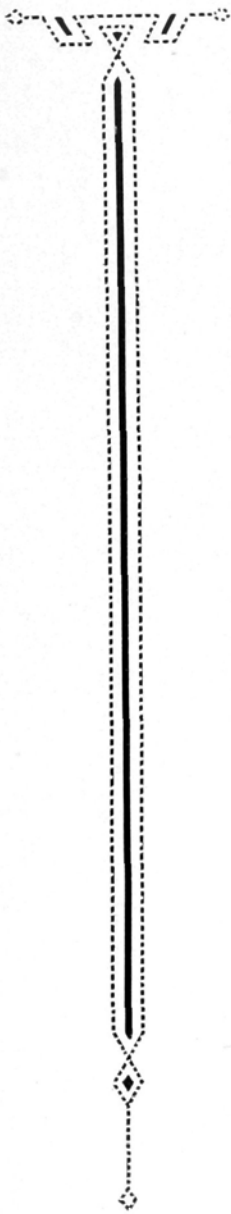
DOROTHY McCOLLUM

JOSIE McNEIL



LAKE MONTGOMERY

# The Zenith of 1933



## FRESHMAN CLASS

MARY PARHAM

DOROTHY PERRY

JAMES PHILLIPS

JESSE PINKSTON

LEE PITTARD

INEZ RIDGE

JOHN RICHARDSON

EDWIN SHARPE

T. G. SHELTON, JR.

LEE SHERRILL

EDGAR SNYDER

BILL SNOW

RAY STOKES

RAYMOND STOKES

JESSE STONE

VATRA SWAIM

CLARA TANNER

DIXIE THOMAS

# The Zenith of 1933

## FRESHMAN CLASS

WILLIAM THOMPSON

LILLIAN VARNER

WILLIAM VON DREHLE

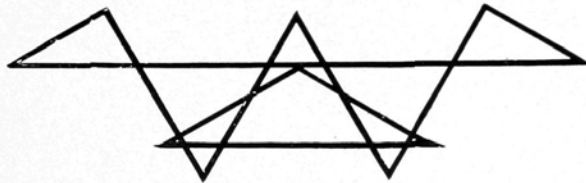
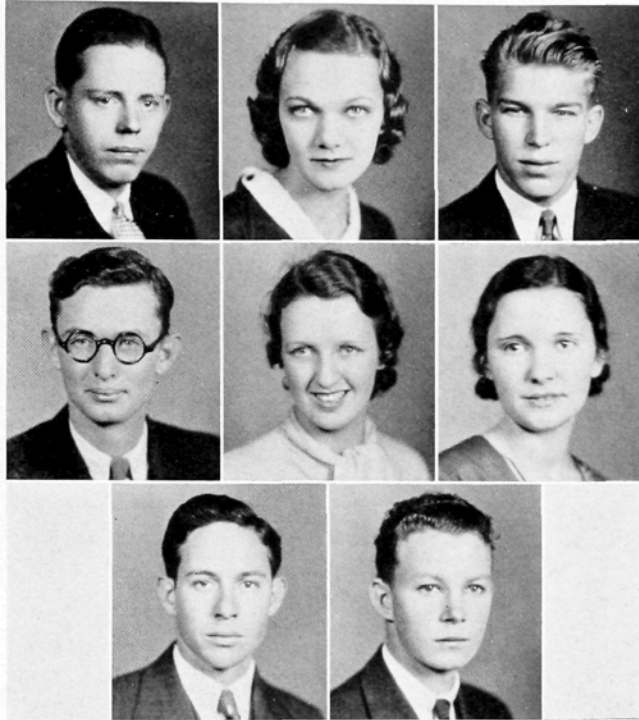
FRANK WHITE

JULIA WILLARD

HAZEL WELBORN

HOYT WOOD

ELMER YOUNG



# The Zenith of 1933



## SPECIAL STUDENTS

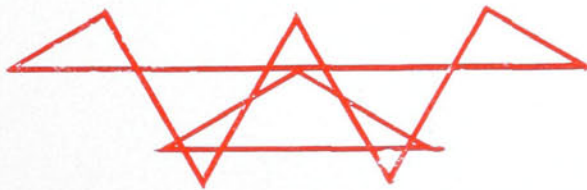
GEORGE BARBEE  
 SALLIE BAYNES  
 MARY E. BENNETT  
 LOIS BIVENS  
 LOISE BROWER

FLORA COBLE  
 MARGARET DUNN  
 MILDRED HAYDEN  
 MILDRED LEONARD  
 PATTIE MASON  
 HILDRETH MCCLELLAN  
 IVA ROBINSON

IRMA ROGERS  
 MONNELL RITCHIE  
 DAPHNE SWIGGET  
 VIRGINIA THAYER  
 WILLIAM SNOTHERLY

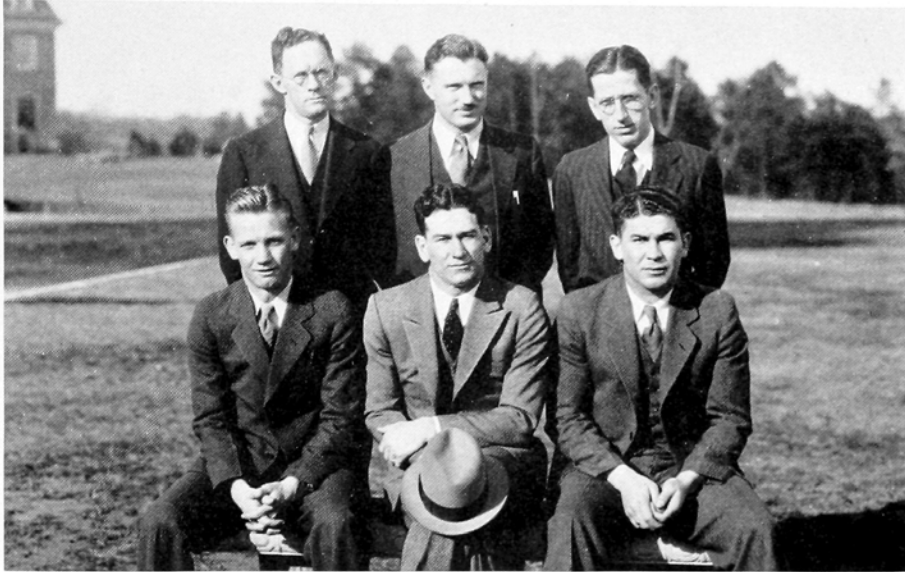


ATHLETICS









## ATHLETIC COUNCIL

C. R. HINSHAW

*Chairman*

J. F. BEALL

J. H. ALLRED

ROBERT WILLIAMS

N. P. YARBOROUGH

H. L. SPESSARD

JOE CRAVER

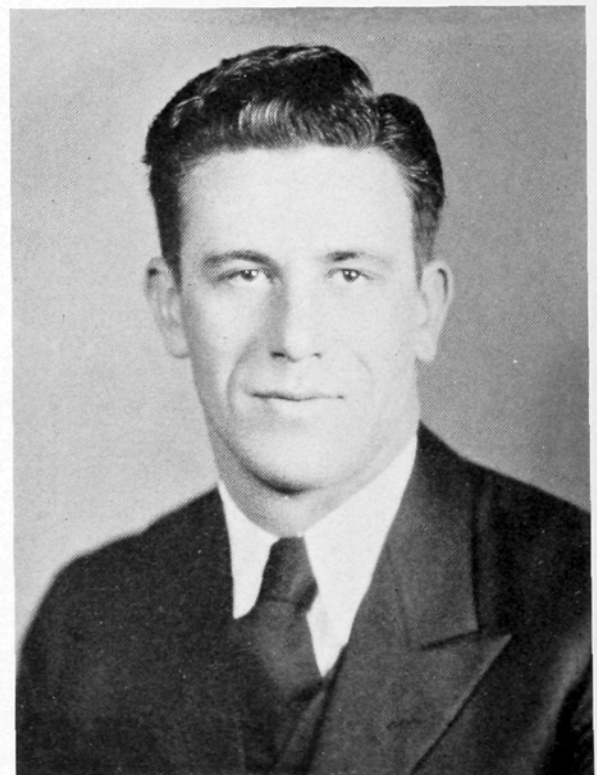


JULIAN F. BEALL

High Point College may point with pride to its well-rounded coaching staff headed by Coach Julian Beall and ably assisted by Coach Virgil Yow. No better leadership can be found in the state than that given by these men, and their efforts have been untiring in keeping High Point's name high in the athletic realms of the state.

The guiding hand behind the Panther gridmen this year has been Head Coach Julian Beall. Beall came to High Point in the fall of 1930 from the University of South Carolina, where he enjoyed an enviable record as an athlete. He is noted for his aggressiveness in attacking a task, regardless of the size,

## THE COACHES



C. VIRGIL YOW

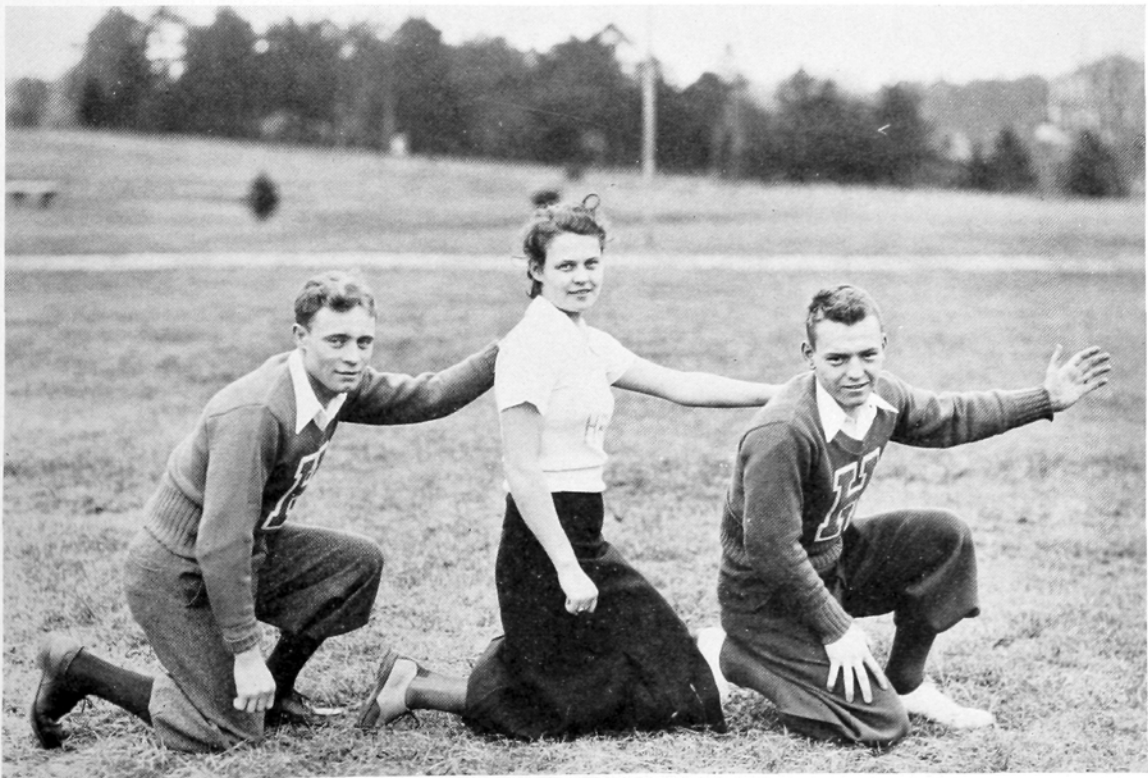
and coming up with an unforgettable smile. Although he has not produced championship teams since he has been here, Coach Beall has earned a reputation for himself, and for High Point College athletic teams. He has definitely imbued them with his characteristic spirit. His teams are noted for their fight in the face of great odds and their comeback ability, thereby enjoying the wholesome respect of coaches and teams in the surrounding colleges. Lack of material has been the sole reason for the teams not enjoying more prosperous seasons.

A former High Point College athlete returned this year to his old hunting grounds to aid with athletics here. "Big Virge," as he was known during his undergraduate days, returned after an absence of two years. During that time he has been

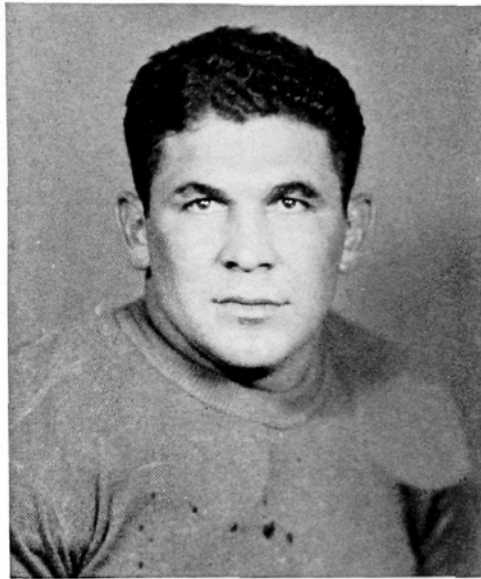
actively connected with coaching duties, leading several industrial teams to championships. While in school Yow was an all-round athlete. In 1928 he was selected by many sport scribes for a tackle berth on the mythical All-Conference team.

Yow assisted Coach Beall during football season and was placed in charge of basketball and baseball teams. He, too, faced the task of molding teams from little or no material, but succeeded in giving us good teams.

These two men have formed a combination that cannot be beaten. They have definitely given their proteges the lesson of good sportsmanship. Their teams are never beaten, regardless of the odds, until the final whistle blows; until the last ball is thrown. They are characterized by aggressiveness, clean sportsmanship and hard hitting.



Play the game—  
But play it fairly  
The surest way to win  
Is "Play an Open Game"—



CAPTAIN JOE CRAVER



FOOTBALL



**CRAVER**

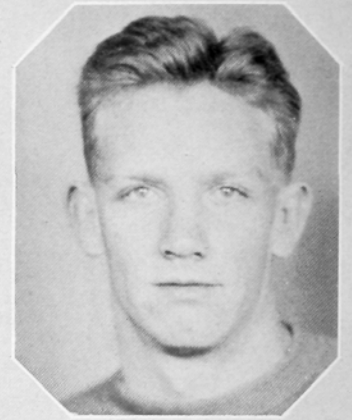
**CRAVER** (*Captain*)—Joe brought his grid career to a close by turning in the best season of his four years as a Panther. He was an almost unanimous selection for one of the All-Conference tackle berths and was also selected by some coaches and sport writers as an All-State tackle.

**WILLIAMS** (*Captain-elect*)—"Pinkie," playing his first year of varsity ball, was outstanding in a heavy line for his aggressiveness. The fact that he was chosen at the end of the season to captain the 1933 Pack speaks for his ability at the pivot position.

**ROYAL**—Ken is one of the most dependable little men to ever wear a Panther uniform. He could swing out of his guard position, throw a high body block on the Crescent Limited, and come up smiling. This was his third year on the varsity.

**GARMON**—"Old Lady" Garmon will always be remembered as the hefty tackle with an enormous appetite for action—even in pictures. He was a hard man to stop—once he got warmed up.

**JAMES**—Ben, unfortunately, tried to carry a heavy P. C. team on a sight-seeing tour of Winston-Salem



**WILLIAMS**



**ROYAL**



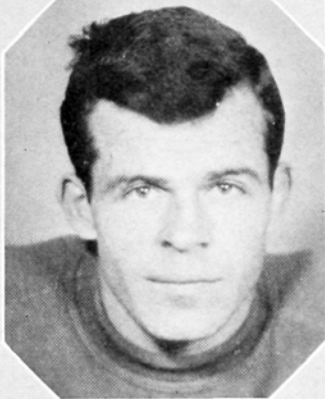
**JAMES**



**KNOPP**



**GARMON**



**BRYANT**

—on his shoulder—and was, therefore, out during the latter part of the season with a painful injury. He has one more year of football before him and ought to be among the "greats" next year.

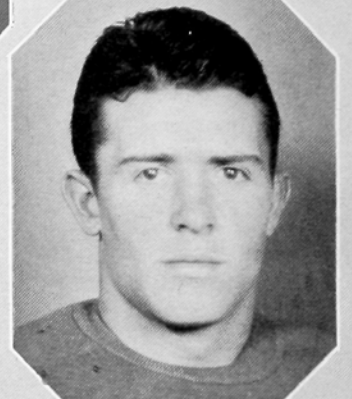
**KNOPP**—Don, the light-haired, mild-voiced little Pennsylvanian, came in just a little late, but in plenty of time to prove that he is a back that is a back. He is a freshman, and should see three good years of football as a Panther.

**BRYANT**—"Pop," cavorting as a Panther for his first year, gave promise of offering great things as a back before his school career ends. A good ball-carrier and one of the best defensive players is a brief summary of his ability.

**SHERRIL**—"Dream Boy," freshman fullback, shouldered most of the kicking and passing duties of the Pack. With three more years of football before him he should make one of the best backs in the Conference.

**PUSEY**—Injuries could not stop this flashing red-head from Delaware, who played the last few games of the season while handicapped by an injured arm. Courage under pressure, speed and aggressiveness characterized every minute of Pusey's play.

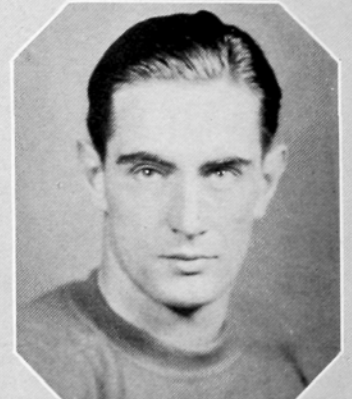
**SWART**—Ken, playing his last year with the Pack, had one of his best seasons. Little ground was gained by the opposition around his end of the line, and it was a familiar sight to see this speedy flankman drift in behind the interference and bring down the ball-carrier.



**SHERRIL**



**PUSEY**



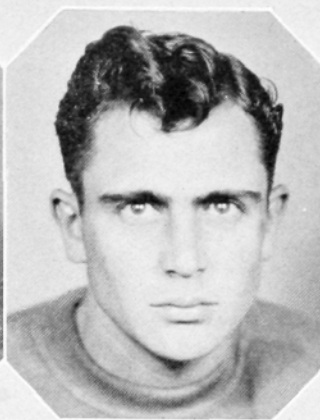
**SWART**



**SMITH**



**STONE**



**PHILLIPS**



**GRAHAM**

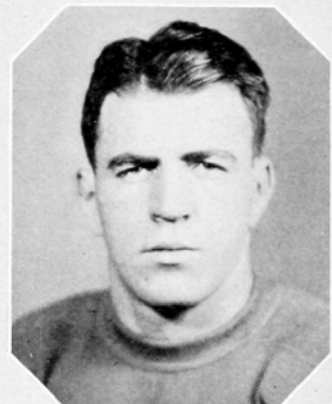


**PINKSTON**

**SMITH**—"Burr-Head," a hefty back from South Carolina, was the only experienced backfield man to return to school, and was called upon to do the "heavy work" of the backfield. One of the best defensive men on the squad, "Smitty" could also be depended on for a couple of yards through the line at any time.

**PINKSTON**—This boy will always be remembered for the great defensive game against P. C. in Winston-Salem. One sport writer said of it: "The defensive game put up by this boy in a faded purple jersey outshone by far the brilliant offense of the entire P. C. team."

**FURR**—This big guard from Kannapolis, while only a freshman, saw enough service to prove that he has the making of a good lineman.



**RONYECZ**



**FURR**



**LOHR**



**GAITHER**



**RITCHIE**

**CANNOY**—After three years of apprenticeship, Cannoy took advantage of his opportunities and broke into enough games to prove that he was a courageous little guard of no mean ability.

**STONE**—In his first year of college football, Stone came through and developed into one of the most aggressive ends in the Panther camp. He is a freshman and is eligible for three more years of varsity competition.

**PHILLIPS**—This little boy ran the "pony backfield" and made a very good job of it. He has the making of a varsity quarterback.

**GRAHAM**—Ray was handicapped a great part of the season by injuries. He developed into a good defensive man and was one of the best pass-snatchers in the Panther camp.

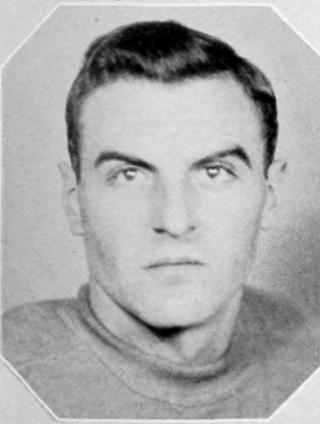
**RONYECZ**—"Bobo" was general handy man, playing his end with the best of them

and dropping back when necessary to get off a punt. He is a sophomore and will have two more seasons to roam the flanks of Panther teams.

**RITCHIE**—Coming out after a successful high school football career, this local boy took over the quarterback duties for the Pack in his freshman year. He proved to be a brainy little field general.

**GAITHER**—This boy was Statesville's contribution to the "pony backfield." He is a fast and elusive runner and should develop into a good varsity man.

**LOHR**—"Soldier" had a great deal of trouble in teaching the boys the "private's vocabulary" early in the season. He is a scrappy little guard who will see much action on the varsity within the next three years.



**CANNOY**



*Back row:* COACH BEALL, ROYAL, SWART, SMITH, BRYANT, WILLIAMS, CAPTAIN CRAVER  
*Front row:* FURR, GRAHAM, PUSEY, HRITSIK, RONYECZ

## RESUME

Taken from a standpoint of games won and games lost, the 1932 football season might not seem very successful. However, considering the handicap caused by the lack of experienced material, the season was not so disastrous. The lack of experience instigated the boys to fight harder, making the opponents earn every single yard they made.

The highlights of the season occurred when Appalachian and Elon fell victims of the Panthers. According to sport scribes both teams were rated superior—before the game. However, the Panthers decisively outplayed them.

The Pack went down to Spartanburg to open the season against the Wofford Terriers. The Terriers had things pretty much their own way to win, 35 to 0.

The Indians of Catawba took the second game. Led by an elusive phantom, Ceasaro, the boys from Salisbury gained a 28 to 0 decision.

Presbyterian College flashed a snappy offense against the Panther in Winston to win the third

game, 39 to 0, despite a great defensive game some of the Panthers put up.

Panther stock received a severe setback when Guilford upset the dope bucket and smashed out a 45 to 0 win. The Panther defense crumbled in the last half.

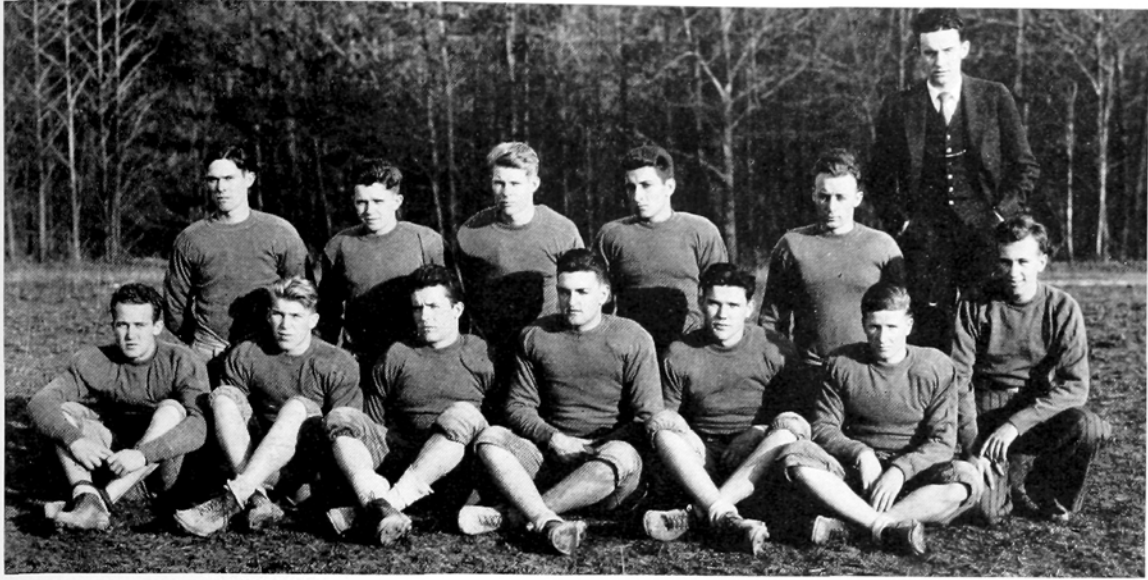
The second Panther invasion of South Carolina soil almost brought results. Erskine scraped a 9 to 0 win off the scrapping Panthers.

The Beallmen came into their own on Home-Coming Day. The Pack pushed Elon around for a six-point victory in a thrilling exhibition of football. The 1932 victory is the first in several years over the Elonites.

Yet tasting the blood of Elon, the Pack placed a strong Appalachian team on the skids to gain a 13 to 6 decision.

The final game was played—or swum—against Lenoir-Rhyne. A heavy rain slowed up the Panther offensive, giving the Bears a chance to scrub a 19 to 0 win.

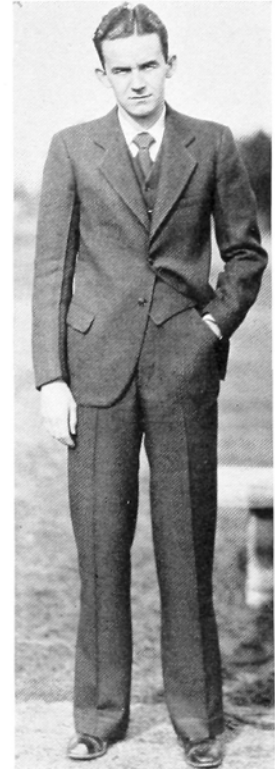




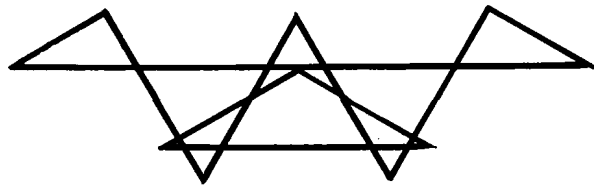
*Back row:* STOKES, HUNTER, PINKSTON, INGLE, KNOPP, MANAGER DAVIDSON  
*Front row:* SELF, VON DREHLE, SHERRILL, THOMPSON, CRISSMAN, FERREE, TRAINER COBLE

## THE RESULTS

High Point .....	0
Wofford .....	35
High Point .....	0
Catawba .....	28
High Point .....	0
P. C. ....	39
High Point .....	0
Guilford .....	45
High Point .....	0
Erskine .....	9
High Point .....	6
Elon .....	0
High Point .....	13
Appalachian .....	6
High Point .....	0
Lenoir-Rhyne .....	19



DWIGHT DAVIDSON  
*Manager*



---

---

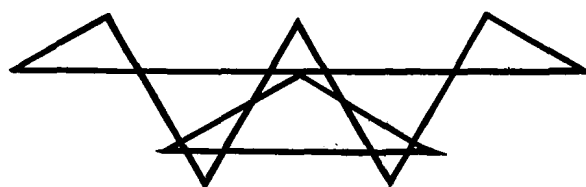
CO-CAPTAINS

CARL SMITH

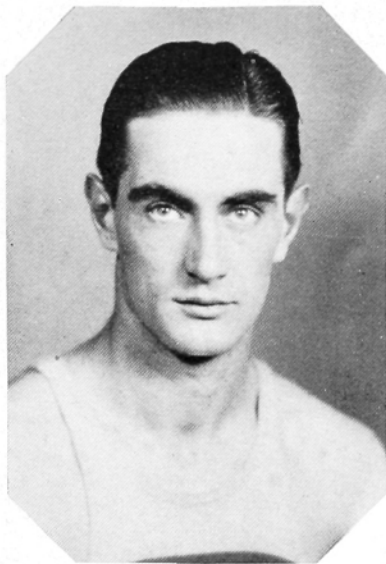
KENNETH SWART

---

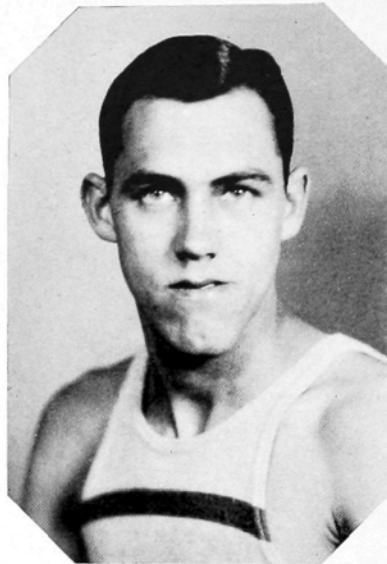
---



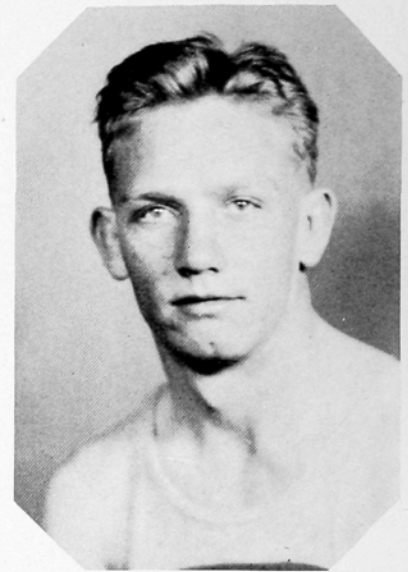
BASKETBALL



SWART



MORRIS



WILLIAMS

### KEN SWART

Ken brought his basketball career to a close with an exceptionally good season. Contrary to popular opinion, he proved to be as strong on offense as on defense. He shared the duties of captain with Smith and shouldered this added responsibility in great style.

### CLARENCE MORRIS

Morris is one of the three seniors who saw action this year. Although he did not play in every game, he broke into enough to display a knowledge and love for the popular sport. Some of his side court hook shots were good enough to put a couple of games on the ice.

### ROBERT WILLIAMS

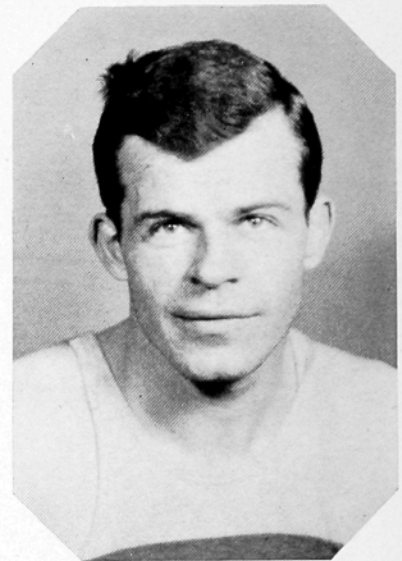
Campus "experts" do not hesitate to predict a great season for the "pink-haired" flash from Efland next year. He developed into one of the best men on the squad and is second to none in courage and sportsmanship.

### BILL BRYANT

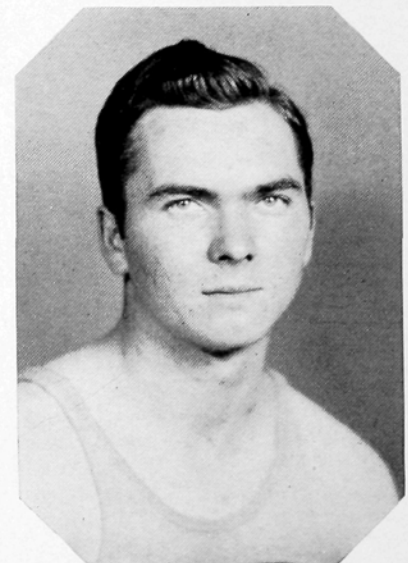
"Pop" Bryant is another of the first year men who is expected to shine next year. He was an understudy for one of the guard berths and got into enough games to prove that he will be there next year.

### RAY GEORGE

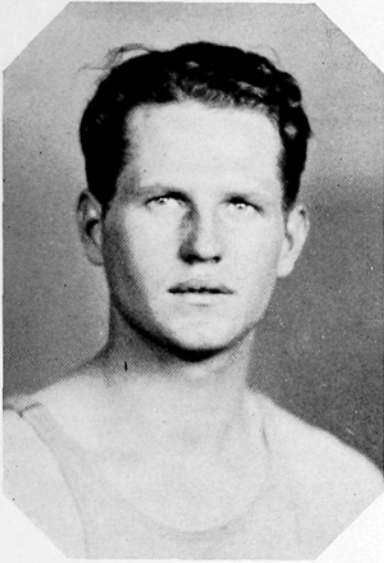
Ray is a fast little forward who should deliver the goods before he leaves school. He was not a regular, but did take every opportunity to show that he could deliver when needed.



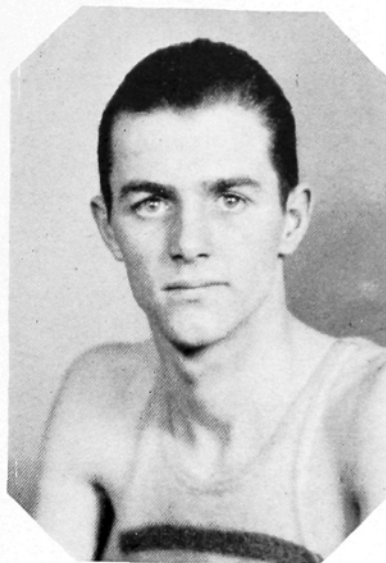
BRYANT



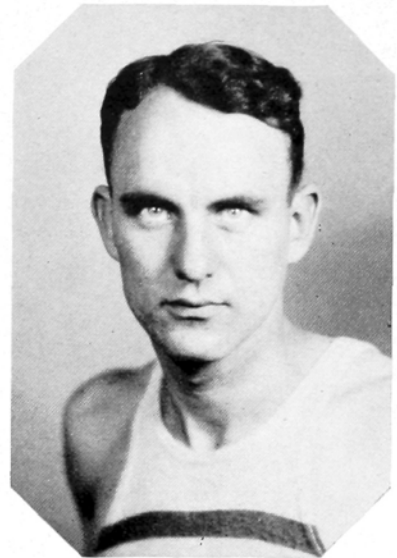
GEORGE



GRAHAM



CULLER



CARL SMITH

#### CARL SMITH

"Smitty" shared the duties of captain with Swart this year and yet found time to put out a brand of play that deserves mention. A consistent point maker was not his only quality, as he is one of the best defensive guards in the conference.

#### BROADUS CULLER

Culler came out for the varsity with a brilliant high school record behind him. The jump from high school to college did not prove too great for him and he performed just as brilliantly on the hardwood for the Panthers. Great things are expected from the diminutive forward.

#### RAY GRAHAM

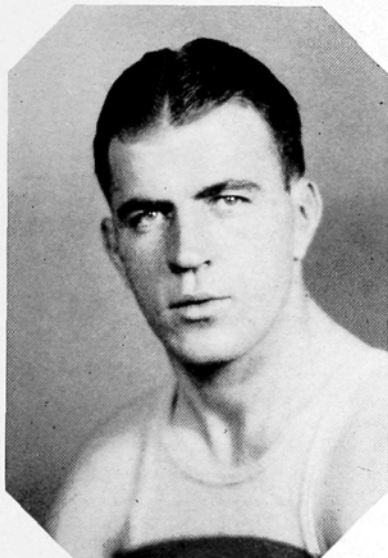
Graham, playing his first year on a Panther basketball team, handled the center position in great style. He was one of the big guns in the offense of the Pack, and was continually hanging around to check the scoring aspirations of the opposing pivot man.

#### ZOLTAN RONYECZ

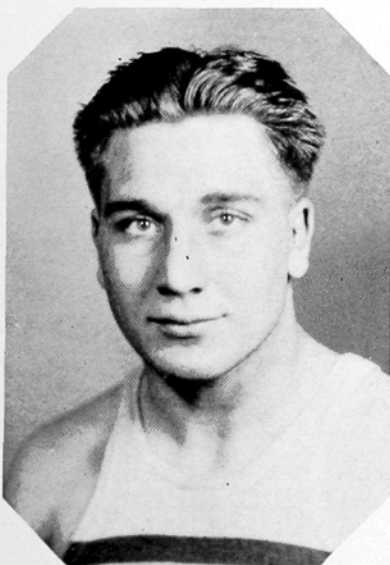
"Bobo" came back after an absence of one year to become the Panther "handy man." He was shifted to every position on the court and delivered the same steady game from each. He has two more years of happy hunting with the Pack.

#### SIDNEY SMITH

Sid was not used as a regular this year, but he always delivered the goods when sent into the game. He handles the ball well and should give a good account of himself during the next two years.



RONYECZ



SID SMITH



BEN JAMES, *Manager*

## RESULTS

High Point . . . . . 40;	H. P. Y. M. C. A. . . . . 35
High Point . . . . . 30;	Kannapolis Y. . . . . 33
High Point . . . . . 52;	N. C. C. W. . . . . 8
High Point . . . . . 58;	Gibsonville A. C. . . . . 27
High Point . . . . . 29;	Catawba . . . . . 31
High Point . . . . . 30;	Appalachian . . . . . 29
High Point . . . . . 35;	Lenoir-Rhyne . . . . . 40
High Point . . . . . 47;	Catawba . . . . . 52
High Point . . . . . 29;	Kannapolis Y. . . . . 31
High Point . . . . . 40;	Atlantic Christian . . . . . 38
High Point . . . . . 35;	E. C. T. C. . . . . 33
High Point . . . . . 43;	Guilford . . . . . 46
High Point . . . . . 38;	Appalachian . . . . . 51
High Point . . . . . 32;	Elon . . . . . 38
High Point . . . . . 36;	Atlantic Christian . . . . . 47
High Point . . . . . 53;	Guilford . . . . . 41
High Point . . . . . 46;	E. C. T. C. . . . . 24
High Point . . . . . 35;	N. C. C. W. . . . . 29
High Point . . . . . 49;	Lenoir-Rhyne . . . . . 37
High Point . . . . . 31;	Elon . . . . . 32



## PURPLE KITTENS

The Purple Kitten squad was organized under the direction of Winfred Beck, assistant in the Physical Education Department. These basketball players were selected from the boys who were not quite good enough for the varsity squad, yet, showed much prospect.

Much credit is due Beck for his persistence in drilling the boys in the fundamentals of the game, and to Coach Yow, who also found time to aid the squad. Although not as successful in the number of wins as they might have been, the young Panthers put up some good games against their opponents.

Jim Patch and Lee Sherrill were the ball-hawk forwards, while Cannoy and Crickmore were the mainstays at guard. Davidson and Furr alternated at the pivot post. Beck had plenty of reserve material in the other boys.

# BASEBALL

After a lapse of two years, baseball was reinstated at High Point this year under the direction of Coach Virgil Yow. The national pas-time had been abolished for the two previous years due to the lack of the required facilities.

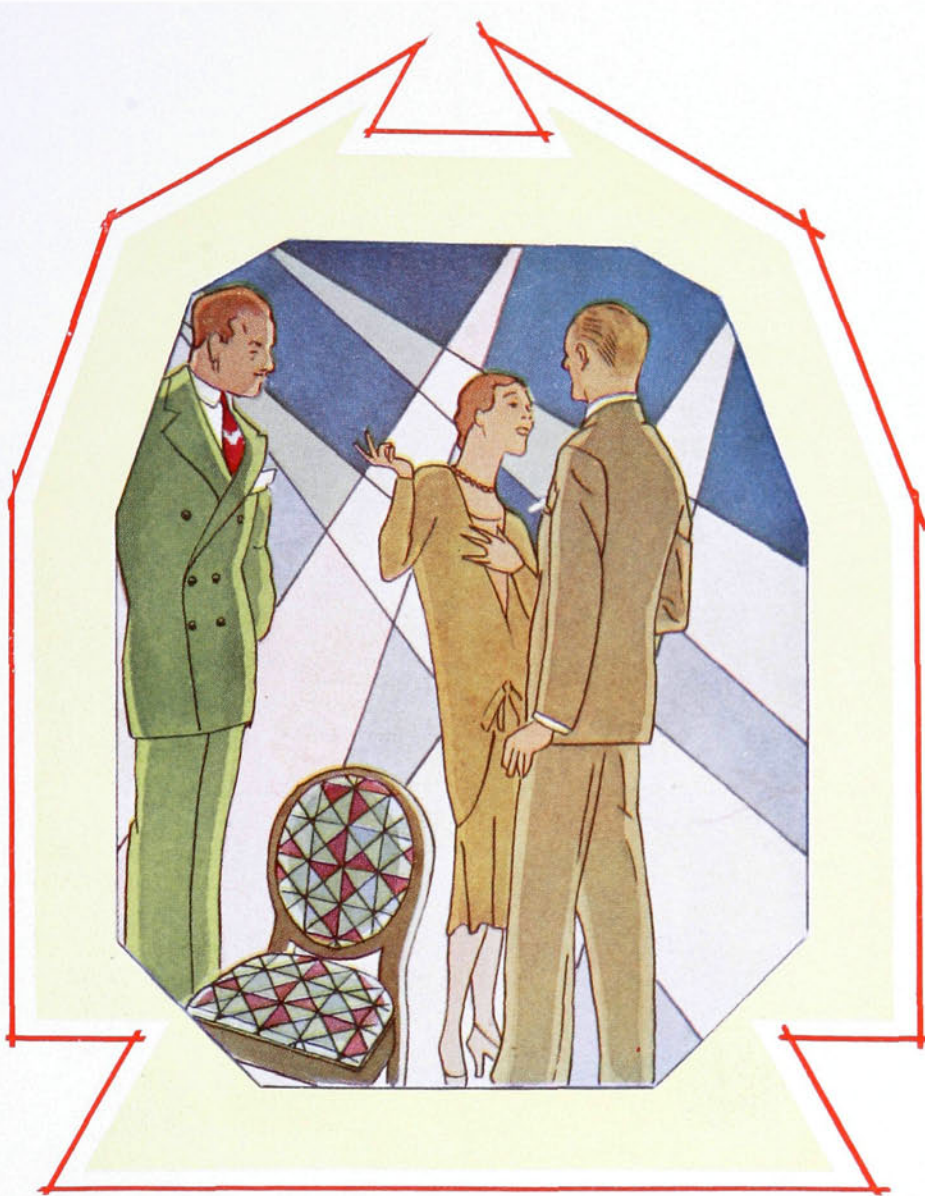
Coach Yow, serving his first year as baseball mentor, was confronted with the task of molding a team from green material. When the first call for practice was issued in March, only three men reported who had seen any service as college baseball players. However, there was a strong array of talent reporting for practice, giving Coach plenty of inexperienced material to pick from for the Panther nine.

An extensive schedule was arranged for the Purple and White diamond artists. All the teams in the North State Conference were met as well as teams from other colleges. Considering the two-year lay-off, Coach Yow and the boys deserve much credit for the showing they made in all games.

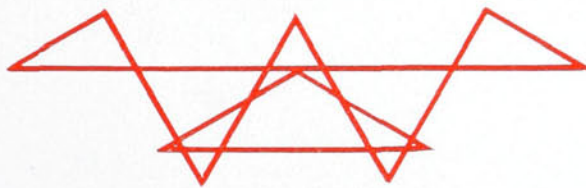
## NORTH STATE CONFERENCE SCHEDULE

April 1 . . . . .	Atlantic Christian
April 4 . . . . .	Catawba
April 11 . . . . .	Guilford
April 13 . . . . .	Elon
April 15 . . . . .	Guilford
April 21 . . . . .	Elon
April 26 . . . . .	Lenoir-Rhyne
April 29 . . . . .	Catawba
May 4 . . . . .	Lenoir-Rhyne
May 6 . . . . .	Guilford
May 9 . . . . .	Atlantic Christian





# ORGANIZATIONS





# The Zenith of 1933



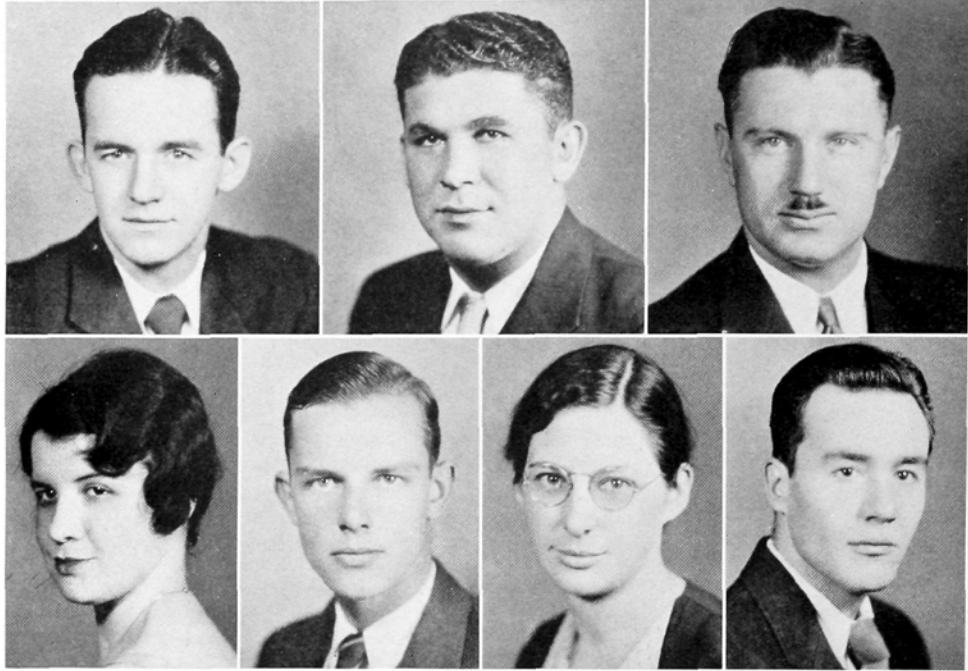
## CHRISTIAN ENDEAVOR SOCIETY

*"For Christ and the Church"*

### OFFICERS

W. M. HOWARD . . . . .	<i>President</i>
OLA STAFFORD . . . . .	<i>Vice-President</i>
MARGARET PICKETT . . . . .	<i>Secretary</i>
LESTER FURR . . . . .	<i>Treasurer</i>
G. W. APPLE . . . . .	<i>Monitor</i>

# The Zenith of 1933



## ZENITH STAFF

DWIGHT DAVIDSON, JR. . . . . *Editor-in-Chief*  
 JOE CRAVER . . . . . *Business Manager*  
 N. P. YARBOROUGH . . . . . *Faculty Advisor*  
 ELIZABETH GURLEY . . . . . *Associate Editor*  
 LARRY YOUNT . . . . . *Sports Editor*  
 DORIS KEENER . . . . . *Associate Editor*  
 JOHN WARD . . . . . *Feature Editor*

# The Zenith of 1933



## HI-PO STAFF

JOHN K. WARD . . . . . *Editor-in-Chief*  
ARTHUR DICKENS . . . . . *Business Manager*  
ROBERT WILLIAMS . . . . . *Managing Editor*  
    JOHN TAYLOR . . . . . *Associate Editor*  
    FRANCES TAYLOR . . . . . *Feature Editor*  
    DWIGHT DAVIDSON . . . . . *Associate Editor*  
    MRS. ALICE P. WHITE . . . . . *Faculty Advisor*

# The Zenith of 1933



## ARTEMESIAN LITERARY SOCIETY

*Mascot:* BETTY AUMAN

*Motto:* Maidenly Virtue and Purity

*Colors:* Green and Gold

*Flower:* Jonquil

### OFFICERS

INA McADAMS . . . . .	<i>President</i>	JOYCE JULIAN . . . . .	<i>Chaplain</i>
JANE LINGO . . . . .	<i>Vice-President</i>	ALMA ANDREWS . . . . .	<i>Pianist</i>
EDYTHE HUGHES . . . . .	<i>Secretary</i>	ADYLENE MCCOLLUM . . . . .	<i>Chorister</i>
DORIS KEENER . . . . .	<i>Treasurer</i>	MARY WARD JOHNSON . . . . .	<i>Monitor</i>
ELIZABETH ROSS . . . . .	<i>Critic</i>	FRANCES TAYLOR . . . . .	<i>Forensic Council Rep.</i>

# The Zenith of 1933



## AKROTHINIAN LITERARY SOCIETY

Organized 1926

*Colors:* Green and White

*Flower:* Fern

*Motto:* Find a Way or Make One

### OFFICERS

<i>Fall Semester</i>		<i>Spring Semester</i>
TONY SIMEON . . . . .	<i>President</i> . . . . .	DWIGHT DAVIDSON
ROBERT WILLIAMS . . . . .	<i>Vice-President</i> . . . . .	JOHN TAYLOR
GEORGE CRICKMORE . . . . .	<i>Secretary</i> . . . . .	JOHN WARD
HARVEY PRESSLEY . . . . .	<i>Assistant Secretary</i> . . . . .	PAUL VONCANNON
LARRY YOUNT . . . . .	<i>Treasurer</i> . . . . .	LARRY YOUNT
JOHN WARD . . . . .	<i>Critic</i> . . . . .	TONY SIMEON
JOHN WARD . . . . .	<i>Forensic Council Representative</i> . . . . .	JOHN WARD
HARRY FINCH . . . . .	<i>Marshal</i> . . . . .	DON HUNTER

# The Zenith of 1933



## NIKANTHAN LITERARY SOCIETY

NELLE MARIE HUMPHREYS, *Mascot*

*Colors:* Lavender and White

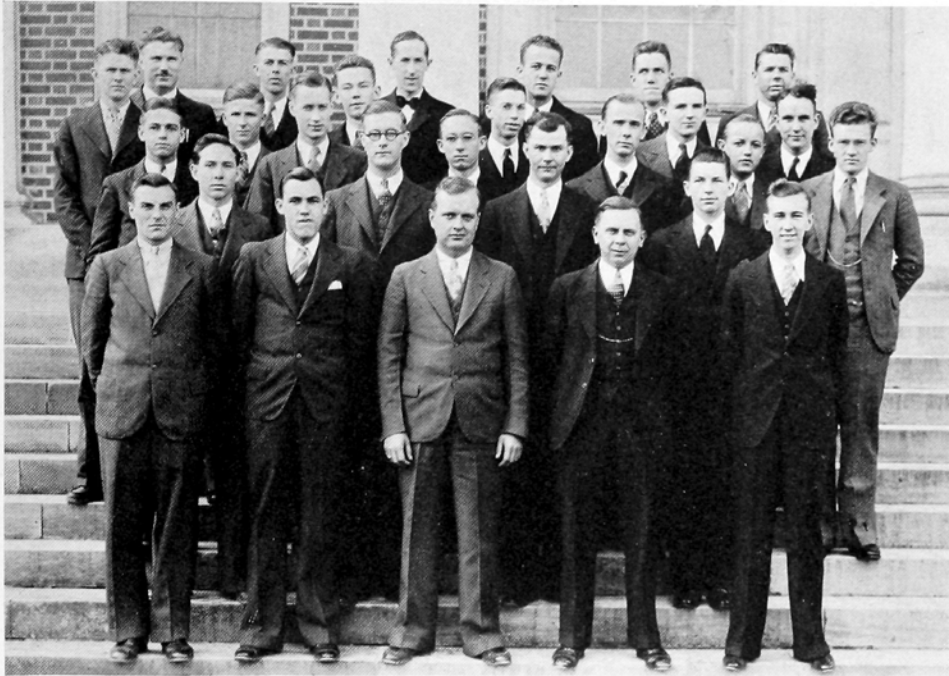
*Flower:* Lavender Iris

*Motto:* Victory Crowns Patience

### OFFICERS

ELIZABETH GURLEY . . . . . <i>President</i>	ELVA CARTNER . . . . . <i>Chorister</i>
EDITH GUTHRIE . . . . . <i>Vice-President</i>	ORA MAE WELBORN . . . . . <i>Treasurer</i>
VIRGINIA MASSEY . . . . . <i>Secretary</i>	UNITY NASH . . . . . <i>Chaplain</i>
LAURA BRASWELL . . . . . <i>Pianist</i>	AGNES INGRAM . . . . . <i>Critic</i>
MILDRED RUSSELL . . . . . <i>Monitor</i>	UNITY NASH . <i>Forensic Council Representative</i>
MADLYN PACKER . . . . . <i>Reporter</i>	





## THALEAN LITERARY SOCIETY

Organized 1924

*Colors:* Purple and Gold

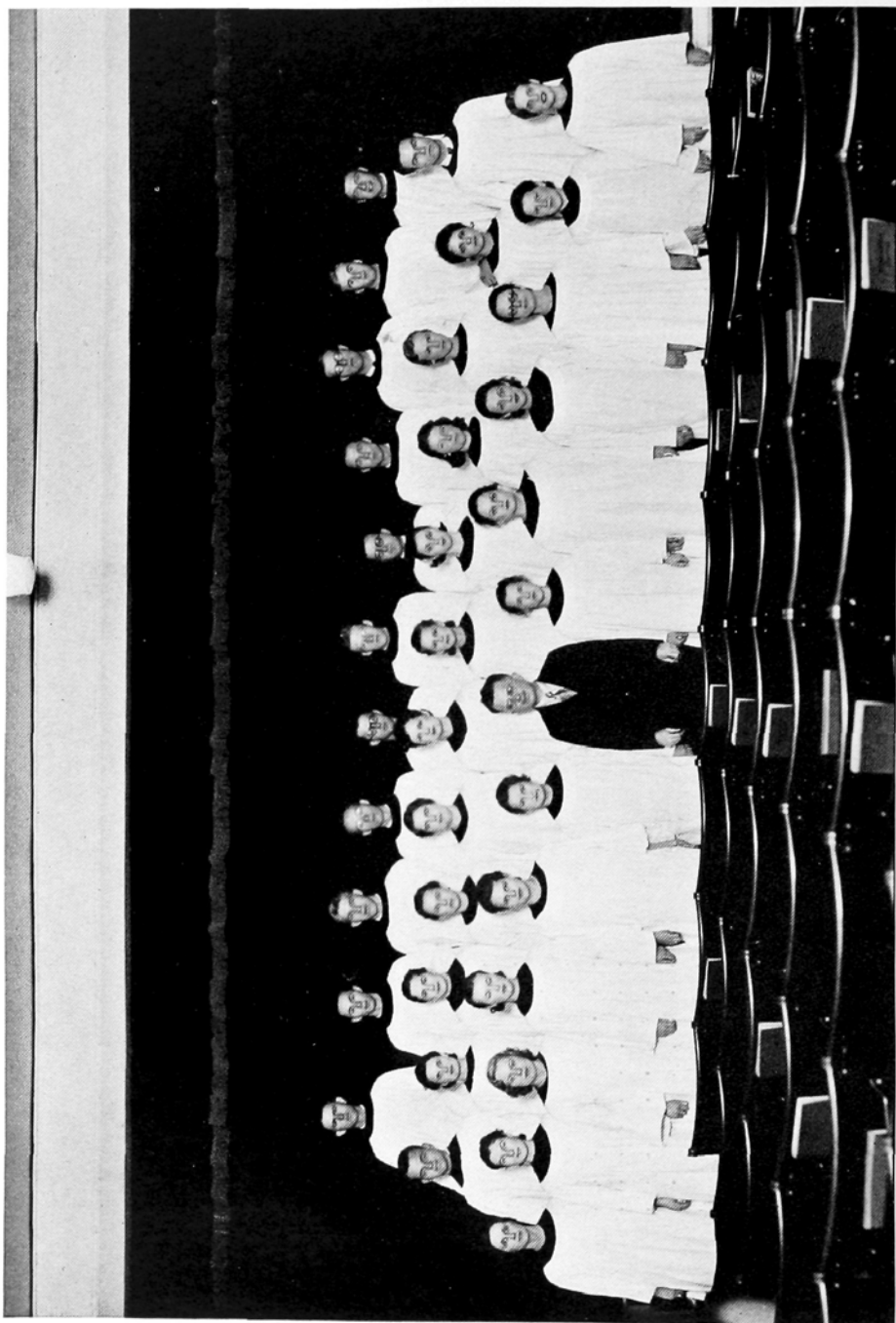
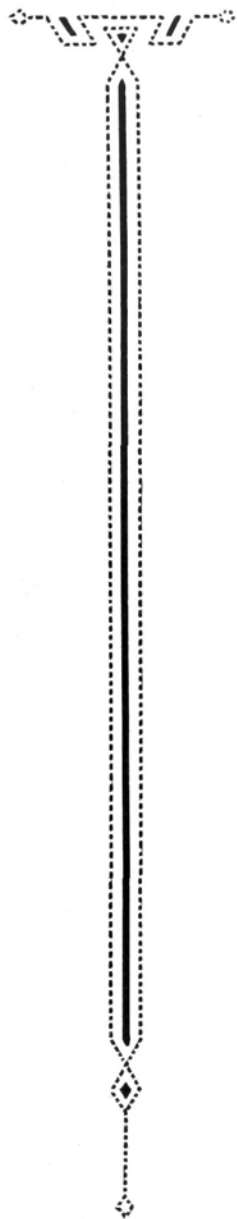
*Flower:* White Rose

*Motto:* Master First Ourselves

### OFFICERS

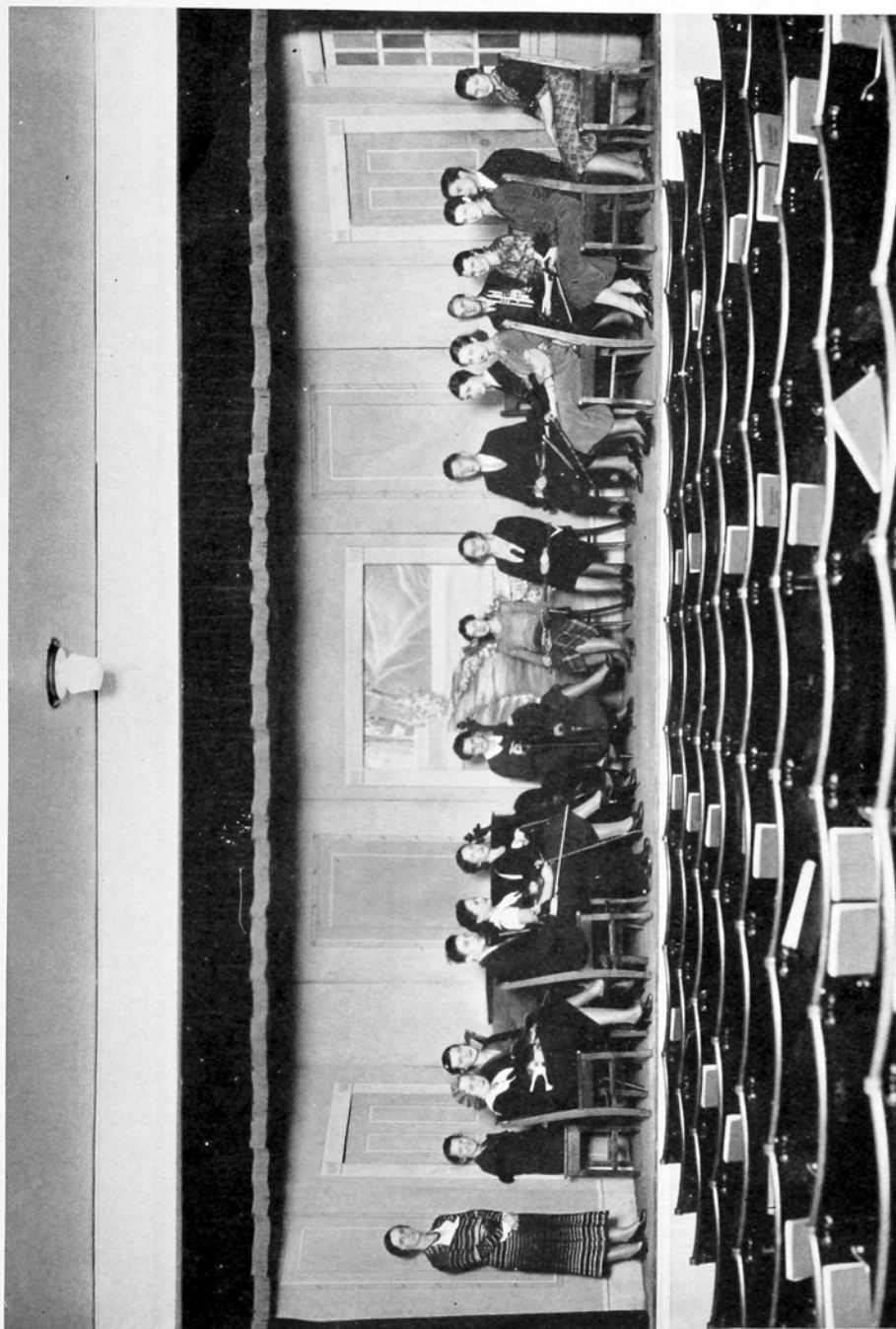
<i>Fall Semester</i>		<i>Spring Semester</i>
RALPH JACKS . . . . .	<i>President</i> . . . . .	LESTER FURR
TYREE LINDLEY . . . . .	<i>Vice-President</i> . . . . .	VERNON CANNOY
OLLIE KNIGHT . . . . .	<i>Secretary</i> . . . . .	HOWARD PICKETT
G. W. APPLE . . . . .	<i>Assistant Secretary</i> . . . . .	JOHN AUSTIN
LESTER FURR . . . . .	<i>Treasurer</i> . . . . .	MARVIN HEDRICK
CARL SMITH . . . . .	<i>Critic</i> . . . . .	RALPH JACKS
FORREST WAGONER . . . . .	<i>Chaplain</i> . . . . .	MILLARD ISLEY
HOWARD PICKETT . . . . .	<i>Society Reporter</i> . . . . .	OLLIE KNIGHT
JOE COBLE . . . . .	<i>Press Reporter</i> . . . . .	JASPER JONES
MARVIN HEDRICK . . . . .	<i>Marshal</i> . . . . .	G. W. APPLE
JOHN MORGAN . . . . .	<i>Forensic Council Representative</i> . . . . .	HOYT WOOD

# The Zenith of 1933



THE A CAPELLA CHOIR  
ERNEST B. STIMSON, *Director*

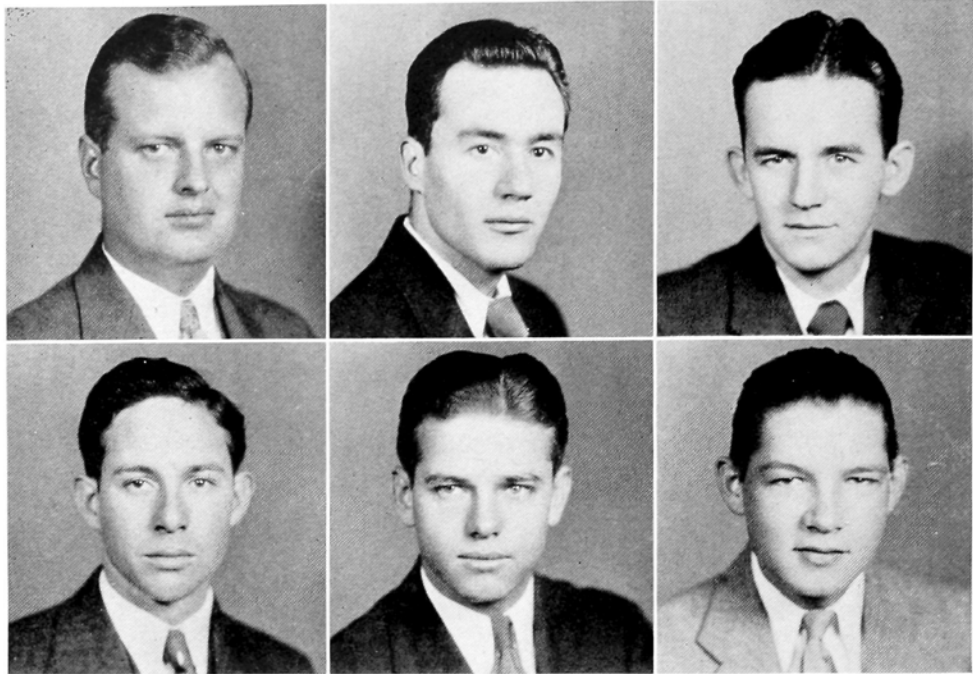
# The Zenith of 1933



COLLEGE ORCHESTRA  
MISS MARGARET SLOAN, *Director*



# The Zenith of 1933



## INTER-COLLEGIATE DEBATERS

JOHN MORGAN  
*Farmer, N. C.*

DWIGHT DAVIDSON  
*Gibsonville, N. C.*

JOHN WARD  
*Gibsonville, N. C.*

HOYT WOOD  
*Denton, N. C.*

CLARENCE T. MORRIS  
*Salisbury, Md.*

AUBERT SMITH  
*High Point, N. C.*

DR. P. S. KENNETT, *Coach*

# The Zenith of 1933



## PAN-HELLENIC COUNCIL

### OFFICERS

JOHN WARD . . . . . *President*  
 EDITH GUTHRIE . . . . . *Secretary*

### REPRESENTATIVES

<i>Iota Tau Kappa</i>	<i>Sigma Alpha Phi</i>	<i>Delta Alpha Epsilon</i>
JOHN WARD	EDITH GUTHRIE	TONY SIMEON
C. R. HINSHAW	MISS LOUISE JENNINGS	J. H. ALLRED
<i>Theta Phi</i>	<i>Epsilon Eta Phi</i>	<i>Alpha Theta Psi</i>
ELIZABETH GURLEY	CARL SMITH	AGNES INGRAM
MISS MARGARET SLOAN	J. H. MOURANE	MRS. ALICE WHITE

### REPRESENTATIVES OF FACULTY

DEAN MARY E. YOUNG                      DEAN H. L. SPESSARD

# The Zenith of 1933



## THETA PHI

*Flower:* White Rose

*Colors:* Apple and Olive Green

### SORORES IN FACULTATE

MISS MARGARET SLOAN  
MRS. N. P. YARBOROUGH



### SORORES IN COLLEGIO

FRANCES TAYLOR  
IDA JOHNSON  
DORIS KEENER  
ALMA ANDREWS  
ADYLENE MCCOLLUM  
ELIZABETH ROSS  
ELIZABETH GURLEY  
MARY REID IDOL

JEWEL HUGHES  
LILLIAN BUCKNER PHILLIPS  
WILLARD SHACKLEFORD  
VISTA DIXON  
HELEN HAYES  
ANN ROBBINS  
HULDAH DIXON  
ELIZABETH HANNER  
PAULINE WHITAKER  
VIRGINIA PICKENS GARLAND  
LILA AARON  
DOROTHY HOSKINS

### SORORES EX-COLLEGIO

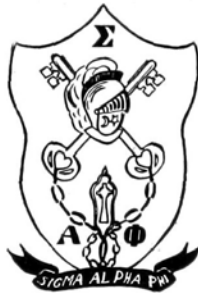
FANNY STAMEY  
MARGARET THOMPSON  
DOROTHY KIRKMAN  
EUGENIA WILLIAMS STRAUSE  
MARGARET PERRY ELLINGTON  
PAULINE HUNTER  
MARGARET GURLEY  
LILLIE JANE LONG  
LEONA WOOD  
NETTIE STUART  
HELEN OSBORNE  
KALOPIA ANTONAKOS

PAULINE ELKINS WHITESIDE  
SPENCER CUTCHIN PASCHALL  
RUTH WOODCOCK  
ELIZABETH BROWN  
ELOISE BEAM  
\*EVA ELLIS HART  
ELEANOR YOUNG  
SUE MORGAN  
RUBY VARNER WARD  
MRS. MADELENE B. STREET  
MISS DOROTHY ST. CLAIR  
MISS MILDRED LUCE

\*—Deceased.



## SIGMA ALPHA PHI



### HONORARI SORORES

MRS. P. E. LINDLEY  
MRS. B. H. HILL

### SORORES IN FACULTATE

MISS VERA IDOL  
MISS RUTH BELLAMY  
MISS LOUISE JENNINGS

### SORORES IN COLLEGIO

ELVA CARTNER  
IRMA PASCHALL  
MILDRED RUSSELL

JESSIE SMITH  
JOYCE JULIAN  
JANE LINGO

EDYTHE HUGHES  
EDITH GUTHRIE  
VIRGINIA MASSEY

FRANCES McCRARY  
CORNELIA HOWARD

### SORORES EX-COLLEGIO

ANZELETTE PREVOST  
NATHALEE LACKEY  
VERDIE MARSHBANKS  
OLIVE THOMAS  
GLADYS GUTHRIE  
MARY DOANE RANKIN  
ADELAIDE CROWELL  
RHUVATOR ENGLISH  
RAE SMITH  
RACHEL INGRAM

ELIZABETH N. SIDES  
JUANITA AMICK  
LAURA THOMPSON  
LELIA WAGNER COBLE  
MINNIE CAFFEY POPE  
GERTRUDE RULE  
ALTA ALLEN  
MINNIE HERMAN  
ANNIE LIVENGOOD  
MAE WOOLEN  
ELIZABETH CROWELL

EFFIE KECK  
BESSIE REDWINE  
WANDA PENNY  
HILDA AMICK  
EDNA NICHOLSON  
LUCY NUNERY  
GRACE KECK  
FANNY NET FREEMAN  
ALLENE FUQUAY  
ELIZABETH ROGERS

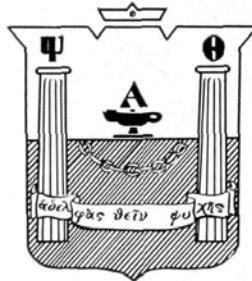
GRACE BARNETTE  
RUBY WARLICK  
GLADYS MORRIS  
EMMA LEE POOLE  
MARTHA CLONTZ  
HAZEL HICKS DAVIS  
PAULINE HICKS  
MILDRED MARLETTE  
MILDRED REDWINE  
MARY BETH WARLICK

# The Zenith of 1933



## ALPHA THETA PSI

*Colors:* Red and White  
*Flower:* Red Rose



*Motto:* To Seek The Noblest

### SORES IN COLLEGIO

INA McADAMS  
GLADYS CULLER  
MRS. M. L. PATRICK  
UNITY NASH

AGNES INGRAM	ERNESTINE VONCANNON
JEWELL WELCH	VERA SMITH
VIRL ANDREWS	HELEN RAPER
ORA MAE WELBORN	ANNIE LAURIE MOSS

IRENE CHADWICK  
MADELYN PACKER  
VIRGINIA FRITZ

### SORES EX-COLLEGIO

THELMA MOSS  
JUANITA ANDREWS  
GRACE KOONTZ  
REUCHA CHADWICK  
LUCILLE BROWN  
LOUISE COLLETT  
LESLIE JOHNSON

CHARLENE GRIMES	LUCILLE MORRISON
EVELYN SEWARD	MRS. C. C. HOOVER
HELEN BARKER	ANNIE LEE JARRELL
KATHLEEN TEAGUE	MARGARET DAVIS
MRS. CARL BRINKLEY	VIRGINIA STROUPE
IRENE SEWARD	MRS. JOHN OGBURN
HELEN SNYDER	NORINE HORNEY

VELNA TEAGUE  
ELIZABETH YOKLEY  
RUTH HENLEY  
ROSALIE ANDREWS  
NOVELLA McINTIRE  
BLANCHE GILLIAM  
CLAIRE DOUGLAS

### HONORARI SOORES

MRS. H. A. WHITE  
MRS. J. C. WHITESELL

MRS. R. M. ANDREWS  
MISS BONNIE ENOCH

MRS. S. O. PEEBLES  
MRS. E. L. DOUGLAS

MRS. F. A. THOMAS  
MRS. G. I. HUMPHREYS



# The Zenith of 1933



## EPSILON ETA PHI



### MEMBERS

ROBERT WILLIAMS	HOMER BIVENS
CARL SMITH	HOWARD PICKETT
SIDNEY SMITH	HARRY FINCH
HUGH MCCACHERN	BILL SNOTHERLY

### PLEDGE

HERBERT GARMON

### HONORARY MEMBERS

J. H. MOURANE	N. P. YARBOROUGH
---------------	------------------

# The Zenith of 1933



## DELTA ALPHA EPSILON



### MEMBERS

TONY SIMEON  
LARRY YOUNT  
NICHOLSON NEVILLE  
AUBERT SMITH

KENNETH SWART  
ZOLTAN RONYECZ  
JOE STONE  
HARVEY PRESSLEY

ERNEST HOWELL  
TOM ELLIS  
JAMES HIGHT  
PAUL VONCANNON

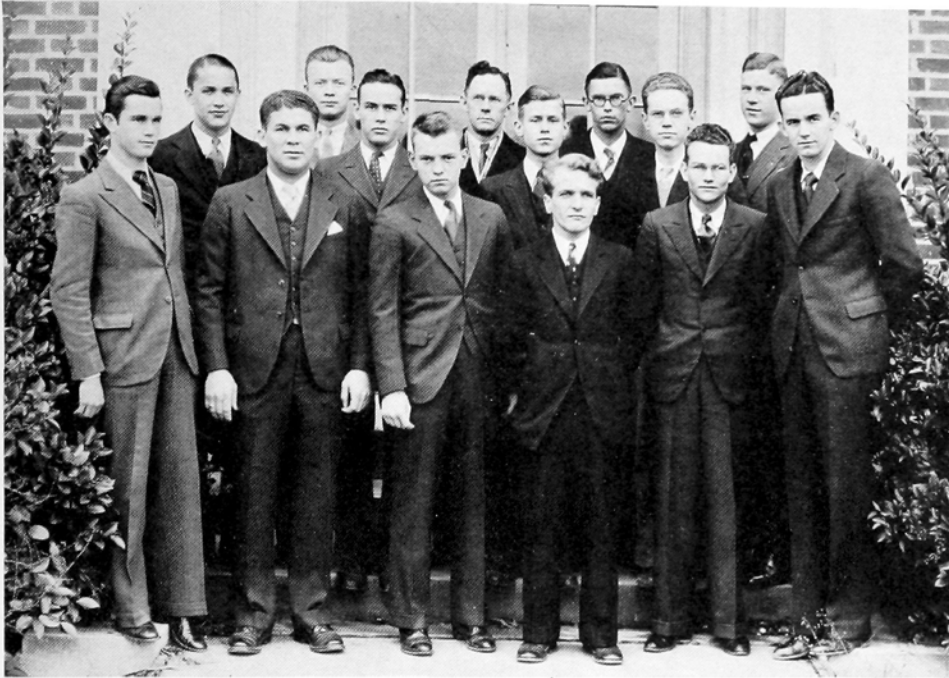
### HONORARY MEMBERS

P. R. BOWEN  
H. L. SPESSARD  
J. H. ALLRED

C. C. ROBBINS  
JOHN WHITESELL  
S. S. COE

P. B. DAVIS

# The Zenith of 1933



## IOTA TAU KAPPA



### MEMBERS

JOE CRAVER  
DWIGHT DAVIDSON  
GEORGE PUSEY  
JOHN WARD  
C. L. GRAY, JR.

ARTHUR DICKENS  
KENNETH ROYALS  
R. H. SMITH  
BURT ASBURY  
GEORGE CRICKMORE

FRANK SUDIA  
JOHN TAYLOR  
CURTISS HUMPHREYS  
SAM TROUTMAN  
BEN JAMES

### HONORARY MEMBERS

C. R. HINSHAW  
P. E. LINDLEY

P. S. KENNETT  
O. A. KIRKMAN

H. B. HIATT

### PLEDGE

WYATT WALL

# The Zenith of 1933

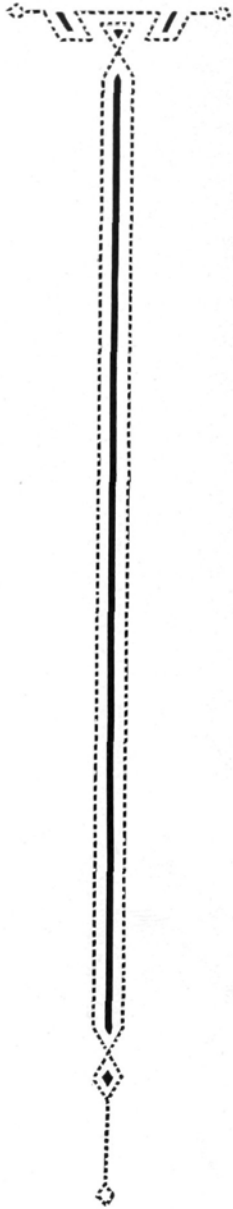


MODERN PRISCILLA CLUB



ART CLUB

# The Zenith of 1933

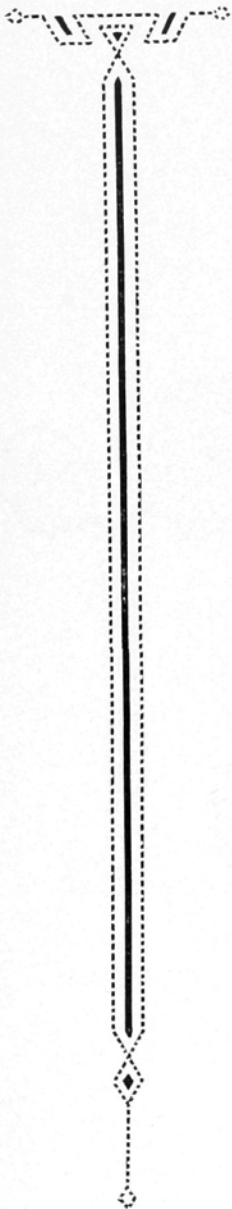


SCRIBLERUS CLUB



DRAMATIC CLUB

# The Zenith of 1933



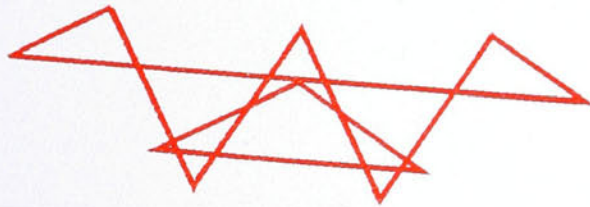
MINISTERIAL ASSOCIATION



Y. M. C. A. AND Y. W. C. A. CABINETS



FEATURES







# The Zenith of 1933

## HIGH POINT COLLEGE

GIDEON IRELAND HUMPHREYS, A.M., D.D., *President*

*"In the Heart of the Piedmont"*

MODERN FIRE-PROOF BUILDINGS  
NON-SECTARIAN

CO-EDUCATIONAL

*Rated Standard "A" Grade by State Board of Education*

Courses in Education, Language, History, Commerce, Home Economics, Science,  
Religious Education, Music—leading to degrees of A.B. or B.S.

Low Rates Put College Training in Reach of the Youth With Limited Means

*"A Growing College in a Growing City"*

For Catalogue Apply to

**PRESIDENT OR REGISTRAR**

HIGH POINT COLLEGE

HIGH POINT, N. C.

COMPLIMENTS

OF

**CAROLINA CASKET CO.**

**Sporting Goods and Every-  
thing in Hardware**

*We Appreciate Your Patronage*

**HIGH  
POINT HARDWARE**

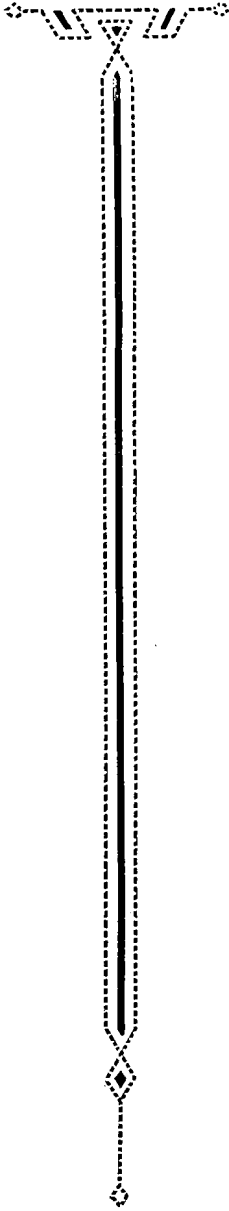
127 South Main Street

THE 1933 ZENITH  
Is Bound in a  
**KINGSCRAFT COVER**



Designed and Produced By the  
**KINGSPORT PRESS, INC.**  
Kingsport, Tennessee

# The Zenith of 1933



DON'T FORGET TO CALL 2058 FOR  
**CLOVER BRAND ICE CREAM**  
AND  
PASTEURIZED DAIRY PRODUCTS  
*"None Better"*  
HIGH POINT CREAMERY COMPANY

LARGE OR SMALL  
SAVINGS  
*Accounts Appreciated*  
**Globe**  
**Industrial Bank**  
5% INTEREST

THIS SPACE GIVEN  
BY  
J. T. ROUNDTREE  
AND  
D. M. DAVIDSON  
Gibsonville, N. C.

COMPLIMENTS  
OF  
NIKANTHAN THALEAN  
LITERARY SOCIETIES

## The Zenith of 1933

### Utility Service and the Community

More than any other one factor, the quality of its utility services determines the desirability and attractiveness of a community for business or as a place in which to live.

In industry and in the home the application of electricity to industrial and household operations is multiplying the effectiveness of the labor of the worker and relieving the housekeepers of drudgery and fatigue. And while it increases the efficiency of the individual, it raises the quality of the work accomplished as well.

We invite attention to the standard of utility services in the cities in which we supply these essentials to modern living and modern business.

### SOUTHERN PUBLIC UTILITIES COMPANY

*Operating 1500 Department  
Stores*

•  
*J. C. Penney Co.*

Dry Cleaners and Dyers  
"WE KLEAN KLOTHES KLEAN"

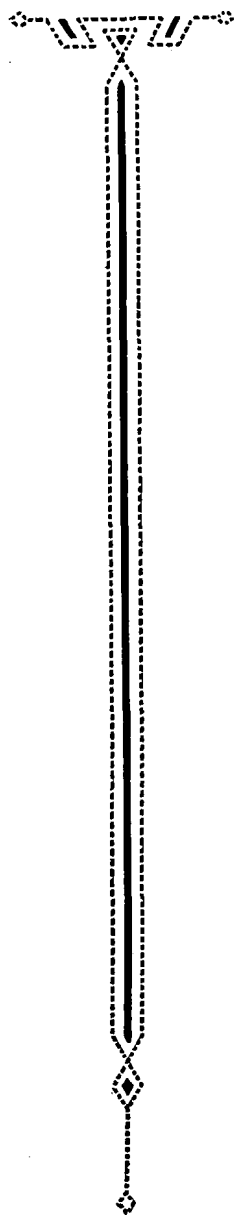
HIGH POINT  
STEAM LAUNDRY

PHONE 3325

*The High Point, Thomasville & Denton  
Railroad Company*

Is an outstanding example of accomplishment as the result of co-operation and steady hard work. Large or small, any community thrives only when there is co-operation and a general spirit of service.

# The Zenith of 1933



## NEW SERVICE LAUNDRY

205 Centennial Avenue

Phone 3364

HIGH POINT, N. C.

Laundrying  
Altering

Pressing

Cleaning  
Dyeing

"BEST WORK AND QUICK SERVICE"

FOR

*Quality Printing*

SEE

**THE CREATIVE  
PRINT SHOP**



106 COLLEGE STREET

Telephone 2645

Lay Your Foundation For Future  
Success By Buying

**PERFECT PROTECTION**

WHICH PAYS **EVERY WAY**  
**EVERY DAY**

And Covers All Insurance Needs

**N. L. Garner, Agency**

Occidental Life Insurance Co.

809 Commercial Bank Building

For Quality Shoe Repairing

Call 4313

**W. C. BROWN  
SHOE SHOP**

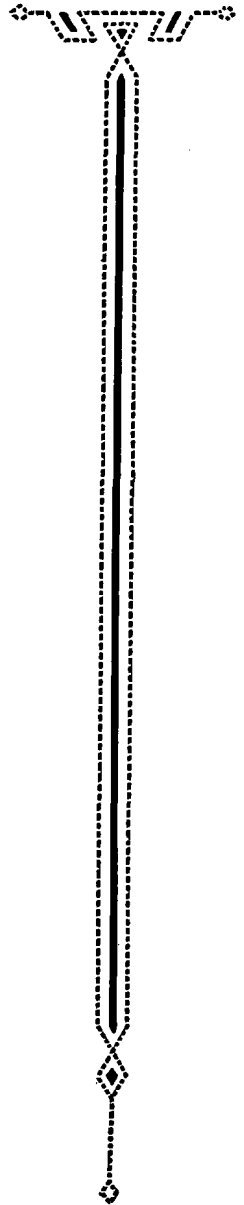
*"Work Called For and Delivered"*

128 N. Wrenn Street

*Compliments of*

**J. W. SECHREST AND SON**

# The Zenith of 1933



COMPLIMENTS  
OF  
G. Edwin Hedrick  
✦  
Class of 1930

Mann Drug Stores

*Drugs With a  
Reputation*

Elwood Hotel Building  
640 North Main Street  
2164—PHONES—4312

THIS SPACE DONATED BY  
THE  
*Artemesian and Akrothinian  
Literary Societies*  
OF  
HIGH POINT COLLEGE

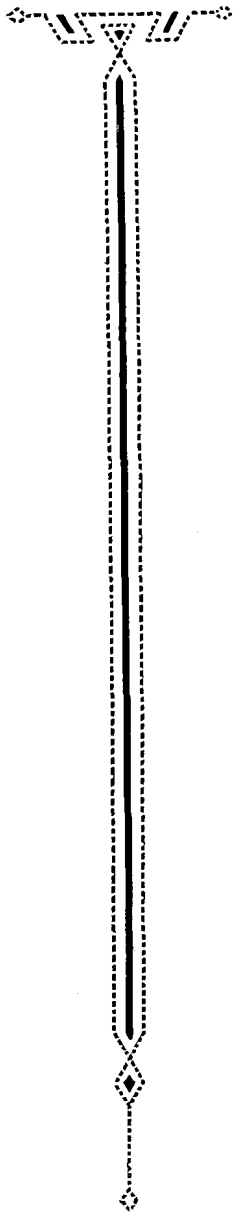
Dr. Nat Walker  
*Optometrist*

Over Hart Drug Company  
Next to Post Office  
HIGH POINT, N. C.

*Compliments*  
1931 Zenith Staff

HART CAMPBELL  
*Editor*  
CLYDE PUGH  
*Business Manager*

# The Zenith of 1933



COMPLIMENTS  
OF  
Gibson Ice Cream  
Company  
Phone 2401 100, 781 N. Main St.

COMPLIMENTS  
OF  
*Coca-Cola*  
in Bottles  
GREENSBORO  
Coca-Cola Bottling Co.

*Compliments of*  
Gibsonville Hosiery  
Mills Company  
GIBSONVILLE, N. C.  
*to the*  
Class of 1933

Lyles  
Chevrolet Company  
AND  
Rev. C. G. Isley  
Class of 1932

AU REVOIR, BUT NOT GOOD-BYE!  
May We Continue To Serve You  
in the Future  
◆  
SARTIN DRY CLEANING CO.  
AND  
DUTCH LAUNDRY, Inc.  
*Friendly Cleaners and Launderers*

The Zenith of 1933

THE PHOTOGRAPHS IN  
THE ZENITH

WERE MADE BY

*Dunbar & Daniel*

*Incorporated*

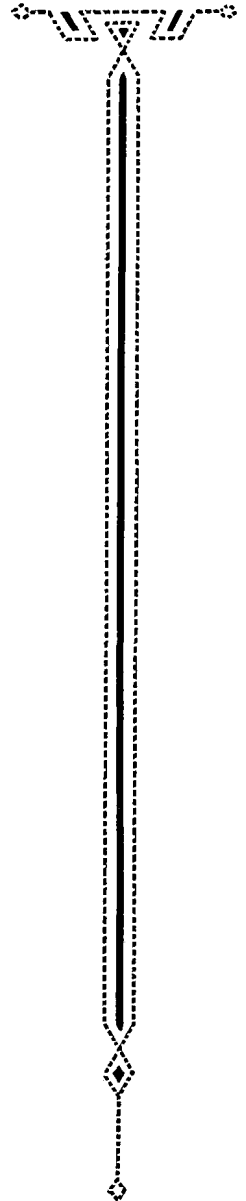
RALEIGH, NORTH CAROLINA



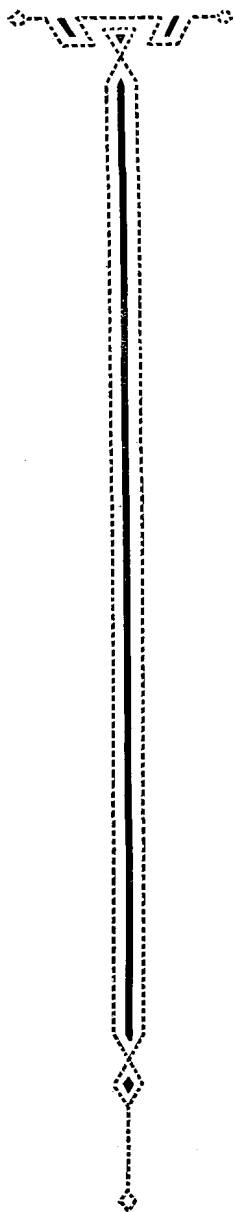
*The Largest College Annual  
Photographers in the South*



FINE PORTRAITS  
COMMERCIAL PHOTOGRAPHY  
FINE KODAK FINISHING



The Zenith of 1933



• THE •  
WORLD'S LARGEST PUBLISHERS  
OF COLLEGE ANNUALS

•  
BENSON PRINTING COMPANY  
COLLEGE ANNUAL HEADQUARTERS

Highest Quality Workmanship

»

Superior Extensive Service

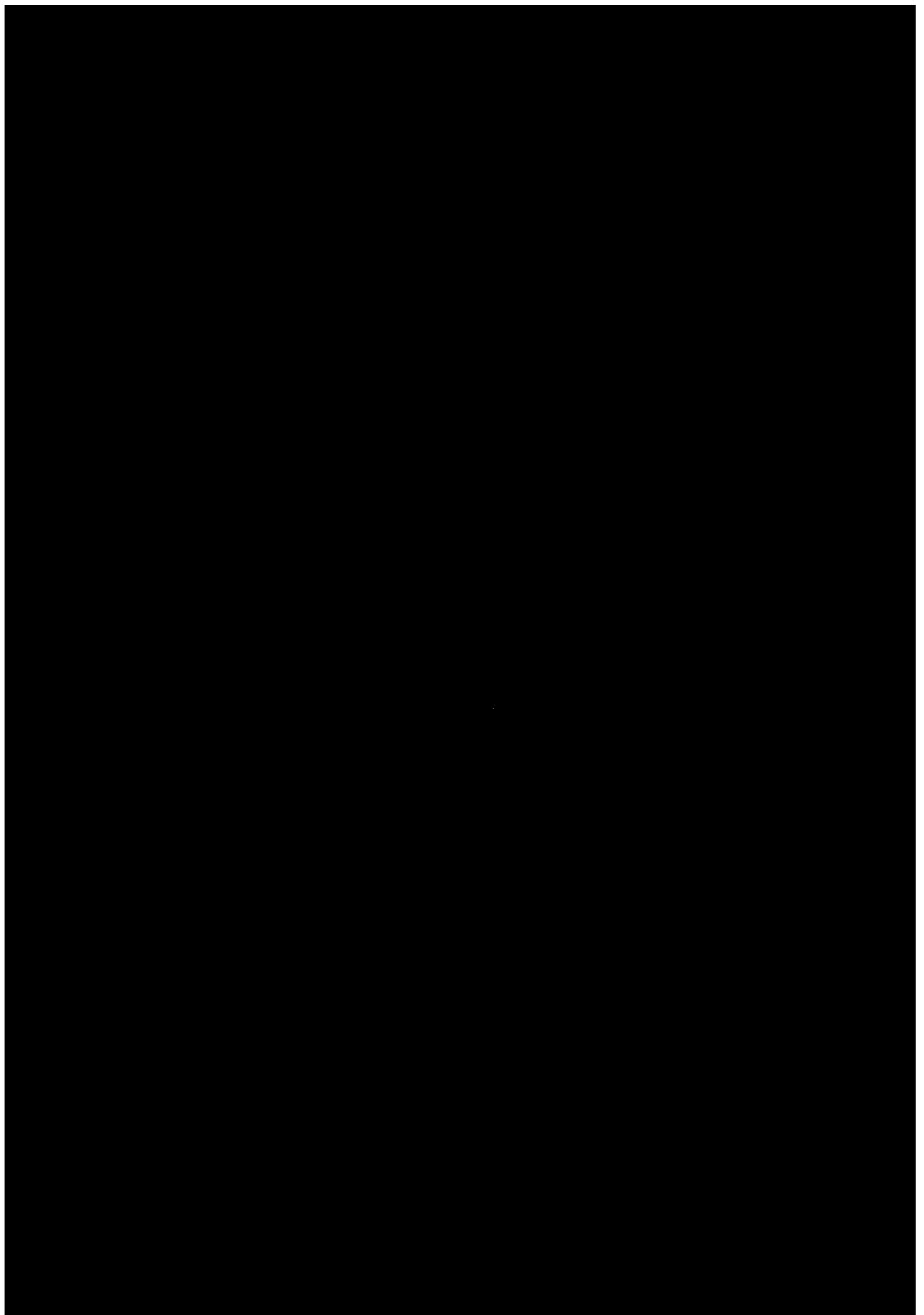
*We have* REASON *to be proud*

For four consecutive years we have made the printing plates for the Zenith. Only the best of service and fair dealing merit continued patronage. ♦ We are ready and anxious to serve you equally as well.

PIEDMONT *Engraving Co.*

WINSTON - SALEM ~ HIGH POINT





...the ...

...the ...

...the ...

...the ...

...the ...

...the ...

...the ...

...the ...

...the ...

...the ...

...the ...

...the ...

...the ...

...the ...

...the ...

...the ...

...the ...

