

The book cover is a deep green with a leather-like texture. A white lightning bolt logo is positioned in the upper right, with the word 'ZENITH' written in a bold, white, sans-serif font across it. To the left, a white line drawing of a radio tower extends from the bottom towards the top. At the top of the tower is a circular emblem containing the lightning bolt logo. The year '1937' is embossed in the lower right, and the author's name 'EDGAR SNIDER' is printed in white at the very bottom right.

**ZENITH**

1937

**EDGAR SNIDER**





• • • **THE**



**1937 ZENITH**









EX LIBRIS





CHARLES E. RIDGE • • EDITOR-IN-CHIEF  
WILSON ROGERS • • BUSINESS MANAGER



1937 ZENITH



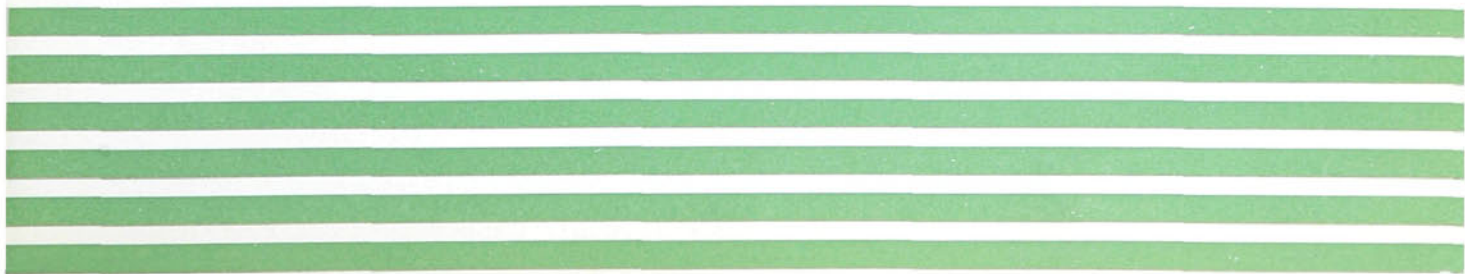
PUBLISHED ANNUALLY

BY THE STUDENTS OF

HIGH POINT COLLEGE

HIGH POINT . . .

NORTH CAROLINA







D R. G. I. H U M P H R E Y S



# DEDICATION

For his strength of character and power of leadership; for his earnest work to promote the advancement of education; for his constant mindfulness of the best interests of the student body; for his inspiring vision and unceasing efforts to create a greater High Point College, we, the staff of the 1937 ZENITH, respectfully dedicate this, the eleventh volume, to our president,

• DR. GIDEON •  
IRELAND HUMPHREYS





# FORWARD

the beating of drums . . . the  
tolling of bells . . . the strident  
tones of the town crier . . . the  
clatter of hoofs along the post road  
—these, for two thousand years  
were the accoutrements of com-  
munication. And then in the Nine-  
teenth Century came revolutionary  
changes in the transfer of news  
and thought from man to man in  
every corner of the earth; the tele-  
graph, the telephone and, in the  
closing decade—RADIO.

# CONTENTS

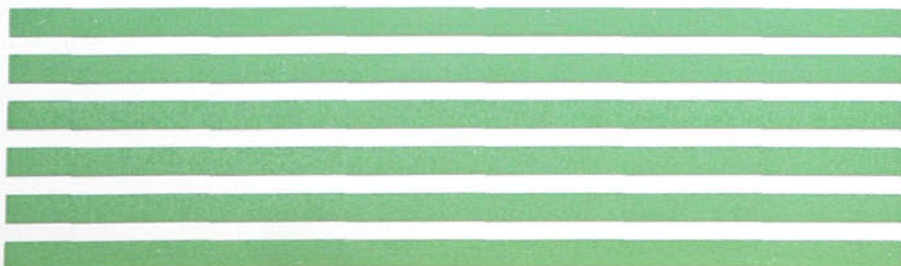
BOOK ONE • THE COLLEGE

BOOK TWO • THE CLASSES

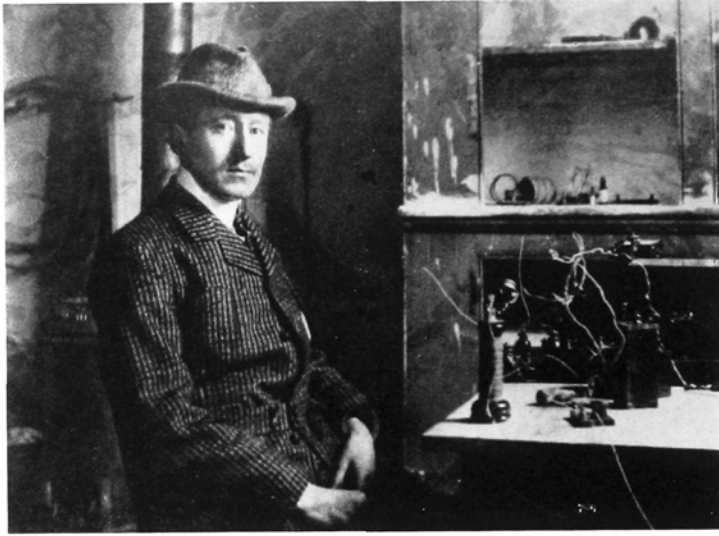
BOOK THREE • ATHLETICS

BOOK FOUR • ORGANIZATIONS

BOOK FIVE • FEATURES







MARCONI AND EQUIPMENT WITH WHICH SIGNALS WERE  
FIRST RECEIVED ACROSS THE ATLANTIC IN 1901



# THE COLLEGE ●





GIDEON IRELAND HUMPHREYS, A.M., D.D.  
PRESIDENT

## BOARD OF TRUSTEES

### OFFICERS

H. A. MILLIS . . . . . *President*  
N. M. HARRISON . . . . . *Secretary-Treasurer*

J. E. PRITCHARD	J. NORMAN WILLS
R. M. COX	F. LOGAN PORTER
DR. J. H. CUTCHIN	J. C. AUMAN
W. F. HUNSUCKER	C. F. FINCH
J. D. WILLIAMS	G. H. KEARNS
J. M. MILLIKAN	C. C. ROBBINS
J. S. PICKETT	L. F. ROSS
S. W. TAYLOR	A. M. RANKIN
MRS. M. J. WRENN	DR. W. A. LAMBETH
B. K. MILLOWAY	E. C. MCCRARY



MISS LOUISE ADAMS, A.M.

*Instructor in Mathematics*

A.B., High Point College, 1929; A.M., University of North Carolina, 1930.

High Point College, 1933—



J. HOBART ALLRED, A.M.

*Professor of Modern Languages*A.B., University of North Carolina, 1922; A.M., *ibid.*, 1929.

High Point College, 1924—

MISS LOLA BARRY, B.S.

*Professor of Home Economics*

B.S., Tennessee State Teachers College, 1930; M.S., University of Tennessee, 1934.

High Point College, 1936—



PAUL R. BOWEN, Ph.D.

*Professor of Biology*

A.B., DePauw University, 1925; M.S., Yale University, 1929; Ph.D., Yale University, 1931.

High Point College, 1932—

## T H E F A C U L T Y



MISS SIDNEY BRAME, A.M.

*Director Physical Education for Women*

A.B., Millsaps College, 1930; A.M., Peabody College, 1932.

High Point College, 1934—

MISS ELDA CLARK, A.B.

*Assistant Professor of Commercial Department*

Secretary to President, 1935—



EDMUND O. CUMMINGS, Ph.D.

*Professor of Chemistry*

B.S., University of N. C., 1919; Ph.D., Massachusetts Institute of Technology, 1923.

High Point College, 1928—

R. H. GUNN, A.B.

*Instructor in Department of Business*

A.B., Elon College, 1924.

High Point College, 1929—





J. RALTO FARLOW, B.S.  
*Instructor in Department of Business*  
 B.S., University North Carolina, 1934.  
 High Point College, 1936—

W. H. FORD, A.M.  
*Instructor in Department of Business*  
 A.B., University of S. C., 1923; A.M., *ibid.*,  
 1928.  
 High Point College, 1934—



NATHANIEL M. HARRISON, B.D.  
*Promotional Secretary*  
 A.B., Western Maryland College, 1916; B.D.,  
 Westminster Theological Seminary, 1919.  
 High Point College, 1930—

CLIFFORD R. HINSHAW, A.M., Litt.D.  
*Professor of Education and Psychology*  
 A.B., Guilford College, 1916; A.M., University of  
 N.C., 1924; A.M., Columbia University, 1927;  
 Litt.D., Western Maryland College, 1932.  
 High Point College, 1927—

# THE FACULTY

MISS VERA IDOL, A.M.  
*Professor of English*  
 A.B., Greensboro College, 1921; B.S., Columbia  
 University, 1923; A.M., *ibid.*, 1927.  
 High Point College, 1924—



PAUL S. KENNETT, B.D., LL.D.  
*Professor of History*  
 A.B., Guilford College, 1913; B.D., Westminster  
 Theological Seminary, 1917; LL.D., Adrian College,  
 1928.  
 High Point College, 1924—

PERCY E. LINDLEY, A.M., Litt.D.  
*Dean of College and Professor of Religious Education*  
 A.B., Elon College, 1920; A.M., Vanderbilt Uni-  
 versity, 1921; Litt.D., Western Maryland College,  
 1928.  
 High Point College, 1924—



MRS. MABEL T. MILLIKAN, A.B.  
*Social Director, Woman's Hall*  
 A.B., Asheville Normal, 1902.  
 High Point College, 1936—



J. HARLEY MOURANE, M.S.  
*Professor of Chemistry and Physics*  
B.S., University of N. C., 1932; M.S., *ibid.*,  
1924.  
High Point College, 1924—



CULLEN B. OWENS, A.B.  
*Professor of Speech and Dramatics*  
A.B., Berea, 1933; A.M., Northwestern, 1935;  
High Point College, 1935—

DONALD J. RULFS, A.M.  
*Associate Professor of English*  
A.B., University of North Carolina, 1932; A.M.,  
Harvard University, 1933.  
High Point College, 1934—



MISS JANET C. RUSSELL, B.S.  
*Professor of Music*  
Oberlin Conservatory of Music, 1932; Piano study  
with Egon Petri and Tobias Matthay, London,  
1935-36.  
High Point College, 1936—

## T H E F A C U L T Y



MRS. C. L. WHITAKER  
*Dietitian*

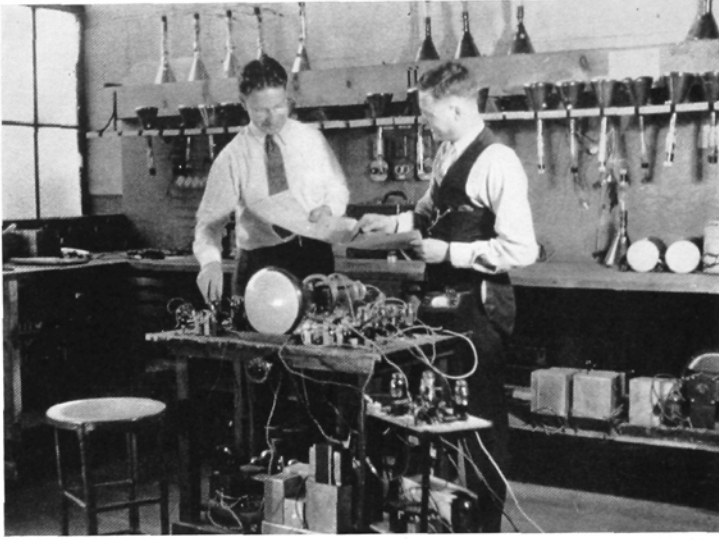
MRS. ALICE PAIGE WHITE, A.M.  
*Professor of Greek and Latin*  
A.B., Boston University, 1893; A.M., Teachers  
College, Columbia University, 1907.  
High Point College, 1924—



NATHANIEL P. YARBOROUGH, A.M.  
*Associate Professor of Modern Languages*  
A.B., Wofford College, 1923; A.M., University of  
South Carolina, 1928; Diploma from Institute of  
Phonetics, University of Paris, 1930.  
High Point College, 1925—

C. VIRGIL YOW, A.B.  
*Coach and Director Physical Training for Men*  
A.B., High Point College, 1930.  
High Point College, 1932—





A CORNER OF A TELEVISION LABORATORY



# THE CLASSES ●





S  
E  
N  
I  
O  
R  
C  
L  
A  
S  
S



PAUL SCOTT OWEN  
PINNACLE, N. C.

*Degree:* B.S.

I T K

*Lighted Lamp*, 3, 4; *Dormitory Student Council*, 2, 3, 4; *Akrothinian Literary Society*, 1, 2, 3, 4, *Secretary* 2, *President* 3; *Student Absence Committee*, 3; *ZENITH*, 2, 3; *Class President*, 4; *Christian Endeavor*, 1, 2, 3, 4, *Vice-President* 3, *Treasurer* 4; *Marshal Chief*, 3; *President Commerce Club*, 4.



**Officers**

PAUL SCOTT OWEN  
PRESIDENT

CHARLES EVANS RIDGE  
VICE-PRESIDENT

INZA MARIE HILL  
SECRETARY

SHELDON BRINKLEY DAWSON  
TREASURER



GEORGE WILLIARD ARMFIELD  
HIGH POINT, N. C.

*Degree:* A.B.

University of North Carolina, 2.

MARY MARGARET BATES

BROWN SUMMITT, N. C.

*Degree:* B.S.

Christian Endeavor, 1, 2, 3, 4, President, 3, 4;  
Modern Priscilla, 1, 2, 3, 4, Vice-President, 3,  
President, 4; Nikanthan Literary Society, 1,  
3, 4; Y. W. C. A., 1, 2, 3, Vice-President, 3;  
Art Club, 1, 3; *Hi-Po*, 2, 3, 4; Student Ab-  
sence Committee, 3; Marshal, 3; Student  
Council, 4; W. A. A., 4.

JAMES ALLEN AUSTIN  
HIGH POINT, N. C.

*Degree:* B.S.

Ε Η Φ

Student Council Constitution Committee, 1;  
Thalean Literary Society, 1, 2, 3, 4, Secretary  
2, Forensic Council Representative, 3; Busi-  
ness Manager Y. M. C. A. Handbook, 2;  
Lighted Lamp Constitution Committee, 2; *Hi-  
Po*, 2, 3, 4, Treasurer, 2, Business Manager,  
3, 4; Student Council, 3, 4, Vice-President, 3,  
President, 4; Athletic Council, 3, 4; Executive  
Chairman Senior Class.

DOROTHY DAVIS BELL

SOUTHPORT, N. C.

*Degree:* A.B.

Nikanthan Literary Society, 3, 4, Inter-Society  
Debator 3; Lighted Lamp, 4; *Hi-Po*, 3, 4,  
Co-Editor, 4; Student Council, 4; Forensic  
Council, 4.

S E N I O R S







ARNOLD LEE BOLEN

HIGH POINT, N. C.

*Degree: A.B.*

Band, 3, 4; A Capella Choir, 1, 2; Orchestra, 1, 2.

WILLIAM ALBERT BOOTH

OXFORD, N. C.

*Degree: A.B.*

Akrothian Literary Society, 1; Soccer, 1; Basketball, 1, 2, 3, 4; Baseball, 3, 4; Block "H" Club, 1, 2, 3, 4.

RAYMOND ODELL BROWN

HIGH POINT, N. C.

*Degree: A.B.*

Ministerial Association, 1, 2, 3, 4, Vice-President, 3; Thalean Literary Society, 4.

JULIA COE

HIGH POINT, N. C.

*Degree: B.S.*

Θ Φ

Artemesian Literary Society, 3, 4, Treasurer, 3, President, 4; Class President, 3; *Hi-Po*, 1, 2, 3, 4; A Capella Choir, 2, 3, 4, Vice-President, 4; Pan-Hellenic Council, 4, Secretary, 4; Commerce Club, 4.



S E N I O R S



SHELDON BRINKLEY DAWSON  
SALISBURY, MARYLAND

*Degree: A.B.*

I T K

A Capella Choir, 1, 2, 3, 4, President, 4; Christian Endeavor, 1, 2, 3, 4, Treasurer, 2, Monitor, 4; Akrothinian Literary Society, 1, 2, 3, 4, Secretary, 3, Vice-President, 4; *Hi-Po*, 2, 3, 4; Dormitory Student Council, 4, Secretary, 4; Band, 3, 4.

MARGARET DIXON  
HIGH POINT, N. C.

*Degree: B.S.*

Θ Φ

Artemesian Literary Society, 1, 2, 3, 4, Critic, 4; W. A. A., 2, 3, 4, Treasurer, 3, Vice-President, 4; W. A. Council, 2, 3, 4; Best All-Around Athlete, 3.

CLIFFORD DELL  
GREENSBORO, N. C.

*Degree: A.B.*

University of North Carolina, 1; Asheville Normal, 2; Lenoir-Rhyne, 3.

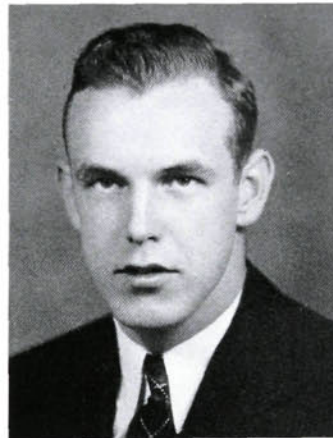
FLETCHER ISHMAEL DORSETT  
THOMASVILLE, N. C.

*Degree: A.B.*

Δ Α Ε

Baseball, 1, 2, 3, 4; Thalean Literary Society, 1, 2, 3, 4.

S  
E  
N  
I  
O  
R  
S







PEARL VIRGINIA EICHELBERGER  
 PORTSMOUTH, OHIO  
*Degree: A.B.*

Moody Bible Institute, '26-'28; Columbia Bible College, University of South Carolina, '35-'36, Nikanthan Literary Society, 4.

VADALIA MARRIAGE FARLOW  
 SOPHIA, N. C.  
*Degree: A.B.*

Nikanthan Literary Society, 2, 3, 4; Modern Priscilla Club, 2, 3, 4; W. A. A., 2, 3; Art Club, 3; Chemistry Club, 2.

JACK FITZGERALD  
 LINWOOD, N. C.  
*Degree: B.S.*

Rutherford Junior College, 1; Guilford College, 2.

J. EZELL GARLINGTON  
 POLLOCK, LA.  
*Degree: A.B.*

Thalean Literary Society, 1, 2, 3, 4, Treasurer, 2, 3, 4; Ministerial Association, 1, 2, 3, 4, President, 4; Dormitory Student Council, 2, Vice-President, 2; Christian Endeavor Society, 1, 2, 3; Y. M. C. A., 1, 2, 3; Debating Team, 2; Delegate to S. V. M., Indianapolis, 2.



S E N I O R S



DEMETROIS ATHANACIOS GIANOULIS  
HIGH POINT, N. C.  
*Degree:* B.S.

FRANCES A. GUETH  
HIGH POINT, N. C.  
*Degree:* B.S.  
Θ Φ

Artemesian Literary Society, 1, 2, 3, 4; Marshal, 3; Commerce Club, 4.

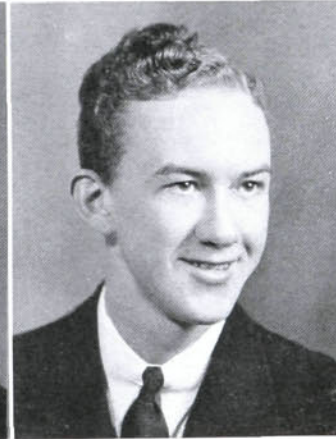
SARA HARRIS  
SUMMERFIELD, N. C.  
*Degree:* A.B.

ALTON HARTMAN  
ADVANCE, N. C.  
*Degree:* B.S.  
Ε Π Φ

Artemesian Literary Society, 1, 2, 3, 4, Vice-President, 3; W. A. A., 4.

Thalean Literary Society, 1, 2, 3, 4, Critic, 4; Tumbling Team, 1, 2; Student Council, 1; *Hi-Po*, 1, 2, 3, 4, Sports Editor, 4; Basketball Manager, 4; Marshal, 3; Lighted Lamp, 4; President Dormitory Council, 4; Student Absence Committee, 3; President Pan-Hellenic Council, 4.

S  
E  
N  
I  
O  
R  
S







JAMES SILVESTER HIGGINS  
GUILFORD COLLEGE, N. C.

*Degree: A.B.*

Guilford College, 1, 2, 3; Duke University Summer School, 3; Vice-President North Carolina Student's Ministerial Association, 2; Thalean Literary Society, 4; Ministerial Association, 4.

ANNIE FAY HOLT  
GRAHAM, N. C.

*Degree: A.B.*

Nikanthan Literary Society, 1, 2, 3, 4, President, 4; W. A. A., 2, 3, 4, Secretary, 2; Christian Endeavor Society, 1, 2, 3, 4; Y. W. C. A., 1, 2, 3, 4; A Capella Choir, 1, 2; Chief Cheer Leader, 4.

INZA MARIE HILL  
DENTON, N. C.

*Degree: A.B.*

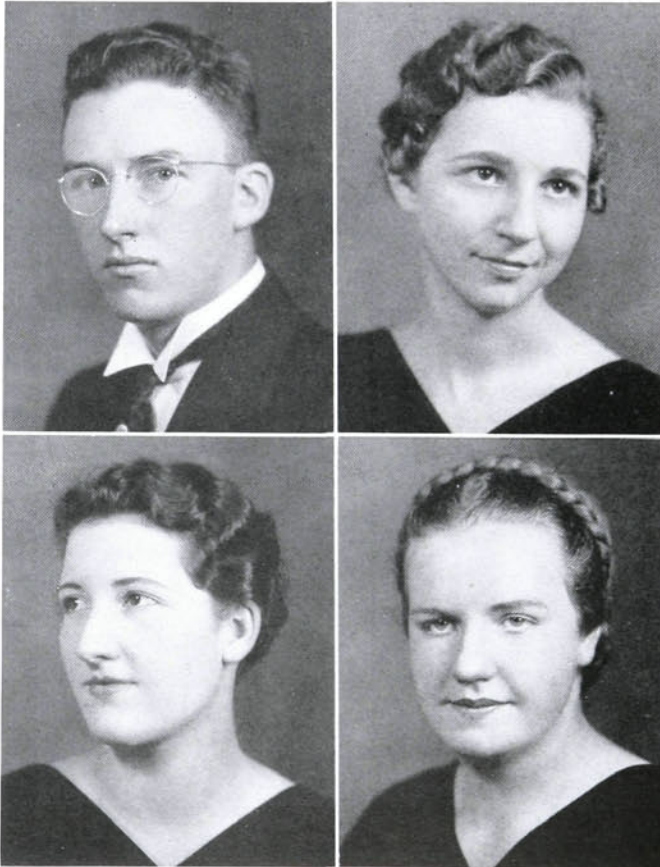
Nikanthan Literary Society, 1, 2, 3, 4, Treasurer, 2, Vice-President, 3; Christian Endeavor Society, 1, 2, 3, 4, Secretary, 2, Treasurer, 3; *Hi-Po*, 1, 2, 3, 4; Art Club, 1, 2; W. A. A., 2, 3, 4; Dormitory Student Council, 1, 2, 3, 4, Treasurer 2, President, 4; Commerce Club, 4; Class Secretary, 4; Y. W. C. A., 1, 2, 3; Marshal, 3; Student Absence Committee, 3.

MARGUERITE ELAINE JENKINS  
FROSTBURG, MD.

*Degree: A.B.*

Θ Φ

Hood College, 1, 2; A Capella Choir, 3, 4; Artemesian Literary Society, 3, 4, Treasurer, 4; W. A. A., 3, 4; Woman's Dormitory Council, 3, 4; Cheer Leader, 4.



S E N I O R S



MARY ELISE KILPATRICK  
HAYNESVILLE, LA.

*Degree: A.B.*

Louisiana State Normal College, 1; Westminster College Texas, 2; Nikanthan Literary Society, 3, 4; Christian Endeavor Society, 3, 4; Ministerial Association, 3, 4; W. A. A., 3, 4; Treasurer, 4.

W. C. KOONTZ, JR.  
HIGH POINT, N. C.

*Degree: B.S.*

Baseball, 1, 2, 3, 4; Soccer, 3, 4; Basketball, 1, 2, 3, 4; Block "H" Club, 1, 2, 3, 4; Commerce Club, 4.

GLADYS RUTH MAXWELL  
HENDERSONVILLE, N. C.

*Degree: B.S.*

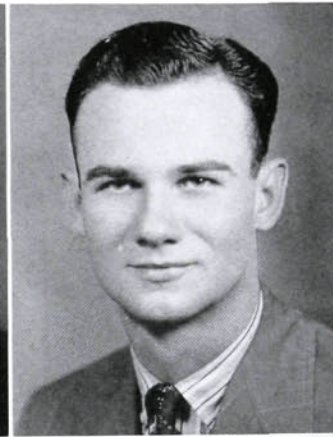
Σ Α Φ

Artemesian Literary Society, 1, 2, 3; Modern Priscilla Club, 1, 2, 3, 4; Art Club, 1, 2; Dormitory Student Government, 3; Pan-Hellenic Council, 4.

H. O. LANNING  
LEXINGTON, N. C.

*Degree: A.B.*

S E N I O R S







SAMUEL WORTH MYERS

THOMASVILLE, N. C.

*Degree:* A.B.

*Hi-Po.* 2, 3, 4; Thalean Literary Society, 1, 2, 3, 4, Secretary, 2, Marshal, 3, President, 4; Ministerial Association, 1, 2, 3, 4, Chaplain, 3, 4; Dormitory Student Council, 3; Y. M. C. A., 1, 2, 3, 4, Vice-President, 4.

PAULINE RAWLS PARKER

RICHMOND, VA.

*Degree:* A.B.

W. A. A., 2, 3, 4, President, 4; W. A. C., 2, 3, 4; A Capella Choir, 1, 2, 3, 4; Y. W. C. A., 1, 2, 3; Little Theatre, 3; Christian Endeavor Society, 1, 2, 3, 4; Nikanthan Literary Society, 1, 2, 3, 4.

JAMES MERWYN PARSONS

LANDENBURG, PA.

*Degree:* A.B.

Appalachian State Teachers College, 1, 2; Akrothian Literary Society, 3.

JOSEPH R. PAYNE

HIGH POINT, N. C.

*Degree:* B.S.

Orchestra, 1, 2; A Capella Choir, 2, 3, 4; Band, 3, 4, President, 4.



S  
E  
N  
I  
O  
R  
S

LENA ELIZABETH PIRTLE  
MONTGOMERY, ALA.

*Degree: A.B.*

Σ Λ Φ

A Capella Choir, 1, 2, 3; Modern Priscilla Club, 1, 2, 3, 4, Vice-President, 4, Critic, 3; Christian Endeavor Society, 1, 2, 3, 4; Art Club, 1, 2, 3; Y. W. C. A., 1, 2, 3, President, 3; Artemesian Literary Society, 1, 2, 3, 4; Executive Committee Senior Class.

DELOIS ESTELLE PRESSLEY  
HIGH POINT, N. C.

*Degree: B.S.*

A Capella Choir, 2, 3, 4; Nikanthen Literary Society, 2, 3, 4.

HARVEY HANSEL PRESSLEY  
HIGH POINT, N. C.

*Degree: A.B.*

Δ Α Ε

Tennis Team, 2, 3, 4; Akrothinian Literary Society, 1, 2, 3, 4, Secretary, 2.

CHARLES EVANS RIDGE  
LEXINGTON, N. C.

*Degree: B.S.*

A Capella Choir, 1, 2, 3; Thalean Literary Society, 1, 2, 3, 4, Secretary 3, Vice-President, 4; Circulation Manager, *Hi-Po*, 2; Christian Endeavor Society, 1, 2, 3, 4; Class Vice-President, 3; Y. M. C. A., 4; Commerce Club, 4, Treasurer, 4; Class Vice-President, 4; THE ZENITH, 2, Editor-in-Chief, 4; Delegate to S. V. M., Indianapolis, 3.

S  
E  
N  
I  
O  
R  
S







JOSEPH WILSON ROGERS  
BURLINGTON, N. C.

*Degree:* B.S.

I T K

A Capella Choir, 2, 3, 4; Orchestra, 1, 2, 3; Akrothianian Literary Society, 1, 2, 3; Band, 3, 4; Basketball, 1, 2, 3; Tennis Team, 1, 2, 3, 4, Captain-Manager, 3; Y. M. C. A., 4; Block "H" Club, 1, 2, 3, 4; Commerce Club, 4, Vice-President, 4; Christian Endeavor Society, 1, 2, 3, 4; ZENITH, 3, 4; Advertising Manager, 3, Business Manager, 4.

LOUIS VAN SMITH  
HIGH POINT, N. C.

*Degree:* A.B.

Δ A E

Guilford College, 1; Soccer, 3, 4; Block "H" Club, 3, 4; Y. M. C. A., 4.

JOHNNIE RUDISILL  
LINCOLNTON, N. C.

*Degree:* A.B.

I T K

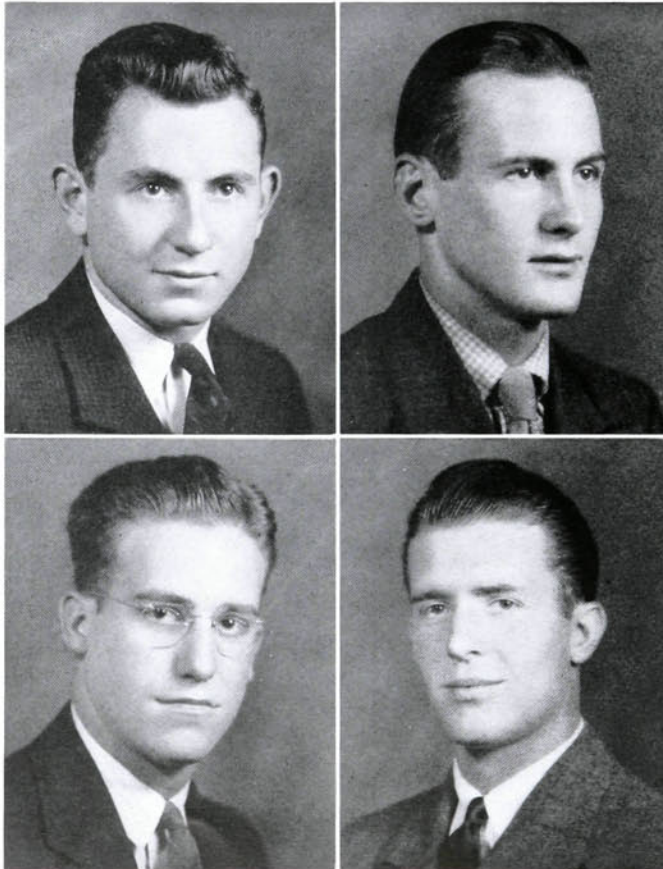
Baseball, 1, 2, 3, 4; Captain, 4; Akrothianian Literary Society, 1, 2, 3; Block "H" Club, 1, 2, 3, 4; Y. M. C. A., 4.

LEE WOODROW SHERRILL  
STATESVILLE, N. C.

*Degree:* A.B.

E H Φ

Football, 1; Baseball, 2, 3; Captain, 2; Soccer, 2, 3, 4; Captain, 4; Akrothianian Literary Society, 1, 2, 3, 4; Block "H" Club, 1, 2, 3, 4.



S E N I O R S



ALSON GRAY THOMPSON

ROANOKE RAPIDS, N. C.

*Degree: A.B.*

Christian Endeavor Society, 1, 2, 3, 4;  
Thalean Literary Society, 1, 2, 3, 4, Secretary,  
4.

VESTA PEARL TROXLER

BURLINGTON, N. C.

*Degree: A.B.*

Nikanthan Literary Society, 1, 2, 3, 4, Treas-  
urer, 3, Pianist, 4; Christian Endeavor Society,  
1, 2, 3, 4, Pianist 3, Secretary, 2; W. A. A.,  
2, 3, 4; Sergeant-at-Arms, 2; Dormitory Stu-  
dent Government, 1, 2, 3, 4, Head Proctor, 3,  
Vice-President, 4; A Capella Choir, 1, 2, 3, 4,  
Secretary, 4; Art Club, 3; Y. W. C. A., 1, 2, 3.

MARY FRANCES WARLICK

LAWNDALE, N. C.

*Degree: B.S.*

Σ Δ Φ

Mars Hill Junior College, 1, 2; A Capella  
Choir, 3, 4; Nikanthan Literary Society, 3, 4;  
Chorister, 4; Christian Endeavor Society, 3, 4.

WILLIAM WOODSON WEISNER

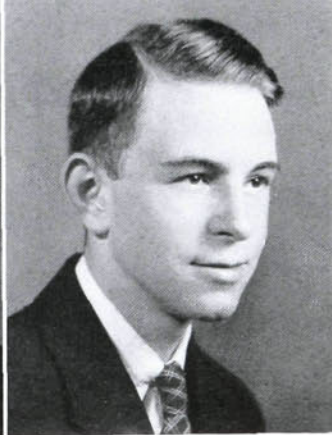
CHARLOTTE, N. C.

*Degree: A.B.*

Δ Δ Ε

*Hi-Po* Staff, 1, 2, 3, 4, Editor, 3, 4; Akrothin-  
ian Literary Society, 1, 2, 3, 4, Secretary, 2,  
Critic, 3, Vice-President, 3, President, 4; Stu-  
dent Council, 3, 4; Marshal, 3.

S E N I O R S







IRIS WELCH  
HIGH POINT, N. C.  
*Degree:* A.B. and B.S.

A Θ Ψ

Nikanthan Literary Society, 1, 2, 3, 4, Chorister, 3, Chaplain, 4; A Capella Choir, 1, 2, 4; Orchestra, 1, 2, 3; Band, 3, 4; Pan-Hellenic Council, 4; Art Club, 2, 3, Vice-President, 3.

AGNES LOUISE WILLCOX  
GREENSBORO, N. C.

*Degree:* A.B.

Nikanthan Literary Society, 1, 2, 3, 4, Pianist, 2, 3; Christian Endeavor Society, 1, 2, 3, 4, Assistant Pianist, 3, Pianist, 4; Orchestra, 3; W. A. A., 3, 4; Art Club, 3; Y. W. C. A., 1, 2, 3.

FERMAN ALEXANDER WRIGHT  
LAWNSDALE, N. C.

*Degree:* A.B.

Thalean Literary Society, 1, 2, 3, 4, Chaplain, 4; A Capella Choir, 1, 2, 3; Ministerial Association, 1, 2, 3, 4, Vice-President, 2, President, 3; Y. M. C. A., 1, 2, 3, 4; Christian Endeavor Society, 1, 2, 3, 4; Lindley Improvement Prize, 1.

JOAN CROWDER

Mascot

HIGH POINT, N. C.



S E N I O R S



## *Alma Mater*

*In our hearts we hold the Mem'ry  
Of a place we love the best;  
O'er it waves the purple banner,  
Emblem of its fearlessness.*

*When we're on the field of battle,  
When we strive for praise to thee;  
May our teams be undefeated  
Ours the crown of Victory.*

### CHORUS

*We praise thy name and honor true,  
They stand for loyalty and love;  
May yours be fame that to you is due,  
For we will always fight,  
We want the right  
To uphold thy standards high;  
To give the best we have to thee,  
Mem'ries of you we will cherish,  
H. P. C.*





ZENITH '37

JUNIOR CLASSES



---

A L S O N   G R A Y

---

•

**Officers**

ALSON GRAY  
PRESIDENT

ELBERT LANE  
VICE-PRESIDENT

ELIZABETH BAGWELL  
SECRETARY

ROBERT RANKIN  
TREASURER



# Juniors .

JOHN ALBERTSON  
HIGH POINT, N. C.



ELIZABETH BAGWELL  
HENDERSON, N. C.



WILLIAM C. BARNHOUSE  
BELLE VALLEY, OHIO

EMERY BENCINI  
HIGH POINT, N. C.



RUTH BRILES  
HIGH POINT, N. C.

EARL BRINKLEY  
THOMASVILLE, N. C.



DAVID COOPER  
HIGH POINT, N. C.

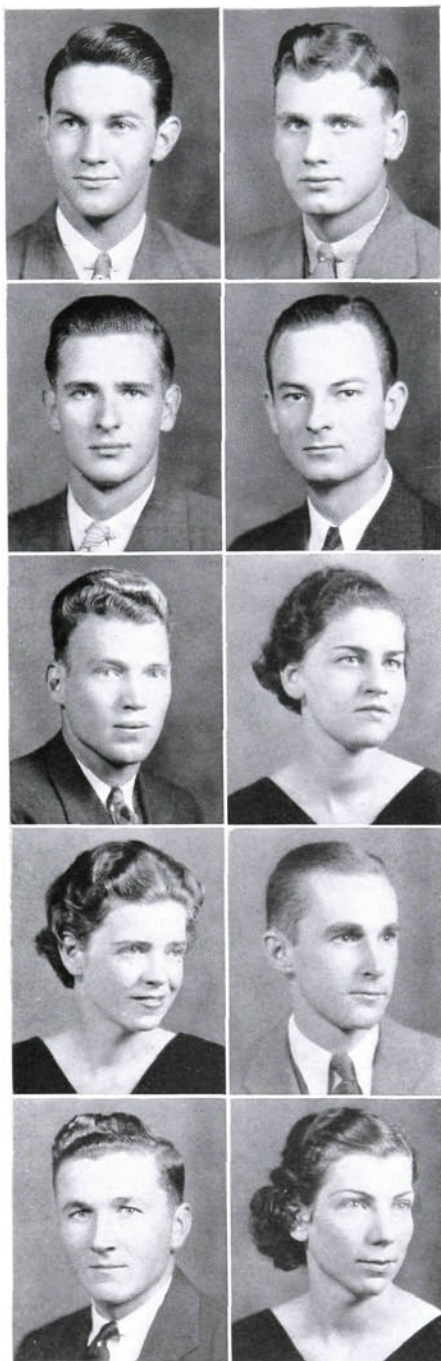
HELEN DAMERON  
LIBERTY, N. C.

MARJORIE ELKINS  
LIBERTY, N. C.



HILDRETH GABRIEL  
HIGH POINT, N. C.





# . Juniors

OCCO GIBBS  
GIBSONVILLE, N. C.

ALSON GRAY  
HIGH POINT, N. C.

ERASTUS GRIGG  
SHELBY, N. C.

EDWARD GRIMES  
WILLIAMSTON, N. C.

WAYNE HARRIS  
RUTHERFORDTON, N. C.

RUTH HENDRICKS  
HIGH POINT, N. C.

KATHLEEN HEPINSTALL  
AURELIAN SPRINGS, N. C.

THOMAS HILLIARD  
THOMASVILLE, N. C.

CLAUDE HOWELL  
NORWOOD, N. C.

BERNARDINE HURLEY  
TROY, N. C.



# Juniors .

BARBARA JENNEY  
TORRINGTON, CONN.



WHITMAN KEARNS  
FARMER, N. C.



HAZEL KISER  
HIGH POINT, N. C.

MARYE NELSON KISER  
HIGH POINT, N. C.



LORENE KOONTZ  
WINSTON-SALEM, N. C.

CERELDA LACKEY  
FALLSTON, N. C.



ELBERT LANE  
PINNACLE, N. C.

OLIVIA MARTIN  
HIGH POINT, N. C.

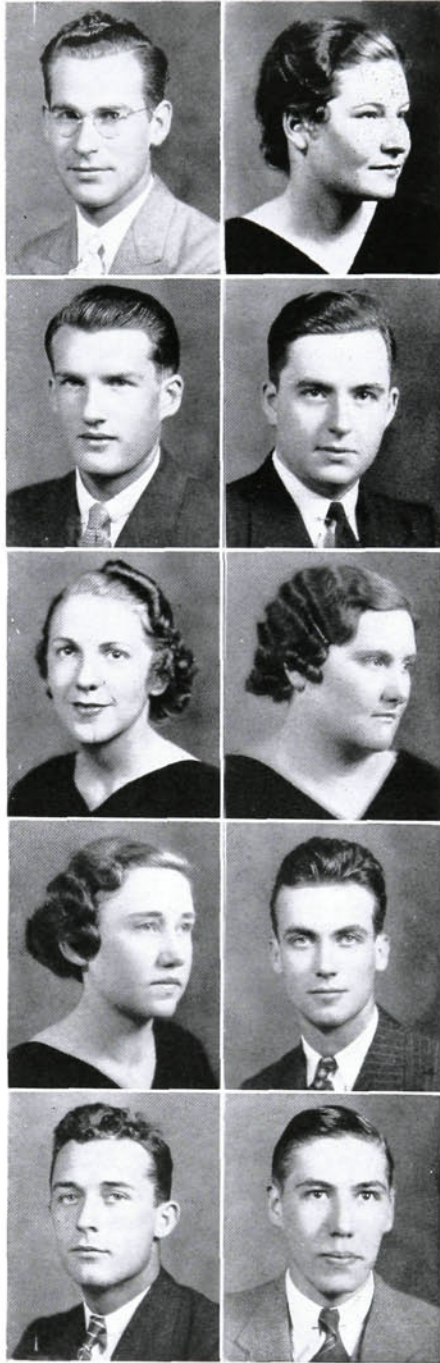


C. W. MARTIN  
POLKTON, N. C.

JAMES MATTOCKS  
HIGH POINT, N. C.







## . Juniors

J. PIERCE McKEITHEN  
GRAYSON, LA.

PAULINE MILLER  
HIGH POINT, N. C.

ROBERT RANKIN  
HIGH POINT, N. C.

MAX ROGERS  
BURLINGTON, N. C.

ANNE ROSS  
ASHEBORO, N. C.

ELSIE MAE SINK  
HIGH POINT, N. C.

VIRGINIA SPRINKLE  
TOBACCOVILLE, N. C.

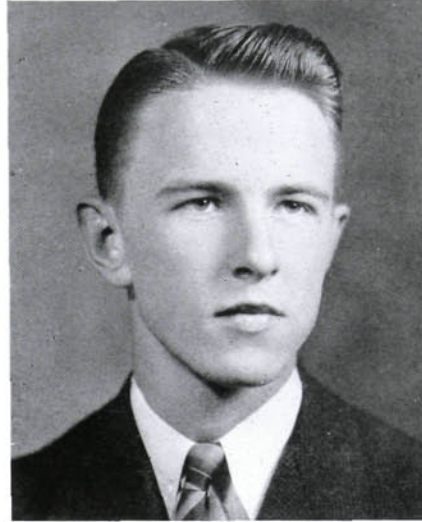
BANKS THAYER  
HIGH POINT, N. C.

QUENTIN VEACH  
THOMASVILLE, N. C.

TASKER WILLIAMS  
ESSEX, N. C.

# SOPHOMORE CLASS

'37 ZENITH



---

J O H N A P P L E

---



## Officers

JOHN APPLE  
PRESIDENT

DANIEL SHARPE  
VICE-PRESIDENT

MARY MITCHELL BAITY  
SECRETARY

EDWARD STIREWALT  
TREASURER



# S o p h o m o r e   B o y s

JOHN APPLE  
ARTHUR BOOKOUT  
VAUGHN BOONE  
NEVIL BOWMAN  
JAMES BRANDON  
HOLLAND BRINKLEY  
FRED COX, JR.  
GEORGE CRAVER  
BICKETT ELLINGTON  
BOYD FOUTS  
ULMER FREEMAN  
KERMIT FRAZIER  
ODELL GALLIMORE

JACK GIBSON  
PAUL HAMILTON  
CHARLES HARVILLE  
PORTER HAUSER  
M. C. HENDERSON, JR.  
WILLIAM HESTER  
G. W. HOLMES, III  
FRANK JOHNSON  
JAMES JONES  
OWEN LINDLEY  
VANCE KESTER  
A. C. LOVELACE, JR.  
DWIGHT MORGAN  
CHARLES OSTWALD

ROGER PEELER  
EDWARD STIREWALT  
DANIEL SHARPE  
RICHARD SETZER  
ALLEN THACKER  
GLENN TOWERY  
LESTER VALENTINE  
GILMER WAGONER  
LINDSAY WALKER  
ALLEN WATSON  
EDGAR WELBORNE  
S. J. WELBORN  
CHARLES WHITE





'37 ZENITH



# Sophomore Girls

MARGARET AUSTIN  
MARY MITCHELL BAITY  
MARGARET BROWN BAILEY  
HELEN BATES  
VIRGINIA BURTON  
MARY MILLER CRAWFORD  
DOROTHY CUMMINGS  
VIRGINIA DIXON  
VIRGINIA CURRY  
ELIZABETH DARR  
VERA MAE FERREE

ELIZABETH HOFFMAN  
LUCILLE INGRAM  
VIOLET JENKINS  
DOROTHY JONES  
BESSIE JOYCE  
RUBY KELLER  
JACQUELINE KINNEY  
RUTH LEE  
EVELYN LINDLEY  
OLGA MARLETTE  
FRANCES MUSE  
MARJORY MCFADDEN

SARAH MARIE NEESE  
NANCY PARHAM  
MYRTLE POORE  
GILBERT PRIMM  
SARA FORREST THOMPSON  
HAZEL TUCKER  
EVELYN TURNER  
MARGARET WALTON  
PATSI WARD  
ANN WATKINS  
DOROTHY WIGGINS





# CONTRIBUTORS

*We take this means of expressing our appreciation of the people who have been of inestimable aid in the production of the 1937 ZENITH*

MISS VERA IDOL

For her helpful advice in preparing the manuscript copy.

MR. W. A. DANIEL

Who helps to plan the ZENITH and see that the plans are correctly carried out. He makes the invaluable "service calls" and gives us the necessary technical information, as well as a lot of new ideas.

MR. R. G. BENSON

The real power behind the ZENITH, who stays in Nashville and sees to it that we get all our manuscript into correct press form. He handles all the work of the printing company that pertains to our annual.

MR. M. F. DUNBAR

The "watch the birdie" man from Dunbar & Daniel Studio that makes the clear, distinct pictures found in our annual. He sees to it that we get good service from that studio.

MR. HERBERT HITCH

Who is responsible for the clear, high-grade engravings which appear in the ZENITH. His personal interest and courteous and efficient service make him an indispensable part of the book.

ZENITH RADIO CORPORATION

For helpful suggestions and permission to use their trade-name on the cover.

# FRESHMAN CLASS

'37 ZENITH



---

H A L Y O W

---



## Officers

HAL YOW  
PRESIDENT

MARC LOVELACE  
VICE-PRESIDENT

MABEL WARLICK  
SECRETARY

REBECCA COBLE  
TREASURER





# F r e s h m a n   B o y s

forrester auman  
owen bales  
irvin black  
reid black  
beverly bond  
john cagle  
james clark  
herbert clein  
clyde clodfelter  
ernest cook  
robert craver  
george elkins  
buren garlington  
joe gray  
hugh hampton  
frank hartman  
john hauss

frank hege  
robert henderson  
j. h. hicks, jr.  
max hill  
joseph hilliard  
reginald hinshaw, jr.  
harold holton  
richard hubbard  
ralph hughes  
j. m. hutton  
charles jarrell  
robert johnson  
tom lamar  
william locke  
marc lovelace  
billy meredith  
j. v. morgan  
william mckinney

j. j. mckeithen  
byron nifong  
jack palmer  
mccrary peace  
william rennie  
lee spencer  
john stanley  
richard short  
james shanahan  
robert thompson  
aubrey walley  
foy warfford  
george webster  
donald wehry  
arthur york  
raymond york  
hal yow





# F r e s h m a n   G i r l s

doris betts  
helen blackburn  
maxine bobbitt  
annis brown  
mary carraway  
eleanor coble  
rebecca coble  
louise cole  
adelaide conner  
helen craft  
hazel crutchfield  
ruby darr  
dorothy davis

cecilia farlow  
iva mae fowler  
ruth futrelle  
alice hoffman  
nell holton  
jean hunt  
betty idol  
martha idol  
sibyl fowler  
cecilia isaac  
alice jones  
elizabeth kivett  
danease manley  
mary mitchell  
esther miran  
ruth myers  
mary e. payne  
margie pittman

doris reece  
mary ruth reitzel  
margaret sink  
ruth shoaf  
eleanor tanner  
ruth m. thompson  
edith vance  
florence wagoner  
helen waller  
verel ward  
mabel warlick  
vera weant  
dezree younts







## FIRST AND SECOND YEAR COMMERCIAL STUDENTS

### ROLL

IRVIN BLACK  
 FRANCES MUSE  
 ANNE WATKINS  
 EVELYN TURNER  
 FRED COX  
 MABEL WARLICK  
 BETTY IDOL  
 ELEANOR TANNER  
 EDITH VANCE  
 FLORENCE WAGONER  
 EMERY BENCINI  
 RICHARD HUBBARD  
 ELIZABETH HOFFMAN  
 EVELYN PAYNE  
 RUTH SHOAF  
 NANCY PARHAM  
 SARAH MARIE NEESE

MAXINE BOBBITT  
 DEZREE YOUNTS  
 HELEN CRAFT  
 HENRY CLINE  
 JAMES BRADNER  
 TOM LAMAR  
 HENRY SURRATT  
 MARGIE PITTMAN  
 HELEN HUNTER  
 VEREL WARD  
 CECILIA ISAAC  
 DORIS BETTS  
 BESSIE JOYCE  
 MARGARET SINK  
 DOROTHY DAVIS  
 HELEN BLACKBURN  
 ANNIS BROWN

DORIS REECE  
 ODELL GALLIMORE  
 HAL YOW  
 BOYD FOUTS  
 DAVID MCKINNON  
 MAX HILL  
 DOROTHY WIGGINS  
 RICHARD SHORT  
 RALPH HUGHES  
 ROBERT HENDERSON  
 MCCRARY PEACE  
 BILLY MEREDITH  
 OWEN B. BALES  
 HAROLD HOLTON  
 JAMES DURLAND  
 HENRY TERRY  
 ROBY CLODFELTER





# Special Students

HOWARD BRADNER	FRANCES MANN
ANNETTE COLTRANE	RAYMOND WELBORN
HELEN DAMERON	HENRY SURRETT
JAMES DURLAND	M. D. MCKINNON
MRS. G. A. JOHNSON	ETHEL CULLER
FRANCES LAMBETH	VIRGINIA BOYLES
FRED R. LOVE	CHARLES LINGO

W. B. SHIELDS



# Music Students

GLADYS ELLINGTON	GEORGE E. HUMPHREYS
BETTIE HARDIN	NELLE M. HUMPHREYS
PAULINE KENNETT	



ONE OF THE NBC STUDIOS IN THE RCA BUILDING, RADIO CITY



**A T H L E T I C S ●**





# RÉSUMÉ 1936-1937

## BASKETBALL—GAME BY GAME

(By ALTON HARTMAN)

The North State champions get off to a good start as title-holders on December 4, when they whip the McCrary Eagles at Asheboro . . . Unique turns the table to win, 35 to 26, on the following night . . . Meyer's win over the Panthers at Greensboro, 39 to 35, in close contest . . . Yowmen come back to win over Winston Y and Durham Y before Christmas holidays.

Atlantic Christian is the first victim of the Panthers in the conference race, falling before the locals, 53 to 36, here on January 7 . . . Panthers then take Meyer's into camp, 47 to 31, before local fans.

Swinging westward, the defending champions defeat Appalachian at Boone, 25 to 20, on January 11, and follow the next night with thrilling 40 to 33 win over Lenoir-Rhyne Bears at Hickory.

Appalachian, armed with horseshoes, rabbit feet, and four-leaf clovers, take the locals down a notch by winning, 32 to 28, in local gym on January 15 . . . Panthers eke out 27 to 24 win over Unique before home fans.

"We came, we saw, we conquered," was the victory chant of the Panthers after wrecking Elon on night of January 23 . . . Final score: High Point, 30; Elon, 21 . . . Local Triangles fall, 52 to 40 . . . Panthers double score on Guilford, 44 to 22, here on January 30.

Indians retreat from Panther stronghold on night of February 3, after suffering 47 to 33 defeat . . . Collegians whip Triangles for second time, 46 to 19 . . . McCrary (Flythe, Cheek & Co.) victims of 40 to 25 whipping here on February 6 . . . Guilford loses, 50 to 37, at Guilford, but doesn't burn gym.

High Point, February 13—Elon defeats High Point Panthers in two extra period battle, 45 to 40.

Panthers travel to East and take Bulldogs, 23 to 19, on February 15 . . . Pirates fall before Panthers, 42 to 28, on following night . . . Locals pushed to defeat Catawba at Salisbury on February 20, but finally win by 31 to 26 count . . . Brinkley drops in foul toss to defeat Atlantic Christian, 26 to 25, here on the twenty-third.

Bears get the best of Panthers in tough battle on local court, February 27 . . . Score, 39 to 36.



## ATHLETIC ASSOCIATION

All athletics at the college are under the control of the Athletic Association. This group, guided by Dr. C. R. Hinshaw as president, has provided a well-rounded athletic program for the College—one that rates among the highest of other colleges in the North State Conference.

The Athletic Council supervises the scheduling of all games, the determining of the eligibility of players, and the enforcement of all conference rules. The Council also awards all athletic monograms.

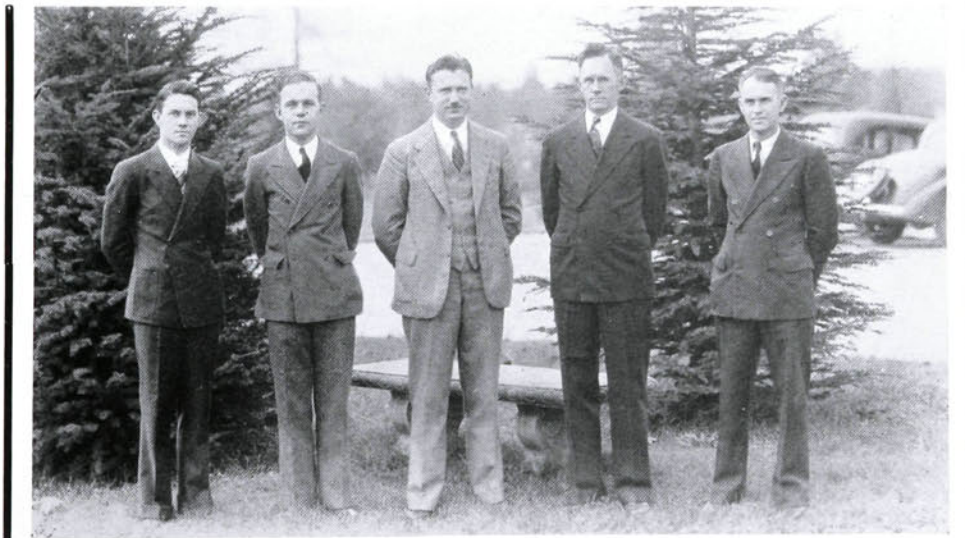
The Association has so directed athletics at the College that the fundamental aims and purposes back of all its programs have been and will continue to be realized—namely, that all participants may be trained in initiative, self-control, cooperation, and fine sportsmanship, and that a fine, wholesome college spirit may prevail.



COACH C. VIRGIL YOW

Through his ability to work with men and his unwillingness to admit defeat, Coach Yow has proved himself valuable and won the admiration of all who know him.

*Below:* GIBBS, AUSTIN, YARBOROUGH,  
HINSHAW, ALLRED





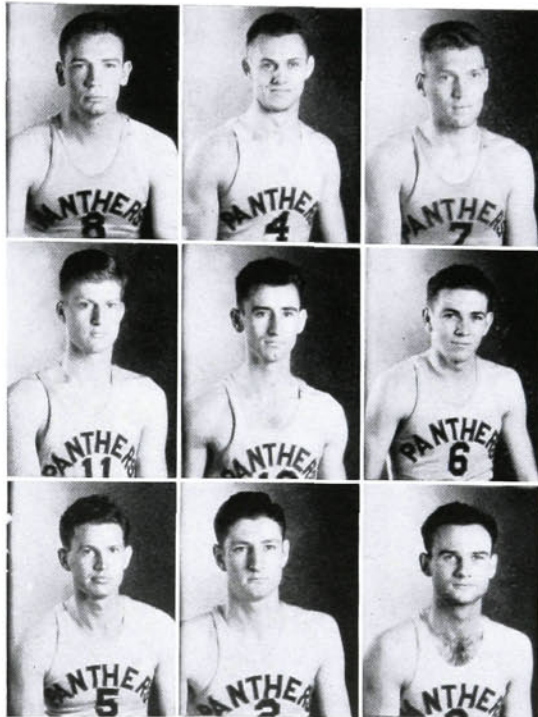


## ZENITH '37

**A** DETERMINED drive by the Purple Panther cagers for retention of the North State crown fell short as the Yowmen skidded down the conference ladder to rest in third place at the close of the season.

The record books give the Panthers a good percentage, although the crown was lost. They won a total of nineteen games during a twenty-four-game schedule. In the conference games they won ten games and lost three, while in the exhibition contests with outside foes the locals won nine in eleven starts. Appalachian, Elon, Lenoir-Rhyne were the only conference foes to win over the Panthers.

With just a few more breaks the Purple and White warriors would have kept the conference flag flying over the local campus. The upset by Appalachian was unexpected, but the Elon classic, which will go down in history as the "Battle of the Century," was anybody's contest until the final whistle. Little honor was lost when the charges of Coach C. Virgil Yow lost the last game to Lenoir-Rhyne by a narrow margin.



## VARSITY BASKETBALL

1937

### SQUAD

TOWERY  
MARTIN  
HARRIS  
HAMPTON  
BRINKLEY  
HESTER  
BOOTH  
KEARNS  
KOONTZ





THE basketball season was a success for many reasons. Although the team failed to take down top honors, they exhibited a fine spirit of play and sportsmanship throughout. A "basketball-minded" student body kept the enthusiasm up to top pitch, and attendance at the home games exceeded that of any previous year in the history of the cage sport in this school.

NORTH STATE CONFERENCE RESULTS

High Point	..... 53;	A. C. C.	..... 36
High Point	..... 25;	A. S. T. C.	..... 21
High Point	..... 40;	Lenoir-Rhyne	..... 33
High Point	..... 28;	A. S. T. C.	..... 32
High Point	..... 30;	Elon	..... 21
High Point	..... 44;	Guilford	..... 22
High Point	..... 47;	Catawba	..... 33
High Point	..... 50;	Guilford	..... 37
High Point	..... 40;	Elon	..... 45
High Point	..... 23;	A. C. C.	..... 19
High Point	..... 31;	Catawba	..... 26
High Point	..... 26;	A. C. C.	..... 25
High Point	..... 36;	Lenoir-Rhyne	..... 39



OCCO GIBBS  
Manager





## FRESHMAN BASKETBALL

The Purple Kitten squad was kept intact only long enough to show that they had a good club. One member was graduated to the varsity, while the other Kittens were merged into the junior varsity squad.

While playing under the name of the Kittens, the players made a successful invasion of the western part of the state. Although only five men were carried on the trip, four strong high school teams were defeated on four successive nights.

The five players who shared the glory of establishing this record of stamina and endurance were Hinshaw, Hicks, forwards; Hampton, the brilliant center, who was the lone contribution of the Kittens to the varsity; Yow and Hilliard, guards.

The merger with the junior reserves into a junior varsity club proved successful, as a winning combination was produced. The outstanding performers of this club were Hinshaw, Hicks, Garlington, Yow, Hilliard, Durland, Koontz, Welborn, Sherrill, Rennie, and Fitzgerald.

All of the players showed a remarkable degree of development before the season was over, and gave much promise of adding to the strength of the varsity club before they finish their collegiate cage career.







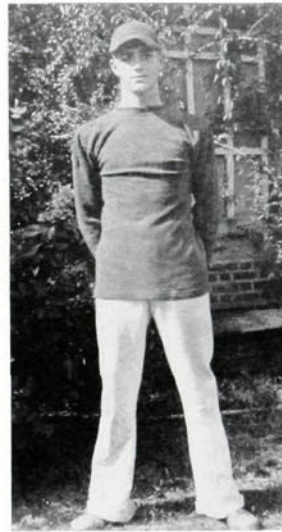
The Purple Panther varsity soccer club "kicked" its way through another glorious season of competition against the outstanding college elevens of the state for a total of four victories and two defeats.

Although two losses were suffered, the team continued to uphold the high standards established by the soccer elevens here in the past.

Davidson's Wildcats and the Indians of Catawba both felt the sting of the Panther claws twice during the season. The Duke Blue Devils, who won two from the locals, were the only club able to win over the Purple-clad team.

The principal figures connected with the activities of the team during the season were Lee Sherrill, a veteran Senior backfield ace who captained the squad; Fred Cox, manager; and Broadus Culler, who returned to serve as coach in this sport for the fourth consecutive year.

## SOCCER TEAM



BROADUS CULLER  
*Coach*







## BASEBALL

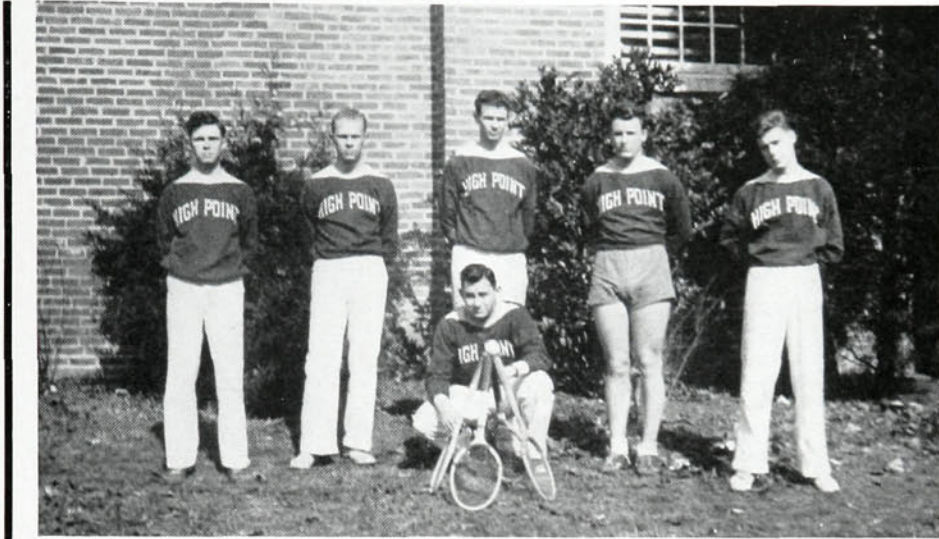
### CONFERENCE RESULTS

High Point .....	2
Catawba .....	5
High Point .....	5
Atlantic Christian .....	4
High Point .....	11
Atlantic Christian .....	4
High Point .....	7
Lenoir-Rhyne .....	9
High Point .....	3
Catawba .....	5
High Point .....	13
Guilford .....	4
High Point .....	9
Catawba .....	6
High Point .....	6
Lenoir-Rhyne .....	7
High Point .....	6
Elon .....	11
High Point .....	1
Elon .....	12
High Point .....	9
Elon .....	15
High Point .....	3
Lenoir-Rhyne .....	7
High Point .....	4
Catawba .....	6
High Point .....	21
Atlantic Christian .....	1
High Point .....	6
Atlantic Christian .....	4
High Point .....	4
Guilford .....	6

The Panther nine failed to maintain its first division rating in the North State Conference, landing in fifth place at the close of the 1936 season. Still, the members of the club exhibited a fine spirit of play and lost many hard-fought games by narrow margins.

Playing a full twenty-five-game schedule, the Yowmen registered twelve victories. In the North State race they turned in six victories in sixteen starts. They experienced a better measure of success in their exhibition games with strong amateur, semi-pro, and other college teams by winning six of nine games.

Harris, Rudisill, Brinkley, and Diamont bore the brunt of the battery attack, while Culler, Grigg, and Dorsett also saw some mound duty. Culler, scrappy shortstop who turned pro, and Harris led the club in hitting, clipping the apple at a percentage of .320 and .339, respectively.



This year's tennis team bids fair to be the strongest to represent High Point in recent years. An ambitious schedule, including Appalachian, Lenoir-Rhyne, Elon, Guilford, Catawba, Atlantic Christian, and several other strong clubs, is planned for the Panther racquet wielders.

Lettermen back from last year's team are Captain Rogers, Setzer, and Pressley. Several Freshmen, including Hinshaw and Short, promise to prove valuable to the team for the spring season.

Individual victories in the 1936 season were made by Niernsee, who won three of eleven; Jarrett, eight of twelve; Rogers, six of twelve; Setzer, five of twelve; and White, two out of twelve.

Prof. Owens, who has succeeded Prof. Yarborough as coach, seems to be getting the team in fine shape for the coming contests.

# TENNIS

## RESULTS, 1936

High Point .....	4
A. S. T. C. ....	4
High Point .....	3
Lenoir-Rhyne .....	4
High Point .....	0
Elon .....	9
High Point .....	2
Catawba .....	7
High Point .....	1
A. C. C. ....	6
High Point .....	0
Elon .....	9
High Point .....	2
Guilford .....	5
High Point .....	7
Louisburg .....	0
(Forfeit)	
High Point .....	5
Guilford .....	2
High Point .....	4
Lenoir-Rhyne .....	4
High Point .....	7
Louisburg .....	0
High Point .....	2
A. C. C. ....	5





ROLL

MARY MITCHELL BAITY	ELISE KILPATRICK
ELIZABETH BAGWELL	CERELDA LACKEY
HELEN BATES	EVELYN LINDLEY
MARY MARGARET BATES	OLGA MARLETTE
HELEN DAMERON	ESTHER MIRAN
MARGARET DIXON	FRANCES MUSE
VIRGINIA DIXON	NANCY PARHAM
INZA HILL	PAULINE PARKER
ELIZABETH HOFFMAN	GILBERT PRIMM
FAYE HOLT	SARA FORREST THOMPSON
HELEN RAE HOLTON	VESTA TROXLER
HELEN HUNTER	EVELYN TURNER
BERNARDINE HURLEY	MARGARET WALTON
OLIVE HUTCHINS	PATSIE WARD
MARGUERITE JENKINS	ANN WATKINS
VIOLET JENKINS	DOROTHY WIGGINS
JACQUELINE KINNEY	AGNES LOUISE WILCOX

*Sponsors*

MRS. G. I. HUMPHREYS  
MISS GILBERT MUSE

# WOMAN'S ATHLETIC ASSOCIATION

OFFICERS

PAULINE PARKER . . . . . *President*  
MARGARET DIXON . . . . . *Vice-President*  
BERNARDINE HURLEY . . . . . *Secretary*  
ELISE KILPATRICK . . . . . *Treasurer*

*Council Members*

MARGUERITE JENKINS OLGA MARLETTE  
NANCY PARHAM ESTHER MIRAN  
FAYE HOLT CERELDA LACKEY  
EVELYN LINDLEY  
MISS BRAME . . . . . *Advisor*







## WOMAN'S BASKETBALL

Every Monday and Thursday afternoon during basketball season, between the hours of four and six, you will find a group of co-eds scrapping on the floor of Harrison Gymnasium. Although the girls do not engage in intercollegiate games, basketball has proved to be the most successful and interesting of intramural sports. More class enthusiasm and stirring competition are demonstrated during the basketball tournament than at any other time during the entire program of the Woman's Athletic Association.

Fall sports were culminated by the basketball tournament, which was scheduled the first week in March. Each class team fought hard and was urged to victory by loyal boosters. In the accompanying picture may be seen a representative group of Miss Brame's basketeers.





## W O M E N ' S V O L L E Y B A L L

When the volleyball season opened, fall sports for women came into full swing. During the annual class tournament, which was held the first two weeks in December, the hard-hitting Sophomore team defeated all other teams and recaptured the Brame Loving Cup, an award offered each fall to the winner of this tournament.

Class competition during the past season was particularly keen. With a wealth of hopeful candidates seeking team positions, it was very easy to select four efficient groups of volleyball players with true point-making ability.

Naturally after months of ardent training a great deal of interest was shown in the championship play in December. Results of the tournament were:

Juniors .....	16;	Sophomores .....	41
Seniors .....	25;	Sophomores .....	35
Freshmen .....	37;	Juniors .....	27
Freshmen .....	22;	Seniors .....	31
Juniors .....	24;	Seniors .....	28
Sophomores .....	40;	Freshmen .....	23

The faculty-student volleyball game was perhaps the most entertaining of any of the series. The students overwhelmed the faculty team in two straight games. The battle, sponsored by the Woman's Athletic Association, was the first of its kind ever held on the local campus.





## T U M B L I N G

At different points in the pyramid above may be found members of the tumbling team, a team organized three years ago, which has shown much skill in executing various feats.

Although tumbling has been taught along with other sports for women, it did not have an organized team until recently. Special attention is given to those girls who show skill in this sport, which has proved itself to be one of the most entertaining of any in which they participate.

Since last year a class has been taught and the girls have learned to do hand-springs, head-stands, forward and backward rolls, and to make various figures.

Shown in the picture are: Coble, Warlick, Tanner, Farlow, Thompson, Carraway, Isaac, Betts, Darr, Bobbitt, Miran, and Reece.



MASTER CONTROL DESK, NERVE CENTER OF BROADCASTING IN THE RCA BUILDING, RADIO CITY





# ORGANIZATIONS ●

S T U D E N T  
G O V E R N M E N T



ALLEN AUSTIN  
President

The Student Council is not primarily a judicial body. It is the means by which the student body conveys its opinions to the administration. More important than this function, however, is the attempt by the Council to promote harmony and good feelings among the students. The success of all organizations on the campus depends on the attitude of the students toward the Student Government.

Student Government this year, under the competent leadership of Allen Austin, has laid the foundation for a stronger organization in the future.



Hinshaw, Ward, Watkins, Holmes, M. Bates  
Dameron, Gibbs, Austin, Bell, Weisner, Cooper





# COMMERCE CLUB

## OFFICERS

PAUL OWEN . . . . . *President*      DOROTHY WIGGINS . . . . . *Secretary*  
 WILSON ROGERS . . . . . *Vice-President*      CHARLES RIDGE . . . . . *Treasurer*

## MEMBERS

FORRESTER AUMAN	ROBERT HENDERSON	JOSEPH PAYNE
EMERY BENCINI	MAX HILL	LOIS PRESSLEY
DORIS BETTS	ELIZABETH HOFFMAN	DORIS REECE
REID BLACK	HAROLD HOLTON	CHARLES RIDGE
HELEN BLACKBURN	RICHARD HUBBARD	WILSON ROGERS
MAXINE BOBBITT	RALPH HUGHES	DANIEL SHARPE
ANNIS BROWN	HELEN HUNTER	RICHARD SHORT
JULIA COE	BETTY IDOL	MARGARET SINK
FRED COX	CECELIA ISAAC	HENRY SURRATT
HELEN CRAFT	BARBARA JENNEY	ELEANOR TANNER
RUBY DARR	ROBERT JOHNSON	EVELYN TURNER
JAMES DURLAND	BESSIE JOYCE	EDITH VANCE
DOROTHY DAVIS	TOM LAMAR	FLORENCE WAGONER
GEORGE ELKINS	OWEN LINDLEY	VEREL WARD
CECELIA FARLOW	DAVE MCKINNON	MABEL WARLICK
BOYD FOUTS	FRANCES MUSE	ANN WATKINS
ODELL GALLIMORE	SARAH MARIE NEESE	DOROTHY WIGGINS
FRANCES GUETH	NANCY PARHAM	DEZREE YOUNTS
FRANK HEGE	EVELYN PAYNE	HAL YOW





Troxler, Hurley, Baity, Hill, Pittman

WOMAN'S HALL STUDENT GOVERNMENT

INZA HILL . . . . . *President*      VESTA TROXLER . . . . . *Vice-President*  
 BERNARDINE HURLEY . . . *Secretary-Treasurer*

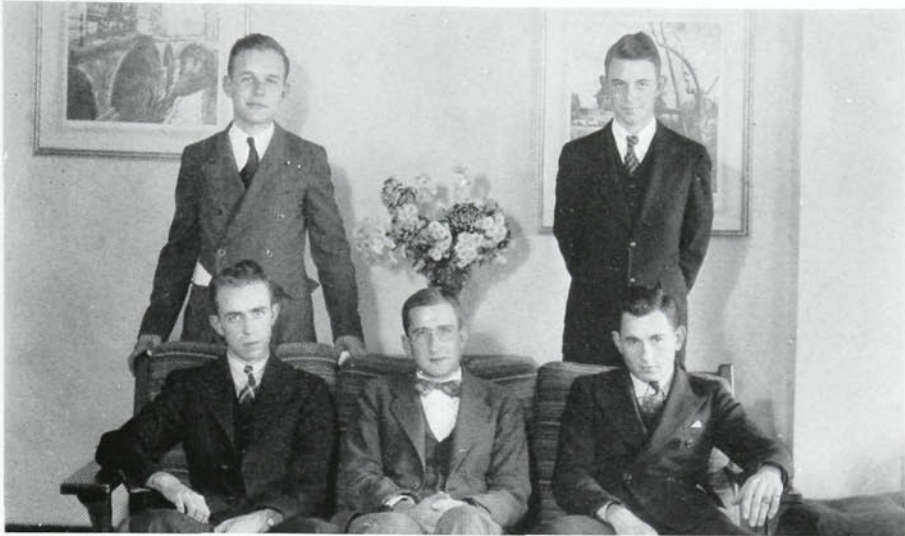


Owen, Hartman, Dawson, Hartman, Brinkley, Peeler

McCULLOCH HALL STUDENT GOVERNMENT

ALTON HARTMAN . . . . . *President*      ELBERT LANE . . . . . *Vice-President*  
 SHELDON DAWSON . . . . *Secretary-Treasurer*





Austin, Weisner, Ridge, Rulfs, Rogers

PUBLICATIONS BOARD



The Zenith, The Hi-Po, The Handbook

STUDENT PUBLICATIONS



CHARLES E. RIDGE  
Editor

## THE ZENITH

The staff of the 1937 ZENITH has attempted to give you, the students of High Point College, what you wanted. We hope that we have met with at least partial success. Those of you who understand the chaos out of which a college annual is born are the only competent judges of such a book. Many of the things which do not live up to your expectations cause us far more regret than any student with a misspelled name could ever know.

We have met with numerous difficulties, most of which we hope have been surmounted. This book is made possible by your presence, activity, and support. The untiring efforts of the business staff in handling the various contracts and advertising deserve as much credit as the editorial staff for its planning and composing. It is our desire that this book be not an album for graduating Seniors to use as a space filler for lonely shelves, but a true year book showing a cross-section of the activities and personnel of the College. We hope that you will charitably hide its defects in the light of its better points.

CHARLES E. RIDGE.



Wiggins, Ridge, Hunter, Gibbs





# THE ZENITH

## STAFF

CHARLES E. RIDGE  
*Editor*

DOROTHY WIGGINS  
*Secretary*

OCCO GIBBS  
*Photographer*

ELSIE MAE SINK  
*Associate Manager*

WILSON ROGERS  
*Business Manager*

G. W. HOLMES  
*Associate Manager*

HELEN HUNTER  
*Associate Manager*



WILSON ROGERS  
*Business Manager*

*Pictures illustrating the progress of radio,  
found in this book, are furnished through the  
courtesy of Radio Corporation of America.*

*THE MARCH OF TIME, on page 102, is  
used by permission of TIME, The Weekly  
Newsmagazine.*



Holmes, Rogers, Sink



W. W. WEISNER  
Editor

## THE HI-PO

For the first time in its history, *The Hi-Po* this year has been in the hands of the same editor and business manager for a second consecutive year. We believe that our added experience and that of the staff has been reflected in a better paper.

An eventful year at the college has given us an opportunity to announce many important happenings. We were particularly pleased to record the beginning of work on the athletic field and the Wrenn Library building, and the second North Carolina Press Association conference here within three years.

The nine Seniors on the business and editorial staff leave the paper with a feeling of sadness, but we believe that the underclassmen with whom we have worked are completely capable of carrying on our work after we are gone.

W. W. WEISNER.



Editorial Staff, THE HI PO





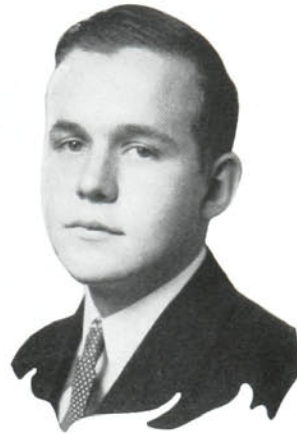
# THE HI-PO

## EDITORIAL DEPARTMENT

W. W. WEISNER . . . . . *Editor*  
DOROTHY BELL . . . . . *Managing Editor*  
M. A. HARTMAN . . . . . *Sports Editor*

## BUSINESS DEPARTMENT

ALLEN AUSTIN . . . . . *Business Manager*  
W. C. BARNHOUSE . . . . . *Advertising Manager*  
S. W. MYERS . . . . . *Circulation Manager*



ALLEN AUSTIN  
Business Manager

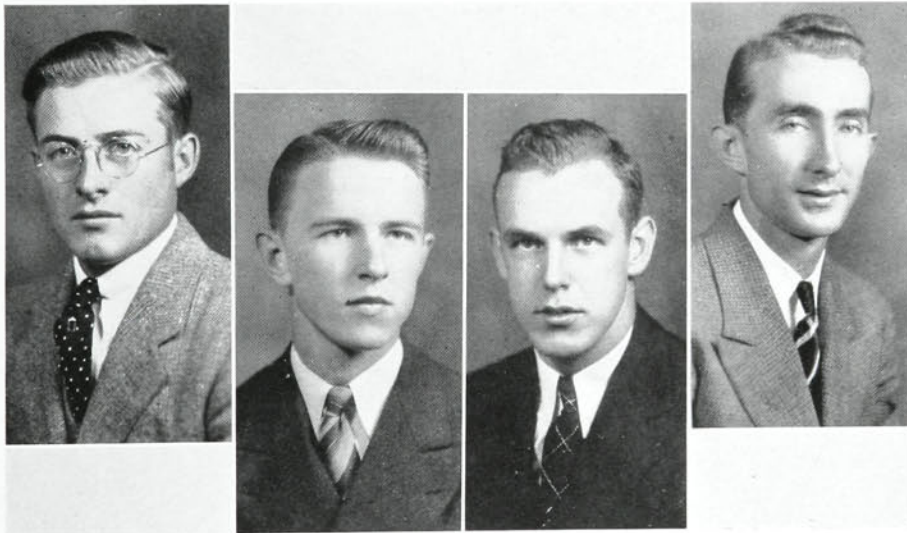
## REPORTERS

DAVID COOPER, INZA HILL, JULIA COE, M. M. BATES, EVELYN TURNER, NANCY PARHAM, HELEN BATES, VIRGINIA CURRY, JOHN STANLEY, REGINALD HINSHAW, VIOLET JENKINS, JAMES CLARK

## BUSINESS STAFF

JOHN APPLE

S. B. DAWSON



Barnhouse, Apple, Dawson, Myers



## AKROTHINIAN LITERARY SOCIETY

### OFFICERS

W. W. WEISNER . . . . . *President*  
 SHELDON DAWSON . . . . . *Vice-President*  
 MAX ROGERS . . . . . *Secretary*  
 ROBERT RANKIN . . . . . *Treasurer*  
 EDWARD STIREWALT . . . . . *Marshal*  
 PORTER HAUSER . . . . . *Chaplain*  
 DANIEL SHARPE . . . . . *Assistant Secretary*  
 REGINALD HINSHAW . . . . . *Assistant Marshal*  
 ALSON GRAY . . . . . *Critic*

### MEMBERS

FORRESTER AUMAN	JAMES MATTOCKS
WILLIAM BARNHOUSE	PAUL OWEN
HOLLAND BRINKLEY	ROGER PEELER
DAVID COOPER	ROBERT RANKIN
SHELDON DAWSON	MAX ROGERS
GEORGE ELKINS	DAN SHARPE
ALSON GRAY	RICHARD SHORT
JOE GRAY	HENRY SURRATT
PORTER HAUSER	WILLIAM WEISNER
J. H. HICKS	FOY WARFFORD
REGINALD HINSHAW	HAL YOW

LEE SHERRILL





## ARTEMESIAN LITERARY SOCIETY

### OFFICERS

JULIA COE . . . . .	<i>President</i>	LUCILLE INGRAM . . . . .	<i>Pianist</i>
MARJORIE ELKINS . . . . .	<i>Vice-President</i>	MARY MITCHELL BAITY . . . . .	<i>Chaplain</i>
VIRGINIA DIXON . . . . .	<i>Secretary</i>	NANCY PARHAM . . . . .	<i>Reporter</i>
MARGUERITE JENKINS . . . . .	<i>Treasurer</i>	DOROTHY WIGGINS, FRANCES MUSE .	<i>Monitors</i>
MARGARET DIXON . . . . .	<i>Critic</i>	DOROTHY JONES . . . . .	<i>Chorister</i>

### MEMBERS

MARGARET AUSTIN	HILDRETH GABRIEL	LORENE KOONTZ
MARY MITCHELL BAITY	FRANCES GUETH	RUTH LEE
MAXINE BOBBITT	SARA HARRIS	DANEASE MANLEY
MARY H. CARRAWAY	HELEN RAE HOLTON	OLGA MARLETTE
RUTH BRILES	NELL HOLTON	GLADYS MAXWELL
REBECCA COBLE	JEAN HUNT	FRANCES MUSE
JULIA COE	OLIVE HUTCHINS	NANCY PARHAM
LOUISE COLE	BETTY IDOL	ELIZABETH PIRTLE
HELEN CRAFT	MARTHA IDOL	ANN ROSS
HAZEL CRUTCHFIELD	LUCILLE INGRAM	RUTH M. THOMPSON
HELEN DAMERON	MARGUERITE JENKINS	SARA FORREST THOMPSON
RUBY DARR	VIOLET JENKINS	EVELYN TURNER
MARGARET DIXON	DOROTHY JONES	EDITH VANCE
VIRGINIA DIXON	JACQUELINE KINNEY	MABEL WARLICK
MARJORIE ELKINS	HAZEL KISER	DOROTHY WIGGINS
	MARYE NELSON KISER	



## THALEAN LITERARY SOCIETY

### OFFICERS

SAMUEL MYERS . . . . . *President*  
 CHARLES E. RIDGE . . . . . *Vice-President*  
 ALSON THOMPSON . . . . . *Secretary*  
 GILMER WAGONER . . . . . *Assistant Secretary*  
 J. E. GARLINGTON . . . . . *Treasurer*  
 ALTON HARTMAN . . . . . *Critic*  
 JOHN APPLE . . . . . *Chief Marshal*  
 VAUGHN BOONE . . . . . *Reporter*

### MEMBERS

JOHN APPLE	OCCO GIBBS	ROBERT JOHNSON
ALLEN AUSTIN	PAUL HAMILTON	WILLIAM RENNIE
BEVERLY BOND	ALTON HARTMAN	CHARLES E. RIDGE
ODELL BROWN	FRANK HARTMAN	ALSON THOMPSON
JOHN CAGLE	ROBERT HENDERSON	AUBREY WALLEY
ULMER FREEMAN	J. SILVESTER HIGGINS	GILMER WAGONER
BUREN GARLINGTON	MAX HILL	TASKER WILLIAMS
J. EZELL GARLINGTON	G. W. HOLMES, III	FERMAN WRIGHT
	RALPH HUGHES	
	OWEN LINDLEY	
	A. C. LOVELACE, JR.	
	MARC LOVELACE	
	J. J. MCKEITHEN	
	J. P. MCKEITHEN	
	DWIGHT MORGAN	





## NIKANTHAN LITERARY SOCIETY

### OFFICERS

FAYE HOLT . . . . .	<i>President</i>	VIRGINIA CURRY . . . . .	<i>Monitor</i>
BERNARDINE HURLEY . . . . .	<i>Vice-President</i>	IRIS WELCH . . . . .	<i>Chaplain</i>
MARGARET WALTON . . . . .	<i>Secretary</i>	DOROTHY BELL . . . . .	<i>Critic</i>
ELSIE MAE SINK . . . . .	<i>Treasurer</i>	VESTA TROXLER . . . . .	<i>Pianist</i>
MARY FRANCES WARLICK . . . . .			<i>Chorister</i>

### MEMBERS

ELIZABETH BAGWELL	KATHLEEN HEPINSTALL	MARJORIE PITTMAN
HELEN BATES	INZA HILL	MYRTLE POORE
MARY MARGARET BATES	ELIZABETH HOFFMAN	LOIS PRESSLEY
DOROTHY BELL	FAYE HOLT	DORIS REECE
DORIS BETTS	HELEN HUNTER	ELSIE MAE SINK
ANNIS BROWN	BERNARDINE HURLEY	VIRGINIA SPRINKLE
VIRGINIA BURTON	CECELIA ISAAC	ELEANOR TANNER
PAULINE COBLE	BARBARA JENNEY	VESTA TROXLER
ADELAIDE CONNOR	BESSIE JOYCE	FLORENCE WAGONER
VIRGINIA CURRY	RUBY KELLER	HELEN WALLER
PEARL EICHELBERGER	ELISE KILPATRICK	MARGARET WALTON
CECELIA FARLOW	ELIZABETH KIVETT	PATSIE WARD
VADALIA FARLOW	CERELDA LACKEY	VEREL WARD
VERA MAE FERREE	EVELYN LINDLEY	MARY FRANCES WARLICK
SIBYL FOWLER	MARJORIE MCFADDEN	IRIS WELCH
RUTH HENDRICKS	ESTHER MIRAN	AGNES LOUISE WILLCOX
	PAULINE PARKER	



# CHRISTIAN ENDEAVOR SOCIETY

## OFFICERS

MARY MARGARET BATES	President
OCCO GIBBS	Vice-President
VIRGINIA CURRY	Secretary
SAMUEL MYERS	Assistant Secretary
PAUL OWEN	Treasurer
ELIZABETH PIRTLE	Assistant Treasurer
AGNES LOUISE WILLCOX	Pianist
INZA HILL	Assistant Pianist

## MEMBERS

JOHN APPLE  
 FORRESTER AUMAN  
 MARY MITCHELL BAITY  
 HELEN BATES  
 MARY MARGARET BATES  
 WILLIAM BARNHOUSE  
 MAXINE BOBBITT  
 BEVERLY BOND  
 VAUGHN BOONE  
 JOHN CAGLE  
 REBECCA COBLE  
 LOUISE COLE  
 HELEN CRAFT  
 VIRGINIA CURRY  
 SHELDON DAWSON  
 GEORGE ELKINS  
 SYBIL FOWLER  
 ULMER FREEMAN  
 EZELL GARLINGTON  
 OCCO GIBBS  
 ROBERT HENDERSON  
 KATHLEEN HEPINSTALL

INZA HILL  
 G. W. HOLMES, III  
 FAYE HOLT  
 HELEN HUNTER  
 BERNARDINE HURLEY  
 BARBARA JENNEY  
 JAMES T. JONES  
 ELISE KILPATRICK  
 BESSIE JOYCE  
 CERELDA LACKEY  
 EVELYN LINDLEY  
 OLGA MARLETTE  
 OWEN LINDLEY  
 J. P. MCKEITHEN  
 SAMUEL MYERS  
 MRS. MABEL T. MILLIKAN  
 ESTHER MIRAN  
 FRANCES MUSE  
 PAUL OWEN  
 NANCY PARHAM  
 ELIZABETH PIRTLE  
 WILLIAM RENNIE

CHARLES E. RIDGE  
 MAX ROGERS  
 WILSON ROGERS  
 VIRGINIA SPRINKLE  
 ELEANOR TANNER  
 SARA FORREST THOMPSON  
 ALSON THOMPSON  
 VESTA TROXLER  
 LESTER VALENTINE  
 FLORENCE WAGONER  
 GILMER WAGONER  
 HELEN WALLER  
 PATSIE WARD  
 VEREL WARD  
 MABEL WARLICK  
 MARY FRANCES WARLICK  
 MRS. C. L. WHITAKER  
 DOROTHY WIGGINS  
 TASKER WILLIAMS  
 AGNES LOUISE WILLCOX  
 FERMAN A. WRIGHT  
 FOY WARFFORD







# MINISTERIAL ASSOCIATION

## OFFICERS

J. EZELL GARLINGTON . . . . . *President*  
WILLIAM C. BARNHOUSE . . . . . *Vice-President*  
CHARLES WHITE . . . . . *Secretary*

## MEMBERS

WILLIAM C. BARNHOUSE	JOHN CAGLE	J. EZELL GARLINGTON
BEVERLY BOND	PAUL HAMILTON	AUBREY WALLEY
ODELL BROWN	ULMER FREEMAN	LEE SPENCER
ALLEN WATSON	WILLIAM RENNIE	
A. C. LOVELACE, JR.	J. P. McKEITHEN	
MARC LOVELACE	CHARLES WHITE	
FERMAN A. WRIGHT	J. SILVESTER HIGGINS	
FRED R. LOVE		
SAMUEL MYERS		
ELISE KILPATRICK		
H. O. LANNING		





# Y. M. C. A.

## OFFICERS

- OCCO GIBBS . . . . . *President*  
 SAMUEL MYERS . . . . . *Vice-President*  
 VAUGHN BOONE . . . . . *Secretary-Treasurer*

## ROLL

- |                      |                     |                  |
|----------------------|---------------------|------------------|
| WILLIAM C. BARNHOUSE | ULMER FREEMAN       | PAUL S. OWEN     |
| JOHN APPLE           | WILLIAM RENNIE      | SHELDON DAWSON   |
| G. W. HOLMES, III    | BEVERLY BOND        | J. J. MCKEITHEN  |
| OWEN LINDLEY         | JOHN CAGLE          | J. P. MCKEITHEN  |
| LESTER VALENTINE     | AUBREY WALLEY       | ROBERT HENDERSON |
| GILMER WAGONER       | A. C. LOVELACE, JR. | J. E. GARLINGTON |
| TASKER WILLIAMS      | MARC LOVELACE       | CHARLES E. RIDGE |
| DANIEL SHARPE        | MAX HILL            | REGINALD HINSHAW |
| WILSON ROGERS        | HAL YOW             | ALTON HARTMAN    |
| ODELL BROWN          | FOY WARFFORD        | FRANK HARTMAN    |
|                      | ERNEST COOK         |                  |
|                      | GEORGE ELKINS       |                  |
|                      | ROBERT JOHNSON      |                  |
|                      | FRANK HEGE          |                  |





# THE BAND

## OFFICERS

JOSEPH R. PAYNE . . . . . *President*  
 ARNOLD BOLEN . . . . . *Vice-President*  
 JAMES MATTOCKS . . . . . *Business Manager*  
 DAVID COOPER . . . . . *Librarian*  
 A. C. LOVELACE, JR. . . . . *Student Director*

## MEMBERS

*Trumpet:* DAVID COOPER, ARNOLD BOLEN,  
 MARJORY MCFADDEN, IRVIN BLACK

*Trombone:* JOSEPH R. PAYNE

*Baritone:* JAMES MATTOCKS

*Alto:* EDWARD STIREWALT

*Bass:* MAX ROGERS

*Saxophone:* WILSON ROGERS, DAVID MCKIN-  
 NON

*Clarinet:* MARC LOVELACE, JAMES CLARK

*Drum:* SHELDON DAWSON, FRED COX, ULMER  
 FREEMAN

*Piccolo:* IRIS WELCH





MISS JANET C. RUSSELL  
Director

## A CAPELLA CHOIR

The A Capella Choir was organized eight years ago and since that time has achieved recognition as being one of the few A Capella Choirs of musical prominence in America. Its membership is limited to thirty-five voices, because of the fact that its extensive travels will not permit a larger number. A limited number of new singers is admitted each year to fill the vacancies of those who have graduated and to replace those whose ability does not measure up to the standard of the group. Examinations are given just as in academic courses and those passing are given three credit hours for the year's work.

Each year the choir makes an extended itinerary into the North or South. These trips are made possible through the efforts of Mr. N. M. Harrison, Promotional Secretary.

The choir is ably directed by Miss Janet C. Russell, recently appointed to the head of the Music Department, who already has made this year's choir one of beauty and finesse.







# A CAPELLA CHOIR

## MEMBERS

### *First Soprano*

JULIA COE  
ELIZABETH HOFFMAN  
MARJORY MCFADDEN  
MARGIE PITTMAN  
MYRTLE POORE  
LOIS PRESSLEY

### *First Tenor*

ULMER FREEMAN  
DOROTHY JONES  
MAX ROGERS  
*Second Tenor*  
BEVERLEY BOND  
A. C. LOVELACE, JR.  
JOSEPH PAYNE

### *Second Soprano*

VIOLET JENKINS  
PAULINE MILLER  
ANN ROSS  
ELSIE MAE SINK  
MARY FRANCES WARLICK

### *First Alto*

ALICE HOFFMAN  
JEAN HUNT  
LUCILLE INGRAM  
MARGUERITE JENKINS  
IRIS WELCH



SHELDON DAWSON  
President

### *Second Alto*

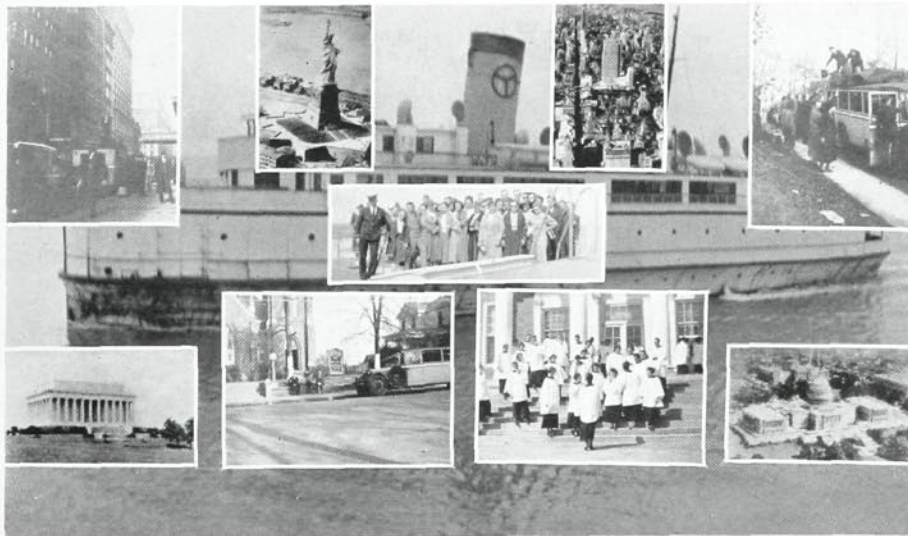
RUTH HENDRICKS  
NELL HOLTON  
PAULINE PARKER  
VESTA TROXLER  
EDITH VANCE

### *First Bass*

SHELDON DAWSON  
MARC LOVELACE  
ROBERT RANKIN  
WILSON ROGERS  
EDWARD STIREWALT

### *Second Bass*

GEORGE ELKINS  
MAX HILL  
OWEN LINDLEY  
J. P. MCKEITHEN  
DAVID MCKINNON





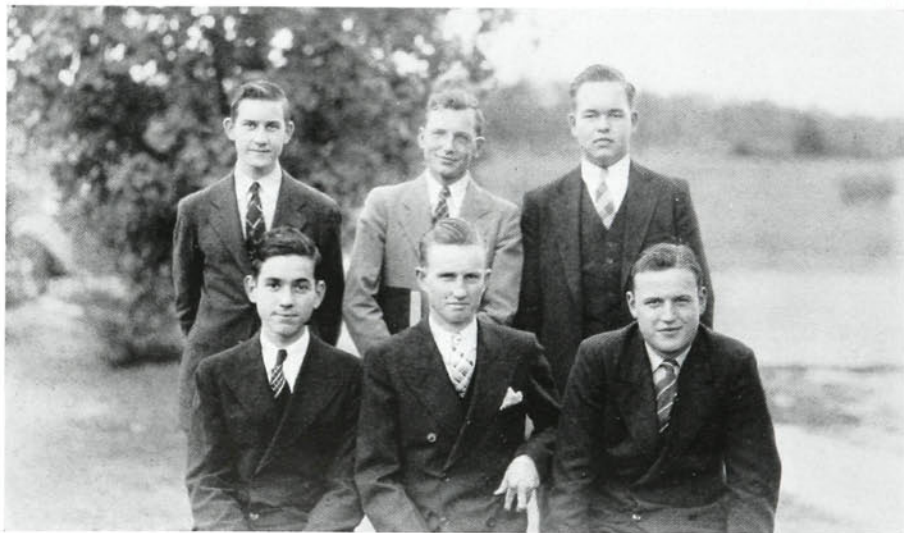
## INTERCOLLEGIATE DEBATERS

This year the debate squad is composed of entirely new men, only one having participated in intercollegiate debates.

The State Peace Oratorical Contest, to be held here May 3, 4, 5, will no doubt find many of the students of Professor Owen's speech class striving to win the cash prizes to be awarded the winners of this event.

At the time this copy goes to the printer, the debate team is all groomed up for the major meet of the year, which is the South Atlantic Forensic Tournament, to be held at Winthrop College, Rock Hill, S. C. The tournament will be the climax of the debate season, drawing teams from all of the South Atlantic states. The query being used this year is "Resolved, That Congress should be empowered to fix minimum wages and maximum hours for industry." In addition to the debates, contests will be held in extemporaneous speaking, impromptu speaking, and oratory. The College will be represented by Marc and A. C. Lovelace, affirmative; G. W. Holmes and Robert Johnson, negative. Each team entering the tournament must have twelve debates.

High Point will enter with high hopes of capturing the title and upholding the fine record of debating that it has always maintained.





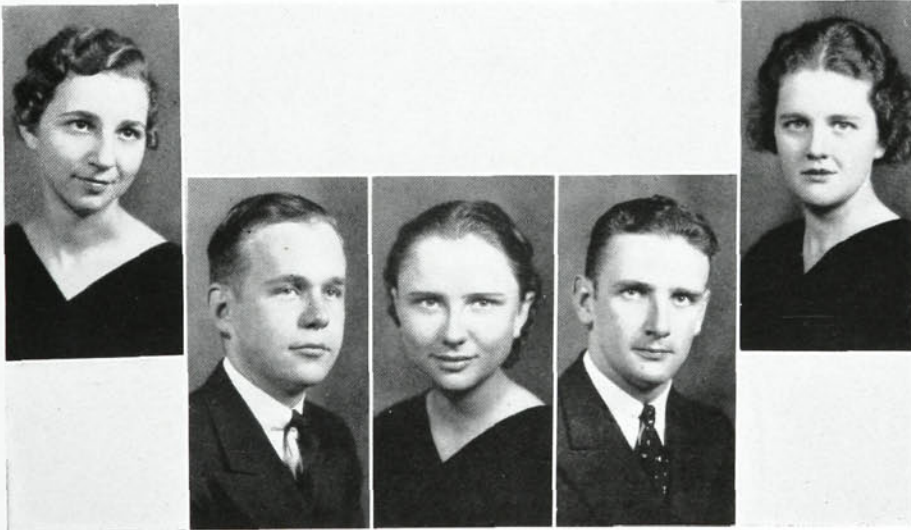
## • WHO'S WHO •

Five Seniors were selected by the faculty this year as representatives in the official Who's Who Among American Colleges and Universities.

From a list of ten nominees, the faculty on first ballot selected the five pictured below. Factors considered in the selection were character, scholarship, campus leadership, and probable contribution to business and society in later life.

The collegiate Who's Who is the only publication of its kind, and it is a recognized counterpart to the famous Who's Who in America.

The college was first represented in this publication last year when A. Lincoln Fulk and Lois Hedgecock were chosen for this honor.



Hill, Austin, Bell, Owen, M. Bates





# B L O C K " H " C L U B

## ROLL



ALTON HARTMAN  
RAY INTRIERI  
C. W. MARTIN  
WAYNE HARRIS

JOHN RUDISILL  
WILLIAM BOOTH  
WILSON ROGERS  
W. C. KOONTZ, JR.

ERASTUS GRIGG  
L. V. SMITH  
EARL BRINKLEY  
LEE SHERRILL





# MODERN PRISCILLA CLUB

## OFFICERS

MARY MARGARET BATES . . . . . *President*  
ELIZABETH PIRTLE . . . . . *Vice-President*  
VIRGINIA CURRY . . . . . *Secretary-Treasurer*

## ROLL

HELEN BATES	IVA MAE FOWLER
MARY MARGARET BATES	RUTH FUTRELLE
REBECCA COBLE	LORENE KOONTZ
ADELAIDE CONNER	OLGA MARLETTE
VIRGINIA CURRY	GLADYS MAXWELL
VADALIA FARLOW	ESTHER MIRAN

VIRGINIA MITCHELL  
ELIZABETH PIRTLE

*Advisor: MISS LOLA BARRY*





## T H E C H E E R L E A D E R S

A cheerleader's job is not an easy one. Creating new yells, reviving old ones, teaching them to the students, and pleading for spirit at the college games demand heavily of their time and energy. The cheerleaders are heroes as well as are our athletes, for they have worked hard in their chosen field of extra-curricular activity.

As head of the cheerleading corps for this year Fay Holt, with the loyal assistance of Peg Jenkins, Virginia Dixon, Odell Gallimore, and David McKinnon, has manifested the desire for true sportsmanship on the court and in the stands that High Point College may be proud of being called "good sports."

It is only fitting that we should give a long "Gr-rrrrrah" for the cheerleaders.



McKinnon, Jenkins, Holt, Dixon, Gallimore





# MARSHALS

OCCO GIBBS  
*Chief*

BERNARDINE HURLEY

ALSON GRAY

JAMES MATTOCKS

HILDRETH GABRIEL

MAX ROGERS

ELIZABETH BAGWELL

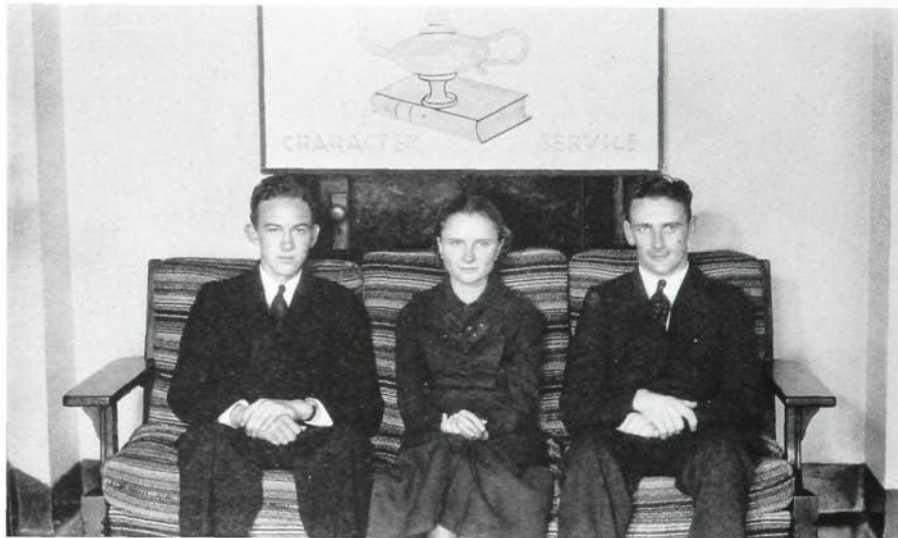




## T H E L I G H T E D L A M P

The Lighted Lamp is an honor society organized in 1935 as a joint movement of the faculty and students to promote higher standards among the student body. The rules for the first tapping were made by a committee from the student government and the faculty, but the organization is now self-sustaining. The members are elected in the second semester of the junior year or of the senior year. Requirements for membership are based on scholarship, character, service, and leadership. Members are chosen from various student activities such as athletics, Christian organizations, student government, publications, literary societies, and social groups.

Charter members of the society are Emma Carr Bivins, Wilbur Hutchins, Lincoln Fulk, Adylene McCollum, and Lois Hedgecock.



Hartman, Bell, Owen



# PAN-HELLENIC COUNCIL

## OFFICERS

ALTON HARTMAN . . . . . *President*  
OCCO GIBBS . . . . . *Vice-President*  
JULIA COE . . . . . *Secretary*

## REPRESENTATIVES

### *Iota Tau Kappa*

OCCO GIBBS  
DR. C. R. HINSHAW

### *Theta Phi*

JULIA COE  
MISS LOUISE ADAMS

### *Sigma Alpha Phi*

GLADYS MAXWELL  
MISS JANET C. RUSSELL

### *Epsilon Eta Phi*

ALTON HARTMAN  
PROF. J. H. MOURANE

### *Delta Alpha Epsilon*

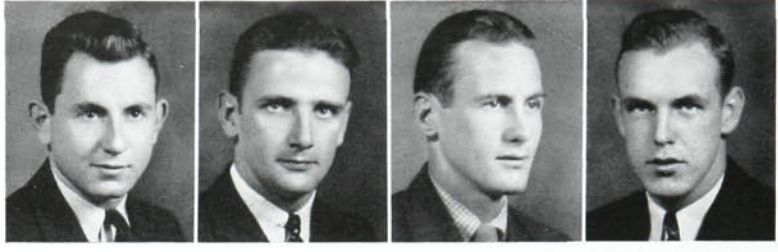
W. W. WEISNER  
PROF. J. H. ALLRED

### *Alpha Theta Psi*

IRIS WELCH  
MRS. ALICE P. WHITE







ROGERS                      OWEN                      RUDISILL                      DAWSON

## IOTA TAU KAPPA

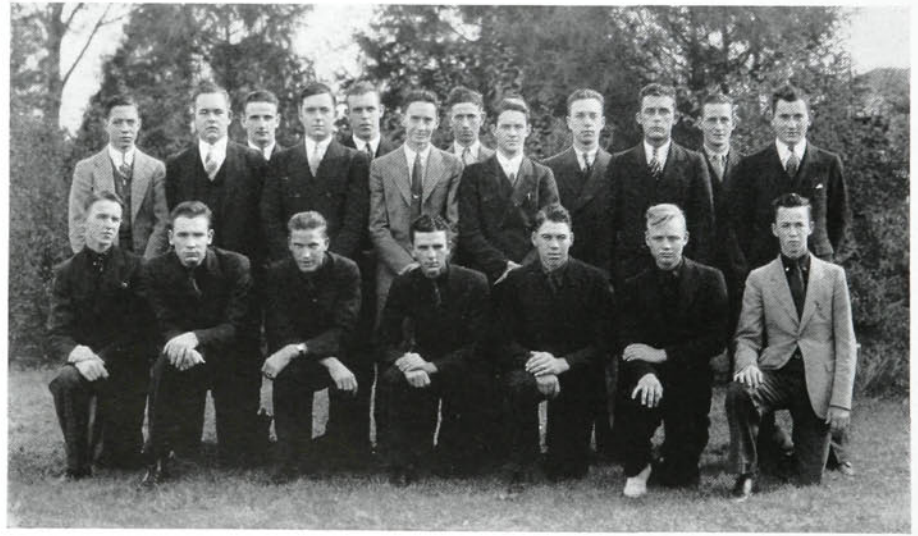


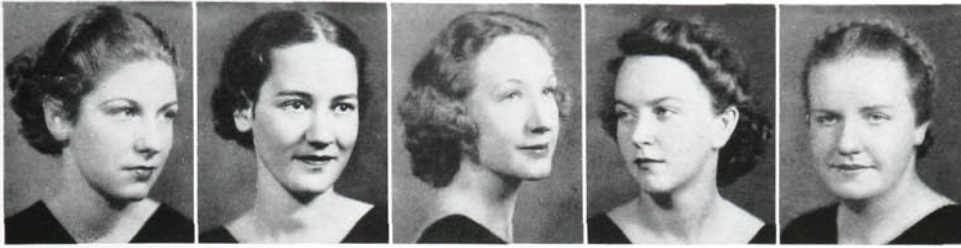
### ROLL

- |                  |                   |
|------------------|-------------------|
| WILSON ROGERS    | G. W. HOLMES, III |
| PAUL OWEN        | EDWARD STIREWALT  |
| SHELDON DAWSON   | PORTER HAUSER     |
| JOHN RUDISILL    | LINDSAY WALKER    |
| LESTER VALENTINE | ROGER PEELER      |
| ELBERT LANE      | ALLEN THACKER     |
| OCCO GIBBS       | GLENN TOWERY      |
| MAX ROGERS       | DANIEL SHARPE     |
| QUENTIN VEACH    | JOHN APPLE        |
|                  | GILMER WAGONER    |

### HONORARY MEMBERS

- |                   |               |                   |
|-------------------|---------------|-------------------|
| DR. C. R. HINSHAW | O. A. KIRKMAN | DR. P. S. KENNETT |
| DR. P. E. LINDLEY |               | DR. H. B. HIATT   |





COE

DIXON

GUETH

HARRIS

JENKINS

## THETA PHI

### ROLL

JULIA COE

SARA HARRIS

MARJORIE ELKINS

HELEN DAMERON

MARGUERITE JENKINS

VIOLET JENKINS

MARGARET DIXON

VIRGINIA DIXON

HELEN RAE HOLTON

FRANCES GUETH



### HONORARY MEMBERS

MISS LOUISE ADAMS

MRS. GLEN MUSE

MRS. N. P. YARBOROUGH

MRS. N. M. HARRISON





# EPSILON ETA PHI

## ROLL

ALLEN AUSTIN  
DAVID COOPER  
ALSON GRAY  
ALTON HARTMAN

WILLIAM HESTER  
RAYMOND INTRIERI  
C. W. MARTIN  
DWIGHT MORGAN

ROBERT RANKIN  
LEE SHERRILL

## HONORARY MEMBERS

W. F. BAILEY  
EDGAR HARTLEY

J. H. MOURANE  
N. P. YARBOROUGH

DAVID T. YOW



SHERRILL  
HARTMAN  
AUSTIN







PIRTLE  
WARLICK  
MAXWELL

# SIGMA ALPHA PHI



### ROLL

GLADYS MAXWELL  
ELIZABETH PIRTLE  
JACQUELINE KINNEY  
NANCY PARHAM

MARY FRANCES WARLICK  
DOROTHY WIGGINS  
FRANCES MUSE  
ANN WATKINS

LUCILLE INGRAM

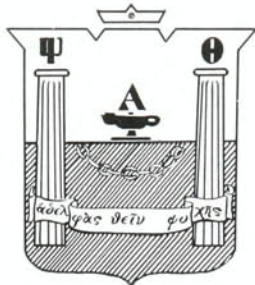
### HONORARY MEMBERS

MISS VERA IDOL

MRS. P. E. LINDLEY

MISS JANET C. RUSSELL





# ALPHA THETA PSI



WELCH

## ROLL

MARGARET AUSTIN	ELIZABETH HOFFMAN
HILDRETH GABRIEL	RUTH LEE
GILBERT PRIMM	
IRIS WELCH	
MARYE NELSON KISER	

## HONORARY MEMBERS

MRS. ALICE P. WHITE	MRS. S. O. PEBBLES
MISS BONNIE ENOCH	MRS. G. I. HUMPHREYS
MRS. M. W. NASH	





WEISNER  
PRESLEY  
DORSETT

# DELTA ALPHA EPSILON



## ROLL

ISHMAEL DORSETT  
M. C. HENDERSON, JR.  
EDWARD GRIMES  
WHITMAN KEARNS

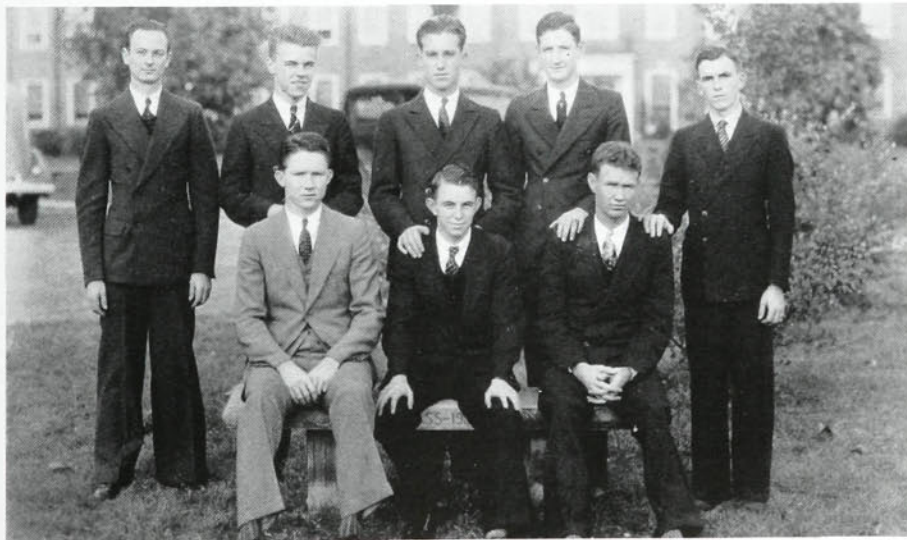
L. V. SMITH  
W. W. WEISNER  
HARVEY PRESSLEY  
JAMES MATTOCKS

## HONORARY MEMBERS

DR. GLENN PERRY  
DR. PAUL R. BOWEN  
PROF. W. H. FORD

PROF. J. H. ALLRED  
C. C. ROBBINS  
HERMAN SMITH

JOHN WHITESELL  
DR. P. B. DAVIS  
DR. W. L. JACKSON







REV. J. C. MADISON  
*President*

## ALUMNI ASSOCIATION

### OFFICERS

REV. J. C. MADISON . . . . .	<i>President</i>
LUTHER MEDLIN . . . . .	<i>Vice-President</i>
MRS. M. L. PATRICK . . . . .	<i>Secretary</i>
INA McADAMS . . . . .	<i>Treasurer</i>
ELDA CLARK . . . . .	<i>Treasurer of Alumni Fund</i>

The fourth annual Homecoming Day will be held this year on May 29, the Saturday of commencement. At a meeting of the alumni association in October, it was definitely decided that this date be set for this year, instead of the fall date, and that it be made an annual event in the future. Arrangements are complete for "one grand day," according to President Madison. The Association will reorganize at the May meeting and their plans for a "bigger and better High Point College" will be known then.



# RADIO *ZENITH* HISTORY

•  
COMMANDER EUGENE F. McDONALD, JR.,  
*President, Zenith Radio Corporation*  
•

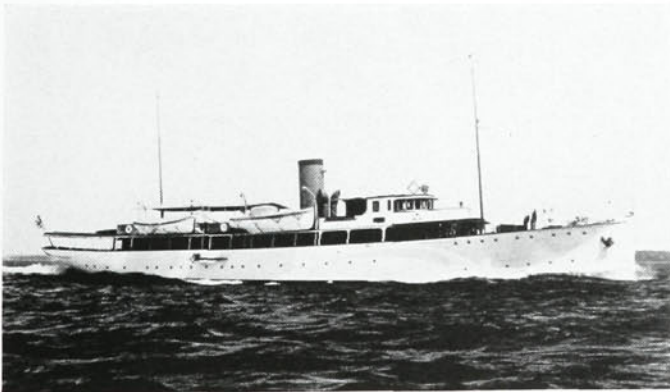


Radio came to America in 1899, when Marconi gave demonstrations to the United States Navy. Radio first spanned the Atlantic in 1901, when Marconi received signals from Poldhu, Cornwall, England, at St. Johns, Newfoundland.

Another pioneer in the field of radio is Eugene F. McDonald, Jr., the man now known a dozen years as Commander McDonald of radio and exploration fame. Leaving Syracuse University he migrated to Chicago in 1910 where he became interested in the developments of radio. Later he bought out a little laboratory that owned station Z-N. It was from the call letters of this station that he got the name for ZENITH radio.

McDonald is an adventurer and explorer by nature and thinks out his own problems on water. He lives on a 185-foot yacht, the Mizpah, which is a veritable floating laboratory. When it is desired to operate experimental radio sets under certain conditions, the entire floating laboratory is merely moved to a spot which affords certain obstacles and conditions. While in command of the steamship Peary, Commander McDonald established two-way ship communication for the first time at Etah, 11 degrees from the North Pole.

Today, whether on land, in automobile, in the air, or on sea, radio accompanies us, bringing with it culture and cheer. Radio is now the greatest medium of mass communication.

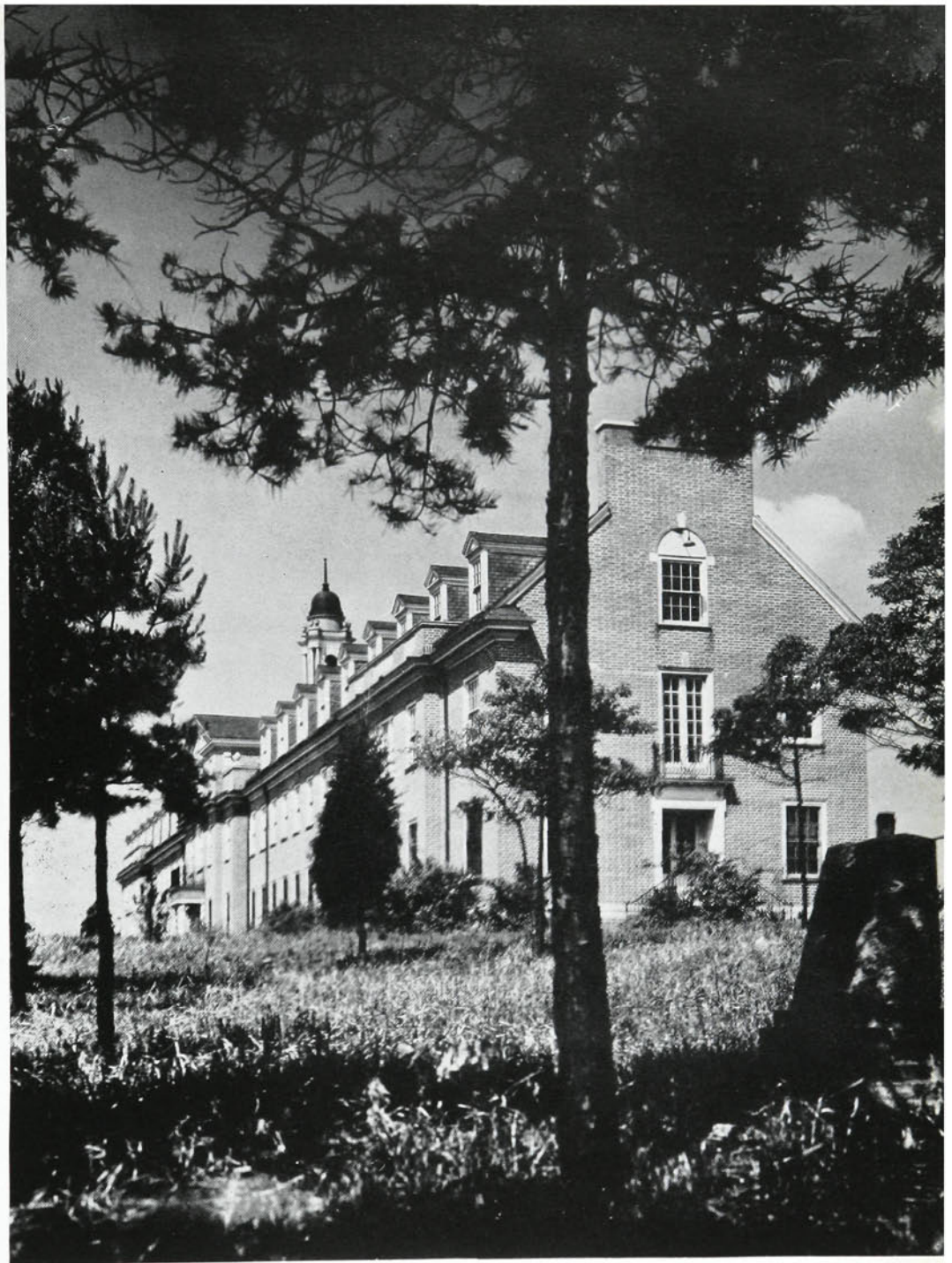


•  
The yacht "Mizpah,"  
Home of  
Commander McDonald  
•



RECEPTION HALL, NBC STUDIOS, RADIO CITY





**F E A T U R E S ●**

# H I G H P O I N T

## A T

## S I G H T S

## H I G H L I G H T S

## H I G H L I G H T S

## H I G H L I G H T S



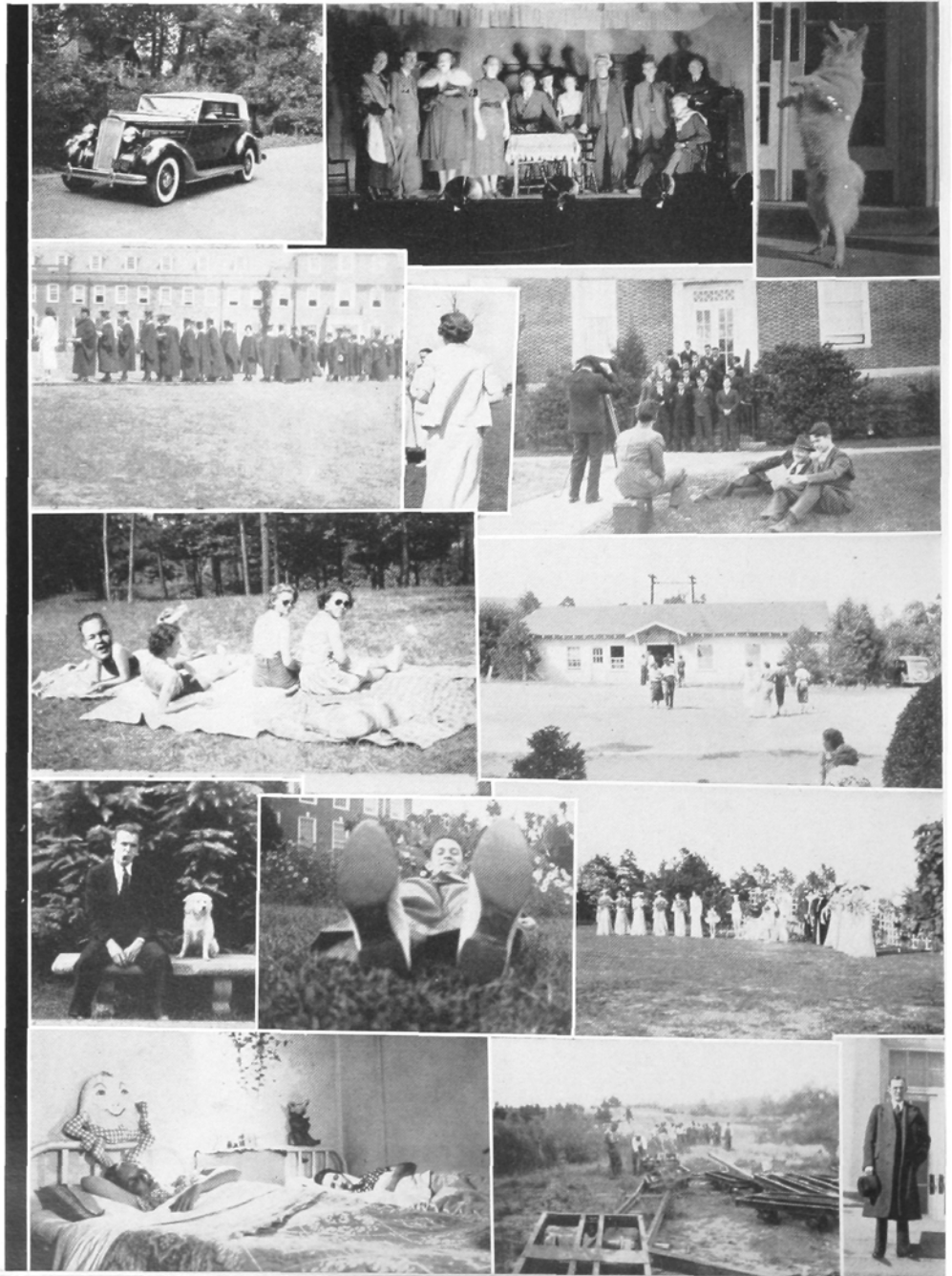
Dr. Bowen and family  
Shadows of "Three Live Ghosts"  
Hi-Po doing tricks

The march to fame and fortune  
A view from the rear  
The photographer takes time-out

What're you doing there?  
"For between class refreshments"

A thing of the past  
Gibb's platform  
Nikanthan's May Day—1936

The Cameraman invades  
Work begins on the Athletic field  
Congressman Umstead visits the  
campus



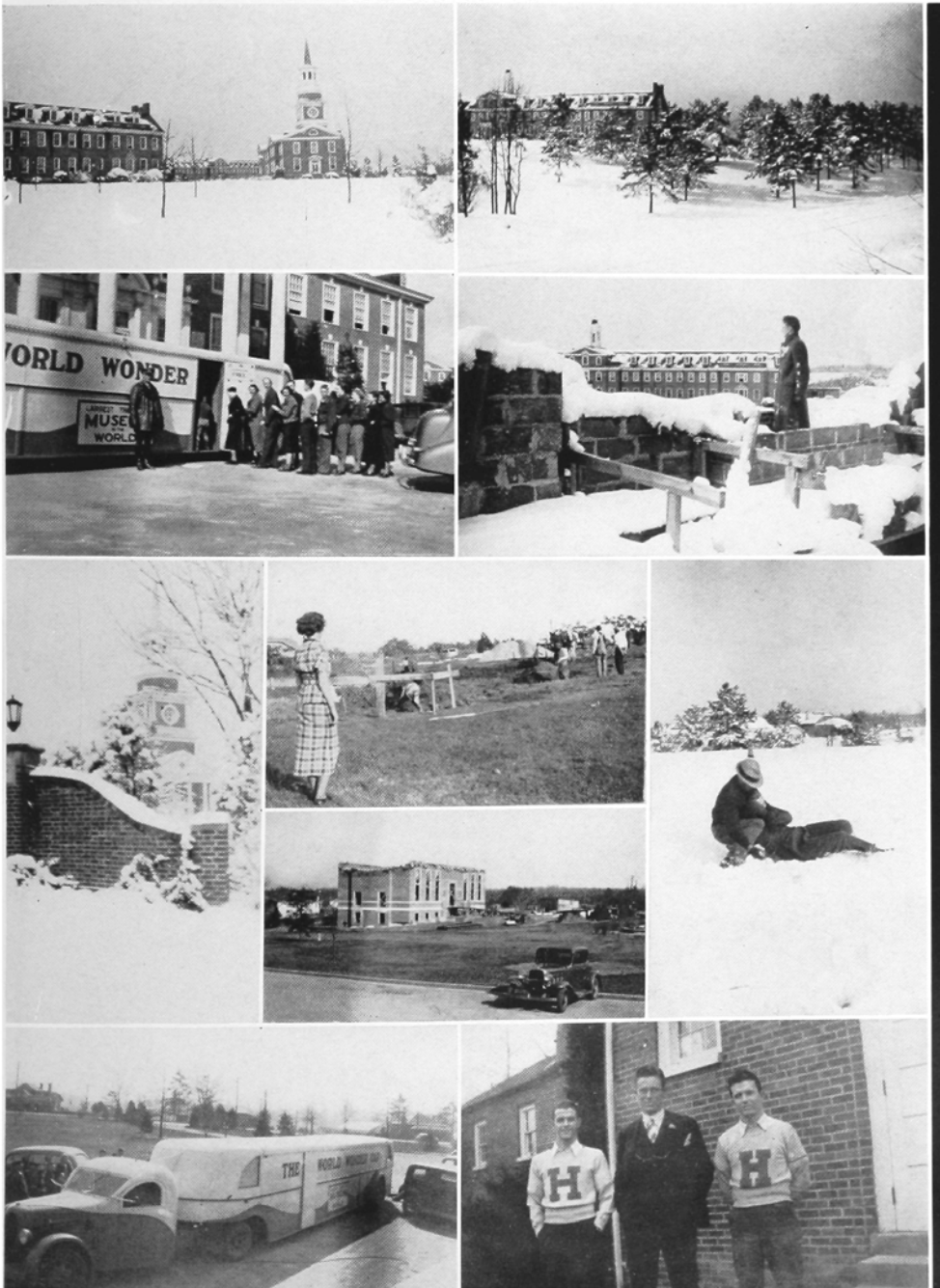


# A R O U N D

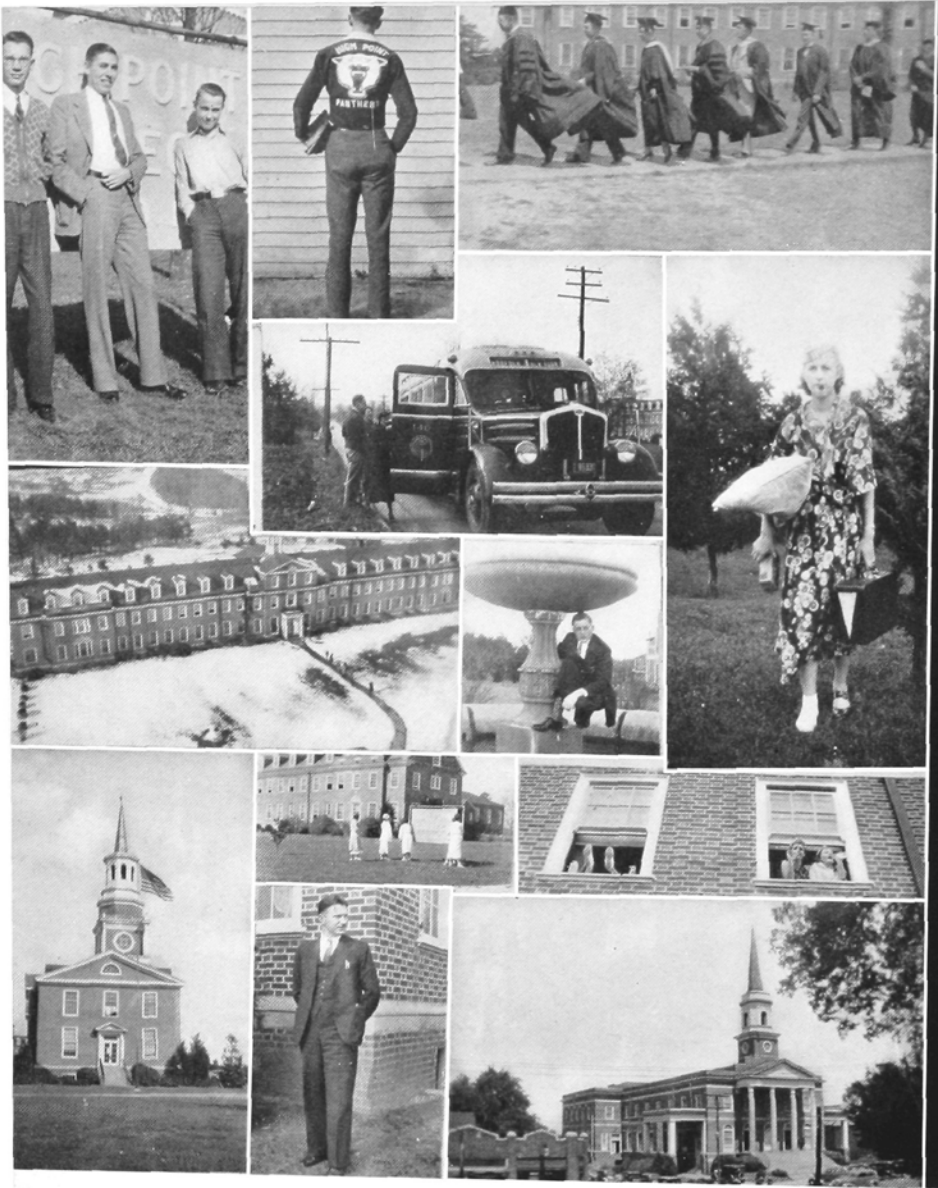
# T H E C A M P U S ●

Scene from the thumb terminal  
 Picturesque Woman's Hall  
 Of course it's free!  
 Master of all he surveys  
 A study in white

A student looks on—the first day  
 The library nears completion  
 Here's where I get you!  
 The Wonder Car visits the campus  
 A big league get-together







The ladies man and pals  
 "Bushy" poses  
 They lead the procession  
 From the tower on an icy day  
 Company for the week-end  
 Barnhouse of Ohio  
 En route to class

Spring fashions  
 More initiation fun for the Sophs  
 The tower among the clouds  
 Le Professeur  
 You'll find most of us here on Sun-  
 day morning

●  
 S  
 U  
 P  
 P  
 O  
 S  
 I  
 T  
 I  
 O  
 N  
 S  
 ●

C O V E R I N G

# W I T H T H E

# C A N D I D C A M E R A

On a perfectly clear day!  
 That Dawson lad again  
 Contentment  
 Part of the College  
 Johnnie  
 Another interior view  
 "Drink to me only—"

Sophomore's prey  
 Those first weeks of school  
 A frosh does his duty  
 Campus personalities  
 E. D.  
 Added attraction  
 Another campus visitor



BEST LOOKING

JULIA COE  
GEORGE ARMFIELD

MOST INTELLECTUAL

DOROTHY BELL  
W. W. WEISNER

BEST SPORTS

ALTON HARTMAN  
SARA HARRIS

MOST FRIENDLY

SHELDON DAWSON  
GLADYS MAXWELL



SENIOR CLASS



MOST ATHLETIC  
LEE SHERRILL  
MARGARET DIXON

MOST POPULAR  
JULIA COB  
ALLEN AUSTIN

MOST ORIGINAL  
CHARLES E. RIDGE  
DOROTHY BELL

BEST ALL-AROUND  
MARGUERITE JENKINS  
PAUL OWEN



# SUPERLATIVES

# THE MARCH OF TIME

- SEPTEMBER 15—Upperclassmen register with the freshmen following two days later. First chapel is on Friday. Miss Barry, Miss Russell, Mrs. Millikan are new additions to faculty.
- 30—Lee Sherrill named captain of soccer team. Sophomores institute reign of terror over Freshmen. Pajama parade down Main Street is climax to evening performances. 'Twas the night the yearlings will never forget.  
WPA grants final approval for completion of the Athletic Field.
- OCTOBER 2—Annual faculty reception is given for old and new students. Magician scheduled for program vanishes. Dean Lindley is master of ceremonies.
- 6—Work gets underway on stadium, WPA to furnish \$25,000.  
Ray Intrieri named Junior Class prexy, succeeding Frank Niernsee, who did not return to school.
- 7—J. Ralto Farlow named to fill vacancy in accounting department.
- 8—Broadus Culler, '36, named Soccer coach.
- 9—Senior Class starts move to pave driveways.
- 10—Fall tennis tournament gets underway with 19 entrants.  
Rush week for Greek clubs gets underway.
- 19—Fay Holt is elected to head cheerleaders. M. Jenkins, V. Dixon, Odell Gallimore, and David McKinnon named assistants by popular vote of student body.  
Joseph Payne chosen to head the Band.
- 21—Annual reception for faculty and students given at First M. P. Church.
- 24—Nikanthans agree to give over May Day celebration for one joint society day.
- 26—Hal Yow named to head Freshmen; Paul Owen to new Commerce Club.
- 28—Weisner attends collegiate press meet in Charlotte. Convention selects High Point College for spring session.
- NOVEMBER 2—Construction is started on Wrenn Memorial Library building.  
Faculty selects M. M. Bates, Bell, Austin, Owen, and Hill for collegiate Who's Who publication.
- 3—Individual pictures are made for ZENITH. Group pictures follow on Wednesday. The faculty gives over class periods to assist staff and photographer. Bouquets to them!
- 13—De Costa Ferrari Company presents first in a series of four lyceum programs.  
Senior Class selects its superlatives for ZENITH.
- 16—Gibbs is named to head marshals. Gabriel, Gray, Hurley, Rogers, Mattocks, and Bagwell will assist.
- 20—Cutler-Griffin company presents second lyceum number of the year.
- 21—Samuel Myers and J. E. Garlington attend ministerial meet at Davidson College.
- 24—Faculty and students clash in volleyball game sponsored by Woman's Athletic Association.
- DECEMBER 2—Plans for one BIG society day are cancelled.  
Elwood T. Baily speaks at third lyceum program.  
Purple Kittens invade Cleveland County on annual tour.  
Dr. W. A. Lambeth and B. K. Milloway are elected to board of trustees.
- 7—Martin elected captain of Basketball squad. Gibbs to be manager for 1936-37 season.
- 11—Senior Class presents "Three Live Ghosts." Proceeds go for driveway fund.

# THE MARCH OF TIME

- 14—Dr. Hinshaw is elected president of North State Conference.  
 15—Sophomore co-eds win volleyball crown.  
 17—Pre-holiday party sponsored by Student Council. Twins for the Yarboroughs' Christmas.  
 18—Christmas holidays begin. Everybody gets the Christmas spirit and goes home in a happy mood to return January 4.
- JANUARY**
- 5—Classes begin. Students return from pleasant home firesides to prepare for exams just a few weeks later.  
 11—Armfield wins final ping-pong game from Rankin to capture championship.  
 13—Charles White elected president of ministers, Wilson Rogers for Commerce Club, Sheldon Dawson for Akrothinians, Charles E. Ridge, Thaleans.  
 23—Panthers defeat Elon 30-21.  
 25—Examinations begin. Sherrill, Thompson, and Higgins are graduated.
- FEBRUARY**
- 2—New Semester begins.  
 Ray Intrieri, basketball guard, transfers to school in Pennsylvania.  
 Miss Janet C. Russell gives piano recital before large audience in College auditorium.  
 3—Debate squad makes initial appearance of season by meeting Wake Forest in a non-decision contest.  
 4—T. W. Sprinkle, attorney-at-law, is named to teach commercial law course for semester.  
 8—Alson Gray selected Junior Class prexy to succeed Ray Intrieri.  
 12—World Wonder Car makes its appearance on the campus carrying the largest traveling museum in the world. Students and faculty are admitted free through the courtesy of Harlees.  
 13—Panthers lose to Elon after a hard-fought battle requiring two extra periods. The estimated number of spectators is 1,200, the largest crowd ever to witness a basketball game at the College.  
 17—College is host to Carolina's A. A. U. basketball tournament played in Harrison Gymnasium. Championships were won by Unique, Enka, National Business College, and Triangle.  
 24—Central Piedmont high school basketball tournament begins in Harrison Gymnasium, sponsored by the Athletic Association of the College. Over 30 high schools were represented in this tournament which was won by Fairgrove boys and Jr. O. U. A. M. Home girls.  
 28—High Point Panthers lose third battle of year to Lenoir-Rhyne Bears.  
 Last of manuscript copy leaves editor's desk.
- MARCH**
- 19—Members for Lighted Lamp, the College honor society are tapped by current members in chapel ceremony.  
 25—Easter holidays begin to last for a period of five days.  
 30—Students return from Easter holidays. The Juniors get ready for the Junior-Senior banquet; the choir to invade the North and New York City.
- APRIL**
- 2—Junior-Senior Banquet held at Sheraton Hotel at 8:00 P.M.  
 Senior Investiture Ceremony. Truly a red letter day for every senior.  
 16—A Capella Choir leaves on its annual trip into the northern states.



# ROLL OF STUDENTS

John Albertson.....	114 Oakwood Ct., High Point, N. C.	Bickett Ellington.....	Box 1897, High Point, N. C.
John Apple.....	Route 2, Reidsville, N. C.	Gladys Ellington.....	High Point, N. C.
George Armfield.....	109 Roland Pk., High Point, N. C.	Cecelia Farlow.....	Sophia, N. C.
Forrester Auman.....	Route 1, Seagrove, N. C.	Vadalia Farlow.....	Sophia, N. C.
Allen Austin.....	301 Steele St., High Point, N. C.	Vera Mae Fetree.....	Route 3, High Point, N. C.
Margaret Austin.....	Wiltshire Blvd., High Point, N. C.	Jack Fitzgerald.....	Linwood, N. C.
Virginia Burton.....	Route 3, High Point, N. C.	Kermit Frazier.....	420 N. Elm St., Greensboro, N. C.
Elizabeth Bagwell.....	405 Breckenridge, Henderson, N. C.	Ulmer Freeman.....	Clara, N. C.
Bernard Owen Bales.....	Box 584, High Point, N. C.	Boyd Fouts.....	Route 2, Thomasville, N. C.
Mary Mitchell Bairy.....	350 Southall St., Henderson, N. C.	Iva Mae Fowler.....	Route 1, Thomasville, N. C.
Margaret Brown Bailey.....	1221 N. Main St., High Point, N. C.	Sibyl Fowler.....	Pinnacle, N. C.
Ruth Briles.....	1103 N. Main St., High Point, N. C.	Ruth Futrelle.....	Box 250, Greensboro, N. C.
James Brandon.....	908 Montlieu Ave., High Point, N. C.	J. Ezell Garlington.....	Pollock, La.
Howard Bradner.....	205 Thurston St., High Point, N. C.	Hildreth Gabriel.....	511 Woodrow Ave., High Point, N. C.
Nevil Bowman.....	918 Redding St., High Point, N. C.	Odell Gallimore.....	503 E. Green St., High Point, N. C.
William Booth.....	Oxford, N. C.	H. B. Garlington.....	Pollock, La.
Vaughn Boone.....	Route 1, Graham, N. C.	James Gianoulis.....	302 Centennial Ave., High Point, N. C.
Virginia Boyles.....	Thomasville, N. C.	Occo Gibbs.....	Gibsonville, N. C.
Beverly Bond.....	300 Second East St., Haynesville, La.	Jack Gibson.....	408 East Washington St., High Point, N. C.
Arthur Bookout, Jr.....	1406 Northfield, Greensboro, N. C.	Joe Gray.....	308 Lindsay St., High Point, N. C.
Maxine Bobbitt.....	Box 496, Henderson, N. C.	Alson Gray.....	308 Lindsay St., High Point, N. C.
Helen Blackburn.....	Box 264, Greensboro, N. C.	Edward Grimes.....	Williamston, N. C.
Reid Black.....	306 West Second St., Lexington, N. C.	Erastus Grigg.....	Route 5, Shelby, N. C.
Irvin Black.....	411 Whiteoak St., High Point, N. C.	Frances Gueth.....	237 Montlieu Ave., High Point, N. C.
Doris Betts.....	306 Elm St., Asheboro, N. C.	Paul Hamilton.....	Troy, N. C.
Emery Bencini.....	W. Lexington St. Ext., High Point, N. C.	Hugh Hampton.....	Route 3, Union Mills, N. C.
Dorothy Bell.....	Southport, N. C.	Betty Hardin.....	High Point, N. C.
Mary Margaret Bates.....	Brown Summit, N. C.	Sara Harris.....	Summerfield, N. C.
Helen Bates.....	Brown Summit, N. C.	Wayne Harris.....	Rutherfordton, N. C.
William C. Barnhouse.....	Belle Valley, Ohio	Alton Hartman.....	Advance, N. C.
Earl Brinkley.....	Route 1, Thomasville, N. C.	Frank Hartman.....	Advance, N. C.
Holland Brinkley.....	Route 4, Lexington, N. C.	Charles Harville.....	636 Colonial Drive, High Point, N. C.
Annis Brown.....	Route 2, Trinity, N. C.	Allen Hanson.....	Pinnacle, N. C.
Odell Brown.....	Route 1, High Point, N. C.	John Hauss.....	Park Ave., Thomasville, N. C.
John Cagle.....	Eldorado, N. C.	Franklin Hege.....	312 Sixth Ave., Lexington, N. C.
Mary Carraway.....	607 W. Farris Ave., High Point, N. C.	J. H. Hicks, Jr.....	1015 Smith St., High Point, N. C.
Herbert Lewis Clien.....	701 Montlieu Ave., High Point, N. C.	M. C. Henderson, Jr.....	Asheboro, N. C.
James Clark.....	111 Oakwood Ct., High Point, N. C.	Robert Henderson.....	Melville St., Graham, N. C.
Clyde Clodfelter.....	Wallburg, N. C.	Ruth Hendricks.....	Route 3, High Point, N. C.
Eleanor Coble.....	Route 4, Greensboro, N. C.	Kathleen Hepinstall.....	Littleton, N. C.
Rebecca Coble.....	Haw River, N. C.	William Hester.....	220 N. Cedar St., Greensboro, N. C.
Julia Coe.....	219 Hillcrest Ave., High Point, N. C.	Silvester Higgins.....	Guilford College, N. C.
Louise Cole.....	Wise, N. C.	Inza Hill.....	Denton, N. C.
Annette Coltrane.....	306 Woodrow St., High Point, N. C.	Max Hill.....	Denton, N. C.
Adelaide Conner.....	722 E. Greene St., Danville, Va.	Thomas Hilliard.....	Thomasville, N. C.
Ernest Cook.....	Route 5, Monroe, N. C.	Joseph Hilliard.....	Thomasville, N. C.
David Cooper.....	417 Gatewood Ave., High Point, N. C.	Reginald Hinshaw, Jr.....	223 Montlieu Ave., High Point, N. C.
Helen Craft.....	Cherryville, N. C.	Elizabeth Hoffman.....	507 White Oak St., High Point, N. C.
George Craver.....	116 Varnum, N. W., Washington, D. C.	Alice Hoffman.....	507 White Oak St., High Point, N. C.
Robert Craver.....	614 Colonial Dr., High Point, N. C.	Annie Faye Holt.....	Route 2, Graham, N. C.
Mary Miller Crawford.....	334 East Green St., High Point, N. C.	G. W. Holmes, III.....	Route 1, Graham, N. C.
Hazel Crutchfield.....	829 N. Main St., High Point, N. C.	Harold Holton.....	Route 3, High Point, N. C.
Ethel Culler.....	High Point, N. C.	Helen Rae Holton.....	High Point, N. C.
Thelma Culler.....	904 Sixth St., High Point, N. C.	Nell Holton.....	High Point, N. C.
Dorothy Cummings.....	313 S. Hamilton St., High Point, N. C.	Claude Howell.....	Norwood, N. C.
Virginia Curry.....	Pleasant Hill, N. C.	Ralph Hughes.....	Route 1, Ware Shoals, S. C.
Fred Cox, Jr.....	6 Vance Circle, Lexington, N. C.	Nell Marie Humphreys.....	College Drive, High Point, N. C.
Helen Dameron.....	Liberty, N. C.	George Emory Humphreys.....	College Drive, High Point, N. C.
Elizabeth Darr.....	Thomasville, N. C.	Jean Hunt.....	Ferndale Drive, High Point, N. C.
Ruby Darr.....	Box 408, Thomasville, N. C.	Helen Hunter.....	Arcola, N. C.
Dorothy Davis.....	204 Boulevard, High Point, N. C.	Bernardine Hurley.....	Troy, N. C.
Sheldon Dawson.....	406 Smith Street, Salisbury, Md.	Richard Hubbard.....	607 W. Lexington Ave., High Point, N. C.
Margaret Dixon.....	1006 Lindsay St., High Point, N. C.	Olive Hutchins.....	1100 Campbell St., High Point, N. C.
Virginia Dixon.....	1006 Lindsay St., High Point, N. C.	Betty Idol.....	756 N. Main St., High Point, N. C.
Ishmael Dorsett.....	417 Julian Ave., Thomasville, N. C.	Martha Idol.....	756 N. Main St., High Point, N. C.
Clifford Dell.....	207 E. Hendrix St., Greensboro, N. C.	Lucille Ingram.....	504 Jones St., High Point, N. C.
James Durland.....	521 Parkway, High Point, N. C.	Ray Intrieri.....	303 German St., Earle, Penn.
Pearl Eichelberger.....	712 Montlieu Ave., High Point, N. C.	Cecelia Isaac.....	436 Westminster Ave., Elizabeth, N. J.
George Elkins.....	Liberty, N. C.	Charles Jarrell.....	High Point, N. C.
Marjorie Elkins.....	Liberty, N. C.	Marguerite Jenkins.....	Frost Ave., Frostburg, Md.

# ROLL OF STUDENTS

Violet Jenkins	Frost Ave., Frostburg, Md.	Harvey Pressley	402 Vine St., High Point, N. C.
Barbara Jenney	146 Charles St., Torrington, Conn.	Gilbert Primm	601 Salem St., Thomasville, N. C.
Mrs. G. A. Johnson	615 W. Lexington Ave., High Point, N. C.	Charles E. Ridge	Lexington, N. C.
Frank Johnson	High Point, N. C.	Robert Rankin	102 Church St., High Point, N. C.
Bessie Joyce	Sandy Ridge, N. C.	Horace Rhinehart	Lexington, N. C.
Robert Johnson	Denton, N. C.	Doris Reece	Route 5, Winston-Salem, N. C.
Alice Louise Jones	Randolph Ext., Thomasville, N. C.	William Rennie	13 Norgate Rd., Methuen, Mass.
Dorothy Jones	905 E. Circle Drive, High Point, N. C.	Max Rogers	Burlington, N. C.
James Jones	Hillsboro St., Hillsboro, N. C.	Wilson Rogers	Burlington, N. C.
Lorene Koontz	2928 Patterson Ave., Winston-Salem, N. C.	Anne Ross	215 Nainman Ave., Asheboro, N. C.
W. C. Koontz, Jr.	309 Fourth St., High Point, N. C.	John Rudisill	301 W. Congress St., Lincolnton, N. C.
Esther Kivett	1002 Sherrod Ave., High Point, N. C.	James Shannon	Polo Club, Winston-Salem, N. C.
Hazel Kiser	718 Morris St., High Point, N. C.	Richard Setzer	501 Woodrow Ave., High Point, N. C.
Marye Nelson Kiser	718 Morris St., High Point, N. C.	Edward Stirewalt	703 E. Lexington Ave., High Point, N. C.
Jacqueline Kinney	117 Redd St., Reidsville, N. C.	Virginia Sprinkle	Tobaccoville, N. C.
Elise Kilpatrick	Haynesville, La.	Daniel Sharpe	Route 4, Greensboro, N. C.
Vance Kester	Greensboro Rd., High Point, N. C.	Lee Sherril	Statesville, N. C.
Whitman Kearns	Farmer, N. C.	William Shields	329 Louise Ave., High Point, N. C.
Pauline Kennett	College Drive, High Point, N. C.	Ruth Shoaf	Route 5, Winston-Salem, N. C.
Ruby Keller	Route 3, High Point, N. C.	Richard Short	606 N. Main St., High Point, N. C.
Cerelda Lackey	Fallston, N. C.	L. V. Smith	High Point, N. C.
Tom Lamar	214 Kelly St., High Point, N. C.	Elsie Mae Sink	601 Sink St., High Point, N. C.
Frances Lambeth	202 Hillcrest Drive, High Point, N. C.	Margaret Sink	601 Sink St., High Point, N. C.
Elbert Lane	Pinnacle, N. C.	Lee Spencer, Jr.	1410 King St., High Point, N. C.
H. O. Lanning	Lexington, N. C.	John Stanley	1103 Lindsay St., High Point, N. C.
Ruth Lee	307 Denny St., High Point, N. C.	Henry Surratt	1017 Sherrod Ave., High Point, N. C.
Charles Lingo	Dover, Del.	Eleanor Tanner	1919 Carter St., Danville, Va.
Evelyn Lindley	Snow Camp, N. C.	Banks Thayer	1118 Montlieu Ave., High Point, N. C.
Owen Lindley	Route 1, Graham, N. C.	Allen Thacker	Route 1, High Point, N. C.
William Locke	Route 2, Enfield, N. C.	Ruth Merelyn Thompson	5 E. Main St., Thomasville, N. C.
Fred R. Love	Box 112, Thomasville, N. C.	Sara Forrest Thompson	5 E. Main St., Thomasville, N. C.
Marc Lovelace	108 S. Millen St., Gastonia, N. C.	Robert Thompson	225 Thurston St., High Point, N. C.
A. C. Lovelace, Jr.	108 S. Millen St., Gastonia, N. C.	Alson Thompson	Roanoke Rapids, N. C.
Marjory McFadden	Waverly, Kans.	Evelyn Turner	Lincolnton, N. C.
David McKinnen	109 Welch St., High Point, N. C.	Hazel Tucker	217 Edgedale, High Point, N. C.
John McKeithen	Grayson, La.	Vesta Troxler	Route 4, Burlington, N. C.
J. P. McKeithen	Grayson, La.	Glen Towery	Route 4, Shelby, N. C.
William McKinney	110 Salem St., High Point, N. C.	Lester Valentine	Route 3, Winston-Salem, N. C.
Olga Marlette	Graham, N. C.	Edith Vance	505 Montlieu Ave., High Point, N. C.
Gladys Maxwell	1003 Fourth Ave., Hendersonville, N. C.	Quentin Veach	Route 1, Thomasville, N. C.
Dwight Morgan	Jackson Creek, N. C.	Agnes Louise Wilcox	212 Cedar St., Greensboro, N. C.
James Morgan	1717 English St., High Point, N. C.	Helen Waller	Route 1, Deep Run, N. C.
Mary Virginia Mitchell	800 Carrick Ave., High Point, N. C.	Aubrey Walley	Clara, Miss.
Esther Miran	83 Belleview Ave., Torrington, Conn.	Lindsay Walker	Route 3, Winston-Salem, N. C.
Pauline Miller	West Side Sta., High Point, N. C.	Margaret Walton	109 S. Cox St., Asheboro, N. C.
Billy Meredith	Route 1, Trinity, N. C.	Florence Wagoner	Brown Summit, N. C.
James Mattocks	805 Morris St., High Point, N. C.	Gilmer Wagoner	Brown Summit, N. C.
C. W. Martin	Polkton, N. C.	Patsie Ward	Madison, N. C.
Olivia Martin	Route 2, Trinity, N. C.	Foy Wofford	Route 6, Lexington, N. C.
Frances Mann	1206 Johnson St., High Point, N. C.	Mary Frances Warlick	Lawndale, N. C.
Danease Manley	527 Cable St., High Point, N. C.	Mabel Warlick	Belwood, N. C.
Frances Muse	Carthage, N. C.	Ann Watkins	717 W. Farriss St., High Point, N. C.
Ruth Myers	235 Boulevard, High Point, N. C.	Allen Watson	Morven, N. C.
Sara Marie Neese	Route 5, Winston-Salem, N. C.	Josephine Weant	Route 3, High Point, N. C.
Byron Nifong	Route 5, Winston-Salem, N. C.	George Webster	531 Parkway, High Point, N. C.
Charles Ostwald	122 South Orange Ave., South Orange, N. J.	Iris Welch	1505 N. Main St., High Point, N. C.
Paul S. Owen	Pinnacle, N. C.	S. J. Welborn	Route 1, Thomasville, N. C.
Jack Palmer, Jr.	116 Salem St., Thomasville, N. C.	Edgar S. Welborn	Route 1, Thomasville, N. C.
Nancy Parham	Route 2, Henderson, N. C.	Raymond Welborn	106 Oakwood Ct., High Point, N. C.
Pauline Parker	Richmond, Va.	Donald Wehry	1109 Orlanda St., High Point, N. C.
James Parsons	High Point, N. C.	William W. Weisner	515 Liddell St., Charlotte, N. C.
Mary Evelyn Payne	Route 2, High Point, N. C.	Charles White	1208 Shelton St., High Point, N. C.
Joseph Payne	Route 2, High Point, N. C.	Dorothy Wiggins	412 N. Garnett St., Henderson, N. C.
McCrary Peace	Route 2, Trinity, N. C.	Tasker Williams	Essex, N. C.
Roger Peeler	Belwood, N. C.	Ferman A. Wright	Route 4, Lawndale, N. C.
Elizabeth Pirtle	Route 1, Montgomery, Ala.	Arthur York	635 Colonial Drive, High Point, N. C.
Marjorie Pittman	Whitakers, N. C.	Raymond York	316 Louise St., High Point, N. C.
Myrtle Poore	322 W. Russell St., High Point, N. C.	Dezree Younts	Trinity, N. C.
DeLois Pressley	402 Vine St., High Point, N. C.	Hal Yow	Gibsonville, N. C.

HIGH POINT  
FURNITURE CO.

*Manufacturers of*  
BED ROOM FURNITURE



Phone 2308

*Established 1888*

HIGH POINT, NORTH CAROLINA

FOR QUALITY DAIRY  
PRODUCTS—

*Lindale*  
DAIRY CORP.

West Lexington Avenue

HIGH POINT, N. C.

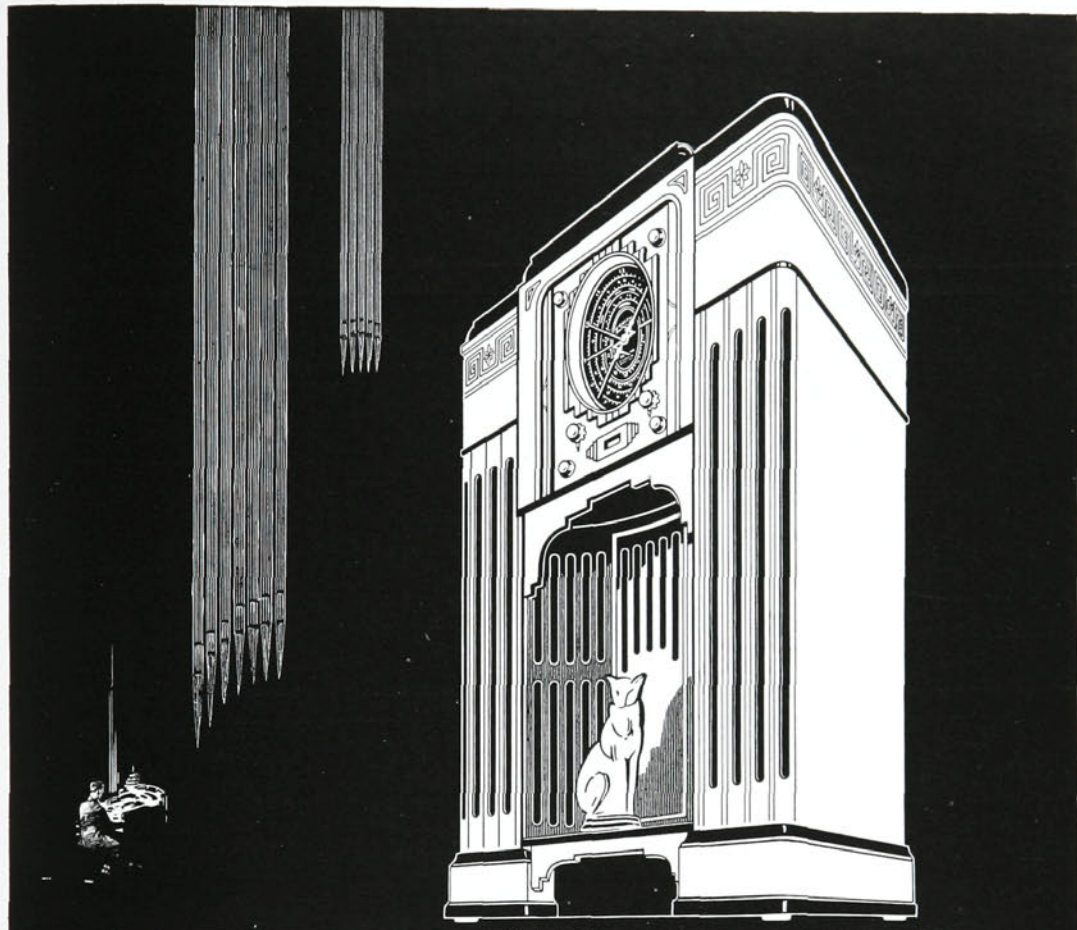
THE  
HIGH POINT, THOMASVILLE AND  
DENTON RAILROAD CO.



Is an outstanding example of accomplishment as the result of cooperation and steady, hard work. Large or small, any community thrives only when there is cooperation and a general spirit of service

“NOTHING BUT SERVICE TO SELL”





**ZENITH**

IN THE FINEST HOMES FOR 21 YEARS  
HENDRIX BROS. FURNITURE COMPANY  
HIGH POINT, NORTH CAROLINA

**HIGH POINT  
SAVINGS AND TRUST COMPANY**

COMMERCIAL BANKING

*Established 1905*

**ELLIOTT  
FLORAL COMPANY**

Sheraton Hotel Bldg.

*Flowers for all Occasions*

*Member F. T. D. A.*

FLOWERS BY WIRE

Day Phone 2586

Night Phone 41302

**COMPLIMENTS**

OF

**North Carolina Theatres**

*Incorporated*

PARAMOUNT  
BROADHURST  
CAROLINA  
RIALTO

---

---

**COMPLIMENTS**

OF

**DUKE POWER COMPANY**

---

---

TEXTILE  
PAPERS

PRINTING  
PAPERS

McNEIL PAPER COMPANY, INC.  
CHARLOTTE, N. C.

TWINE  
TAPE

SCHOOL  
SUPPLIES

COMPLIMENTS  
OF  
**CECIL'S DRUG  
STORE**  
A. COKE CECIL, *Manager*

*It Pays to Shop at  
Penney's*  
**J. C. PENNEY CO.**  
HIGH POINT, N. C.



**Jarman**  
IS FRIENDLY SHOES

Good shoe news! see this Jarman Friendly All-white Brogue . . . at the \$5 "Friendly" price!

**WRIGHT-CLINE SHOP**  
308 N. MAIN    323 N. MAIN  
PHONE 4078





CHARLES E. RIDGE  
*Manager*

Our sincere thanks to our many customers  
and best wishes to the new management

## HIGH POINT COLLEGE BOOK STORE

WILSON ROGERS, '37

SHELDON DAWSON, '37

## HIGH POINT STEAM LAUNDRY

Expert Dry Cleaning,  
Dyeing and  
Pressing



228 NORTH WRENN ST.

Phone 3325

## BRYCE COMMERCIAL COLLEGE

MISS MARIE HANDLEN  
*Director*

MRS. G. W. CLARK  
*Secretary-Treasurer*

119 1-2 N. Main

Phone 2663



*Our Business Is To Train You  
For Success*



Bonded for the protection of our  
Students. Licensed by State Board  
of Commercial Education

## EDGAR SNIDER

PRINTING

244 NORTH WRENN

PHONE 41411

*Compliments of*  
W. A. Davis Milling  
Company

ROBERTSON BAKERY  
*Splendid Bread and Cakes*

HEDGECOCK LUMBER  
COMPANY

1215 Ward Street

Phone 44232

EFIRDS  
DEPARTMENT STORE

142-144 S. Main Street

*Quality at a reasonable price*

*Compliments of*  
Carolina Casket Company

Phone 2148

SHERATON BEAUTY  
SHOP

Mezzanine Floor Sheraton Hotel

Sample Shoe Store

*The Store That Value Built*

*Compliments of*  
Logan Porter Mirror Co.

Phone 2657

BELK STEVENS CO.

*Compliments of*  
PAT BROWN, Inc.

*Ford Products*

*Compliments of*  
SUNSHINE LAUNDRY

Phone 3393

GENUINE DRY CLEANING

GUILFORD GENERAL  
HOSPITAL

COMPLIMENTS  
OF  
Mirror Beauty Shop

COMPLIMENTS  
OF  
Bakur's Shoe Store

COMPLIMENTS  
OF  
Richardson's Department  
Store

MORGAN'S  
JEWELRY AND MUSIC  
CLASSICAL AND POPULAR MUSIC  
Exclusive Agents for Gibson's Instruments  
210 E. Washington St. Phone 8225

Carolinian Cafeteria  
120 NORTH MAIN STREET

SEARS, ROEBUCK  
COMPANY  
*The World's Largest Store*

COMPLIMENTS  
OF  
SNOW LUMBER CO.

COMPLIMENTS  
OF  
CITY FUEL CO.

COMPLIMENTS  
OF  
Blue Bird Castle  
Opposite Post Office

**Harlee's**  
*High Point's Quality  
Department Store*

COMPLIMENTS  
OF  
Beeson Hardware Co.

BALLANCE & CO.  
WHOLESALE CONFECTIONS  
GREENSBORO, N. C.



# J. W. SECHREST AND SON

*Since 1887*

AMBULANCE SERVICE  
DIAL 3349



## HIGH POINT FLORAL COMPANY

CORSAGES  
A SPECIALTY

*Reasonable Prices*

1696 English St.

Phone 3116

## GARLAND DISTRIBUTING COMPANY

Phone 4610

# HIGH POINT COLLEGE

GIDEON IRELAND HUMPHREYS, A.M., D.D., *President*

*"In the Heart of the Piedmont"*

MODERN FIRE-PROOF BUILDINGS  
NON-SECTARIAN

### CO-EDUCATIONAL

*Rated Standard "A" Grade by State Board of Education*

Courses in Education, Language, History, Commerce, Home Economics, Science, Religious  
Education, Music—leading to degrees of A.B. or B.S.

Low Rates Put College Training in Reach of the Youth with Limited Means

*"A Growing College in a Growing City"*

For Catalogue Apply to

**PRESIDENT OR REGISTRAR**

HIGH POINT COLLEGE

HIGH POINT, N. C.

Careful and Courteous Drivers



4 for the price of 1—25c

BAGGAGE TRANSFERRED

DIAL 4531

DIAL 4531

"Better Printing Pays"

## Barber-Hall Printing Company

PHONE 2385

## DE LUXE DINER HIGH POINT

Dixie Diner

Dixie Diner

GREENSBORO

RALEIGH

*Always the Best Places For  
Real Food*

## HIGH POINT PAPER BOX CO.

*Incorporated*

*Manufacturers*

High Grade Paper Boxes  
HIGH POINT, N. C.

DR. NAT WALKER

OPTOMETRIST  
EYE-STRAIN SPECIALIST  
HIGH POINT THOMASVILLE  
NORTH CAROLINA



**P**erfect  
rotection  
ays

**E**very way  
very day

N. L. Garner, Agency

Occidental Life Insurance Company

701 Security Bank Building

PHONE 4648

### AFTER COLLEGE

For better business training and a good  
position for YOU,

ATTEND

## JONES BUSINESS COLLEGE

128 1-2 W. Commerce St. High Point, N. C.

*The Accredited School  
P. P. JONES, M.A., Manager*

## ROSE FURNITURE COMPANY

R. C. A. RADIOS  
FURNITURE, RUGS, RANGES

243 SOUTH MAIN ST.

Phones 4332—2788

THE  
PHOTOGRAPHS

IN THIS ANNUAL  
WERE MADE BY

Dunbar & Daniel  
Studio

134 Fayetteville Street

Raleigh, North Carolina



FINE PORTRAITS  
PROMPT SERVICE



Largest College Annual  
Photographers In The South







# Achievement

~ ACHIEVEMENT IN ANY LINE  
OF ENDEAVOR IS THE NATURAL  
RESULT OF ABILITY AND  
EXPERIENCE, PLUS OPPORTUNITY.  
~ THIS ORGANIZATION TAKES PRIDE  
IN ITS SUCCESS ~ SUCCESS EARNED  
BY THE ABILITY OF ITS MEMBERS,  
THE EXPERIENCE GAINED IN  
TWENTY YEARS OF EFFORT, AND  
THE OPPORTUNITIES OFFERED BY  
ITS CLIENTS.

CHARLOTTIE ENGRAVING  
COMPANY INC.

ARTISTS- PHOTO-ENGRAVERS-DESIGNERS  
CHARLOTTE  
NORTH  
CAROLINA



ESTABLISHED NINETEEN FIFTEEN

**World's Largest Publishers**

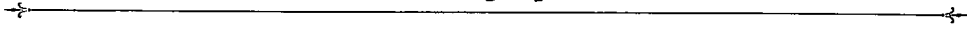
THIS BOOK DESIGNED AND PRINTED BY

*Benson*

PRINTING COMPANY ☆ NASHVILLE

**of College Annuals**

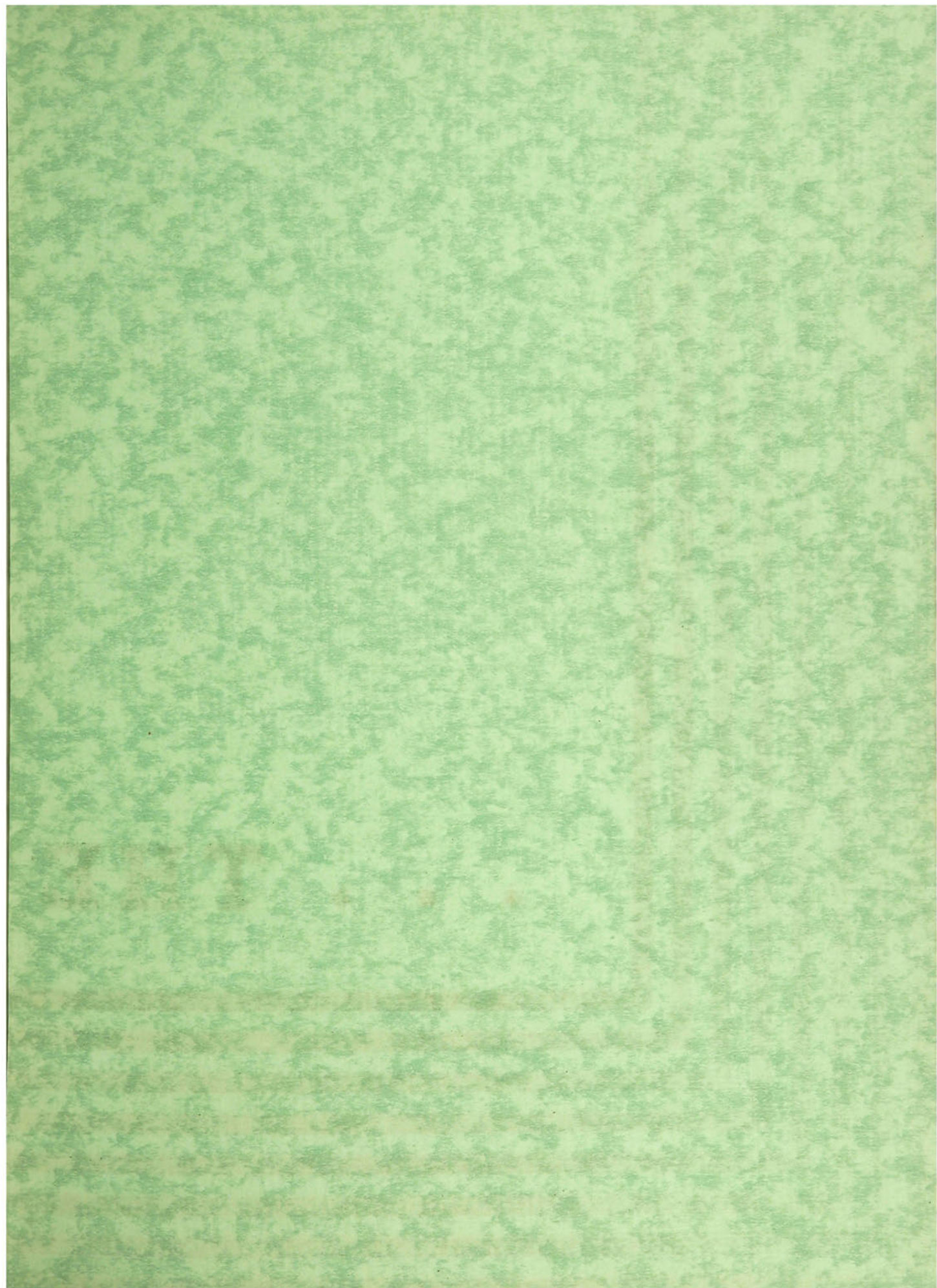
*Autographs*















• • • **THE**



**1937 ZENITH**





