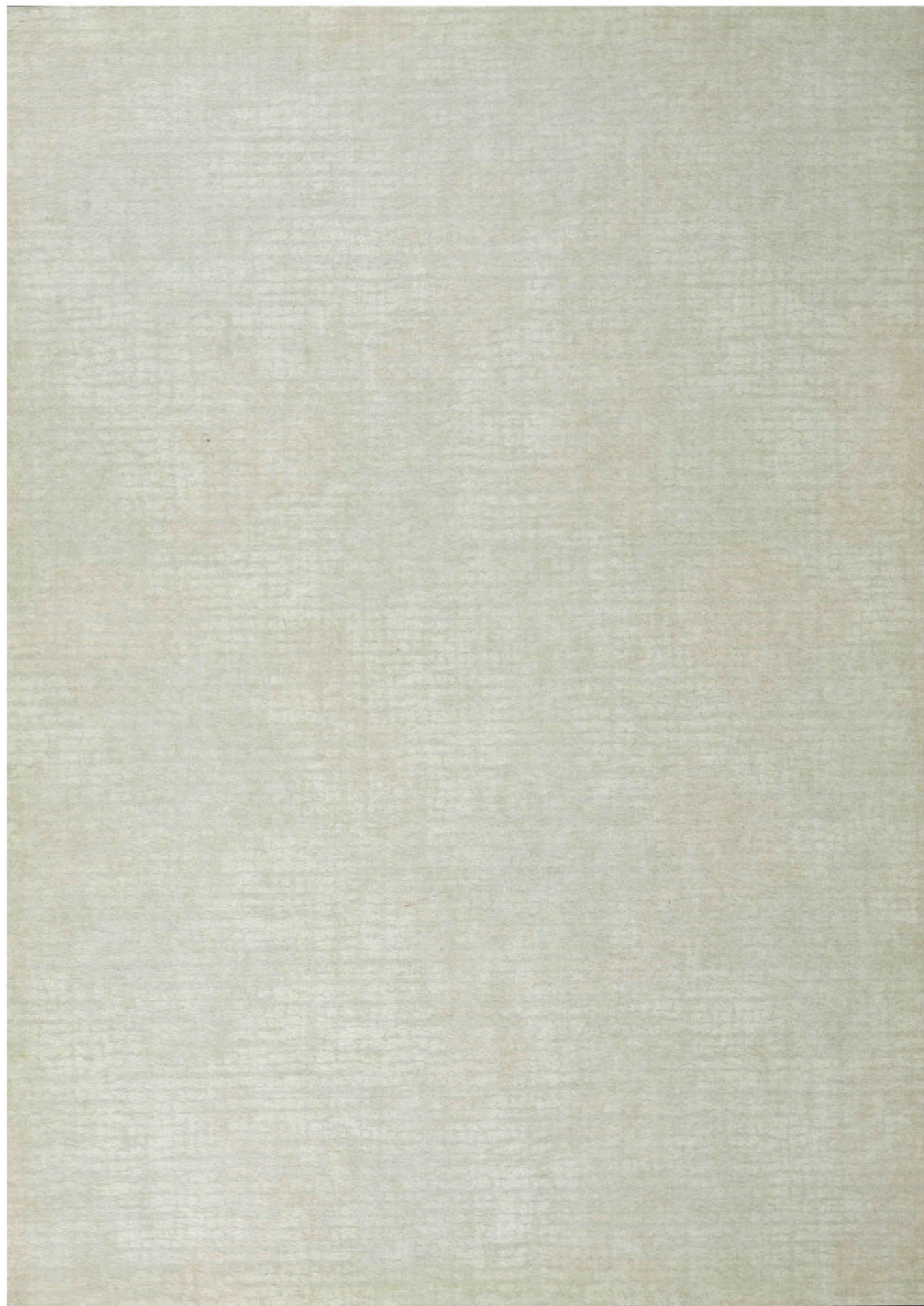


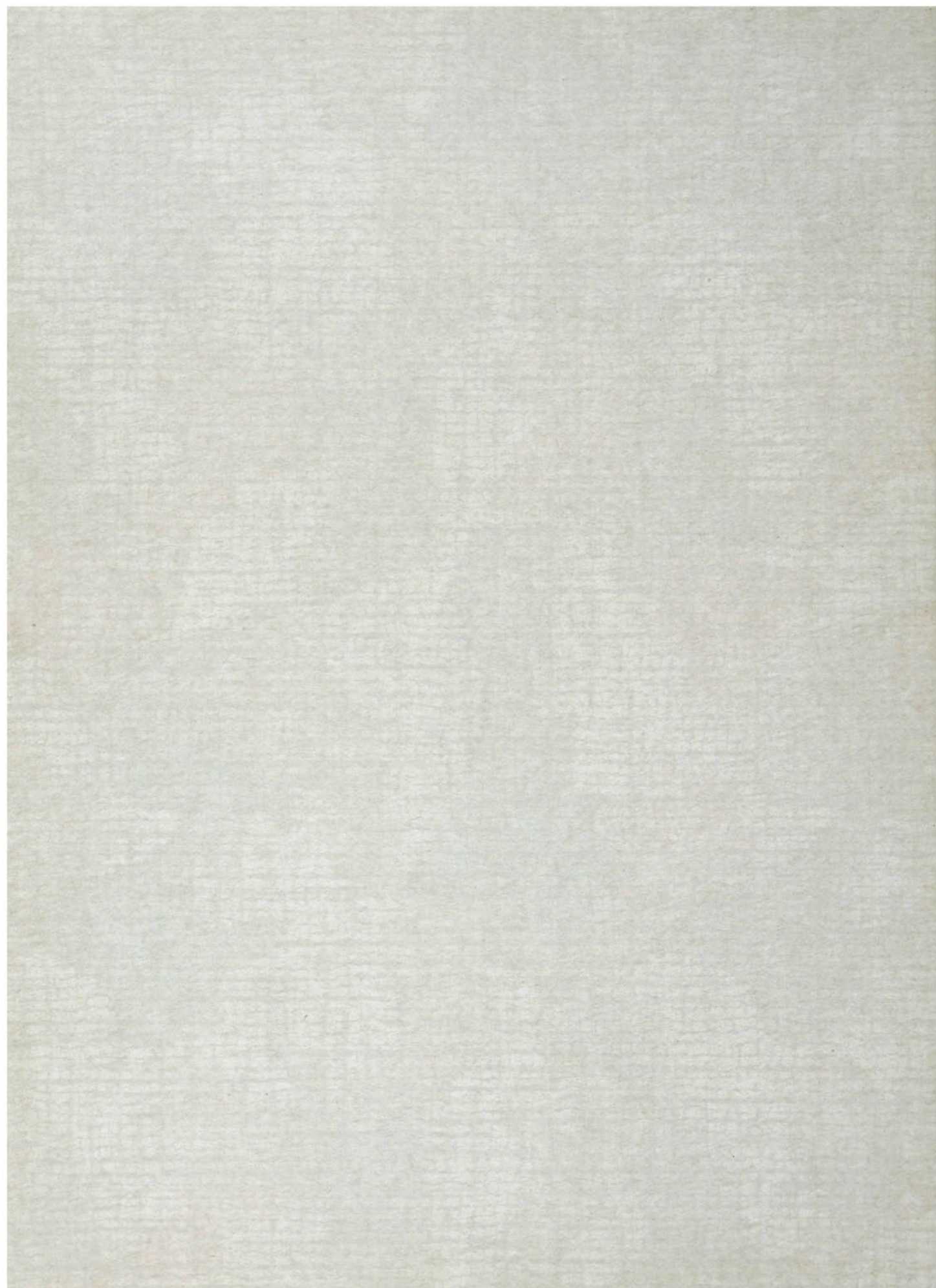
HIGH POINT COLLEGE



THE
ZENITH
1939



WRENN MEMORIAL LIBRARY
HIGH POINT COLLEGE
HIGH POINT, N. C.





|| 1924 ||
|| 1939 ||

HIGH POINT COLLEGE



THE ZENITH



F R A N C E S M U S E
EDITOR

A L L E N T H A C K E R
MANAGER



PUBLISHED ANNUALLY BY THE STUDENTS OF
HIGH POINT COLLEGE, HIGH POINT, N. C.

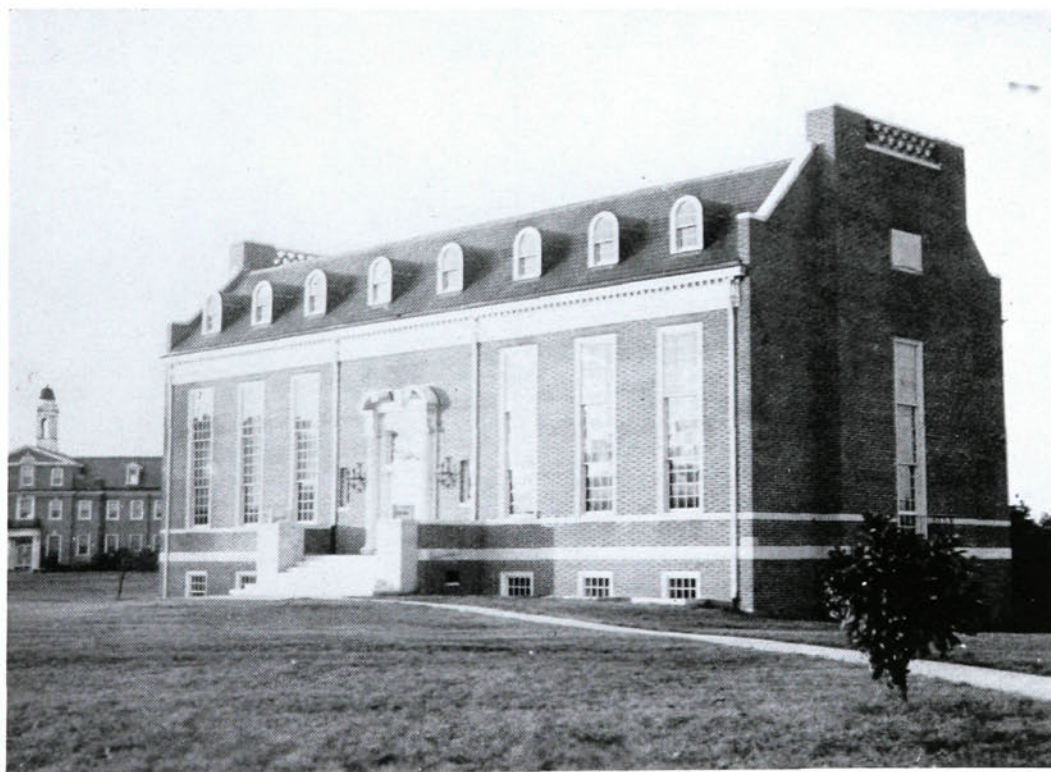
Foreword



In this the thirteenth volume of the Zenith, if we can stimulate your mind with recollections of friends and activities of our Alma Mater; if we have made on you lasting impressions of its continuous progress; and growth; and, if we can make you conscious of its great meaning in your life--if this be done, then we have pleurably fulfilled our earnest aims.

Contents

C O L L E G E
O R G A N I Z A T I O N S
A T H L E T I C S
F E A T U R E S ■





Dedication

The Zenith of 1939 is Dedicated to the memory of Mr. Charles F. Finch, an outstanding layman of the Methodist Protestant Church and a Trustee of High Point College: Recognized for his loyalty and devotion to the interests of the Kingdom as these interests were represented in the Church and College



MR. CHARLES F. FINCH

C o l l e g e . . .





GIDEON IRELAND HUMPHREYS, A.M., D.D., LL.D.
President

BOARD OF TRUSTEES

H. A. MILLIS President
N. M. HARRISON Secretary-Treasurer

DR. J. W. PRITCHARD
DR. G. I. HUMPHREYS
REV. J. C. AUMAN
MR. C. F. FINCH
MR. H. A. MILLIS
MR. G. H. KEARNS
MR. B. K. MILLOWAY
REV. N. M. HARRISON

MR. C. C. ROBBINS
MR. J. S. PICKETT
DR. S. W. TAYLOR
MR. L. F. ROSS
MRS. M. J. WRENN
MR. A. M. RANKIN
DR. W. A. LAMBETH
REV. J. E. PRITCHARD
MR. R. M. COX

DR. J. H. CUTCHIN
MR. CHAS. W. MCCRARY
DR. J. D. WILLIAMS
MR. J. M. MILLIKAN
MR. J. NORMAN WILLS
MR. F. LOGAN PORTER
MRS. C. F. FINCH
MR. E. T. TEAGUE

GREETINGS

I am happy to offer greetings to the Senior Class and the rest of the student body of High Point College in this year's edition of the *ZENITH*.

My best wishes to this the largest graduating class in the history of the college. I sincerely hope that each and everyone of you are going out from our halls with a training that will fit you for the contacts of life. And that you will take, to whatever field of labor in which you find yourselves, an optimism and sacrifice that will enable you to render the best service of which you are capable. I trust that your character has been so developed through the testings that have come to you that each of you will stand forth, in your community of associations, as a real man or woman.

We, of the administration and faculty, have a pride in you as our graduates. We also put our trust in you that you will so live and labor that we shall always be glad to call you our boys and girls.

My good wishes and high hopes for the rest of the student body for the coming year and years. Your opportunity for making the most of college still remains with you. Whatever such possibility is lies with you in the main—you can make or mar such privilege. I sincerely trust that you will realize that at the most "the time is short." As you face, therefore, the future days here on the campus—face them with a genuine determination to put the best of yourselves into them that you may get from them the best they have to offer. Build a worthwhile comradeship and cement such friendships as will count the most for life. Learn to so number your days that you may be able to apply your hearts unto wisdom. Get knowledge; but with all thy getting, get understanding—is still a mighty wise proverb; hearken unto it and heed its admonition.

Faternally,

GIDEON I. HUMPHREYS, *President*.



FACULTY

MISS LOUISE ADAMS, A.M.

Instructor in Mathematics

A.B., High Point College, 1929; A.M., University
of North Carolina, 1930.
High Point College, 1933.



J. HOBART ALLRED, A.M.

Professor of Modern Languages

A.B., University of North Carolina, 1922; A.M.,
ibid., 1929.
High Point College, 1924.



MISS BANKS APPLE, R.N.

Nurse

ALLEN AUSTIN, B.S.

Assistant Promotional Secretary

B.S., High Point College, 1937.



MISS LOLA BARRY, M.S.

Professor of Home Economics

B.S., Tennessee State Teachers College, 1930;
M.S., University of Tennessee, 1934.
High Point College, 1936.



MRS. ALDA T. BERRY, M.A.

Instructor in Business Department

A.B., Winthrop College, 1916; M.A., New York
University, 1938.
High Point College, 1938.



EDMOND O. CUMMINGS, Ph.D.

Professor of Chemistry

B.S., University of North Carolina, 1919; Ph.D.,
Massachusetts Institute of Technology, 1923.
High Point College, 1928.



E. BARTON DULAC, M.A.

Professor of Business Administration

B.S., Syracuse University, 1926; M.A., New York
University, 1938.
High Point College, 1937.



FACULTY

WALTER R. FLEISCHMANN, A.M.
Instructor of Dramatics and Speech
A.B., St. Olaf College, 1935; A.M., University of Iowa, 1938.
High Point College, 1939.



WILLIAM H. FORD, A.M.
Assistant Professor of Business Administration
B.A., University of South Carolina, 1923; M.A., *ibid.*, 1928; Graduate Work, *ibid.*, 1928-1929; Graduate Work University of North Carolina, 1937-1938.
High Point College, 1934-'37, 1938.



E. C. GLASGOW, A.B.
Instructor of English
A.B., High Point College, 1930; Graduate Work, University of North Carolina, 1935, 1937.
High Point College, 1937.



MRS. LILLIAN M. GREEN
House Mother, Boys' Dormitory
High Point College, 1937.



R. HOWARD GUNN, A.B.
Instructor of Business Administration
A.B., Elon College, 1924.
High Point College, 1929.



MISS JANET F. HALL
Instructor in Music
Diploma from Institute of Musical Art, 1935; Postgraduate voice study with Estelle Liebling, Alice Nichols, Walter Kieseewetter.
High Point College, 1937.



NATHANIEL M. HARRISON, B.D.
Promotional Secretary
A.B., Western Maryland College, 1916; B.D., Westminster Theological Seminary, 1919.
High Point College, 1930.



BENJAMIN H. HILL, Ph.D.
Professor of Biology
A.B., Texas Christian University, 1921; M.S., Texas Christian University, 1925; Ph.D., University of Illinois, 1932.
High Point College, 1929-'32, 1937.



FACULTY

CLIFFORD REGINALD HINSHAW,
A.M., Litt.D.

Professor of Education and Psychology

A.B., Guilford College, 1916; A.M., University of North Carolina, 1924; A.M., A.M., Columbia University, 1927; Litt.D., Western Maryland College, 1932.
High Point College, 1927.



E. VERA IDOL, A.M.

Professor of English

A.B., Greensboro College, 1921; B.S., Teachers College, Columbia University, 1923; A.M., Columbia University, 1927; Summer School, Oxford University, England, 1928.
High Point College, 1924.



MISS C. LUCILE JOHNSTON

Secretary to President



PAUL S. KENNETT, B.D., LL.D.

Professor of History

A.B., Guilford College, 1913; B.D., Westminster Theological Seminary, 1917; LL.D., Adrian College, 1928.
High Point College, 1924.



PERCY E. LINDLEY, A.M., Litt.D.

Dean of the College and Professor of Religious Education

A.B., Elon College, 1920; A.M., Vanderbilt University, 1921; Litt.D., Western Maryland College, 1928.
High Point College, 1924.



A. C. LOVELACE, A.B., M.Ed.

Assistant Professor of Education

A.B., Wake Forest College, 1916; M.Ed., Duke University, 1931.
High Point College, 1937.



MRS. MABEL T. MILLIKAN, A.B.

Social Director Woman's Hall

A.B., Asheville Normal, 1902.
High Point College, 1936.



J. HARLEY MOURANE, M.S.

Professor of Chemistry and Physics

B.S., University of North Carolina, 1922; M.S., *ibid.*, 1924.
High Point College, 1924.



FACULTY

MISS JANET RUSSELL, Mus.B., Sch. Mus.B.
Head of Music Department

Oberlin Conservatory of Music, 1932; Pianoforte
Study, London, England; Egon Petri and Tobias
Matthay, 1935-1936.

High Point College, 1936.



MISS GERTRUDE STRICKLER, B.S., A.M.
Director Physical Education for Women

B.S., Central Missouri State Teachers College;
A.M., University of Missouri.

High Point College, 1937.



MRS. C. L. WHITAKER
Dietitian

MRS. ALICE PAIGE WHITE, A.M.
Professor of Greek and Latin

A.B., Boston University, 1893; A.M., Teachers
College, Columbia University, 1907.

High Point College, 1924.



NATHANIEL P. YARBOROUGH, A.M.
Associate Professor of Modern Languages

A.B., Wofford College, 1923; A.M., University of
South Carolina, 1928; Diploma from Institute of
Phonetics, University of Paris, 1930.

High Point College, 1925.



C. VIRGIL YOW, A.B.
Director Physical Education for Men

A.B., High Point College, 1930.

High Point College, 1932.



Senior Class

OFFICERS

DANIEL C. SHARPE *President*

CHARLES EDWARD HARVILLE *Vice-President*

JACQUELINE DeVINE KINNEY *Secretary*

HELEN RAE HOLTON *Treasurer*



Harville, Baity, Kinney, Sharpe

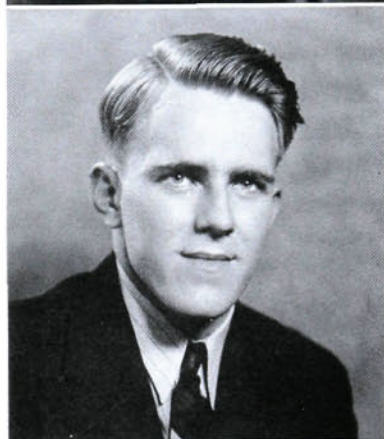


IDA MAE ALEXANDER

THOMASVILLE, N. C.

A.B.

Appalachian State Teachers College, 1, 2.



HUGH H. ALMOND

ALBEMARLE, N. C.

B.S. in Business Administration

Pfeiffer Junior College, 1, 2; Thalean Literary Society, 3; Football, 3, 4; Track, 3, 4.



CHARLES E. ANDERSON

LYNBROOK, N. Y.

A.B.

Nassau Collegiate Center, 1, 2; Band, 3; A Capella Choir, 3, 4; Ministerial Association, 3, 4.



MARY MITCHELL BAITY

HENDERSON, N. C.

A.B.

Artemesian Literary Society, 1, 2, 3, 4; Chaplain, 2; Reporter, 3, 4; Christian Endeavor, 1, 2, 3, 4; W. A. A., 1, 2, 3, 4; Treasurer, 3; Vice-President, 4; ZENITH, 3, 4; Dormitory Council, 2, 3, 4; Treasurer, 2; Secretary, 3; Vice-President, 4; Class Vice-President, 1; Class Secretary, 2, 3; Class Treasurer, 4; Marshall, 3; Who's Who, 4.

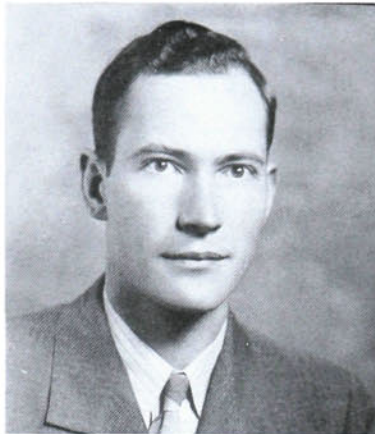
SENIOR CLASS

JIM BARLOW

TRADE, TENN.

A.B.

Pfeiffer Junior College, 1, 2; Football, 3.



HELEN MOSELLE BATES

BROWN'S SUMMIT, N. C.

B.S. in Home Economics

Modern Priscilla Club, 1, 2, 3, 4; President, 3;
Nikanthan Literary Society, 1, 2, 3, 4; Hi-Po Staff,
1, 2, 3, 4; Dormitory Council, 1; W. A. A., 1, 2,
3, 4; W. A. A. Council, 3, 4; Christian Endeavor
Society, 1, 2, 3, 4; Treasurer, 3; Y. W. C. A., 1;
Art Club, 1.

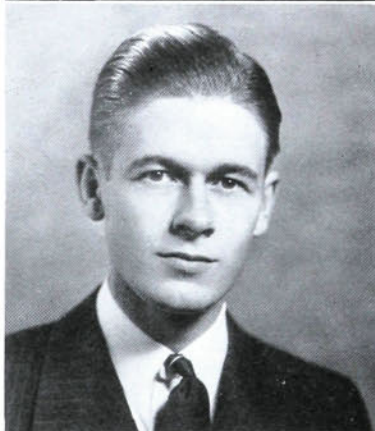


ARTHUR R. BOOKOUT, JR.

CHARLOTTE, N. C.

B.S. in Chemical Engineering

Hi-Po, 3, 4; Engineer's Club, 4; President, 4;
Who's Who, 4; Orchestra, 1.

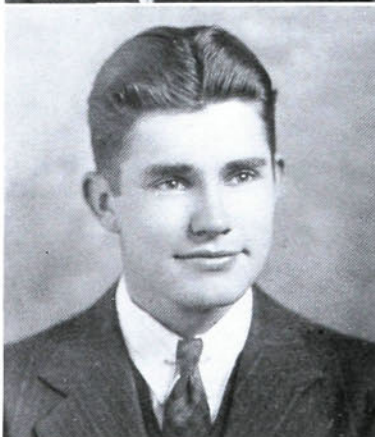


J. VAUGHN BOONE

GRAHAM, N. C.

A.B.

Thalean Literary Society, 1, 2, 3, 4; Secretary, 2;
Vice-President, 2; Treasurer, 4; A Capella Choir,
1, 2; Chief Junior Marshal, 3; Track, 3, 4; Who's
Who, 4; Ministerial Association, 4; Pre-Med Club,
4; President, 4; Footlighters' Club, 4; International
Relations Club, 4.



THE
ZENITH



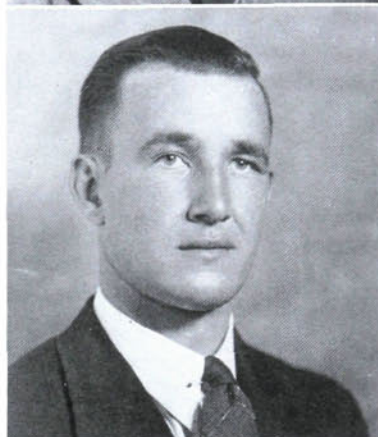
SENIOR CLASS

HARRY G. BRIGHT

FAIRMONT, W. VA.

A.B.

Western Maryland, 1; Fairmont State, 2; Davis and Elkins, 3; Band, 4; Christian Endeavor, 4; ZENITH, 4.

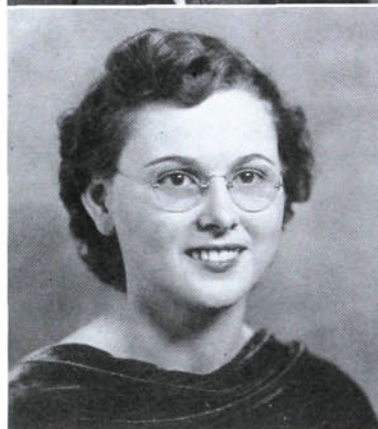


HOLLAND LEE BRINKLEY

LEXINGTON, N. C.

A.B.

Akrothinian Literary Society, 2, 3, 4; Dormitory Council, 2.



GERTRUDE BROWN

GATES, N. C.

A.B.

Chowan, 1, 2; Christian Endeavor, 3, 4; Nikanathan Literary Society, 3, 4.



SAIDEE BUNN

CONCORD, N. C.

B.S. in Music

Pfeiffer Junior College, 1, 2; Christian Endeavor, 3, 4; Pianist, 4; Nikanathan Literary Society, 3, 4; Pianist, 3, 4; W. A. A., 3, 4.

SENIOR CLASS

MARGARET BURNSIDE

CHESTER, S. C.

A.B.

Chester Junior College, 1; Mars Hill Junior College, 2; Nikanthan Literary Society, 4.



VIRGINIA BURTON

HIGH POINT, N. C.

B.S. in Business Administration

Nikanthan Literary Society, 1, 2, 3, 4.



PAULINE BYRUM

TYNER, N. C.

A.B.

Chowan, 1, 2; Nikanthan Literary Society, 3, 4; W. A. A., 3, 4; Christian Endeavor, 3, 4; Medical Club, 4; Technician, 4.



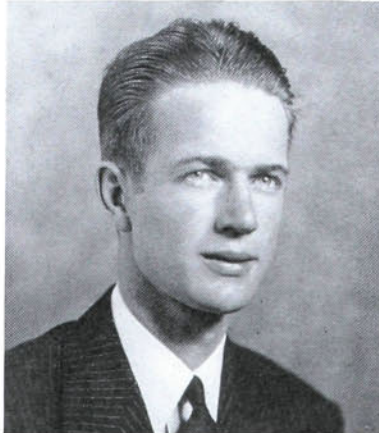
FRED J. COX, JR.

LEXINGTON, N. C.

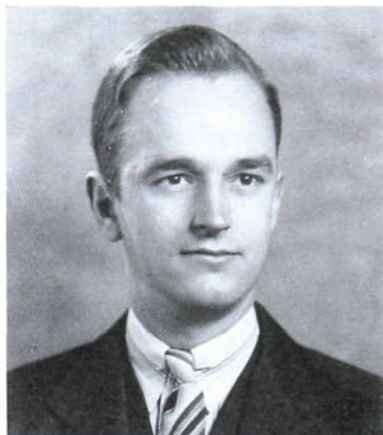
B.S. in Business Administration

Δ A E

Akrothian Literary Society, 1; Dormitory Council, 4; Manager Soccer, 2; Band, 1, 2, 4; Football, 3; Cheerleader, 4; Block "H" Club, 3, 4.



THE
ZENITH



GEORGE NAYLOR CRAVER

WASHINGTON, D. C.

A.B.

Akrothian Literary Society, 1, 2, 3, 4; Manager
Baseball, 2; Christian Endeavor, 2; ZENITH, 1.



MARY MILLER CRAWFORD

RUTHERFORDTON, N. C.

A.B.



DOROTHY CUMMINGS

HIGH POINT, N. C.

A.B.



VIRGINIA DIXON CURRY

DENTON, N. C.

B.S. in Home Economics

Nikanthan Literary Society, 1, 2, 3, 4; President, 4;
Choristor, 3; Forensic Council Representative, 3;
Monitor, 2; A Capella Choir, 1, 3; Modern Priscilla
Club, 1, 2, 3, 4; Secretary-Treasurer, 2; President,
4; Class Secretary 1; Christian Endeavor, 1, 2, 3,
4; Secretary, 2; Hi-Po, 1, 2, 3, 4; W. A. A., 1, 2,
3, 4; Y. W. C. A., 1.

SENIOR CLASS

HELEN DAVIS

ENFIELD, N. C.

B.S. in Business Administration

Flora Macdonald College, 1, 2; Art Society, 3, 4;
W. A. A., 3, 4.

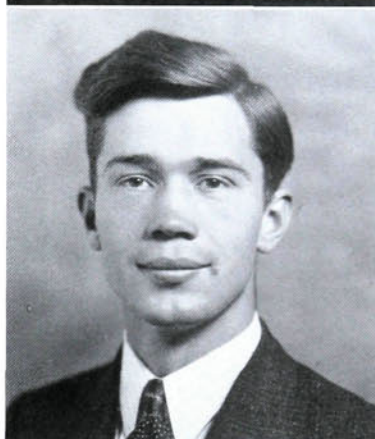


JOHN HERMAN DAVIS

THOMASVILLE, N. C.

B.S. in Business Administration

Thalean Literary Society, 1, 2, 3, 4; Soccer, 1, 2, 4;
Manager, 2; Hi-Po, 1, 2; Circulation Manager, 2;
Track, 1, 3; Christian Endeavor, 1, 2, 3, 4.



MARGUERITE DEYOE

PINE BLUFF, N. C.

B.S. in Dietetics

Pfeiffer Junior College, 1, 2; Artemesian Literary
Society, 3, 4; Christian Endeavor, 3, 4; Modern
Priscilla, 3, 4.

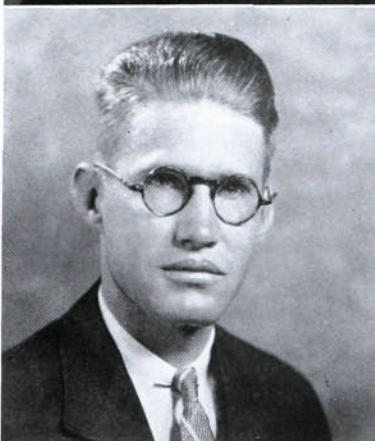


HARMON DILLARD

WAYNESBORO, MISS.

A.B.

Westminster Junior College, 1, 2; Thalean Literary
Society, 3, 4; Christian Endeavor, 3, 4; Ministerial
Association, 3, 4; Chaplain, 4.



THE
ZENITH



SENIOR CLASS

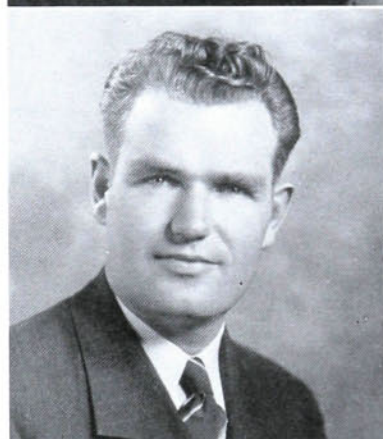
VIRGINIA DIXON

HIGH POINT, N. C.

A.B.

T P

Artemesian Literary Society, 1, 2, 3, 4; Secretary, 2; Vice-President, 3; W. A. A., 1, 2, 3, 4; Secretary, 4; President, 4; Cheerleader, 1, 2, 3, 4; Chief, 3, 4; Junior Marshal, 3; Lighted Lamp, 3, 4; Who's Who, 4; Student Council, 4; Secretary, 4; Class Vice-President, 3.



ARTHUR W. EDWARDS, JR.

SEABOARD, N. C.

A.B.

I T K

Chowan, 1, 2; Thalean Literary Society, 3, 4; Critic, 4; Football, 3; Christian Endeavor, 3, 4; Hi-Po, 4.



ELLA FRANCES EDWARDS

SEABOARD, N. C.

A.B.

Chowan, 1, 2; Christian Endeavor, 3, 4; W. A. A., 3, 4; Nikanathan Literary Society, 3, 4.



VERA MAE FERREE

HIGH POINT, N. C.

A.B.

Nikanathan Literary Society, 1, 2, 3, 4.

SENIOR CLASS

JACK H. GIBSON

HIGH POINT, N. C.

B.S. in Chemical Engineering

ΕΠΘ

Engineer's Club, 4.



MARY LOUISE GIBSON

GIBSON, N. C.

B.S. in Business Administration

Pfeiffer Junior College, 1, 2; ZENITH Staff, 3, 4;
Artemesian Literary Society, 3, 4; International
Relations Club, 4.

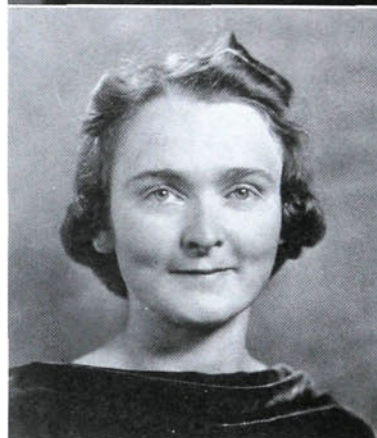


HAZAR S. GLOVER

NEWSOM, N. C.

A.B.

Pfeiffer Junior College, 1, 2; W. A. A., 3, 4.



NANNIE JEANNETTE GOODMAN

HIGH POINT, N. C.

A.B.

Boiling Springs Junior College, 1, 2; Nikanathan
Literary Society, 3, 4; W. A. A., 3, 4.



THE
ZENITH



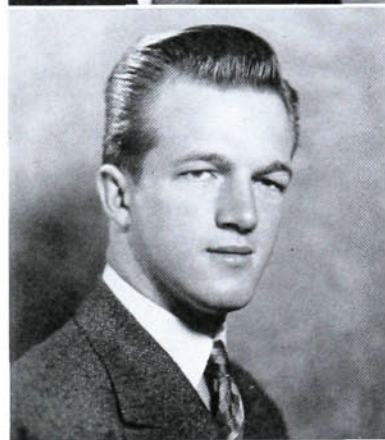
SENIOR CLASS

EMSLEY PAUL HAMILTON

TROY, N. C.

A.B.

Thalean, 2, 3, 4; Ministerial Association, 1, 2, 3, 4;
Treasurer, 3; Chaplain, 4; Christian Endeavor, 3.



CHARLES EDWARD HARVILLE

HIGH POINT, N. C.

A.B.

E H O

Football, 3; Trainer, 4; Pan-Hellenic Council, 4;
Vice-President Class, 4.



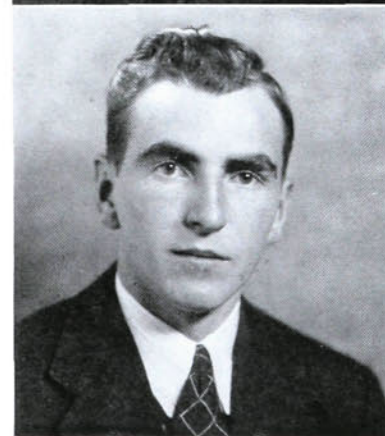
PORTER ALLEN HAUSER

PINNACLE, N. C.

B.S. in Business Administration

I T K

Akrothian Literary Society, 1, 2, 3, 4; Marshal,
1; Chaplain, 2, Vice-President, 3; President, 4;
Dormitory Council, 3, 4; Tennis, 3, 4; Freshman
Basketball, 1.



M. C. HENDERSON, JR.

ASHEBORO, N. C.

B.S. in Business Administration

Δ A E

Thalean Literary Society, 1, 2, 4; Freshman Basket-
ball, 1; Commercial Club, 3; Pan-Hellenic Council,
4.

SENIOR CLASS

WILLIAM HESTER

GREENSBORO, N. C.

B.S. in Chemical Engineering

E H Ø

Akrothinian Literary Society, 3, 4; Vice-President, 3; Engineers Club, 4; Secretary, 4; Basketball, 2, 3, 4; Block "H" Club, 3, 4.

G. W. HOLMES, III

GRAHAM, N. C.

A.B.

I T K

Thalean Literary Society, 1, 2, 3, 4; Student Council, 2; Debater, 2; Class President, 3; Athletic Council, 3, 4; Manager of Basketball, 3; Christian Endeavor, 1, 2, 3, 4; Marshal, 3; Lighted Lamp, 3, 4; ZENITH 2, 3, 4; Block "H" Club, 4; Soccer, 1, 2; Football, 3.

HELEN RAE HOLTON

HIGH POINT, N. C.

A.B.

T P

Artemesian Literary Society, 1, 2, 3, 4; Treasurer, 3; President, 4; W. A. A., 1, 2, 3, 4; Treasurer, 4; Class Treasurer, 3.

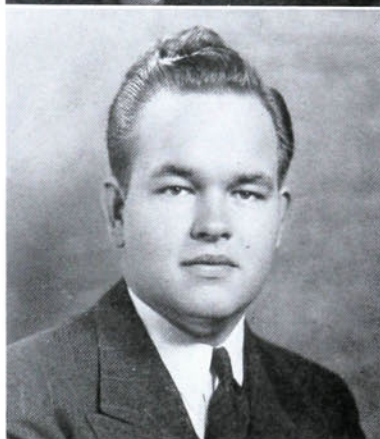
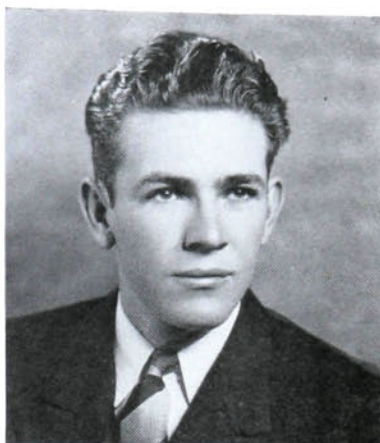
LUCILLE INGRAM

HIGH POINT, N. C.

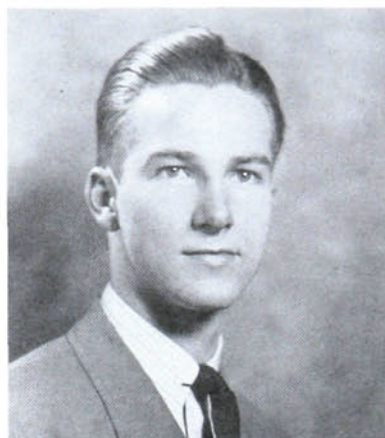
A.B.

E A Ø

Artemesian Literary Society, 1, 2, 3, 4; Pianist, 2; A Capella Choir, 2.



THE
ZENITH



CHARLES JARRELL

HIGH POINT, N. C.

A.B.



JANICE JENKINS

AULANDER, N. C.

A.B.

Chowan College, 1, 2; Dramatic Club, 3; W. A. A.,
3, 4; Artemesian Literary Society, 3, 4.



VIOLET ALYCE JENKINS

FROSTBURG, MD.

A.B.

T P

Hi-Po, 1, 2, 3; Art Club, 1, 2, 3, 4; A Capella
Choir, 1, 2, 3, 4; W. A. A., 1, 2, 3, 4; Athletic
Council, 3, 4; Footlighters, 4.



DOROTHY LEEROY JONES

HIGH POINT, N. C.

A.B.

T P

Artemesian Literary Society, 1, 2, 3, 4; A Capella
Choir, 1, 2; Student Council, 2; Pan-Hellenic
Council, 4.

SENIOR CLASS

JAMES THOMPSON JONES

HILLSBORO, N. C.

A.B.

Thalean Literary Society, 1, 2, 3, 4; Critic, 3; Reporter, 4; ZENITH, 3; Christian Endeavor, 1, 2, 3, 4; Dramatic Club, 1, 2, 3, 4.



FRANK WILSON JOHNSON

THOMASVILLE, N. C.

A.B.

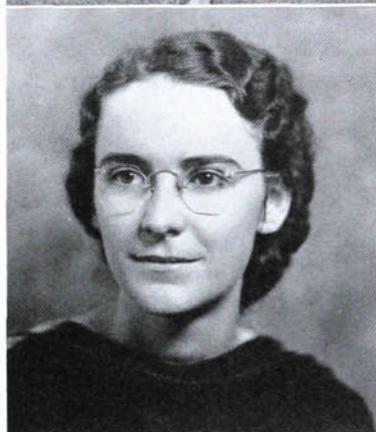


LEA JOYNER

GRAYSON, L.A.

A.B.

Westminster College, 1, 2; Ministerial Association, 3, 4; Secretary, 3; Christian Endeavor Society, 3, 4; Nikanathan Literary Society, 3, 4; W. A. A., 3.



RUBY KELLER

HIGH POINT, N. C.

A.B.

Nikanathan Literary Society, 3, 4.



THE
ZENITH



SENIOR CLASS

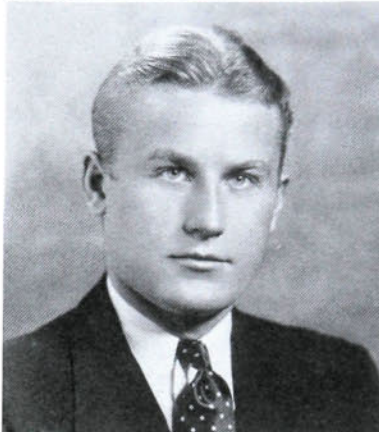
JACQUELINE DEVINE KINNEY

REIDSVILLE, N. C.

A.B.

E A Ø

Artemesian Literary Society, 1, 2, 3, 4; W. A. A., 2, 3, 4; Student Council, 3; Christian Endeavor, 2, 3, 4; Pan-Hellenic Council, 3, 4; Secretary, 3; Class Secretary, 4.

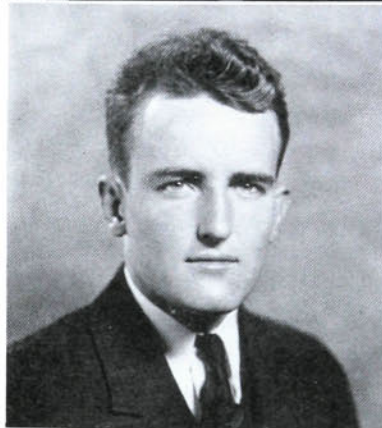


PHILIP KIZUN

BROOKLYN, N. Y.

A.B.

University of Alabama, 1.



CALEB M. LEMASTER

BESSEMER CITY, N. C.

A.B.

Pfeiffer Junior College, 1, 2; Thalean Literary Society, 3; Football, 3, 4; Co-Captain, 4; Baseball, 3; Marshal, 3.



EVELYN LINDLEY

SNOW CAMP, N. C.

A.B.

Nikanthan Literary Society, 1, 2, 3, 4; Treasurer, 3; Christian Endeavor, 1, 2, 3, 4; Treasurer, 4; W. A. A., 1, 2, 3, 4; Class Manager, 2; Vice-President, 3; Forensic Council, 4; Woman's Student Government, 3, 4; President, 4; Student Council, 4; Cheerleader, 3, 4; Y. W. C. A., 1; Who's Who, 4.

SENIOR CLASS

OWEN P. LINDLEY

GRAHAM, N. C.

B.S. in Business Administration

Thalean Literary Society, 1, 2, 3, 4; Reporter, 1, 3;
Vice-President, 4; Christian Endeavor, 1, 2, 3, 4;
A Capella Choir, 1, 2, 3, 4.



JOHN HOWARD LINK

WESTMINSTER, MD.

A.B.

Δ A E

Western Maryland, 1, 2; Akrothinian Literary So-
ciety, 3, 4; Chaplain, 4; Hi-Po, 3; A Capella Choir,
4; Christian Endeavor, 3.



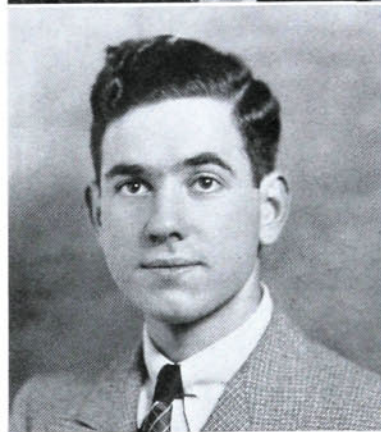
A. C. LOVELACE, JR.

HIGH POINT, N. C.

A.B.

Δ A E

Boiling Springs Junior College, 1; Thalean Literary
Society, 2, 3, 4; President, 4; Ministerial Associa-
tion, 2, 3, 4; Secretary, 3; Hi-Po, 4; A Capella
Choir, 2; Band, 2; Who's Who, 4; Lighted Lamp,
3, 4; Debater, 2, 3, 4.



OLGA MARLETTE

GRAHAM, N. C.

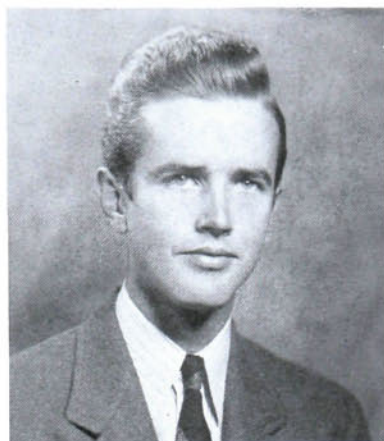
B.S. in Home Economics

T P

Artemesian Literary Society, 1, 2, 3, 4; W. A. A.,
1, 2, 3, 4; President, 3; Sports Manager, 4; Modern
Priscilla Club, 1, 2, 3, 4; Christian Endeavor, 1, 2,
3, 4.



THE
ZENITH



SENIOR CLASS

DWIGHT MORGAN

JACKSON'S CREEK, N. C.

A.B.

E H Θ

Thalean Literary Society, 1, 2, 3, 4; Secretary, 3;
Freshman Basketball, 1; Hi-Po, 3, 4; Advertising
Manager, 3; Business Manager, 4; Student Council,
3, 4; Vice-President, 3; President, 4.

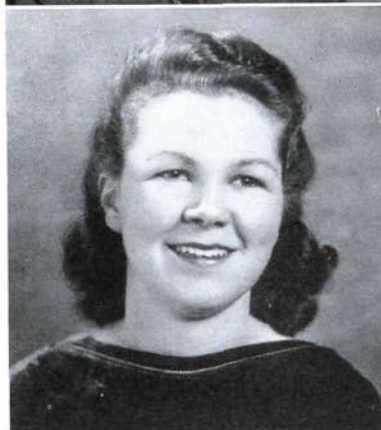


CARL MOTSINGER

LEXINGTON, N. C.

A.B.

Lenoir-Rhyne, 1, 2.



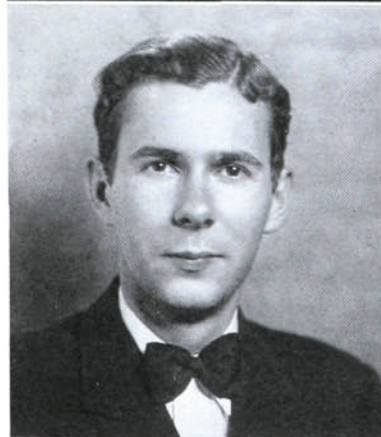
FRANCES MUSE

CARTHAGE, N. C.

B.S. in Business Administration

E A Θ

Artemesian Literary Society, 1, 2, 3, 4; Monitor, 2;
Forensic Council, 4; W. A. A., 1, 2, 3, 4; Chris-
tian Endeavor Society, 1, 2, 3, 4; Commercial Club,
2; ZENITH, 3, 4; Secretary, 3; Editor, 4.



CHARLES C. OSTWALD

SOUTH ORANGE, N. J.

A.B.

Akrothinian Literary Society, 1; Freshman Basket-
ball, 1.

SENIOR CLASS

NANCY ROYSTER PARHAM

HENDERSON, N. C.

B.S. in Business Administration

E A Ø

Artemesian Literary Society, 1, 2, 3, 4; Reporter, 3; Critic, 4; W. A. A., 1, 2, 3, 4; Reporter, 2; Christian Endeavor, 1, 2, 3, 4; Commercial Club, 2; Student Council, 3; Secretary, 3; Hi-Po, 1, 2, 3, 4; Marshal, 3.

JAMES ROGER PEELER

BELWOOD, N. C.

A.B.

I T K

Akrothian Literary Society, 1, 2, 3, 4; Freshman Basketball, 1; Dormitory Council, 2; Student Council, 4; Forensic Council, 4.

SARAH LOU PEOPLES

MOCKSVILLE, N. C.

A.B.

Pfeiffer Junior College, 1, 2; Artemesian Literary Society, 3, 4; Christian Endeavor, 3, 4; W. A. A., 4.

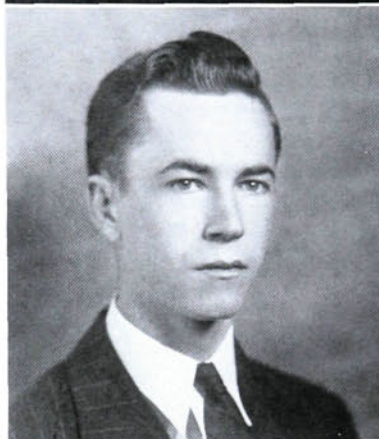
MYRTLE POORE

HIGH POINT, N. C.

A.B.

A T P

Guilford College, 1; A Capella Choir, 2, 3, 4; Nikanthan Literary Society, 2, 3, 4.



THE
ZENITH



SENIOR CLASS

GILBERT GRAY PRIMM

THOMASVILLE, N. C.

A.B.

A T P

W. A. A., 1; Artemesian Literary Society, 3, 4;
Pan-Hellenic Council, 4.



DANIEL C. SHARPE

GREENSBORO, N. C.

B.S. in Business Administration

I T K

Akrothinian Literary Society, 1, 2, 3, 4; Class Vice-
President, 2; Cheerleader, 3; Class President, 4.



THOMAS EDWARD STRICKLAND

HIGH POINT, N. C.

A.B.

Thalean Literary Society, 1, 2, 3, 4; Ministerial
Association, 1, 2, 3, 4; Christian Endeavor, 1.



FRANCES LOUISE SURRATT

NEWSOM, N. C.

A.B.

Pfeiffer Junior College, 1, 2; Artemesian Literary
Society, 3, 4; Footlighters, 4; Secretary, 4; Christian
Endeavor, 3, 4.

SENIOR CLASS

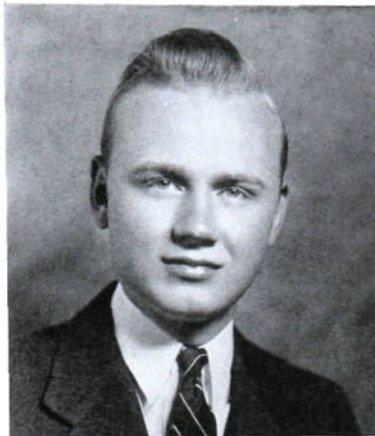
JAMES ALLEN THACKER

HIGH POINT, N. C.

A.B.

I T K

Student Council, 1, 4; Thalean Literary Society, 3, 4; Marshal, 3; President Dormitory Council, 4; ZENITH, 3; Business Manager, 4; President Pan-Hellenic Council, 4; Who's Who, 4; Christian Endeavor Society, 3, 4; Forensic Council, 3; Dramatic Club, 3, 4.



DIXIE THOMAS

HIGH POINT, N. C.

A.B.

E A Θ

Modern Priscilla Club, 4.



SARA FORREST THOMPSON

THOMASVILLE, N. C.

A.B.

T P

Artemesian Literary Society, 1, 2, 3, 4; Christian Endeavor, 1, 2, 3, 4; W. A. A., 1, 2, 3, 4.



GLENN GOLD TOWERY

LATTIMORE, N. C.

A.B.

I T K

Basketball, 1, 2, 3, 4; Baseball, 1, 2, 3, 4; Block "H" Club, 2, 3, 4.



THE
ZENITH



SENIOR CLASS

RUPERT GILMER WAGONER

BROWN'S SUMMIT, N. C.

A.B.

I T K

Thalean Literary Society, 1, 2, 3, 4; Marshal, 4;
Soccer, 1, 2, 3; Baseball, 2, 3, 4; Christian En-
deavor, 1, 2, 3, 4; Block "H" Club, 3, 4.

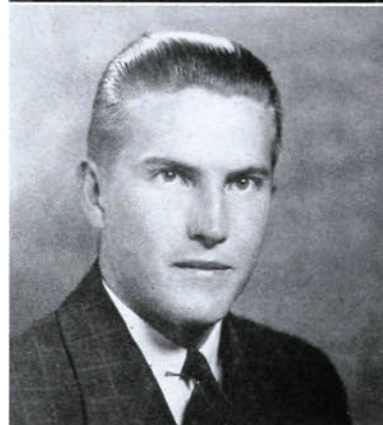


GERALDINE M. WALKER

HIGH POINT, N. C.

A.B.

Woman's College, 1, 2, 3.



LINDSAY L. WALKER

WINSTON-SALEM, N. C.

B.S. in Business Administration

I T K

Thalean Literary Society, 3, 4.



MARGARET WALTON

ASHEBORO, N. C.

A.B.

Nikanthan Literary Society, 1, 2, 3, 4; Secretary, 2;
Christian Endeavor, 1, 2, 3, 4; Y. W. C. A., 1;
W. A. A., 1, 2, 3, 4.

SENIOR CLASS

PATSIE WARD

MADISON, N. C.
A.B.

Nikanthan Literary Society, 1, 2, 3, 4; Vice-President, 3; Critic, 4; Christian Endeavor, 1, 2, 3, 4; Y. W. C. A., 1; W. A. A., 1, 2, 3, 4; Hiking Manager, 4.



S. J. WELBORN, JR.

THOMASVILLE, N. C.

B.S. in Chemistry

Freshman Basketball, 1; Akrothinian Literary Society, 3, 4.



CHARLES D. WHITE

HIGH POINT, N. C.

A.B.

Ministerial Association, 1, 2, 3, 4; Secretary, 1, 2; President, 2; Reporter, 4.



MARY ALYCE WILLIAMS

COFIELD, N. C.

A.B.

Chowan, 1, 2; Christian Endeavor Society, 3, 4; Nikanthan Literary Society, 3, 4.

THE
ZENITH

Alma Mater

*In our hearts we hold the mem'ry
Of a place we love the best;
O'er it waves the purple banner,
Emblem of its fearlessness.*

*When we're on the field of battle,
When we strive for praise to thee;
May our teams be undefeated,
Ours the crown of victory.*

CHORUS

*We praise thy name and honor true,
They stand for loyalty and love;
May yours be fame that to you is due,
For we will always fight,
We want the right
To uphold thy standards high;
To give the best we have to thee,
Mem'ries of you we will cherish,
H. P. C.*

Junior Class

OFFICERS

FRANK HARTMAN *President*

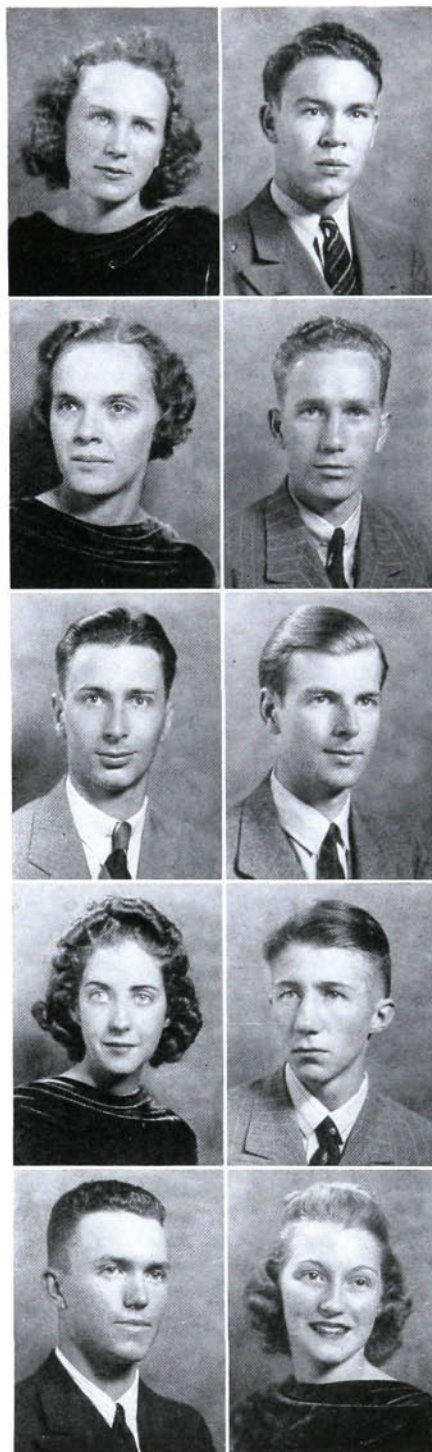
MARC LOVELACE *Vice-President*

ESTHER MIRAN *Secretary*

NELL HOLTON *Treasurer*



Holton, Hartman, Miran, Lovelace



JUNIOR CLASS



BANKS APPLE

KERNERSVILLE, N. C.

FORRESTER C. AUMAN

SEAGROVE, N. C.

HELEN G. BLACKBURN

GREENSBORO, N. C.

BEVERLY BOND

HAYNESVILLE, LA.

JOHN CAGLE

HIGH POINT, N. C.

LAWRENCE W. CARTER

NEW YORK, N. Y.

MARY HILLIARD CARRAWAY

HIGH POINT, N. C.

JAMES J. CLARK

HIGH POINT, N. C.

ROBY CLODFELTER

WALLBURG, N. C.

REBECCA COBLE

HAW RIVER, N. C.

JUNIOR CLASS

LOUISE COLE
WISE, N. C.



ADELAIDE CONNER
DANVILLE, VA.



ANNA ELIZABETH DARR
THOMASVILLE, N. C.

GEORGE G. ELKINS
LIBERTY, N. C.



JENNIE RUTH FISHER
RICHFIELD, N. C.

SIBYL FOWLER
PINNACLE, N. C.



SEYMOUR FRANKLIN
FREEPORT, N. Y.

REGINA FROST
HIGH POINT, N. C.



RUTH V. FUTRELLE
GREENSBORO, N. C.

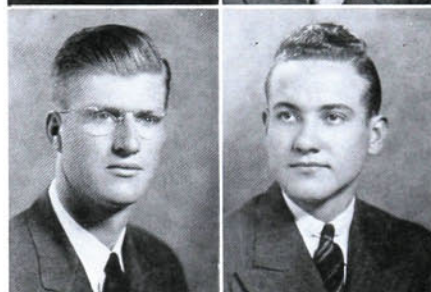
H. B. GARLINGTON
PALLOCK, LA.

JUNIOR CLASS



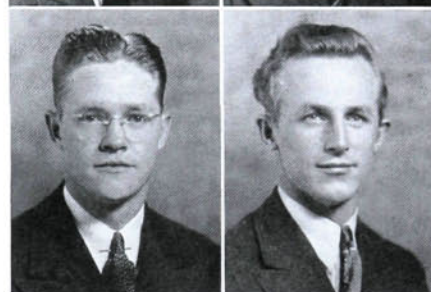
MILDRED GRANT

GARYSBURG, N. C.



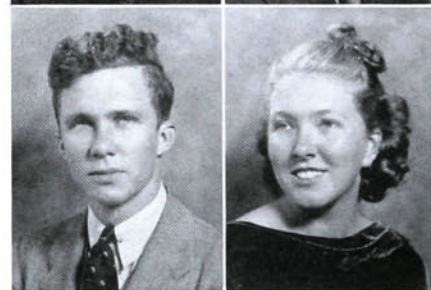
JOE H. GRAY

HIGH POINT, N. C.



HUGH MAURICE HAMPTON

RUTHERFORDTON, N. C.



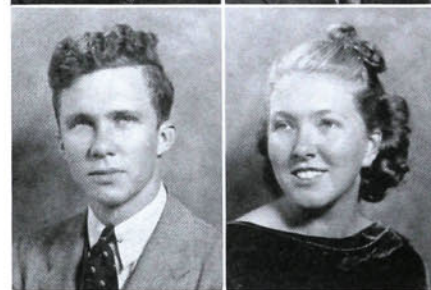
FRANK HARTMAN

ADVANCE, N. C.



FRANK HEGE

LEXINGTON, N. C.



JOSEPH MALLARD HILLIARD

THOMASVILLE, N. C.



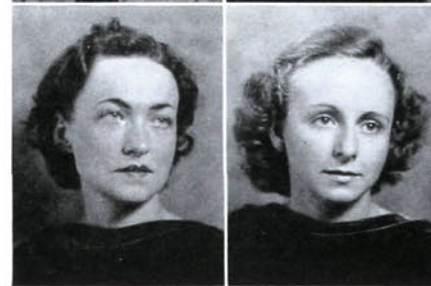
REGINALD HINSHAW

HIGH POINT, N. C.



NELL HOLTON

HIGH POINT, N. C.



LILLY HOPKINS

NORWOOD, N. C.



ANNIE HOWELL

THOMASVILLE, N. C.

JUNIOR CLASS

ROBERT L. JOHNSON
DENTON, N. C.

ALICE JONES
THOMASVILLE, N. C.

ESTHER ELIZABETH KIVETT
HIGH POINT, N. C.

LUCY KING
LITTLETON, N. C.

MABEL E. KOONTZ
HIGH POINT, N. C.

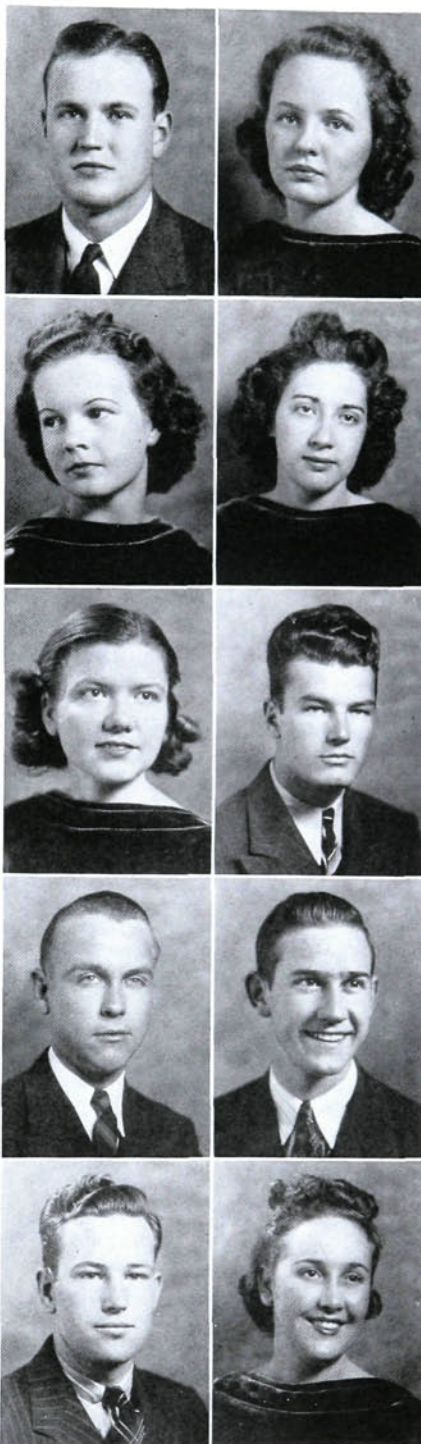
TOM LAMAR
HIGH POINT, N. C.

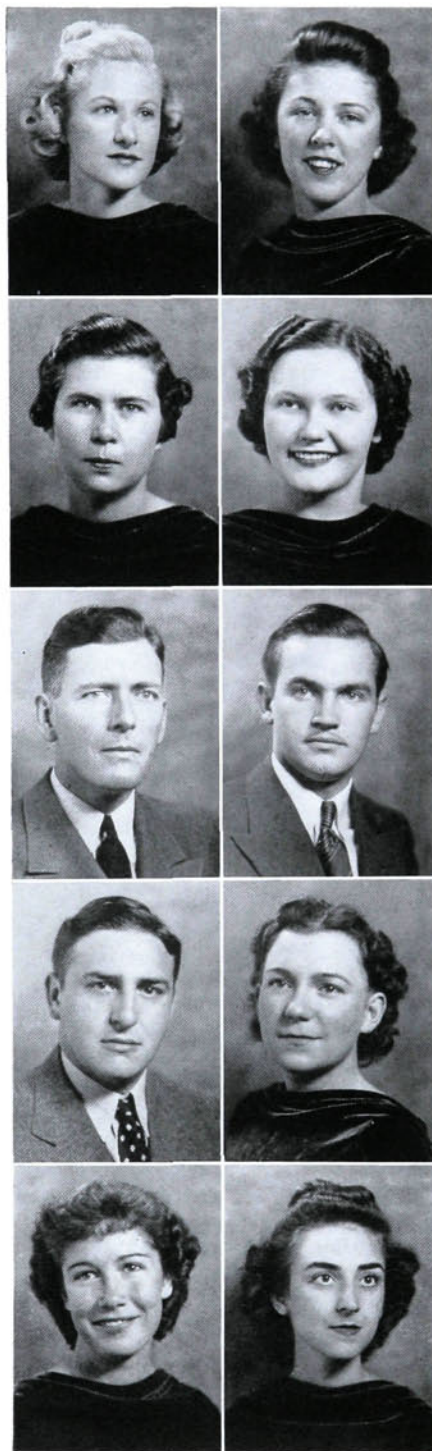
WILLIAM LOCKE
ENFIELD, N. C.

MARC LOVELACE
HIGH POINT, N. C.

WILLIAM HORACE MCKINNEY
HIGH POINT, N. C.

DANEASE MANLEY
HIGH POINT, N. C.





JUNIOR CLASS

DORIS METGER

FROSTBURG, MD.

ESTHER MIRAN

TORRINGTON, CONN.

NELLIE MOORE

DELCO, N. C.

RUTH MYERS

HIGH POINT, N. C.

B. S. NIFONG

WINSTON-SALEM, N. C.

JAMES ODUM

MT. OLIVE, N. C.

ALFRED OLIVER

HIGH POINT, N. C.

MARY ALICE OVERMAN

HIGH POINT, N. C.

POLLY PALMER

GREENSBORO, N. C.

MARY RUTH PEELER

LOVETTSVILLE, VA.

JUNIOR CLASS

WILLIAM EDGAR POOVEY
HIGH POINT, N. C.

WILLIAM RENNIE
METHUEN, MASS.

P. H. SCARBORO, JR.
CONCORD, N. C.

CHARLES SHARPE
GREENSBORO, N. C.

RICHARD SHORT
HIGH POINT, N. C.

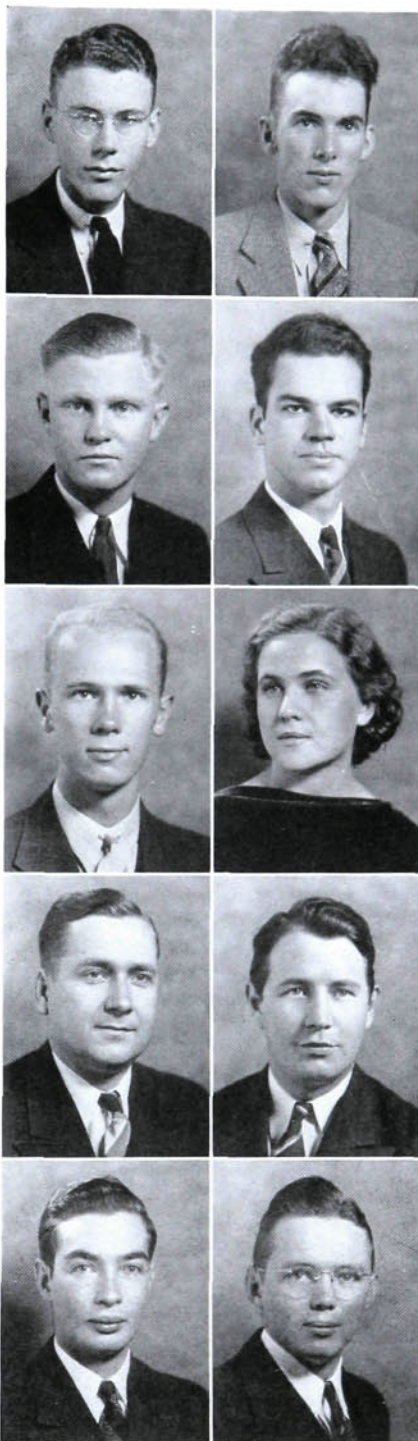
MARGARET V. SINK
HIGH POINT, N. C.

ERNEST M. SMITH
HIGH POINT, N. C.

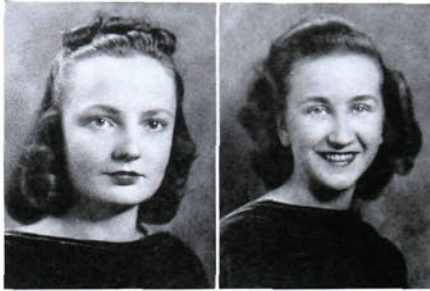
LEE ROY SPENCER, JR.
HIGH POINT, N. C.

RICHARD STOLACK
BROOKLYN, N. Y.

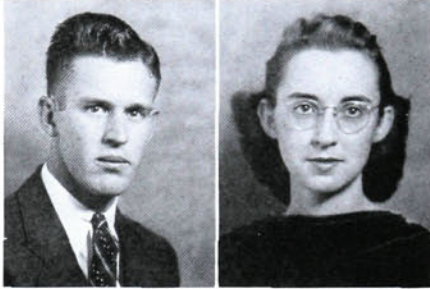
JESSE SWINSON
CHARLOTTE, N. C.



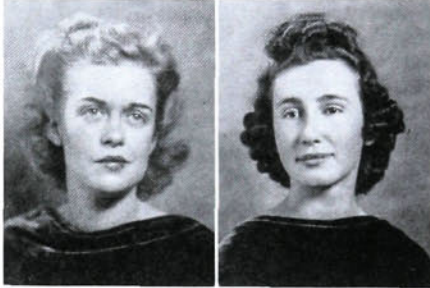
JUNIOR CLASS



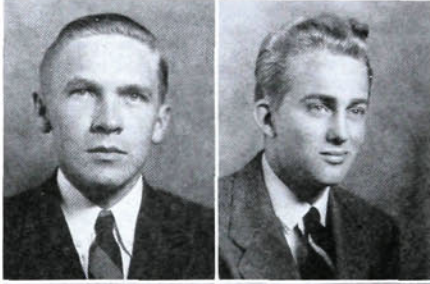
RUTH MERELYN THOMPSON
THOMASVILLE, N. C.



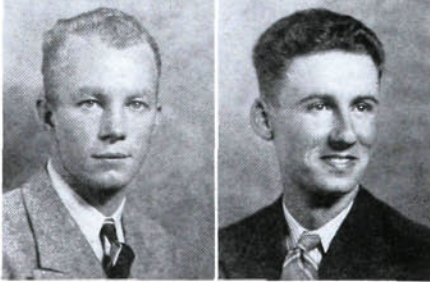
EDITH VANCE
HIGH POINT, N. C.



FOY WARFFORD
SOUTHMONT, N. C.



HELEN WALLER
KINSTON, N. C.



VEREL WARD
LIBERTY, N. C.



JOSEPHINE WEANT
HIGH POINT, N. C.



EDGAR S. WELBORN
THOMASVILLE, N. C.

ARTHUR YORK, JR.
HIGH POINT, N. C.

ELMER W. YOUNG
HIGH POINT, N. C.

HAL YOW
GIBSONVILLE, N. C.

Sophomore Class

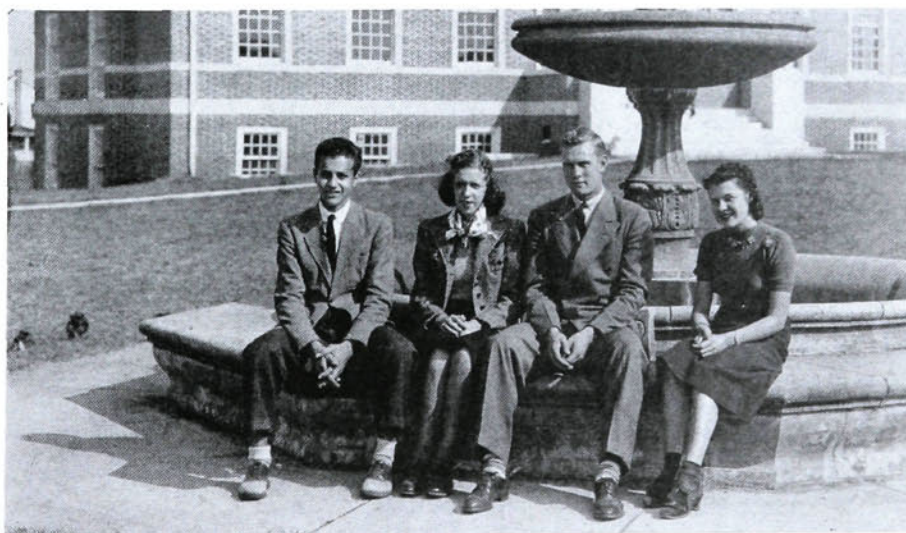
OFFICERS

C. A. WATTS *President*

MORTON SAMET *Vice-President*

NANNABETH NULL *Secretary*

LUCILLE JOHNSON *Treasurer*



Samet, Johnson, Watts, Null

SOPHOMORE CLASS

EVELYN ATKINS	LOUISE ELLISON	RUTH MCKENZIE
JANE AUSTIN	VESTAL FERGUSON	BYRDELLE NICHOLAS
LORRAINE BAART	NORMA GRAHAM	NANNABETH NULL
MARGARET BAIRD	JANE GROOME	SARA OWEN
SARA BRANDON	DIXIE HELMS	CELESTE PAYNE
LUCILLE BRILES	RUTH HEPLER	CATHERINE PHILLIPS
HELEN BROWN	SUSIE HESTER	CLEO PINNIX
WINIFRED BURTON	DORIS HOLMES	JEANNE RANKIN
JANET CAMPBELL	LUCILLE JOHNSON	BETTY SECHREST
ALICE CHANDLER	PAULINE KENNETT	WILMA SINK
MARY LUCILLE CRAVEN	NELLIE KITTRELL	RACHEL SPAINHOUR
EDITH CRIBBS	HAZEL LASSITER	DOROTHY STEPHENSON
MARY SNOW CRIDLEBAUGH	DOROTHY LEONARD	LOUISE TEAGUE
HELEN CROWDER	BLANCHE LINVILLE	CLEO TEMPLETON
CATHERINE ELLISON	MILDRED MARSH	MARGARET WADE
	RUTH MURPHY	BETSY WAGGER
	DOT MCCALL	JANE WEATHERMAN
	MARGUERITE MCCASKILL	ELEANOR WELCH

GIRLS



GRAHAM ARMSTRONG
HAYDEN BAILEY
LESTER BALLARD
BILL BENNETT
PAUL HENRY BLAIR
OLIN R. BLICKENSDERFER
DARIEL BURCHFIELD
LAWRENCE BYRUM
ELMER CASHATT
BRUCE CARRAWAY
ROBERT CLIFTON
SAM COBLE
CHARLES COCHRANE
JOE COLLETTE
PAUL DEATON
ALBERT EARLE
GARLAND ELLIS
DELBERT EVERHART
JOHN W. FARLOW
ARRINGTON FARLOW
HENRY FERREE
VERNON FORNEY
BROWN FOUTS

HOWARD GARMON
HORACE GILES
MARSE GRANT
WILLIAM HATCHER
M. T. HICKS, JR.
RALPH HIGHT
SYLVESTER HOHN
CLAUDE HOLLOWAY
LAWRENCE HOLT
HENRY HUBBLE
N. C. JOHNSON, JR.
WILLIAM KEEN
ARTHUR KENNEDY, JR.
MARVIN KIVETT
BURKE KOONTZ
JACK D. LEE
JUNE LUTTERLOH
MARCEL MALFREGEOT
JOSEPH MAY
JOHN MORAN
FRANK MURRAY
ARTIE OCORR
DAVID PETREE

BOYS

RENFROW PIRTLE
JOHN REYNOLDS
WORTH ROYALS
MORTON SAMET
PAT SECRET
COBLE SHOFFNER
ROBERT SICELOFF
ROBERT SNIDER
WILLIS A. TARVER
HENRY TERRY
ROBERT TROXLER
LAWRENCE WAGONER
C. A. WATTS
ROBERT WELBORNE
WILLIE WELBORNE
MILTON WENGER
ARCHIE WILLIAMS
JAMES WILLIAMSON
BOYCE WYNN
FRANK YOUNG

SOPHOMORE CLASS



Appreciation

To

Miss Vera Idol

Mr. W. A. Daniel

Mr. R. G. Benson

Mr. T. N. Daniel

Mr. M. F. Dunbar

The ZENITH staff is grateful for your
kind cooperation and gracious assistance
in the preparation of this book.



Freshman Class

OFFICERS

FRANK HARRIS *President*

WINIFRED LAMAR *Vice-President*

IRENE PARKER *Secretary*

JANE REID *Treasurer*



Harris, Parker, Reid, Lamar



FRESHMAN CLASS

HARRIETT BERRY
GRACE BIVINS
VIRGINIA BRADY
HELEN BREWER
JEWELL CAMPBELL
KATHLEEN CHEEK
MARY CLINARD
ANNE MAXINE COLE
CLARA LOUISE COX
CLADORA CURTIS
MARGARET CURTIS
MAURICE DAVIS
EVELYN DAVIS
WILLIE EDWARDS
FLORENCE ELKINS
SARAH LOU GERRINGER
LOUELLA ANGELL
HELEN GIBSON

RUTH GOOD
LOUISE GRIFFITH
DOROTHY GUETH
AUDREY GUTHRIE
RUTH GUYER
MURIEL HILTON
ELIZABETH HOLDEN
JOLEA HOLT
FRANCES HOWELL
VIRGINIA HUNT
NANCY JOHNSON
CLOYCE LORRAINE KEY
CHRISTINE KISER
ANNE KITCHENS
PEGGY LANCASTER
RUTH MAY
RUTH MARION
JOYCE MCCANDLESS
MARY LEE NALLEY
CAROLYN NIFONG
MARGARET NIFONG

IRENE PARKER
ETHELDA NELLINE PETERS
JEWELL MARIE PHILLIPS
RUTH PHILLIPS
SUE EVELYN POE
DOROTHY PULLIAM
JUANITA RAGLAND
GERALDINE RASH
MARY HARRISON REDDING
JANE REID
LOUISE RICH
FRANCES SCRUGGS
EVELYN SECHREST
FRANCES SPAINHOUR
LUCY SPARGER
LUCY NEAL THAYER
MARY TOWNSEND
CHARLOTTE VARNER
EMMA WHITAKER
LILLY WHITAKER
FRANCES WOOD

GIRLS



RICHARD C. ADAMS
 WILLIAM ALLRED
 KENNER AMOS
 BOB ANDREWS
 CHARLES BRANN
 SIDNEY R. BRECHER
 JOHN BROWN
 PHIL BUGLIONE
 BEN BULLA
 MANLY BYERLY
 MORRIS CAMPBELL
 FORREST CATES
 BANKS CHILTON
 AUSTIN CLODFELTER
 MILLARD COBLE
 EDWARD COLE
 LEE COLLINS
 GEORGE CONNOR
 JEROME COUNIHAN
 RALPH COX
 WILLIE EDWARDS
 BANKS EVANS
 FRANK FERNANDEZ
 RALPH J. FERREE
 RANKIN FIKE
 DAVID FINK
 JESSIE FITCH
 WILLIAM FRAZIER
 CECIL FREEMAN
 JOHN GILMORE
 WARREN GODWIN
 ED GREESON

GUY GRIMES
 JOHN M. HAMM
 FRANK HARRIS
 ROBERT B. HICKS
 OSWALD HODGES
 ROBERT HOLT
 ARNOLD HUFF
 RUSSELL HUGHES
 JESSE INGRAM
 LEWIS JARVIS
 LLOYD H. JOHNSON
 R. S. KIGER
 TOMMY KINASZCZUK
 HAROLD KING
 CORDELL KIRKMAN
 WINFRED LAMAR
 ELVIN LEWIS
 LACY LEWIS, JR.
 JESSE LOWE
 ARNOLD LOYD
 B. E. MENDENHALL
 ROBERT MERHIGE, JR.
 FRED MILLS
 JAMES MOORE
 JIMMY MCCALL
 THOMAS McDOWELL
 MELVILLE ODUM
 BOB OVERMAN
 BILL PATTERSON
 JAMES PAYNE
 WADE PHELPS
 MILTON PRICE

BOYS

JACK PUGH
 HARLAN REID
 CHARLES RICHARDSON
 MALCOLM RILEY
 VAN ROYALS
 JAMES SCOTTEN
 CLAYTON SECHLER
 EMANUEL SEIFE
 JOE SHEETS
 BERNARD ERNEST SHUFELT
 CLARENCE SMITH
 VANCE SMITH
 ISAAC STONE
 ALBERT SUGGS
 ELLIS SUTTON
 FLOYD TAYLOR
 JOHN THOMPSON
 KENNETH WALL
 L. H. WARREN, JR.
 DAVID WEATHERLY
 GEORGE WELBORN
 MAX H. WHITE
 RANDALL WHITE
 HARLEY WILLIAMS
 JOHN WILLIAMS
 GILE WOOD
 BRANDON YORK
 PAUL YOUNTS

FRESHMAN CLASS



UNCLASSIFIED STUDENTS



NICK BAMBALIS
VICTOR Q. CAGLE

MRS. VERTA I. COE
JAMES DURLAND
HILDRETH GABRIEL
ROBERT HARTLEY
MARGARET H. JARRELL
WILLIAM M. JARRELL
JAMES ELWOOD JONES
TOM LAMAR
ALFRED NEIKIND
MRS. MAUDE PROCTOR

MRS. A. M. RICHARDSON
MRS. N. S. STIREWALT



MUSIC SPECIALS



WINIFRED BODIE
MRS. C. R. HINSHAW

NELLE M. HUMPHREYS
GEORGE MEREDITH
R. M. PADGETT
MYRTLE TITMAN

MRS. MARGARET F. TAYLORS
MRS. LYNN WHITNEY

ART STUDENTS

IDA MAE ALEXANDER

ANNIE HOWELL

MARGARET BURNSIDE

VIRGINIA HUNT

MRS. VERTA I. COE

LUCY KING

LOUISE COLE

JACQUELINE KINNEY

SIBYL FOWLER

ELIZABETH KIVETT

HAZAR GLOVER

NELLIE MOORE

MILDRED GRANT

SARA LOU PEOPLES

AUDREY GUTHRIE

MRS. A. M. RICHARDSON

DIXIE HELMS

LOUISE SURRATT

JOSEPHINE WEANT



Organizations



STUDENT GOVERNMENT

Student government was organized at High Point College in 1934. Since this beginning in a small way, the activities of student government have increased and grown until now the Student Council is one of the most important groups on the campus. The council is composed of a president, vice-president, secretary, a dormitory and a day student representative from each class, and the presidents of the two dormitory councils. Under the capable guidance of its leaders, the council has improved social activities on the campus, the chief of these being the bi-weekly dances and the parties held in the library basement.



DWIGHT MORGAN



Merhige, Spainhour, Thacker, Peeler, Ward, York
Gueth, Johnson, Morgan, Lindley



Thacker, Ocorr, Lewis, Yow, Wenger, Hege, Hauser

DORMITORY GOVERNING BODIES

EVELYN LINDLEY	<i>President</i>	ALLEN THACKER	<i>President</i>
MARY MITCHELL BAITY . . .	<i>Vice-President</i>	FRANK HEGE	<i>Vice-President</i>
HELEN WALLER	<i>Secretary</i>	ARTHUR OCORR	<i>Secretary</i>

Hunt, Waller, Lindley, Johnson, Miran





Adams, White, Kinney, Russell, Primm, Hinshaw, Jones, Harville, Thacker, Henderson, Mourane, Allred

OFFICERS

ALLEN THACKER	President
DOROTHY JONES	Vice-President
GILBERT PRIMM	Secretary

REPRESENTATIVES

<i>Sigma Alpha Phi</i>	<i>Alpha Theta Psi</i>	<i>Theta Phi</i>
MISS JANET RUSSELL JACQUELINE KINNEY	MRS. ALICE PAIGE WHITE GILBERT PRIMM	MISS LOUISE ADAMS DOROTHY JONES
<i>Iota Tau Kappa</i>	<i>Epsilon Eta Phi</i>	<i>Delta Alpha Epsilon</i>
DR. C. R. HINSHAW ALLEN THACKER	PROF. J. H. MOURANE CHARLES HARVILLE	PROF. J. H. ALLRED M. C. HENDERSON, JR.

This year the Pan-Hellenic Council under the leadership of its president, Allen Thacker, has continued and improved upon the fine work done by the previous councils. Composed of a student and faculty representative from each organization, the council is an advisory and governing group that controls the activities of the six social organizations on the campus. During the past year it has functioned well, as shown by the improved type of rushing, socials, and by a better spirit among the social clubs.

PAN-HELLENIC COUNCIL

THE ZENITH



EDITORIAL STAFF

BANKS APPLE	MARY LOUISE GIBSON
MARY MITCHELL BAITY	REGINALD HINSHAW
HARRY G. BRIGHT	G. W. HOLMES, III

FRANCES MUSE

ARTIE OCORR

HELEN WALLER

VEREL WARD

BUSINESS STAFF

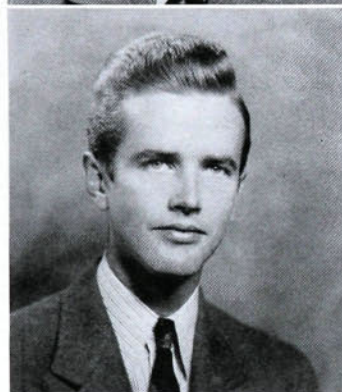
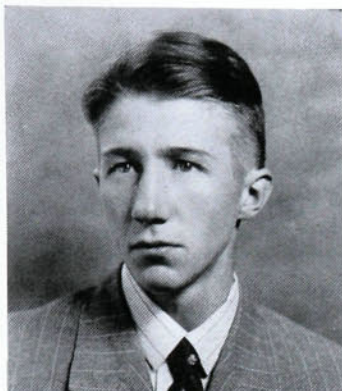
ALBERT EARLE	GEORGE G. ELKINS
JOHN REYNOLDS	
JAMES ALLEN THACKER	



MUSE, Editor

THACKER, Business Manager





CLARK, *Editor*
MORGAN, *Business Manager*

THE HI-PO

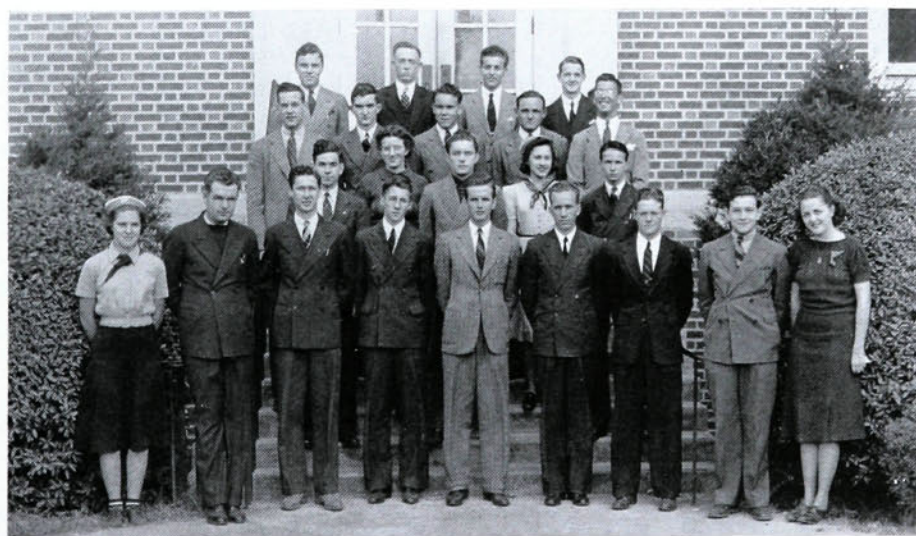


EDITORIAL STAFF

FORRESTER AUMAN	A. R. BOOKOUT
HELEN BATES	BEN BULLA
BEVERLY BOND	JAMES J. CLARK
VIRGINIA CURRY	
ARTHUR EDWARDS	
SEYMOUR FRANKLIN	
MARSE GRANT	
A. C. LOVELACE	
NANCY PARHAM	
IRENE PARKER	
MORTON SAMET	
MILTON WENGER	

BUSINESS STAFF

FRANK HEGE	LAWRENCE HOLT
DWIGHT MORGAN	





MISS JANET HALL
Voice Director

VOICE DEPARTMENT

Miss Janet Hall, head of the Voice Department, since her coming to High Point College in the spring of 1938, has accomplished work which is very praiseworthy. Direct from study at the Juilliard School of Music in New York City and extensive study under private tutors, Miss Hall has proved a very efficient instructor in vocal study.

Since her arrival at High Point College, Miss Hall has greatly aided in the upbuilding of the Voice Department. A gifted and well-known singer herself, she has presented several recitals both on and off campus which were all enthusiastically received, thereby adding greatly to the reputation of the department.

Instruction in voice culture is open to the students working toward a B.S. Degree in Public School Music and to students who wish to develop their voice through private lessons.

Perhaps no field in the college curriculum has aroused more interest at High Point than has the field of voice culture. The increasing numbers of young men and young women interested in the various studies of this department have necessitated its enlargement.



MISS JANET RUSSELL
Choir Director

A CAPELLA CHOIR

One of the best liked organizations on the college campus is the A Capella Choir, directed by Miss Janet Russell, head of the music department. This choir has traveled extensively, making a fine reputation for itself and for the college.

In the fall of the year tryouts for the various types of voices are held, with the result that the freshmen usually take over the vacated positions. After the preliminary tryouts, further trials are held until the final selections are made. Aside from those in the actual choir, there are alternates who receive the same training as the regular members. After practicing throughout the early part of the year, concerts throughout this and other parts of the country are given during the second semester.

During the past several years the choir has traveled extensively, going as far north as New York and south to Florida. On these long tours, stop-overs are made for concerts at various cities and towns. The press reports from such cities as Norfolk, Richmond, Washington, Birmingham, and Montgomery have lauded the A Capella Choir and its director as one of the best organizations of its kind in the country. Last year the feature trip was to Washington, D. C., while many week-end trips were taken throughout the state.

A CAPELLA CHOIR

OFFICERS

GEORGE ELKINS *President*
 VIOLET JENKINS *Vice-President*
 SUSIE HESTER *Secretary and Treasurer*

First Soprano

LOUISE ELLISON
 MARGARET NIFONG
 NANNABETH NULL
 CHARLOTTE VARNER
 ELEANOR WELCH

Second Soprano

EVELYN ATKINS
 DORIS METGER
 RUTH PHILLIPS
 DOROTHY STEPHENSON
 JANE WEATHERMAN

First Alto

NELL HOLTON
 SUSIE HESTER
 ALICE OVERMAN
 MYRTLE POORE

Second Alto

ALICE HOFFMAN
 VIOLET JENKINS
 EDITH VANCE

First Tenor

BANKS CHILTON
 LAWRENCE BYRUM
 HOWARD LINK

Second Tenor

BEVERLY BOND
 MILTON WENGER
 HENRY VANBYLEVELT

First Bass

JOE MAY
 TOMMY KINASZCZUK
 VANCE SMITH
 LAWRENCE HOLT

Second Bass

VERNON FORNEY
 OLIN BLICKENSERFER
 GEORGE ELKINS
 OWEN LINDLEY



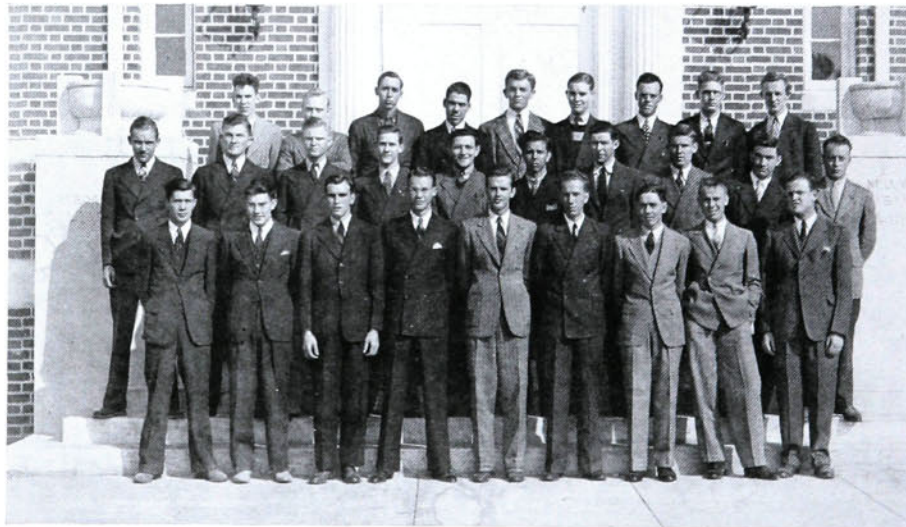
THALEAN LITERARY SOCIETY

OFFICERS

A. C. LOVELACE, JR.	President
OWEN LINDLEY	Vice-President
MARC LOVELACE	Secretary
VAUGHN BOONE	Treasurer

ROLL

OLIN BLICKENSERFER	M. C. HENDERSON, JR.	JACK PUGH
BEVERLY BOND	JOSEPH HILLIARD	WILLIAM RENNIE
VAUGHN BOONE	OSWALD HODGES	P. H. SCARBORO, JR.
PHIL BUGLIONE	G. W. HOLMES, III	T. E. STRICKLAND
MORRIS CAMPBELL	ROBERT JOHNSON	BERNARD SHUFELT
ELMER CASHATT	JAMES T. JONES	WILLIS TARVER
BANKS CHILTON	HAROLD KING	ALLEN THACKER
CHARLES CURTIS	TOMMY KINASZCZUK	GILMER WAGONER
JOHN DAVIS	ELVIN LEWIS	LAWRENCE WAGONER
HARMON DILLARD	OWEN LINDLEY	KENNETH WALL
ALBERT EARLE	BILLY LOCKE	LINDSAY WALKER
ARTHUR EDWARDS	A. C. LOVELACE, JR.	MILTON WENGER
PAUL HAMILTON	MARC LOVELACE	JOHN WILLIAMS
	DWIGHT MORGAN	
	RENFROW PIRTLE	





OFFICERS

VIRGINIA DIXON CURRY	President
ESTHER ELIZABETH KIVETT	Vice-President
CATHERINE PHILLIPS	Secretary
HELEN WALLER	Treasurer

ROLL

LOUELLA ANGEL	NANNIE GOODMAN	ALICE OVERMAN
EVELYN ATKINS	AUDREY GUTHRIE	POLLY PALMER
HELEN BATES	DORIS HOLMES	CELESTE PAYNE
HELEN BREWER	LILLY HOPKINS	ETHELDA PETERS
GERTRUDE BROWN	FRANCES HOWELL	CATHERINE PHILLIPS
HELEN BROWN	VIRGINIA HUNT	JEWEL PHILLIPS
SAIDEE BUNN	LUCILLE JOHNSON	MYRTLE POORE
MARGARET BURNSIDE	NANCY JOHNSON	JUANITA RAGLAND
PAULINE BYRUM	LEA JOYNER	GERALDINE RASH
JEWEL CAMPBELL	RUBY KELLER	MARGARET SINK
KATHLEEN CHEEK	CLOYCE KEY	WILMA SINK
VIRGINIA COBLE	EVELYN LINDLEY	RACHEL SPAINHOUR
MAXINE COLE	BLANCHE LINVILLE	LUCY SPARGER
ADELAIDE CONNOR	KITTY KITTRELL	CLEO TEMPLETON
CLARA COX	ELIZABETH KIVETT	LUCY NEAL THAYER
LUCILLE CRAVEN	MARGUERITE MCCASKILL	MARY TOWNSEND
VIRGINIA CURRY	RUTH MARION	CHARLOTTE VARNER
MARGARET CURTIS	RUTH MYERS	MARGARET WADE
LOUISE ELLISON	ESTHER MIRAN	HELEN WALLER
FRANCES EDWARDS	NELLIE MOORE	MARGARET WALTON
VESTAL FERGUSON	MARY LEE NALLEY	PATSIE WARD
VERA MAE FERREE	BYRDELLE NICHOLAS	VEREL WARD
SIBYL FOWLER	CAROLINE NIFONG	JOSEPHINE WEANT
MILDRED GRANT	MARGARET NIFONG	ELEANOR WELCH
SARAH LOU GERRINGER	NANNABETH NULL	MARY ALYCE WILLIAMS

NIKANTHAN LITERARY SOCIETY

AKROTHINIAN LITERARY SOCIETY

OFFICERS

PORTER HAUSER *President*
 GEORGE ELKINS *Vice-President*
 ARCHIE WILLIAMS *Secretary*
 E. S. WELBORN *Treasurer*

ROLL

BOB ANDREWS	JOHN HOHN	MORTON SAMET
GRAHAM ARMSTRONG	LAWRENCE HOLT	EMANUEL SEIFE
FORRESTER AUMAN	ROBERT HOLT	DANIEL C. SHARPE
LAWRENCE BYRUM	BILL KEENE	JOE SHEETS
JEROME COUNIHAN	HAROLD KING	LEE SPENCER
GEORGE CRAVER	BURKE KOONTZ	RICHARD STOLACK
BANKS EVANS	JACK LEE	JOHN THOMPSON
JOE GRAY	HOWARD LINK	ROBERT TROXLER
FRANK HARRIS	ROBERT MERHIGE, JR.	FOY WARFFORD
HUGH HAMPTON	JAMES MOORE	C. A. WATTS
PORTER HAUSER	BOB OVERMAN	E. S. WELBORN
FRANK HEGE	BILL PATTERSON	ARCHIE G. WILLIAMS
REGINALD HINSHAW	ROGER PEELER	HAL YOW
	DAVID PETREE	
	EDGAR POOVEY	
	MALCOLM RILEY	





OFFICERS

HELEN RAE HOLTON	President
RUTH MERELYN THOMPSON	Vice-President
PAULINE KENNETT	Secretary
EDITH VANCE	Treasurer

ROLL

JANE AUSTIN	MARY LOUISE GIBSON	DORIS METGER
MARY MITCHELL BAITY	NORMA GRAHAM	FRANCES MUSE
LORRAINE BAART	LOUISE GRIFFITH	DOROTHY MCCALL
HARRIETT BERRY	JANE GROOME	JOYCE MCCANDLESS
GRACE BIVENS	DOROTHY GUETH	RUTH MCKENZIE
VIRGINIA BRADY	RUTH HEPLER	SARA OWEN
SARA BRANDON	SUSIE HESTER	NANCY PARHAM
LUCILLE BRILES	ELIZABETH HOLDEN	IRENE PARKER
MARY H. CARRAWAY	HELEN RAE HOLTON	RUTH PEELER
ALICE CHANDLER	NELL HOLTON	SARA LOU PEOPLES
REBECCA COBLE	ANNIE HOWELL	RUTH PHILLIPS
LOUISE COLE	LUCILLE INGRAM	CLEO PINNIX
MARY SNOW CRIDLEBAUGH	JANICE JENKINS	SUE EVELYN POE
HELEN CROWDER	VIOLET JENKINS	GILBERT PRIMM
HAZEL CRUTCHFIELD	ALICE JONES	JEANNE RANKIN
CLADORA CURTIS	DOROTHY JONES	JANE REID
ELIZABETH DARR	PAULINE KENNETT	BETTY SECHREST
HELEN DAVIS	LUCY KING	FRANCES SCRUGGS
MAURICE DAVIS	JACQUELINE KINNEY	DOROTHY STEPHENSON
MARGUERITE DEYOE	ANNE KITCHENS	LOUISE SURRATT
VIRGINIA DIXON	DOROTHY LEONARD	LOUISE TEAGUE
WILLIE EDWARDS	PEGGY LANCASTER	RUTH M. THOMPSON
FLORENCE ELKINS	HAZEL LASSITER	SARAH F. THOMPSON
CATHERINE ELLISON	DANEASE MANLEY	EDITH VANCE
JENNIE RUTH FISHER	OLGA MARLETTE	BETSY DEAN WAGGER
REGINA FROST	MILDRED MARSH	JANE WEATHERMAN

ARTEMESIAN LITERARY SOCIETY



ROLL

BOB ANDREWS
FORRESTER AUMAN
MARY MITCHELL BAITY
JIM BARLOW
HELEN MOSELLE BATES
GRAVE BIVINS
BEVERLY BOND
J. VAUGHN BOONE
LUCILLE BRILES
GERTRUDE BROWN
HELEN BROWN
PHIL BUGLIONE
BEN BULLA
SAIDEE BUNN
PAULINE BYRUM
REBECCA COBLE
ANNE MAXINE COLE
LOUISE COLE
CLARA LOUISE COX
LUCILLE CRAVEN
VIRGINIA DIXON CURRY
MARGUERITE DEYOE
FRANCES EDWARDS
GEORGE G. ELKINS
VESTAL FERGUSON
SIBYL FOWLER

SARA LOU GERRINGER
MARY LOUISE GIBSON
MILDRED GRANT
AUDREY GUTHRIE
JOHN M. HAMM
FRANK HARRIS
ROBERT HENDERSON
SUSIE HESTER
DORIS HOLMES
G. W. HOLMES, III
LAWRENCE HOLT
ROBERT HOLT
LILLY HOPKINS
VIRGINIA HUNT
LUCILLE JOHNSON
JAMES THOMPSON JONES
LEA JOYNER
LUCY KING
NELLIE GRAY KITTRELL
LACY S. LEWIS, JR.
EVELYN LINDLEY
OWEN P. LINDLEY
OLGA MARLETTE
ESTHER MIRAN
NELLIE GRAHAM MOORE
FRANCES MUSE
MARY LEE NALLEY

BYRDELLE NICHOLAS
NANNABETH NULL
NANCY PARHAM
BILL PATTERSON
RUTH PEELER
SARAH LOU PEOPLES
CATHERINE PHILLIPS
RUTH PHILLIPS
CLEO PINNIX
GERALDINE RASH
WILLIAM RENNIE
LOUISE RICH
WILMA SINK
RACHEL SPAINHOUR
FRANCES LOUISE SURRATT
CLEO TEMPLETON
JAMES ALLEN THACKER
LUCY NEAL THAYER
CHARLOTTE VARNER
MARGARET MILLER WADE
FOY WAFFORD
RUPERT GILMER WAGONER
HELEN WALLER
PATSIIE WARD
VEREL WARD
MARY ALYCE WILLIAMS

CHRISTIAN ENDEAVOR SOCIETY



OFFICERS

LEE ROY SPENCER	<i>President</i>
LEA JOYNER	<i>Vice-President</i>
MARC LOVELACE	<i>Secretary-Treasurer</i>
HARMON DILLARD	<i>Chaplain</i>
BEVERLY BOND	<i>Reporter</i>
A. C. LOVELACE, SR.	<i>Faculty Advisor</i>

ROLL

CHARLES E. ANDERSON	J. VAUGHN BOONE	ED BUCK
BEVERLY BOND	JOHN BROWN	WINIFRED BURTON
JOHN CAGLE	A. C. LOVELACE, JR.	
PAUL DEATON	MARC LOVELACE	
HARMON DILLARD	B. S. NIFONG	
EMSLEY PAUL HAMILTON	WILLIAM RENNIE	
JOHN M. HAMM	WORTH ROYALS	
WILLIAM HATCHER	LEE ROY SPENCER	
LAWRENCE HOLT	THOMAS E. STRICKLAND	
LEA JOYNER	JESSIE SWINSON	
A. C. KENNEDY, JR.	ERNEST SMITH	
ELIZABETH KIVETT	BERNARD ERNEST SHUFELT	
JESSIE LOWE	CHARLES D. WHITE	

MINISTERIAL ASSOCIATION

THE BAND

OLIN BLICKENSDECKER
Conductor

RUSSELL HUGHES
Drum Major

EMMA WHITAKER

LILLY WHITAKER

"Twin Twirlers"

Cornet—

ROBERT ANDREWS
MANLY BYERLY
LAWRENCE CARTER
CECIL FREEMAN
WARREN GODWIN
JOHN WILLIAMS

Trombone—

NICK BAMBALIS
MILTON PRICE
JUANITA RAGLAND
P. H. SCARBORO

Clarinet—

JAMES J. CLARK
MARC LOVELACE
JAMES SCOTTEN
HENRY TERRY
ROBERT TROXLER
JAMES WILLIAMSON

Snare Drum—

FRED COX
VERNON FORNEY

Percy Holland

JAMES MCCALL
ALICE OVERMAN

Saxophone—

SUSIE HESTER

Drum—Bass

M. T. HICKS, JR.

RENFROW PIRTLE

Baritone—

JOE MAY
JACK PUGH

Alto—

MARY LEE NALLEY
JOE SHEETS

Euphonium—

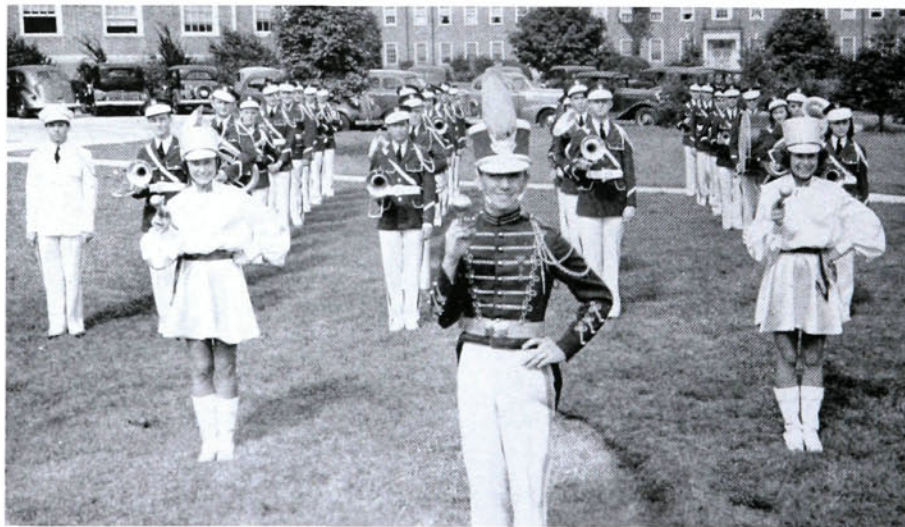
ROBERT OVERMAN

Cymbals—

WILLIAM RENNIE

Flute—

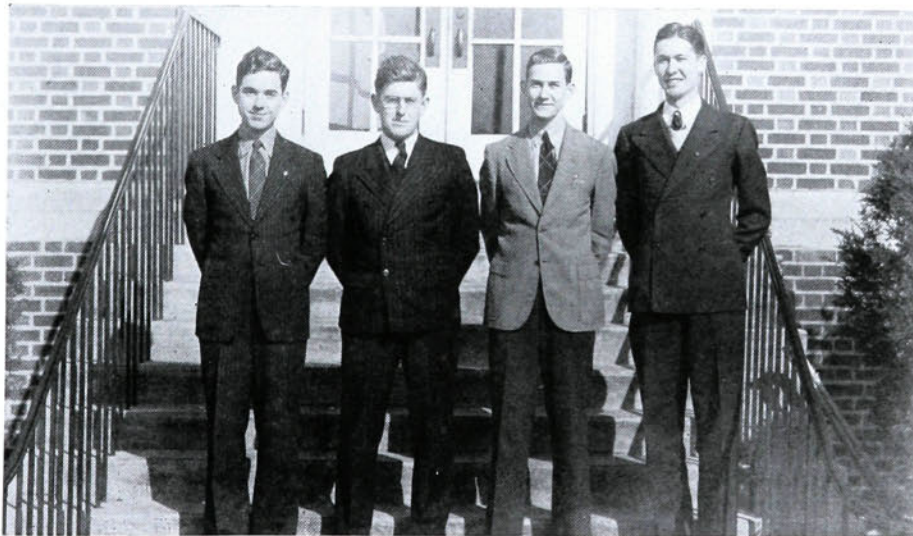
EDITH VANCE





Muse, Kennett, Johnson, Lindley, Lindley, Lee, Glasgow, Lindley

FORENSIC COUNCIL



Lovelace, Lee, Lovelace, Holt

INTERCOLLEGIATE DEBATERS



Lovlace, Holmes, Lindley, Baity, Dixon, Hinshaw, Johnson
Thacker, Lovlace

LIGHTED LAMP



Lovlace, Thacker, Lindley, Boone
Dixon, Baity, Bookout

WHO'S WHO



"H" CLUB



Crowder, Cox, Dixon, Bond, Lindley

CHEERLEADERS

MODERN PRISCILLA CLUB

OFFICERS

VIRGINIA CURRY *President*
 REBECCA COBLE *Vice-President*
 ESTHER MIRAN *Secretary*
 RUTH MERELYN THOMPSON *Treasurer*

MEMBERS

BANKS APPLE
 MISS LOLA BARRY
 HELEN BATES
 SARA BRANDON
 KATHLEEN CHEEK
 REBECCA COBLE
 ADELAIDE CONNOR
 VIRGINIA CURRY
 MARGUERITE DEYOE
 VESTAL FERGUSON
 RUTH FUTRELLE
 JANE GROOME

AUDREY GUTHRIE
 VIRGINIA HUNT
 LUCILLE JOHNSON
 CHRISTINE KISER
 OLGA MARLETTE
 ESTHER MIRAN
 NELLIE MOORE
 ETHELDA PETERS
 JEWEL PHILLIPS
 CLEO PINNIX
 FRANCES SCRUGGS
 LUCY NEAL THAYER

DIXIE THOMAS





LOLA BARRY
Home Economics

HOME MANAGEMENT HOUSE

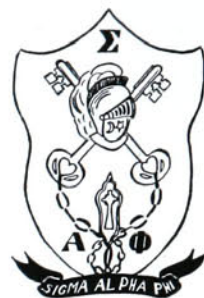
To live in and manage the Home Economics "practice house" is one of the requirements of every girl working for a B.S. degree in Home Economics. This, however, is one of the most popular courses, for besides the work and study, the occupants find that there is also much enjoyment connected with it.

During the six-weeks stay in the house, the home economics major applies the principles she has been learning in her four years training. Practically every angle of home management is taken up in the home. The girls learn the importance of careful managing of money and a greater appreciation of group living, and the ability to use their own time and energy for the best results.

Miss Lola Barry, head of this department, supervises the house, but in the main, the management is left up to the young women.



S I G M A A A L P H A A P H I



ROLL

JACQUELINE KINNEY	WILMA SINK
FRANCES MUSE	RACHEL SPAINHOUR
LUCILLE INGRAM	LUCILLE JOHNSON
NANCY PARHAM	BANKS APPLE
DIXIE THOMAS	BETSY DEAN WAGGER
ESTHER MIRAN	BETTY SECHREST
REBECCA COBLE	MILDRED MARSH
VEREL WARD	JANE AUSTIN
HELEN WALLER	DOT MCCALL

HONORARY MEMBERS

MISS JANET RUSSELL
MISS VERA IDOL
MRS. P. E. LINDLEY





I O T A T A U K A P P A

ROLL

G. W. HOLMES, III	BURKE KOONTZ
PORTER HAUSER	JACK LEE
GLENN GOLD TOWERY	MARC LOVELACE
JAMES ROGER PEELER	MORTON SAMET
LINDSAY L. WALKER	SEYMOUR FRANKLIN
RUPERT GILMER WAGONER	JOHN MORAN
JAMES ALLEN THACKER	MARSE GRANT
DANIEL C. SHARPE	ARTHUR EDWARDS
REGINALD HINSHAW	ROBERT CLIFTON

HONORARY MEMBERS

DR. C. R. HINSHAW
DR. P. E. LINDLEY
DR. P. S. KENNETT
DR. H. B. HIATT
MR. O. A. KIRKMAN



T H E T A P H I



ROLL

HELEN RAE HOLTON	RUTH M. THOMPSON
SARA FORREST THOMPSON	JEANNE RANKIN
DOROTHY JONES	NANNABETH NULL
NELL HOLTON	HELEN CROWDER
OLGA MARLETTE	DOROTHY STEPHENSON
EDITH VANCE	PAULINE KENNETT
CATHERINE ELLISON	SUSIE HESTER

HONORARY MEMBERS

MISS LOUISE ADAMS	MRS. N. P. YARBOROUGH
MRS. GLENN MUSE	MRS. N. M. HARRISON





E P S I L O N E T A P H I

ROLL

FRANK HARTMAN	GEORGE ELKINS
BILL HESTER	EDGAR WELBORN
JACK GIBSON	C. A. WATTS
DWIGHT MORGAN	DAVID PETREE
DOE GRAY	FRANK HEGE
CHARLES HARVILLE	BEURON GARLINGTON
JIMMY CLARK	ARTIE OCORR
BILL COOK	CHARLES COCHRANE
ARCHIE WILLIAMS	BEVERLY BOND

HONORARY MEMBERS

MR. EDGAR HARTLEY	MR. J. H. MOURANE
MR. W. F. BAILEY	MR. N. P. YARBOROUGH
MR. DAVID T. YOW	DR. B. H. HILL



ALPHA THETA PSI



ROLL

GILBERT PRIMM	ALICE JONES
MYRTLE POORE	ALICE HOFFMAN
ELIZABETH KIVETT	DANEASE MANLEY
ELEANOR WELCH	



HONORARY MEMBERS

MRS. ALICE PAIGE WHITE	MRS. S. O. PEEBLES
MRS. M. W. NASH	MRS. G. I. HUMPHREYS





DELTA ALPHA EPSILON

ROLL

HENRY TERRY	FRED COX, JR.
ROBERT JOHNSON	A. C. LOVELACE, JR.
S. J. WELBORN	OLIN BLICKENSERFER
M. C. HENDERSON, JR.	HOWARD LINK
N. C. JOHNSON	

HONORARY MEMBERS

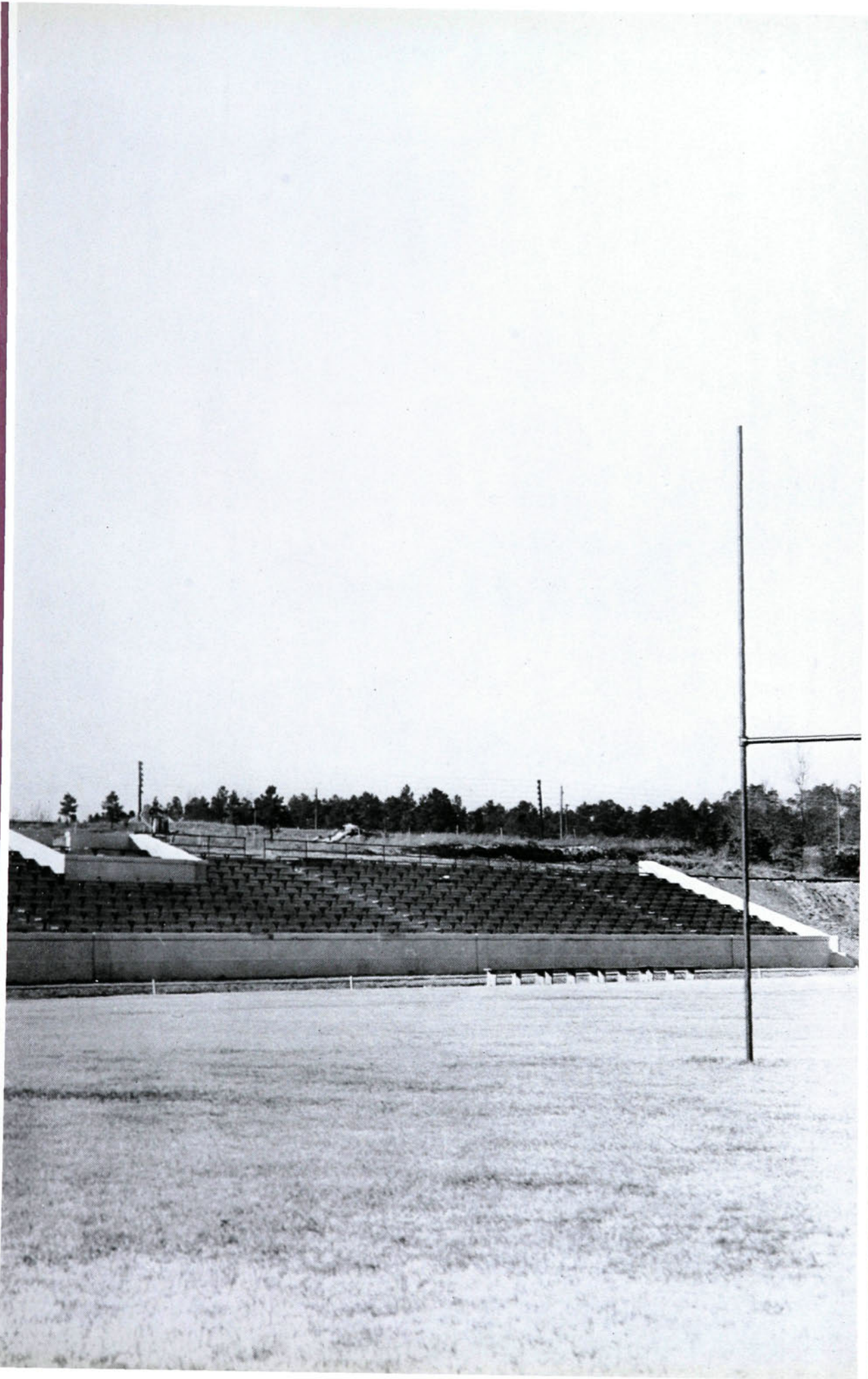
DR. GLENN PERRY	MR. C. C. ROBBINS
DR. PAUL R. BOWEN	MR. HERMAN SMITH
MR. W. H. FORD	MR. JOHN WHITSILL
MR. J. H. ALLRED	DR. R. B. DAVIS
DR. W. L. JACKSON	

SWEETHEART OF FRATERNITY

EDITH VANCE



A t h l e t i c s . . .





C. VIRGIL YOW
Head Coach

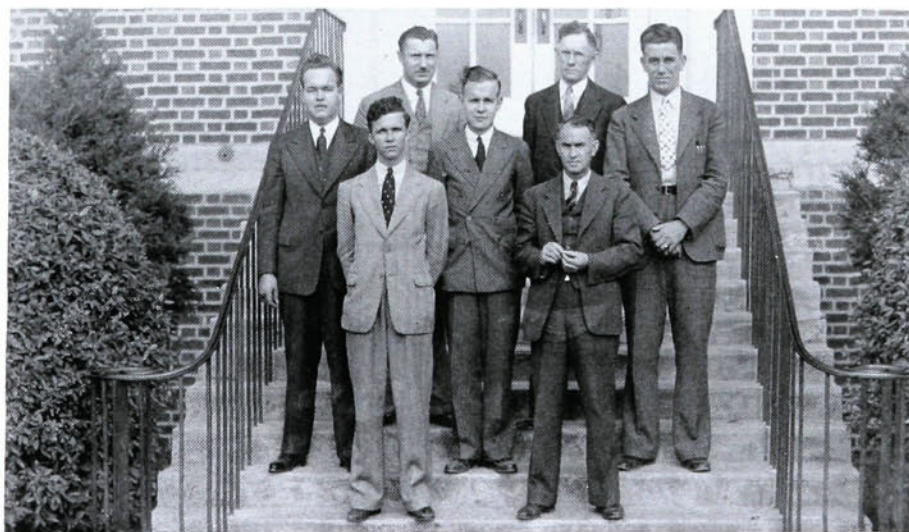


E. C. GLASGOW
Assistant Coach

ATHLETIC ASSOCIATION

Under the guidance of Dr. C. R. Hinshaw, director of athletics, the Athletic Association has this year done its finest work in the realm of sports at High Point College. This group is composed of two student members, the varsity coach, the graduate manager of athletics, and three members of the faculty. The duties of this group include the scheduling of contests, the purchasing of supplies, the matter of transporting athletic teams, and various routine matters that have to do with the college sports of football, basketball, baseball, soccer, tennis, and track. The addition of floodlights on the football field, and a co-sponsorship of the Amateur Athletic Union tournament have been activities that the Athletic Council has engaged in during the last year and a half. The largest and most important activity undertaken by the council was sending the basketball team to the National Interscholastic tournament in Kansas City.

Yarborough, Hinshaw
Holmes, Austin, Yow
Hinshaw, Allred





COUNIHAN
Tackle



MALFREGEOT
Back



CLIFTON
Back



SECRET
Back



BENNETT
Center



FORNEY
Guard



F O O T

Unlike the old lady who lived in the shoe, C. V. Yow, Panther Ringmaster, didn't have enough football children left over that he didn't know what to do. As a matter of fact, the entire schedule was played by approximately sixteen men. However, the Yowmen weathered the suicide schedule with considerable eclat.

In the initial showing the Panthers were defeatd by Catawba, 18-0. While in the second fray Elon College had little trouble rolling up a 40-point win.

Lenoir-Rhyne trimmed the Pointers in spite of the efforts of Jack Moran, giant picket, who made the left flank unturnable. Smearing ball carriers far behind the line and accounting for the Panthers' lone tally, however, Moran wasn't enough to stop the Bears who won 27-6.

The Guilford Quakers scored their single tally early, only to see a scrappy Panther eleven come back in the final period knotting count at 6 all.

Appalachian thrashed the Yowmen 41-2, scoring 33 points in the last half.

It was against William and Mary that the Panthers first tasted victory 7-0. Mickey Cochrane, tough-

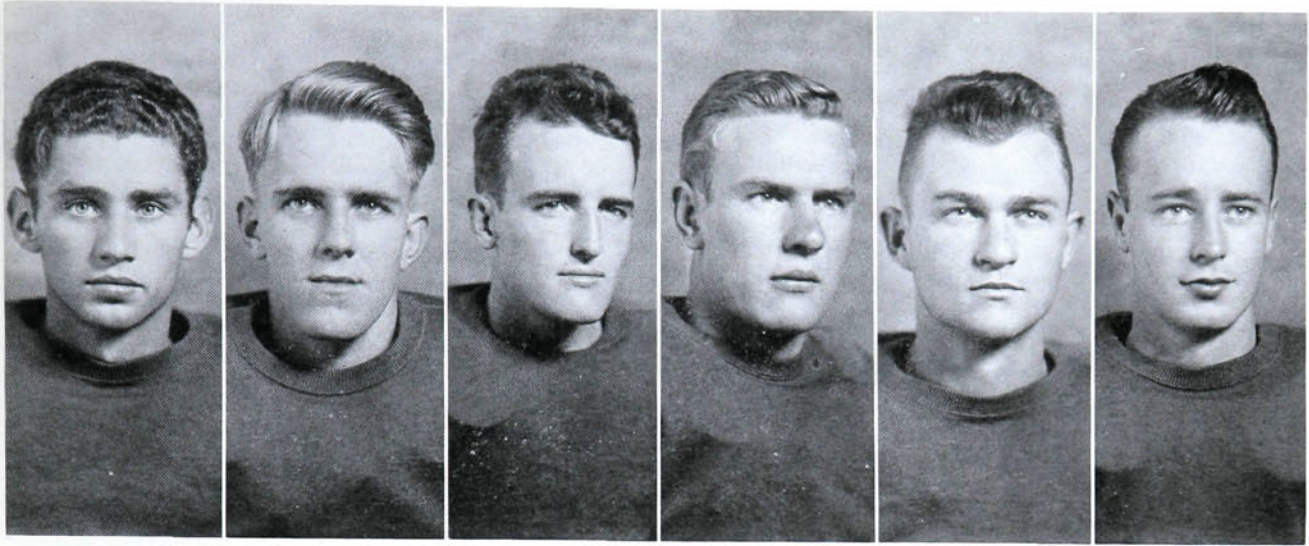


HARVILLE
Trainer

MORAN
End

FRANKLIN
End





ARMSTRONG
Back

ALMOND
Back

LEMASTER
Center

WATTS
Back

COCHRANE
Back

OCORR
Guard

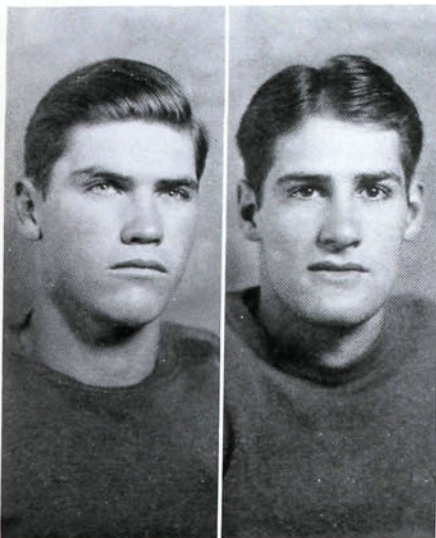
B A L L ★



STOLACK
Manager

JOHNSON
Tackle

FERNANDEZ
Guard



fibred, triple-threat back, who tosses bullet passes, skirts the flanks audaciously and punts with skill, lugged the leather twelve yards for the only score of the day.

Eastern Carolina fell before the Yow machine 21-6. The entire team, led by Secret and Franklin, played an outstanding game.

Journeying to Virginia, the Panthers fell victim to a hard-charging Emery-Henry eleven. The Wasps celebrated homecoming by rolling up a 24-0 win.

Closing the season in a blaze of glory, the Panthers defeated Western Carolina Teachers 18-0. Moran, Armstrong, and Franklin accounted for the Panthers' tallies.

And so another High Point eleven closes its season. When Coach Yow blows his whistle next fall for the opening of another pigskin season only two members of this year's squad will be missing—Lemaster and Almond, who will leave via the sheekskin route.

With the returning veterans, and the usual new talent, prospects for a banner year are good.

FOOTBALL RESULTS

High Point	0; Catawba	18
High Point	0; Elon	40
High Point	6; Lenoir Rhyne	27
High Point	6; Guilford	6
High Point	2; Appalachian	40
High Point	7; William and Mary	0
High Point	21; E. C. T. C.	6
High Point	0; Emery and Henry	24
High Point	19; W. C. T. C.	0

MEMBERS OF THE SQUAD

ALMOND	COLLINS	GREESON	MOORE
ARMSTRONG	COUNIHAN	JOHNSON	MORAN
AUMAN	EARLE	KIVETT	MURRAY
BENNETT	FERNANDEZ	LEMASTER	OCORR
BREECHER	FIKE	MALFREGEOT	SECRET
CASHATT	FORNEY	MERHIGE	TARVER
CLIFTON	FRANKLIN	MILLS	WATTS
COCHRANE			WHITE





BASEBALL, 1937-1938

Although the '38 baseball team was not successful when judged by the won and lost record, the Panthers were a scrapping team that had plenty of fight. Wayne Harris and Rass Grigg led the club at bat, while Hal Yow and Elmer Cashatt saw most service on the mound, pitching to J. C. Varner and Mickey Cochrane, first-string catchers. Hugh Hampton held down the first-base post, with Graham Armstrong at second, Burke Koontz at short, and Red Towery at third. Gil Wagoner and Pat Secret saw service in the out-field with Harris and Grigg.

RESULTS

High Point	6;	Catawba	7
High Point	3;	E. C. T. C.	8
High Point	0;	E. C. T. C.	6
High Point	5;	Lenoir Rhyne	7
High Point	2;	Guilford	1
High Point	3;	Catawba	7
High Point	0;	Elon	10
High Point	9;	A. C. C.	4
High Point	6;	A. C. C.	1
High Point	9;	Lenoir Rhyne	8
High Point	4;	Guilford	7
High Point	6;	Guilford	8
High Point	2;	Elon	4
High Point	8;	Guilford	5
High Point	14;	E. C. T. C.	5
High Point	3;	E. C. T. C.	7

BASKETBALL

1938-1939

The basketball season of 1938-1939 will go down as one of the most successful seasons in the history of High Point College. Aside from annexing the North State Conference Championship, the Purple and White basketball team won the Carolinas A. A. U. tournament and received an invitation to the National Intercollegiate Tournament in Kansas City, where they acquitted themselves admirably well.

In pre-Christmas games the Panther outfit showed great promise in triumphs over Greensboro "Y" and Adams-Millis and in close losses to Wake Forest and McCrory. A five-day invasion of Eastern Carolina and Tidewater Virginia immediately after Christmas resulted in five consecutive victories for the locals. In early season conference play the Appalachian Mountaineers upset the high-flying Panthers by a three-point margin. From this time until the conference title had been clinched, the Purple and White team played a sterling brand of basketball that swept everything before it. In this fine string of triumphs were two wins over the defending title holders, the Elon Christians, by thirteen and fifteen point margins.

After the close of regular season play, the senior men's division title in the A. A. U. tourney went to the High Pointers after a thrilling two-point decision over the McCrory Eagles. Although losing in the National event at Kansas City, High Point gave a good account of itself against the nation's topflight aggregations.

The 1939 edition of the Panthers was captained by Glen (Red) Towery, playing his fourth year as a regular guard. "Red" ended his brilliant career by being one of the three High Pointers placed on the mythical all-conference team.

Bill Hester, a senior, completed his college basketball career after serving for three years as one of the best defensive guards ever to wear the Purple and White. Hester and Towery will be the only performers lost by graduation.

The high scorer and center for the local club was towering Hugh Hampton, also selected for all-conference honors. Hamp's forte was handling balls under the basket, where he garnered most of his points.

The third Panther star to make all-conference laurels was Morton Samet, a fast forward from Long Island. Morton this year fulfilled the promise shown last year



HESTER
Guard
HAMPTON
Center
COUNIHAN
Guard
MURRAY
Guard

SAMET
Forward
MORAN
Forward
NANCE
Forward
ARMSTRONG
Forward

TOWERY
Guard
MALFREGEOT
Guard
KEENE
Center
WATTS
Forward

as a freshman and blossomed into a valuable Pointer star.

Hilliard Nance, in his first year of eligibility, held down the other forward post. Although ineligible the first semester, "Jeep" soon captured a first-string berth and held it the rest of the year.

Jack Moran saw plenty of action both at a guard and forward post and gave indication of holding down a first-string berth next year. Jack's best night was against Wake Forest when he played the whole game and an extra period.

The best pop-shot on the entire squad was Marcel Malfregeot, a diminutive guard from West Virginia. Marcel's long shots and scrappy play stamped him as outstanding performer in his second year of competition.

Two valuable subs to the Yow coached aggregation this year were Bill Keene and Jerry Counihan. Keene graduated from the Jay Vees to the job of understudying Hampton, where he showed plenty of action. Standing 6 feet 8 inches, Keene was outstanding under the backboards. Jerry Counihan, a freshman from Freeport, New York, made the varsity after starring for the freshmen a few weeks. Jerry had more scrap than anybody on the team, and if he continues to improve he will probably have a first-string guard berth next year.

The three remaining squad members were Frank Murray, Graham Armstrong and W. C. Collins. Murray and Armstrong came by way of the Jay Vees, while Collins is a freshman from South Carolina. Although these men did not see a great deal of action, they were valuable men and showed promise that may be fulfilled next year. Coach Virgil Yow and Managers George Elkins and Billy Locke complete the roster of the Purple Panther Quintet, North State Conference Champions.

JUNIOR VARSITY

Although not getting the publicity it deserved, the Junior Varsity quint compiled a great record on the hardwood for the season of 1938-1939. Playing strong high school and independent teams, the Jay Vees went through their regular schedule with the loss of but one encounter.

Under the tutelage of Coach Clayton Glasgow, several promising players were developed that showed potential basketball finesse. The outstanding scoring threats were Milliard Coble, Bill Paterson, George Welborn, and Malcolm Riley. On the defensive side of the ledger Bob Merhige, John Brown, and Jimmy Moore showed up best. Other players that saw a good bit of action were Boyce Wynn, S. J. Welborn, Frank Fernandez, and Thompson.

After completing the regular season play, the Jay Vees entered the A. A. U. Tournament, where they won three hard encounters before losing to the crack Airco team, defending champions in their division. In the High Point Y. M. C. A. Gold Medal play the local team was eliminated in the second round of play.

The Junior Varsity played preliminary games to all the Panther home clashes as well as traveling to various high schools throughout. In their practice sessions it fell their lot oftentimes to engage in tedious scrimmages with the varsity quintet. So the success that befell the Senior Panthers in some measure belongs to the Jay Vee outfit.

Although there should be few vacancies on the varsity team next year, the Jay Vee team members are quite ready to step in when needed or even oust a varsity man from his position. All in all, the past season was the most successful yet for the Junior teams at High Point.

JUNIOR VARSITY

COBLE	MOORE
PATTERSON	WYNN
WELBORN	WELBORN
RILEY	FERNANDEZ
MERHIGE	THOMPSON
BROWN	





Earle, Samet, Franklin, Short
Hauser, Hinshaw

TENNIS

With the coming of warm balmy breezes, and the sunshine that spells springtime, the tenniseers of the campus make their first appearance of the year. This year was no exception, except that some of the more hearty souls did not wait until the warm breezes were blowing. Tennis is a universal sport and draws a large number of enthusiasts on the local campus. But heading the list, of course, is the college tennis team.

Prospects were very bright at the opening of practice session for one of the greatest tennis teams in the school's history. And so it should be—what with five regulars from last year's team returning to the fold to don once again the Purple and White of High Point College.

Heading the list was Morton Samet, brilliant two-sport star of the college. In addition to being the number one man on the squad, he is also the school champion, having won the annual tournament held last fall. Others who reported from last year's team were Albert Earle, Richard Short, Porter Hauser, and Reginald Hinshaw. These men framed the nucleus around which the team was built. Several new freshman players added to the team's strength but their day will come later.

Last year's team, although inexperienced, won three matches out of the eight contests played. Three wins were turned in over the strong net squad from Atlantic Christian College, while the local aggregation dropped double-headers to the netmen from Elon College and Lenoir-Rhyne College. One match was dropped to the strong Guilford Quakers.

The same teams will probably be met in this year's matches, although several other teams from North Conference school may be added.

With the veterans from the preceding year's squad and the usual influx of new talent, tennis, as an inter-collegiate sport, is coming into its own on the local campus.

Although tennis at High Point has progressed rapidly, a still brighter future lies ahead.

WOMAN'S ATHLETIC ASSOCIATION

All girls who care to participate in sports and acquire the required points for entrance are eligible for membership in the Woman's Athletic Association, one of the most active organizations on campus.

In general, the association, which has a national standing, has as its purpose the development of a program of athletics that will provide both wholesome recreation and practical training for the young women students.

All intra-mural tournaments are sponsored by the association. Soccer, basketball, volley ball, softball, and tennis were included in the schedule for the past year.

To recognize individual achievement, the association awards points for the participation in athletics. The greatest number of points are given to those who make the varsity teams of the various sports. To win a college letter, five hundred points are required, but to win a coveted college sweater, a girl must earn two thousand points.



MISS STRICKLER
Physical Education Director

OFFICERS

VIRGINIA DIXON	<i>President</i>
MARY M. BAITY	<i>Vice-President</i>
LUCILLE JOHNSON	<i>Secretary</i>
HELEN RAE HOLTON	<i>Treasurer</i>



S O C C E R



Phillips, Graham, Guyer, Guthrie, Holmes, Helms, Surratt, Jenkins, Grant

Volleyball, the most popular of all fall sports, had its beginning in November. Again, Harrison Gymnasium was the scene of stirring interest each afternoon when record-breaking numbers of co-eds practiced to improve their skill and to become eligible for positions on their class teams.

The intra-mural tournament held in December proved to be a series of hotly contested battles between the class teams. Competition was especially sharp for the teams were composed of efficient groups of players with an aptitude for point making.

The crown of victory was claimed by the hard-hitting Seniors followed by the Juniors, Sophomores, and Freshmen in order. The winners will have their name engraved on the Athletic Association Cup.

Women's fall sports were brought into full swing with the playing of soccer. Although this game is only in the second year as a sport being offered by the women's physical education department interest runs high. The soccer season provided thrill and excitement for the athletic-minded lassies who learned the rules from indoor classes and put them into use on the outdoor field under the capable direction of the physical education director.

Afternoon practices held each day were attended by a large number of enthusiastic girls who played hard to try to make for themselves places on their class teams. Points toward a college letter were given to those girls attending the required practices.

The soccer season was culminated with the playing of the annual class tournament in November. From this tournament in which there was keen competition, the Sophomores came forth as the 1938 victors

V O L L E Y B A L L



Miran, Johnson, Palmer, Bivins, Guthrie, Jenkins, Grant, Holmes

B A S K E T B A L L



Moore, Johnson, Miran, Lindley
Guthrie, Marlette

Basketball, the best loved of all the sports offered to women, had its start in December when the scrapping groups of basketeers began their rigid practices to get in trim for the defense of their respective classes' honor for the playing of the intra-mural tournament. This tournament was scheduled for the first week in March.

Although intercollegiate games are not engaged in by the girls, this game creates more interest among the co-eds and the entire student body than any of the other sports. The tournament is a keen struggle among the competing classes who fight hard for the glory of their teams. Loyal spectators urged the teams to victory.

Under the capable coaching of Miss Strickler, the players developed a skill and expertness on the court which proved to be very worthy of recognition.

Warm spring days found physical education classes tripping to the Boylan Terrace field for the best loved sport of spring—baseball.

Class competition during the past season was particularly keen. After rigid daily practices, the teams were selected from a very efficient group of hopeful candidates. Attendance of a required number of these practices won points toward a college letter.

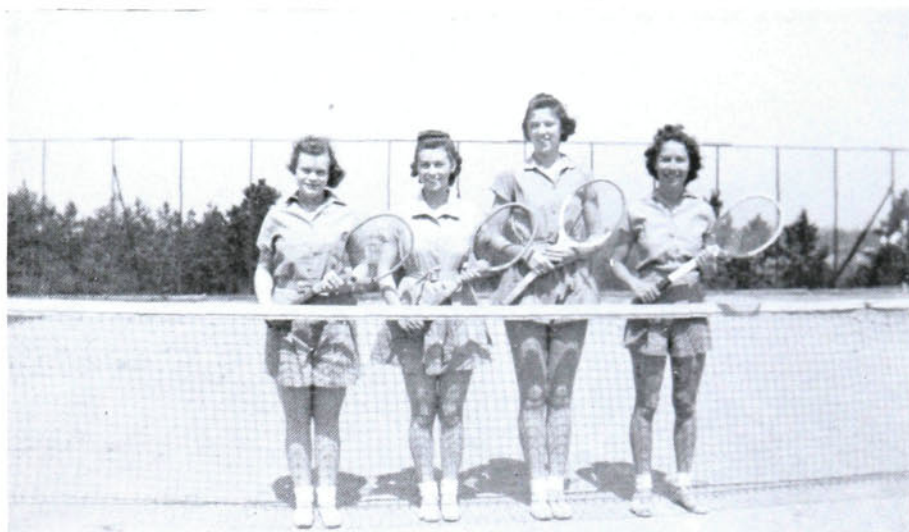
The championship play held in May was a demonstration of such batting as was a challenge to our own varsity team. Never before has such aptitude and eagerness been exhibited among the players.

The softball tournament closed the women's sports program for the year, but feeling was as strong in this playing as in that of any of the other games.



Elkins, Holmes, Moore, Lindley, Miran, Johnson
Helm, Guthrie, Marlette

B A S E B A L L



T E N N I S

With the coming of warm spring days, the tennis courts are overrun with scores of hopeful co-eds striving zealously to improve their skill in the use of the racquet.

Tennis found its place in the physical education classes where the girls learned the fundamentals of the game and then put them into practice and action on the courts.

Tournaments of both singles and doubles were run off this year by way of the ladder system. Anyone with the required number of supervised practices was eligible for entrance in the tournament which was played off in the latter part of May.

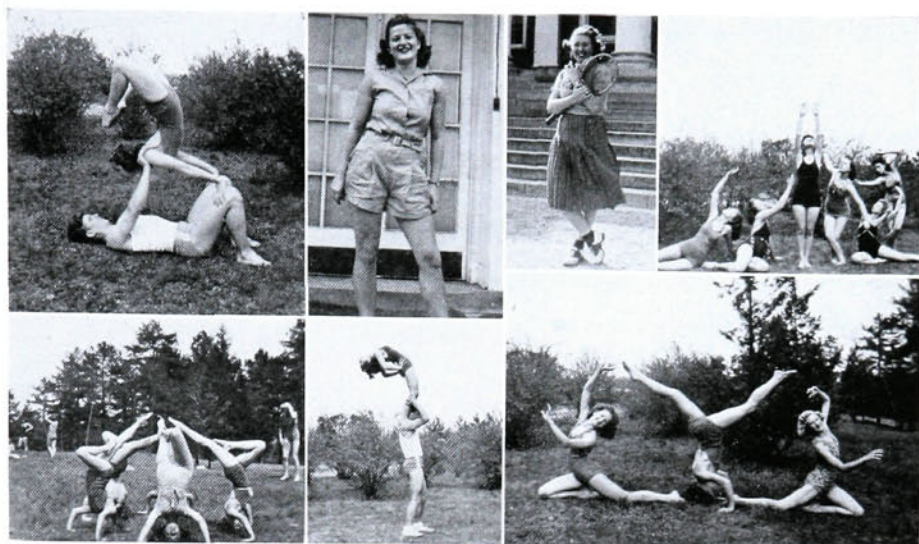
Although only in its second year in the curriculum at High Point, perhaps no physical education course has caused quite as much interest and enthusiasm as has dancing.

Under the capable direction of Miss Strickler, the young women were taught the fundamentals of ballroom, interpretative, and folk dancing.

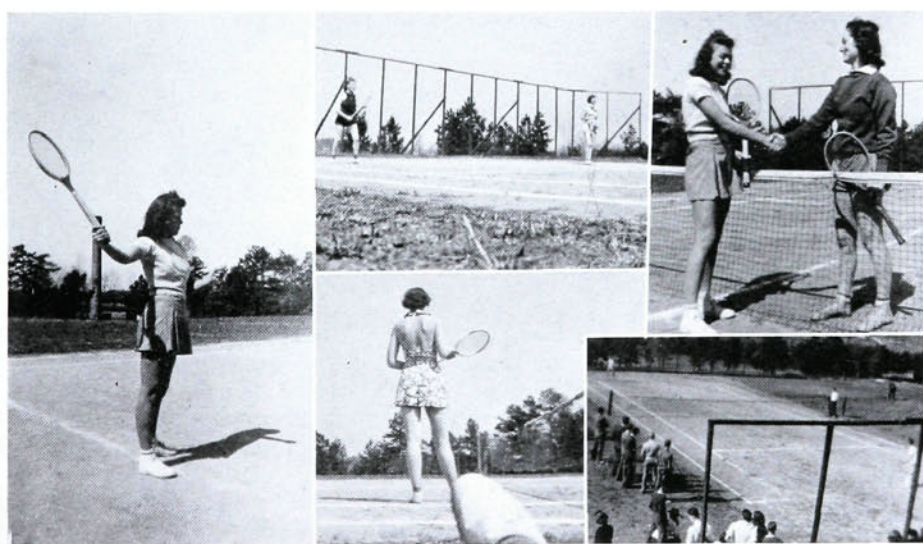
This department was greatly responsible for the success of the May Day festivities. Those who showed outstanding improvement and ability were selected to participate in the May Day program.

D A N C I N G





HERE AND THERE



F e a t u r e s . . .





COLLEGE MARSHALS

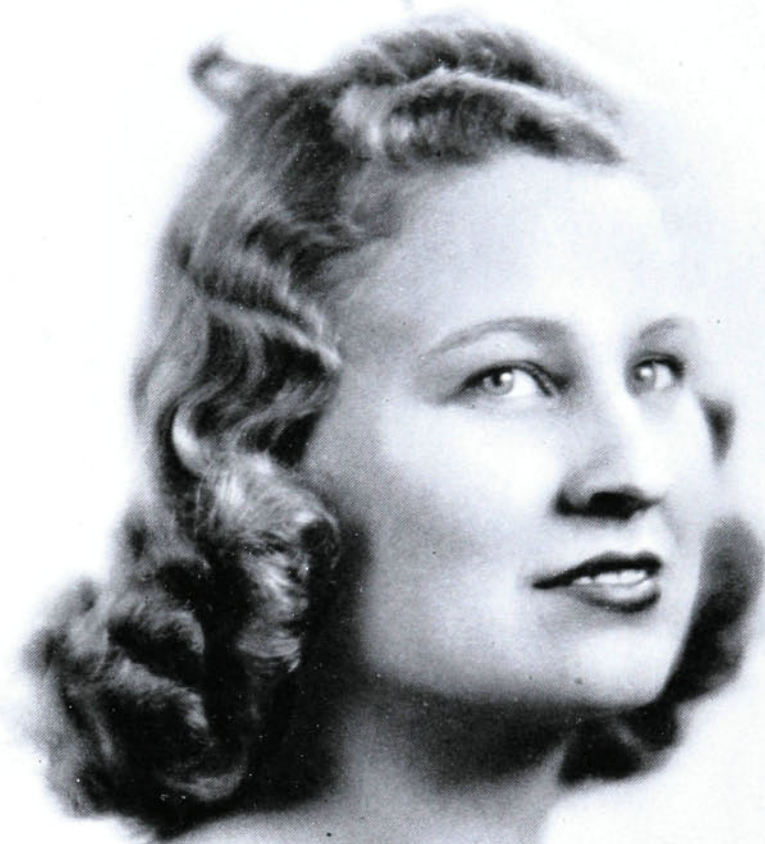
HINSHAW, *Chief*

JOHNSON
MIRAN

HOLTON
LOVELACE

COBLE
GRAY

WALLER
BOND



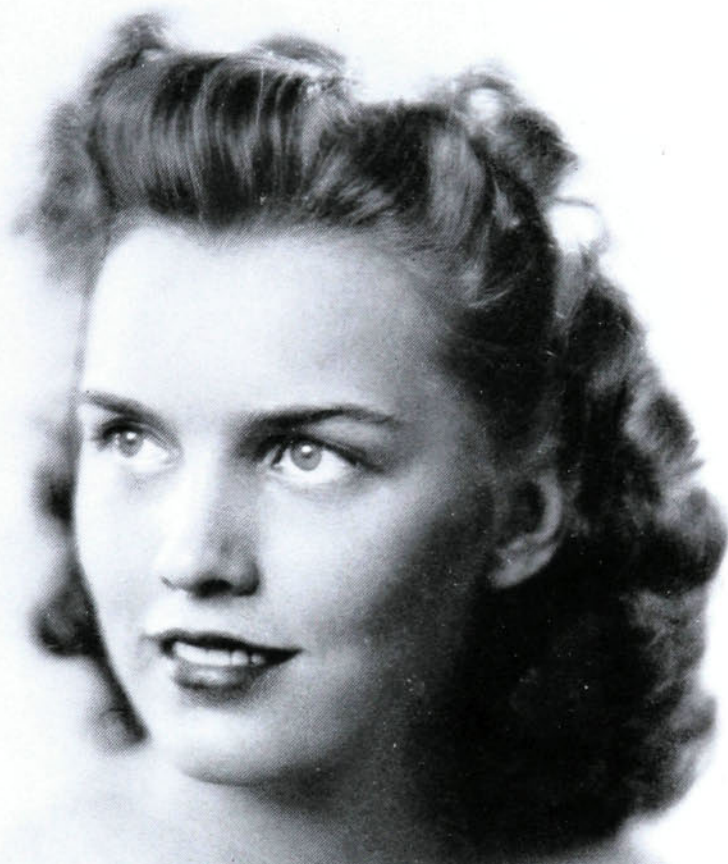
MISS DOROTHY JONES
SPONSOR SENIOR CLASS



MISS VEREL WARD
SPONSOR JUNIOR CLASS



MISS ALICE CHANDLER
SPONSOR SOPHOMORE CLASS



MISS EVELYN SECHREST

SPONSOR FRESHMAN CLASS

Selected The Most Beautiful by Paramount Pictures
Hollywood

S
E
N
I
O
R

S
U
P
E
R
L
A
T
I
V
E
S

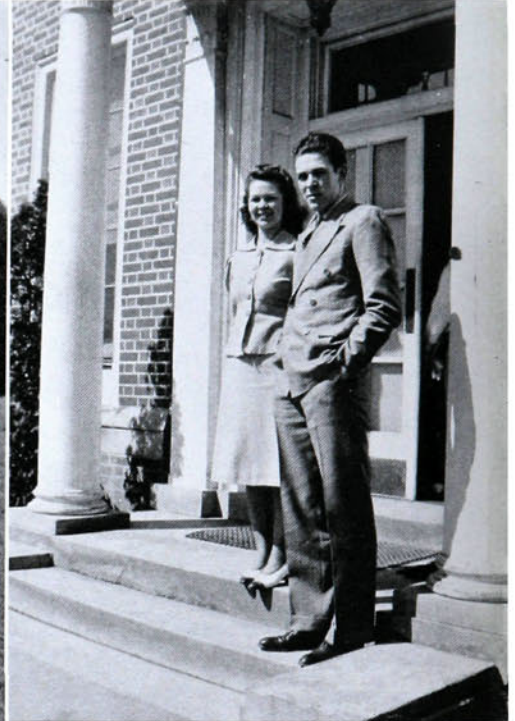
BEST LOOKING

DOROTHY JONES
DANIEL C. SHARPE



BEST SPORTS

FRANCES MUSE
WILLIAM HESTER



MOST VERSATILE

VIRGINIA DIXON
ALLEN THACKER



MOST ORIGINAL

NANCY PARHAM
VAUGHN BOONE

MOST INTELLECTUAL

MARY MITCHELL BAITY
A. C. LOVELACE, JR.



MOST ATHLETIC

VIOLET JENKINS
GLENN TOWERY



S
E
N
I
O
R

S
U
P
E
R
L
A
T
I
V
E
S



MOST POPULAR

EVELYN LINDLEY
CHARLES HARVILLE



MOST FRIENDLY

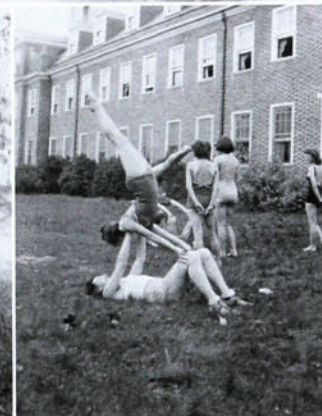
MARY MITCHELL BAITY
DWIGHT MORGAN

MAY QUEEN

•

MISS
VIRGINIA
DIXON







C A N D I D S H O T S



S I D E L I G H T S



A T H I G H P O I N T

The 1939 Zenith

ALLEN THACKER, BUS. MGR.
FRANCES MUSE, EDITOR

H I G H P O I N T C O L L E G E Y E A R B O O K

High Point, North Carolina

May Day, 1939

Dear Fellow Students,

We hope you will find our efforts in getting out this ZENITH the inspiration for much pleasure to you now, later, and in your years of dotage. Our advertisers have gone a long way with us in making this book possible for you. Our advertisers have made this ZENITH the ZENITH that it is.

We have pledged your support to the following business firms and institutions. Don't let us down. Won't you patronize our advertisers.

Sincerely,

Business Department,
The '39 ZENITH,
ALLEN THACKER, *Bus. Mgr.*

World's Largest Publishers

THIS BOOK DESIGNED AND PRINTED BY

Benson

PRINTING COMPANY ★ NASHVILLE

of College Annuals

Sartin Dry Cleaning Co.

Dial 4501

1670-76 Eng. St.

Dutch Laundry, Inc.

Dial 3319

829-33 S. Main St.

J. C. PENNY CO.

Incorporated



In High Point It's Penny's for
Style and Values!

Compliments

A. B. Frost

JEWELER

SECURITY BUILDING

MAIN MOTORS, Inc.

BUICK MOTOR CARS

900 North Main St.

High Point, N. C.

Bob: Have you got a picture of yourself?

F. J.: Yeah.

Bob: Then let me use that mirror, I want to shave.

The good will of men, women and children who contact this organization casually or in business constitutes the principal asset which maintains it as a service institution. Our sincere desire to serve our many patrons well and unselfishly is widely recognized and our ability to do this is established.

HIGH POINT, THOMASVILLE AND DENTON RAILROAD COMPANY



"NOTHING BUT SERVICE TO SELL"

DRINK *Coca-Cola* in BOTTLES

High Point Coca-Cola Plant

High Point Hardware Co.

127 South Main St.

D. & M. SPORTING GOODS

"Anything for the Game"

COMPLIMENTS

J. W. Montgomery & Son

GROCERS

Traffic Cop: Don't you know what it means when I hold up my hand?

Old Lady: I ought to; I was a school teacher for thirty-five years.

COMPLIMENTS

OF

WRIGHT-CLINE SHOP



308 N. MAIN ST.

Without Printing Modern Education
Would Be Impossible

Barber Hall Printing
Company

PHONE 2385



BELK STEVENS CO.

HOME OF BETTER VALUES

(Family Outfitters)



COMPLIMENTS

OF

CECIL'S DRUG CO.



J. W. SECHREST AND SON

Since 1897



AMBULANCE SERVICE



Dial 3349

Welcome to

THE SHERATON HOTEL

"Noted for Good Food"

W. G. MALONE, Manager

Lewis & Holmes Motor Freight CORPORATION

HIGH POINT, N. C.

ATLANTA, GA.

High Point Office Phone 4503

Athlete: A dignified bunch of muscles, unable to split wood or sift ashes.

—Foolish Dictionary

HIGH POINT STEAM LAUNDRY



Dry Cleaners and Dyers

PHONE 3325

FOR IMPORTED AND DOMESTIC
Champagne, Wine, Beer, Ale
Potato Chips

Always Fresh

Fried Daily

Paul Yount's Package Store

790 N. Main St.

Phone 2661

FOR QUALITY DAIRY PRODUCTS

Lindale
DAIRY CORP.

WEST LEXINGTON AVE.

High Point, N. C.

Quality Watches, Diamonds, Jewelry, Silverware,
Clocks, Gifts, Luggage

WAGGER JEWELRY COMPANY

Elwood Hotel Corner

HIGH POINT, N. C.

COMPLIMENTS OF

WAGGER'S LADIES' SHOP

Incorporated

"For the Woman Who Cares"

Burrus Memorial Hospital

AND

Burrus Clinic

You've mor'n likely noticed
When you didn't, when you could
That jes' the thing you didn't do,
Was jes' the thing you should.

—Anon

Cut Rate Furniture Co.

Complete Home Furnishings

615-616 East Green St.

HIGH POINT, N. C.

Phone 2879

DE SOTO

PLYMOUTH

Furniture-City Motors

Incorporated

792 N. Main St.

PHONE 3296

COMPLIMENTS

of

Slane Hosiery Mills

COMPLIMENTS OF

North Carolina Theatres

- ★ CENTER
- ★ BROADHURST
- ★ PARAMOUNT
- ★ CAROLINA
- ★ RIALTO

Carrick Service Station

North Main at Montlieu

"Our Service Is Sincere"

Gibson's
-16 HAYS GOULD-
ICE CREAM

COMPLIMENTS

of

Eagle Sandwich Shop

Compliments of

ECKERD'S

CUT RATE DRUG STORE

Creators of Reasonable Drug Prices

140 SOUTH MAIN ST.

A FRIEND

BETTY LOU SHOPPE

Women's Apparel — Millinery
Accessories

"A Store You Love to Visit"

111 SOUTH MAIN ST.

Some folks reduce by exercising; others eat in the college dining-hall.

HIGH POINT COLLEGE

GIDEON IRELAND HUMPHREYS, A.M., D.D., President

"IN THE HEART OF THE PIEDMONT"

MODERN FIRE-PROOF BUILDINGS

NON-SECTARIAN

CO-EDUCATIONAL

RATED STANDARD "A" GRADE BY STATE BOARD OF EDUCATION

Courses in Education, Language, History, Commerce, Home Economics, Science, Religious

Education, Music—leading to Degrees of A.B. or B.S.

Low Rates Put College Training in Reach of the Young with Limited Means

"A GROWING COLLEGE IN A GROWING CITY"

For Catalogue Apply to

PRESIDENT OR REGISTRAR

HIGH POINT COLLEGE

HIGH POINT, N. C.

STUDENTS' HEADQUARTERS

HIGH POINT COLLEGE BOOK STORE

Books — School Supplies — Refreshments

OFFICIAL COLLEGE RINGS AND JEWELRY

Lincoln Zephyr • Mercury • Ford

ENGLISH MOTOR CO.

Incorporated

WASHINGTON ST. AT WRENN

COMPLIMENTS

OF

PRINCESS CAFE

I held a hand the other night
So tenderly in mine
Words can not express the pleasure
I experienced at that time.

(Next page)

COMPLIMENTS

OF

SNOW LUMBER CO.

COMPLIMENTS OF

**W. A. DAVIS MILLING
COMPANY**

North State Telephone Co.

Serving High Point and Vicinity

Compliments of

CHARLES STORE

STYLE MERCHANDISE

High Point Floral Co.

QUALITY FLOWERS

1696 English St.

Phone 3166

**SHELL TIRE AND BATTERY
STATION**

"One Stop Service"

Shell Products, Exide Batteries, Tires

Phone 4349

720 N. Main St., High Point

PERKINSON'S

Incorporated

JEWELERS

For Quality Jewelry at
Reasonable Prices

We Appreciate Your
Patronage



110 N. MAIN

HIGH POINT

PERFECT
PROTECTION
AYS

EVERY WAY
EVERY DAY

N. L. GARNER, AGENCY

Occidental Life Insurance Company



226 Professional Building

Phone 4648

COMPLIMENTS

OF

New Service Laundry

I handled it as reverently
As anyone possibly could
And then caressed it slightly
For I thought anyone would.

(Next page)

THE KOPPER KETTLE

Home Made Sandwiches
and Cold Drinks

GREENSBORO ROAD

B. F. Hendrix, Inc.

YOUR FRIENDLY FURNITURE STORE

147-149 South Wrenn Street

HIGH POINT, N. C.

Compliments of

Beeson Hardware Co.

LYLES CHEVROLET CO., Inc.

Sales

CHEVROLET
Cars — Trucks

Service

HIGH POINT, N. C.

Thrift Has Its Reward at the

High Point Savings & Trust Co.

Conservative Banking Since 1905

Guilford General
Hospital

Harlee's

High Point's Quality Department
Store

Bill: "May I kiss you? May I please kiss you? Say,
are you deaf?"

Cleo: "NO! Are you paralyzed?"

Stolen



116 W. Washington Street
Phone 3455

CLOVER BRAND DAIRY
INCORPORATED

PHONE 4553

MILK — BUTTER — ICE CREAM

Students Meet at
RAINBOW DINER

NORTH MAIN AT ENGLISH

*Garland
Distributing
Company*

EDGAR SNIDER

"PRINTING THAT PROMOTES!"

"BOB" SNIDER, College Representative

460 North Wrenn Street

Dial 3242

You Could Have Bought It

De LUXE DINER

HIGH POINT, N. C.

Dixie Diner
Greensboro

Dixie Diner
Raleigh

Always The Best Place for Real Food

Mother: (entering room unexpectedly,:) Why, I
never"

Daughter: "Oh, mother, you must have."

OWL

For Gayer Parties

COME TO

The King Cotton Hotel

Acclaimed By You

As Best

TAL HENRY
THE COLLEGE ORCHESTRA



O'Henry Hotel

The College Banquet Place

**HIGH POINT PAPER BOX
COMPANY**

Incorporated

HIGH POINT, N. C.

W. C. Brown Shoe Shop

QUALITY SHOE SHOP

128 N. WRENN ST.

PHONE 4313

**FIVE POINTS SANDWICH
SHOPPE**

Sandwiches — Drinks

Phone 47315

TRY OUR FRIED CHICKEN SANDWICH

Compliments of

**CENTRAL ICE DELIVERY
COMPANY**

Phone 4507 - 512 W. Broad St.

"I adore you," I murmured softly,
"You are such a lovely thing."
It is so seldom that you see
Four aces and a king.

KOONCE FUNERAL HOME

Incorporated

PHONE 4545

Hedgecock Lumber

Company

1215 WORD ST.

PHONE 4006

COMPLIMENTS

OF

DUKE POWER COMPANY

THE
PHOTOGRAPHS

IN THIS ANNUAL
WERE MADE BY

Daniel & Smith
Studios

134½ Fayetteville Street

Raleigh, North Carolina



FINE PORTRAITS
PROMPT SERVICE



Largest College Annual
Photographers In The South



CHARLOTTE ENGRAVING CO.

School Annual Engravers

Charlotte, North Carolina

Autographs



Autographs

Autographs

