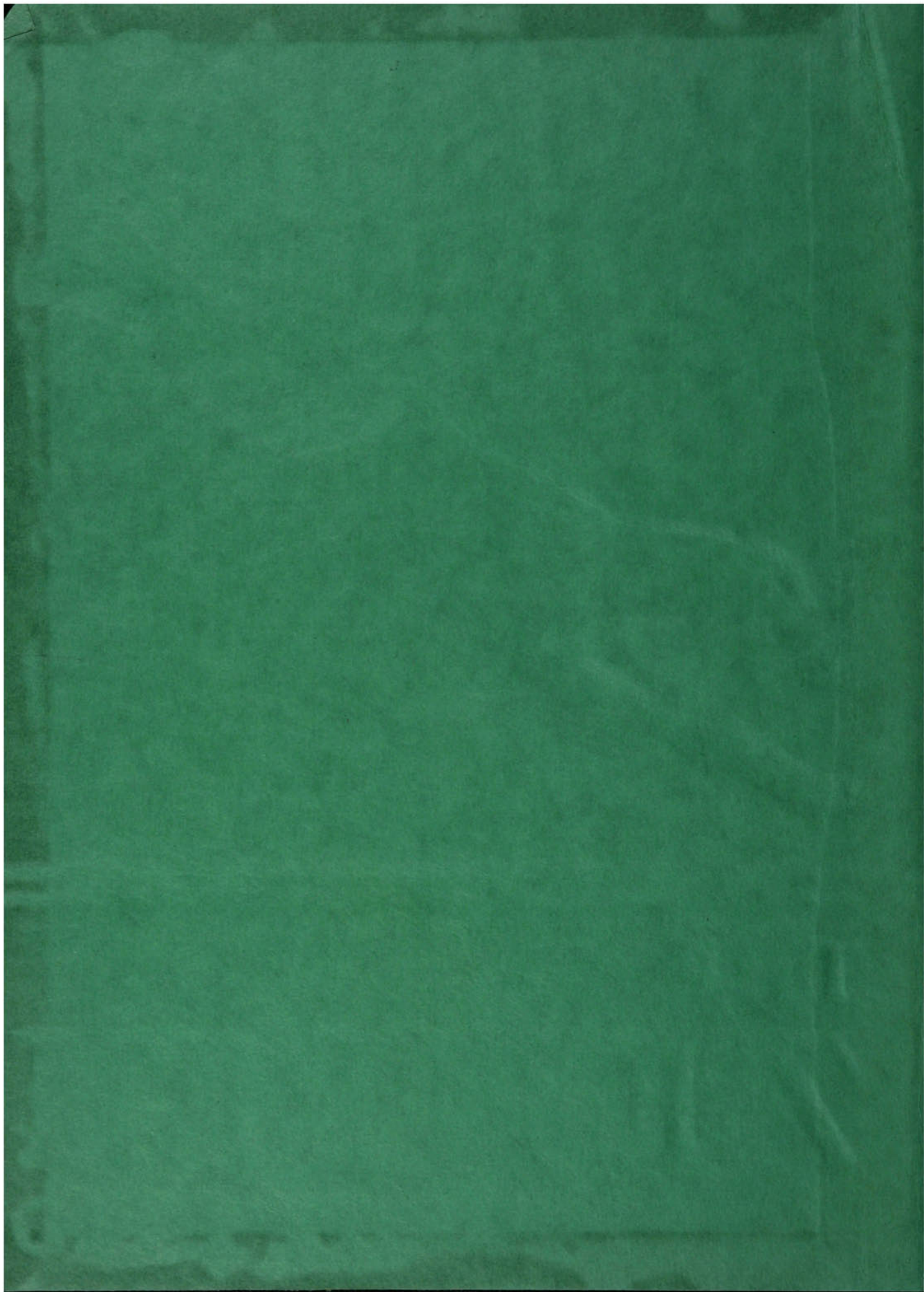




THE
ZENITH
OF 1940



WRENN MEMORIAL LIBRARY
HIGH POINT COLLEGE
HIGH POINT, N. C.

FOR REFERENCE

Duplicate

NOT TO BE TAKEN FROM THIS ROOM

CAT. NO. 1935

LIBRARY BUREAU



HELEN WALLER AND REGINALD HINSHAW PRESENT:

• • • T H E

Z E N



PUBLISHED ANNUALLY BY THE STUDENTS

WRENN MEMORIAL LIBRARY
HIGH POINT COLLEGE
HIGH POINT, N. C.

1 9 4 0

1940



OF HIGH POINT COLLEGE, HIGH POINT, N. C.

•
•
FOREWORD
•



• • COLLEGE •

THE WATCHFUL LITTLE PANTHER HAS ACCOMPANIED THE CANDID CAMERAMAN ON HIS TREK THROUGH THE YEAR 1940. TOGETHER, THEY HAVE CAUGHT YOU, DEAR STUDENT, AND PLACED YOU IN THIS, THE FOURTEENTH VOLUME OF THE "ZENITH." IF, IN VACANT OR IN PENSIVE MOOD, THESE LITTLE REPLICAS OF YOUR ACTIVITIES STRIKE UPON THAT INWARD EYE AND BRING YOU SMILES BECAUSE OF RECOLLECTIONS OF YOUR COLLEGE DAYS, THEN WE OF THE STAFF SHALL BE HAPPY.

ORGANIZATIONS • ATHLETICS • FEATURES

DEDICATION



TO

WILLIAM ARNOLD LAMBETH, D. D.

Zealous Christian Minister,
Genuine American Citizen,
Loyal Trustee of High Point College

Who by his generous spirit of un-
selfish service, has endeared himself
to all whose lives he has touched.

WE DEDICATE

THE ZENITH OF 1940





WILLIAM ARNOLD LAMBETH, D. D.

COLLEGE







GIDEON IRELAND HUMPHREYS, A.M., D.D., LL.D.
 President

BOARD OF TRUSTEES

H. A. MILLIS *President*
 N. M. HARRISON *Secretary*

DR. J. W. PRITCHARD
 DR. G. I. HUMPHREYS
 REV. J. C. AUMAN
 MR. C. F. FINCH
 MR. H. A. MILLIS
 MR. G. H. KEARNS
 MR. B. K. MILLOWAY
 REV. N. M. HARRISON

MR. C. C. ROBBINS
 MR. J. S. PICKETT
 DR. S. W. TAYLOR
 MR. L. F. ROSS
 MRS. M. J. WRENN
 MR. A. M. RANKIN
 DR. W. A. LAMBETH
 REV. J. E. PRITCHARD
 MR. R. M. COX

DR. J. H. CUTCHIN
 MR. CHAS. W. MCCRARY
 DR. J. D. WILLIAMS
 MR. J. M. MILLIKAN
 MR. J. NORMAN WILLS
 MR. F. LOGAN PORTER
 MRS. C. F. FINCH
 MR. E. T. TEAGUE

ADMINISTRATION AND FACULTY



MISS LOUISE ADAMS
A.M.
Instructor in Mathematics



J. HOBART ALLRED
A.M.
Professor of Modern Languages



BANKS APPLE
R. N.
College Nurse



ALLEN AUSTIN
B.S.
Assistant Promotional Secretary



HELEN R. BARTLETT
PH.D.
Associate Professor of History



MRS. ALDA T. BERRY
M.A.
Instructor in Business Department



MRS. ALMETTA BROOKS
B.S.
Instructor of Art



EDMOND O. CUMMINGS
PH.D.
Professor of Chemistry



E. BARTON DULAC
M.A.
Professor of Business Administration



WALTER R. FLEISCHMANN
A.M.
Instructor in Dramatics and Speech



MRS. WALTER R. FLEISCHMANN
B.A.
Instructor in Dramatics and Speech



WILLIAM H. FORD
A.M.
Assistant Professor of Business Administration



MRS. WILLIAM H. FORD
M.S.
*Professor of Home
Economics*



E. C. GLASGOW
A.B.
Instructor of English



MRS. LILLIAN M. GREEN
*House Mother,
Boy's Dormitory*



R. HOWARD GUNN
A.B.
*Instructor of Business
Administration*



JANET F. HALL
Instructor in Music



NATHANIEL M. HARRISON
B.D.
Promotional Secretary



BENJAMIN H. HILL
Ph.D.
Professor of Biology



CLIFFORD R. HINSHAW
A.M., LITT.D.
*Professor of Education
and Psychology*



E. VERA IDOL
A.M.
Professor of English



C. LUCILLE JOHNSTON
Ph.B.
Secretary to President



PAUL S. KENNETT
B.D., LL.D.
Professor of History



HARRIET KILLOUGH
B.S.
Dietitian



PERCY E. LINDLEY
A.M., LITT.D.
*Dean of College and
Professor of Religious
Education*



A. C. LOVELACE
A.B., M.ED.
*Assistant Professor of
Education*



MRS. MABEL T. MILLIKAN
A.B.
*Social Director of
Woman's Hall*



J. HARLEY MOURANE
M.S.
*Professor of Chemistry
and Physics*

ADMINISTRATION AND FACULTY



PAUL SCOTT OWEN
M.A.
*Assistant Professor of
Business Administration*



MRS. CULLEN B. OWENS
MUS.B., SCH. MUS.B.
Head of Music Department



DONALD J. RULFS
M.A.
Professor of English



GERTRUDE STRICKLER
B.S., A.M.
*Director of Physical
Education for Women*



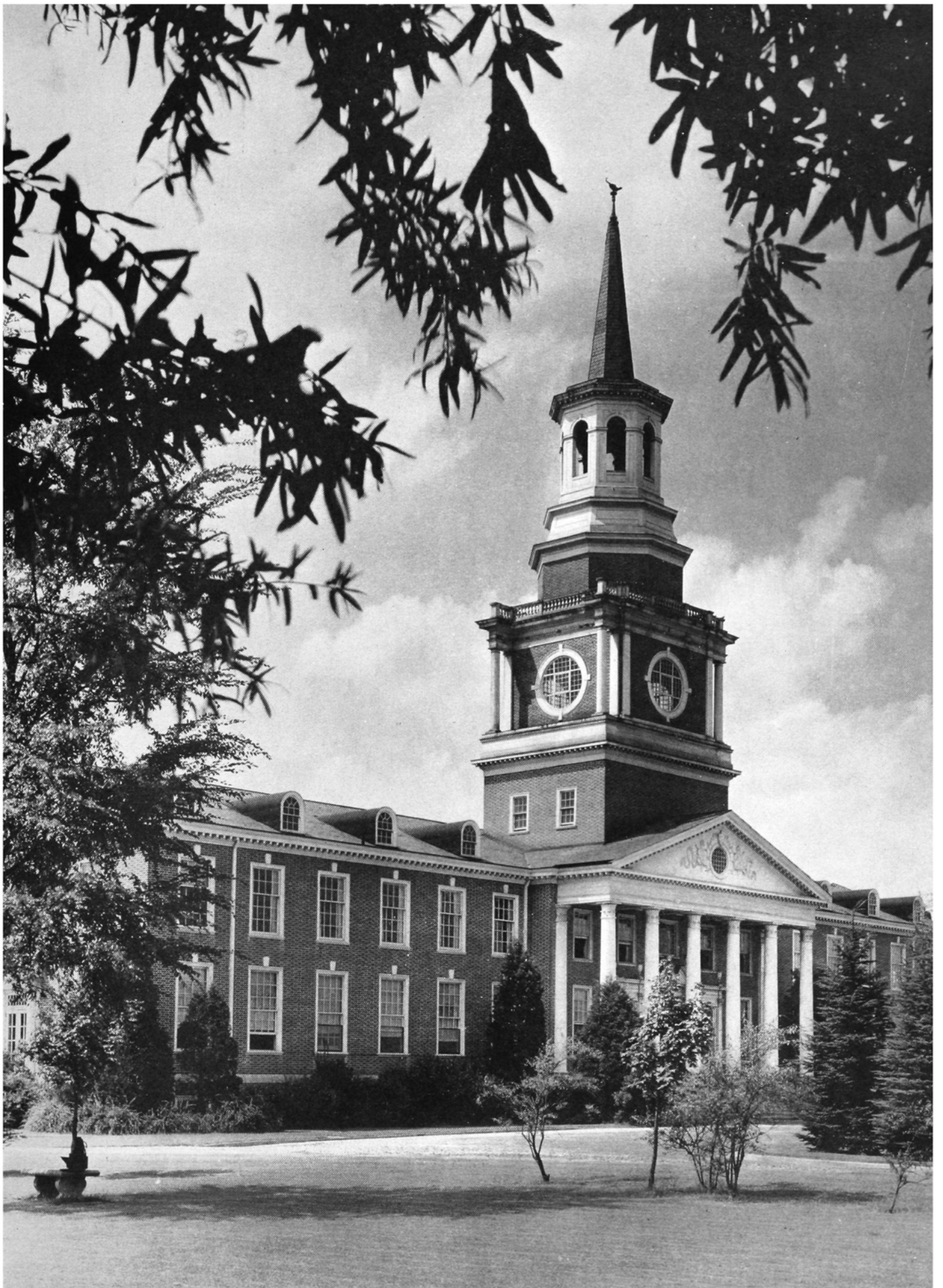
MRS. ALICE PAIGE WHITE
A.M.
*Librarian and
Professor of Greek*



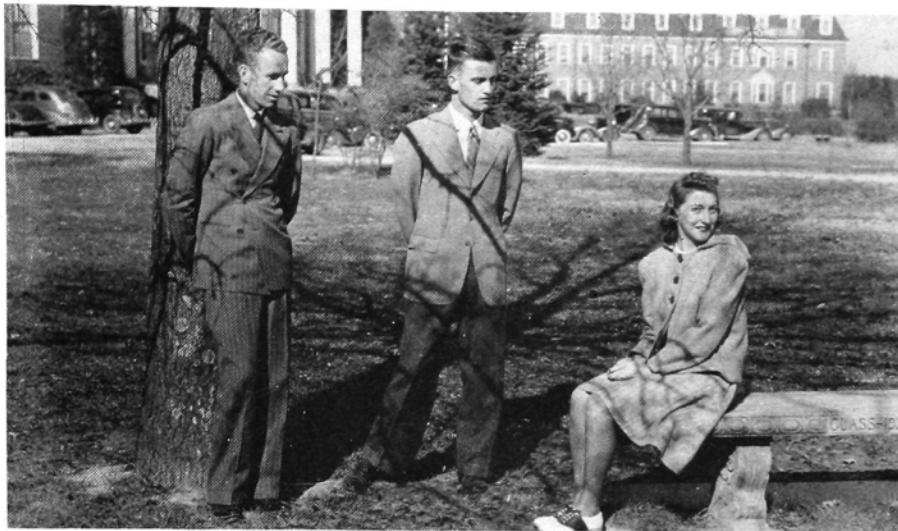
NATHANIEL P. YARBROUGH
A.M.
*Associate Professor of
Modern Languages*



C. VIRGIL YOW
A.B.
*Director of Physical
Education for Men*







Bond, Williams, Coble.

OFFICERS

ARCHIE WILLIAMS *President*

BEVERLY BOND *Vice-President*

BECKY COBLE *Secretary-Treasurer*



SENIOR CLASS

EMILIE BANKS APPLE, R.N.

KERNERSVILLE, N. C.

A.B.

Sigma Alpha Phi

Burrus Memorial Hospital, '37; W. A. A.,
1, 2, 3; Modern Priscilla, 2, 3; ZENITH, 2;
Footlighters, 3; Who's Who, 3.

FORRESTER C. AUMAN

SEAGROVE, N. C.

B.S.

Football, 3, 4; Christian Endeavor, 1, 2, 3,
4; Akrothinian Literary Society, 1, 2, 3; Hi-
Po, 3.

R. STANLEY BERG

CHARLOTTE, N. C.

A.B.

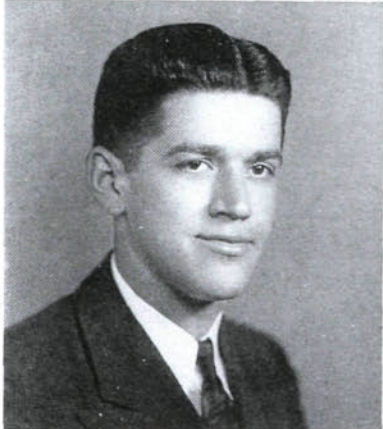
Central Bible Institute, 1, 2; Baseball, 3.

HELEN GERTRUDE BLACKBURN

GREENSBORO, N. C.

B.S.

Commercial Club, 1; Honor Roll, 2, 3; In-
ternational Relations Club, 4; Future Teach-
ers Club, 4.



SENIORS

SENIORS



BEVERLY EARL BOND

HAYNESVILLE, LA.

A.B.

Epsilon Eta Phi

Secretary, North Carolina Student Ministerial Association, 1; Vice-President, Senior Class; Thalean Literary Society, 1, 2, 3, 4; President, 4; Soccer, 3; Who's Who, 4; Hi-Po, 1, 2, 3, 4; Editor, 4.

JOHN F. CAGLE

HIGH POINT, N. C.

A.B.

Thalean Literary Society, 1; Ministerial Association, 1, 2, 3, 4; Vice-President, 2, 4.

MARY HILLIARD CARRAWAY

HIGH POINT, N. C.

A.B.

Artemesian Literary Society, 1, 2, 3, 4; Honor Roll, 3; Footlighters, 4; Future Teachers, 4; Tumbling, 1; International Relations Club, 4.

LAWRENCE WILLIAM CARTER

NEW YORK, N. Y.

B.S.

Band, 3, 4; Soccer, 3, 4; Engineers' Club, 3, 4; Vice-President, 4.

REBECCA COBLE

HAW RIVER, N. C.

B.S.

Sigma Alpha Phi

Treasurer, Class, 1; Woman's Athletic Association, 1, 2, 3, 4; Artemesian Literary Society, 1, 2, 3, 4; Modern Priscilla, 1, 2, 3, 4; Secretary 2; Vice-President, 3; President, 4; Honor Roll, 1, 2; Secretary, Class, 4; Future Teachers, 4; Marshal, 3.

LOUISE HOLT COLE

WISE, N. C.

A.B.

Sigma Alpha Phi

Artemesian Literary Society, 1, 2, 3, 4; Basketball, 1; Christian Endeavor, 1, 2, 3, 4; Class Manager, 4.

ADELAIDE VIRGINIA CONNOR

DANVILLE, VA.

B.S.

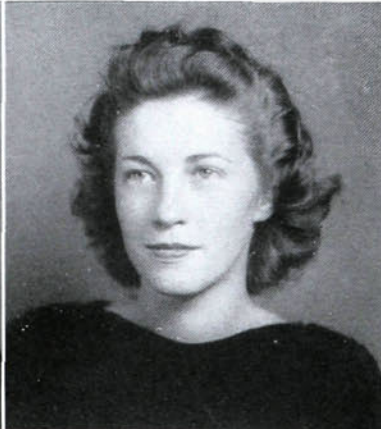
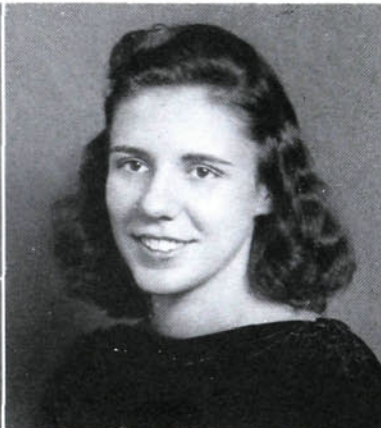
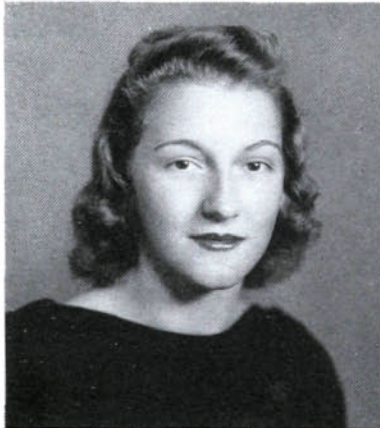
Nikanthan, 1, 3; Avertte College, 2; Modern Priscilla, 1, 3, 4; Woman's Athletic Association, 1, 3, 4; Christian Endeavor Society, 1.

ANNA ELIZABETH DARR

THOMASVILLE, N. C.

B.S.

Artemesian Literary Society, 2, 3, 4; Woman's Athletic Association, 1, 2.



SENIORS

SENIORS



HELEN BESS DAVIS

ENFIELD, N. C.

B.S.

Flora MacDonald, 1; Artemesian Literary Society, 2, 3, 4; Pre-Law Club, 4; Dormitory Council, 4.

GEORGE E. ELKINS

LIBERTY, N. C.

B.S.

Epsilon Eta Phi

Akrothinian Literary Society, 1, 2, 3, 4; Secretary, 2; Vice-President, 3; President, 4; A Cappella Choir, 1, 2, 3; President, 3; Manager Basketball, 3; Pan-Hellenic Council, 4; President, 4; Class President, 2.

K. VESTAL FERGUSON

GRAHAM, N. C.

B.S.

Guilford, 1; W. C. U. N. C., 2; Modern Priscilla, 3, 4; Treasurer, 4; Woman's Athletic Association, 3, 4; Reporter, 4; Nikanathan Literary Society, 3, 4; Christian Endeavor Society, 3; B. S. U., 4.

JENNIE RUTH FISHER

RICHFIELD, N. C.

A.S.

Pfieffer Junior College, 1, 2; Woman's Athletic Association, 3, 4; Class Manager, 4; Artemesian Literary Society, 3, 4; Future Teachers Club, 4; International Relations Club, 3.

SIBYL ELEANOR FOWLER

PINNACLE, N. C.

A.B.

Sigma Alpha Phi

Christian Endeavor Society, 1, 2, 3, 4; Nikanthan Literary Society, 1, 2, 3, 4; Woman's Athletic Association 3, 4; ZENITH Staff, 4; Future Teachers Club, 4.

SEYMOUR HOLIDAY FRANKLIN

FREEPORT, N. Y.

A.B.

Iota Tau Kappa

Football, 2, 3, 4; Co-Captain, 3, 4; Basketball, 3; Class Basketball, 2, 4; Baseball, 2, 4; Hi-Po, 3, 4.

RUTH VICKREY FUTRELLE

GREENSBORO, N. C.

B.S.

Modern Priscilla Club, 1, 2, 3, 4; Treasurer, 2; Nikanthan Literary Society 4.

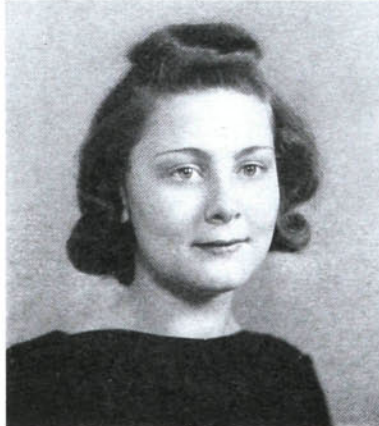
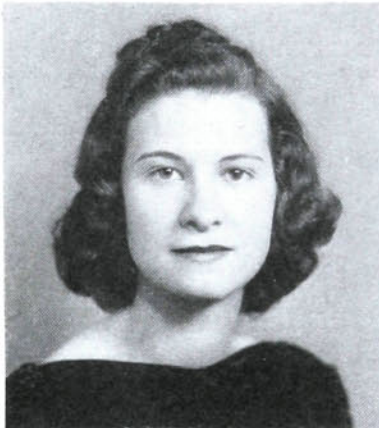
H. BEURON GARLINGTON

POLLOCK, LA.

B.S.

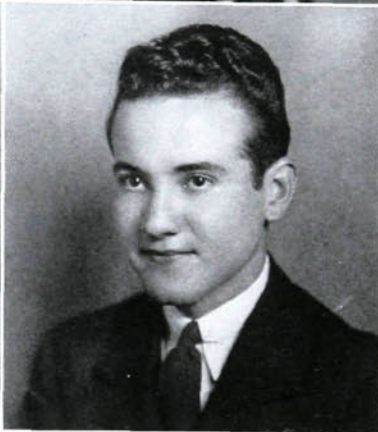
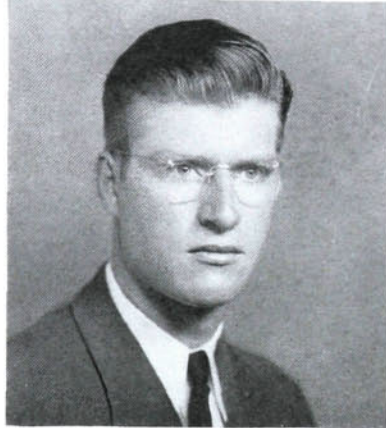
Epsilon Eta Phi

Thalean Literary Society, 1; Soccer, 1; Basketball, 1, 2.



SENIORS

SENIORS



FLORENCE MILDRED GRANT

GARYSBURG, N. C.

A.B.

Nikanthan Literary Society, 1, 2, 3, 4;
 Woman's Athletic Association, 1, 2, 3, 4;
 Class Manager, 4; Christian Endeavor Society, 1, 2, 3, 4.

JOE HUTCHINSON GRAY

HIGH POINT, N. C.

B.S.

Epsilon Eta Phi

Akrothian Literary Society, 1, 2, 3; Treasurer, 2; Circulation Manager, Hi-Po, 2; Vice-President, Class, 2; Junior Marshal, 3; Student Council, 4; Treasurer, Council, 4.

HUGH HAMPTON

RUTHERFORDTON, N. C.

B.S.

Epsilon Eta Phi

Varsity Basketball, 1, 2, 3, 4; Captain, 4; Soccer Coach, 4; Baseball, 1, 2, 3, 4; Akrothian Literary Society, 1, 2, 3.

HERBERT FRANK HARTMAN

ADVANCE, N. C.

B.S.

Epsilon Eta Phi

Thalean Literary Society, 1, 2; Dormitory Council, 1; Student Council, 2; Class President, 3.

FRANK HEGE

LEXINGTON, N. C.

B. S.

Epsilon Eta Phi

Commercial Club, 1; Y. M. C. A., 1; ZENITH, 2; Akrothinian Literary Society, 2, 3, Secretary 2, President 3; Dormitory Council, 2, 3, 4, Vice-President, 3, President, 4; Hi-Po 3, Circulation Manager 3; International Relations Club, 3, 4; Business Manager Student Handbook, 3, 4.

DIXIE BROWN HELMS

RANDLEMAN, N. C.

A. B.

Meredith College, 1; Artemesian Literary Society, 2, 3, 4; Christian Endeavor, 2, 3, 4; W. A. A., 2, 3, 4; International Relations Club, 3, 4; B. S. U., 1, 2, 3, 4; Future Teachers Club, 4.

RUTH HEPLER

THOMASVILLE, N. C.

A. B.

Alpha Theta Psi

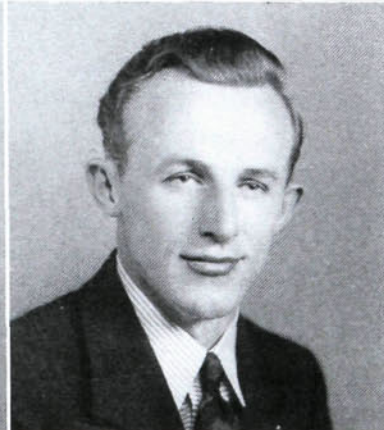
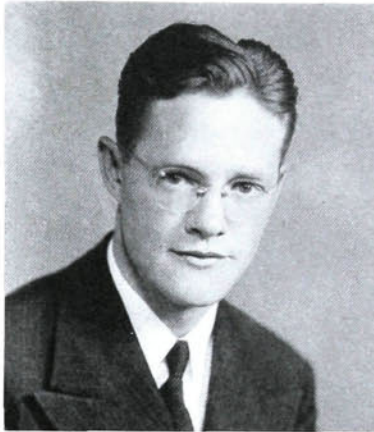
Artemesian Literary Society, 1, 2, 3; A Cappella Choir, 1, 2.

JOSEPH MALLARD HILLIARD

THOMASVILLE, N. C.

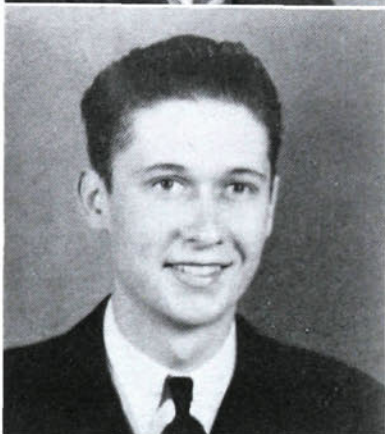
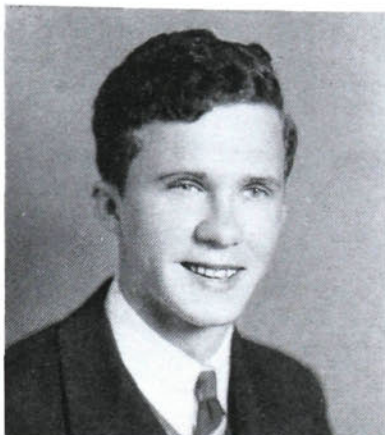
B. S.

Thalean Literary Society, 3; Freshman Basketball, 1; International Relations Club, 3.



SENIORS

SENIORS



REGINALD HINSHAW

HIGH POINT, N. C.

A.B.

Iota Tau Kappa

Student Council, 1, 4; President, Boy's Day Council, 4; Y. M. C. A., 1; Akrothian Literary Society, 1, 2, 3; Marshal, 1; Critic, 3; Hi-Po, 1, 2; Sports Editor, 2; Tennis, 1, 2, 3, 4; Football Manager, 2; Freshman Bas-Lighted Lamp, 3, 4; Athletic Council, 3, 4; ketball; Chief Marshal, 3; Who's Who, 4; ZENITH, 3, 4; Business Manager, 4; Foot-lighters, 3, 4; International Relations Club, 4; Future Teachers Club, 4.

PERCY HOLLAND

BERLIN, MD.

B.S.

Band, 2, 3, 4.

LAWRENCE BYERLY HOLT

LEXINGTON, N. C.

A.B.

International Relations Club, 3, 4; President, 3; Forensic Council, 4; Ministerial Association, 1, 3, 4; Vice-President, 3; Law Club, 4; A Cappella Choir, 1, 3, 4; Akrothian Literary Society, 1, 3; Secretary, 3; Inter-collegiate Debater, 1, 3, 4; Christian Endeavor, 1, 3; Footlighters, 4; Honor Roll, 1, 3; Hi-Po, 1, 3, 4.

NELL ELIZABETH HOLTON

HIGH POINT, N. C.

A.B.

Theta Phi

Woman's Athletic Association, 1, 2, 3, 4; A Cappella Choir, 1, 2, 3; Class Treasurer, 3; Marshal, 3; President, Girl's Day Council, 4; Student Council, 4; Honor Roll, 3; Pan-Hellenic Council, 4.

LILLIE ESTELLE HOPKINS

NORWOOD, N. C.

A.B.

Pfeiffer, 1, 2; Christian Endeavor, 3, 4; B. S. U., 3, 4; B. Y. P. U., 3, 4, President, 4; Future Teachers Club, 4; Ministerial Association 4; Nikanthan Literary Society, 3, 4.

ANNIE HALL HOWELL

THOMASVILLE, N. C.

A.B.

Chowan College 1; Artemesian Literary Society, 2, 3, 4; Christian Endeavor 2, 3; International Relations, 3; Future Teachers Club, 4; B. S. U., 3, 4.

ROBERT L. JOHNSON

DENTON, N. C.

B.S.

Delta Alpha Epsilon

Student Government, 3, 4, Vice-President, 3, President, 4; Thalean Literary Society, 1, 2, 3, 4; Forensic Council, 3; Lighted Lamp, 3, 4.

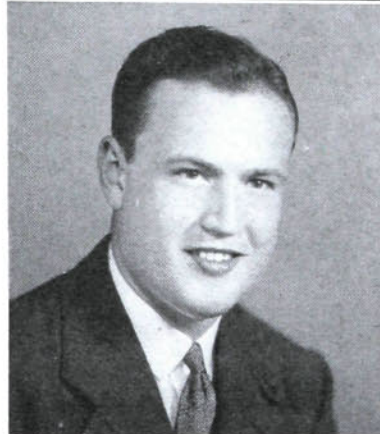
ALICE LOUISE JONES

THOMASVILLE, N. C.

A.B.

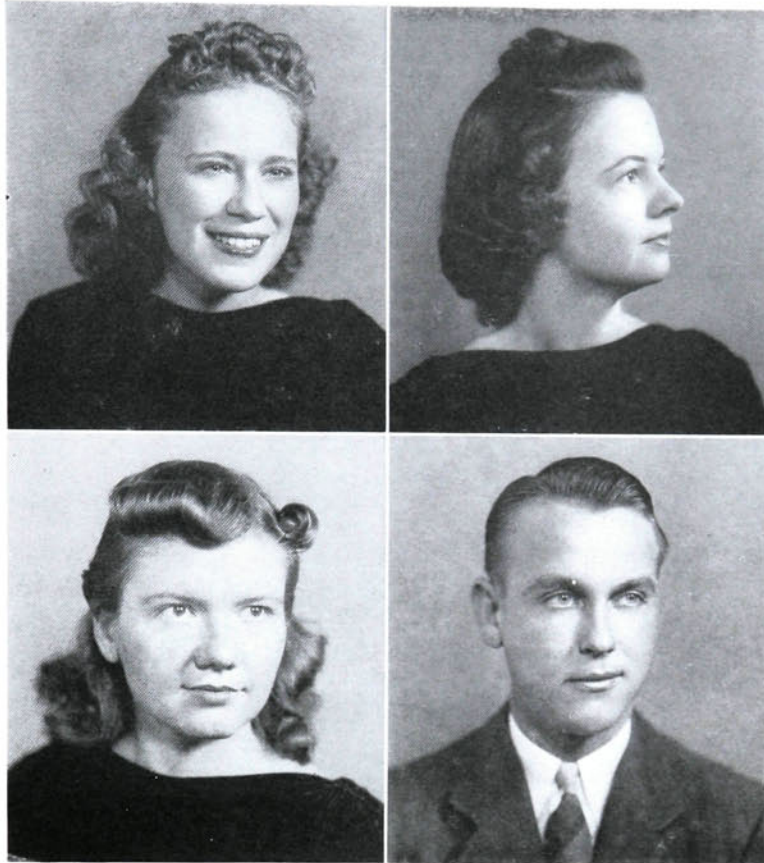
Alpha Theta Psi

Artemesian Literary Society, 2, 3, 4.



SENIORS

SENIORS



MARY JEAN KALLAM

LAWSONVILLE, N. C.

A.B.

E. C. T. C., 1, 2.

ESTHER ELIZABETH KIVETT

HIGH POINT, N. C.

A.B.

Alpha Theta Psi

Nikanthan Literary Society, 1, 2, 3, 4; Secretary, 2; Vice-President, 3; Ministerial Association, 2; Pan-Hellenic Council, 4; Secretary, 4.

MABEL ESTHER KOONTZ

HIGH POINT, N. C.

A.B.

Hi-Po, 2, 4; Nikanthan Literary Society, 1, 2, 4; A Cappella Choir, 1, 2; International Relations Club, 3, 4; Debating Club, 2, 4; Orchestra, 1, 2.

WILLIAM DAVIS LOCKE

ENFIELD, N. C.

B.S.

Iota Tau Kappa

Thalean Literary Society, 1, 2, 3, 4; Dormitory Council, 4; Basketball Manager, 4.

MARC HOYLE LOVELACE

HIGH POINT, N. C.

A.B.

Iota Tau Kappa

Band, 3, 4; Thalean Literary Society, 3, 4; A Cappella Choir, 3; Honor Roll, 3, 4; Vice-President, Class, 1; Vice-President, Class, 3; College Marshal, 3; Lighted Lamp, 3, 4; Who's Who, 4; Intercollegiate Debater, 3, 4; International Relations Club, 3, 4.

DANEASE GRAYSON MANLEY

HIGH POINT, N. C.

A.B.

Alpha Theta Psi

Artemesian Literary Society, 1, 2, 3, 4.

HILDA MARTIN

RICH SQUARE, N. C.

B.S.

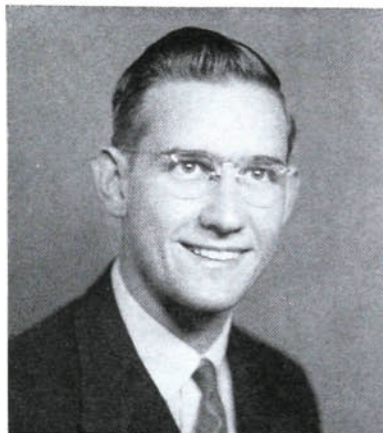
E. C. T. C., 1, 2, 3; B. S. U., 4; International Relations Club, 4; Nikanathan Literary Society, 4.

MARGUERITE BRUCE McCASKILL

BLANEY, S. C.

A.B.

Nikanathan Literary Society, 2, 3; President, 3; International Relations Club, 2, 3; Future Teachers Club, 3; Who's Who, 3.



SENIORS

SENIORS



HORACE MCKINNEY

HIGH POINT, N. C.

A.B.

DORIS VIRGINIA METGER

FROSTBURG, MD.

A.B.

Blue Ridge College, 1; Woman's Athletic Association, 2, 3, 4; Artemesian Literary Society, 2, 3, 4; Honor Roll, 3; Footlighters, 3, 4; Christian Endeavor Society, 2, 3; A Cappella Choir, 2, 3; International Relations Club, 3.

ESTHER CLARISSA MIRAN

TORRINGTON, CONN.

B.S.

Sigma Alpha Phi

Marshal, 3; Who's Who, 4; Dormitory Council, 3; Woman's Athletic Association, 1, 2, 3, 4; Class Manager, 1, 3; President, 4; Christian Endeavor, 1, 2, 3, 4; Nikanathan Literary Society, 1, 2, 3, 4; Monitor, 2; Modern Priscilla Club, 1, 2, 3, 4; Secretary, 3; Vice-President, 2; Class Treasurer, 2; Class Secretary, 3; Future Teachers, 4; Individual Volley Ball Award, 3.

NELLIE GRAHAM MOORE

DELCO, N. C.

B.S.

Pfiever Junior College, 1, 2; Christian Endeavor, 4; B. S. U., 3, 4; Vice-President, 3; President, 4; B. Y. P. U., 3, 4; Individual Basketball Award, 3; Ministerial Association, 4; Modern Priscilla Club, 3, 4; Future Teachers, 4.

OLIVE MYERS
HIGH POINT, N. C.
A.B.

RUTH MADELINE MYERS
HIGH POINT, N. C.
A.B.

Nikanthan Literary Society, 3, 4; International Relations, 3, 4; Future Teachers Club, 4; Honor Roll, 3, 4.

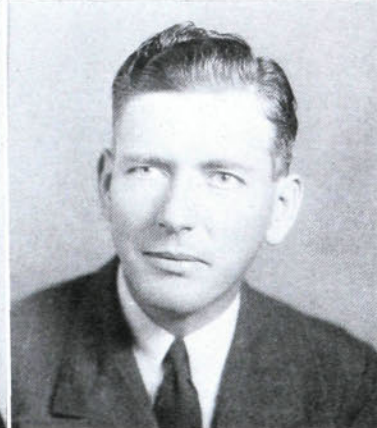
IVA PEARL NICHOLSON
GRAHAM, N. C.
B.S.

E. C. T. C., 1; W. C. U. N. C., 2; Modern Priscilla, 3, 4; Artemesian Literary Society, 3, 4; W. A. A., 3, 4; B. S. U., 3, 4.

SIMEON BYRON NIFONG
WINSTON SALEM, N. C.

A.B.

Ministerial Association, 1, 2, 3, 4, Chaplain, 4.



SENIORS

SENIORS



JAMES TALUM ODOM

MT. OLIVE, N. C.

A.B.

Campbell College, 1, 2.

ALICE OVERMAN

HIGH POINT, N. C.

B. S.

W. C. U. N. C., 1, 2; Band, 3, 4; A Cap-
pella Choir, 3; Nikanthen Literary Society,
3, 4.

MAE SUE PEGRAM

HIGH POINT, N. C.

A.B.

A. S. T. C., 1, 2, 3.

MARY RUTH PEELER

MCCUTCHEVILLE, OHIO

A.B.

Pfeiffer, 1, 2; International Relations Club,
4; Future Teachers Club, 4; Artemesian Lit-
erary Society, 3, 4; Chaplain, 4.

WILLIAM EDGAR POOVEY

HIGH POINT, N. C.

B.S.

Brevard College, 1; Akrothinian Literary Society, 3, 4; Track, 3.

WILLIAM ALEXANDER RENNIE

METHUEN, MASS.

A.B.

Honor Roll, 1, 2, 3; Football, 3; Band, 2, 3, 4; Thalean Literary Society, 1, 2, 3, 4; President, State Student Ministerial Association, 2; Who's Who, 4.

P. H. SCARBORO, JR.

CONCORD, N. C.

B.S.

Iota Tau Kappa

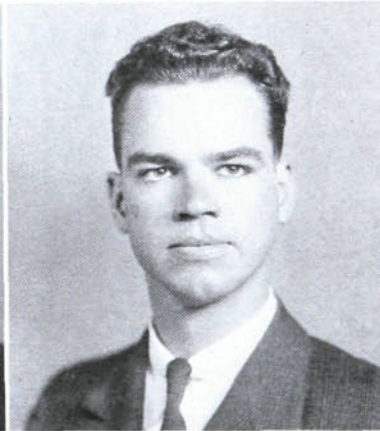
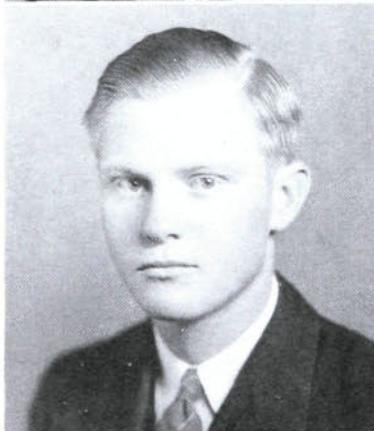
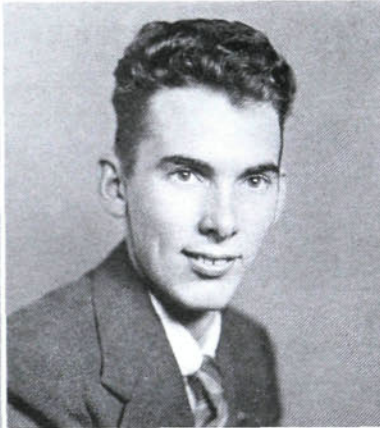
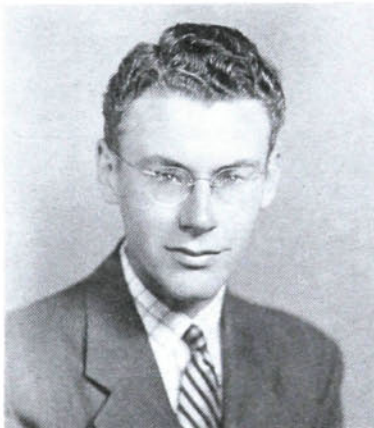
Pfeiffer, 1, 2; Thalean Literary Society, 3, 4; Secretary, 4; Band, 3, 4.

CHARLES SHARPE

GREENSBORO, N. C.

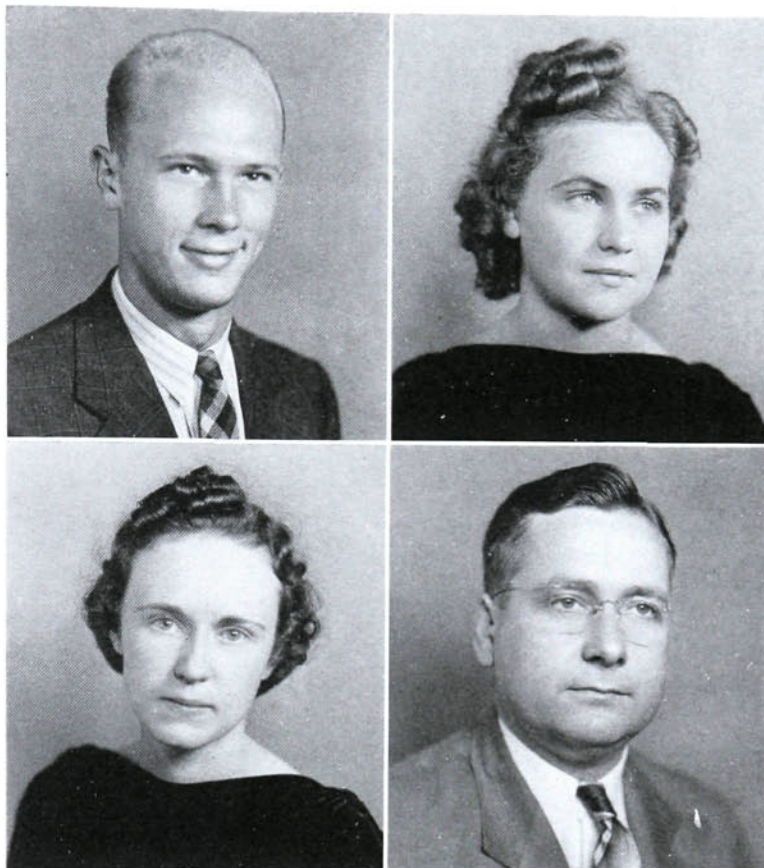
A.B.

Guilford College, 1, 2; Ministerial Association, 3, 4; Footlighters, 3, 4.



SENIORS

SENIORS



RICHARD ADDISON SHORT

HIGH POINT, N. C.

B.S.

Tennis, 3, 4; Soccer, 1, 2; Block "H" Club,
3, 4.

MARGARET VIRGINIA SINK

HIGH POINT, N. C.

B.S.

Honor Roll, 2, 3; Commercial Club, 1; Ni-
kanthan Literary Society, 2, 3, 4; Interna-
tional Relations Club, 4; Future Teachers
Club, 4.

MRS. FERN SMITH

HIGH POINT, N. C.

A.B.

Wingate, 1, 2, 3; Future Teachers Club, 4.

E. M. SMITH

HIGH POINT, N. C.

A.B.

Wingate, 1, 2; Wake Forest, 3; B. S. U. 4;
Ministerial Association, 4; Future Teachers
Club, 4.

LEE ROY SPENCER, JR.

HIGH POINT, N. C.

A.B.

Ministerial Association, 1, 2, 3, 4, President, 3; International Relations Club, 3, 4, President, 4; Debate Club, 4; Akrothian Literary Society, 3, 4; Chaplain, 3; Forensic Council, 4.

RICHARD BERNARD STOLACK

BROOKLYN, N. Y.

B.S.

Manager Football Team, 2, 3; Block "H" Club, 2, 3, 4; Akrothian Literary Society, 1, 2, 3, 4; Dramatic Club, 2; Medical Club, 4; Track, 2, 3.

JESSE LEE SWINSON

CHARLOTTE, N. C.

A.B.

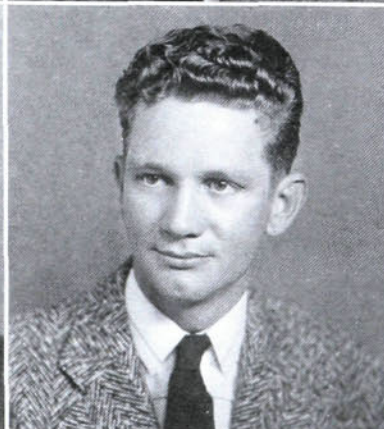
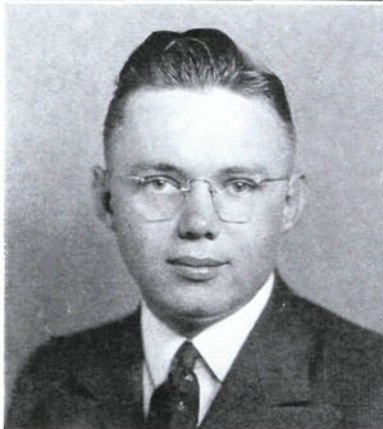
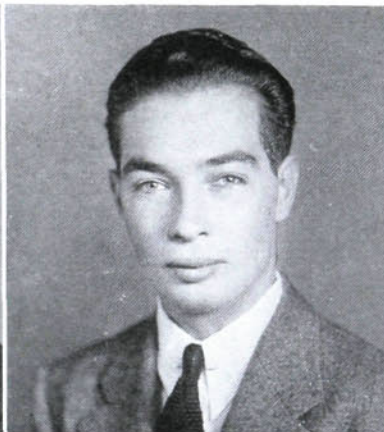
Columbia Bible Institute, 1, 2; Baseball, 3, 4; Footlighter's, 3, 4; Ministerial Association, 3, 4; Honor Roll, 3, 4; Christian Endeavor, 3, 4.

HENRY TERRY

MCCALL, S. C.

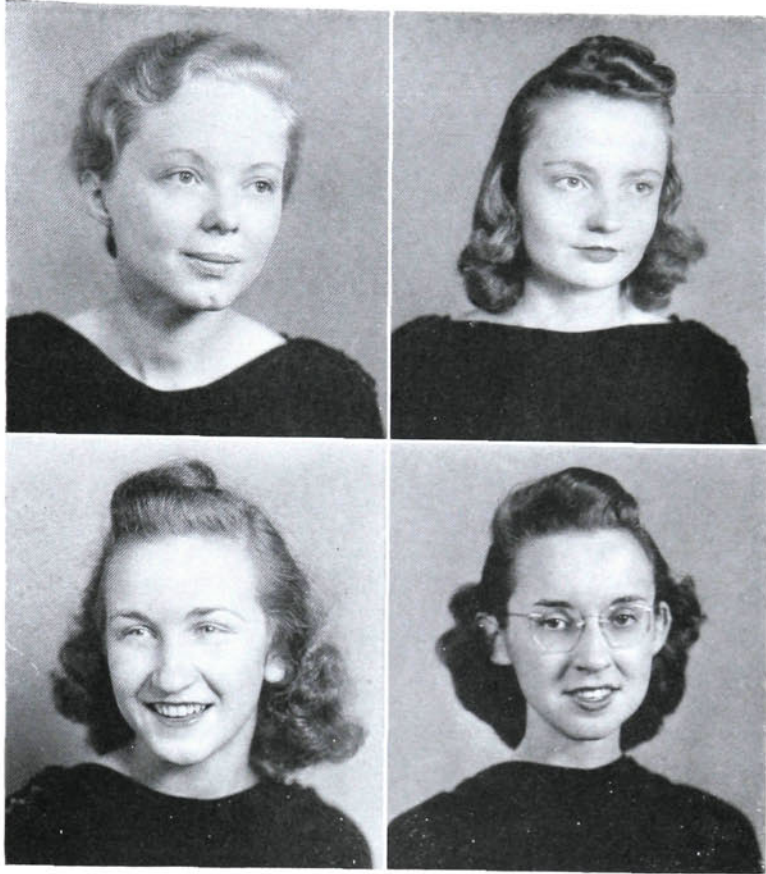
B.S.

Delta Alpha Epsilon Band, 1, 2, 3, 4.



SENIORS

SENIORS



ANNA MARGARET TESH

LEXINGTON, N. C.

A.B.

Greensboro College, 1; Ministerial Association, 2, 3, 4; Secretary, 4; Future Teachers Club, 4; Christian Endeavor, 4; International Relations Club, 4; Honor Roll, 3, 4.

RUTH MERELYN THOMPSON

THOMASVILLE, N. C.

B.S.

Theta Phi

Artemesian Literary Society, 1, 2, 3, 4; Vice-President, 3; Modern Priscilla Club, 2, 3, 4; Woman's Athletic Association, 2, 3, 4; Dormitory Council, President, 4; Student Government, 4.

LAURA EDITH VANCE

HIGH POINT, N. C.

A.B.

Theta Phi

Artemesian Literary Society, 1, 2, 3, 4; Secretary, 2; Treasurer, 3; President, 4; Commercial Club, 1; A Cappella Choir, 1, 2, 3; Secretary, 2; Student Council, 2; Day Student Council, 4; Band, 3, 4; Woman's Athletic Association, 1, 2.

HELEN WALLER

KINSTON, N. C.

B.S.

Sigma Alpha Phi

Woman's Athletic Association, 1, 2, 3, 4; Christian Endeavor, 1, 2, 3; Secretary, 2; Dormitory Council, 2, 3; Treasurer, 2; Secretary, 3; Nikanathan Literary Society, 1, 2, 3, 4; Treasurer, 3; Critic 4; Student Council, 4; ZENITH Staff, 3, 4; Editor, 4; Marshal, 3.

VEREL JEANETTE WARD

LIBERTY, N. C.

B.S.

Sigma Alpha Phi

Commercial Club, 1; Christian Endeavor, 1, 2, 3, 4; Nikanathan Literary Society, 1, 2, 3, 4; Student Council, 1, 3, 4, Secretary, 4; Zenith, 3, 4.

SPURGEON WARNER

GUILFORD, COLLEGE, N. C.

A.B.

Guilford, 1, 2, 3.

VERA JOSEPHINE WEANT

HIGH POINT, N. C.

A.B.

Alpha Theta Psi

Nikanathan Literary Society, 2, 3, 4.

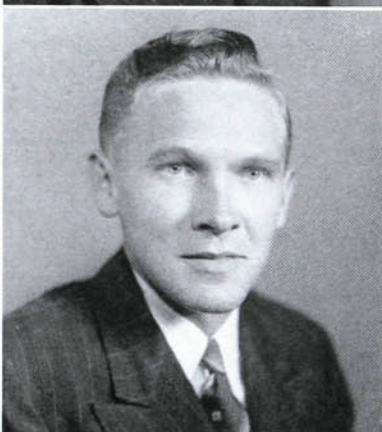
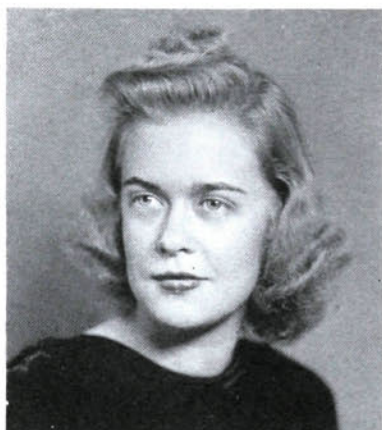
EDGAR STRICKLAND WELBORN, JR.

THOMASVILLE, N. C.

A.B.

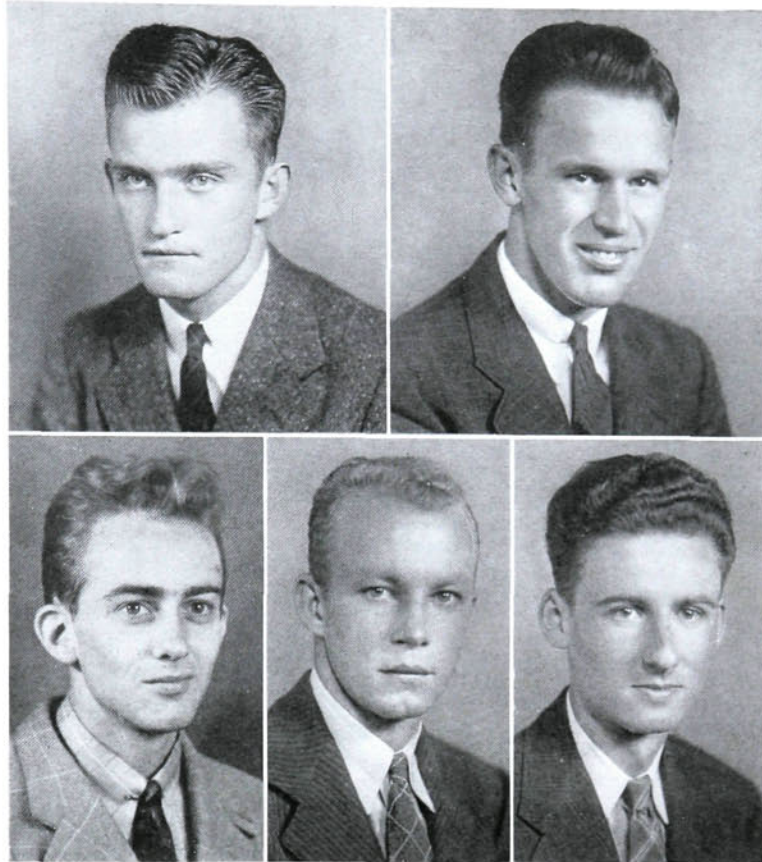
Epsilon Eta Phi

Dormitory Council, 3, 4; Vice-President, 3; Akrothianian Literary Society, 1, 2, 3, Treasurer, 3; Freshman Basketball, 1; Junior Varsity, 2.



SENIORS

SENIORS



ARCHIE GRAY WILLIAMS

WENDELL, N. C.

B.S.

Epsilon Eta Phi

Akrothian Literary Society, 1, 2, 3; Secretary, 3; President, Class, 4.

FOY ALEXANDER WOFFORD

LEXINGTON, N. C.

A.B.

Christian Endeavor, 1, 2, 3, 4; Akrothian Literary Society, 1, 2, 3; Chaplain, 2; Marshal, 3; Manager, Baseball Team, 2.

C. ARTHUR YORK

HIGH POINT, N. C.

A.B.

Delta Alpha Epsilon

Akrothian Literary Society, 1, 2, 3; Freshman Basketball, 1; Student Council, 3; Law Club, 4.

WILLIAM ELMER YOUNG

HIGH POINT, N. C.

B.S.

Epsilon Alpha Phi

HAL D. YOW

GIBSONVILLE, N. C.

B.S.

Class President, 1; Baseball, 1, 2, 3, 4; Manager, Football, 4; Akrothian Literary Society, 1, 2.



Alma Mater

*In our hearts we hold the mem'ry
Of a place we love the best;
O'er it waves the purple banner,
Emblem of its fearlessness.*

Chorus

*We praise thy name and honor true,
They stand for loyalty and love;
May yours be fame that to you is due
For you we'll always fight,
We want the right
To uphold thy standards high;
To give the best we have to thee,
Mem'ries of you we will cherish,
H. P. C.*

*When we're on the field of battle,
When we strive for praise to thee;
May our teams be undefeated,
Ours the crown of victory.*



Koontz, Spainhour, Crowder, Clifton.

OFFICERS

BURKE KOONTZ	<i>President</i>
ROBERT CLIFTON	<i>Vice-President</i>
RACHEL SPAINHOUR	<i>Secretary</i>
HELEN CROWDER	<i>Treasurer</i>

•

JUNIOR CLASS



J U N I O R C L A S S

EVELYN ATKINS
HIGH POINT, N. C.

JANE AUSTIN
HIGH POINT, N. C.

BLAINE BAXTER
FALLSTON, N. C.

WILLIAM BENNETT
HIGH POINT, N. C.

OLIN BLICKENSERFER
GARY, IND.

HELEN BROWN
ASHEBORO, N. C.

WILLIAM BALLARD
ALBEMARLE, N. C.

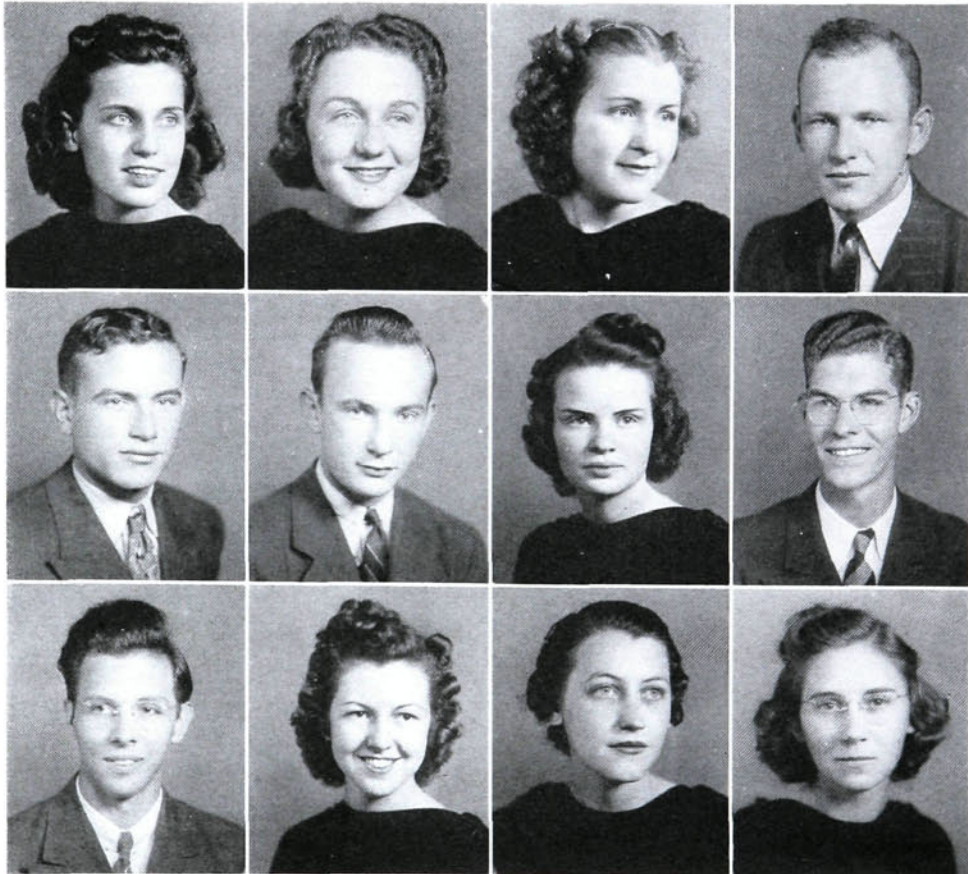
MARGARET BAIRD
HIGH POINT, N. C.

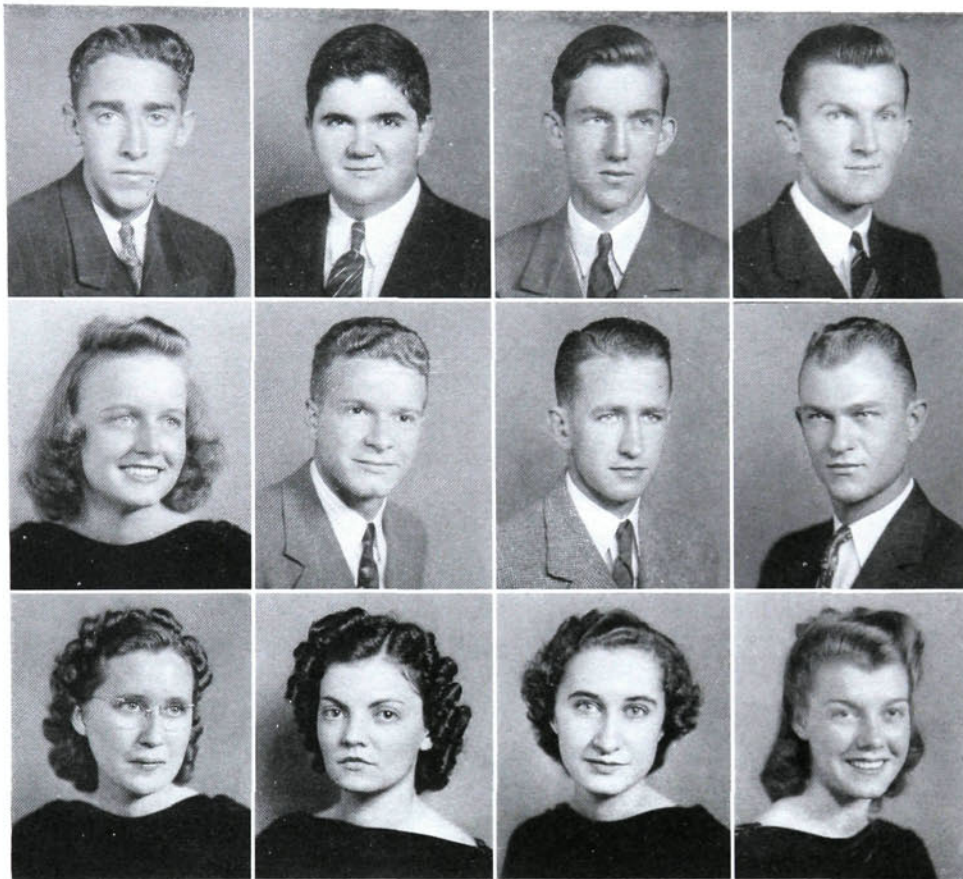
PAUL HENRY BLAIR
HIGH POINT, N. C.

GERTRUDE BINGHAM
UNION GROVE, N. C.

WINIFRED BURTON
HIGH POINT, N. C.

WINIFRED BRYAN
HICKORY, N. C.





MANLEY BYERLY
LEXINGTON, N. C.

LAWRENCE BYRUM
HIGH POINT, N. C.

BRUCE CARRAWAY
HIGH POINT, N. C.

ELMER CASHATT
TRINITY, N. C.

ALICE CHANDLER
HIGH POINT, N. C.

ROBERT CLIFTON
HIGH POINT, N. C.

SAM COBLE
HIGH POINT, N. C.

CHARLES COCHRANE
STAR, N. C.

LUCILLE CRAVEN
HIGH POINT, N. C.

EDITH CRIBBS
HIGH POINT, N. C.

MARY SNOW CRIDLEBAUGH
HIGH POINT, N. C.

HELEN CROWDER
HIGH POINT, N. C.

J U N I O R C L A S S

JUNIOR CLASS

PAUL DEATON
SHANNON, N. C.

ALBERT EARLE
MT. LAKE, N. J.

GARLAND ELLIS
CARY, N. C.

CATHERINE ELLISON
HIGH POINT, N. C.

LOUISE ELLISON
HIGH POINT, N. C.

DELBERT EVERHART
THOMASVILLE, N. C.

JOHN FARLOW
SOPHIA, N. C.

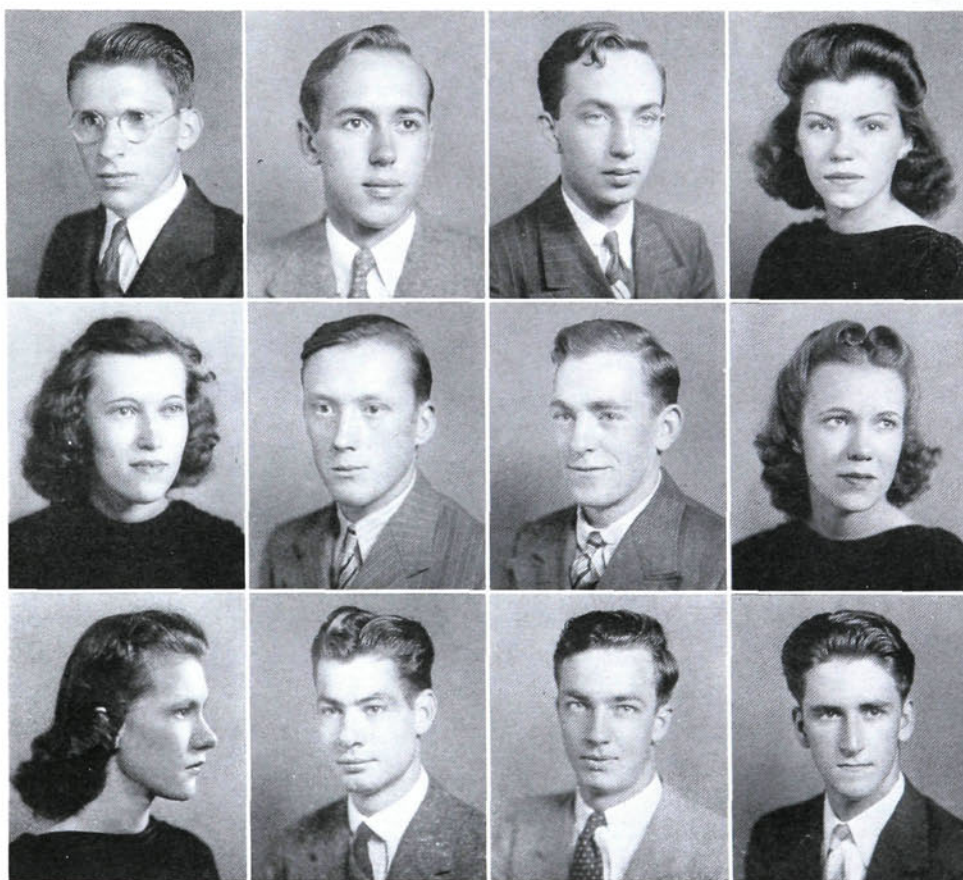
JESSIE FRAZIER
HIGH POINT, N. C.

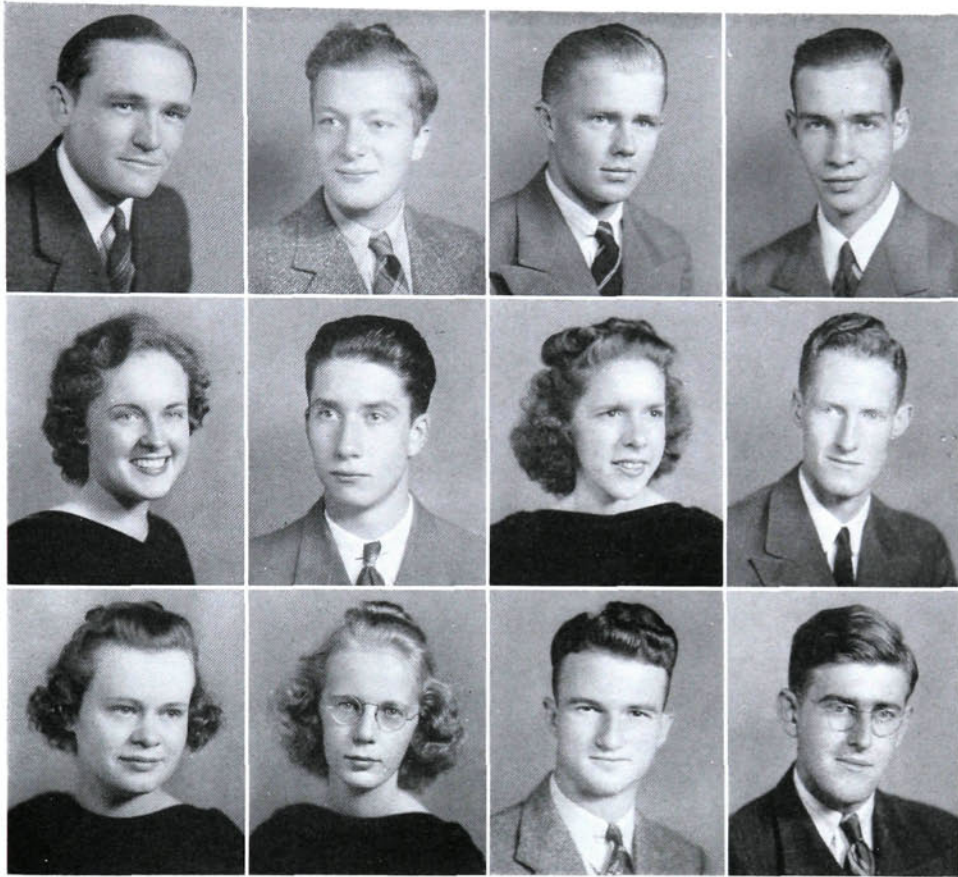
MARY TAYLOR GAY
MARGARETTESVILLE, N. C.

HOWARD GARMON
HIGH POINT, N. C.

ADAM LEE GIBSON
HIGH POINT, N. C.

HORACE GILES
HIGH POINT, N. C.





MARSE GRANT
HIGH POINT, N. C.

VICTOR HARBER
WEEHAWKEN, N. J.

BENTLEY FOY HEGE
LEXINGTON, N. C.

ROBERT HOLLOWAY
MONROE, N. C.

DORIS HOLMES
GRAHAM, N. C.

HENRY HUBBLE
NORTH HALSTON, VA.

LUCILLE JOHNSON
WINSTON-SALEM, N. C.

BILL KEENE
RICH SQUARE, N. C.

PAULINE KENNETT
HIGH POINT, N. C.

NELLIE KITTRELL
HENDERSON, N. C.

BURKE KOONTZ
HIGH POINT, N. C.

JACK LEE
HIGH POINT, N. C.

J U N I O R C L A S S

J U N I O R C L A S S

MARCEL MALFREGEOT
CLARKSBURG, W. VA.

JOE MAY
THOMASVILLE, N. C.

RUTH MURPHY
THOMASVILLE, N. C.

FRANK MURRAY
GIBSONVILLE, N. C.

LOUIS NIGRO
LONG ISLAND, N. Y.

SARA OWEN
TROY, N. C.

JACK MORAN
FREEPORT, N. Y.

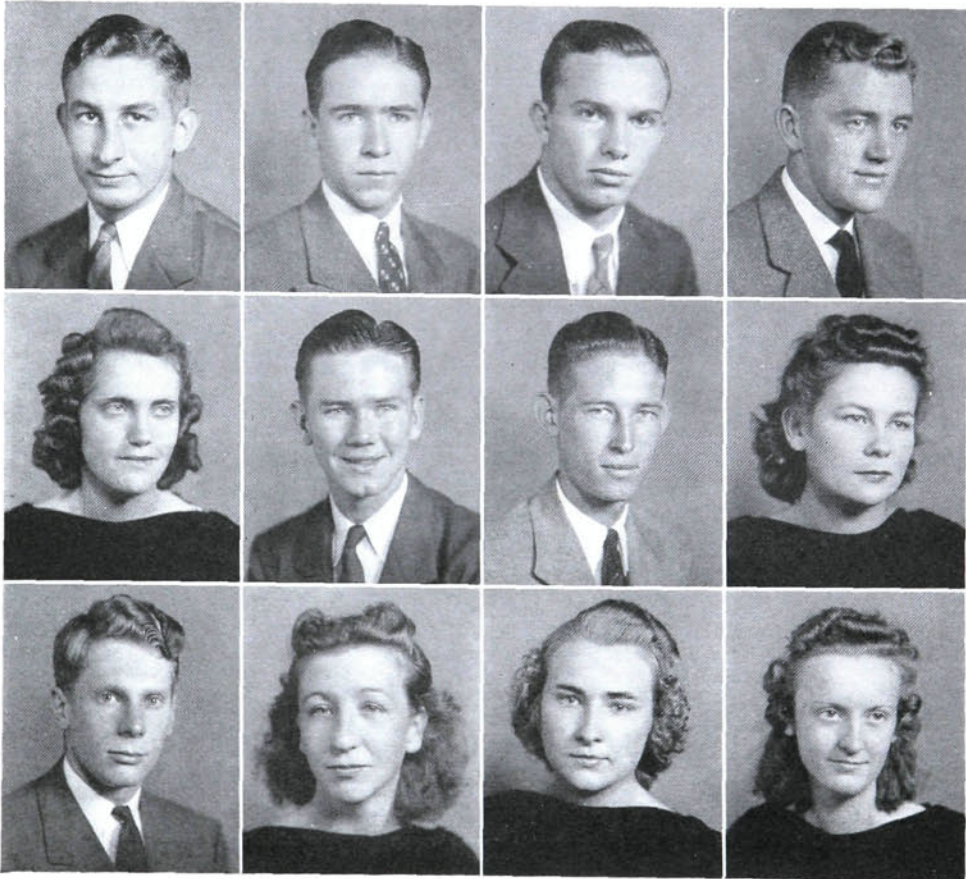
JAMES MOORE
TROUTVILLE, VA.

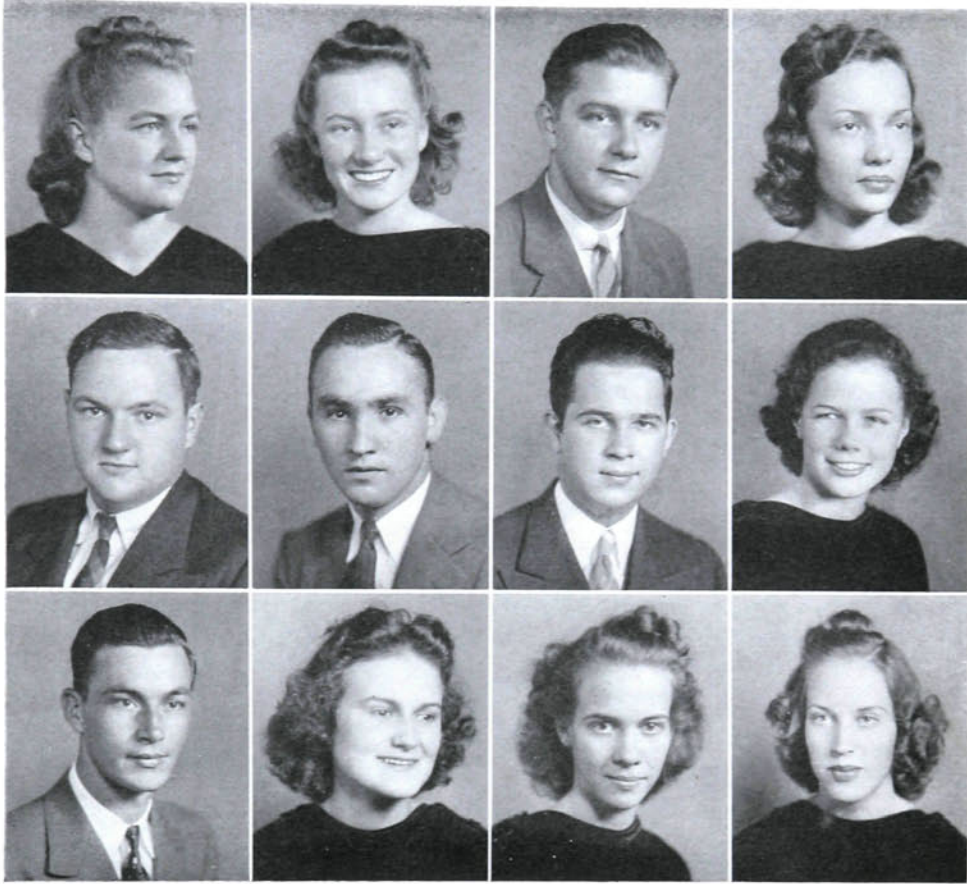
BYRDELLE NICHOLAS
SALLIS, MISS.

GEORGE NEEDHAM
GREENSBORO, N. C.

DOROTHY PEGRAM
GREENSBORO, N. C.

CELESTE PAYNE
HIGH POINT, N. C.





CLEO PINNIX
GREENSBORO, N. C.

JEANNE RANKIN
HIGH POINT, N. C.

WORTH ROYAL
TRINITY, N. C.

BETTY SECHREST
HIGH POINT, N. C.

ROBERT SICELOFF
HIGH POINT, N. C.

COBLE SHOFFNER
GIBSONVILLE, N. C.

ROBERT SNIDER
HIGH POINT, N. C.

RACHEL SPAINHOUR
WINSTON-SALEM, N. C.

WILLIS TARVER
GRAYSON, LA.

CLEO TEMPLETON
HARMONY, N. C.

LUCY NEAL THAYER
TRINITY, N. C.

CARMEN VERNON
MT. HOLLY, N. C.

J U N I O R C L A S S

J U N I O R C L A S S

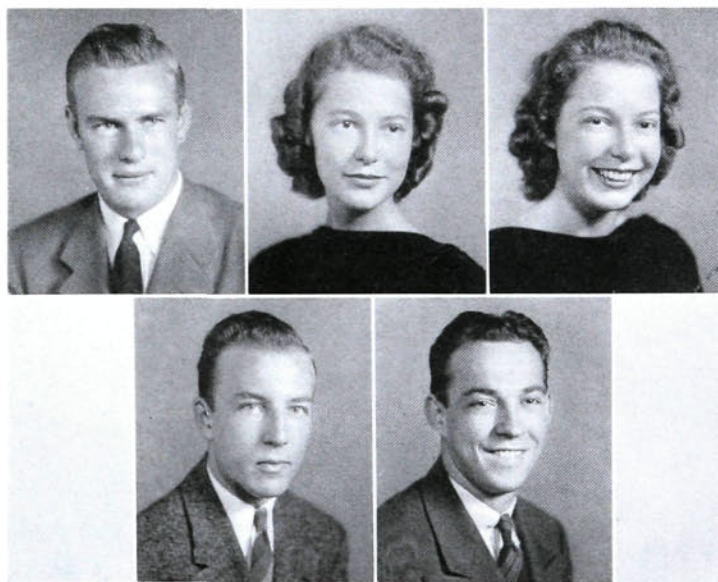
C. A. WATTS, JR.
WINSTON-SALEM, N. C.

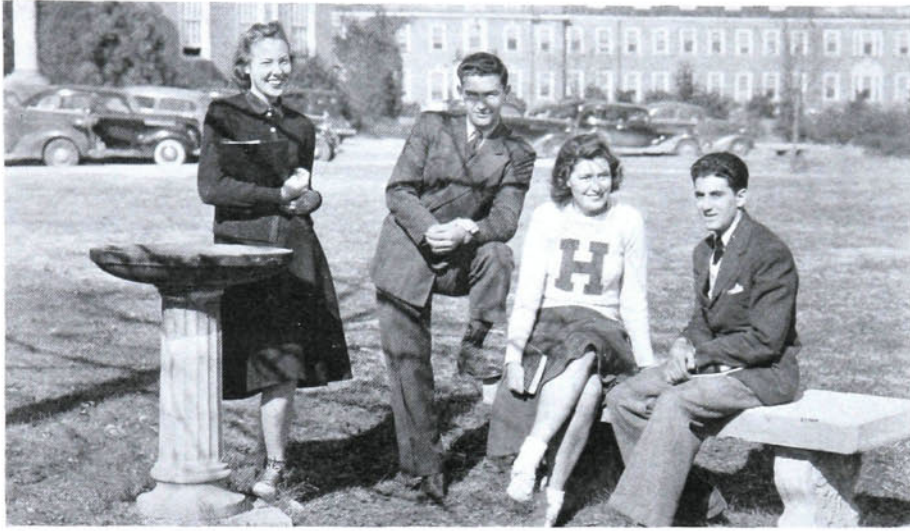
EMMA WHITAKER
ENFIELD, N. C.

LILLY WHITAKER
ENFIELD, N. C.

BOYCE WYNN
SPINDALE, N. C.

FRANK YOUNG
HIGH POINT, N. C.





Hunt, Lewis, Bivens, Merhige.

OFFICERS

BOB MERHIGE	<i>President</i>
ELVIN LEWIS	<i>Vice-President</i>
GRACE BIVENS	<i>Secretary</i>
VIRGINIA HUNT	<i>Treasurer</i>



SOPHOMORE CLASS



S O P H O M O R E C L A S S

HARRIETT BERRY

GRACE BIVENS

HOWELL CAMPBELL

ELMA CHAMBLISS

MARY RUTH CLINARD

EVELYN DAVIS

WILLIE EDWARDS

FLORENCE ELKINS

SARA LOU GERRINGER

HELEN GIBSON

RUTH GOOD

AUDREY GUTHRIE

RUTH GUYER

MURIEL HILTON

VIRGINIA HUNT

ANNE KITCHENS

CHRISTINE KISER

HILDA LANIER

JEAN MAXWELL

RUTH MAY

DOLORES MCKEOWN

CAROLYN NIFONG

IRENE PARKER

ETHELDA PETERS

RUTH PHILLIPS

GERALDINE RASH

FRANCES SCRUGGS

MARY SMITH

IRIS THACKER

JOSEPHINE TOMLINSON

MARY TOWNSEND

CHARLOTTE VARNER

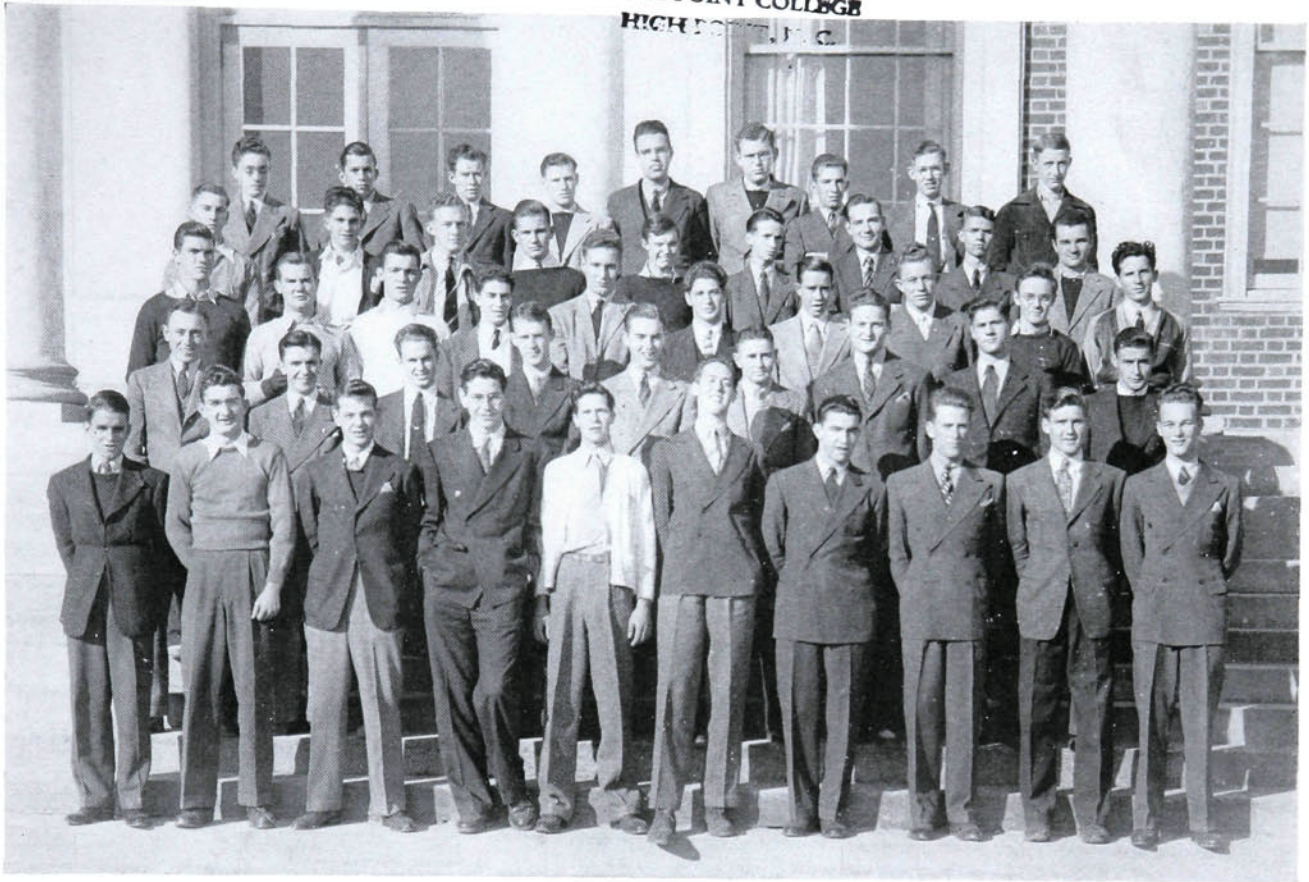
MABEL WARLICK

ELIZABETH WOOD

G I R L S



WRENN MEMORIAL LIBRARY
HIGH POINT COLLEGE
HIGH POINT, N. C.



BOYS

DARRELL ALLRED
ROBERT ANDREWS
FOY BECK
HARRY BROOKS
BEN BULLA
BANKS CHILTON
MILLARD COBLE
GEORGE CONNOR
JEROME COUNIHAN
RALPH COX
FORREST CATES
JIMMIE EDWARDS
BANKS EVANS
LEONARD FAUST
FRANK FERNANDEZ
RALPH FERREE
RUSSELL FITCH
SAMUEL FOWLER
VERNON FORNEY

WILLIAM FRAZIER
CECIL FREEMAN
BOYD GETTY
WARREN GODWIN
ED GREESON
JOHN HAMM
FRANK HARRIS
ROBERT HICKS
ROBERT HOLT
ARNOLD HUFF
RUSSELL HUGHES
LEWIS JARVIS
BRUCE JENKINS
LOYD JOHNSON
R. S. KIGER
TOMMY KINASZCZUK
WINFRED LAMAR
RALPH LANIER
ELVIN LEWIS
JIMMIE MCCALL
ROBERT MERHIGE
HERBERT MILLER

FRED MILLS
HILLIARD NANCE
MELVILLE ODOM
ROBERT OVERMAN
WILLIAM PATTERSON
MILTON PRICE
HARLAN REID
MALCOLM RILEY
CLAYTON SECHLER
JAMES SCOTTEN
JOE SHEETS
BERNARD SHUFELT
STOKES SMITH
FRANK STONE
ALBERT SUGGS
ELLIS SUTTON
BRUCE THORBURN
DAVID WEATHERLY
GEORGE WELBORN
JOHN WILLIAMS
BRANDON YORK
PAUL YOUNTS

S O P H O M O R E C L A S S



UNCLASSIFIED STUDENTS

FOY BECK
LUCY ROSELLE BROOKS
ALFRED BUCHANAN
CHARLES O. BUCHANAN
VIRGINIA BURTON
MILFORD BYERLY

LEONARD COCHRANE
HENRY FERREE
VIRGINIA FINK
JOSEPHINE GIBSON
HAZEL LASSITER
MRS. HELEN R. LINDSAY
MRS. E. F. STIREWALT

ALICE ELIZABETH STROTZ
BESSIE WHITE TESH
MARY L. TIMMONS
ELIZABETH VEST
LESLIE WARD
C. VIRGIL YOW

PIANO STUDENTS

GRACE BIVINS
OLIN BLICKENSDEFER
NELL M. HUMPHREYS

DOROTHY MANGIN
DORIS METGER
BERTHA V. MULLINIX
ZELMA PARNELL
DORIS POINDEXTER

CATHERINE RYAN
GENE THACKER
ELIZABETH YOW

VOICE STUDENTS

ALMA ANDREWS
HARRIETT BERRY
BANKS CHILTON
JESSIE FRAZIER

JAMES EMORY GIBSON
BETTY JOE HAUSER
A. A. HOUTS
ZELMA PARNELL
MRS. WM. RAGSDALE

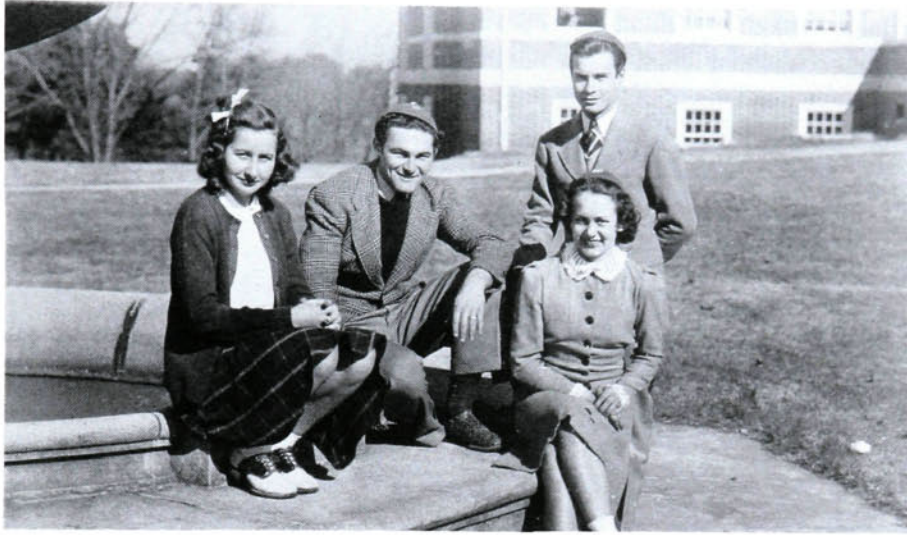
SARA SCRUGGS
EVELYN SHARPE
SAM TAYLOR
MYRTLE TITMAN

ART STUDENTS

EVELYN ATKINS
MARTHA BAITY
WINIFRED BURTON
HELEN BROWN
GERTRUDE BINGHAM
ANNABEL BINGHAM
EDITH CRIBBS
MARY S. CRIDLEBOUGH
ALICE CHANDLER
CATHERINE ELLISON
LOUISE ELLISON
JENNIE RUTH FISHER

JESSIE FRAZIER
HUGH HOWELL
CATHERINE KENNEDY
MRS. ALTA LINDLEY
MARGUERITE McCASKILL
RUTH MURPHY
MRS. S. W. MYERS
DANESE MANLEY
JEAN MAXWELL
IVA NICHOLSON
DOROTHY PEGRAM
MAE SUE PEGRAM

MILTON PRICE
RUTH PEELER
RACHEL SPAINHOUR
MRS. FERN A. SMITH
MRS. E. STIREWALT
BERNARD SHUFELT
MARY ALMA TEAGUE
ANNA TESH
HENRY TERRY
CARMEN VERNON
JULE WARREN
MRS. EMMA S. WHITE



Linville, Weiner, Rozelle, Warren.

OFFICERS

JULIUS WEINER *President*
RICHARD ROZELLE *Vice-President*
JULE WARREN *Secretary*
DOROTHY LINVILLE *Treasurer*



FRESHMAN CLASS



FRESHMAN CLASS

kathryn allen
erma andrew
mary lillian andrew
martha baity
annabel bingham
doris byerly
eloise bodenheimer
ruth cave
frances chappell
doris clinard
willie clinard
gaynell conrad
emma lee cress
geneve crowder
jean davis
josephine deal
anna lee ellisen
evelyn evans

nellie graham
ruth griffith
betsy hammer
wanda harville
mary holton
virginia jester
mildred jones
mary kathryn kennedy
arline kotler
elizabeth long
ruth laughlin
leatrice lndley
dorothy linville
may loftin
elizabeth long
helen macneal
grace mckaughn
belle moore
frances musselwhite
martha grey mickey
grace nevius
patricia ortman
ruth parker

doris poindexter
dorothy presnell
mary randolph
annie gail ridge
doris robbins
pauline roach
elizabeth russell
catherine ryan
ronda sebastian
helen scott
carol smith
estelle smith
doris spence
lucille stout
barbara strickland
mildred styers
mary alma teague
marie thayer
ruth thayer
roberta underwood
jule warren
nina whitaker
caroline york

GIRLS





BOYS

paul altier
alvin boles
john brooks
williard brown
douglas case
james caudle
clyde cecil
eugene connelly
clinton crew
john currence
lee davis
hurley davis
george demmy
martin dreyfuss
jacob duncan
james duncan
thomas elliot
ross farlow
morton flower
leroy foster
roland garmon
l. w. gerringer
leon gibson
harold green

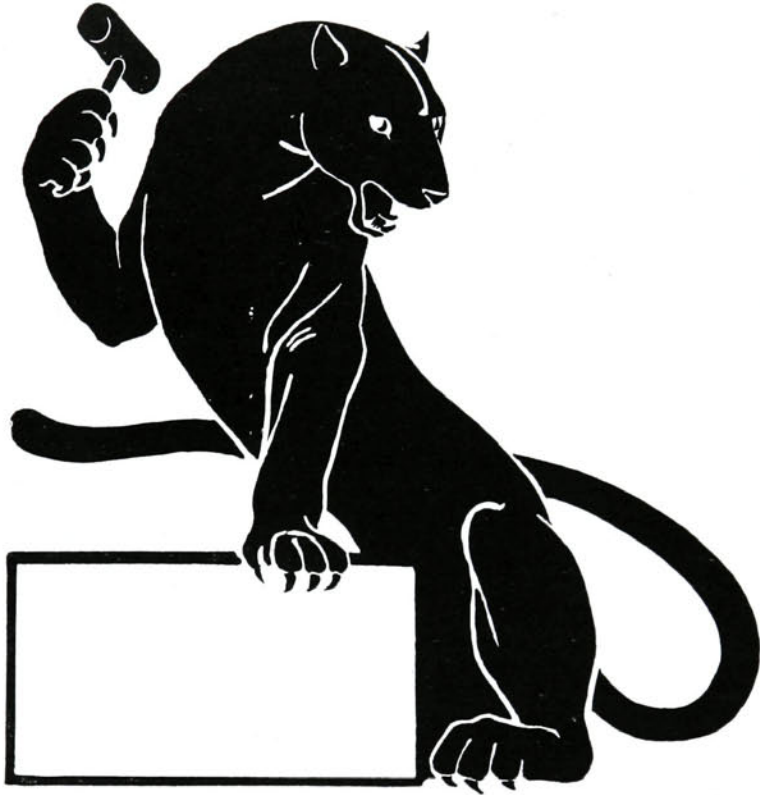
arthur griswold
james gibson
emmett hartnett
harry hauser
billy henderson
william hinkle
alvin horn
sinclair horney
william howell
arthur humphrey
bernard hurley
william hutchins
alfred houts
charles ivey
james jacobs
robert kearns
bayne keever
bruce key
william king
william langfan
bill langley
frank lambeth
franklin lawrence
alfred lea
henry lewis
lawrence linneman
morton littman

s. j. little
james lowder
william long
charles mecum
gerry messeberg
henry miner
duncan monroe
lindsay moore
albert morris
billy morris
frank morton
alfred neikind
bill nifong
dan odom
leo pappas
richard payne
joe petack
david phillips
henry pope
robert pritchard
harold reynolds
martin rosen
richard rozzelle
darrell sechrest
william setzer
theodore schumacher
julius sherman

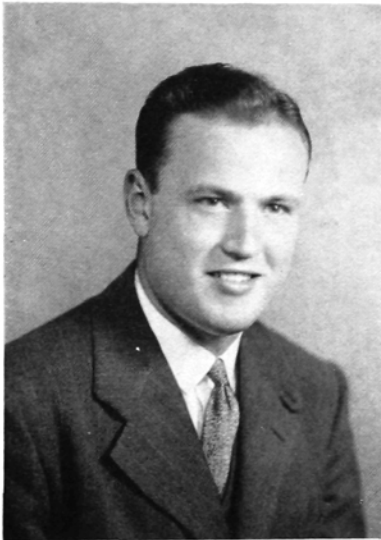
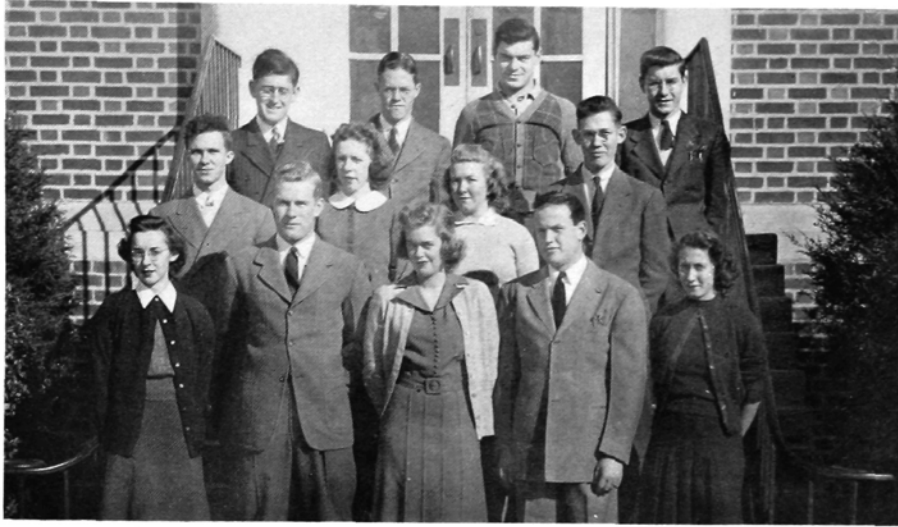
b. b. slaughter
harry sandusky
fred sloan
bernard snyder
ross spencer
francis stalmaker
william starnes
sam taylor
bob truedell
michael tynberg
henry van bylevelt
george van guilder
howard veach
spofford venerable
james walker
martin walkoff
julius weiner
bill welborn
robert williams
don wilson
robert wilson
george wood
gile wood
elliott wyne
herman wyrick
carl yow
george zuras

FRESHMAN CLASS

ORGANIZATIONS







ROBERT JOHNSON
President

To make the way for a better student-teacher relationship, to instill into the student a sense of responsibility to himself and to others, and to guide and direct social activities on campus, are the major aims of the Student Council. The Council also serves as a connecting link between the dormitory and day students having its representatives chosen from each of the two bodies. This year two additional members were added to represent the boys' and girls' day student governing bodies. Under the capable presidency of Robert Johnson, the Council sponsored most of the outstanding social functions of the school year.

STUDENT GOVERNMENT



Bivens, Templeton, Holmes, Baity, Thompson

DORMITORY GOVERNING BODIES

RUTH MERELYN THOMPSON . . . *President*
 HELEN DAVIS *Vice-President*
 CLEO TEMPLETON *Secretary*

FRANK HEGE *President*
 EDGAR WELBORN . . . *Senior Representative*
 JACK MORAN *Junior Representative*

Earle, Locke, Stalmaker, Moran, Hege, Ferree, Welborn, Counihan





Parker, Allen, Holton, Crowder, Vance

DAY STUDENT GOVERNING BODIES

NELL HOLTON *President*
 EDITH VANCE *Senior Representative*
 HELEN CROWDER *Junior Representative*

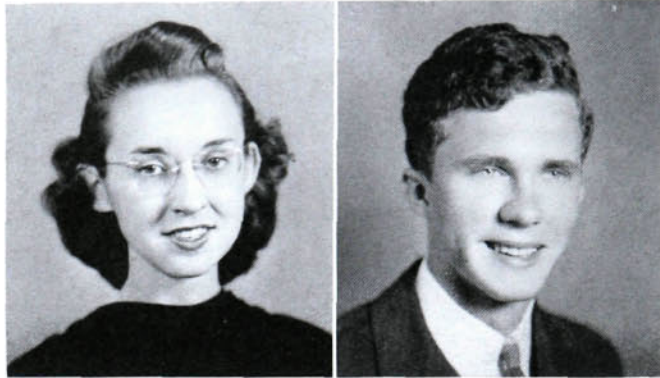
REGINALD HINSHAW *President*
 MARC LOVELACE *Senior Representative*
 ROBERT CLIFTON *Junior Representative*

Frazier, Lovelace, Hinshaw, Truesdale, Clifton,



THE ZENITH

WALLER, *Editor*
HINSHAW, *Manager*



EDITORIAL STAFF

HELEN WALLER

VEREL WARD

SIBYL FOWLER

JACK LEE

RACHEL SPAINHOUR

BUSINESS STAFF

REGINALD HINSHAW

ALBERT EARLE





EDITORIAL STAFF

IRENE PARKER
 MARSE GRANT
 MABEL KOONTZ
 SEYMOUR FRANKLIN
 BURKE KOONTZ

EMANUEL SEIFE
 FRANK MORTON
 IRIS THACKER
 JULIUS SHERMAN
 WINNIE BRYAN

VICTOR HARBER
 DOROTHY PRESNELL
 JACK HOUTS
 DORIS POINDEXTER
 LUCILLE CRAVEN

BUSINESS STAFF

LAWRENCE HOLT

JOHN HAMM

JOE SHEETS



THE
 HI-PO

BOND, *Editor*
 HAMM, *Manager*

VOICE DEPARTMENT

Direct from study at the Juillard School of Music in New York City, Miss Janet Hall, head of the Voice Department of High Point College, has effected many improvements in that department which are noteworthy. A gifted and well-known singer herself, Miss Hall has greatly aided in the upbuilding of the reputation of her department through the presentation of numerous recitals both on and off campus.

Instruction in Voice culture is open to the students working toward a B. S. degree in Public School Music or to students wishing to develop their voices through private lessons.

Perhaps no field in the college curriculum has aroused more interest at High Point than has the field of voice culture. The increasing numbers of young men and young women interested in the various courses of the department have necessitated its enlargement.



MRS. JANET RUSSELL OWENS
Choir Director



MISS JANET HALL
Voice Director

THE A CAPELLA CHOIR

The presentation of the "Messiah" and the "Elijah" required most of the time of the choir this year. The actual selection of the choir members, however, was not done until the beginning of second semester.

The college quartet composed of Banks Chilton, S. W. Taylor, Dick Rozelle, and Bernard Hurley, was given more prominence than ever before. This group sang at many programs during the year, both on and off campus.

The choir gave numerous presentations, but took no long trips as is the usual custom. It was most outstanding during the commencement programs where it has become a fixed part of the graduation exercises.

The achievements of Mrs. Janet Russell Owens, head of the Music Department, and director of the choir, this year are certainly worthy of praise. Her continuous training of both the choir and the quartet accounted for the great improvements of both groups.



First Soprano

MARTHA BAITY	LOUISE ELLISON	ANNA TESH	LILLY WHITAKER
MARY S. CRIDLEBAUGH	ZELMA PARNELL	CHARLOTTE VARNER	

Second Soprano

EVELYN ATKINS	HARRIET BERRY	JESSIE FRAZIER	RUTH PHILLIPS
		HELEN SCOTT	

First Alto

AUDREY GUTHRIE	NELL HOLTON	JEAN MAXWELL	NINA WHITAKER
----------------	-------------	--------------	---------------

Second Alto

DORIS POINDEXTER	EDITH VANCE	EMMA WHITAKER
------------------	-------------	---------------

First Tenor

BANKS CHILTON	LAWRENCE BYRUM	S. W. TAYLOR, JR.
---------------	----------------	-------------------

Second Tenor

TOMMY KINASYCZUK	WADE KOONTZ	BAXTER SLAUGHTER
------------------	-------------	------------------

First Bass

L. W. GERRINGER	WARREN GODWIN	JOE MAY	DICK ROZELLE
		ELLIOTT WYNNE	

Second Bass

OLIN BLICKENSERFER	JACK HOUTS	BERNARD HURLEY	CHARLES MECUM
		FRANCIS STALMAKER	

A C A P E L L A C H O I R

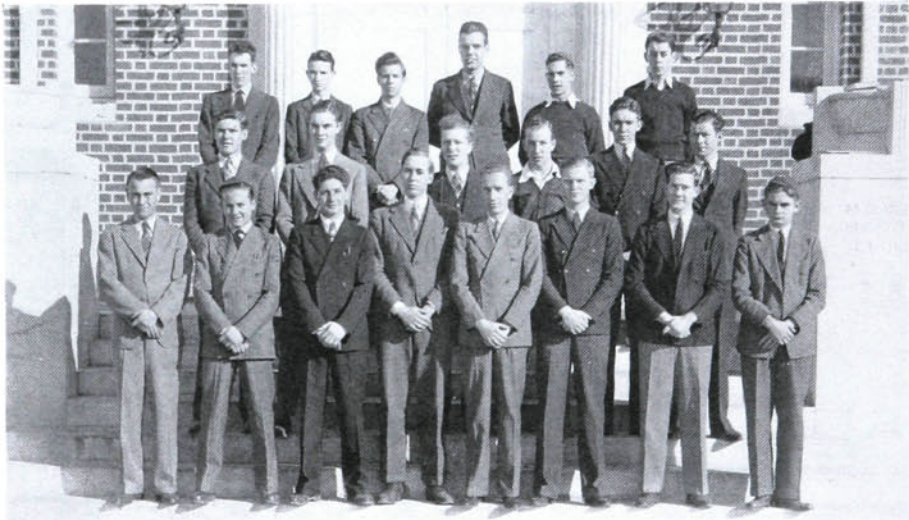
THALEAN LITERARY SOCIETY

OFFICERS

BEVERLY BOND *President*
ALBERT EARLE *Vice-President*
P. H. SCARBORO *Secretary*
MORTON FLOWER *Treasurer*

ROLL

BILL RENNIE	JACOB DUNCAN	BOYCE WYNN
MARC LOVELACE	BILLY LOCKE	CHARLES MECUM
BOB JOHNSON	BANKS CHILTON	JOE MAY
BERNARD SHUFELT	OLIN BLICKENSERFER	VICTOR HARBER
	TOMMY KINASCYKUK	
	JOHN WILLIAMS	
	BILLY HENDERSON	
	HENRY MINER	
	ROSS SPENCER	
	BEN BULLA	





OFFICERS

MARGUERITE McCASKILL *President*
 CLEO TEMPLETON *Vice-President*
 GERALDINE RASH *Secretary*

ROLL

ERMA ANDREWS	AUDREY GUTHRIE	ALICE OVERMAN
MARY ANDREWS	MATTIE RUTH GUYER	CELESTE PAYNE
EVELYN ATKINS	DORIS HOLMES	RUTH PARKER
ANNABEL BINGHAM	LILLY HOPKINS	ETHELDA PETERS
HELEN BROWN	VIRGINIA HUNT	DOROTHY PRESNELL
WINIFRED BURTON	VIRGINIA JESTER	GERALDINE RASH
DORIS BYERLY	LUCILLE JOHNSON	HELEN SCOTT
RUTH CAVE	NELLIE KITRELL	MARGARET SINK
JEWEL CAMPBELL	ELIZABETH KIVETT	CAROL SMITH
ELMA CHAMBLISS	MABEL KOONTZ	ESTELLE SMITH
MARY RUTH CLINARD	ARLENE KOTLER	DORIS SPENCE
DORIS CLINARD	BETTY LANG	MILDRED STYERS
WILLIE CLINARD	RUTH LAUGHLIN	RACHEL SPAINHOUR
ADELAIDE CONNOR	LEATRICE LINDLEY	CLEO TEMPLETON
LUCILLE CRAVEN	DOROTHY LINVILLE	LUCY NEAL THAYER
EVELYN DAVIS	ERLINE LOFTIN	MARIE THAYER
JOSEPHINE DEAL	HILDA MARTIN	RUTH THAYER
LOUISE ELLISON	DOLORES McKEOWN	MARY TOWNSEND
EVELYN EVANS	MARGUERITE McCASKILL	MARY ALMA TEAGUE
VESTAL FERGUSON	HELEN MACNEAL	ANNA TESH
SIBYL FOWLER	RUTH MEYERS	ROBERTA UNDERWOOD
RUTH FUTRELLE	MARTHA GRAY MICKEY	CHARLOTTE VARNER
MARY TAYLOR GAY	ESTHER MIRAN	HELEN WALLER
SARAH LOU GERRINGER	NELLIE MOORE	VEREL WARD
HELEN GIBSON	BELLE MOORE	JULE WARREN
NELLIS GRAHAM	ELEANOR MUSSELWHITE	JOAN WILLIAMS
MILDRED GRANT	GRACE NEVIUS	ELIZABETH WOOD
	BYRDELLE NICHOLAS	

NIKANTHAN LITERARY SOCIETY

ARTEMESIAN LITERARY SOCIETY

OFFICERS

EDITH VANCE *President*
 BETTY SECHREST *Vice-President*
 IRENE PARKER *Secretary*

ROLL

JANE AUSTIN
 MARTHA BAITY
 HARRIET BERRY
 GERTRUDE BINGHAM
 GRACE BIVENS
 WINNIE BRYAN
 ALICE CHANDLER
 ANNE CHAPPELL
 FRANCES CHAPPELL
 REBECCA COBLE
 LOUISE COLE
 MARY SNOW CRIDLEBAUGH
 GENEVA CROWDER
 HELEN CROWDER
 HELEN DAVIS
 WILLIE EDWARDS
 FLORENCE ELKINS
 ANNA LEE ELLISON
 CATHERINE ELLISON
 JENNIE RUTH FISHER
 JESSIE FRAZIER

RUTH GOOD
 RUTH GRIFFITH
 BETSY NEIL HAMMER
 WANDA HARVILLE
 RUTH HEPLER
 MARY HOLTON
 NELL HOLTON
 MILDRED JONES
 PAULINE KENNETT
 CHRISTINE KISER
 ANNE KITCHENS
 ELIZABETH LONG
 DANEASE MANLEY
 RUTH MAY
 JEAN MAXWELL
 DORIS METGER
 GRACE MCKAUGHAN
 IVA NICHOLSON
 PATRICIA ORTMAN
 SARA OWEN
 IRENE PARKER

ZELMA PARNELL
 RUTH PEELER
 RUTH PHILLIPS
 CLEO PINNIX
 DORIS POINDEXTER
 JEANNE RANKIN
 MARY RANDOLPH
 ANNIE GAIL RIDGE
 DORIS ROBBINS
 BETTY RUSSELL
 CATHERINE RYAN
 BETTY SECHREST
 MARY SMITH
 LUCILLE STOUT
 BARBARA STRICKLAND
 IRIS THACKER
 RUTH M. THOMPSON
 JODY TOMLINSON
 EDITH VANCE
 CARMEN VERNON
 CAROLINE YORK





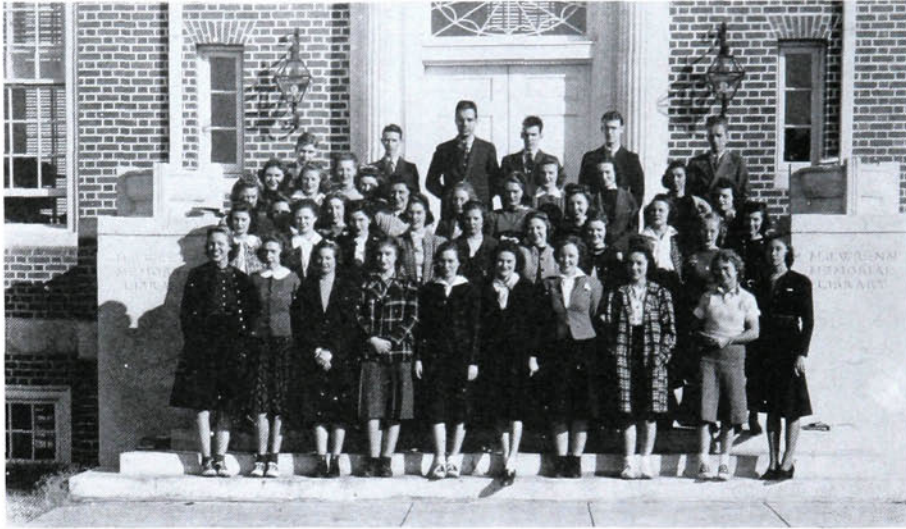
OFFICERS

LEROY SPENCER *Speaker*
 ALBERT EARLE *First Assistant Speaker*
 IRENE PARKER *Recording Secretary*

ROLL

FORRESTER AUMAN	DOROTHY LINVILLE	JULIUS SHERMAN
LESTER BALLARD	JACK HOUTS	CHARLES SHARPE
WILLIARD BROWN	BILL HOWELL	RONDA SEBASTAIN
HARRY BROOKS	VIRGINIA HUNT	IRIS THACKER
WINIFRED BURTON	BERNARD HURLEY	BERNARD SHUFELT
WINIFRED BRYAN	ROBERT JOHNSON	JODY TOMLINSON
MARTHA BAITY	MILDRED JONES	JULE WARREN
CLINTON CREW	MARTHA MICKEY	CAROLINE YORK
ELMA CHAMBLISS	DOLORES MCKEOWN	FRANK YOUNG
JACK CAUDLE	FRANK MORTON	CHARLES MECUM
MARTIN DREYFUSS	DUNCAN MONROE	RUTH PEELER
JACOB DUNCAN	BYRDELLE NICHOLAS	WILLIAM LANGFAN
RALPH FERREE	ZELMA PARNELL	MICHAEL TYNBERG
RUTH FUTRELLE	DORIS POINDEXTER	NELLIE KITTRELL
EVELYN DAVIS	BILL PATTERSON	REGINALD HINSHAW
MILDRED GRANT	LEO PAPPAS	MABEL WARLICK
L. W. GERRINGER	DAVID PHILLIPS	GENEVA CROWDER
WARREN GODWIN	RUTH PHILLIPS	HILDA MARTIN
VICTOR HARBER	LUCILLE STOUT	BETSY HAMMER
BILL HENDERSON	MARY SMITH	DARRELL SECHREST
MARY HOLTON	BAXTER SLAUGHTER	HARLAN REID
ARLENE KOTLER	CAROL SMITH	CARMEN VERNON

INTERNATIONAL RELATIONS CLUB

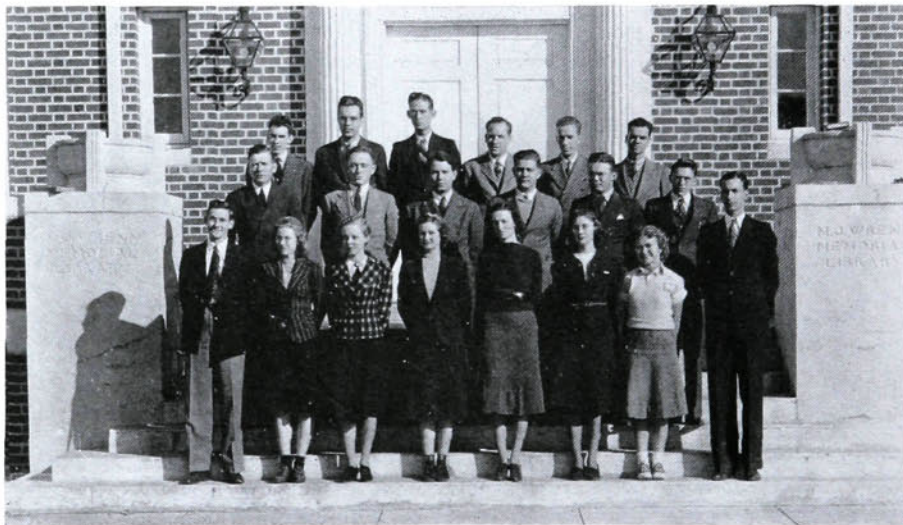


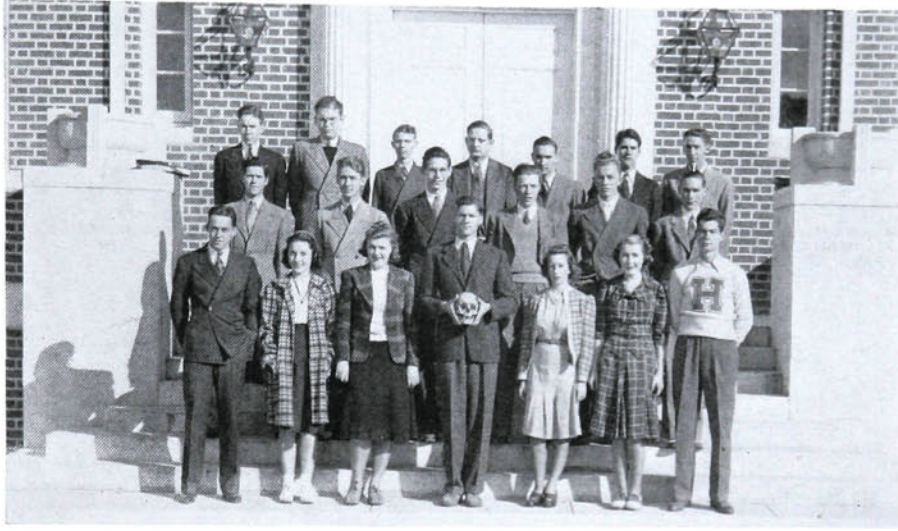
CHRISTIAN ENDEAVOR SOCIETY

DORIS HOLMES	<i>President</i>
CLEO TEMPLETON	<i>Vice-President</i>
LUCILLE CRAVEN	<i>Secretary</i>

MINISTERIAL ASSOCIATION

MARC LOVELACE	<i>President</i>
JOHN CAGLE	<i>Vice-President</i>
ANNA TESH	<i>Secretary</i>



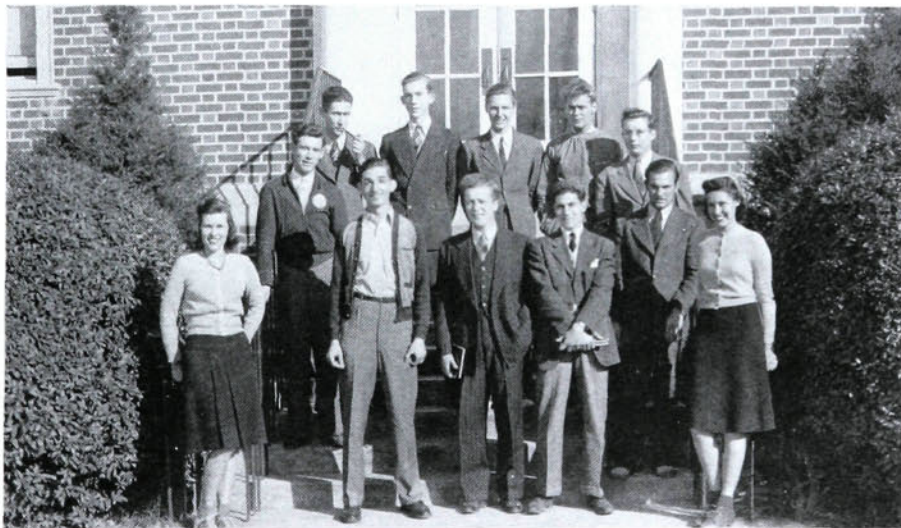


MEDICAL CLUB

ROBERT HOLT *President*
 SARA OWEN *Vice-President*
 MARGARET BAIRD *Secretary*

LAW CLUB

VICTOR HARBER *President*
 ROBERT MERHIGE *Vice-President*
 WILLIAM LANGFAN *Secretary*



T H E B A N D

OLIN BLICKENSBERGER *Conductor*
 RUSSELL HUGHES *Drum Major*
 EMMA WHITAKER and LILLIE WHITAKER "*Twin Twirlers*"

Clarinets

MARC LOVELACE
 JACK CAUDLE
 WILLIAM STARNES
 HENRY TERRY
 JAMES SCOTTEN
 BETSY HAMMER

Alto Saxophones

RUSSELL HUGHES
 JAMES MCCALL
 PERCY HOLLAND
 ALICE OVERMAN

Euphonium

ROBERT OVERMAN

Bass

WILLIAM HORN
 M. T. HICKS

Horns

JOE SHEETS
 ROBERT ANDREWS
 BERNARD HURLEY
 WARREN GODWIN

Bass Drum

SAM TAYLOR

Cornets

EUGENE CONNELLY
 FRANCIS STALMAKER
 BAXTER SLAUGHTER
 LEROY FOSTER
 LAWRENCE CARTER
 JOHN WILLIAMS
 CECIL FREEMAN

Snare Drums

VERNON FORNEY
 ROBERT WILLIAMS
 WILLIAM PATTERSON

Flute

MILDRED JONES

Cymbals

BILL RENNIE

Piccolo

EDITH VANCE

Glockenspiel

HELEN SCOTT





Lovelace, Vance, Gray, Hunt

FORENSIC COUNCIL



INTERCOLLEGIATE DEBATERS

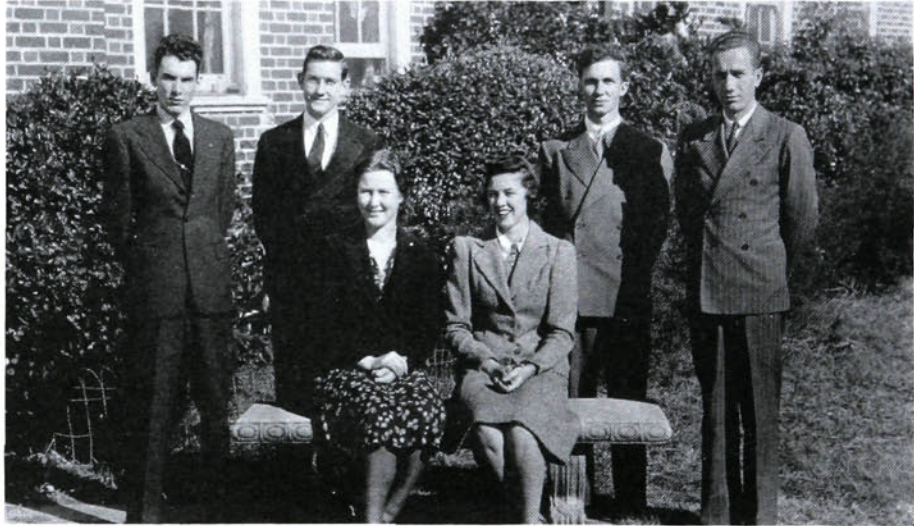


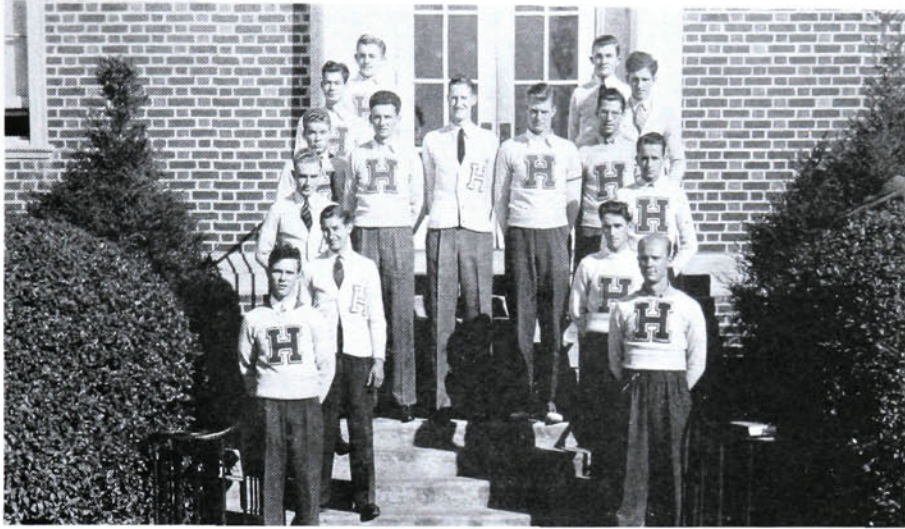
Koontz, Lovelace, Johnson, Hinshaw, Rennie
Lee, McCaskill, Holmes, Templeton, Waller, Bond

THE LIGHTED LAMP

WHO'S WHO

Rennie, Lovelace, Hinshaw, Bond
McCaskill, Miran





BLOCK "H" CLUB

CHEERLEADERS

Bivens, Crowder, Elkins
Kinaszczuk, Stone



MODERN PRISCILLA CLUB

OFFICERS

REBECCA COBLE *President*
LUCY NEAL THAYER *Vice-President*
CLEO PINNIX *Secretary*
VESTAL FERGUSON *Treasurer*

ROLL

BANKS APPLE
MARTHA BAITY
ANNABEL GINGHAM

REBECCA COBLE
CLEO PINNIX
VESTAL FERGUSON
ADELAIDE CONNOR
ETHELDA PETERS
IVA NICHOLSON
RUTH FUTRELLE
RUTH M. THOMPSON
ESTHER MIRAN
LUCILLE JOHNSON
VIRGINIA HUNT
CHRISTINE KISER
FRANCES SCRUGGS
LUCY NEAL THAYER
NELL MOORE
JULE WARREN

BETTY RUSSELL
JOAN WILLIAMS
MRS. W. H. FORD





HOME MANAGEMENT HOUSE

An increased number of Home Economics majors necessitated two "practice house sessions" this year. All girls who are candidates for a B. S. degree in Home Economics are required to live in the home management house for six weeks during their Senior year. Being near the campus, its location is ideal for the young women who must attend classes on campus.

Mrs. W. H. Ford, head of this department, supervises the girls in their management of the house. It is here that they apply all the principles which they have studied during their previous years of training by putting these principles to their practical uses. Child care, cooking, home budgeting, and home management in general are the important items studied at the home management house.



MRS. W. H. FORD



THE FOOTLIGHTERS

MORTON FLOWER *President*
 WINNIE BRYAN *Vice-President*
 EVELYN ATKINS *Recording Secretary*

ENGINEERS CLUB

HENRY H. HUBBLE *President*
 LARRY W. CARTER *Vice-President*
 WINFRED LAMAR *Secretary*





Owens, Lee, Adams, Hinshaw, Miran, Blickensderfer
Elkins, Kivett, White, Holton, Allred

OFFICERS

GEORGE ELKINS *President*
 OLIN BLICKENSDERFER *Vice-President*
 ELIZABETH KIVETT *Secretary*

REPRESENTATIVES

<i>Alpha Theta Psi</i>	<i>Sigma Alpha Phi</i>	<i>Delta Alpha Epsilon</i>
MRS. ALICE PAIGE WHITE ELIZABETH KIVETT	MRS. C. B. OWENS ESTHER MIRAN	PROF. J. H. ALLRED OLIN BLICKENSDERFER
<i>Theta Phi</i>	<i>Epsilon Eta Phi</i>	<i>Iota Tau Kappa</i>
MISS LOUISE ADAMS NELL HOLTON	Prof. J. H. MOURANE GEORGE ELKINS	PROF. PAUL OWEN JACK D. LEE

DR. C. R. HINSHAW, *Permanent Chairman*

This year, in a reorganized form, the Pan-Hellenic Council has adopted a number of rules and regulations which, it is believed, will lead to better relationships between the faculty, the student body as a whole, and the social clubs themselves. The Council is composed of a faculty adviser and a student representative from each of the six Greek letter organizations on the campus in addition to the new permanent chairman, Dr. Hinshaw. The group is quite active and well fulfills its duties by assuming active control over all the activities and relationships of the fraternities and sororities.

PAN - HELLENIC COUNCIL

S I G M A A L P H A P H I

ROLL

ESTHER MIRAN
REBECCA COBLE
HELEN WALLER
VEREL WARD
BANKS APPLE
SIBYL FOWLER

LOUISE COLE
LUCILLE JOHNSON
RACHEL SPAINHOUR
BETTY SECHREST
JANE AUSTIN
VIRGINIA HUNT

CLEO TEMPLETON
ALICE CHANDLER
SARA LOU GERRINGER



HONORARY MEMBERS

MRS. C. B. OWENS
MISS VERA IDOL

MRS. P. E. LINDLEY
MISS JANET HALL

MISS HARRIET KILLOUGH





ROLL

SEYMOUR FRANKLIN
 JACK MORAN
 REGINALD HINSHAW
 MARSE GRANT
 JACK LEE
 BURKE KOONTZ
 MARC LOVELACE
 ROBERT CLIFTON

ELMER CASHATT
 ALBERT EARLE
 HORACE GILES
 JERRY COUNIHAN
 ROBERT MERHIGE
 WILLIAM LOCKE
 P. H. SCARBORO
 BOYCE WYNN

HONORARY MEMBERS

DR. P. S. KENNETT
 DR. P. E. LINDLEY

DR. C. R. HINSHAW
 PROF. A. C. LOVELACE, SR.

O. A. KIRKMAN

I O T A T A U K A P P A

T H E T A P H I

ROLL

NELL HOLTON
CATHERINE ELLISON
EDITH VANCE
RUTH M. THOMPSON
JEANNE RANKIN

HELEN CROWDER
PAULINE KENNETT
LILLY WHITAKER
EMMA WHITAKER
HARRIETT BERRY

GRACE BIVENS



HONORARY MEMBERS

MISS LOUISE ADAMS
MRS. GLENN MUSE

MRS. N. P. YARBOROUGH
MRS. N. M. HARRISON

MRS. C. V. YOW





ROLL

ARCHIE WILLIAMS	JOE GRAY
GEORGE ELKINS	HUGH HAMPTON
EDGAR WELBORN	TOMMY KINASCYKUK
C. A. WATTS	FRED MILLS
FRANK HEGE	FRANK FERNANDEZ
BUERON GARLINGTON	ROBERT SNIDER
CHARLES COCHRANE	ELMER YOUNG
BEVERLY BOND	WILLIAM FRAZIER
	FRANK HARTMAN



HONORARY MEMBERS

EDGAR HARTLEY	J. H. MOURANE
W. F. BAILEY	N. P. YARBOROUGH
DAVID T. YOW	DR. B. H. HILL
	WADE E. MARLETTE

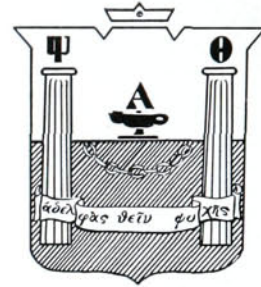
E P S I L O N E T A P H I

ALPHA THETA PSI

ROLL

ELIZABETH KIVETT
DANEASE MANLEY
JOSEPHINE WEANT
LUCY NEAL THAYER
RUTH GOOD
RUTH HEPLER

RUTH MAY
IRENE PARKER
WILLIE EDWARDS
ANNE KITCHENS
ALICE JONES
HILDRETH GABRIEL



HONORARY MEMBERS

MRS. ALICE PAIGE WHITE MRS. S. O. PEEBLES
MRS. M. W. NASH MRS. G. I. HUMPHREYS
MRS. C. R. HINSHAW





ROLL

ROBERT JOHNSON	GEORGE WELBORN
HENRY TERRY	DARRELL ALLRED
OLIN BLICKENSERFER	BOB OVERMAN



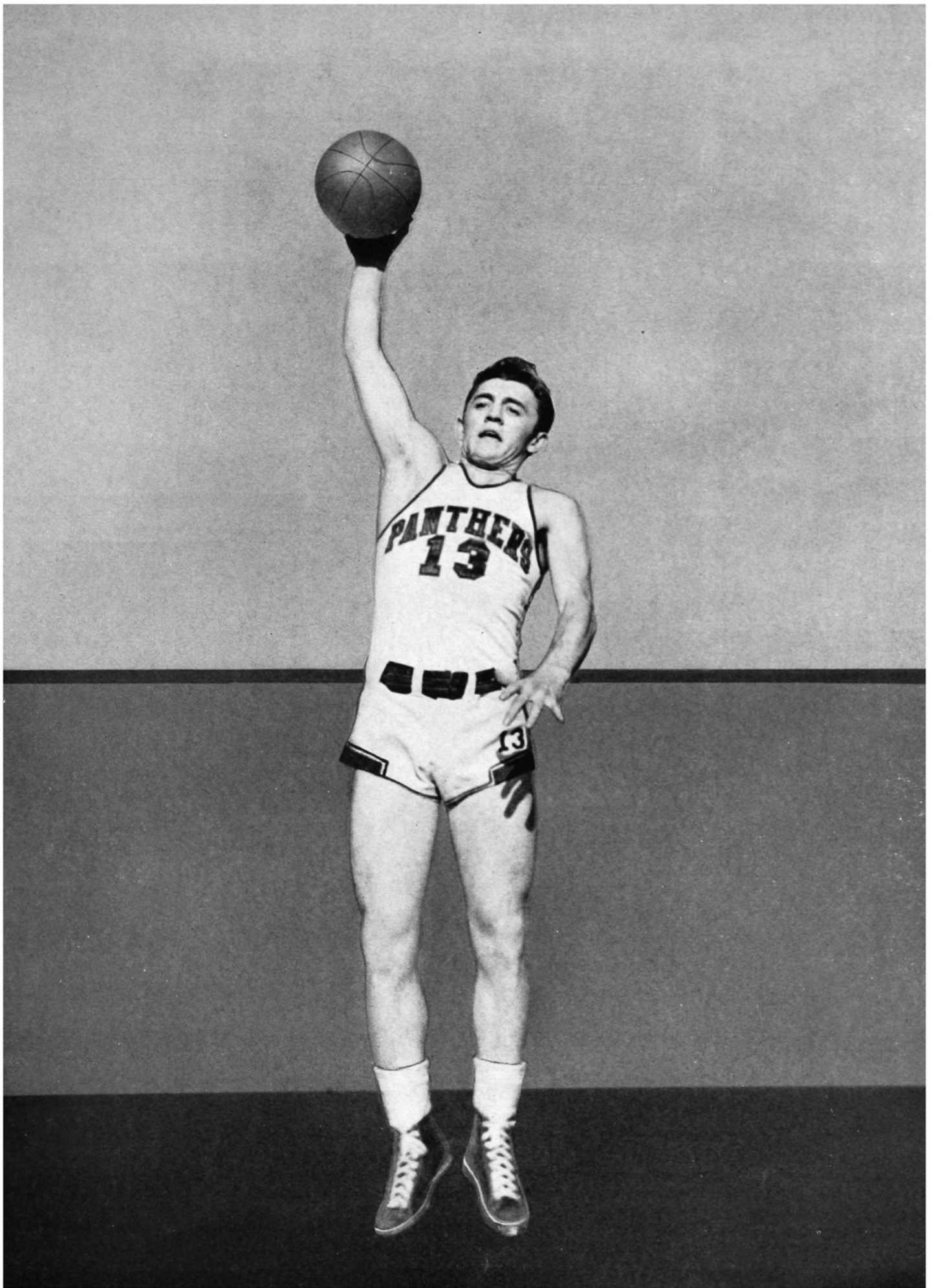
HONORARY MEMBERS

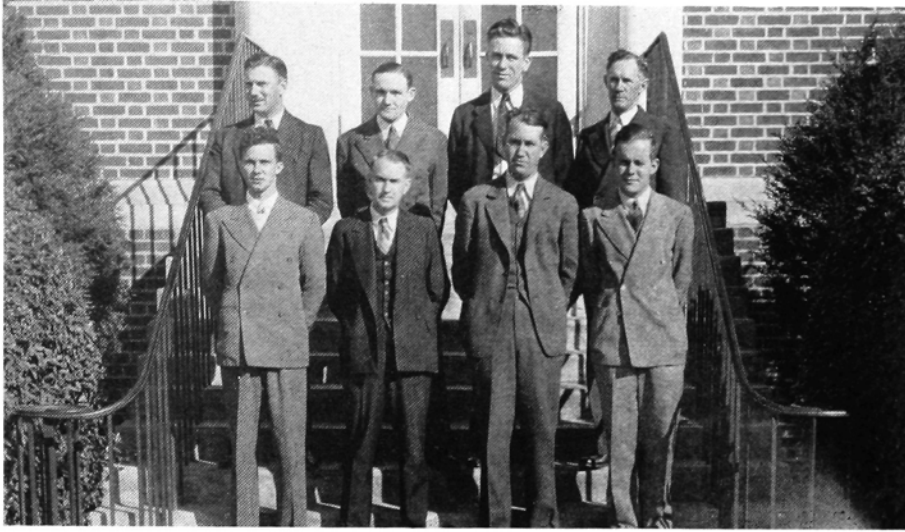
DR. GLENN PERRY	C. C. ROBBINS
DR. PAUL R. BOWEN	HERMAN SMITH
PROF. W. H. FORD	JOHN WHITSELL
PROF. J. H. ALLRED	DR. R. B. DAVIS
DR. W. L. JACKSON	

DELTA ALPHA EPSILON

ATHLETICS







Yarborough, Grant, Yow, Hinshaw,
Hinshaw, Allred, Glasgow, Austin



C. VIRGIL YOW
Head Coach



E. C. GLASGOW
Assistant Coach

ATHLETIC ASSOCIATION

The Athletic Association controls all the athletic interests of High Point College. It is composed of several faculty members along with two members of the student body. Under the leadership of its chairman, Dr. C. R. Hinshaw, the group schedules all intercollegiate contests, supervises ticket sales, and makes preparations for trips which the athletic teams take. One of the more recent noteworthy accomplishments of the Association was the sponsoring of the addition of new seats in Harrison gymnasium. Perhaps the most important duty of this group is the supervision of the regular physical education classes which all physically fit young men are required to take.

AGILE PANTHERS ON PARADE



First Row

CAPTAIN FRANKLIN	End
CASE	Back
JOHNSON	Tackle
FORNEY	Guard
BENNETT	Center
FERNANDEZ	Guard

Second Row

ALTIER	Center
GRISWOLD	Back
COCHRANE	Back
BOLES	Guard
PETACK	Back
TARVER	Tackle

Third Row

CLIFTON	Back
MOORE	Back
ZURAS	Back
WATTS	End
DEMMY	End
LEWIS	Back

REVIEW OF PANTHER FOOTBALL SEASON

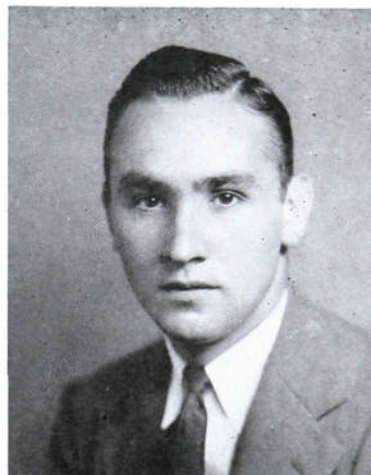
Despite numerous injuries which cropped up throughout the playing season, the 1939 Purple Panther gridgers came through a rough ten-game schedule with a record of four wins and six losses.

At various times during the year Mickey Cochrane, Frankie Fernandez, C. A. Watts, Paul Altier, and Willis Tarver were on the sidelines with injuries, but the Panthers fought against the odds in a gallant manner.

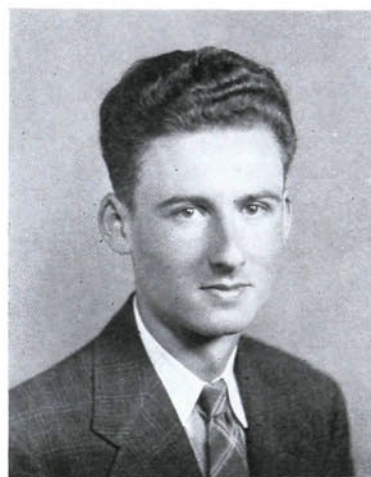
It was in conference competition that the Panthers tasted defeat most bitterly. In the opener with Elon, the Christians were victors 19-0. On succeeding week-ends Lenoir-Rhyne and Catawba trounced the Panthers respectively by 32-7 and 31-13 scores. In the Catawba game, the Panthers provided the thrills even though they were on the losing end of the score. Henry Lewis intercepted a pass and scampered 96 yards for a score and Mickey Cochrane ran a kickoff back 95 yards for a touchdown. Appalachian administered the other loop defeat by a 39-0 count.

Victims of the Panther attack were William and Mary, 7-0, Guilford 7-6, E. C. T. C. 25-0, and W. C. T. C. 7-2.

Highlighting the season was the consistent performance of the veterans and the encouraging showing of several freshmen. Veterans Lloyd Johnson, Willis Tarver, Frankie Fernandez, C. A. Watts, Seymour Franklin, and Mickey Cochrane were brilliant in many games. Freshmen Henry Lewis, Arthur Griswold, George Demmy, Paul



COBLE SHOFFNER
Trainer



HAL YOW
Manager

Altier, Alvin Boles, and Joe Petack exhibited skill and finesse which makes Coach Virgil Yow look to the future with optimism.

Captain Seymour Franklin was the only letterman to graduate. With many returning next year plus the new material, it looks like better days are here for football.

"H" HIGH POINT VARSITY SQUAD



ALTIER
AUMAN
BENNETT
BOLES
CASE
CASHATT
CLIFTON
COCHRANE
COUNIHAN

DEMMY
EARLE
FERNANDEZ
FORNEY
GREESON
GRISWOLD
JOHNSON
LAWRENCE
LEWIS

MILLS
MOORE
MORTON
PETACK
SANDUSKY
TARVER
WATTS
WEINER
ZURAS

FOOTBALL RESULTS

High Point	13;	Elon	19
High point	7;	Lenoir-Rhyne	32
High Point	13;	Catawba	31
High Point	7;	William & Mary	0
High Point	0;	Appalachian	39
High Point	0;	Wofford	3
High Point	7;	Guilford	6
High Point	0;	Emory and Henry	14
High Point	25;	E. C. T. C.	0
High Point	7;	W. C. T. C.	2

BASEBALL "ROSES AND THORNS" OF THE 1939 SEASON

The 1939 Purple Panthers of the diamond, after a rather shaky early season start, roared through their half dozen games on the winning side. The belated surge of power gave the nine a season's record of nine wins and eight reversals.

Pacing the mound staff were Freshman June Scotton from Thomasville and the veterans Elmer Cashatt and Hal Yow. The hitters were led by Rightfielder Gilmer Wagonner. The team was characterized by a well-balanced infield which did a good job despite the record of defeats. As a defensive club, the Panthers were brilliant, but in crucial moments sometimes lacked the so vital scoring punch.

RESULTS

High Point	5;	Catawba	4
High Point	4;	Lenoir-Rhyne	4
High Point	4;	Ohio Wesleyan	6
High Point	7;	Elon	15
High Point	6;	Lenoir-Rhyne	5
High Point	1;	Elon	7
High Point	3;	McCrary	10
High Point	3;	Catawba	5
High Point	3;	Elon	11
High Point	10;	A. C. C.	3
High Point	4;	A. C. C.	3
High Point	6;	Guilford	3
High Point	6;	W. C. T. C.	0
High Point	9;	E. C. T. C.	2
High Point	4;	E. C. T. C.	3
High Point	3;	E. C. T. C.	22
High Point	9;	E. C. T. C.	8

THE 1939 DIAMOND SQUAD



BASKETBALL, 1939 - 1940

Although they were forced to vacate their North State Conference throne which they held last year, the Panthers who uphold the Purple and White on the basketball court, cruised through the 1939-40 basketball season with 21 wins and six losses, a fine record in anybody's league.

Every power in the conference had their Big Bertha guns trained on the Panthers this season, and even though they fought doggedly, Coach Virgil Yow's charges could not successfully overcome Appalachian league champs, and Elon, both of whom spanked the Panthers twice. A one-point loss to Hanes Hosiery and a defeat by Western Carolina Teachers were the only other blotches on the Panther slate.



HAMPTON, Center
 LOMBARDY, Guard
 PATTERSON, Center

COUNIHAN, Guard
 DEMMY, Guard
 MORAN, Guard
 ZURAS, Guard
 HARTNETT, Forward

KEENE, Center
 MURRAY, Forward
 HUMPHREY, Forward

SEASON'S RESULTS

High Point	31;	Roanoke	30
High Point	46;	Hanes	47
High Point	57;	Newport News	53
High Point	43;	McCrary	39
High Point	47;	Langley Field	43
High Point	45;	William and Mary	24
High Point	43;	Naval Base	32
High Point	51;	E. C. T. C.	35
High Point	58;	A. C. C.	26
High Point	55;	Guilford	21
High Point	39;	Catawba	34
High Point	35;	McCrary	34
High Point	55;	Catawba	37
High Point	43;	Appalachian	62
High Point	19;	Elon	40
High Point	40;	Appalachian	62
High Point	59;	Lenoir-Rhyne	45
High Point	51;	A. C. C.	32
High Point	39;	Elon	40
High Point	44;	Mexico	34
High Point	45;	Guilford	44
High Point	56;	Lenoir-Rhyne	36
High Point	48;	Spindale	39
High Point	41;	W. C. T. C.	46
High Point	53;	W. C. T. C.	39
High Point	42;	Enka	39
High Point	46;	Hanes	43

The season's opener saw the Pack slip by a Pulaski, Va., independent team by a 31-30 score. Next night came the Hanes loss, but the next eleven foes succumbed to High Point. But then came the 62-43 loss to Appalachian; four nights later at Elon, High Point collapsed and Elon walked away with a 40-19 triumph. To finish up a hectic week, Appalachian tripped the local five 59-40 at Boone. With these three defeats went all chances for the loop title.

After this mid-season nightmare, the Panthers pulled themselves together and roared through the remainder of the schedule with just two reverses—a heart-breaking 40-39 loss to Elon and a 46-41 defeat to W. C. T. C. Among the teams that fell in this late season surge were the University of Mexico, Lenoir-Rhyne, Enka Mills, and W. C. T. C. A fitting climax to a successful year came in the last game when the Panthers had just won the Carolinas A. A. U. crown.

Captain Hugh Hampton rounded out four years of brilliant service as varsity center, scoring 314 points for the season. Hilliard Nance, who was sick when the Zenith pictures were taken, was certainly a well man the remainder of the season, as he poured 177 points through the net. Jack Moran, Jerry Counihan, Bill Keene, and Frank Murray were veterans always in the thick of battle. Bill Patterson, Milliard Coble, George Welborne, Bob Merhige, and Boyce Wynn moved up from the Purple Kittens to become valuable members of the Varsity Squad.

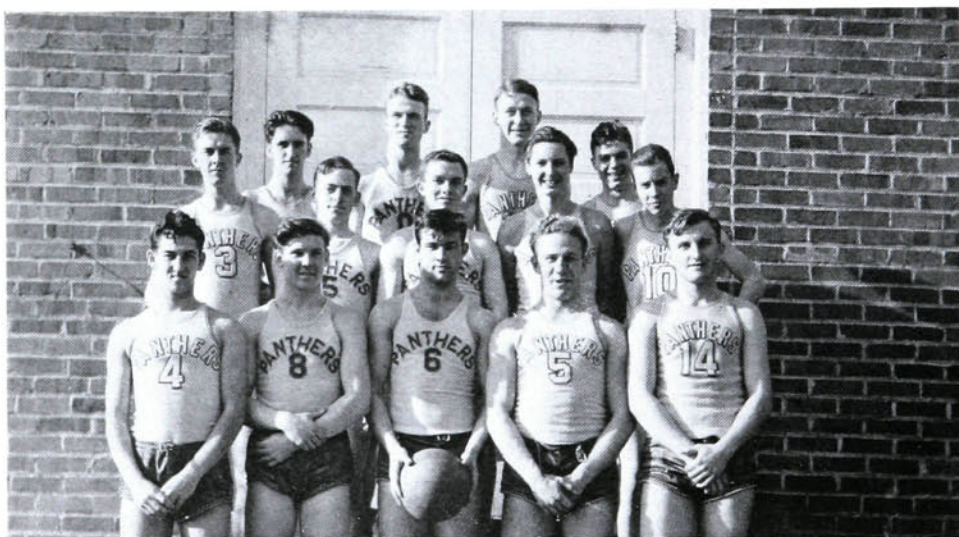
A freshman combination composed of George Zuras, Russ Lombardy, George Demmy, Tennis Humphrey, and Emmett Hartnett performed like veterans, and when Coach Yow thinks of this quintet and the future, he smiles.

With Hampton the only man graduating, the Panthers should roll on to new heights next season.

JUNIOR VARSITY BASKETBALL

The Junior Varsity basketball team, under the direction of Coach Clayton Glasgow, this year amassed a fine record. The Junior Varsity, or "B" team, played preliminary games to the home varsity encounters as well as playing several games in the afternoon. Most of the games were played with high schools and with fast amateur and independent teams.

Although a great number of boys saw action, the following were outstanding: Morton "Ugly" Littman was a dead pot shot artist, Henry Lewis was a fine all around player, Malcolm Riley and Robert Kearns were good under the basket, and Sam Fowler and Vernon Forney were good steady performers. Others who saw action for Coach Glasgow were Joe Petack, Harry Sandusky, Horace Giles, Burke Koontz, Bayne Kever, Duncan Monroe, Jimmy Moore and John Farlow.





Coached by the versatile Hugh Hampton, the 1939 version of the Purple Panther soccer squad continued the winning ways which made them able to lay claim to the mythical state championship during 1938. With a fine array of regulars as the nucleus, plentiful reserve power was the keynote of the Panthers' success. The fine playing of Koontz, Kinascykuk, S. Coble, Short, M. Coble, Coach Hampton, Rosen, Lewis, H. Garmon, R. Garmon, Zuras, Carter, Bond, Hicks, and Ferree accounts for the story of power and supremacy which is best told in the results of the season's encounters.

RESULTS

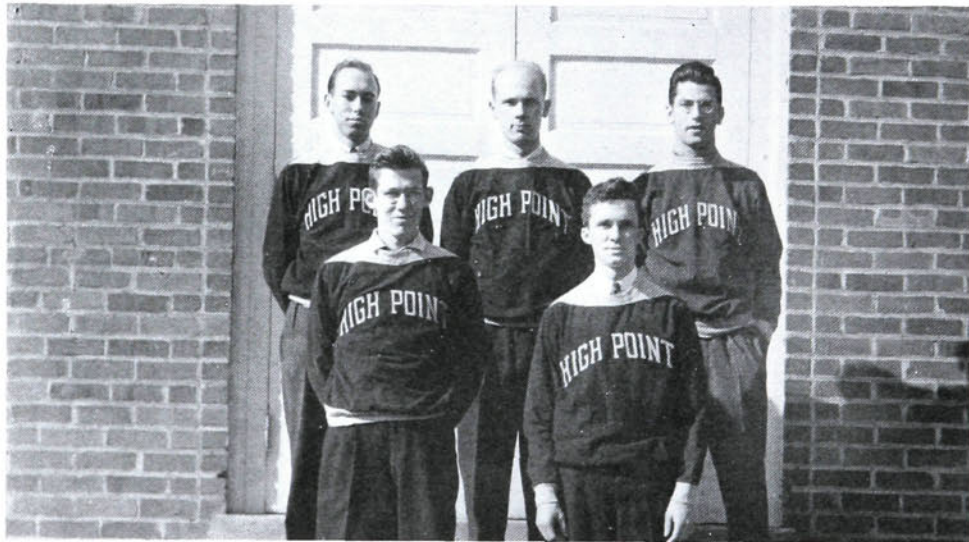
High Point	2;	High Point Y.	0
High Point	3;	Jamestown	1
High Point	1;	Duke	1
High Point	6;	Davidson	2
High Point	0;	Frostburg	3
High Point	2;	Seton-Hall	2
High Point	4;	Duke	0
High Point	3;	Davidson	2
High Point	2;	High Point	0

S O C C E R 1 9 3 9

T E N N I S

Although the record of the Purple Panther tennis aggregation has not been a good one the team has fought hard and has given a good account of itself. Because of bad weather and a lack of adequate tennis courts, the team did not acquit itself with a fine record. From the 1939 team, there are four returning lettermen. Richard Short and Reginald Hinshaw, seniors, will be completing four years of college tennis. Albert Earle is playing his third year. William Frazier is playing his second year.

From last year's tennis team, two members were lost, these being Morton Samet, number one man, and the letterman, Porter Hauser. However, chances for the season of 1940 are brighter than in the past because of the easier schedule and because of the returning veterans. The other post on the team will probably be filled by some of the new material, although very little is known about the court tactics of the freshmen and transfer students.





To provide both wholesome recreation and practical training is the aim of the Woman's Athletic Association. This year has certainly marked the high point of attainment and success as the Association marched forward trailing new and bigger clouds of glory in the field of girls' athletics.

Under the capable presidency of Esther Miran and the generous assistance of the physical education instructor for women, Miss Strickler, the association grew in both activity and number of members.

To become a member of this organization of national standing, a girl must earn a minimum of twenty-five points. To become the proud owner of a college letter, she must earn five hundred points, and for the much desired college sweater, a total of two thousand points is required.

Intramural tournaments of soccer, basketball, volleyball, softball, and tennis topped off by the annual banquet and dance were the high lights in this year's program.

W O M A N ' S A T H L E T I C A S S O C I A T I O N

OFFICERS

ESTHER MIRAN *President*
 DORIS HOLMES *Vice-President*
 LUCILLE JOHNSON *Secretary*
 GRACE BIVENS *Treasurer*



MISS STRICKLER
Physical Education Director

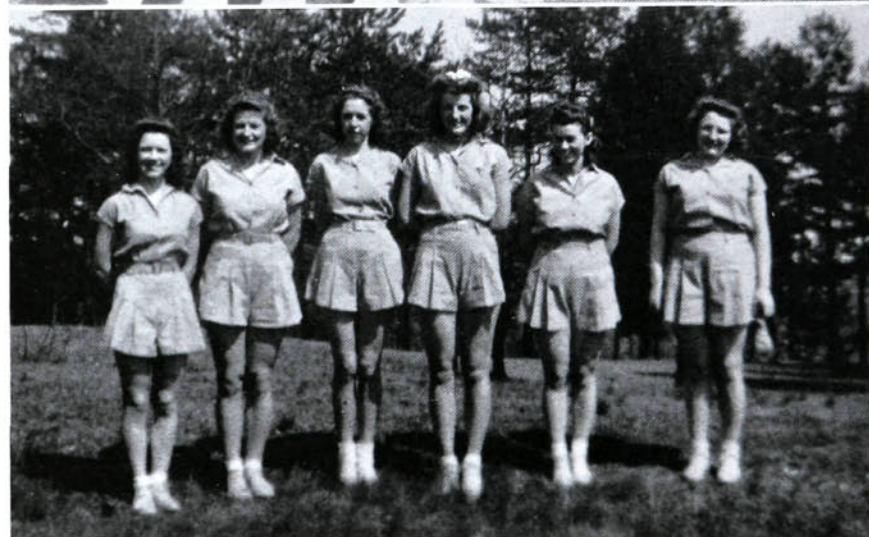
SOCCER



VOLLEY BALL

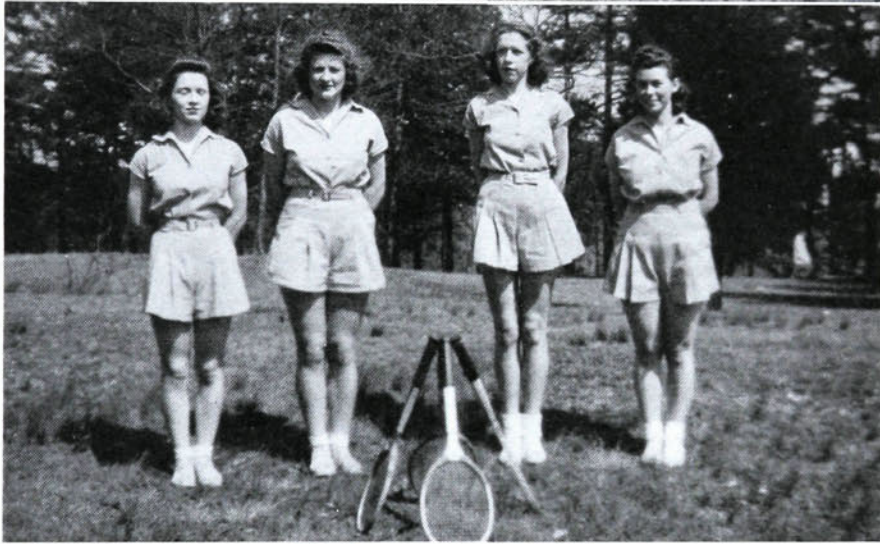


BASKETBALL

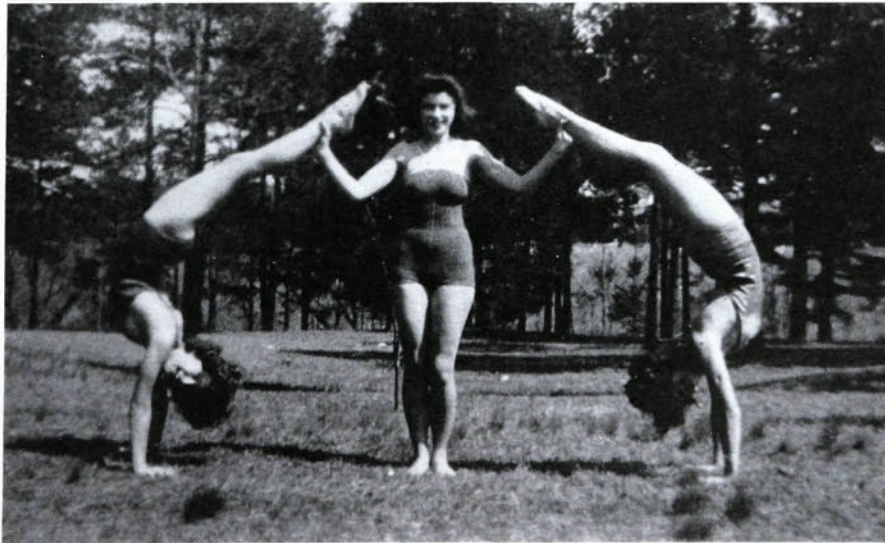




RIDING



TENNIS



DANCING



FEATURES







COLLEGE MARSHALS

LEE
KENNETT
GRANT

EARLE, *Chief*

CROWDER
TEMPLETON

KOONTZ
AUSTIN
MORAN



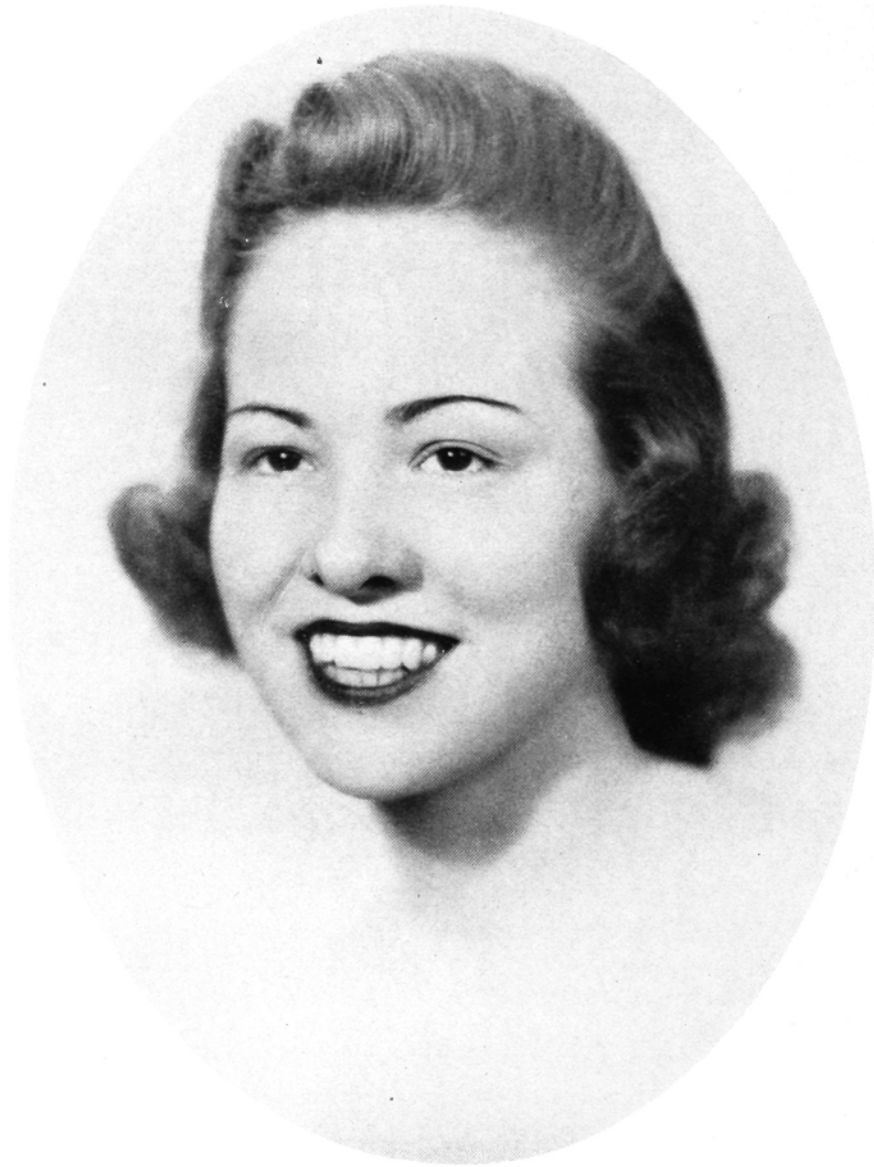
MISS EDITH VANCE

SPONSOR SENIOR CLASS

MISS HELEN CROWDER

SPONSOR JUNIOR CLASS





MISS VIRGINIA HUNT

SPONSOR SOPHOMORE CLASS

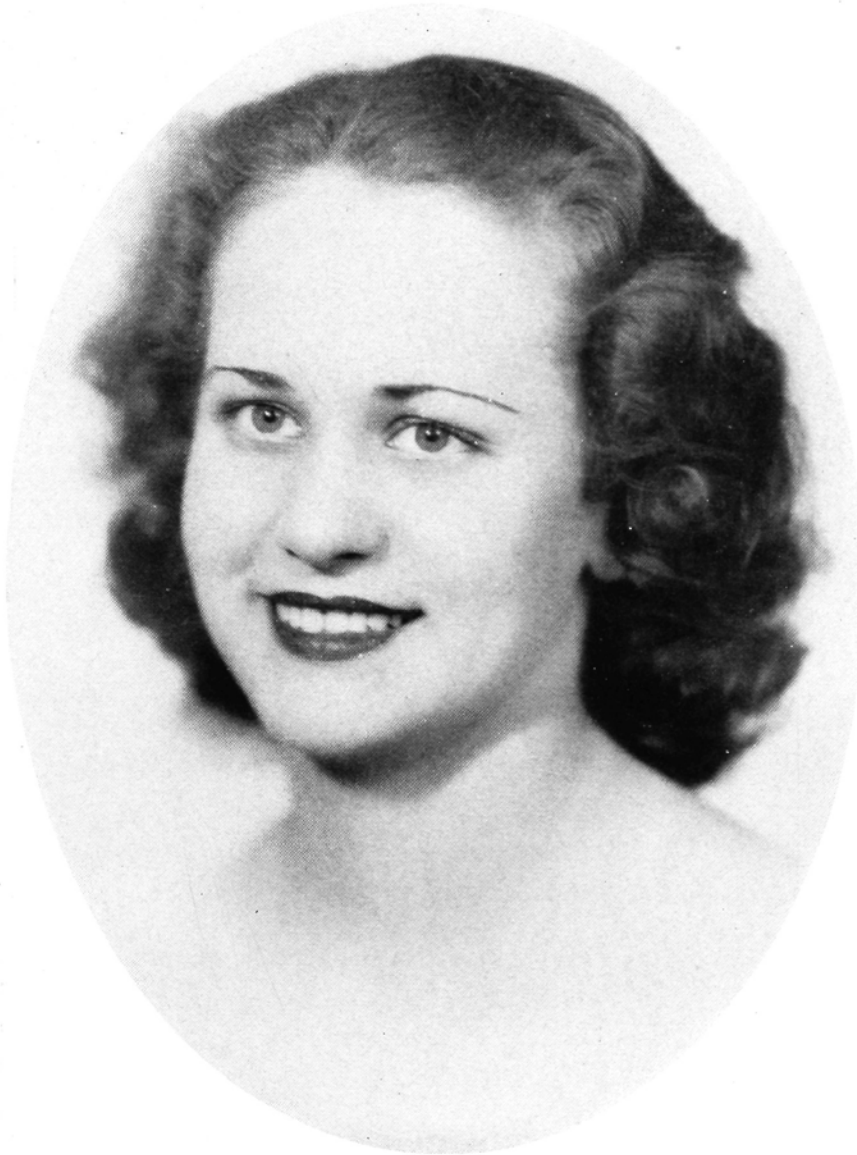
MISS JULE WARREN

SPONSOR FRESHMAN CLASS

Chosen by Cecil B. DeMille

as

The Most Beautiful



MOST POPULAR

MARC LOVELACE
EDITH VANCE



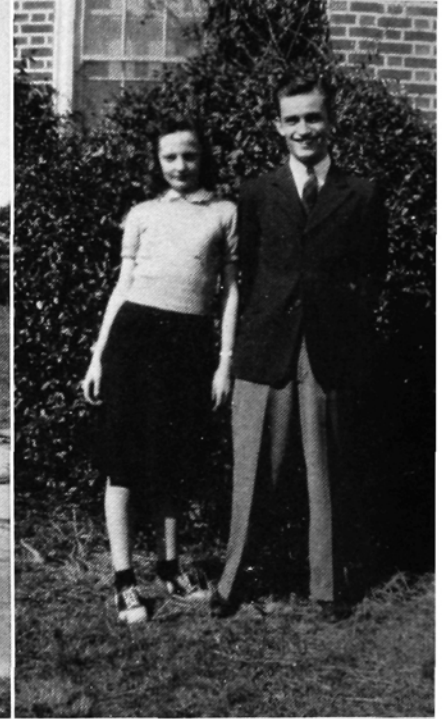
MOST INTELLECTUAL

WILLIAM RENNIE
MARGUERITE McCASKILL



MOST VERSATILE

ARCHIE WILLIAMS
RUTH MERELYN THOMPSON



MOST FRIENDLY

FRANK HEGE
MARGUERITE McCASKILL

BEST LOOKING

FRANK HARTMAN
JOSEPHINE WEANT

BEST SPORTS

GEORGE ELKINS
NELL HOLTON

MOST ATHLETIC

HUGH HAMPTON

ESTHER MIRAN



MOST ORIGINAL

ROBERT JOHNSON

HELEN WALLER



SENIOR SUPERLATIVES





MAY QUEEN
MISS VEREL WARD

MAY DAY FESTIVITIES, 1939



The good will of men, women and children who contact this organization casually or in business constitutes the principal asset which maintains it as a service institution. Our sincere desire to serve our many patrons well and unselfishly is widely recognized and our ability to do this is established.

HIGH POINT, THOMASVILLE AND DENTON RAILROAD COMPANY



"NOTHING BUT SERVICE TO SELL"

HIGH POINT FURNITURE CO.

HIGH POINT, N. C.

First Furniture Factory Established
in High Point

Compliments
of
PRINCESS CAFE

PENNEY'S

You'll find the right combination of style, quality
and price! Shop at Penney's and save!



J. C. PENNEY CO., INC.



THE
PHOTOGRAPHS

IN THIS ANNUAL
WERE MADE BY

Daniel and Smith
Studios

134 Fayetteville Street

Raleigh, North Carolina



FINE PORTRAITS
PROMPT SERVICE



Largest College Annual
Photographers In The South



Compliments of

GREENSBORO NEHI BOTTLING CO.

Bottlers of

ROYAL CROWN COLA

Thrift Is Essential for Intelligent Citizenship

HIGH POINT SAVINGS & TRUST CO.

SERVING SINCE 1905

Member Federal Deposit Insurance Corporation

FOR QUALITY DAIRY
PRODUCTS

Lindale
DAIRY CORP.

"It's Our Pleasure to Serve You"

WEST LEXINGTON AVE.

HIGH POINT, N. C.

Take Your Trip by Bus

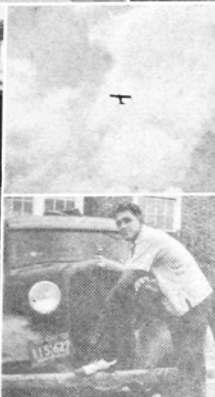
Ask for GREENSBORO-FAYETTEVILLE
TICKET

Out of High Point to Asheboro,
Fayetteville, Wilmington, Florence,
Charleston, and all points
South.

Charter a Bus and Keep Your
Party Together

Call Your Local Bus Station
for Further Information

GREENSBORO-FAYETTEVILLE
BUS LINES
ASHEBORO, N. C.



SARTIN DRY CLEANING CO.

Dial 4501

1670-76 Eng. St.



DUTCH LAUNDRY, INC.

Dial 3319

829-33 S. Main St.



COMPLIMENTS

OF

CECIL'S DRUG CO.



**BEESON HARDWARE
COMPANY**



"Your Sporting Goods
Headquarters"

Try O & C

Frosted Fruits & Vegetables

and

Atlantic Quick Frozen Fish

W. I. ANDERSON & CO.

GREENSBORO, N. C.

FOR IMPORTED AND DOMESTIC

Champagne, Wine, Beer, Ale

Potato Chips

Always Fresh

Fried Daily

Paul Yount's Package Store

790 N. Main St.

Phone 2661

Without Printing Modern Education

Would Be Impossible

**BARBER HALL PRINTING
COMPANY**

PHONE 2385

**HIGH POINT STEAM
LAUNDRY**

Dry Cleaners and Dyers

PHONE 3325



COMPLIMENTS

OF

NEW SERVICE LAUNDRY





Harlee's

High Point's Quality Department
Store

CUT RATE FURNITURE CO.

Complete Home Furnishings

615-616 East Green St.

HIGH POINT, N. C.

Phone 2879

KOONCE FUNERAL HOME

Incorporated

PHONE 4545

Compliments

of

KING COTTON HOTEL

GREENSBORO, N. C.

COMPLIMENTS OF

W. A. DAVIS MILLING COMPANY

Compliments

of

INGRAM'S PHARMACY

DE SOTO

PLYMOUTH

FURNITURE-CITY MOTORS

Incorporated

792 N. Main St.

PHONE 3296

Compliments

of

EFIRD'S DEPARTMENT STORE

HIGH POINT, N. C.

FIVE POINTS SANDWICH SHOPPE

Sandwiches—Drinks

Phone 47315

TRY OUR FRIED CHICKEN SANDWICH

Compliments

of

S. H. KRESS

Compliments of

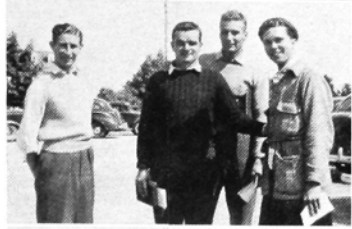
CHARLES STORE

STYLE MERCHANDISE

BERRY COAL COMPANY

GREENSBORO, N. C.

Quality Coal, Coke, Fuel Oil and
Combustioneer Stoker



DRINK

BIRELEY'S

It's Not Carbonated

Lewis & Holmes Motor Freight CORPORATION

HIGH POINT, N. C.

ATLANTA, GA.

Service Through the Southeastern States

High Point Office Phone 4503

NORTH STATE TELEPHONE CO.

Serving High Point and Vicinity

W. C. BROWN SHOE SHOP QUALITY SHOE SHOP

128 N. WRENN ST.

PHONE 4313

LYLES CHEVROLET CO., INC.

CHEVROLET

Sales

Cars—Trucks

Service

HIGH POINT, N. C.

HEDGECOCK LUMBER COMPANY

1215 WARD ST.

PHONE 4006

GUILFORD GENERAL HOSPITAL

Compliments of

CENTRAL ICE DELIVERY COMPANY

Phone 4507

512 W. Broad St.

HIGH POINT HARDWARE CO.

127 South Main St.

D. & M. SPORTING GOODS

"Anything for the Game"

Welcome to

THE SHERATON HOTEL

"Noted for Good Food"

W. G. MALONE, Manager

BETTY LOU SHOPPE

Women's Apparel—Millinery
Accessories

"A Store You Love to Visit"

111 SOUTH MAIN ST.

DRINK

Orange-Crush

CARBONATED BEVERAGE

ORANGE-CRUSH BOTTLING CO.

Greensboro, N. C.

In the Brown Flavor-Guarding Bottle



DUKE POWER COMPANY

Gas, Power, Transportation

233 S. MAIN

PHONE 2700

HIGH POINT COLLEGE

GIDEON IRELAND HUMPHREYS, A.M., D.D., President

"IN THE HEART OF THE PIEDMONT"

MODERN FIRE-PROOF BUILDINGS

NON-SECTARIAN

CO-EDUCATIONAL

RATED STANDARD "A" GRADE BY STATE BOARD OF EDUCATION

Courses in Education, Language, History, Commerce, Home Economics, Science, Religious
Education, Music, Phy. Ed.—leading to Degrees of A.B. or B.S.

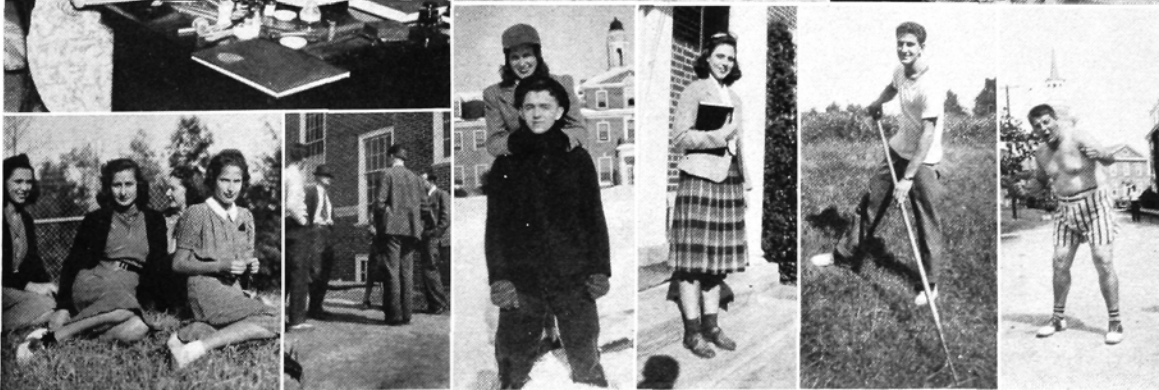
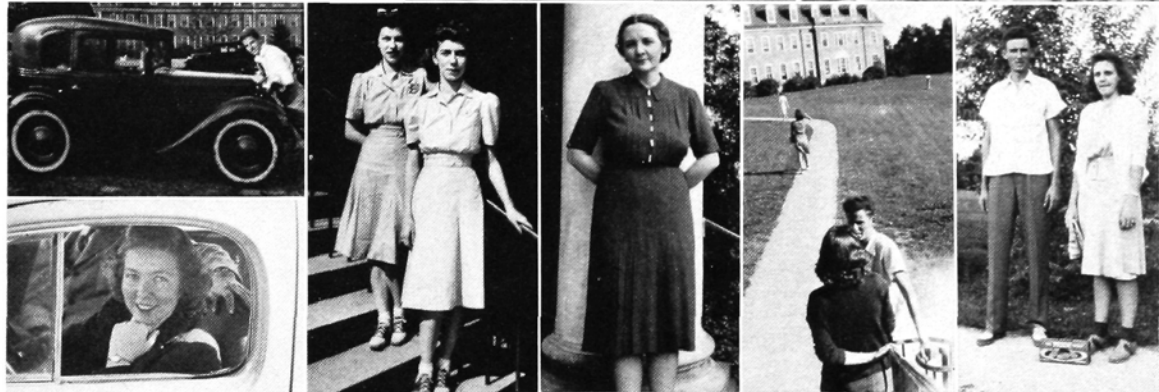
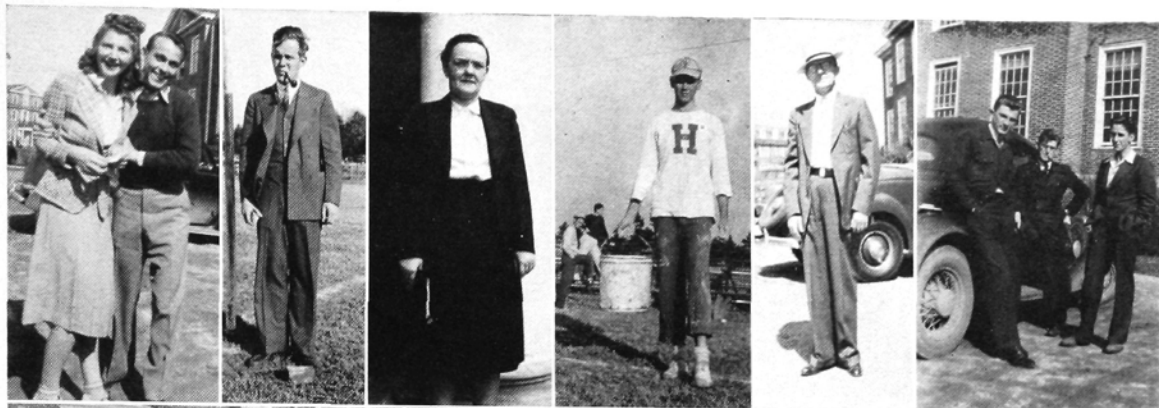
Low Rates Put College Training in Reach of the Young With Limited Means

"A GROWING COLLEGE IN A GROWING CITY"

For Catalogue Apply to
PRESIDENT OR REGISTRAR

HIGH POINT COLLEGE

HIGH POINT, N. C.



J. W. SECHREST AND SON

Since 1897

AMBULANCE SERVICE

Dial 3349

STUDENTS' HEADQUARTERS

HIGH POINT COLLEGE BOOK STORE

Books—School Supplies—Refreshments

OFFICIAL COLLEGE RINGS AND JEWELRY

DRINK

The Coca-Cola logo is written in its signature cursive script. A small, circular emblem is located at the base of the 'C' in 'Coca', containing the words 'TRADE MARK' and 'SINCE 1886'.

IN BOTTLES

COCA-COLA BOTTLING COMPANY
OF HIGH POINT

GRACE FLOWER SHOP

DIAL 4085

MAIN AT WASHINGTON ST.

"The Best in Flowers"

EDGAR SNIDER

Printing that Promotes!

460 N. Wrenn St.

Phone 3242

BOB SNIDER, College Representative

N. L. GARNER, AGENCY

PERFECT
PROTECTION
AYS

EVERY WAY
EVERY DAY

226 Professional Bldg.

Phone 4648

OCCIDENTAL LIFE INSURANCE CO.

COMPLIMENTS
OF

North Carolina Theatres

- * CENTER
- * BROADHURST
- * PARAMOUNT
- * CAROLINA
- * RIALTO

Carrick Service Station

North Main at Montlieu

"OUR SERVICE IS SINCERE"

Burrus Memorial Hospital

And

Burrus Clinic

Gibson's
ICE CREAM

MAIN MOTORS, Inc.

BUICK MOTOR CARS

900 N. Main St.

High Point, N. C.

COMPLIMENTS OF
JOLLY CAB CO.

RALPH BULLA, President
GEORGE B. ELDER, Treasurer
(Former Student)

QUALITY FURNITURE CO.

600 North Main Street
TELEPHONE 3207

CLOVER BRAND DAIRIES

INCORPORATED

PASTEURIZED PRODUCTS

Phone 4553

MILK - BUTTER - ICE CREAM

Mann's Cut-Rate Drug Store

High Point, N. C.

Kannapolis, N. C.

Greensboro, N. C.

Reidsville, N. C.

Thomasville, N. C.

Burlington, N. C.

N. H. SILVER CO.

QUALITY CLOTHES FOR MEN

129 South Main Street

High Point, N. C.

HIGH POINT PAPER BOX

COMPANY

INCORPORATED

High Point, N. C.

COMPLIMENTS

Of

BLUE BIRD CAB CO.

COMPLIMENTS

Of

ROSE FURNITURE CO.

De LUXE DINER

DIXIE DINER

DIXIE DINER

Greensboro

Raleigh

Always The Best Place For Real Food

COMPLIMENTS OF

Allen Thacker - Frances Muse

Bus. Mgr.

Editor

1939 ZENITH

ELLIOTT FLORAL CO.

FLOWERS FOR ALL OCCASIONS

Sheraton Hotel Bldg.

Phone 2586

COMPLIMENTS OF

BURT ASBURY

1935 ZENITH EDITOR

COMPLIMENTS

Of

A FRIEND

COMPLIMENTS OF

HIATT TIRE COMPANY





Achievement

~ ACHIEVEMENT IN ANY LINE
OF ENDEAVOR IS THE NATURAL
RESULT OF ABILITY AND
EXPERIENCE, PLUS OPPORTUNITY.
~ THIS ORGANIZATION TAKES PRIDE
IN ITS SUCCESS ~ SUCCESS EARNED
BY THE ABILITY OF ITS MEMBERS,
THE EXPERIENCE GAINED IN
TWENTY YEARS OF EFFORT, AND
THE OPPORTUNITIES OFFERED BY
ITS CLIENTS.

CHARLOTTIE ENGRAVING
COMPANY INC.

ARTISTS- PHOTO-ENGRAVERS-DESIGNERS
CHARLOTTE
NORTH
CAROLINA

ESTABLISHED NINETEEN FIFTEEN



World's Largest Publishers

THIS BOOK DESIGNED AND PRINTED BY

Benson

PRINTING COMPANY ☆ NASHVILLE

of College Annals

WRENN MEMORIAL LIBRARY
HIGH POINT COLLEGE
HIGH POINT, N. C.



9128

