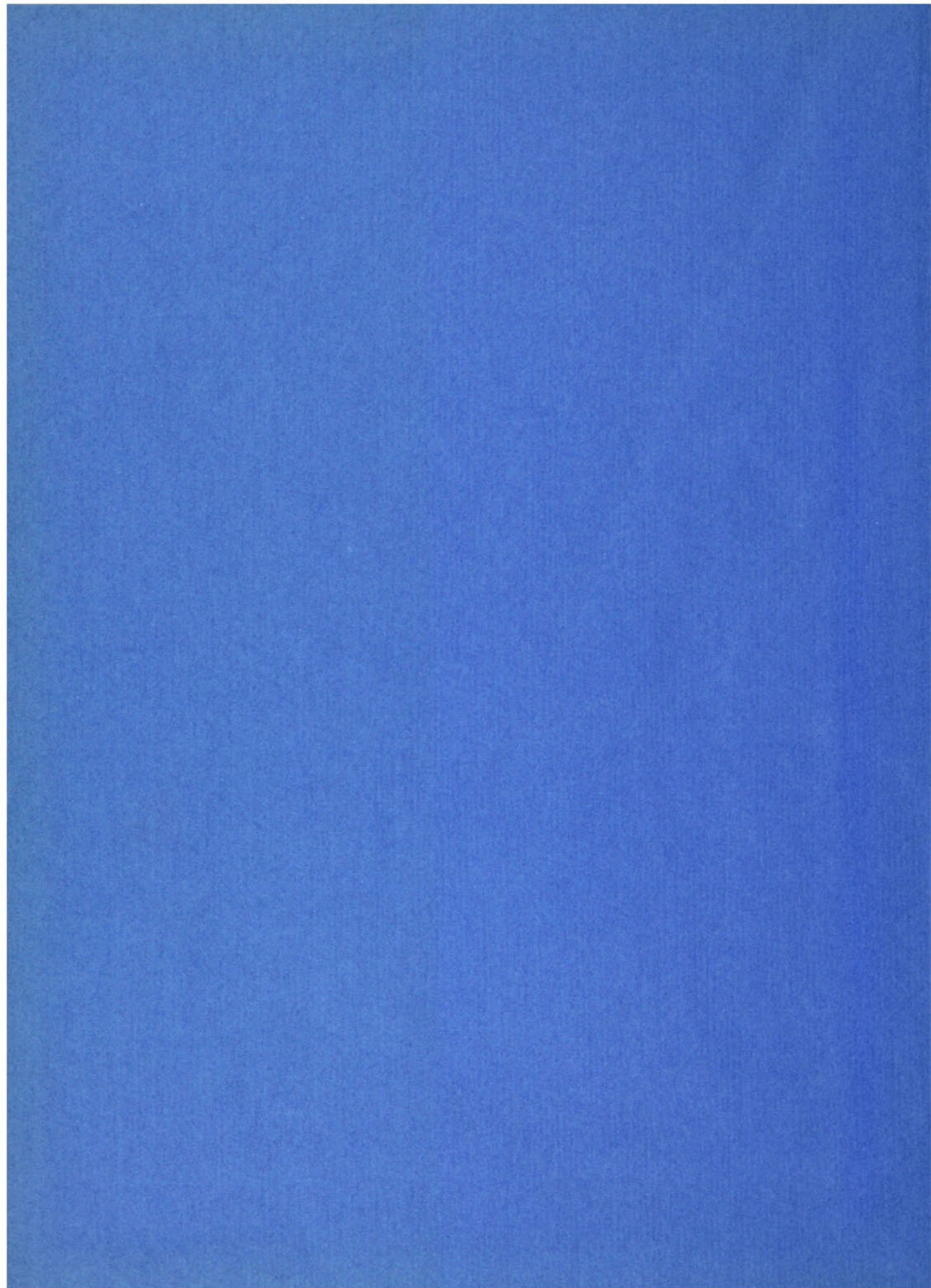
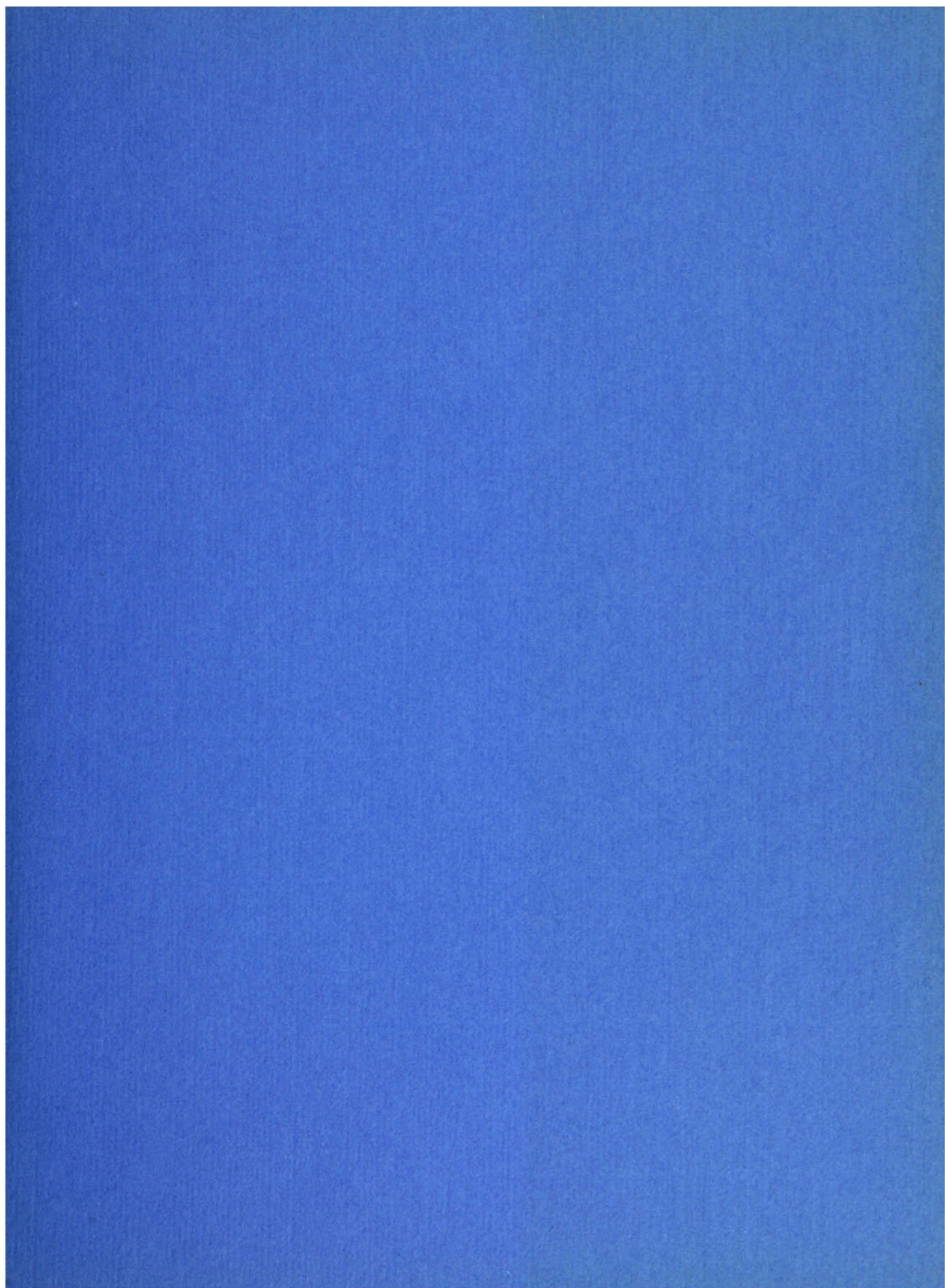


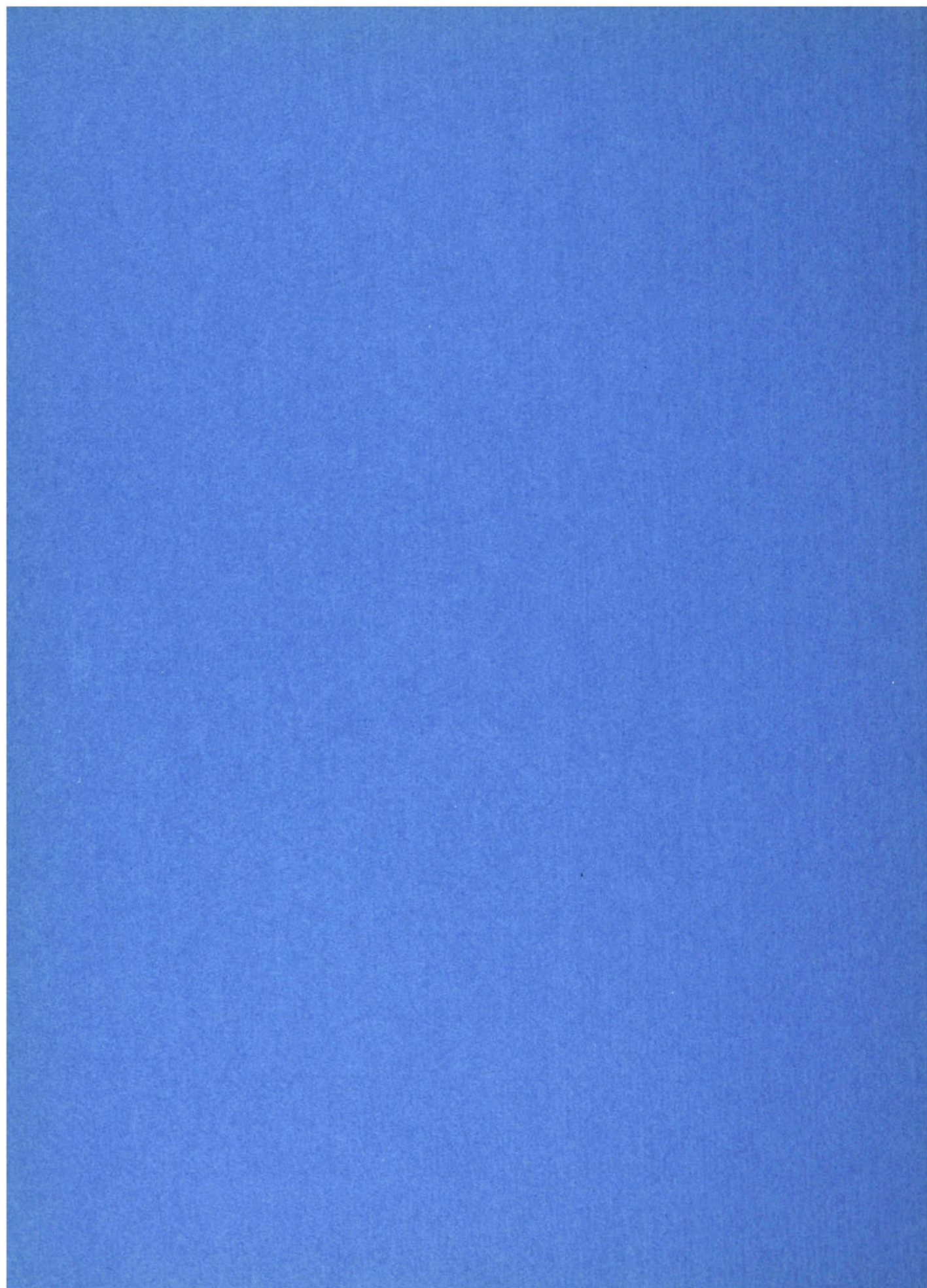


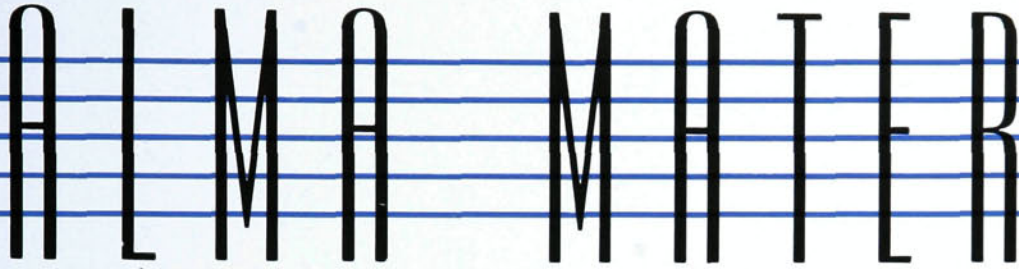
1942

THE ZENITH









# ALMA MATER

In our hearts we hold the mem'ry  
Of a place we love the best;  
O'er it waves the purple banner,  
Emblem of its fearlessness.

## Chorus

We praise thy name and honor true,  
They stand for loyalty and love;  
May yours be fame that to you is due  
For you we'll always fight,  
We want the right  
To uphold thy standards high;  
To give the best we have to thee,  
Memories of you we will cherish,  
H. P. C.

When we're on the field of battle,  
When we strive for praise to thee;  
May our teams be undefeated,  
Ours the crown of victory.



THE

IRIS THACKER AND  
DARRELL ALLRED  
PRESENT THIS

# 1942 ZENITH

PUBLISHED BY THE  
STUDENT BODY OF  
HIGH POINT COLLEGE  
• HIGH POINT, N. C. •

F O R E



CONTENTS

COLLEGE • FEATURES •



# W O R D

Dear Fellow Students . . .

Herein find our year's collection of fun, friendships, and love, even smattering evidences of knowledge. Keep them, or the bits you like, and thru the years, refer to them for proof of our year's happiness. In behalf of the staff, we want you to know that we enjoyed assembling the important notes of our symphony, the year

---

---

---

---

of harmonious and joyful experiences at HPC. From our hearts we hope you like your year-book, your approval being the only reward that could repay us. Here is our dedication of love, loyalty, and faith in our Alma Mater. A hearty toast to the dear institution which the ZENITH portrays and represents, and long may she live!

Iris and Darrell

**ORGANIZATIONS • ATHLETICS**

The staffs of the Zenith take pleasure in  
dedicating the volume of 1942 to

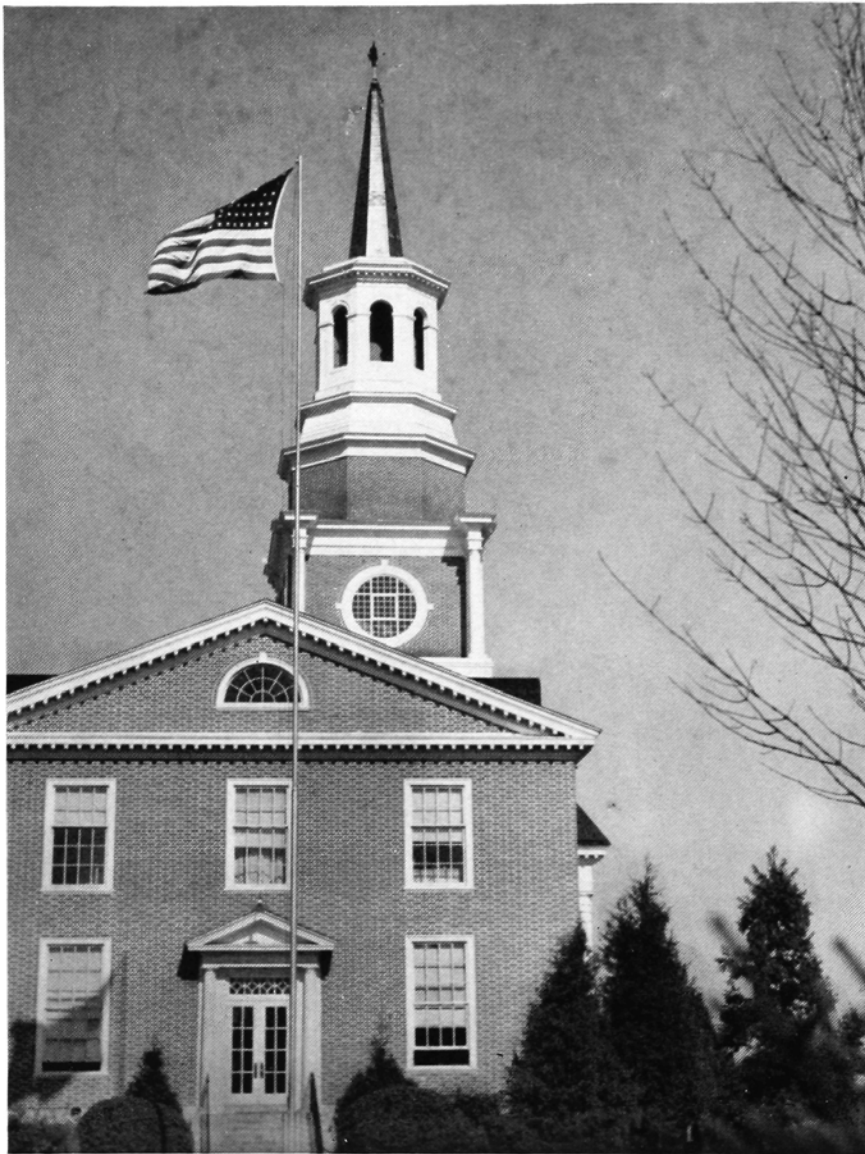
*Mr. Henry Frank Hunsucker*

A man who illustrates in his own successful career as manufacturer and citizen every high standard for success held as an ideal before youth; one who has maintained throughout his entire career an unfailing interest in the development of young people in everything that makes for a well-rounded life, physically, mentally, and morally; so modest and unassuming that the world knows little of his contributions for the material and spiritual betterment of mankind; a successful business man, a zealous Christian gentleman, an all-out American citizen, and a benefactor of his fellowman.

D E D



ICATION



. . . of scenic memories like this, of those who make the campus home, of appreciation to the faculty, of the seniors who're "stepping out," of the inside things that linger longest . . .



C O L L E G E





PRESIDENT GIDEON IRELAND HUMPHREYS, A.M., D.D., LL.D.

**BOARD  
OF  
TRUSTEES**

H. A. MILLIS . . . . . *President*  
 N. M. HARRISON . . . . . *Secretary-Treasurer*

J. D. WILLIAMS, D.D.	H. A. MILLIS	L. F. ROSS
J. M. MILLIKAN	G. H. KEARNS	MRS. M. J. WRENN
J. NORMAN WILLS	B. K. MILLOWAY	W. A. LAMBETH, D.D.
F. LOGAN PORTER	EARNEST W. TEAGUE	J. E. PRITCHARD, D.D.
MRS. C. F. FINCH	REV. N. M. HARRISON	CHARLES W. MCCRARY
REV. J. C. AUMAN	J. S. PICKET	H. F. HUNSUCKER
	S. W. TAYLOR, D.D.	





R. Howard Gunn, Bursar; Alice Paige White, Acting Librarian; C. R. Hinshaw, Director of Instruction, Summer School and Extension; Mrs. Mabel T. Millikan, Social Director Woman's Hall; N. P. Yarborough, Registrar; C. Lucille Johnston, Secretary to President and Assistant Bursar.

## OFFICERS OF ADMINISTRATION

Allen Austen, Graduate Manager of Athletics; Mrs. C. L. Whitaker, Work Supervisor; Mabel Warlick, Field Representative of College; Ferne King, Dietitian; Verel Ward, Office Secretary; Percy E. Lindley, Dean of Students; Mrs. Lillian M. Green, House Mother McCulloch Hall; N. M. Harrison, Promotional Secretary.







Mourane, Conner, Johnson, Hill, Cummings

## SCIENCE

J. HARLEY MOURANE . . . B.S., M.S.  
*Professor of Chemistry and Physics*

ELIZABETH H. CONNER . . . B.S., M.A.  
*Instructor of Biology*

ADA B. JOHNSON . . . B.S., M.S., M.A.  
*Professor of Home Economics*

BENJAMIN H. HILL . . . M.S., PH.D.  
*Professor of Biology*

EDMUND O. CUMMINGS . . . B.S., PH.D.  
*Professor of Chemistry*

Blickensderfer, Fleischmann, Fields, Whitlock

## MUSIC AND ARTS

OLIN R. BLICKENSDERFER . . . A.B.  
*Director of Band and Instructor of Music*

MARGARET W. FLEISCHMANN . . . A.B.  
*Instructor of Dramatics*

ERNESTINE FIELDS . B.MUS., B.S., M.MUS.  
*Instructor in Music*

VERA E. WHITLOCK B.MUS., A.B., M.MUS.  
*Head of Music Department*



## PHYSICAL EDUCATION

JAMES R. MCCACHREN . . . . . A.B.  
*Assistant Director Physical Education*

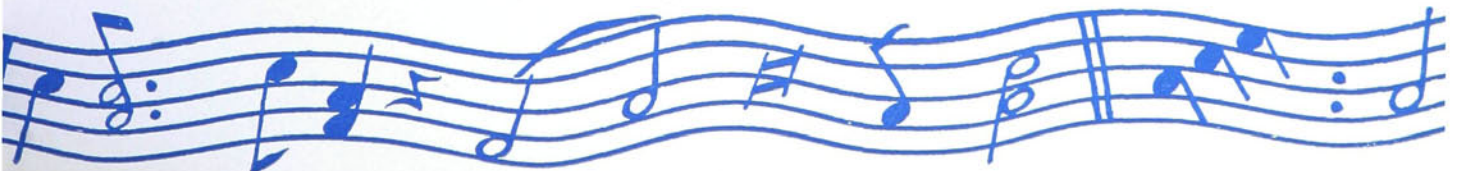
FRANCES CHAPMAN . . . . . B.S.  
*Director Physical Education for Women*

E. C. GLASGOW . . . . . A.B.  
*Assistant Football Coach*

VIRGIL C. YOW . . . . . A.B.  
*Director Physical Education for Men*



McCachren, Chapman, Glasgow, Yow





Lindley, Bartlett  
Lovelace, Hinshaw, Kennett  
Adams, Berry, Owens, Gunn, Dulac

## ACADEMICS

- PERCY E. LINDLEY . . . . . A.M., LITT.D.  
*Professor of Religious Education*
- HELEN R. BARTLETT . . . . . A.M., PH.D.  
*Associate Professor of History and Social Science*
- A. C. LOVELACE . . . . . A.B., M.ED.  
*Associate Professor of Education*
- CLIFFORD R. HINSHAW, M.A., A.M., LITT.D.  
*Professor of Education and Psychology*
- PAUL S. KENNETT . . . . . B.D., LL.D.  
*Professor of History*

## BUSINESS ADMINISTRATION

- LOUISE ADAMS . . . . . A.B., A.M.  
*Instructor in Mathematics*
- ALDA T. BERRY . . . . . A.B., M.A.  
*Instructor Business Administration*
- PAUL S. OWEN . . . . . B.S., M.B.A.  
*Instructor Business Administration*
- R. HOWARD GUNN . . . . . A.B.  
*Instructor Business Administration*
- E. BARTON DULAC . . . . . B.S., M.A.  
*Assistant Instructor Business Administration*

## LANGUAGES

- E. VERA IDOL . . . . . A.B., A.M.  
*Professor of English*
- E. C. GLASGOW . . . . . A.B.  
*Instructor in English*
- ALICE PAIGE WHITE . . . . . A.B., A.M.  
*Professor of Greek and Latin*
- J. HOBART ALLRED . . . . . A.B., A.M.  
*Professor of Modern Languages*
- NATHANIEL P. YARBOROUGH . A.B., A.M.  
*Associate Professor of Modern Languages*



Idol, Glasgow, White, Allred, YARBOROUGH



# SENIOR CLASS

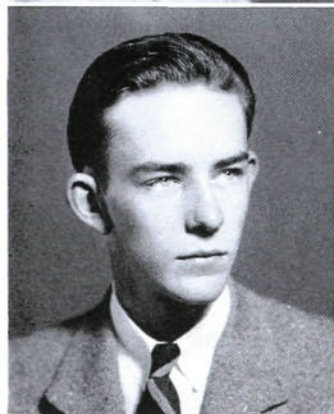
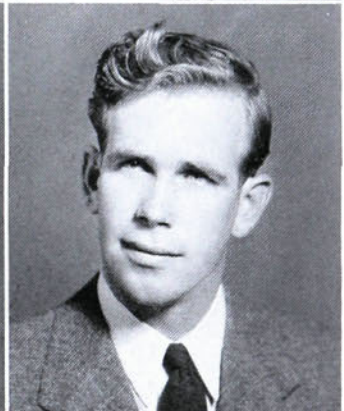


HUGHES, GUTHRIE, LEWIS, BERRY

## OFFICERS

ELVIN LEWIS . . . . .	<i>President</i>
RUSSELL HUGHES . . . . .	<i>Vice-President</i>
AUDREY GUTHRIE . . . . .	<i>Secretary</i>
HARRIET BERRY . . . . .	<i>Treasurer</i>





H P C



# THE SENIOR CLASS

WILLIAM DARRELL ALLRED

ARCHDALE, N. C.

B.S. in Business Administration

*Delta Alpha Epsilon*

Day Student Council, 3; Pan-Hellenic, 4;  
Who's Who, 4; ZENITH, 3, 4, Business Man-  
ager, 4; Senior Superlative.

ROBERT M. ANDREWS

TRENTON, N. J.

B.S. in Business Administration

Band, 1, 2, 3, 4; *Hi-Po*, 1; I. R. C., 2, 3;  
Treasurer, 2, 3; Akrothian Literary So-  
ciety, 1, 2, 3, Secretary, 2, Vice-President, 3;  
Christian Endeavor, 1, 2.

WILLIAM LESTER BALLARD

MONROE, N. C.

A.B.

Soccer, Manager, 4; Football, 4.

HARRIETT ELIZABETH BERRY

HIGH POINT, N. C.

A.B.

*Theta Phi*

Artemesian Literary Society, 1, 2, 3, 4,  
President, 4; Footlighters, 1, 2, 3, 4, Secre-  
tary, 4; W. A. A., 1, 2, 3, 4; A Capella  
Choir, 2, 3, 4, Vice-President, 4; Student  
Government, 2; College Marshal, 3; Honor  
Roll, 3; Class Treasurer, 4; Who's Who, 4.

GRACE BIVINS

HILLSBORO, N. C.

B.S. in Music

*Theta Phi*

I. R. C., 1, Secretary, 1; W. A. A., 1, 2, 3,  
4, Treasurer, 2; Cheerleader, 2; Class Sec-  
retary, 2, Treasurer, 3; A Capella Choir,  
2, 3, 4, Vice-President, 3; Footlighters, 3, 4;  
Honor Roll, 1, 2, 3, 4; College Marshal, 3;  
Student Government, 4, Secretary, 4; Music  
Medal, 3; Pan-Hellenic, 4, Secretary, 4;  
Who's Who, 4; Senior Superlative.

STANTON L. BLAYLOCK

LEXINGTON, N. C.

B.S. in Business Administration

Pfeiffer, 1, 2.

GLADYS CHARLIE BROOKS

MC FARLAN, N. C.

B.S. in Home Economics

Montreat Junior College, 1, 2; Nikanthen  
Literary Society, 3, 4, Program Committee,  
3, President, 4; Modern Priscilla Club, 3,  
4, Treasurer, 4; Future Teachers, 4; Chris-  
tian Endeavor, 3, 4, Program Committee,  
3, 4.

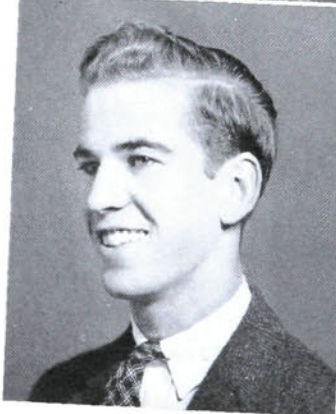
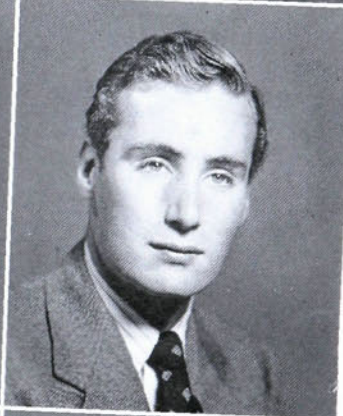
LOUIS ARTHUR BOPP

BRONX, N. Y.

A.B.

New York University, 1, 2; Akrothian  
Literary Society, 3.





H P C



# THE SENIOR CLASS

JEWELL CAMPBELL

HIGH POINT, N. C.

A.B.

*Alpha Theta Psi*

Nikanthan Literary Society, 1, 2, 3, 4; W. A. A., 1, 2, 3, 4; Future Teachers, 4; Day Student Council, 4.

ELMA WOOD CHAMBLISS

TRIPLETT, VA.

A.B.

Madison College, 1; Nikanthan Literary Society, 2, 3, 4; I. R. C., 2; W. A. A., 2; Honor Roll, 3; Future Teachers, 4.

MATTIE RUTH COBLE

HIGH POINT, N. C.

A.B.

*Alpha Theta Psi*

W. A. A., 1, 2, 3, 4; Nikanthan, 2, 3, 4.

MILLARD LEE COBLE

HIGH POINT, N. C.

A.B.

Basketball, 1, 2, 3, 4; Soccer, 1, 2, 3, 4; Coach, 3; Baseball 2; Track, 2.

JAMES BANKS CHILTON

HIGH POINT, N. C.

A.B.

A Capella Choir, 1, 2, 3, 4; College Quartet, 2; Thalean Literary Society, 1, 2, 3, 4, Reporter, 2, Vice-President, 4; B. S. U., 1, 2, 3, 4; Future Teachers, 3, 4; College Marshal, 3; ZENITH, 4; Day Student Council, 4; President, 4; Who's Who, 4; Religious Council, 4.

JEROME EDWARD COUNIHAN

FREEPORT, L. I.

A.B.

*Iota Tau Kappa*

Tennis Team, 1, 2, 3, 4; Football, 1, 2; Basketball, 1, 2, 3, 4 Captain, 4; Dormitory Council, 2, President, 4; Vice-President, Student Body, 3; College Chief Marshal, 3; Footlighters, 3, 4, President, 4; Who's Who, 4; Akrothinian Literary Society, 1, 2, 3; Senior Superlative.

RALPH WARREN COX

HIGH POINT, N. C.

B.S. in Business Administration

ZENITH Business Staff, 4; Basketball, 4.

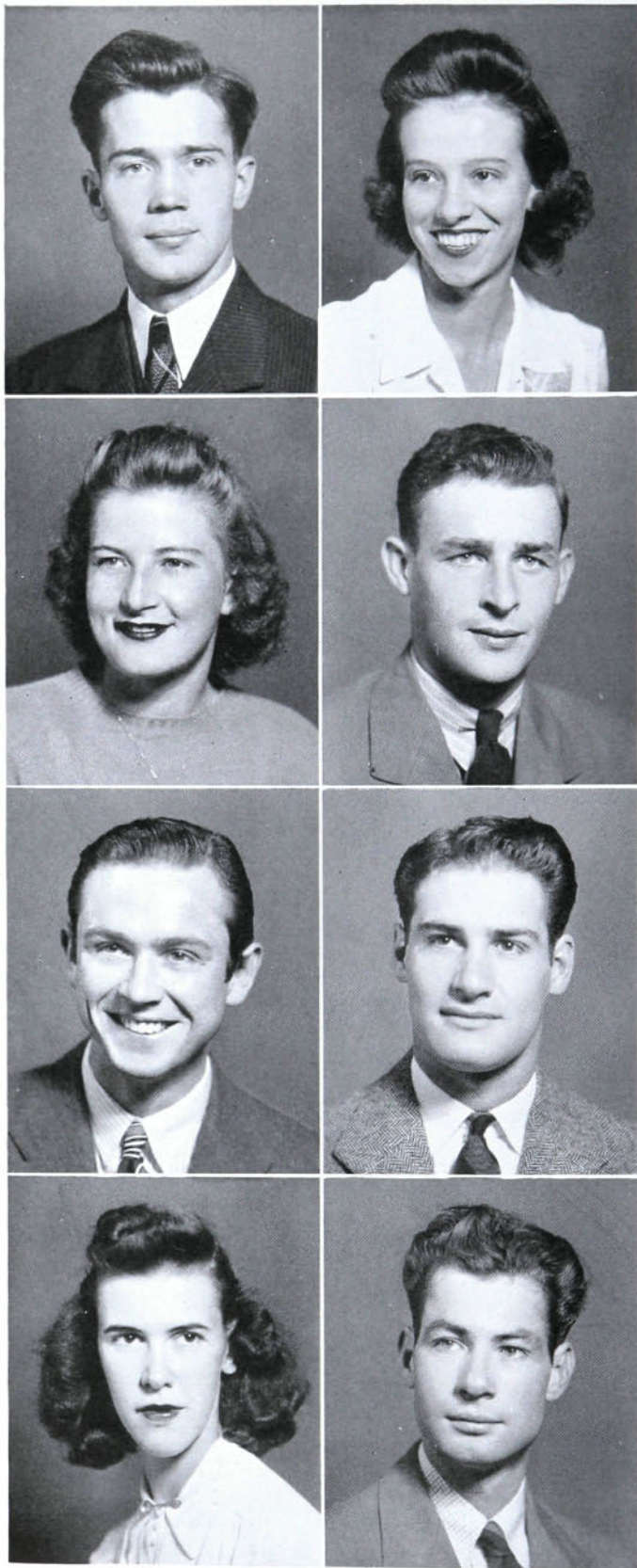
ROBY CLYDE CLODFELTER

WALLBURG, N. C.

B.S. in Business Administration

Honor Roll, 1.





H P C





# THE SENIOR CLASS

JOHN HERMAN DAVIS

THOMASVILLE, N. C.

B.S. in Business Administration

*Hi-Po* Staff, 1, 2, 4, Circulation Manager, 2, 4; Track, 1, 3; Soccer, 1, 2, 3, 4, Manager, 2; Thalean Literary Society, 1, 2, 3, 4; Christian Endeavor, 1, 2, 3; Honor Roll, 3; Block "H," 4.

FLORENCE LOUISE ELKINS

LIBERTY, N. C.

B.S. in Physical Education

*Theta Phi*

Artemesian Literary Society, 1, 2, 3, 4; W. A. A., 1, 2, 3, 4, Sergeant-at-Arms, 2, Vice-President, 3, President, 4; Student Government, 4, Treasurer, 4; Cheerleader, 2, 3, 4, Chief, 4; Tennis Award, 1; Senior Superlative.

HENRY AARON FERREE

HIGH POINT, N. C.

Pre-Medical

Pre-Medical Club, 1, 2, 3, 4; Pre-Dental Club, 1, 2, 3, 4.

ALMA ONETA FITZGERALD

HARRIS, N. C.

A.B.

Pfeiffer Junior College, 1, 2; Honor Roll, 3, 4; Nikanthen Literary Society, 3, 4; Future Teachers, 4; ZENITH, 4.

WILLIE MADORA EDWARDS

HIGH POINT, N. C.

A.B.

*Alpha Theta Psi*

Artemesian Literary Society, 1, 2, 3, 4; Monitor, 2; *Hi-Po*, 2, 4; Honor Roll, 2, 3, 4; Future Teachers, 4.

BANKS EVANS

LEXINGTON, N. C.

A.B.

*Iota Tau Kappa*

Junior Basketball, 1; Honor Roll, 3, 4; Soccer, 4.

FRANK LOUIS FERNANDEZ

CLARKSBURG, W. VA.

B.S. in Business Administration

*Epsilon Eta Phi*

Football, 1, 2, 3, 4, Captain, 4; Baseball, 1, 2, 3; Dormitory Council, 3, Vice-President, 3; Business Manager, Student Handbook, 3; College Marshal, 3; Block "H," 1, 2, 3, 4; Pan-Hellenic, 4; Student Council, 4; President, Student Body, 4; Who's Who, 4.

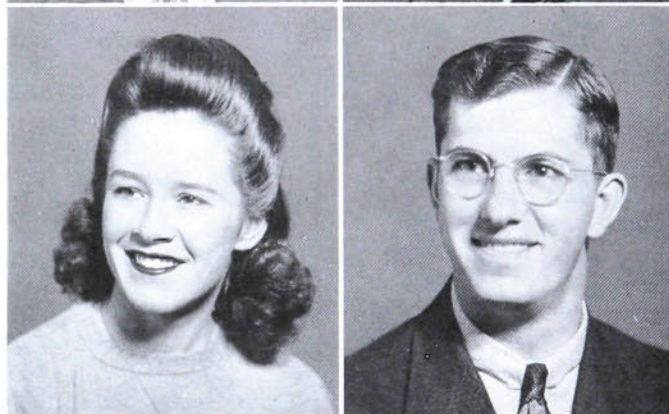
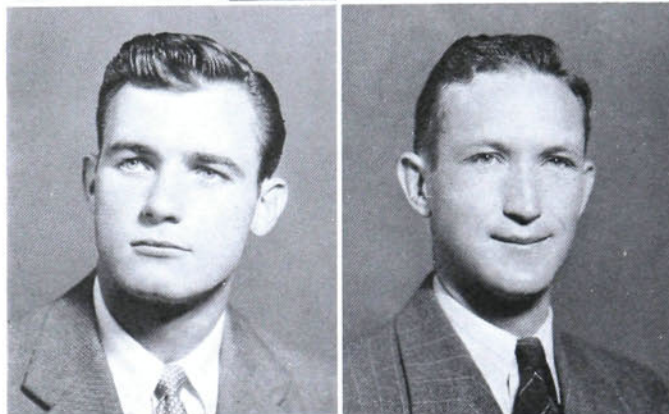
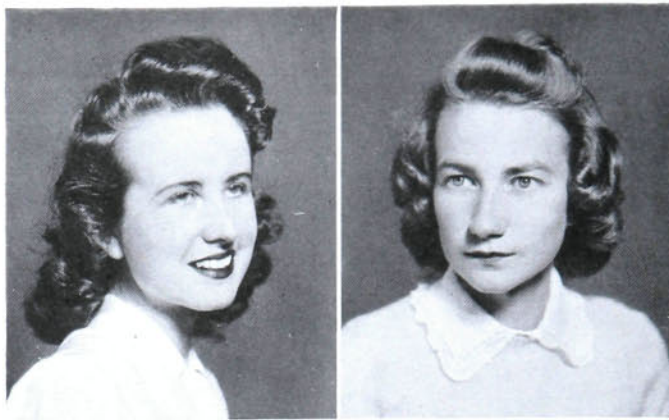
HOWARD K. GARMON

HIGH POINT, N. C.

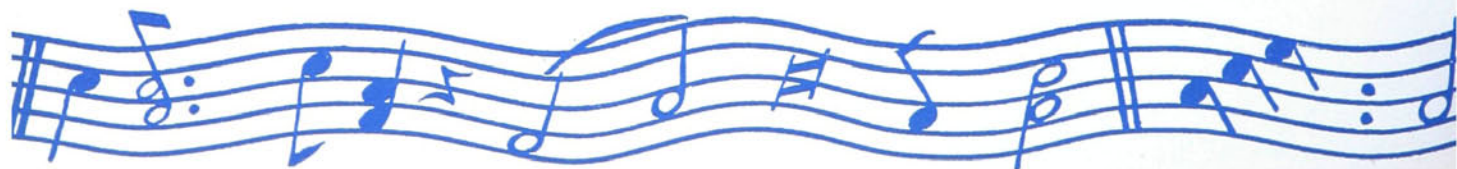
A.B.

Basketball, 1; Soccer, 1, 2, 3, 4, Captain, 3, 4; Pre-Medical, 1, 2, 3; Block "H," 2, 3, 4; Cheerleader, 3; Footlighters, 3, 4.





H P C



# THE SENIOR CLASS

HAZEL VERNON GIBSON

MARION, N. C.

B.S. in Home Economics

Pfeiffer Junior College, 1, 2; Nikanathan Literary Society, 3, 4; Modern Priscilla Club, 3, 4

RUTH GOOD

THOMASVILLE, N. C.

A.B.

*Alpha Theta Psi*

Honor Roll, 1, 2, 3, 4; Artemesian Literary Society, 2; *Hi-Po*, 2, 3, 4; Future Teachers, 4; ZENITH, 4; Senior Superlative.

EDGAR MONROE GREESON, JR.

GREENSBORO, N. C.

B.S. in Business Administration

*Epsilon Eta Phi*

Football, 1, 2, 3, 4; Baseball, 1, 2, 3, 4; Basketball, 1; Dormitory Council, 3; Block "H," 2, 3, 4; Aviation Club, 4.

WALTER BRYAN GREGORY

ANGIER, N. C.

A.B.

Ministerial Association, 1, 2, 3, 4, Secretary-Treasurer, 4.

AUDREY GUTHRIE

GRAHAM, N. C.

A.B.

*Theta Phi*

Nikanathan Literary Society, 1, 2, 3, 4; Chaplain, 3; W. A. A., 1, 2, 3, 4, Secretary, 3, 4; Basketball Award, 2; Class Secretary, 3, 4; Footlighters, 3, 4; A Capella Choir, 2; Square Dance Club, 4.

PARKER HOLMES HAGER

CONCORD, N. C.

A.B.

Brevard, 1, 2; Ministerial Association, 3, 4, President, 4; Christian Endeavor, 3, 4; Religious Council, 4.

FRANK HARRIS

CARROLLTON, GA.

A.B.

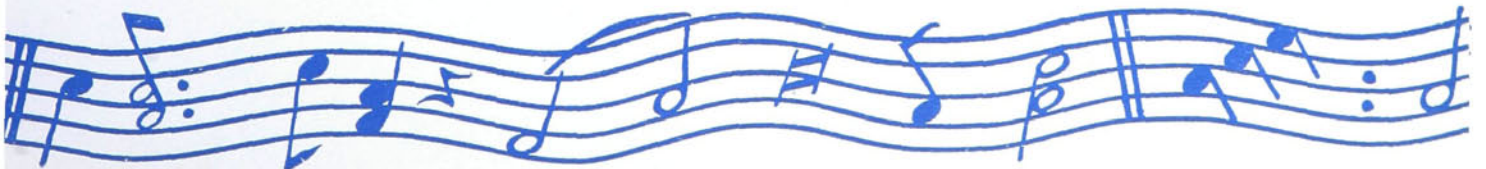
Class President, 1; Honor Roll, 1, 2, 3, 4; I. R. C., 1, 2; Akrothian Literary Society, 1, 2, 3, President, 3; Christian Endeavor, 1, 2, 3, 4, President, 4; College Marshal, 3; Lighted Lamp, 3, 4; Forensic Council, 3; Future Teachers, 3, 4; Who's Who, 4; Senior Superlative.

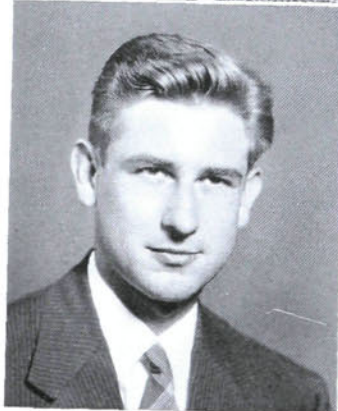
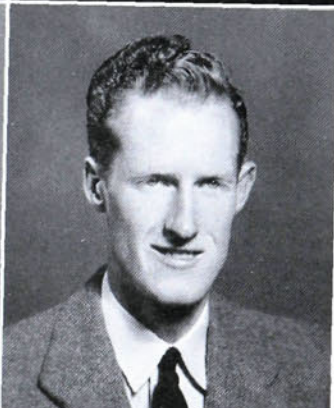
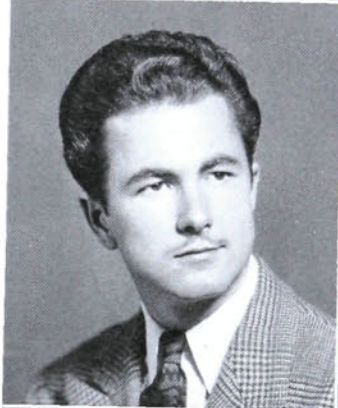
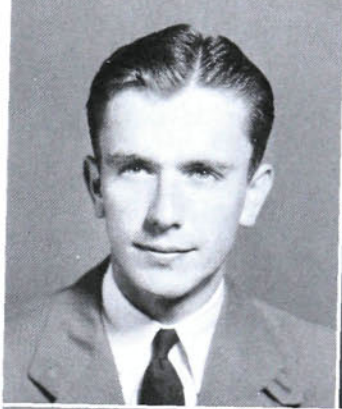
JOHN M. HAMM

TOBACCOVILLE, N. C.

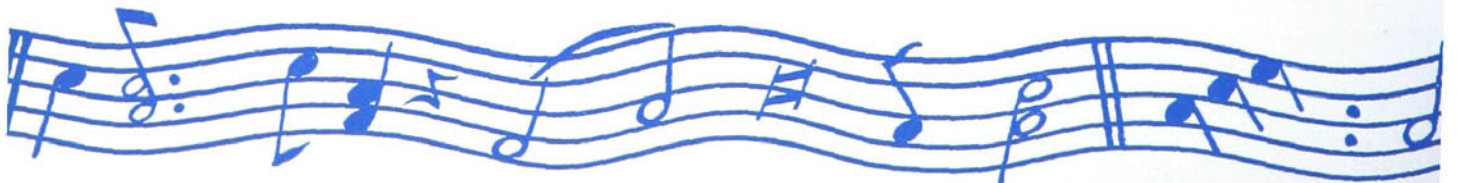
A.B.

Akrothian Literary Society, 1, 2, 3, Chaplain, 2, Secretary-Treasurer, 3; Ministerial Association, 1, 2, 3, 4, Reporter, 3, Chaplain, 4; Honor Roll, 3, 4; *Hi-Po*, 1, 2, 3, 4, Advertising Manager, 1, Business Manager, 2, 3.





H P C



# THE SENIOR CLASS

ROBERT B. HICKS

HIGH POINT, N. C.

B.S. in Chemical Engineering

Chemical Engineering Club, 1, 2, 3, 4.

VIVIAN GERALDINE HOOTS

WINSTON-SALEM, N. C.

A.B.

Appalachian, 1, 2, 3; Christian Endeavor, 4;  
Nikanthan Literary Society, 4; W. A. A., 4;  
Future Teachers, 4.

ROMIE RUSSELL HUGHES

SPENCER, W. VA.

B.S. in Business Administration

*Delta Alpha Epsilon*

Band, 1, 2, 3, 4; Drum Major, 1, 2, 3, 4;  
Class Vice-President, 3, 4; Student Govern-  
ment, 3; Marshal, 3; Senior Superlative.

GLADYS VIRGINIA HUNT

GRETNA, VA.

B.S. in Home Economics

*Sigma Alpha Phi*

Dormitory Council, 1, 3, 4; Head Proctor,  
3, 4; Class Treasurer, 2; W. A. A., 1, 2,  
3, 4; Nikanthan Literary Society, 1, 2, 3, 4;  
Monitor, 2; Modern Priscilla Club, 1, 2, 3,  
4, President, 4; Christian Endeavor, 1, 2, 3,  
4; I. R. C., 2; Forensic Council, 2; Pan-  
Hellenic, 4; Who's Who, 4; Honor Roll,  
1, 2, 3, 4.

JESSE PARIS JULIAN

FRANKLINVILLE, N. C.

B.S. in Science

Brevard, 1, 2.

JOHN WILBUR KEENE

FOUR OAKS, N. C.

B.S. in Business Administration

*Epsilon Eta Phi*

Basketball, 1, 2, 3, 4; Baseball, 4, 5;  
Akrothian Literary Society, 1, 2, 3, 4;  
Block "H," 2, 3, 4, 5; Dormitory Council, 4,  
President, 4.

CHARLES ODELL KENNERLY, JR.

LEXINGTON, N. C.

A.B.

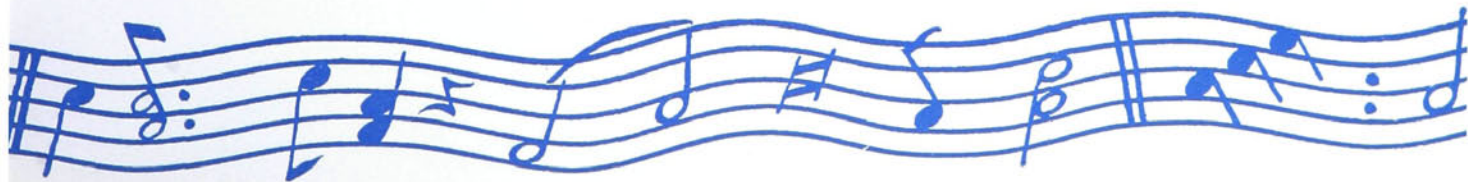
Brevard, 1, 2; Football Trainer, 4.

CHRISTINE ST. CLAIR KISER

KEEZLETOWN, VA.

B.S. in Home Economics

Artemesian Literary Society, 1, 2, 3, 4;  
Modern Priscilla, 1, 2, 3, 4.





H P C



# THE SENIOR CLASS

ANNE RUTH KITCHENS

PACAHT, S. C.

A.B.

*Alpha Theta Psi*

Artemesian Literary Society, 1, 2, 3, 4; W.  
A. A., 1, 2, 3, 4; *Hi-Po* Business Staff, 2;  
Future Teachers, 4.

WINFRED LAMAR

HIGH POINT, N. C.

B.S. in Chemical Engineering

*Epsilon Eta Phi*

Engineers Club, 1, 2, 3, 4; English Club, 2,  
3, Secretary, 2, 3; Honor Roll, 1, 2; Class  
Vice-President, 1.

HILDA V. LANIER

WELCOME, N. C.

A.B.

Appalachian State Teachers College, 1; W.  
A. A., 2, 3; Honor Roll, 2, 3, 4; Future  
Teachers, 4.

RALPH ODELL LANIER

LEXINGTON, N. C.

A.B.

Brevard, 1, 2.

EDITH REBECCA LEONARD

NORWOOD, N. C.

A.B.

Pfeiffer Junior College, 1, 2; Nikanthan Lit-  
erary Society, 3, 4; Future Teachers Club, 4.

FRED ELVIN LEWIS

WINSTON-SALEM, N. C.

A.B.

*Iota Tau Kappa*

Soccer, 1, 2, 3, 4, Coach, 4; Dormitory  
Council, 3; Class Vice-President, 3; Class  
President, 4; Senior Superlative.

LAWRENCE JOHN LINNEMAN

NEWARK, N. J.

A.B.

Debating Team, 4; Ministerial Association,  
3, 4; Akrothian Literary Society, 3;  
Thalean Literary Society, 4.

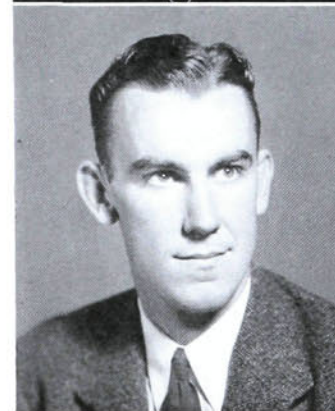
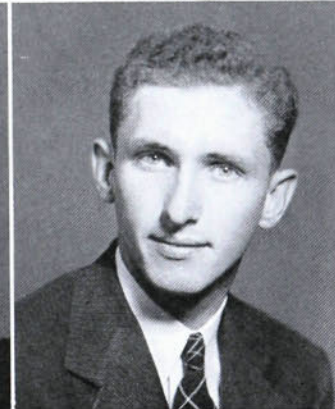
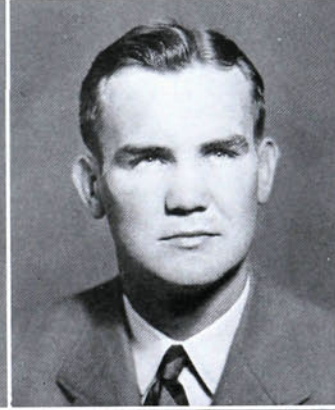
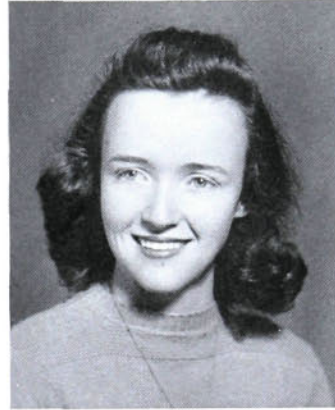
MARCEL CHARLES MALFREGEOT

CLARKSBURG, W. VA.

B.S. in Business Administration

Basketball, 1, 2, 3, 4; Football, 1, 2, Man-  
ager, 3, 4; Baseball Manager, 1, 2, 3; Soccer  
Manager, 1, 2.





H P C





# THE SENIOR CLASS

JAMES H. McCALL

HIGH POINT, N. C.

B.S. in Business Administration

*Delta Alpha Epsilon*

Band, 1, 2, 3, 4; Akrothian Literary Society, 1; Track, 2; Student Government, 4; ZENITH Business Staff, 4.

GRACE McPHERSON

SNOW CAMP, N. C.

B.S. in Business Administration

Elon College, 1, 2; Nikanthan Literary Society, 3, 4.

RUTH MAY

THOMASVILLE, N. C.

A.B.

*Alpha Theta Psi*

Honor Roll, 1, 2, 3, 4; Artemesian Literary Society, 2, 3; *Hi-Po*, 3, 4; Future Teachers, 4.

FRED A. MILLS

ROANOKE RAPIDS, N. C.

B.S. in Business Administration

*Epsilon Eta Phi*

Football, 1, 2, 3, 4; Baseball, 1, 2, 3, 4; Block "H," 4; Aviation Club, 4.

HILLIARD NANCE

THOMASVILLE, N. C.

B.S. in Physical Education

Basketball, 1, 2, 3, 4; Baseball, 1, 2, 3, 4; Block "H," 2, 3, 4; Senior Superlative.

CAROLYN NIFONG MOTSINGER

WINSTON-SALEM, N. C.

A.B.

Nikanthan Literary Society, 1; Christian Endeavor, 1; Future Teachers, 4.

IRENE PARKER

HIGH POINT, N. C.

A.B.

*Alpha Theta Psi*

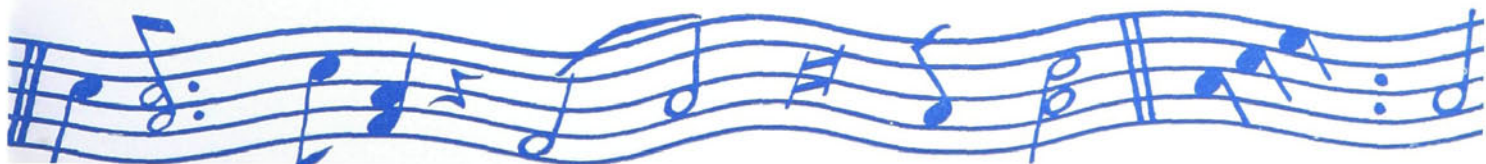
*Hi-Po*, 1, 2, 3, 4, Managing Editor, 2, Editor, 3, 4; Artemesian Literary Society, 1, 2, 3, 4; I. R. C., 1, 2; Class Secretary, 1; Student Council, 3; College Marshal, 3; Lighted Lamp, 3, 4; Future Teachers Club, 3, 4, President, 4; Who's Who, 4; Square Dance Club, 4; Senior Superlative.

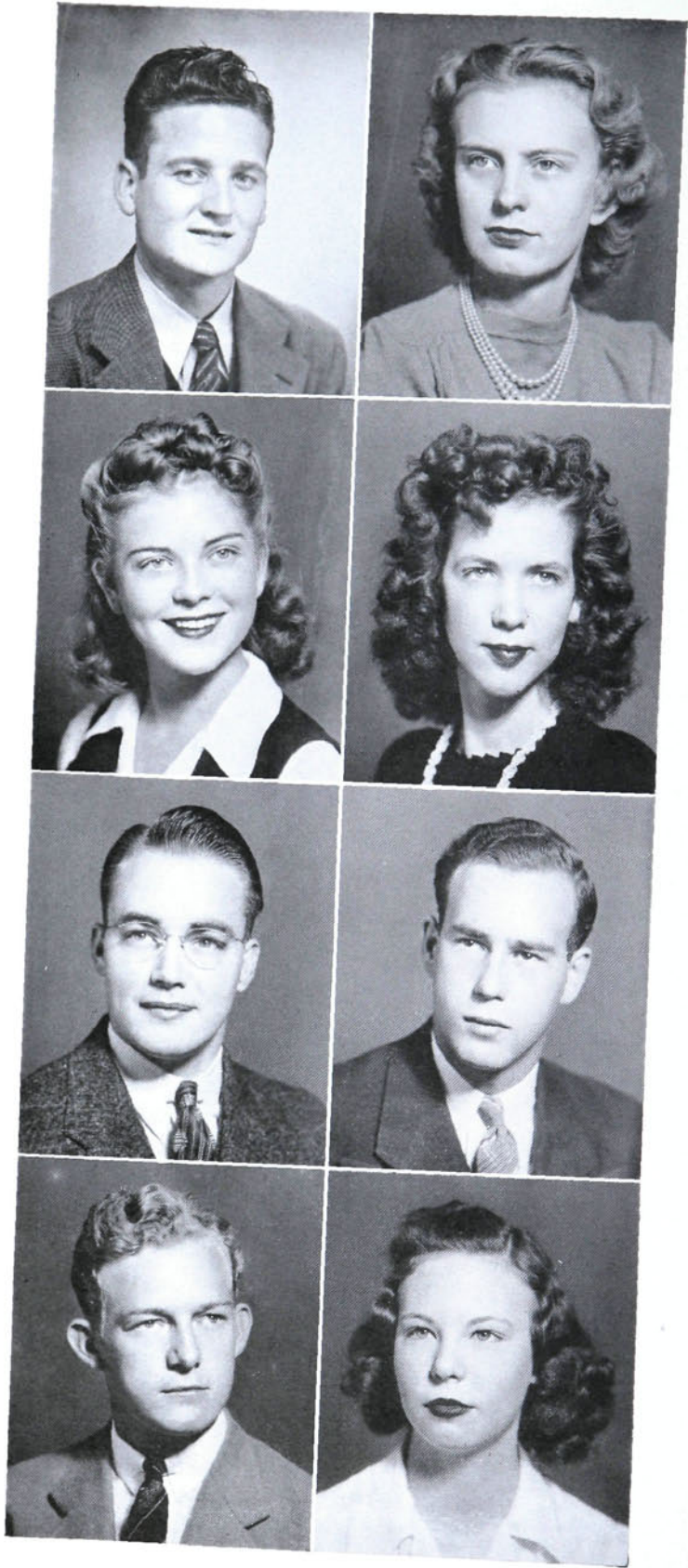
JAMES WILLIAM NEWLIN

GRAHAM, N. C.

A.B.

Guilford College, 1, 2, 3.





H P C



# THE SENIOR CLASS

## CHARLES WILLIAM PATTERSON

PILOT MOUNTAIN, N. C.

B.S. in Business Administration

*Epsilon Eta Phi*

Basketball, 1, 2, 3, 4; Akrothian Literary Society, 1, 2; I. R. C., 2; Dormitory Council, 4; Band, 2, 3, 4; Block "H," 2, 3, 4; Aviation Club, 4.

## MARJORIE JULIAN PUTNAM

SHELBY, N. C.

A.B.

Asheville College, 1, 2, 3; Modern Priscilla, 4; Nikanathan Literary Society, 4; Senior Superlative.

## HENRY ISLEY RIDENHOUR

COOLEEMEE, N. C.

A.B.

Brevard College, 1, 2; Akrothian Literary Society, 3; Band, 3, 4; Footlighters, 3; Ministerial Association, 3, 4; ZENITH Business Staff, 3, 4.

## JAMES SCOTTEN

THOMASVILLE, N. C.

B.S. in Business Administration

Engineers Club, 1, 2, 3, 4; Baseball, 1, 2, 3, 4; Band, 1, 2, 3.

## FANNIE LOUISE POE

SILER CITY, N. C.

A.B.

W. C. U. N. C., 1, 2; I. R. C., 3; Footlighters, 3, 4; Treasurer, 4; Nikanathan Literary Society, 3, 4; Future Teachers, 4; Treasurer, 4; W. A. A., 4.

## GERALDINE MADISON RASH

UNION GROVE, N. C.

A.B.

*Sigma Alpha Phi*

Dormitory Student Council, 3, 4; Secretary, 3; President, 4; Nikanathan Literary Society, 1, 2, 3, 4; Secretary, 2; Vice-President, 3; A Capella Choir, 3, 4; Secretary, 3; Treasurer, 3; W. A. A., 1, 2, 3; Christian Endeavor, 1, 2, 3, 4; Pianist, 2, 3, 4; Religious Council, 3, 4; Secretary-Treasurer, 4; Lighted Lamp, 3, 4; Who's Who, 4; Honor Roll, 1, 2, 3, 4; Footlighters, 1, 2, 3, 4; Secretary, 2, 3; I. R. C., 1, 2, 3; Secretary, 2, 3; Future Teachers Club, 3, 4; Vice-President, 4; Senior Superlative.

## THEODORE WILLIAM SCHUMACHER

QUEEN'S VILLAGE, N. Y.

B.S. in Business Administration

*Iota Tau Kappa*

I. R. C., 2; *Hi-Po*, 2; Tennis Manager, 2; Thalean Literary Society, 2, 3; President, 3; Dormitory Council, 3; Three Year Student.

## FRANCIS DURHAM SCRUGGS

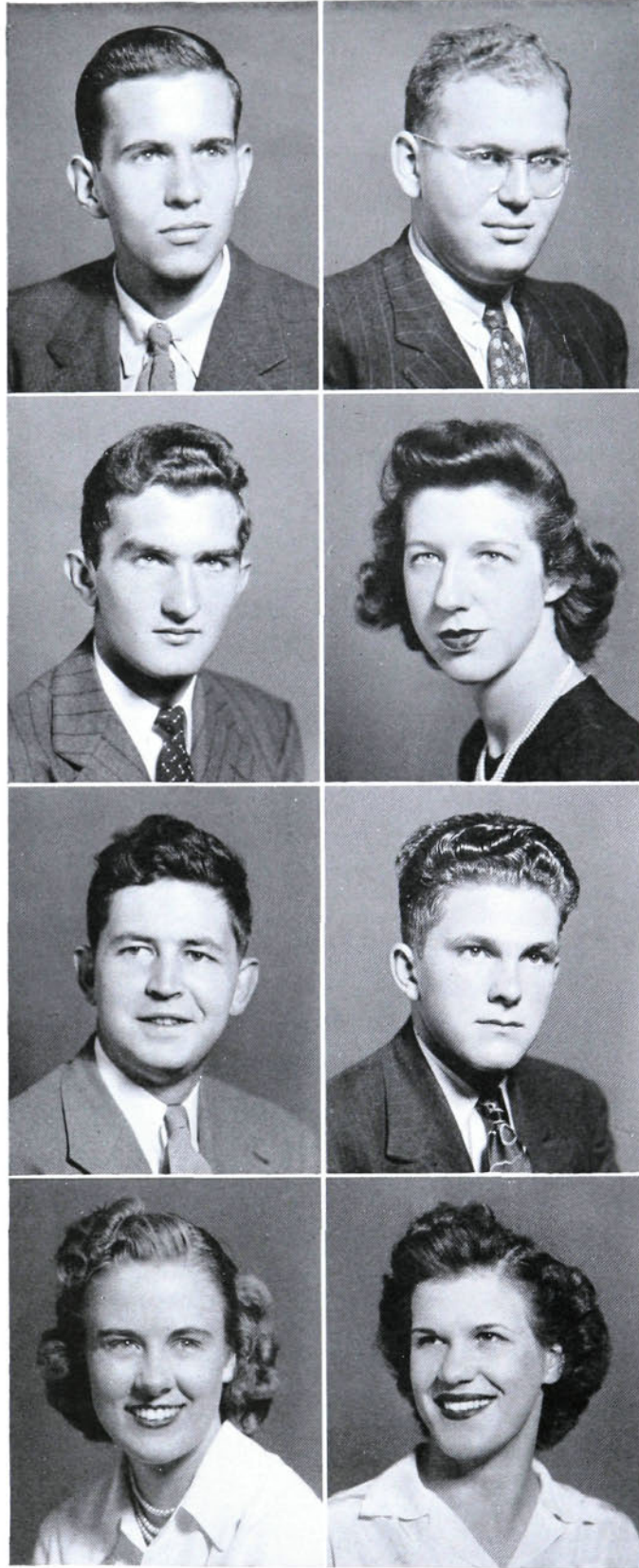
HIGH POINT, N. C.

B.S. in Home Economics

*Alpha Theta Psi*

Artemesian Literary Society, 1, 2, 3, 4; Modern Priscilla Club, 1, 2, 3, 4; ZENITH, 4; A Capella Choir, 4.





H P C



# THE SENIOR CLASS

CLAYTON S. SECHLER

KANNAPOLIS, N. C.

B.S.

Engineers Club, 1, 2, 3, 4.

EMMANUEL SEIFE

BROOKLYN, N. Y.

A.B. in Science

*Hi-Po*, 3, 4.

JOE E. SHEETS

HINTON, W. VA.

B.S.

*Delta Alpha Epsilon*

Band, 1, 2, 3, 4; Akrothinian Literary Society, 1, 2; *Hi-Po*, 1, 2; ZENITH Business Staff, 4.

MARY ALDERMAN SMITH

HIGH POINT, N. C.

A.B.

W. C. U. N. C., 1; Artemesian Literary Society, 2, 3, 4; I. R. C., 2; *Hi-Po*, 2; W. A. A., 2, 3, 4.

OTIS DEWEY SMITH

ADVANCE, N. C.

A.B.

Pfeiffer Junior College, 1, 2; Thalean Literary Society, 3, 4, Secretary, 4; Ministerial Association, 4.

ELLIS B. SUTTON

MOUNT OLIVE, N. C.

A.B.

IRIS THACKER

HIGH POINT, N. C.

A.B.

Greensboro College, 1; I. R. C., 2; Artemesian Literary Society, 2, 3, 4; *Hi-Po*, 2, 3; A Capella Choir, 3, 4, Secretary-Treasurer, 4; ZENITH, 3, 4, Assistant Editor, 3, Editor, 4; College Marshal, 3; Who's Who, 4; W. A. A., 2, 3, 4; Honor Roll, 2, 3, 4.

MARY ALICE THAYER

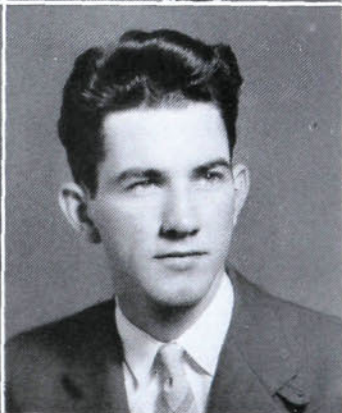
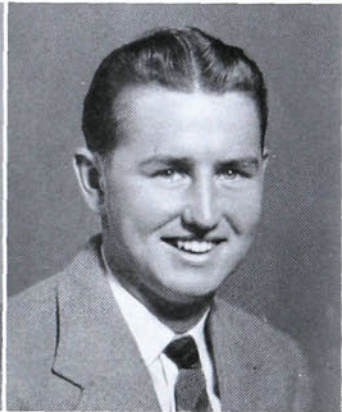
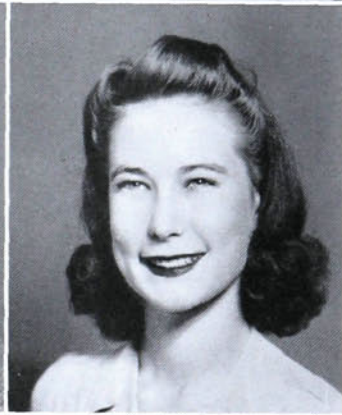
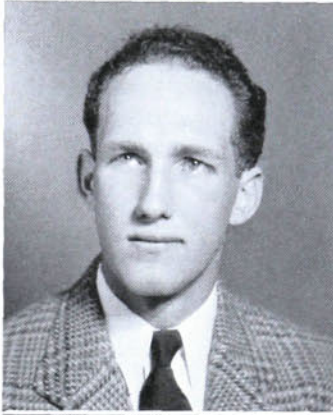
HIGH POINT, N. C.

B.S. in Physical Education

*Alpha Theta Psi*

University of Maryland, 1, 2; W. A. A., 2, 3, 4; Cheerleader, 3; Day Student Council, 3, 4, President, 4; Student Government, 4; Social Committee, 4; Honor Roll, 2, 3, 4; Senior Superlative.





H P C



# THE SENIOR CLASS

WILLIAM BLAINE THOMPSON

WINSTON-SALEM, N. C.

B.S. in Business Administration

*Delta Alpha Epsilon*

Brevard College, 1, 2.

MARY MARGARET TOWNSEND

CLARKTON, N. C.

A.B.

W. A. A., 1, 2, 3, 4; I. R. C., 1, 2; Future Teachers, 3, 4; Nikanathan Literary Society, 1, 2, 3, 4; *Hi-Po*, 3, 4; ZENITH, 3, 4; Assistant Editor, 4; Honor Roll, 1, 2, 3, 4; Foot-lighters, 3, 4.

HENRY C. VANBYLEVELT

NEW YORK, N. Y.

A.B.

A Capella Choir, 1; I. R. C., 1, 2; Inter-collegiate Table Tennis, 2; Akrothinian Literary Society, 2, 3; Soccer Team, 2, 3, 4; Basketball, 3, 4; Future Teachers, 4; Tennis Team, 4; Square Dance Club, 4.

CHARLOTTE MAURICE VARNER

FORT MYERS, FLA.

A.B.

Nikanthan Literary Society, 1, 2, 3, 4; W. A. A., 1, 2, 3, 4; Cheerleader, 3, 4; Foot-lighters, 1, 2, 3, 4; A Capella Choir, 1, 2, 3, 4; Future Teachers, 4.

DAVID M. WEATHERLY

BURLINGTON, N. C.

B.S. in Chemical Engineering

Engineers Club, 1, 2, 3, 4; Soccer, 1, 2, 3, 4.

GEORGE C. WELBORN

THOMASVILLE, N. C.

B.S. in Business Administration

*Delta Alpha Epsilon*

Basketball, 1, 2; Tennis, 2, 3, 4.

WILLIAM HOWARD WEST

YADKINVILLE, N. C.

A.B.

Mars Hill College, 1, 2.

HARLEY MORRISON WILLIAMS

HIGH POINT, N. C.

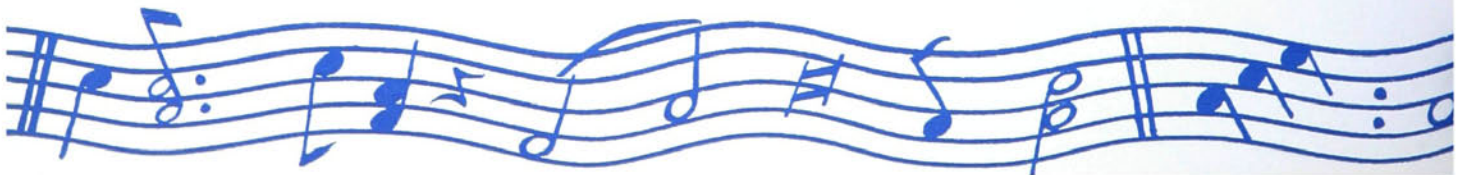
A.B.

Wofford College, 1, 2; Student Council, 4.



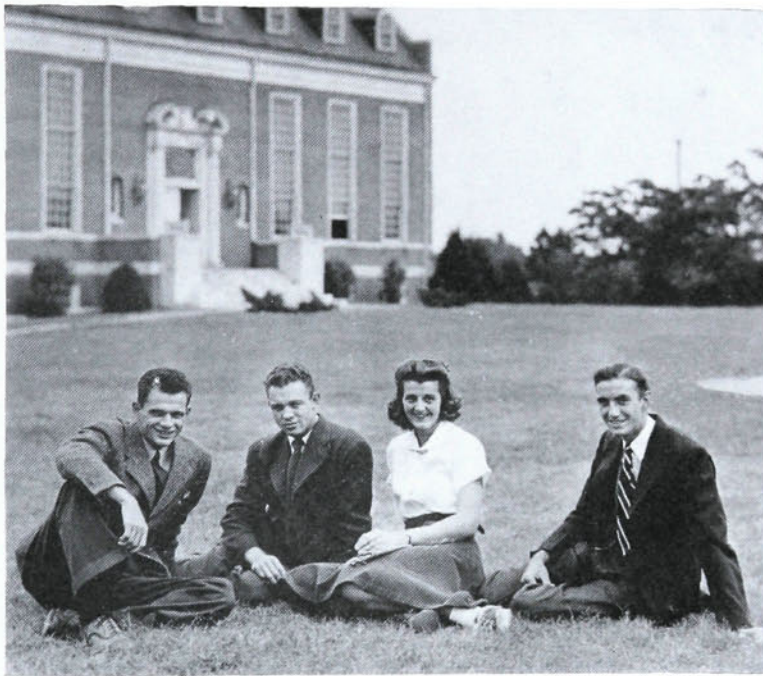


. . . to the Juniors, inspirators of "Sadie Hawkins Day,"  
a class with fine school spirit and wonderful possibilities,  
we give way. . . .





# JUNIOR CLASS

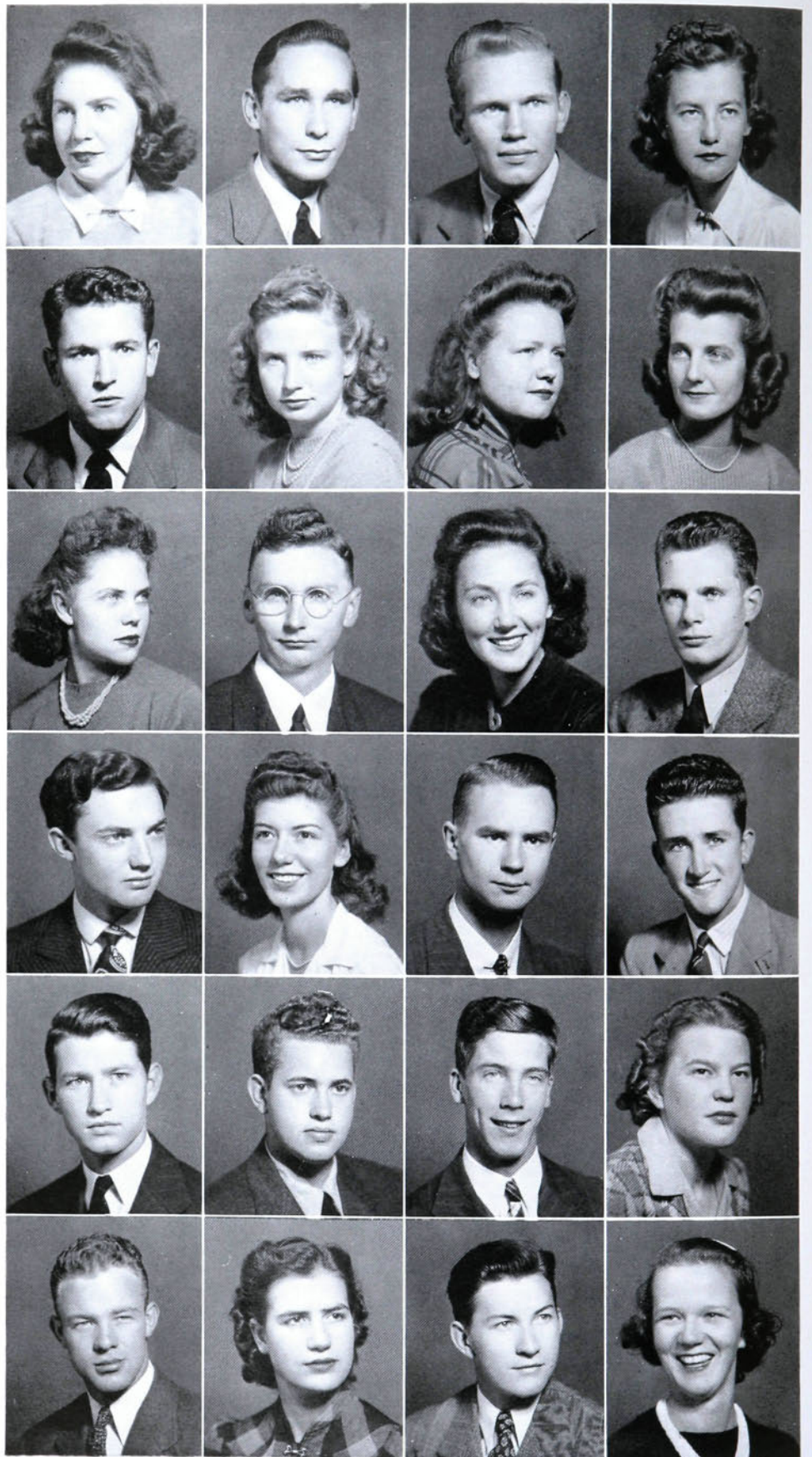


DEMMY, GRISWALD, CROWDER, HENDERSON

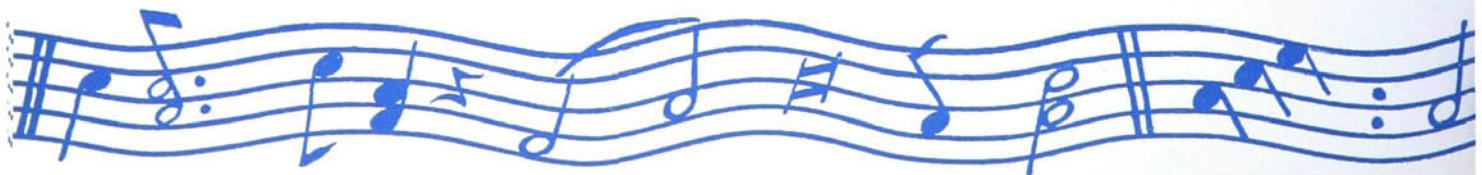
## OFFICERS

GEORGE DEMMY . . . . .	<i>President</i>
BILLY HENDERON . . . . .	<i>Vice-President</i>
GENEVA CROWDER . . . . .	<i>Secretary</i>
ARTHUR GRISWALD . . . . .	<i>Treasurer</i>





H P C



*First Row*

MARY LILLIAN ANDREWS . . . . . Asheboro, North Carolina  
CHESTER BELLAMY . . . . . Enfield, North Carolina  
ALVIN BOLES . . . . . High Point, North Carolina  
MARY LEE CANTRELL . . . . . High Point, North Carolina

*Second Row*

DOUGLAS CASE . . . . . Erie, Pennsylvania  
FRANCES CHAPPELL . . . . . High Point, North Carolina  
EMMA LEE CRESS . . . . . High Point, North Carolina  
GENEVA CROWDER . . . . . High Point, North Carolina

*Third Row*

BETTY CUMMINS . . . . . High Point, North Carolina  
GEORGE DALTON . . . . . Lewisville, North Carolina  
JOSEPHINE DEAL . . . . . High Point, North Carolina  
GEORGE DEMMY . . . . . Erie, Pennsylvania

*Fourth Row*

JIMMIE EDWARDS . . . . . High Point, North Carolina  
ANNA ELLISON . . . . . High Point, North Carolina  
EVERETT FAULKNER . . . . . Asheboro, North Carolina  
LEROY FOSTER . . . . . Melbourne, Florida

*Fifth Row*

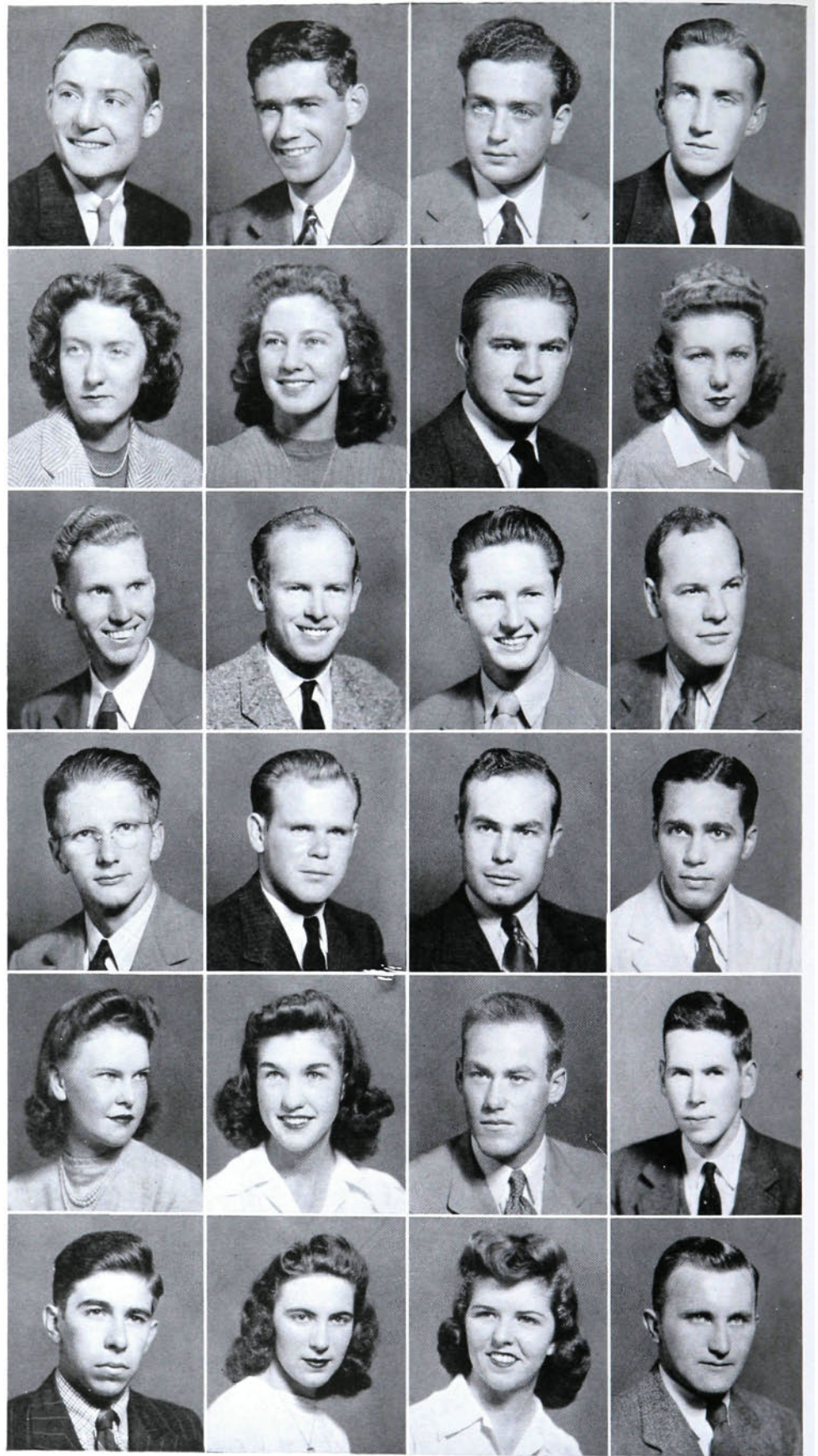
ROLAND GARMON . . . . . High Point, North Carolina  
EMERY GIBSON . . . . . High Point, North Carolina  
BILL GOSSARD . . . . . Elizabeth City, North Carolina  
RUTH GRIFFITH . . . . . High Point, North Carolina

*Sixth Row*

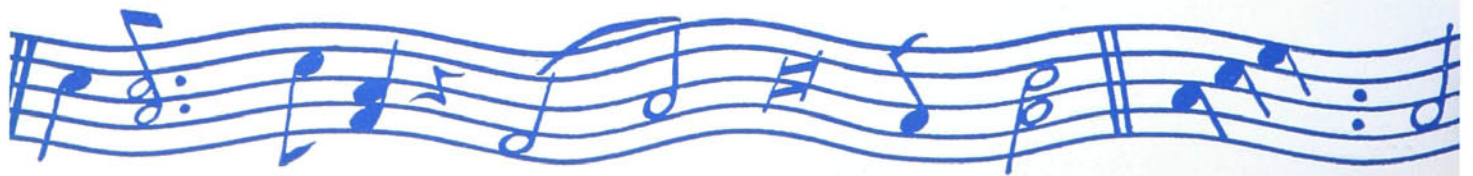
ARTHUR GRISWALD . . . . . High Point, North Carolina  
WILLIE HARRELSON . . . . . Cherryville, North Carolina  
EMMETT HARTNETT . . . . . Johnstown, Pennsylvania  
WANDA HARVILLE . . . . . High Point, North Carolina

# THE JUNIOR CLASS





H P C



*First Row*

HARRY LEE HAUSER . . . . . High Point, North Carolina  
ALBERT HELLER . . . . . West New York, New Jersey  
JOSEPH HELMREICH . . . . . Bronx, New York  
BILLY HENDERSON . . . . . Saxapahaw, North Carolina

*Second Row*

MARY HOLTON . . . . . High Point, North Carolina  
ALICE HONBARRIER . . . . . Salisbury, North Carolina  
JACK HOUTS . . . . . Spray, North Carolina  
KATHLEEN HOWARD . . . . . Winston-Salem, North Carolina

*Third Row*

WILLIAM HUTCHINS . . . . . High Point, North Carolina  
JESSE JOHNSON . . . . . Siler City, North Carolina  
BAYNE KEEVER . . . . . High Point, North Carolina  
ROBERT KIRCHGESSNER . . . . . Jersey City, New Jersey

*Fourth Row*

J. WADE KOONTZ . . . . . High Point, North Carolina  
JAMES LOWDER . . . . . Cortelyou, Alabama  
JOHN LOWDER . . . . . Mockville, North Carolina  
SEBASTIAN MARIN . . . . . San Juan, Puerto Rico

*Fifth Row*

HAZEL MATTHEWS . . . . . Garland, North Carolina  
MARTHA GREY MICKEY . . . . . Winston-Salem, North Carolina  
HENRY MINER . . . . . Bellemore, New York  
JAMES McDUFFIE . . . . . Candor, North Carolina

*Sixth Row*

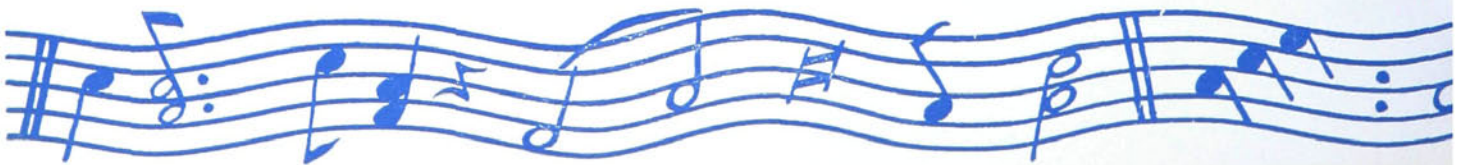
LEO PAPPAS . . . . . Brooklyn, New York  
MARIE PARKER . . . . . Dobson, North Carolina  
ZELMA PARNELL . . . . . High Point, North Carolina  
JOE PETACK . . . . . Erie, Pennsylvania

# THE JUNIOR CLASS





H P C



*First Row*

DORIS POINDEXTER . . . . . Winston-Salem, North Carolina  
DOROTHY PRESNELL . . . . . Asheboro, North Carolina  
PAULINE ROACH . . . . . Erlanger, North Carolina  
FAY ROBERTSON . . . . . Advance, North Carolina

*Second Row*

NATALIE ROSEN . . . . . High Point, North Carolina  
BETTY RUSSELL . . . . . Flushing, New York  
RONDA SEBASTIAN . . . . . High Point, North Carolina  
DARRELL SECHREST . . . . . High Point, North Carolina

*Third Row*

ARNOL SETZER . . . . . Winston-Salem, North Carolina  
DORIS SETZER . . . . . Winston-Salem, North Carolina  
DAN SIDES . . . . . Winston-Salem, North Carolina  
LOUIS SOSCIA . . . . . Brooklyn, New York

*Fourth Row*

SAM TAYLOR . . . . . High Point, North Carolina  
RUTH THAYER . . . . . High Point, North Carolina  
ROBERT TRUESDELL . . . . . High Point, North Carolina  
ROGER TUCKER . . . . . Lawsonville, North Carolina

*Fifth Row*

GEORGE VANGUILDER . . . . . Lynbrook, New York  
HOWARD VEACH . . . . . Thomasville, North Carolina  
LAWRENCE WALKER . . . . . Winston-Salem, North Carolina  
JULE WARREN . . . . . Burlington, North Carolina

*Sixth Row*

FRANCIS WASHBURN . . . . . Lexington, North Carolina  
BILL WELBORNE . . . . . Trinity, North Carolina  
NINA WHITAKER . . . . . Enfield, North Carolina  
ROBERT WILLIAMS . . . . . Rocky Mount, North Carolina

# THE JUNIOR CLASS





# H P C

ELLIOTT WYNNE . . . . . Williamston, North Carolina

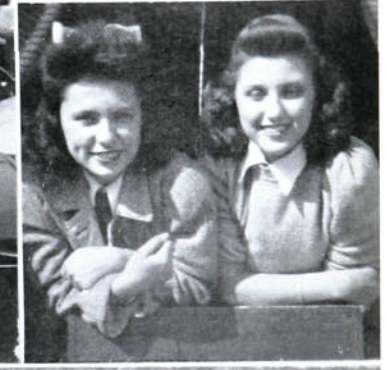
CAROLINE YORK . . . . . High Point, North Carolina



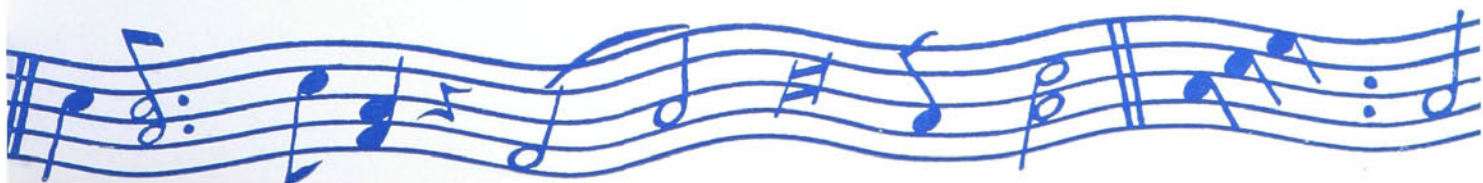
## THE JUNIOR CLASS







# JUNIOR JAMS





. . . to the Sophs, who aren't as green as they once were,  
and to the Frosh who will soon be Sophs. . . .



# SOPHOMORE CLASS



MAXWELL, SIFFORD, GORMAN, LIPTAK

## OFFICERS

HARDY L. MAXWELL . . . . .	<i>President</i>
HENRY LIPTAK . . . . .	<i>Vice-President</i>
BILL GORMAN . . . . .	<i>Treasurer</i>
PATSY SIFFORD . . . . .	<i>Secretary</i>





# SOPHOMORE CLASS . .

MILDRED ALLEN  
 JESSIE BAITY  
 CONNIE BALDWIN  
 FRANCES BINGHAM  
 DORIS BUNDY  
 HELEN CAMPBELL  
 MARGUERITE CAMPBELL  
 ELOISE CECIL  
 NAN CLAPP  
 FRANCES CLINARD  
 ELLA STUART COX  
 KATHERINE CRANFORD  
 WILMA FARABEE  
 ELLA NELL FLETCHER  
 MARTHA HAMM

NELL HARTMAN  
 CLARICE HOOVER  
 HELEN HORN  
 RACHEL HUNT  
 MILDRED JONES  
 EVELYN KEARNS  
 JACQUELINE KENNEDY  
 ELA KINSEY  
 DORIS KOONCE  
 JOAN KOSBERG  
 BONNIE LEWIS  
 MULL LUTZ  
 BARBARA MATHEWS  
 LILLIE MAY MOORE  
 GRACE MCKAUGHN

ADA OLIVER  
 HAZEL PASCHAL  
 NELL PRICE  
 JUDY PRIMM  
 RAMONA REDMAN  
 ARIANA ROBERTS  
 DONREE SETZER  
 PATSY SIFFORD  
 LULU SMITH  
 MARIE SNIDER  
 CLAUDIA STRANGE  
 GENE THACKER  
 ANNIE MAY WAGONER  
 ETHEL WALL  
 MARY WARREN

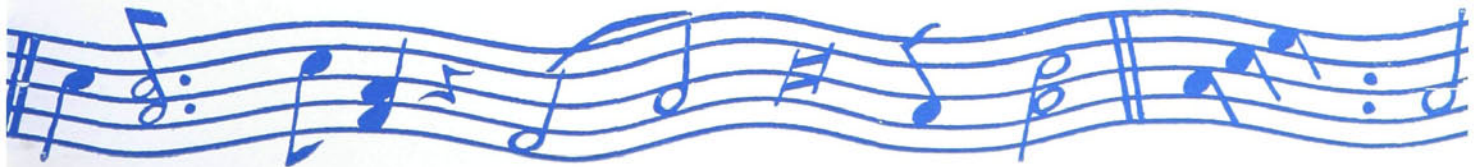




SUE WOODRUFF  
 DOROTHY LEE USHER  
 JANIS USHER  
 JACK ASTRELLA  
 M. C. AUMAN  
 VERNON BODENHEIMER  
 FRANCIS BOWEN  
 DOUGLAS CASE  
 EUGENE CONNELLY  
 TALMADGE COLE  
 KENNETH CROUSE  
 KENT DENNIS  
 CHARLES EDWARDS  
 CLIFTON EVANS  
 TOMMY ELLIOTT

JAMES FINK  
 STANLEY FREEDMAN  
 RAYMON FREEMAN  
 FRANCIS FLETCHER  
 HUGH GOERNER  
 WILLIAM GORMAN  
 EDWIN HEATH  
 JAMES HEPLER  
 GEORGE HIGHSMITH  
 BILL JARRETT  
 CLYDE JOHNSON  
 FRED KAPPELMAN  
 ROBERT KIRCHGESSNER  
 JOE LEPKOWSKI  
 WAYNE LINDLEY  
 ROWLAND V. LONG  
 JOHN MATTHEWS  
 H. L. MAXWELL  
 HAROLD L. MENDENHALL  
 DUNCAN MONROE

GILMER MYERS  
 HARDING MCKINNEY  
 RUSSELL NIXON  
 NEECE OSBORN  
 GLENN PAYNE  
 KENNETH PAYNE  
 JOE PETACK  
 JOHN PERRY  
 ALBERT D. RIDGE  
 WILLIAM ROBBINS  
 ROBERT SHIPP  
 WALTER SINK  
 DON SWITEK  
 JOHN STASULLI  
 MARTIN SPINELLI  
 VIRGIL STEELY  
 DAN SIDES  
 ZANE FURR THOMPSON  
 SIDNEY UNDERWOOD  
 RALPH YOW



# UNCLASSIFIED STUDENTS

## SPECIAL

MARY SUE BRIGGS	ERNEST R. ANDERSON	ELMER FREEMAN
RUTH CAVE	FRANCIS COOPER	RODNEY SNOW, JR.
MRS. ERLENE PERRY	LEE DAVIS	THOMAS VANDERFORD
WILLIAM FOSITER		E. S. WELBORN, JR.

## MUSIC

Mrs. J. H. ALLRED	MARGARET KERNODLE	ELEANOR YOUNTS
MRS. CHARLOTTE M. AMOS	WILLA LEWIS	JIMMIE ALLRED
ANNIE LOUISE BROWN	ELIZABETH MONROE	KENNETH ALLEN
MRS. MARGARET FLEISCHMANN	RUTH MENDENHALL	OLIN BLICKENSERFER
JESSE FRAZIER	GENEVA MORRISON	CARL CRONSTEDT
EMILY HERRING	ALICE OVERMAN	THOMAS DODAMEAD
SARA HEAD	MRS. ERNESTINE STRICKLAND	BOBBY GALE
DOROTHY HOSKINS	VERNA WILLIAMS	J. H. HENSLEY
MURIEL HILTON	M. WILLARD	ARON LOWE
KATHLEEN HINSHAW	VERA WHITLOCK	BRECK RICHARDSON
NELL HUMPHREYS	HAZEL WRIGHT	JACK SLANE
CLARA JOHNSTON		GEDDIE STRICKLAND, JR.



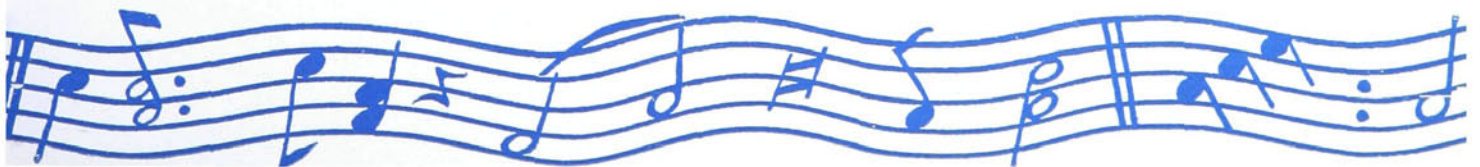
# FRESHMAN CLASS



BRADY, ANDERSON, PARKER, NELSON, NOSTRAND

## OFFICERS

BILL ANDERSON	.....	<i>President</i>
BETTY BRADY	.....	<i>Vice-President</i>
GEORGE NOSTRAND	.....	<i>Treasurer</i>
VELMA NELSON	.....	<i>Secretary</i>
RUBY PARKER	.....	<i>Historian</i>





# FRESHMAN CLASS

DOROTHY ALEXANDER  
 GRACE ALEXANDER  
 EDITH BAILEY  
 IMOGENE BECKER  
 CLARA BRACKETT  
 BETTY BRADY  
 IRIS BURTON  
 EVELYN CAUDLE  
 DOROTHY CHAMBERLAIN  
 LOIS CHAMBERLAIN  
 KATHLEEN CHEEK  
 HELEN CLARK  
 SALLY CLARK  
 MARY ANN COE  
 ANNA COOKE  
 MARY COIN  
 RUTH CRAVEN  
 KATHRYN CROSS  
 MYRTLE DAVIS  
 MARION DOGGETT  
 FRANCES EDWARDS  
 CARLENE ELLISON  
 MARGARET ELLISON  
 BETH EDELSTEIN

ENOLA FLOWERS  
 FRANCES FOSTER  
 LUCY FUTRELLE  
 MARCENA GERSTUNG  
 EDITH GLIDEWELL  
 BETTE GOSSARD  
 JEANNE GRAFF  
 MELBA GREGORY  
 FRANCES HAMILTON  
 GARNETT HINSHAW  
 VIRGINIA HUDGINS  
 RUTH HALL  
 ALICE INGOLD  
 NANCY ISENHOUR  
 FELCIA JOHNSON  
 NANCY JONES  
 JEWELL KEARNS  
 CONSTANCE KLEIN  
 BETTY DEAN KNOX  
 DOROTHY L. KOONTZ  
 MARGUERITE KOONTZ  
 LUCILE LANIER  
 DALLIE LINER  
 BETTY LOWY

NAE NELL MELTON  
 HELEN MEREDITH  
 IRNA MILLER  
 AGNES MINNIS  
 VONCILE MINNIS  
 MARGIE MORGAN  
 JUANITA MORGAN  
 MIRIAM MCCALL  
 VELMA NELSON  
 DORIS NEWMAN  
 ETHELE NORTON  
 ANITA PACE  
 RUBY PARKER  
 ARTIE BELLE PIRTLE  
 LESSIE PRICE  
 WANONA RASH  
 LENA SALE  
 MYRA SCOTT  
 LILLIAN SELF  
 DOROTHY SHULL  
 BETTY SMITH  
 DORIS SNYDER  
 ANNIE FRANK STOCKARD  
 WINCEY IRENE STROTHER

DAISY SURRATT  
 MYRA TAUB  
 DAMARIS TAUSSIG  
 FAYE THAYER  
 FRANCES THIGPEN  
 MARIANNA TRICE  
 MARTHA VARNER  
 MIMI WAGGER  
 MILDRED WAGONER  
 FLORENCE WALKER  
 RUBY WALL  
 PAULINE WARLICK  
 SARAH WARREN  
 EMILY WATERS  
 DOROTHY WAY  
 ELAINE WELBORN  
 BETTY WELCH  
 BLANCHE WHITE  
 IRIS WHITE  
 SUE WHITE  
 MARIE WILLIAMS  
 DOROTHY WILLIAMS  
 DAPHNE WILLIAMSON  
 MARY JO WILSON





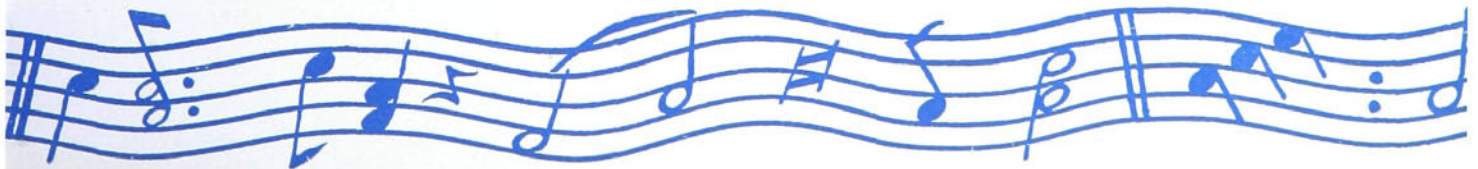


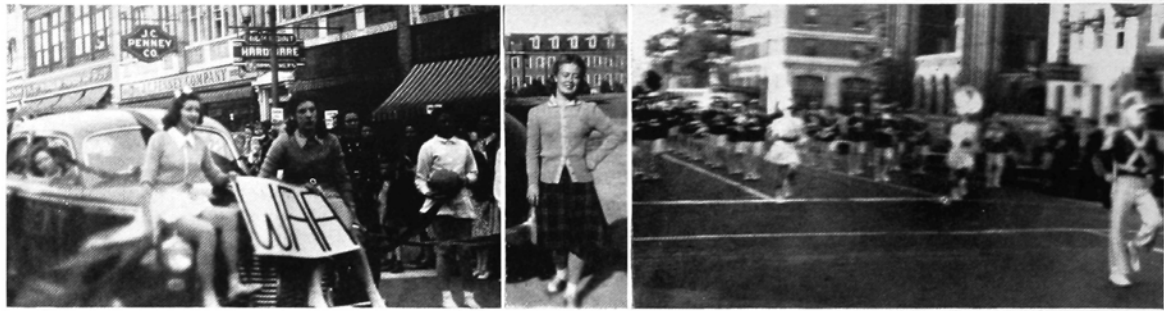
DANIEL ALLEN  
 JAMES AUMAN  
 WILLIAM ANDERSON  
 WILLIAM Q. ANDERSON  
 HOMER BARRETT  
 WILLIAM BEAVER  
 NIXON BINGHAM  
 OSWALD BLATT  
 DAVID BOULDWIN  
 ORIN BOYLES  
 WM. FRANKLIN BOYLES  
 CHARLES BROWN  
 JAMES L. BROWN  
 PAUL BROWN  
 CHARLES BUCHANAN  
 TOM BEASLEY  
 WILLIAM CRAVEN  
 WAYNE CAGLE  
 JACK CECIL  
 STANTON CECIL  
 HENRY CHILES  
 OLLIE CLARK  
 HEBRON COBLE

CHARLES COFFEY  
 WADE COGGINS  
 EUGENE COLLETTE  
 GEORGE COMPTON  
 BILLY CONNER  
 MAURICE COUTURIER  
 JAMES ROBERT DANIELS  
 WILLIAM DAVIS  
 RICHARD DiTULLIO  
 HAROLD DIXON  
 ALEX DRAKOS  
 PERRY ENGLAND  
 JAMES FLANAGAN  
 JAMES FOWLER  
 DONALD FREEMAN  
 BILL GANTT  
 RICHARD GINTHER  
 WILLIAM HALL  
 GEORGE HARPER  
 JAMES HARRIS  
 TALMADGE HINKLE  
 GEORGE HUMPHREYS  
 RALEIGH HUNT

JOSEPH HURSEY  
 ROBERT HUTCHENS  
 CARL JOHNSON  
 JAMES KENNERLY  
 GEORGE KNIGHT  
 EDWIN KNOBLOCK  
 BILL LANGLEY  
 WILLIAM LACKEY  
 KELLY LAWSON  
 ROY LEFLER  
 ROBERT LILLY  
 HENRY LINTHICUM  
 HENRY LIPTAK  
 ROBERT LLOYD  
 ROBERT LUMSDEN  
 CHARLES MATHENY  
 JESSE MINNIS  
 FUTRELLE MOORE  
 FLEMING MORAN  
 ROBERT MCGINN  
 ROBERT MCCALL  
 DONALD MCCLURG  
 CHARLES McMURRAY  
 GEORGE NOSTRAND  
 CHARLES NOELL  
 GUY OSBORNE  
 JOHN PEELE  
 GARNETT POLLOCK

ROBERT PORTER  
 WILLIAM PRICE  
 TED PAPPAS  
 RAYMOND RIDER  
 JAMES ROSS  
 WALTER SMITH  
 HOWARD SNOW  
 EUGENE STALEY  
 BLANCHE STAMEY  
 HENRY STROUD  
 FRANCIS TERRY  
 JAMES TERRY  
 ALFRED TOKER  
 ROGER TUCKER  
 ROBERT VAUGHAN  
 RAYMOND VUNCANNON  
 LINDSAY WEAVER  
 DARRELL WELBORN  
 DON WELBORN  
 RUSSELL WILLIARD  
 EUGENE WILEY  
 JOHN WILSON  
 WOODROW WILSON  
 HERMAN WINFREE  
 GROVER WOOD  
 JOHN YORK  
 LUTHER J. YOW







F E A T U R E S





ROBERT WILLIAMS  
*Chief*

ROLAND GARMON  
ZELMA PARNELL  
DOROTHY PRESNELL

BETTY RUSSELL  
DARRELL SECHREST

SAM TAYLOR  
JULE WARREN  
ELLIOTT WYNNE



# COLLEGE MARSHALS



*Miss Virginia Hunt*

SENIOR SPONSOR

# Miss Doris Poindexter

JUNIOR SPONSOR



MISS HIGH POINT COLLEGE

Selected by Kay Kyser, our North Carolina Maestro



*Miss Kathleen Cheek*

SOPHOMORE SPONSOR

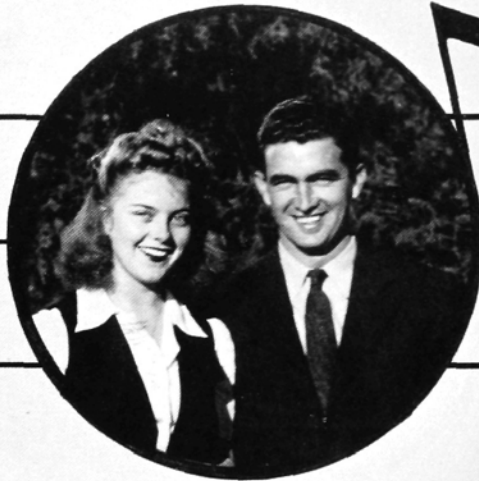


*Miss Dorothy Alexander*

FRESHMAN SPONSOR



# KEY NOTES . . .



## THE BEST LOOKING

MARJORIE PUTNAM  
ELVIN LEWIS

## THE MOST FRIENDLY

JERRY RASH  
RUSSELL HUGHES

## THE MOST POPULAR

GRACE BIVINS  
JERRY COUNIHAN

## THE MOST INTELLECTUAL

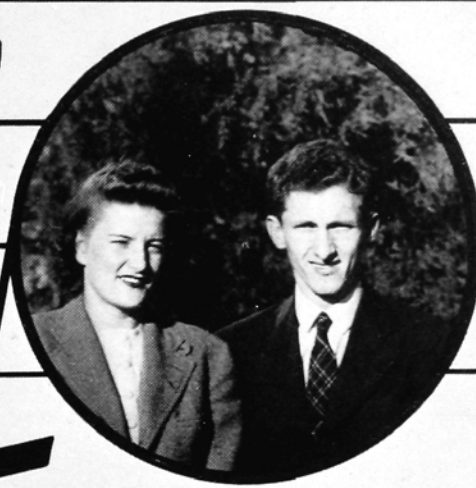
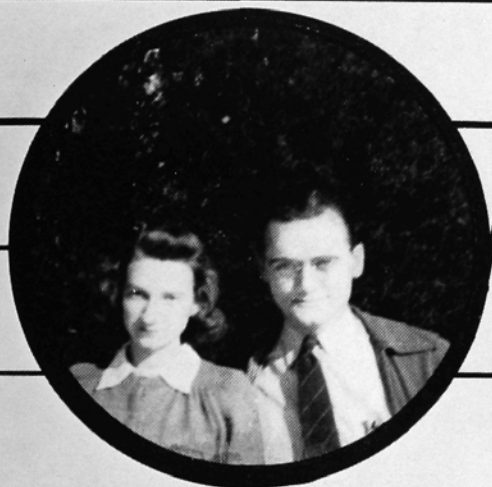
IRENE PARKER  
FRANK HARRIS

THE MOST ORIGINAL

RUTH GOOD  
DARRELL ALLRED

THE MOST VERSATILE

GRACE BIVINS  
JERRY COUNIHAN



THE BEST SPORTS

MARY ALICE THAYER  
RUSSELL HUGHES

THE MOST ATHLETIC

"TOOTSIE" ELKINS  
HILLIARD NANCE

# SENIOR SUPERLATIVES

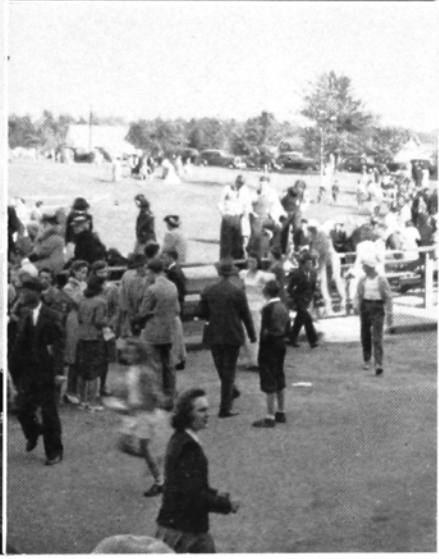
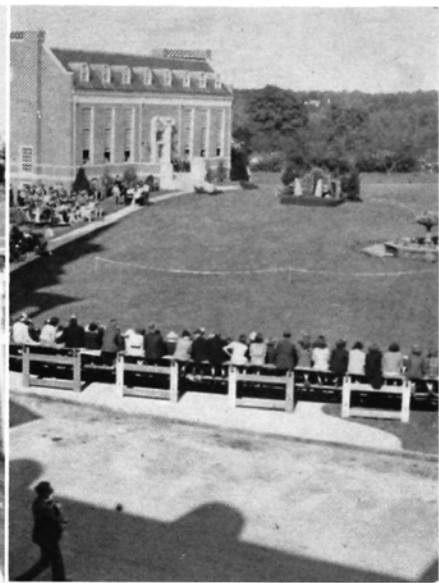


*Miss Virginia Hunt*

MAY QUEEN



MAY  
DAY  
1941



# To The Colors! . . .



. . . of December eighth, when the United States entered the world issue to defend her shores from attackers. . . .

. . . to the boys who left school to give their all to their country. . . .

. . . to the country we love, among whose hills and plains we have enjoyed freedom. . . .

. . . and to that same cause of freedom for which we are fighting—we dedicate this page. . . .



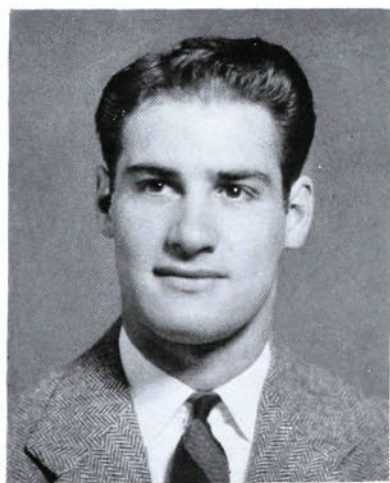
ORGANIZATIONS







## STUDENT GOVERNMENT



FRANK FERNANDEZ  
*President Student Body*

Regular Monday night meetings mark the activities of this group of students. We picked them to make our laws, and, as always follows wherever there are laws to break, to inflict punishments. They were fine leaders and deserve the praise that is given them by membership in the Student Council. Frank Fernandez, handsome and capable, headed the school as president with the splendid helping hand of Jack Houts as vice-president. To them go the thanks of the entire student body for their inspiring leadership during the year.

Two representatives from each class and the presidents of the dormitory and day student councils complete the roll call. In the fall, the Student Government sponsored a formal dinner and dance for the student body. Oh, what fun. . . . In numerous other instances the members, individually and collectively, promote a better social life on the campus.





**DORMITORY  
GOVERNMENT**

GERRY RASH  
BETTY RUSSELL  
VIRGINIA HUNT  
JULE WARREN  
PATSY SIFFORD

JEROME COUNIHAN  
TED SCHUMACHER  
BILLY PATTERSON  
HENRY MINER  
BILLY HENDERSON

**DAY STUDENT  
GOVERNMENT**

MARY ALICE THAYER  
JEWELL CAMPBELL  
ELOISE CECIL  
RUTH GRIFFITH  
KATHRYN CROSS

BANKS CHILTON  
SAM TAYLOR  
DON SWITEK  
HARLEY WILLIAMS  
BILL HALL



# PAN-HELLENIC COUNCIL

PAUL OWEN . . . . . *Permanent Chairman*

GRACE BIVINS . . . . . *Secretary*

## REPRESENTATIVES

### *Alpha Theta Psi*

RUTH GOOD  
MRS. ALICE PAIGE WHITE

### *Epsilon Eta Phi*

FRANK FERNANDEZ  
MR. J. H. MOURANE

### *Sigma Alpha Phi*

VIRGINIA HUNT  
MISS MABEL WARLICK

### *Iota Tau Kappa*

JEROME COUNIHAN  
MR. A. C. LOVELACE

### *Delta Alpha Epsilon*

DARRELL ALLRED  
PROF. J. H. ALLRED

### *Theta Phi*

GRACE BIVINS  
MISS LOUISE ADAMS

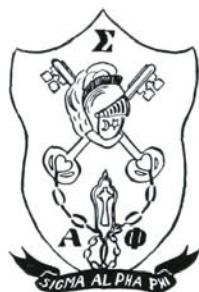
The purpose of the Pan-Hellenic Council is the active supervision of all the activities of the various social clubs on the campus. At regular meetings throughout the year they place special emphasis upon the promotion of better relationships among these and a clarification of the rules under which they must operate. Paul Owen, the permanent chairman of the group from the faculty, has led the Pan-Hellenic Council in their most successful and useful of years. Their work included the study of the constitution of the Council in order that it might meet present needs and the promotion of a spirit of friendliness and cooperation as well as the usual rivalry.





#### ROLL

FRANCES CHAPPELL  
VIRGINIA HUNT  
GERRY RASH  
JOSEPHINE DEAL  
CAROLINE YORK  
JACKIE KENNEDY  
RAMONA REDMAN  
BARBARA MATHEWS  
PATSY SIFFORD  
BETTY CUMMINS  
WANDA HARVILLE  
RONDA SEBASTIAN  
KATHLEEN HOWARD  
BONNIE LEWIS



# SIGMA ALPHA PHI

#### HONORARY MEMBERS

MRS. P. E. LINDLEY  
MISS VERA IDOL  
MISS VEREL WARD



# IOTA TAU KAPPA

## ROLL

JACK ASTRELLA  
JERRY COUNIHAN  
BANKS EVANS  
CLIFTON EVANS  
RAYMOND FREEMAN  
ELVIN LEWIS  
LOUIS SOSCIA  
TED SCHUMACHER



## HONORARY MEMBERS

DR. C. R. HINSHAW  
DR. P. E. LINDLEY  
O. A. KIRKMAN  
A. C. LOVELACE





### ROLL

HARRIETT BERRY  
 GRACE BIVINS  
 FLORENCE ELKINS  
 ANNA LEE ELLISON  
 AUDREY GUTHRIE  
 MARY HOLTON  
 ZELMA PARNELL  
 DORIS POINDEXTER  
 DOROTHY PRESNELL  
 BETTY RUSSELL  
 DORIS SETZER  
 CLAUDIA STRANGE  
 DOROTHY LEE USHER  
 JULE WARREN  
 NINA WHITAKER



### HONORARY MEMBERS

MISS LOUISE ADAMS  
 MISS PRISCILLA DEAN  
 MRS. N. M. HARRISON  
 MRS. GLENN MUSE  
 MRS. N. P. YARBOROUGH  
 MRS. C. V. YOW

# THETA PHI



FRANK FERNANDEZ  
BILL KEENE  
BILL PATTERSON  
ED GREESON  
FRED MILLS  
JAMES LOWDER  
HARDY MAXWELL  
ALVIN BOLES  
ROLAND GARMON  
DARRELL SECHREST  
C. A. WATTS

# EPSILON ETA PHI



## HONORARY MEMBERS

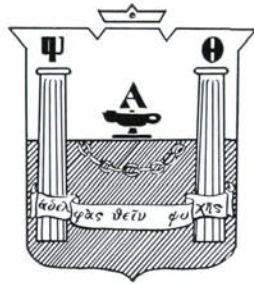
JIM McCACHREN  
DR. HILL  
J. H. MOURANE  
N. P. YARBOROUGH





### ROLL

JEWELL CAMPBELL  
 ELOISE CECIL  
 RUTH COBLE  
 WILLIE EDWARDS  
 RUTH GOOD  
 RUTH GRIFFITH  
 ANN KITCHENS  
 DORIS KOONCE  
 RUTH MAY  
 IRENE PARKER  
 JUDY PRIMM  
 FRANCES SCRUGGS  
 MARIE SNIDER  
 MARY ALICE THAYER  
 RUTH THAYER



# ALPHA THETA PSI

### HONORARY MEMBERS

MRS. S. O. PEEBLES  
 MRS. ALICE PAGE WHITE  
 MRS. C. R. HINSHAW





# DELTA ALPHA EPSILON

## ROLL

DARRELL ALLRED  
LEROY FOSTER  
BILL GORMAN  
BILL HENDERSON  
RUSSELL HUGHES  
FRED KAPPELMANN  
JIMMY MCCALL  
RUSSELL NIXON  
JOE SHEETS  
DON SWITEK  
SAM TAYLOR  
BLAINE THOMPSON  
BOB TRUESDALE  
GEORGE WELBORNE  
BOBBIE WILLIAMS  
ELLIOTT WYNNE



## HONORARY MEMBERS

MR. OLIN BLICKENSERFER  
MR. E. C. GLASGOW  
MR. J. H. ALLRED

## HONORARY SWEETHEART

ANNA KASKAS



# MUSIC NOTES .

WADE KOONTZ  
DORIS KOONCE  
ZELMA PARNELL  
BILL GOSSARD



Musical Magnets.

The choir . . . beautiful and artistic . . . a group, singing in harmony . . . working in one spirit . . . knowing that complete satisfaction of body and soul when perfection is reached . . . yes, those moments of perfection are rare, but so rich. Miss Whitlock, little but mighty . . . a hearty hand to her . . . we love her . . . so devoted to her work . . . imbued with the power to create deep enthusiasm in the choir, or any other class or group she is leading.

Chapel programs, radio broadcasts, presenting the "Messiah," the Easter Cantata . . . those were thrills we can't forget . . . those are the performances by which we are remembered and judged.

We boasted a larger choir this year . . . an influx of new Freshman voices

and new personalities for fun at rehearsals. Sam was our President for the second year. He made things "click," too, as well as Wynne, the "wit"; Bivins, the "Fourth B"; and Varner, the oldest member of the organization.

Favorite selections were "God So Loved the World," "Ballad For Americans," and the Negro Spirituals. Singing carols from the top of the Girls' Dormitory in antiphonal fashion with the Band in the tower was a novel and unforgettable experience of Yuletide joy. Other similar excursions and week-end trips consummate the year's activities of the choir.

Miss Whitlock was ably assisted in the music department this year by Miss Ernestine Fields, Mr. Blickensderfer, Mr. Riker, and Mrs. Emery.



# ... A C A P E L L A C H O I R



## *First Soprano*

DOROTHY ALEXANDER  
GRACE ALEXANDER  
FRANCES FOSTER  
BETTY GOSSARD  
ZELMA PARNELL  
LENA SALE  
CHARLOTTE VARNER

## *Second Soprano*

EDITH BAILEY  
HARRIET BERRY  
MARGUERITE KOONTZ  
VELMA NELSON  
GERALDINE RASH  
WANONA RASH  
GENE THACKER  
IRIS THACKER

## *First Tenor*

BANKS CHILTON  
MAURICE COUTURIER  
WADE KOONTZ

## *Second Tenor*

LUTHER BROWN  
EUGENE CONNELLY  
SAM TAYLOR

## *First Alto*

KATHRYN CROSS  
DORIS KOONCE  
DORIS POINDEXTER  
FRANCES SCRUGGS  
BETTY VEIGH SMITH  
NINA WHITAKER

## *Second Alto*

GRACE BIVINS  
EVELYN CAUDLE  
MARION DOGGETT  
DORIS SETZER  
ANNIE MAY WAGONER

## *First Bass*

WILLIAM GOSSARD  
JESSE JOHNSON  
BAYNE KEEVER  
EUGENE WILEY  
BOBBIE WILLIAMS  
ELLIOTT WYNNE

## *Second Bass*

OLIN BLICKENSERFER  
CHARLES COFFEY  
JACK HOUTS  
WAYNE LINDLEY

SAM TAYLOR  
*President*

HARRIET BERRY  
*Vice-President*

IRIS THACKER  
*Secretary-Treasurer*

BETTE GOSSARD  
*Librarian*



MISS VERA E. WHITLOCK  
*Director*



# THE BAND



RUSSELL HUGHES  
*Drum Major*

DOROTHY AND GRACE ALEXANDER  
*Twin Majorettes*



MR. OLIN R. BLICKENSDERFER  
*Conductor*

The High Point College Band has shown splendid development under the master hand of Mr. Olin Blickensderfer, better known to the student body as Blicky. A tribute should also be paid to the faculty adviser of this organization, Dean Lindley, whose interest and keen appreciation of the fine music his band has rendered is felt by each member of the band and the student body as a whole. In the fall and winter seasons the band is very active following the sports program of the football and basketball teams. On these occasions dressed in full uniform they present a colorful drama with the intricate drills and superb baton twirling of our drum major, Russell Hughes, and the pretty twin majorettes, Dorothy and Grace Alexander.

The band appeared on several chapel programs during the year and presented their annual concert at Christmas, of which Professor Franklin Riker, well-known music critic, has written:

"The High Point College Band proved a surprisingly good organization and acquitted itself with distinction at its winter concert. I realized that there is an unusually gifted young conductor at High Point College, Olin R. Blickensderfer, who is on his way to his mark in this field.

"He has molded together a fine body of young musicians who perform with assurance, decision, and ability. There remains that evolution of deftness and unity which comes alone with long association and practice, nevertheless I was always conscious of a band well and keenly directed, whose response to the ever varying demands of expression, nuance, dynamics and rhythm, showed alertness, and in general a keenness and crispness of attack.

"So we have a fine band growing up together which will ere long thrill us with its frank, clean-cut vital warmth—a band of fine boys and girls finely trained and finely expressive."



OLIN R. BLICKENSERFER . . . . . *Conductor*  
 RUSSELL HUGHES . . . . . *Drum Major*  
 DOROTHY AND GRACE ALEXANDER . . . . . *Twin Majorettes*

*Clarinet*

CLAUDIA STRANGE  
 TOM BEASLEY  
 CONSTANCE KLEIN  
 EDWARD KNIGHT  
 WAYNE LINDLEY  
 CHARLES BROWN

*Horn*

JOE SHEETS  
 BOB ANDREWS  
 RUSSELL NIXON  
 BOB INGRAM

*Trombone*

ELLIOTT WYNNE  
 JAMES DANIELS  
 DAN SIDES  
 GEORGE HIGHSMITH  
 OLLIE CLARK

*Percussion*

BOBBIE WILLIAMS  
 BOB TRUESDELL  
 DAVID BOULDIN

*Flute*

BILL GOSSARD  
 KATHERINE MOOSE

*Oboe*

CHARLES TABOR

*Alto Saxophone*

JIMMIE MCCALL  
 RUSSELL HUGHES  
 ELLA STUART COX

*Cornet*

EUGENE CONNELLY  
 EUGENE WILEY  
 CHARLES NOELL  
 LEROY FOSTER  
 ENOLA SUE FLOWERS  
 HARRY HAUSER  
 DICK SMITH

*Bass*

CHARLES MATHENY

*String Bass*

KELLY LAWSON

*Tenor Saxophone*

VIRGIL STEELY  
 DICK GINTHER  
 JOHN LOWDER

*Baritone*

JOHN WILSON  
 BILL ANDERSON

*Tympani*

SAM TAYLOR

*Glockenspiel*

ZELMA PARNELL





IRIS THACKER, *Editor*  
 DARRELL ALLRED, *Business Manager*

# THE ZENITH



## EDITORIAL STAFF

- IRIS THACKER
- MARY TOWNSEND
- DOROTHY PRESNELL
- LUTHER BROWN
- BANKS CHILTON
- CHARLES COFFEY
- RUTH GOOD
- ROBERT KIRCHGESSNER
- DORIS KOONCE
- BONNIE LEWIS
- RUTH THAYER
- LOUIS SOSCIA

## BUSINESS STAFF

- |                |               |
|----------------|---------------|
| DARRELL ALLRED | BOB TRUESDELL |
| JOE SHEETS     | LEROY FOSTER  |
| JIMMIE MCCALL  | RALPH COX     |



# THE COLLEGE ANNUAL





**BUSINESS STAFF**

RALPH YOW  
 BETTE GOSSARD  
 JAMES AUMAN

**CIRCULATION**

JOHN DAVIS  
 CHARLIE NOELL  
 ED KNOBLOCK

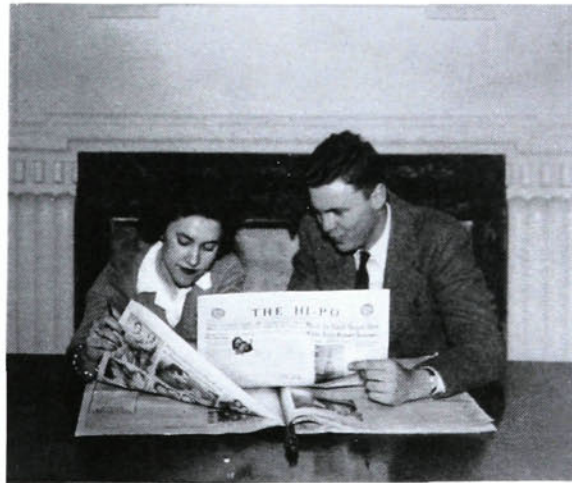
**SPORTS**

LOUIS SOSCIA  
 OSWALD BLATT  
 DONALD MCCLURG

**EDITORIAL STAFF**

IRENE PARKER	RUBY PARKER
RITH GRIFFITH	OLLIE CLARK
RUTH GOOD	RUTH MAY
MARY HOLTON	BILL GORMAN
MARTHA GRAY MICKEY	JUDY PRIMM
MARY TOWNSEND	

IRENE PARKER, *Editor*  
 RALPH YOW, *Business Manager*



•

**THE  
 HI-PO**

**THE COLLEGE NEWSPAPER**





# THALEAN LITERARY SOCIETY

## OFFICERS

TED SCHUMACHER . . . . .	<i>President</i>
BANKS CHILTON . . . . .	<i>Vice-President</i>
DEWEY SMITH . . . . .	<i>Secretary</i>
ELLIOTT WYNNE . . . . .	<i>Treasurer</i>

## ROLL

OSWALD BLATT	BILL GORMAN	CHARLES MATHENY
FRANK BOYLES	BILL GOSSARD	DONALD MCCLURG
LUTHER BROWN	BRIAN GREGORY	JACK MINNIS
HENRY CHILES	BILL HENDERSON	RUSSELL NIXON
BANKS CHILTON	TALMADGE HINKLE	CHARLIE NOELL
OLLIE CLARK	JESSE JOHNSON	DEWEY SMITH
CHARLES COFFEY	FRED KAPPELMANN	RICHARD SMITH
MAURICE COUTURIER	BOB KIRCHGESSNER	SAM TAYLOR
KENNETH CROUSE	ED KNOBLOCK	TED SCHUMACHER
JOHN DAVIS	RAY LEFLER	FRANCIS TERRY
JAMES DANIELS	WAYNE LINDLEY	JAMES TERRY
HAL DIXON	LAWRENCE LINNEMAN	EUGENE WILEY
PERRY ENGLAND	ROBERT LLOYD	G. C. WOOD, JR.
BILL GANTT	JERRY MARIN	ELLIOTT WYNNE





# NIKANTHAN LITERARY SOCIETY

## ROLL

DOROTHY ALEXANDER  
 GRACE ALEXANDER  
 MILDRED ALLEN  
 MARY ANDREWS  
 EDITH BAILEY  
 BETTY BRADY  
 GLADYS BROOKS  
 IRIS BURTON  
 HELEN CAMPBELL  
 JEWELL CAMPBELL  
 MARY LEE CANTRELL  
 EVELYN CAUDLE  
 ELOISE CECIL  
 DOROTHY CHAMBERLAIN  
 LOIS CHAMBERLAIN  
 ELMA CHAMBLISS  
 HELEN CLARK  
 FRANCES CLINARD  
 RUTH COBLE  
 ANNA MAE COOK  
 ELLA STUART COX  
 ADA RUTH CRAVEN  
 JOSEPHINE DEAL

MARIAN DOGGETT  
 FRANCES EDWARDS  
 WILMA FARABEE  
 ONETA FITZGERALD  
 ELLA NELL FLETCHER  
 ENOLA SUE FLOWERS  
 MARCENA GERSTUNG  
 HAZEL GIBSON  
 JEAN GRAFF  
 AUDREY GUTHRIE  
 MARTHA HAMM  
 WILLIE HARRELSON  
 GARNETT HINSHAW  
 VIVIAN HOOTS  
 CLARICE HOOVER  
 KATHERINE HOWARD  
 RUTH HULL  
 VIRGINIA HUNT  
 ALICE INGOLD  
 NANCY ISENHOUR  
 EVELYN KEARNS  
 ELA KINSEY  
 CONSTANCE KLEIN

DOROTHY KOONCE  
 MARGUERITE KOONCE  
 EDITH LEONARD  
 DALLIE LINER  
 BETTY LOWY  
 GRACE MACPHERSON  
 HAZEL MATTHEWS  
 MARTHA GREY MICKEY  
 CATHERINE MINNIS  
 VONCILE MINNIS  
 LILLIE MAE MOORE  
 VELMA NELSON  
 MARIE PARKER  
 HAZEL PASCHAL  
 ARTIE PIRTLE  
 FANNIE POE  
 DOROTHY PRESNELL  
 NELL PRICE  
 MARJORIE PUTNAM  
 GERALDINE RASH  
 WANONA RASH  
 RAMONA REDMAN  
 ARIANNA ROBERTS

LENA SALE  
 LILLIAN SELF  
 MYRA SCOTT  
 MARIE SNIDER  
 FRANKIE STOCKARD  
 CLAUDIA STRANGE  
 DAMARIS TAUSSIG  
 MARY TOWNSEND  
 MARIANNA TRICE  
 DOROTHY LEE USHER  
 JANIS USHER  
 CHARLOTTE VARNER  
 ANNIE MAE WAGONER  
 MILDRED WAGONER  
 FLORENCE WALDER  
 ETHEL WALL  
 RUBY WALL  
 JULE WARREN  
 SARA WARREN  
 LOUISE WAY  
 SUE WHITE  
 SUE WOODRUFF

## OFFICERS

GLADYS BROOKS . . . . . *President*  
 DOROTHY PRESNELL . . . . . *Vice-President*  
 HELEN CAMPBELL . . . . . *Secretary*  
 EVELYN KEARNS . . . . . *Treasurer*





# FUTURE TEACHERS CLUB

## OFFICERS

IRENE PARKER . . . . . *President*  
 JOSEPHINE DEAL . . . . . *Vice-President*  
 RUTH GRIFFITH . . . . . *Secretary*  
 FANNIE POE . . . . . *Treasurer*

## ROLL

GLADYS BROOKS	RUTH GRIFFITH	FANNIE POE
ELMA CHAMBLISS	FRANK HARRIS	DORIS POINDEXTER
BANKS CHILTON	HILDA LANIER	MARGIE PUTNAM
JOHN DAVIS	HAZEL MATTHEWS	GERRY RASH
WILLIE EDWARDS	RUTH MAY	IRIS THACKER
ONETA FITZGERALD	GRACE MCKAUGHAN	MARY TOWNSEND
RUTH GOOD	IRENE PARKER	BOB WILLIAMS





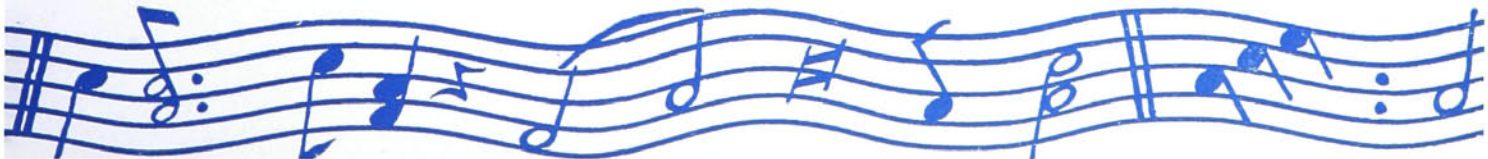
# ARTEMESIAN LITERARY SOCIETY

## OFFICERS

HARRIETT BERRY . . . . . *President*  
 DORIS POINDEXTER . . . . . *Vice-President*  
 JACQUELINE KENNEDY . . . . . *Secretary*  
 ANNA LEE ELLISON . . . . . *Treasurer*

## ROLL

JESSIE BAITY	WANDA HARVILLE	ZELMA PARNELL
HARRIETT BERRY	MARY HOLTON	DORIS POINDEXTER
GRACE BIVINS	RACHEL HUNT	JUDY PRIMM
FRANCES CHAPPELL	JACQUELINE KENNEDY	FRANCES SCRUGGS
NAN CLAPP	CHRISTINE KISER	RONDA SEBASTIAN
MARY ANN COE	ANNE KITCHENS	DONREE SETZER
KATHERINE CRANFORD	BETTY DEAN KNOX	DORIS SETZER
KATHRYN CROSS	DORIS KOONCE	PATSY SIFFORD
GENEVA CROWDER	BONNIE LEWIS	DORIS SNYDER
BETTY LOU CUMMINS	MIRIAM MCCALL	GENE THACKER
WILLIE EDWARDS	GRACE MCKAUGHAN	IRIS THACKER
FLORENCE ELKINS	BARBARA MATHEWS	MARTHA VARNER
ANNA LEE ELLISON	RUTH MAY	ELAINE WELBORN
FRANCES FOSTER	MARY NELL MELTON	BETTY WELCH
RUTH GRIFFITH	DORIS NEWMAN	MARY JO WILSON
NELL HARTMAN	IRENE PARKER	CAROLINE YORK
	RUBY PARKER	





**M O D E R N  
P R I S C I L L A  
C L U B**

**OFFICERS**

VIRGINIA HUNT . . . . . *President*  
 BETTY RUSSELL . . . . . *Vice-President*  
 JULE WARREN . . . . . *Secretary*  
 GLADYS BROOKS . . . . . *Treasurer*

**ROLL**

FRANCES BINGHAM	RACHEL HUNT	MARGIE PUTNAM
GLADYS BROOKS	VIRGINIA HUNT	ARTIE PIRILE
HAZEL GIBSON	ELA KINSEY	ARIANNA ROBERTS
MARTHA HAMM	EVELYN KEARNS	BETTY RUSSELL
CLARICE HOOVER	CHRISTINE KISER	FRANCES SCRUGGS
KATHLEEN HOWARD	BETTY LOWY	JULE WARREN
	ADA OLIVER	



# HOME MANAGEMENT HOUSE

Putting into use the motto, "Learn to do by doing," the candidates for a bachelor of science degree in Home Economics are required to live in the practice house for six weeks during the last semester of their senior year. Here, working together, they apply all the principles they have learned in previous classes since their entrance in college. This practice is required by the National Vocational Department in the Home Economics Program.

Miss Ada Johnson, teacher and supervisor, directs the girls at the practice house.

The Home Economics House is located, for convenience, near the college at 909 West College Drive. This phase of work brings new interests, new ideas, and new experiences into the student's work; therefore progress is made equal to the modern standards of home-making.

In the spring these six girls move into the practice house: Frances Scruggs, Gladys Brooks, Helen Gibson, Christine Kiser, Virginia Hunt, Margie Putnam. There are many groans in the morning when the girls are pulled out of bed to prepare breakfast and dust like industrious housewives. The budget suffers a pinched existence as elaborate dinners are planned. O, yes, they have fun! Lots of formals and teas and knitting parties. And sometimes they invite the boy friends.



MISS ADA JOHNSON  
*Supervisor*





## RELIGIOUS COUNCIL

FRANK HARRIS  
*President*

WILLIAM WEST  
*Vice-President*

GERRY RASH  
*Secretary-Treasurer*



## MINISTERIAL ASSOCIATION

PARKER HAGER  
*President*

KENNETH CROUSE  
*Vice-President*

BRYAN GREGORY  
*Secretary*

DR. P. E. LINDLEY  
*Faculty Advisor*



## MEDICAL CLUB

ROWLAND LONG  
*President*

FRANCES CHAPPELL  
*Vice-President*

HENRY FERREE  
*Secretary*

CHARLES KENNERLY  
*Treasurer*

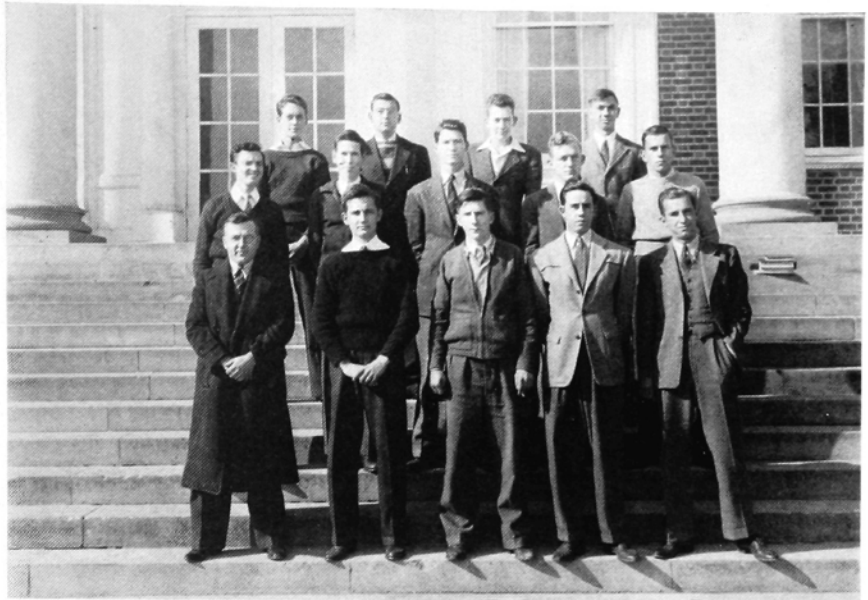
## ENGINEERS CLUB

WINFRED LAMAR  
*President*

ROLAND GARMON  
*Vice-President*

ROBERT HICKS  
*Secretary*

OTIS SCOTTEN  
*Treasurer*



## FORENSIC COUNCIL

HARRIET BERRY  
*Artemesian*

TED SCHUMACHER  
*Thalean*

GLADYS BROOKS  
*Nikanthan*



## INTERCOLLEGIATE DEBATERS

MRS. FLEISCHMANN  
*Faculty Advisor*

TALMADGE HINKLE

ROGER TUCKER

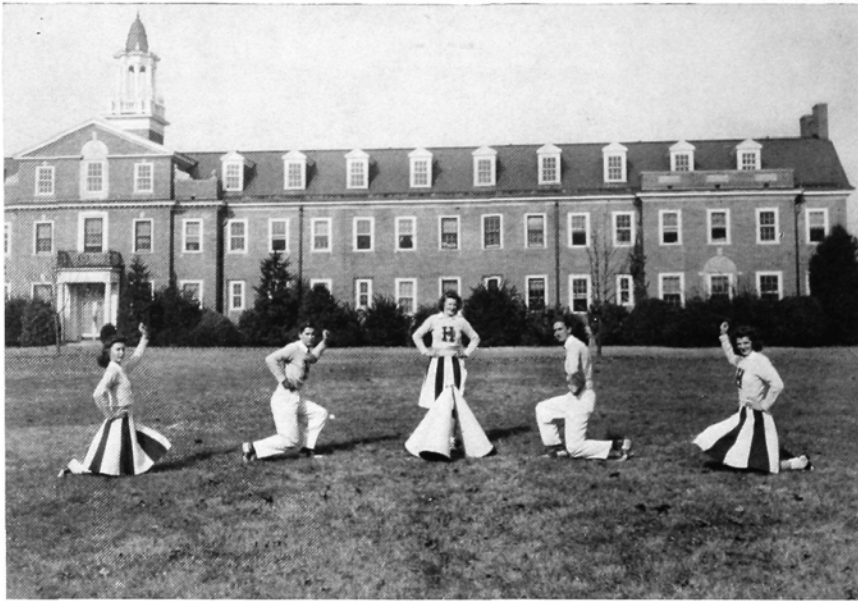
HENRY CHILES

KENNETH CROUSE

LAWRENCE LINNEMAN

DONALD McCLURG





## CHEERLEADERS

CHARLOTTE VARNER  
 BILL GANTT  
 TOOTSIE ELKINS  
 BILLY HENDERSON  
 GENEVA CROWDER



## WHO'S WHO

DARRELL ALLRED  
 HARRIETT BERRY  
 GRACE BIVINS  
 BANKS CHILTON  
 JERRY COUNIHAN  
 FRANK FERNANDEZ  
 FRANK HARRIS  
 RUSSELL HUGHES  
 VIRGINIA HUNT  
 IRENE PARKER  
 GERRY RASH  
 IRIS THACKER



## BLOCK "H" CLUB

JOHN DAVIS  
 FRED MILLS  
 DOUGLAS CASE  
 GABBY HARTNETT  
 JAMES LOWDER  
 HILLIARD NANCE  
 FRANK FERNANDEZ  
 JERRY COUNIHAN  
 ELVIN LEWIS  
 JACK HOUTS  
 GEORGE DEMMY  
 BILL KEENE  
 BILL PATTERSON  
 ED GREESON  
 CELL MALFREGEOT



## LIGHTED LAMP

DARRELL ALLRED  
HARRIETT BERRY  
FRANK HARRIS  
VIRGINIA HUNT  
MARTHA GREY MICKEY  
IRENE PARKER  
DOROTHY PRESNELL  
GERALDINE RASH



## THE FOOTLIGHTERS

JERRY COUNIHAN  
*President*

HARRIETT BERRY  
*Secretary*

FANNIE POE  
*Treasurer*



## SQUARE DANCE CLUB

HENRY RIDENHOUR  
*President*

GERRY RASH  
*Vice-President*

NAN CLAPP  
*Secretary-Treasurer*





. . . Here are recorded the failings and successes of our sports teams with an added reminder to read between the lines for the yells of the student body and a splendid school spirit which backed the boys and girls in all their competitive sports adventures.



A T H L E T I C S





## A T H L E T I C   A S S O C I A T I O N

The most evident function of the athletic council is their direct supervision over all athletic contests. The supervision of the ticket sales, the care of equipment, and the arrangement of trips for the varsities are but a few of its varied tasks. They are responsible for the spirit of our teams as opposed to that of the other schools of our conference. However, the promotion of intercollegiate sports is but one phase of their work. Less noticeable but far more important is their task of extending the athletic program to every student by means of the physical education classes and the intramural sports programs. Recognizing the need for emphasis upon health education, they insist upon every physically fit student's participation in some phase of this program. Composed of coaches, faculty members, and students, the group is completing another progressive year under the guidance of its chairman, Dr. C. R. Hinshaw.



GLASGOW



YOW



McCACHREN

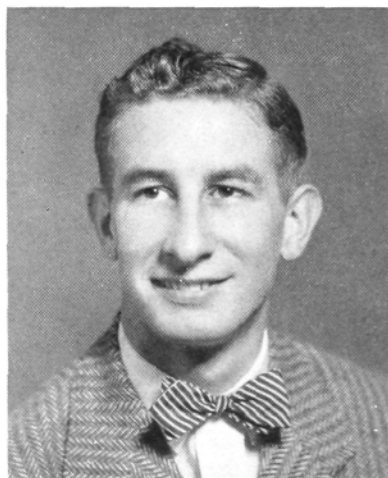
# FOOTBALL

## RESUME OF THE SEASON

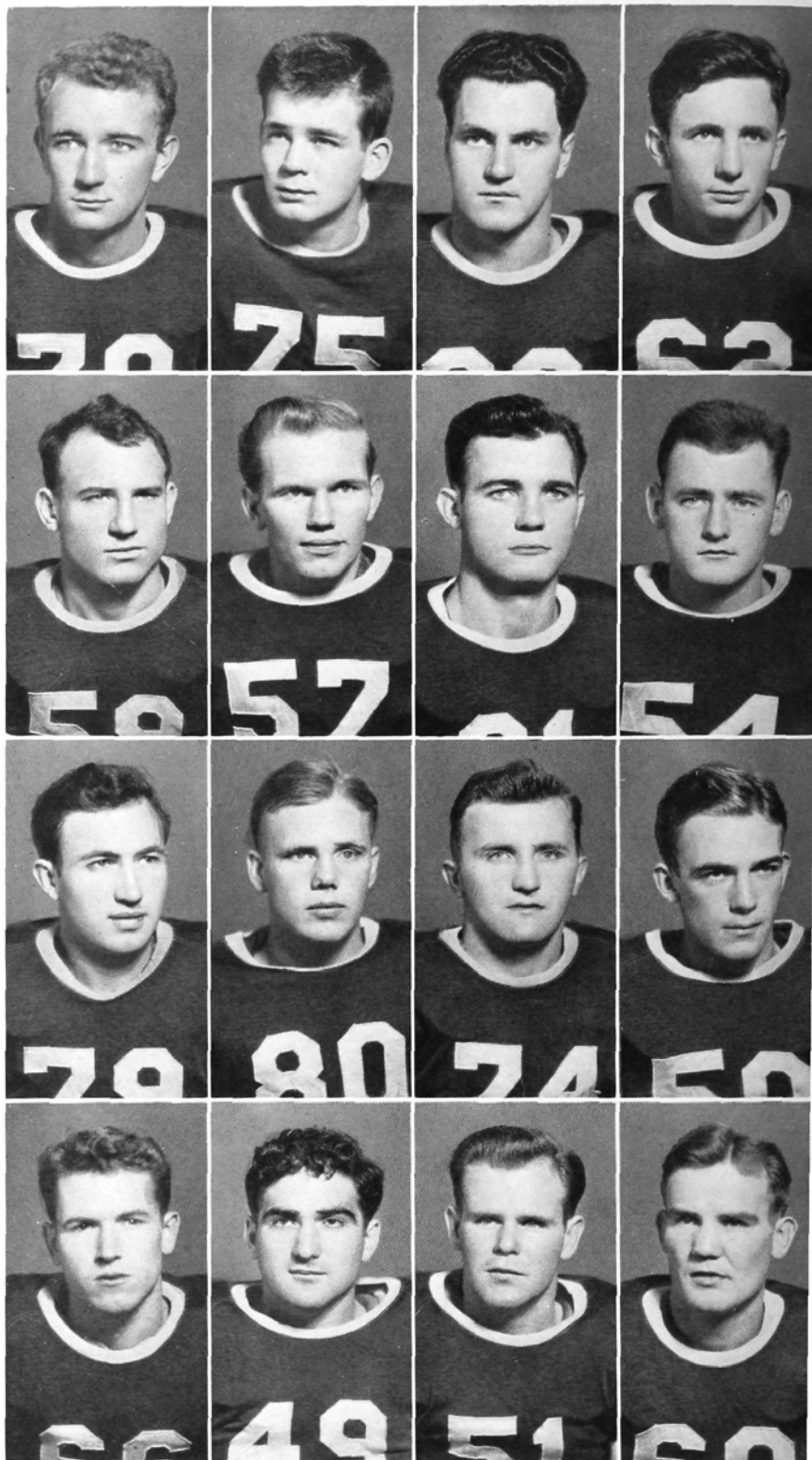
When one has a winning team, there's a lot to be written; but when one has a losing team, usually he has nothing to say. Well, we did have a losing team, but that doesn't mean that we have nothing to write about. That doesn't mean that there was nothing to cheer. That doesn't mean that our boys don't deserve any praise. By all means, our fighting Panthers deserve plenty of roses and a few orchids thrown in.

The boys traveled down to South Carolina to discover that Southern hospitality is extinct there, as The Citadel ran over them 47-0. Our boys, as well as being outclassed and outplayed, were outsized and outnumbered.

The next game put us against Lenoir Rhyne, and it also put luck against us as we lost our ace tackle, Bud Fletcher, because of a broken leg, and also the game. Our boys led at the half, but the lack of reserves held them back, therefore losing the game, 14-7.



CELL MALFREGEOT  
*Manager*

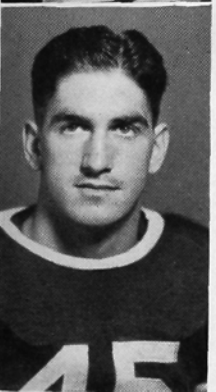
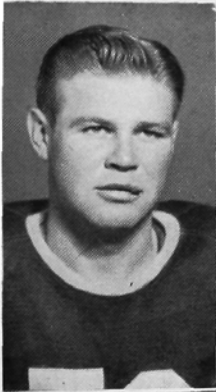


SHIPP  
LEPKOWSKI  
VEACH  
CASE

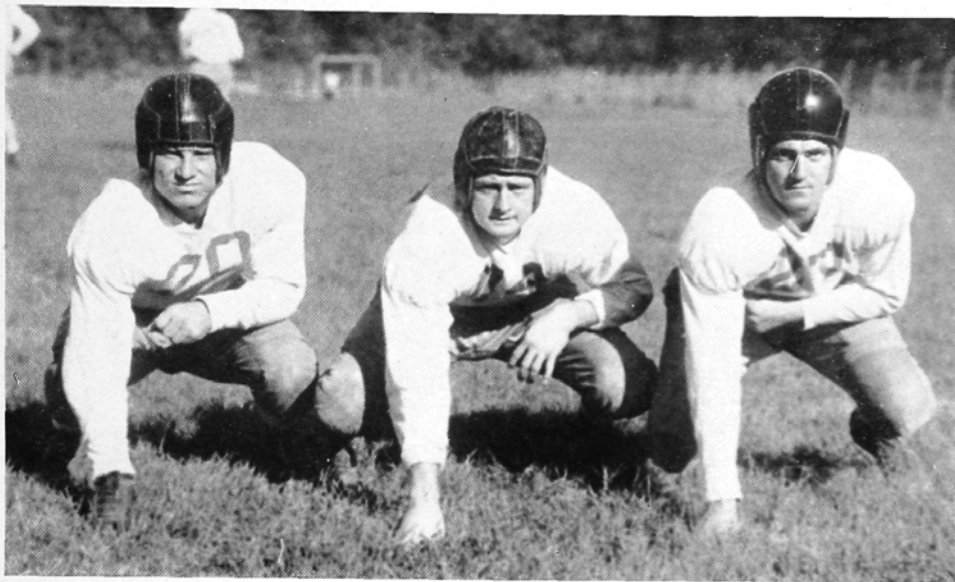
FLANAGAN  
BOLES  
FREEMAN  
DITULLIO

LIPTAK  
GREESON  
PETACK  
LOWDER

WEAVER  
FLETCHER  
MAXWELL  
MILLS



MYERS  
HOUTS  
GRISWALD  
SPINELLI



The Panthers bounced back and took Emory and Henry in an exciting thriller. They overcame a 7-0 lead in the first half to score twenty points in the second half. Maxwell and Flanagan played beautiful ball throughout the game.

Enlightened by this win, they went to Catawba, and there saw stars. The Indians crossed us in a 29-0 game. But our boys fought!

Roanoke's fast backfield just eked out a victory over us by scoring in the last minute of the ball game to a 12-6 outcome.

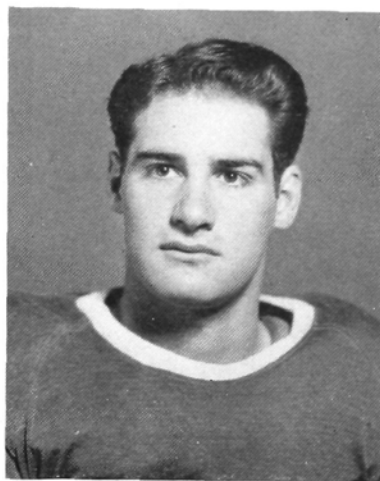
W. C. T. C. pulled a surprise on us by scoring 12-0. Although we lost, "Eve Joe" Petack played beautiful defensive ball.

Then came the game of the season! Elon came, saw, and conquered. The score was 47-0. Don't judge the game by the score, however. Our boys made those Christians sweat and grunt for every half inch. H. P. C. was really proud of our Panthers that night.

Our second win came over Guilford, who, previous to that game, had not scored a touchdown. We beat them 26-0, keeping their slate clean. Lumsden and Petack plunged over for scores to lead the parade.

Our last game and last loss was given to us by the Mountaineers of Appalachian State. This ended a rather disappointing, but fighting season.

For next year's team, we can predict a better outcome. Losses will be Captain Frank Fernandez, Mills, and Greeson. This



FRANK FERNANDEZ  
*Captain*

leaves experienced and seasoned men with Frosh Lumsden and Weaver promising great things. Another loss which will be greatly felt is Art Griswald, who has really played good ball these past three years. He's a player who deserves a lot of tribute for his gallantry on the field. We can't forget Fernandez, whose cleverness furnished many brilliant plays throughout his four years of ball, although he was often handicapped by injuries.

Speaking for Coach Jim McCachren, who held his first year as football coach, we know that, with the new talent plus the experienced men, H. P. C. will have a better year to come.

### FOOTBALL RESULTS

High Point .....	0; Citadel .....	45
High Point .....	7; Lenoir Rhyne .....	14
High Point .....	20; Emery and Henry .....	7
High Point .....	0; Catawba .....	29
High Point .....	6; Roanoke .....	12
High Point .....	0; W. C. T. C. ....	12
High Point .....	0; Elon .....	47
High Point .....	26; Guilford .....	0
High Point .....	0; Appalachian .....	26

# V A R S I T Y      ' '      H      ' '

## S Q U A D

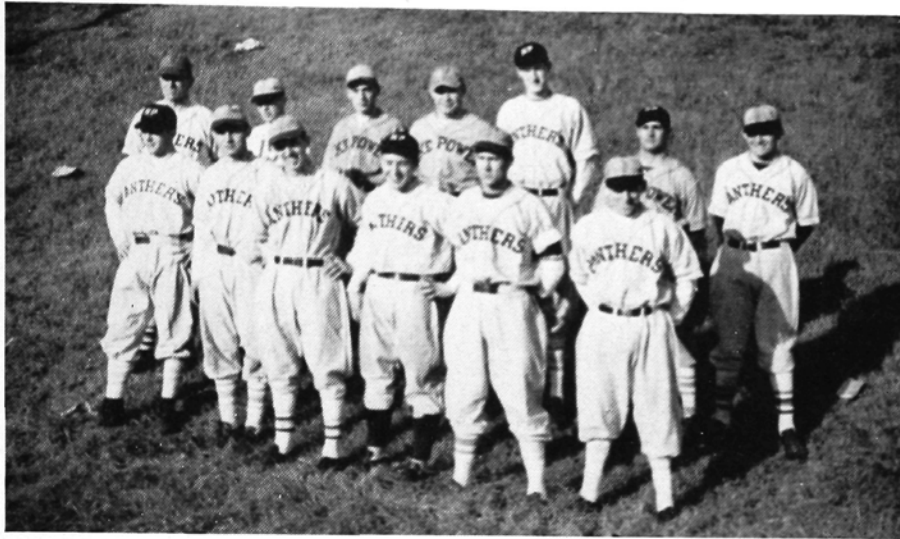


FRANK JOHNSON  
 HENRY MINER  
 JOHN MATTHEWS  
 JACK HOUTS  
 FRED MILLS  
 JIMMY LOWDER  
 RICHARD DiTULLIO  
 HENRY LIPTAK  
 MARTY SPINELLI

BILL ANDERSON  
 DON WELBORN  
 DICK MYERS  
 JACK BURKHEAD  
 RALPH YOW  
 HOWARD VEACH  
 FRANCIS BOWEN  
 BOB SHIPP  
 ED GREESON

LINDSAY WEAVER  
 KENT DENNIS  
 JOE PETACK  
 HENRY MAXWELL  
 ALVIN BOLES  
 JOE LEPKOWSKI  
 BUD FLETCHER  
 RAYMOND FREEMAN  
 JIM FLANAGAN





Every college has its ups and downs in the fight for champion athletic teams. High Point College proves no exception to this rule. Thus while High Point College registered its ups in producing a winning basketball team and a winning soccer team, it has suffered its downs in baseball. Along with the football players the Diamond Dusters have little to show for their effort except a fighting spirit, sprinkled with one or two stellar players. This combination nets nothing in the box scores.

At the bat Nance and Myers provided the hitting attack, while Nance, Koontz, Cochrane, Myers, and Griswald held down the fielding honors. On the mound Cashett and Scotten shared the laurels.

The squad, meeting eight opponents, managed to eke out a one-run victory over Guilford, and a 2-2 tie with Atlantic Christian, a game which was called off in the third inning on account of

# BASEBALL

rain. The boys lost six games to Catawba, Elon, Cameo (Burlington), Lenoir Rhyne, Burlington Mills, and Guilford.

Because of war-time restrictions baseball has been dropped for the coming season.

## RESULTS

High Point . . . 2;	Atlantic Christian . . . 2
High Point . . . 7;	Catawba . . . . . 17
High Point . . . 2;	Elon . . . . . 13
High Point . . . 1;	Cameo (Burlington) 15
High Point . . . 1;	Lenoir Rhyne . . . 11
High Point . . . 6;	Guilford . . . . . 5
High Point . . . 1;	Burlington Mills . 6
High Point . . . 4;	Guilford . . . . . 5

# BASKETBALL

1 9 4 1 - 1 9 4 2

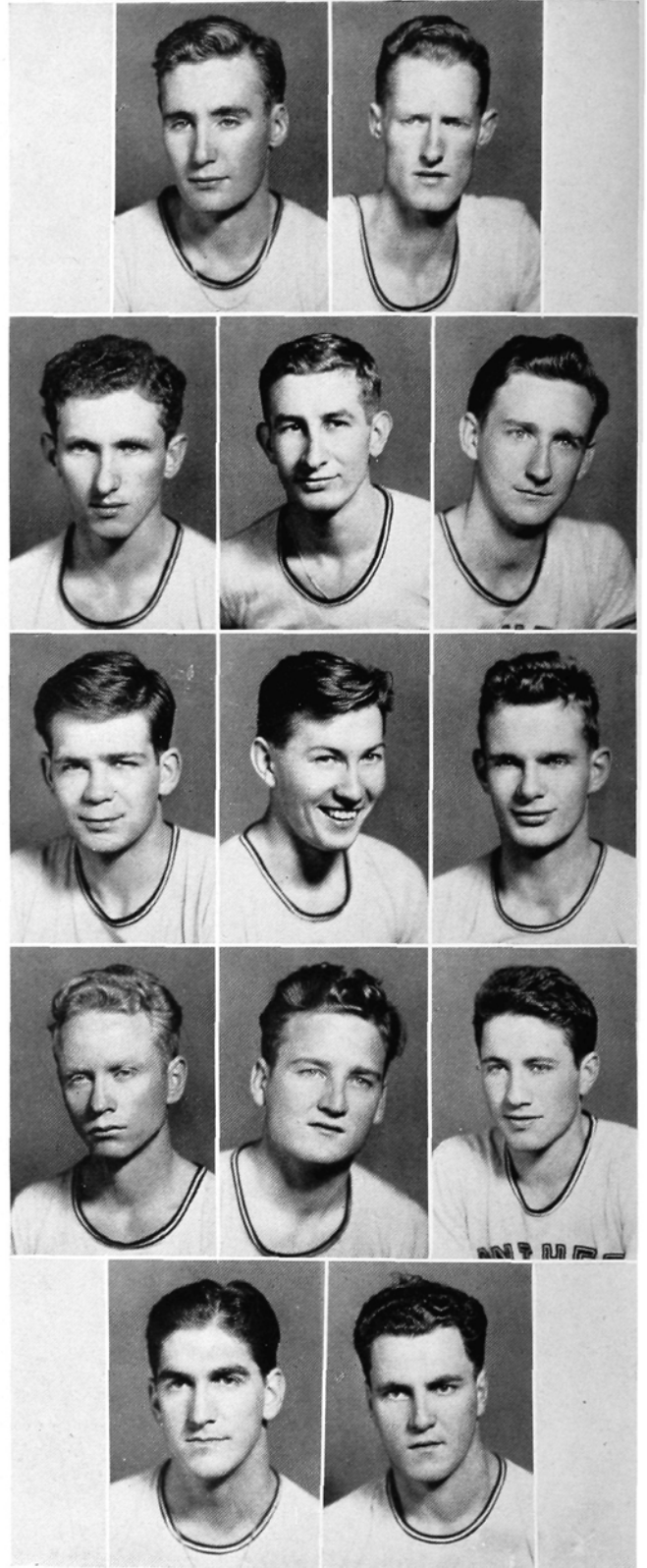
## RESULTS

High Point . . . . .	57; McCrary . . . . .	35
	Asheboro	
High Point . . . . .	53; A. C. C. . . . .	40
	Wilson	
High Point . . . . .	47; A. C. C. . . . .	40
	Wilson	
High Point . . . . .	46; Y. M. C. A. . . . .	26
	Here	
High Point . . . . .	60; Rio Grande . . . . .	20
	Here	
High Point . . . . .	42; Hanes Hosiery . . . . .	39
	Here	
High Point . . . . .	50; Guilford . . . . .	28
	Here	
High Point . . . . .	67; Catawba . . . . .	39
	Salisbury	
High Point . . . . .	70; Lenoir-Rhyne . . . . .	43
	Hickory	
High Point . . . . .	49; Catawba . . . . .	39
	Here	
High Point . . . . .	60; Y. M. C. A. . . . .	38
	Y. M. C. A.	
High Point . . . . .	43; McCrary . . . . .	36
	Here	
High Point . . . . .	59; Appalachian . . . . .	36
	Boone	
High Point . . . . .	52; W. C. T. C. . . . .	37
	Cullowhee	
High Point . . . . .	54; W. C. T. C. . . . .	30
	Cullowhee	
High Point . . . . .	55; Davis-Elkins . . . . .	41
	Here	
High Point . . . . .	66; Lenoir-Rhyne . . . . .	45
	Here	
High Point . . . . .	33; Elon . . . . .	34
	Elon	
High Point . . . . .	53; Roanoke . . . . .	37
	Here	
High Point . . . . .	60; Appalachian . . . . .	49
	Here	
High Point . . . . .	35; Guilford . . . . .	20
	Guilford	
High Point . . . . .	59; Elon . . . . .	35
	Here	

## NORTH STATE TOURNAMENT

High Point . . . . .	71; Lenoir-Rhyne . . . . .	31
	Here	
High Point . . . . .	52; Elon . . . . .	21
	Here	
High Point . . . . .	50; Appalachian . . . . .	34
	Here	

“The greatest team ever to wear the Panther colors,” that is the tribute paid to the squad by our genial, cigar-chewing, basketball mentor, Coach Virgil Yow. All the followers of the Panther Basketeers wholeheartedly join in with the coach in singing this praise, for the Panthers proved their metal when they roared through a tough schedule of twenty-five games, including the tournament play, to capture the North State Conference Title, and in so doing won 24 out of 25 games, losing



Top Row: Counihan, Keene. Second Row: Nance, Malfregeot, Goerner. Third Row: Flanagan, Hartnett, Demmy. Fourth Row: Coble, Patterson, Stasulli. Fifth Row: Spinelli, Liptak.

only a one point decision to our Christian brothers of Elon.

Webster doesn't contain enough flowery adjectives to describe this team of Supermen for their laurels have been great, and their task, while not an easy one, was taken in stride with the greatest of ease. Once these Panthers started to roll they gathered momentum along the way and were unbeatable by any other basketball team, without the aid of over-hanging balconies to stop their scoring punch.

The Panthers roared through a twenty-two game schedule devouring all their opponents, racking up the scalps of seventeen victims before a change in the diet, the appearance of Elon, our Christian friend, gave us a bad case of indigestion. While we were looking for the bicarb, Elon made off with the dessert and the Panther Cagers were at the short end of a 34-33 score, for their first and only defeat of the season. However, regardless of alibis, the Panthers soon showed their followers it was all a mistake as they again took stride and turned back a tough Roanoke team, 53-57, and followed this up by defeating Appalachian, last year's defending champs of the North State Conference by 60-49. Guilford likewise fell victim at the hands of our reserves while the first team looked on for most of the game. We then closed the season with a sweet victory over Elon proving the first game was a mistake, for the Christians this time tasted the sting of the Panther attack to the tune of a 59-35 score.

During the regular season the High Point Cagers turned in splendid victories over Davis-Elkins, Rio Grande, from the Ohio Valley Conference, a strong Hanes Hosiery Aggregation, as well as running up lop-sided scores over McCrary, twice, a pair of victories over Catawba, A. C. C., Lenoir-Rhyne, W. C. T. C., Guilford, Appalachian, and High Point "Y." The team averaged better than 53 points per game, and only by Coach Yow using his subs freely did the Panthers hold the score down.

Finishing at the top of the heap at the end of the season, High Point's Panthers did what was expected of them by winning the North State Conference, held at our gym, thus being crowned North State Champions. In the first round the Panthers clawed Lenoir-Rhyne by a 71-31 count. The first team composed of Nance, Keene, Malfregeot, Demmy, and Counihan went out and

quickly piled up a large score, and then retired to watch the reserves play the rest of the game, while they saved their appetite for Elon, in the semi-finals. In the encounter with Elon, the varsity found that the Christians could not satisfy their appetite, for they had garnered 37 points to Elon's 6, so from then on the reserves were allowed to toy with the Missionaries.

However in the finals the Panthers met a foe worthy of their attention in Appalachian, the defending champions, and although the Mountaineers twice previously had been victims of the Panthers, they proved stalwart opposition. It was a nip and tuck battle up to the last four minutes of play, whereupon the Panther's five point lead was stretched into a sixteen point lead, so with the score 50-34, the Panthers wrestled the coveted laurels from the Mountaineers for themselves to wear.

Nance, a great ball player, brilliant on dribbling and a dead eye on long shots from the side of the court, was a unanimous choice by the coaches for the forward position on the Mythical North State Conference Team. Killer Keene, our 6 foot, 8 inch dwarf, won the center position, along with Cel Malfregeot, our other scrappy little forward, at guard. All three players have kept us in the ball game with their shooting eye. But it must not be forgotten that it took two other men to make up this wonder team, Captain Jerry Counihan and Russian Demmy. Both boys, while over-shadowed on the shooting end of the game, were great on the floor game and played cool heads-up ball during the thick of the battle.

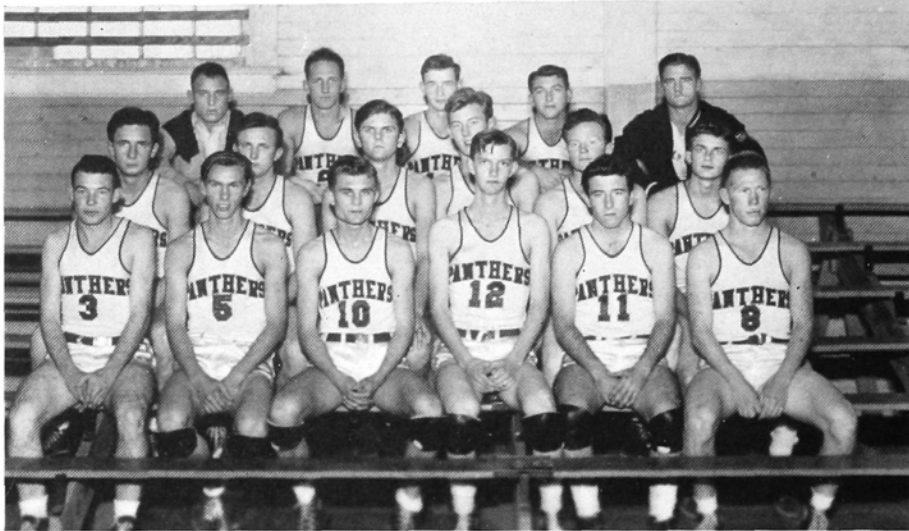
Bill Patterson, Jim Flanagan, Johnny Stasulli, Hugh Goerner, Gabby Hartnett, and Red Coble also come in for praise, for they too have seen plenty of service when the team needed a well deserved rest. It is from these boys, with the exception of Flanagan who will leave us for the army, that Coach Yow will have to fashion next year's team, along with Demmy the only hold-over from the wonder-team, and those young hopefuls that come up from the Junior Varsity.

The praises of the team have not been confined to the borders of North Carolina, for elsewhere the news has spread, and as a result the Panthers have been tended a bid to the Kansas City Tournament held March 9-14, which they have accepted with high hopes of adding new scalps to its already large and imposing list of victims.



FREDDY  
L.L.COT

# JUNIOR VARSITY BASKETBALL



As the Panthers go, so go the Kittens. This may not be an adage, but it certainly holds true this year, for as the varsity was hogging all the limelight in compiling its impressive record, the Junior Varsity was busy acquiring its own brilliant record. The Kittens in winning 19 games and losing three show great promise in assuring the varsity with some fine material in the persons of Bob McGinn, Bob Porter, Bill Stamey, Ray Rider, Price, and Red Toker. These boys were outstanding throughout the season along with Nostrand, Weaver, Evans, and Pappas on the second team.

Coach Jim McCachren's boys have turned in victories over several high schools and strong semi-pro aggregations. We lost to Silver Knit Semi-Pro and Catawba Freshmen both by one point, and to Butner Furniture Company by two points. In a return game, we defeated Catawba Frosh by a nine point margin.

The team consists of Welborn, McGinn, Stamey, Porter, Jarrett, Toker, Nostrand, Rider, Pappas, Van Bylevelt, Weaver, Price, Evans, B. Evans, Coble.

## RESULTS

High Point . . . 36;	Greensboro W. Auto 32
High Point . . . 33;	Hanes High School . 31
High Point . . . 46;	Kernersville . . . 24
High Point . . . 28;	Butner Furniture . 30
High Point . . . 38;	Mt. Airy . . . . 16
High Point . . . 26;	Lindale Dairy . . 18
High Point . . . 47;	Penbrook . . . . 31
High Point . . . 41;	H. P. Railway Ex. . 32
High Point . . . 24;	Catawba Freshmen . 25
High Point . . . 29;	Mt. Airy High Sch'l 13
High Point . . . 33;	Catawba Freshmen . 24
High Point . . . 24;	Minnelo . . . . 17
High Point . . . 43;	Midway High School 32
High Point . . . 43;	Triangle . . . . 37
High Point . . . 30;	Bethany Vol. Club . 24
High Point . . . 39;	Junior Home . . . 33
High Point . . . 39;	Reidsville . . . . 23
High Point . . . 52;	Reidsville . . . . 32
High Point . . . 32;	Silver Knit . . . . 33
High Point . . . 52;	Princeton . . . . 13
High Point . . . 54;	Hasty High School . 14
High Point . . . 30;	Harris . . . . . 9

## RESULTS

High Point . . .	8;	Jamestown All-Stars	o
High Point . . .	7;	Jamestown All-Stars	1
High Point . . .	5;	Davidson College	o
High Point . . .	9;	U. of Virginia	o
High Point . . .	4;	Duke University	o
High Point . . .	1;	Navy	1
High Point . . .	3;	U. of Virginia	1
High Point . . .	3;	Duke University	1
High Point . . .	4;	Davidson College	o



Soccer furnishes us a beautiful old story with the usual glorious ending for once again our Purple Panthers have proved their metal by crashing through a tough schedule of nine opponents, emerging unscathed unless a 1-1 tie with Navy caused by a bad break shows up as a scar. For against Navy the Panthers

did all the scoring, punting a point for each side when one of our players scored one for the Middies.

The Panther "Shinbusters," coached ably by student coach Elvin Lewis, turned in two victories each over strong aggregations from Duke University, Davidson College, and Virginia University. In addition to the tie game with Navy, they also lambasted the Jamestown All-Stars twice by 7-1 and 8-1 scores.

Captain Howard Garmon, Elvin Lewis, Roland Garmon, Johnny Stasulli, H. Coble, and M. Coble turned in stellar performances throughout the season. And we won't forget the excellent playing of goalie Leo Pappas.

The Panthers once again holds the mythical North Carolina State crown and are ranked as one of the best soccer squads in the East.



## THE SOCCER SEASON • 1941



Miner, Pappas, Welborne  
Bylevelt, Counihan, Van Guilder

The tennis team this year, composed of Henry Miner, Leo Pappas, George Welborne, Henry Van Bylevelt, Jerry Counihan, George Van Guilder, and Ethel Norton, the sole girl tennis player, has the advantage of the four new clay courts which have been completed this summer in back of the student activities building.

During the fall season the Panther netmen played two contests with Oak Ridge Academy, losing both matches after a bitter struggle.

By way of individual activity, Ethel Norton, during the summer vacation, participated in the North Carolina

State Tournament held at the Greensboro Country Club. She captured the women's singles and doubles championships of North Carolina. She further added to her already many laurels the Texas State Crown when she traveled back to her native Texan State to play in the women's singles and doubles tournament there. In the spring she plans to enter the Pinehurst Tennis Tournament in Pinehurst, North Carolina.

The team will, because of wartime curtailment of sports on the college campuses throughout the nation, play a shortened schedule of matches.

## P A N T H E R      N E T M E N

"Girls! Hockey practice today, 3:30," read stentorian signs on the bulletin board daily. Tootsie always rounding up sport enthusiasts . . . girls playing for points and curves, and gaining both . . . Miss Chapman, new and blond and as good as she looks, leading the girls on to better and harder fighting. In a hot and tough season, the upperclassmen skimmed over the frosh team in the hockey tournament in the fall. They again took the lead in soccer, but the wiry sophomores finally overrated the seniors on the volley ball court. In the spring followed the interesting sports of basketball, tennis, ping pong, badminton, and swimming.

# W O M E N ' S A T H L E T I C A S S O C I A T I O N



MISS JO CHAPMAN

## ROLL

MILDRED ALLEN	CONNY KLEIN
JESSIE BAITY	DALLIE LINER
HARRIETT BERRY	ADA OLIVER
GRACE BIVINS	ZELMA PARNELL
JEWELL CAMPBELL	FANNIE POE
ELOISE CECIL	DORIS POINDEXTER
HELEN CLARK	DOROTHY PRESNELL
RUTH COBLE	BETTY RUSSELL
GENEVA CROWDER	RONDA SEBASTIAN
TOOTSIE ELKINS	LILLIAN SELF
ENOLA SUE FLOWERS	PATSY SIFFORD
JEANNE GRAFF	GENE THACKER
RUTH GRIFFITH	IRIS THACKER
AUDREY GUTHRIE	MARY ALICE THAYER
WANDA HARVILLE	D. L. USHER
GARNETT HINSHAW	JANIS USHER
MARY HOLTON	CHARLOTTE VARNER
VIRGINIA HUDGINS	JULE WARREN
VIRGINIA HUNT	NINA WHITAKER
ANN KITCHENS	SUE WOODRUFF
	CAROLINE YORK

## OFFICERS

TOOTSIE ELKINS . . . . .	<i>President</i>
GENEVA CROWDER . . . . .	<i>Vice-President</i>
AUDREY GUTHRIE . . . . .	<i>Secretary</i>
JESSIE BAITY . . . . .	<i>Treasurer</i>
NINA WHITAKER . . . . .	<i>Reporter</i>
DOROTHY PRESNELL . . . . .	<i>Reporter</i>
LILLIE MAE MOORE . . . . .	<i>Sergeant-at-Arms</i>



# WOMEN'S ATHLETICS AT

## SOFTBALL

MILDRED ALLEN  
JESSIE BAITY  
ADA RUTH CRAVEN  
GENEVA CROWDER  
JEAN GRAFF  
AUDREY GUTHRIE  
NANCY ISENHOUR  
CONNIE KLEIN  
BETTY DEAN KNOX  
LUCILLE LANIER  
LILLIE MAE MOORE  
ETHEL NORTON  
RONDA SEBASTIAN  
DORIS SNYDER  
MARY ALICE THAYER  
BETTY WELCH



## VOLLEYBALL

DORIS SNYDER  
JESSIE BAITY  
AUDREY GUTHRIE  
MILDRED ALLEN  
RUTH GRIFFITH  
BETTY WELCH  
BETTY DEAN KNOX  
CONNIE KLEIN  
LILLIE MAE MOORE  
RONDA SEBASTIAN  
TOOTSIE ELKINS



## BASKETBALL

GENEVA CROWDER  
DORIS SNYDER  
LUCILLE LANIER  
ETHEL NORTON  
AUDREY GUTHRIE  
MARY ALICE THAYER  
ADA RUTH CRAVEN  
JESSIE BAITY  
NANCY ISENHOUR  
RUTH GRIFFITH  
RUTH COBLE  
TOOTSIE ELKINS

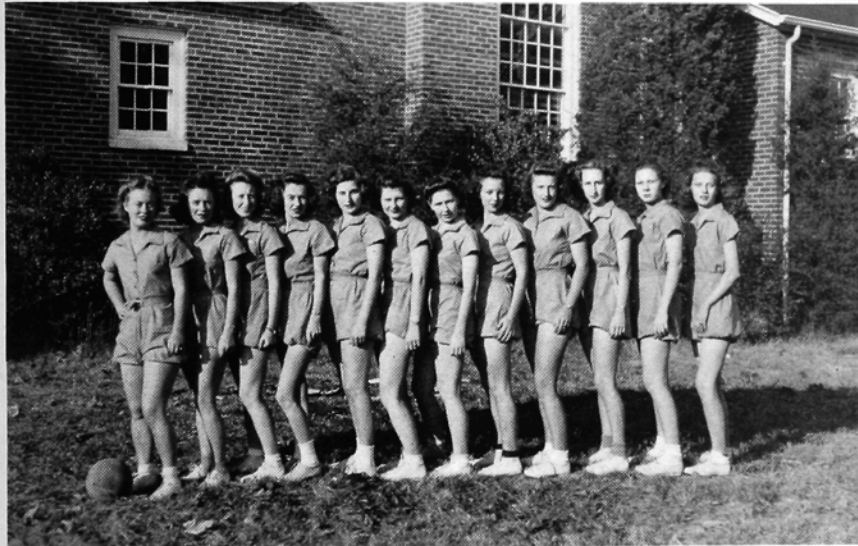






## R I D I N G

JOAN KOSBERG  
 BONNIE LEWIS  
 BETTY LOWY  
 DOROTHY PRESNELL  
 MARCENA GERSTUNG



## S O C C E R

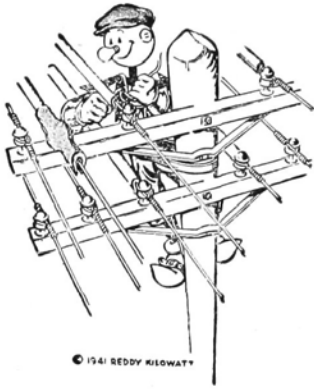
GENE THACKER  
 AUDREY GUTHRIE  
 LILLIAN SELF  
 JEAN GRAFF  
 CONNIE KLEIN  
 DALLIE LINER  
 JESSIE BAITY  
 MILDRED ALLEN  
 TOOTSIE ELKINS  
 LILLIE MAE MOORE  
 GARNETT HINSHAW  
 BETTY WELCH



## H O C K E Y

AUDREY GUTHRIE  
 LILLIAN SELF  
 GENE THACKER  
 JEAN GRAFF  
 JESSIE BAITY  
 DALLIE LINER  
 CONNIE KLEIN  
 TOOTSIE ELKINS  
 LILLIE MAE MOORE  
 MILDRED ALLEN  
 GENEVA CROWDER  
 GARNETT HINSHAW  
 BETTY WELCH

# H I G H P O I N T C O L L E G E



YOUR UTILITIES COMPANY IS  
MAKING EVERY DEPARTMENT OF  
ITS SERVICE COUNT TOWARD  
WINNING THE WAR

Did it ever occur to you that our employees in every Department are dedicated to your service and convenience? This is true of the lineman, the bus driver, the home economist, the agricultural engineer, the lighting engineer, the salesman, the service man, the meter reader, and in fact all of our folks.

We are glad to have a part in forwarding war production and more efficient, more economical living.

## DUKE POWER COMPANY

General Office

Charlotte, N. C.



## HIGH POINT COLLEGE

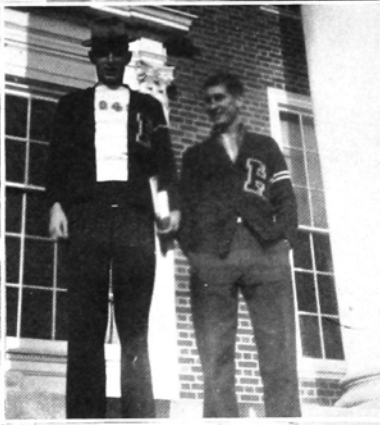
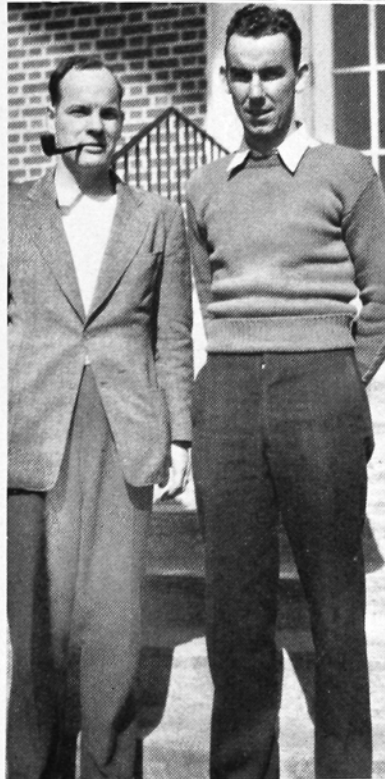
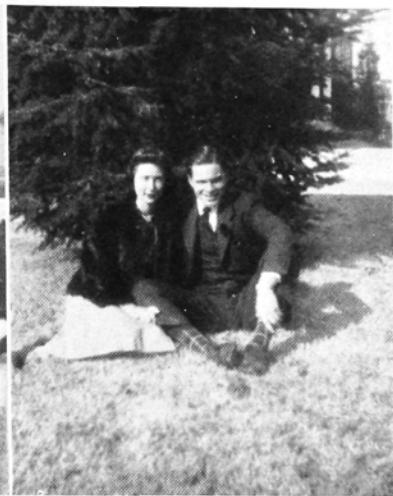
HIGH POINT, N. C.

ALL OUT FOR DEFENSE

Courses Geared to Wartime Both as to Time and Content

For Further Information Apply to

PRESIDENT OR SECRETARY OF ADMISSION



**FURNITURE  
CITY UPHOLSTERING CO.**

Incorporated

DESIGNERS AND  
MAKERS OF THE  
"DALLAS"  
LINE

HIGH POINT, NORTH CAROLINA

**COMPLIMENTS**

OF

**NEW SERVICE LAUNDRY**



**BEESON HARDWARE  
COMPANY**



"Your Sporting Goods  
Headquarters"

**TRAVEL BY BUS**

AND

SAVE THE DIFFERENCE



**GREENSBORO-FAYETTEVILLE  
BUS LINE, INC.**

ASHEBORO, NORTH CAROLINA

Without Printing Modern Education  
Would Be Impossible



**HALL PRINTING COMPANY**

PHONE 2385

Compliments of

**NORTH CAROLINA  
THEATRES**

- CENTER
- BROADHURST
- PARAMOUNT
- RIALTO

**N. L. GARNER, AGENCY**

**P**ERFECT  
PROTECTION  
AYS

**E**VERY WAY  
VERY DAY

226 Professional Bldg.

Phone 4648

**OCCIDENTAL LIFE INSURANCE CO.**

FOR IMPORTED AND DOMESTIC  
Champagne, Wine, Beer, Ale  
Potato Chips

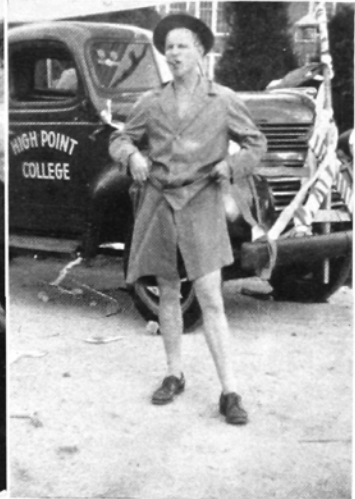
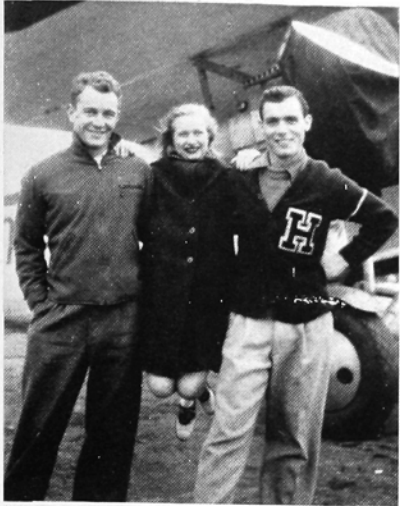
Always Fresh

Fried Daily

**PAUL YOUNT'S PACKAGE  
STORE**

790 N. Main St.

Phone 2661



Compliments of  
**J. C. PENNEY COMPANY**  
HIGH POINT, N. C.

Welcome to  
**THE SHERATON HOTEL**  
"Noted for Good Food"  
W. G. MALONE, Manager

**Lewis & Holmes Motor Freight  
CORPORATION**  
High Point, N. C. Atlanta, Ga.  
Serving the Southeastern States  
High Point Office Phone 4503

DRINK  
**ORANGE-CRUSH**  
CARBONATED BEVERAGE  
ORANGE-CRUSH BOTTLING CO.  
Greensboro, N. C.  
In the Brown Flavor-Guarding Bottle

**CUT RATE FURNITURE CO.**  
Complete Home Furnishings  
615-617 East Green St.  
High Point, N. C. Phone 2879

For Best Photographs and Engraving  
**MANNING STUDIO & ENGRAVERS**  
GREENSBORO, N. C.

**KOONCE FUNERAL HOME**  
Incorporated  
PHONE 4545

**HEDGECOCK LUMBER  
COMPANY**  
1215 Ward St. Phones 4006, 44232

Compliments of  
**CENTRAL ICE DELIVERY  
COMPANY**  
Phone 4507 512 W. Broad St.

Compliments of  
**CECIL'S DRUG CO.**

Compliments of  
**S. H. KRESS**

Compliments of  
**CHARLES STORE**  
STYLE MERCHANDISE

**GUILFORD GENERAL  
HOSPITAL**

Compliments of  
**SLANE HOSIERY MILLS**

**NORTH STATE TELEPHONE CO.**  
Serving High Point and Vicinity

**Harlee's**  
High Point's Quality Department Store



QUALITY WATCHES, DIAMONDS, JEWELRY, SILVERWARE,  
CLOCKS, GIFTS, LUGGAGE

**WAGGER JEWELRY COMPANY**

ELWOOD HOTEL CORNER

HIGH POINT, N. C.

Thrift Is Essential for Intelligent Citizenship

**HIGH POINT SAVINGS & TRUST CO.**

SERVING SINCE 1905

Member Federal Deposit Insurance Corporation

STUDENTS' HEADQUARTERS

**HIGH POINT COLLEGE BOOK STORE**

Books—School Supplies—Refreshments

OFFICIAL COLLEGE RINGS AND JEWELRY

**J. W. SECHREST AND SON**

Since 1897

**AMBULANCE SERVICE**

Dial 3349





"FOR THE BEST IN BARBER WORK"  
**COMMERCE STREET BARBER  
SHOP**

Phone 44219

119 E. Commerce St.

A Thorough School Devoted to the Instruction  
of Dancing

**DAVID CHAUNS DANCING  
STUDIO**

124 I-2 N. Main Street

Open Year 'Round

**WILLIAMS FLOWER SHOP**

Flowers For All Occasions

5-5931

Phones

3-5459

Compliments of

**HIATT TIRE COMPANY**

**HIGH POINT STEAM  
LAUNDRY**

Dry Cleaners and Dyers

PHONE 3325

**STUDENTS**

Welcome to Gibson's

781 N. Main

104 N. Main

329 N. Main

Compliments of

**W. A. DAVIS MILLING CO.**

Compliments of  
**EFIRD'S DEPARTMENT STORE**  
HIGH POINT, N. C.

Compliments of

**PRINCESS CAFE**

**BERRY COAL COMPANY**

GREENSBORO, N. C.

Quality Coal, Coke, Fuel Oil and Combustioneer  
Stoker

**MANN'S**

CUT-RATE DRUG STORE

HIGH POINT, N. C.  
GREENSBORO, N. C.  
THOMASVILLE, N. C.

KANNAPOLIS, N. C.  
REIDSVILLE, N. C.  
BURLINGTON, N. C.

Try O & C Frosted Fruits and Vegetables  
**W. I. ANDERSON & CO.**

Wholesale Distributor

Greensboro, N. C.

**CLOVER BRAND DAIRIES**

Incorporated

PASTEURIZED PRODUCTS

Phone 4553

MILK

BUTTER

ICE CREAM

Compliments of  
**PEGGY ANN SHOPPE**

Compliments of  
**HIGH POINT BARBER SHOP**

6 Barbers to Serve You

300 N. MAIN STREET



DRINK

*Coca-Cola*

IN BOTTLES

COCA-COLA BOTTLING COMPANY

OF HIGH POINT

SARTIN DRY CLEANING CO.

Dial 4501

1670-76 Eng. St.



DUTCH LAUNDRY, INC.

Dial 3319

829-33 S. Main St.

GRACE  
FLOWER SHOP

Dial 4085

MAIN AT WASHINGTON STREET

The Best in Flowers

FOR QUALITY DAIRY  
PRODUCTS

*Lindale*  
DAIRY CORP.

"It's Our Pleasure to Serve You"

WEST LEXINGTON AVE.

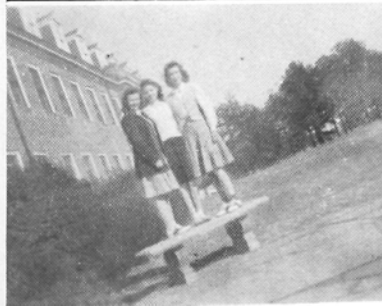
HIGH POINT, N. C.

The good will of men, women, and children who contact this organization casually or in business constitutes the principal asset which maintains it as a service institution. Our sincere desire to serve our many patrons well and unselfishly is widely recognized and our ability to do this is established.



HIGH POINT, THOMASVILLE  
& DENTON RAILROAD CO.

"Nothing But Service to Sell"



THE  
PHOTOGRAPHS

IN THIS ANNUAL  
WERE MADE BY

Daniel and Smith  
Studios

134 Fayetteville Street

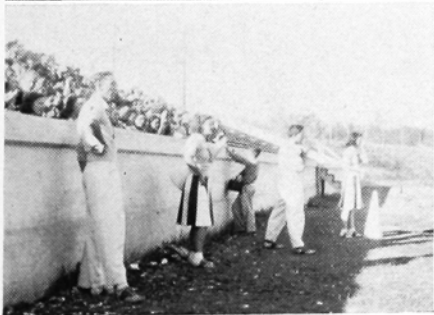
Raleigh, North Carolina



FINE PORTRAITS  
PROMPT SERVICE



Largest College Annual  
Photographers In The South





# Achievement



~ ACHIEVEMENT IN ANY LINE  
OF ENDEAVOR IS THE NATURAL  
RESULT OF ABILITY AND  
EXPERIENCE, PLUS OPPORTUNITY.  
~ THIS ORGANIZATION TAKES PRIDE  
IN ITS SUCCESS ~ SUCCESS EARNED  
BY THE ABILITY OF ITS MEMBERS,  
THE EXPERIENCE GAINED IN  
TWENTY YEARS OF EFFORT, AND  
THE OPPORTUNITIES OFFERED BY  
ITS CLIENTS.

CHARLOTTE ENGRAVING  
COMPANY INC.

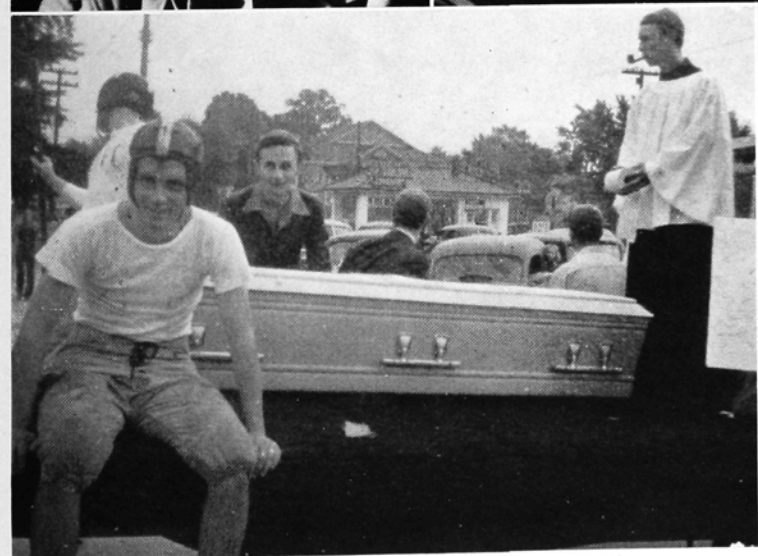
ARTISTS- PHOTO-ENGRAVERS-DESIGNERS

CHARLOTTE  
NORTH  
CAROLINA

ESTABLISHED NINETEEN FIFTEEN







**World's Largest Publishers**

THIS BOOK DESIGNED AND PRINTED BY

*Benson*

PRINTING COMPANY ☆ NASHVILLE

**of College Annuals**

*Autographs*

*Autographs*

