



THE ZENITH

1944

The Zenith



The

PUBLISHED BY
THE STUDENT
BODY OF THE

HIGH POINT
HIGH POINT,

Zenith

DOROTHY LEE USHER

Editor

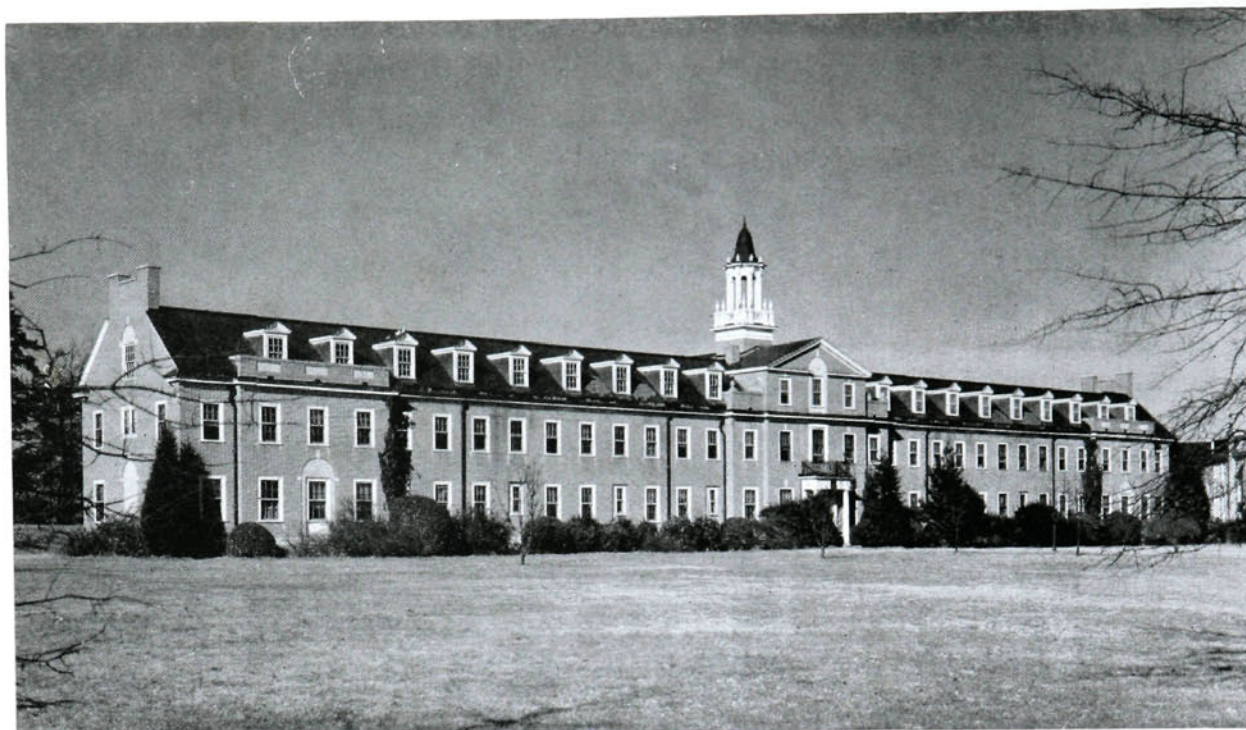
WILLIS GUPTON

Business Manager



COLLEGE

NORTH CAROLINA



Foreword

In these years when we are surrounded by the grimness of war and our utmost efforts must be expended in doing our share toward winning first the war and then a lasting peace, it is wonderful to know that there is still a place where youth can strive to do all that, and at the same time play, dance, and be happy. This is our college.

A college year is a thing to be treasured in the minds of people—young and old—so keep this book and look at it often now while you

are young, and in later years, when you want to look back over your college days, take it out, dust it off, and enjoy an hour or two of reminiscence

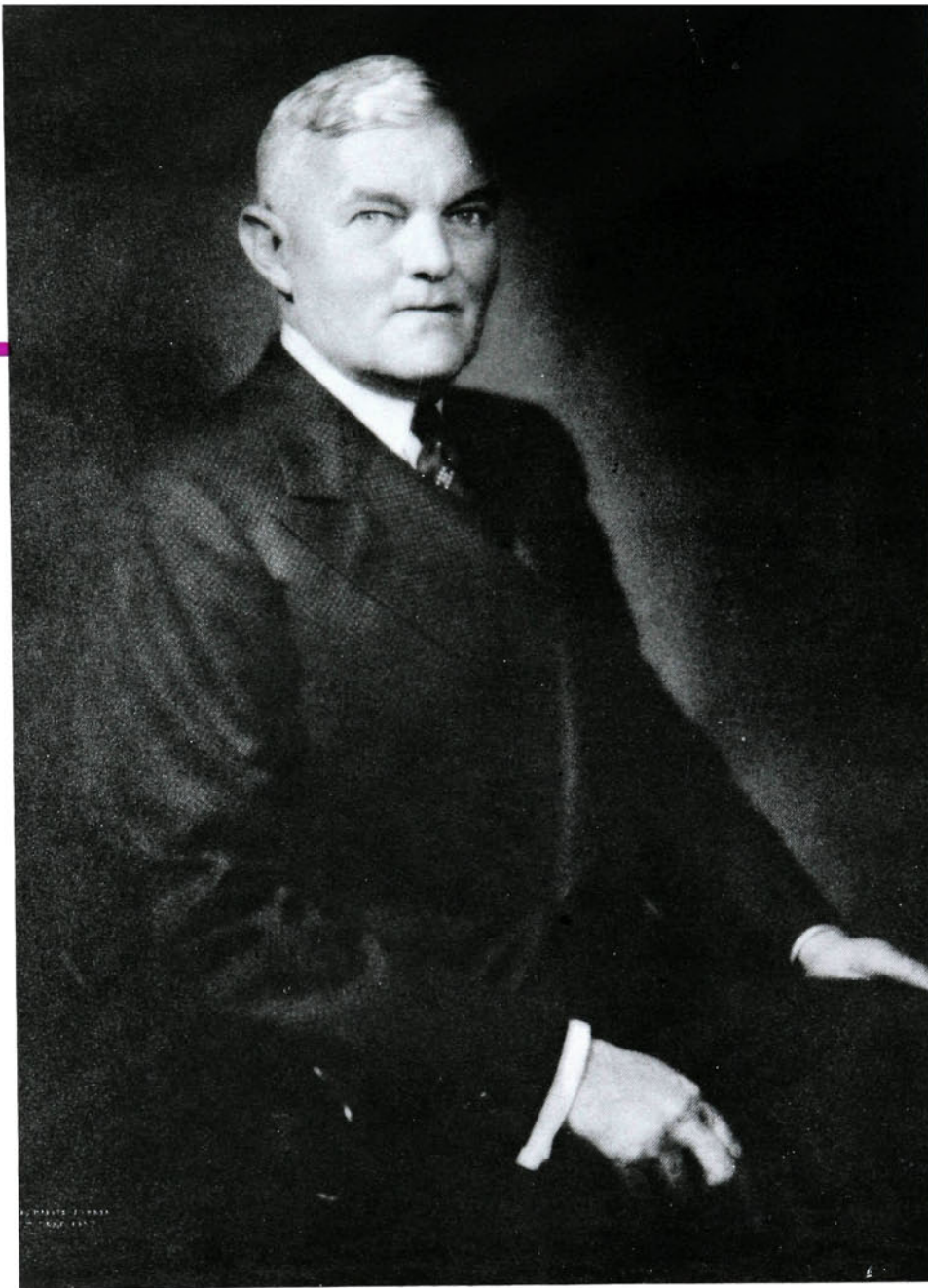
In these pages we, The Staff, hope to capture some of the memories of your college life which you will cherish through the years to come. We have been informal in the arrangement of this annual, but we are serious in the hope that it will serve well its purpose—that of bringing to you a pictorial record of the year.

With this purpose in mind we present to you your own yearbook—The Zenith of 1944.

The Editor.

PAGE 5





J. ED MILLIS

DEDICATION

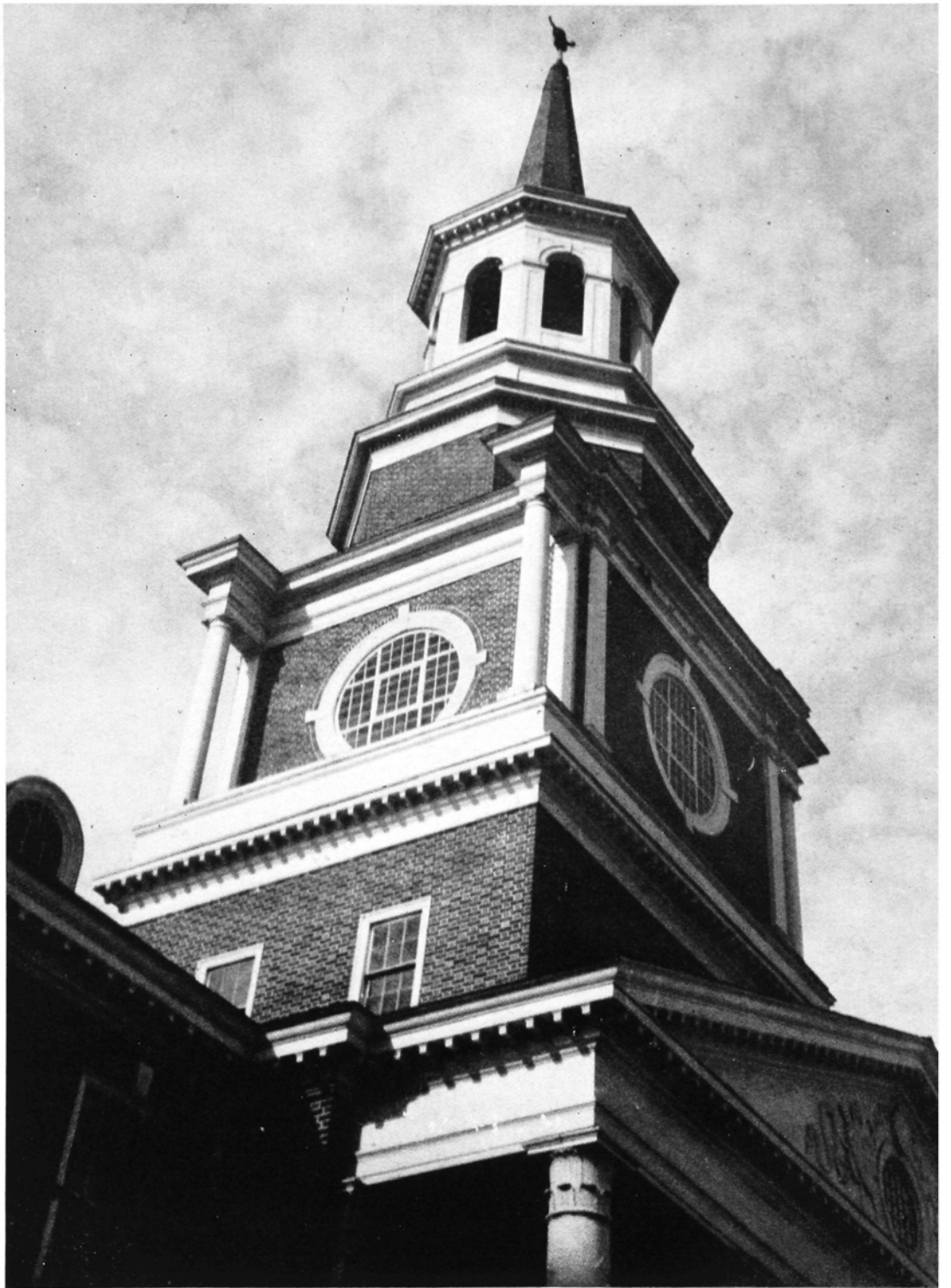
Fortunate is the community which counts as its greatest assets—MEN!

The Senior Class of High Point College appraises J. ED MILLIS and names him outstanding Industrialist, Civic Leader, Loyal Churchman and one of the First Citizens of Guilford County.

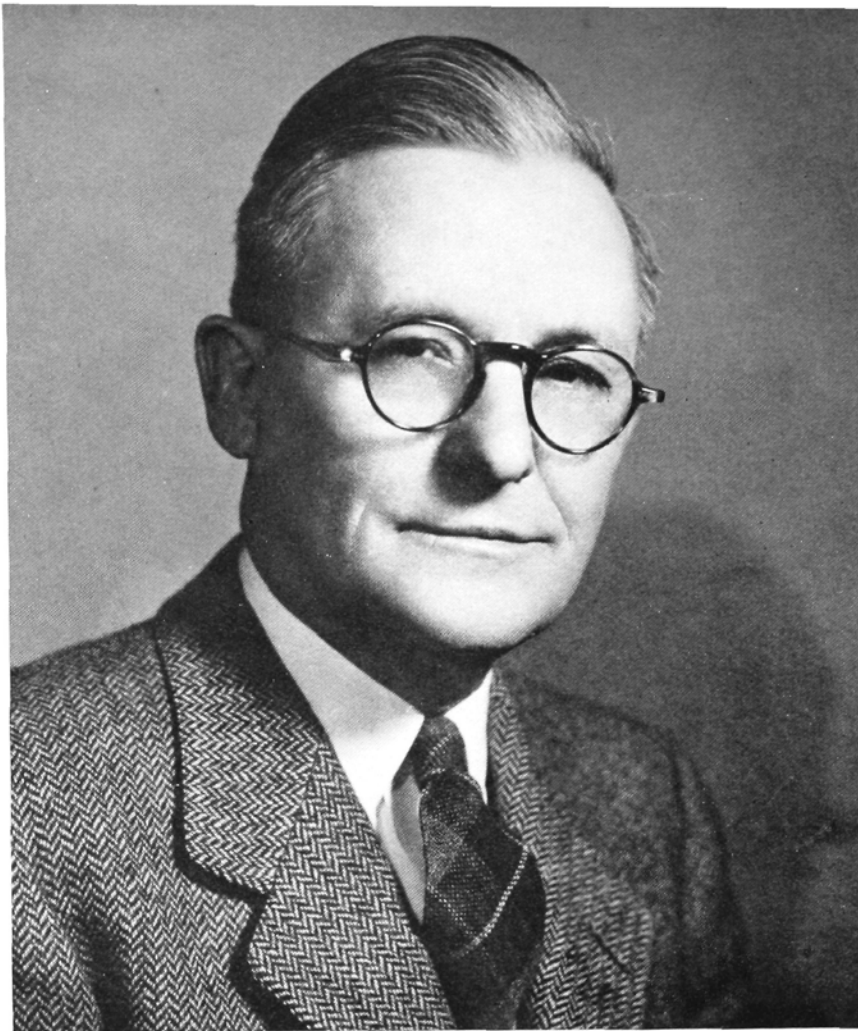
To this friend of good causes we dedicate

The 1944 Zenith

• **THE COLLEGE**



ROBERTS HALL



DR. GIDEON I. HUMPHREYS
President

BOARD OF TRUSTEES

RESIDENT BISHOP CHARLOTTE AREA..... Clare Purcell, D.D.
 PRESIDENT OF HIGH POINT COLLEGE Dr. G. I. Humphreys, D.D.
 W. A. Lambeth, C. K. Proctor, H. F. Hunsucker, C. C. Robbins, Jr., Charles W. McCrary,
 J. E. Pritchard, Mrs. M. J. Wrenn.
 Mrs. C. F. Finch, F. Logan Porter, J. M. Millikan, J. D. Williams, Mrs. Katie Rankin.
 G. Ray Jordan, Horace S. Haworth, H. A. Millis, G. H. Kearns, J. Clyde Auman, B. K. Milloway,
 Ernest W. Teague.
 Paul N. Garber, C. A. Dillon, S. W. Taylor, N. M. Harrison, L. F. Ross.

OFFICERS

H. A. Millis, President High Point, N. C.
 F. Logan Porter, Vice President High Point, N. C.
 N. M. Harrison, Sec.-Treas. High Point, N. C.

COMMITTEES

EXECUTIVE COMMITTEE: H. A. Millis, Chairman; F. Logan Porter, H. F. Hunsucker, G. H. Kearns, Horace Haworth, G. I. Humphreys.
 BUILDING AND GROUNDS: Mrs. C. F. Finch, Chairman; E. W. Teague, B. K. Milloway, C. W. McCrary, L. F. Ross, Mrs. Katie Rankin.
 FACULTY: G. I. Humphreys, Chairman; S. W. Taylor, J. E. Pritchard, Paul N. Garber.
 HONORARY DEGREES: J. C. Auman, Chairman; W. A. Lambeth, C. K. Proctor, J. M. Millikan, J. D. Williams.
 ENDOWMENT: C. C. Robbins, Jr., Chairman; C. A. Dillon, G. Ray Jordan.

NATHANIEL M. HARRISON, A.B., B.D., D.D.
Vice President

LOUISE ADAMS, A.B., A.M.
Asst. Prof. Mathematics

J. HOBART ALLRED, A.B., A.M.
Professor of Modern Languages



HELEN R. BARTLETT, A.M., Ph.D.
Professor of History

ALDA T. BERRY, A.B., M.A.
Instructor Business Administration

CARRIE BRITAIN, A.B., B.S. IN L.S.
Librarian



ELIZABETH JO CHAPMAN, B.S., M.A.
Director Physical Education for Women

CARL G. N. CRONSTEDT, B.M., Ed.M.S. IN Ed.
Instructor Music

EDMUND O. CUMMINGS, B.S., Ph.D.
Professor of Chemistry



E. BARTON DULAC, B.S., M.A.
Associate Professor Business Administration

ERNESTINE FIELDS, B.Mus., B.S., M.Mus.

SEYMOUR FRANKLIN, A.B.
Instructor Physical Education and Mathematics



R. HOWARD GUNN, A.B.
Instructor, Business Administration

IDYL HARVILLE
Dietitian

BENJAMIN H. HILL, M.S., Ph.D.
Professor of Biology



THE FACULTY



CLIFFORD REGINALD HINSHAW, A.M., LITT.D.
Professor of Education and Psychology

E. VERA IDOL, A.B., A.M.
Professor of English

ADA B. JOHNSON, B.S., M.S., M.A.
Head of Home Economics Department



LUCILE JOHNSTON
Secretary to President

PERCY E. LINDLEY, A.M., LITT.D.
Professor of Religious Education

A. C. LOVELACE, A.B., M.ED.
Assistant Professor of Education



MRS. MABEL MILLIKAN
Social Director

J. HARLEY MOURANE, B.S., M.S.
Professor of Chemistry and Physics

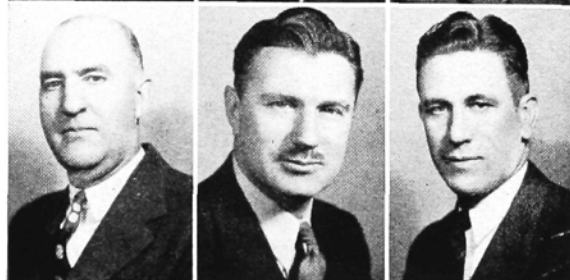
G. M. NICHOLS, B.ED.
Instructor of Physics



FRANKLIN RIKER
Instructor in Voice

R. L. WEAVER
Asst. Prof. of Mathematics

ALICE PAIGE WHITE, A.B., A.M.
Professor of Greek and Latin



ARTHUR S. WITHERS, A.B., M.A.
Professor of English

NATHANIEL P. YARBROUGH, A.B., A.M.
Professor of Modern Languages

C. VIRGIL YOW, A.B.
Director of Physical Education for Men

FRANK L. FERNENDEZ, B.S.
Instructor Physical Education

THE FACULTY

CLASS OFFICERS

SENIOR

CHARLES COFFEY, President
DOROTHY KOONTZ
ENOLA SUE FLOWERS
LILLIAN SELF



JUNIOR

WANONA RASH
NANCY ISENHOUR, President
DAMARIS TAUSSIG



SOPHOMORE

ANNE PAQUET, President
MARJORIE PAYNE
HELEN PIERCE
RUTH HENDERSON



FRESHMAN

D. C. FREEMAN, President
ANNALEE FERGUSON
HARRY JORDAN
JACK MORRIS



Seniors

MILDRED ALLEN
 B.S.
 High Point, N. C.
 W.A.A., 1, 2, 3, 4; Vice President, 3;
 Secretary, 4; Future Teacher's Club, 3;
 Nikanathan Literary Society, 1-2; Gamma
 Club, 3.

ELOISE STONE CECIL
 A.B. Alpha Theta Psi
 High Point, N. C.
 Hi-Po Staff, 3; Nikanathan Literary
 Society, 1-2; W.A.A., 2; Honor Roll,
 1, 2, 3, 4; Future Teacher's Club, 3, 4;
 College Marshal, 3; Day Student Council,
 2, 3; Pan-Hellenic Council, 4;
 Who's Who.

NAN CLAPP
 B.S. in Business Administration
 Sigma Alpha Phi
 High Point, N. C.
 Woman's College, U. N. C., 1; Artemesian
 Literary Society, 2; Miss High
 Point College, 3; Hi-Po, 4.

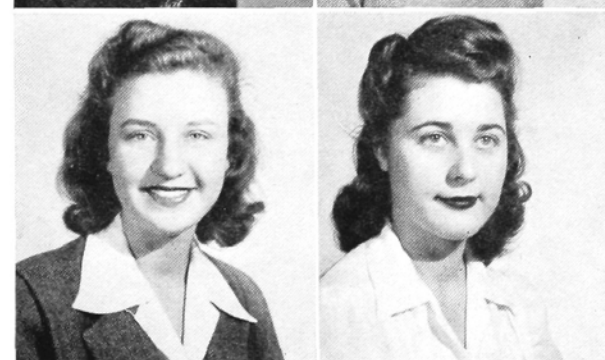
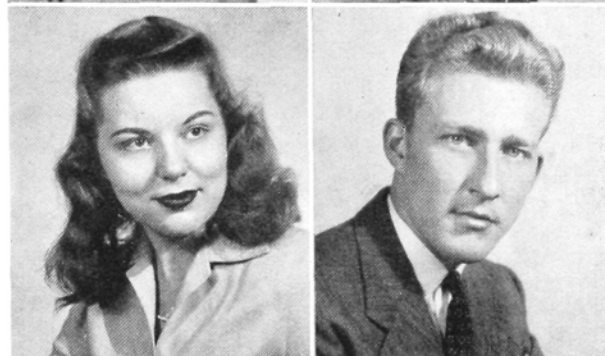
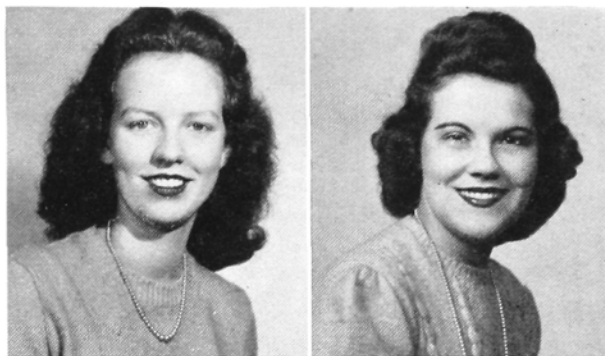
CHARLES C. COFFEY
 A.B. Delta Alpha Epsilon
 Hewlett, Virginia
 President of Senior Class, 4; Pan-Hel-
 lenic Council, 4; Advertising Manager
 of Hi-Po, 3; Hi-Po Staff, 1-2; Zenith
 Staff, 1, 2, 3; Ministerial Association,
 1, 2, 3, 4; Choir, 1-2; Footlighters' Club,
 1-2; Thalean Literary Society, 1, 2, 3, 4.

CLYDE COLLINS
 A.B. Delta Alpha Epsilon
 Troutman, N. C.
 President of Christian Student Move-
 ment, 4; Religious Council, 3; Senior
 representative to Student Council, 4;
 Who's Who, 4; Brevard Junior College,
 1, 2; Ministerial Association, 4.

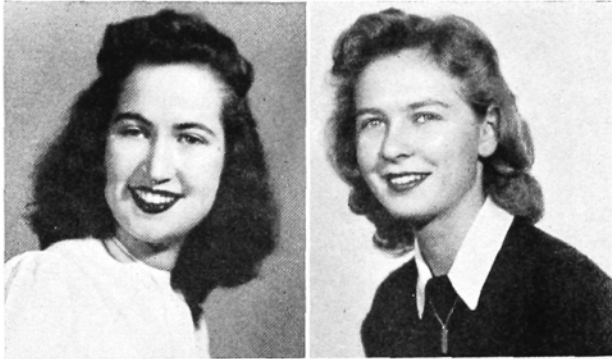
KATHERINE CRANFORD
 B.S. in Business Administration
 High Point, N. C.
 Alpha Theta Psi Sorority, secretary,
 3-4; Future Teachers, 3-4; Footlight-
 ers' Club, 1-2; Artemesian Literary
 Society, 1-2; Hi-Po, 1.

KATHRYN CROSS
 A.B. Alpha Theta Psi
 High Point, N. C.
 Hi-Po, 2, 3, 4; Choir, 2, 3, 4; Artemesian
 Literary Society, 2; Square Dance
 Club, 2; W.A.A., 2, 3, 4; Gamma Club,
 3; Future Teacher's Club, 3, 4; Re-
 ligious Council, 4; Zenith, 4; Day
 Student Council, 4; International Re-
 lations Club, 4; Marshal, 4; Order of
 The Lighted Lamp, 4; Honor Roll,
 1, 2, 3, 4.

JOHNSIE FARLOW
 B.S. in Business Administration
 Sophia, N. C.
 Appalachian, 1, 2; W.A.A., 3, 4.



SENIORS



ELLA NELL FLETCHER
 B.S.
 Winterville, N. C.
 E. C. T. C., 1; Nikanathan Literary Society, 2; I. R. C., 4.

ENOLA SUE FLOWERS
 B.S. Theta Phi
 New Bern, N. C.
 International Relations Club, 4; Nikanathan Literary Society, Footlighters' Club, 1; Gamma Club, 2; Band, 1, 2; W.A.A., 1, 2, 3, 4; Pres., 4; Hi-Po, 4; Vice President of Senior Class; Cheerleader, 4; Senior Superlative; Candidate for May Queen.



GRACE MAE FRAZIER
 A.B.
 High Point, N. C.
 The University of North Carolina, 1, 2, 3.

RAYMOND FREEMAN
 Iota Tau Kappa
 Winston-Salem, N. C.
 Pan-Hellenic Council, 4; Senior Superlative; Chemical Engineers Club, 1, 2; Honor Roll, 1, 4; Football, 1, 2, 3.



LUCY HORTENSE FUTRELLE
 B.S. in Home Economics
 Pendleton, N. C.
 Alpha Theta Psi; Chowan Junior College, 1, 2; Choir, 1, 2; Modern Priscilla Club, 4; Treasurer, 4.

EDITH MAE GLIDEWELL
 A.B. Sigma Alpha Phi
 Mayodan, N. C.
 Artemesian Literary Society, 1, 2; Gamma Club, 3.



WILLIS GUPTON
 B.S. in Business Administration
 Hollister, N. C.
 Louisburg College, 1, 2; Zenith, 3; President of Student Government, 4; President of Boy's Dormitory, 4; Business Manager of Zenith, 4; Who's Who, 4; Senior Superlative; Social Committee, 4.

NELL HARTMAN
 A.B. Sigma Alpha Phi
 Advance, N. C.
 Artemesian Literary Society, 1, 2.

SENIORS

LUCILE GARNETT HINSHAW
B.S. Theta Phi

High Point, N. C.
Honor Roll, 1, 2, 3, 4; Nikanathan
Literary Society, 1; Gamma Club, 2, 3;
Treasurer, 3; W.A.A., 1, 2, 3, 4;
Treasurer, 4; Student Government
Representative, 4; Treasurer, 4; Class
Vice President, 2; Zenith Staff, 3, 4;
Medical Club, 2, 3; Pan-Hellenic Coun-
cil Secretary, 4; I.R.C., 4; College
Marshal, 3; Who's Who; The Lighted
Lamp, 4; Future Teachers' Club, 4;
Senior Superlative.

FRANCES HOLTON
A.B. High Point, N. C.

CLARICE HOOVER
B.S. in Home Economics
Sigma Alpha Phi
Asheboro, N. C.
Nikanthan Literary Society, 1, 2;
Modern Priscilla, 1, 2, 3, 4; Secretary,
4; Hi-Po Staff, 1; Gamma Club, 3;
Future Teachers' Club, 4; Interna-
tional Relations Club, 4, President, 4;
Girls' Dormitory Council, 4, President,
4; Social Committee, 4; Student Gov-
ernment, 4.

SCHALLERT MYMALEE HOWARD
A.B. Sigma Alpha Phi
Winston-Salem, N. C.
A. S. T. C., 1; W.A.A., 3; Honor Roll,
2, 3; Gamma Club, 2; Future Teachers'
Club, 2; Zenith, 3; I.R.C., 3.

MARTHA ELIXABETH HOWELL
A.B. Charlotte, N. C.

NORWOOD LEE JONES
Clayton, N. C.

FRED ALBERT KAPPELMAN, JR.
Lynbrook, N. Y.

MABLE AILENE KIRKMAN
A.B. Greensboro, N. C.
Nikanthan Literary Society, 1; W.C.
U.N.C., 2; Future Teachers' Club, 3,
4; Sec. Treas., 3; Choir, 3, 4; Vice
Pres., 4; International Relations Club,
4; Girls' Dormitory Council, 4; Re-
ligious Council, 4.



SENIORS



DOROTHY KOONTZ
 A.B. Sigma Alpha Phi
 Lexington, N. C.
 W.A.A., 2, 3; Treasurer, 3; Nikanthen
 Literary Society, 1; Future Teachers'
 Club, 3; Gamma Club, 2; Class Secre-
 tary, 3; Honor Roll, 3; Candidate for
 May Queen.

BONNIE LEWIS
 B.S. in Business Administration
 Sigma Alpha Phi
 High Point, N. C.
 Artemesian Literary Society, 1; Foot-
 lighters' Club, 1; Riding Club, 2;
 Honor Roll, 2; Zenith, 2, 3; Marshal, 3;
 Secretary of Student Body, 4; Pan-
 Hellenic Council, 4; Senior Superlative;
 Candidate for May Queen.

J. G. LONG, JR.
 B.A. Seaboard, N. C.
 Ministerial Association, 3; Chaplain, 3;
 Thalean Literary Society, 3; Honor
 Roll, 2, 3, 4; Secretary of Day Student
 Boys, 4.

JOHN THOMAS MAIDES
 B.A. Maysville, N. C.
 Thalean Literary Society, 2; Minis-
 terial Association, 2, 3, 4; Honor Roll,
 2; Choir, 2, 3, 4.

MARY MARGARET McNEILL
 B.S. in Home Economics
 Jonesboro, N. C.
 Pfeiffer Junior College, 1, 2; Modern
 Priscilla Club, 3, 4.

HELEN MEREDITH
 A.B. Trinity, N. C.
 The Lighted Lamp, 3; Marshal, 3;
 Secretary of Religious Council, 3; Inter-
 national Relations Club, 3; Honor Roll,
 2, 3.

LILLIE MAE MOORE
 B.S. in Business Administration
 High Point, N. C.
 W.A.A., 1, 2, 3, 4; Sgt. at Arms, 2;
 Nikanthen, 1, 2; Future Teachers, 3;
 Honor Roll, 1, 2, 3, 4; The Lighted
 Lamp, 4.

ETHEL NORTON
 B.S. in Physical Education
 San Antonio, Texas
 W.A.A., 1, 2, 3, 4; Tennis Team, 1, 2;
 Honor Roll, 3, 4; Gamma Club, 3;
 Senior Superlative; Future Teachers,
 3, 4.

SENIORS

JOHN EDWARD PERRY
B.S. in Chemical Engineering
Enfield, N. C.



MARGARET NELL PRICE
A.B.
Kannapolis, N. C.
W.A.A., 4; Nikanathan Literary Society,
1, 2; Gamma Club, 5; Future Teachers'
Club, 4; Hi-Po, 4; International Relations
Club, 4; Zenith, 4.

LILLIAN SELF
A.B. Sigma Alpha Phi
Casar, N. C.
W.A.A., 1; Nikanathan Literary Society,
1; Gamma Club, 2; Future Teachers'
Club, 2, 3, 4; Honor Roll, 1, 2, 3, 4;
Class Treasurer, 4; The Lighted Lamp,
4.



WALTER T. SINK, JR.
B.S. Delta Alpha Epsilon
High Point, N. C.
Band, 1; Chemical Engineers Club,
1, 2, 3, 4; Soccer, 2.

CLIFFORD EUGENE STALEY
B.S. in Chemical Engineering
High Point, N. C.



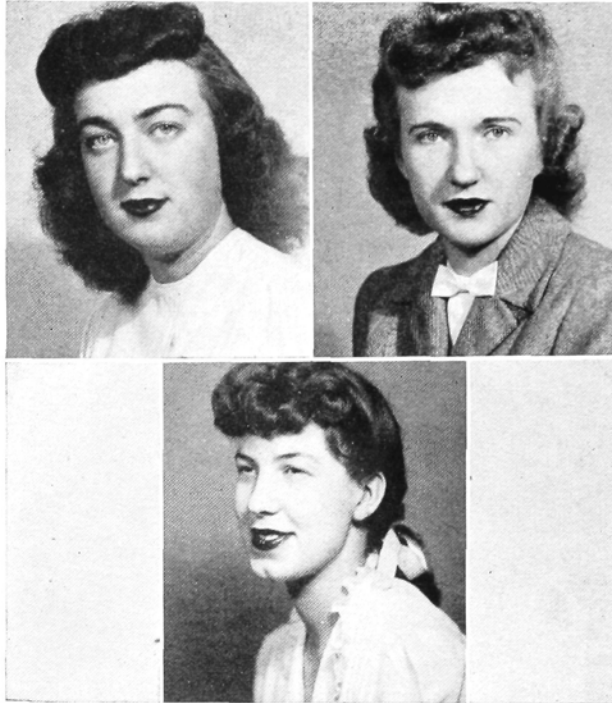
ROY FRANKLIN SWINK
Lexington, N. C.

DOROTHY LEE USHER
A.B. Theta Phi
Toledo, Ohio
Footlighters' Club, 1; W.A.A., 1, 2, 3,
4; Nikanathan, 1, 2; Gamma Club, 5;
Vice President, 5; Girls' Dormitory
Council, 5, 4; Secretary, 5; President, 4;
Honor Roll, 1, 2, 3, 4; Hi-Po, 3, 4;
Zenith, 3, 4; Editor, 4; Class Secretary,
5; Marshal, 5; I. R. C., 4; Who's Who,
4; Senior Superlative.

AGNES LOIS WARD
B.S. Tobacoville, N. C.
Brevard College, 1, 2; Choir, 5, 4;
Modern Priscilla, 3, 4; Vice President,
4; President, 4; Future Teachers' Club,
4; International Relations, 4.



SENIORS



NANCY ELLEN GRAY WATSON
 A.B. Pinnacle, N. C.
 Appalachian State Teachers College, 2;
 A Capella Choir, 3; W.A.A., 3; Future
 Teachers' Club, 3; Honor Roll, 4;
 Senior Superlative.

RUTH NELSON WOOD
 A.B. Sigma Alpha Phi
 Dobson, N. C.
 A.S.T.C., 1; Gamma Club, 2; Future
 Teacher's Club, 2, 3; Zenith, 3; I. R.
 C., 3.

SUE WOODRUFF
 B.S. Theta Phi
 Walnut Cove, N. C.
 Nikanathan Literary Society, 1; Gamma
 Club, 2; Footlighters' Club, 1, 2;
 Honor Roll, 2, 4; Hi-Po Staff, 2, 3;
 Student Government, 2, 3; Vice Presi-
 dent, 3; Junior Representative, 3;
 Zenith Staff, 2; Who's Who.

Seniors not shown: Hillard Bunn Ballard, Concord, N. C.; Joseph Kent Bostick, Raleigh, N. C.;
 Jessie McNeill Crutchfield, Burlington, N. C.; Mildred I. Jones, High Point, N. C.; Judy Prim,
 High Point, N. C.; Patsy Lee Sifford, Stanley, N. C.; Lula Preston Smith, High Point, N. C.

SENIORS



First row: John Aycock; Edith Crouse Bailey, Advance, N. C.; Elsie Sharpe Barnhill, Enfield, N. C.; Blanche Alice Baxter, Fallston, N. C.; Mittie Lou Bell, High Point, N. C.

Second row: Thelma Lucille Carlberg, Roselle, N. J.; John William Carter, High Point, N. C.; Nancy Cornelia Clayton, Lexington, N. C.; Eunice Clough, Riverwood, Md.; Mary Ann Coe, High Point, N. C.

Third row: Virginia Lucille Cohen, Concord, N. C.; Helen F. Colley, Wentworth, N. C.; Billie Ruth Frazier, High Point, N. C.; Irna Miller Freedman, Bayonne, N. J.; Blanche Glover, Newsom, N. C.

Junior Class



First row: Emma Lois Hahn, Greensboro, N. C.; Melton Edward Harbin, High Point, N. C.; Margaret Hancock, High Point, N. C.; Virginia Mae Hudgins, Winston-Salem, N. C.; Margaret Ruth Hull, Cherryville, N. C.

Second row: Frances Josephine Ingram, High Point, N. C.; Nancy Lou Isenhour, New London, N. C.; Joseph Stephen Johnson, High Point, N. C.; Betty Deane Knox, High Point, N. C.; Marguerite Evelyn Koontz, Lexington, N. C.

Third row: James Leach; Agnes Catherine Minnis, Hillsboro, N. C.; George Thomas Nostrand, Freeport, N. Y.; Ruby Cornelia Parker, High Point, N. C.; Don Payne, High Point, N. C.

JUNIOR CLASS



First row: John Murchison Peele, Rich Square, N. C.; Robert Carroll Porter, Skokie, Ill.; Sarah Wanona Rash, Union Grove, N. C.; Lena Sale, Elkin, N. C.; Betty Veigh Smith, High Point, N. C.

Second row: Hilda Margarett Smith, Chapel Hill, N. C.; Nell Arlene Steelman, Yadkinville, N. C.; Damaris Taussig, Tuckahoe, N. Y.; Ava Neil Taylor, High Point, N. C.; Dina Joyce Taylor, High Point, N. C.

Third row: John Floyd Taylor, High Point, N. C.; Joseph Marion Taylor, Jr., Statesville, N. C.; Mildred Elizabeth Wagoner, High Point, N. C.; Betty Marie Welch, High Point, N. C.; Blanche Alma White, High Point, N. C.

JUNIOR CLASS

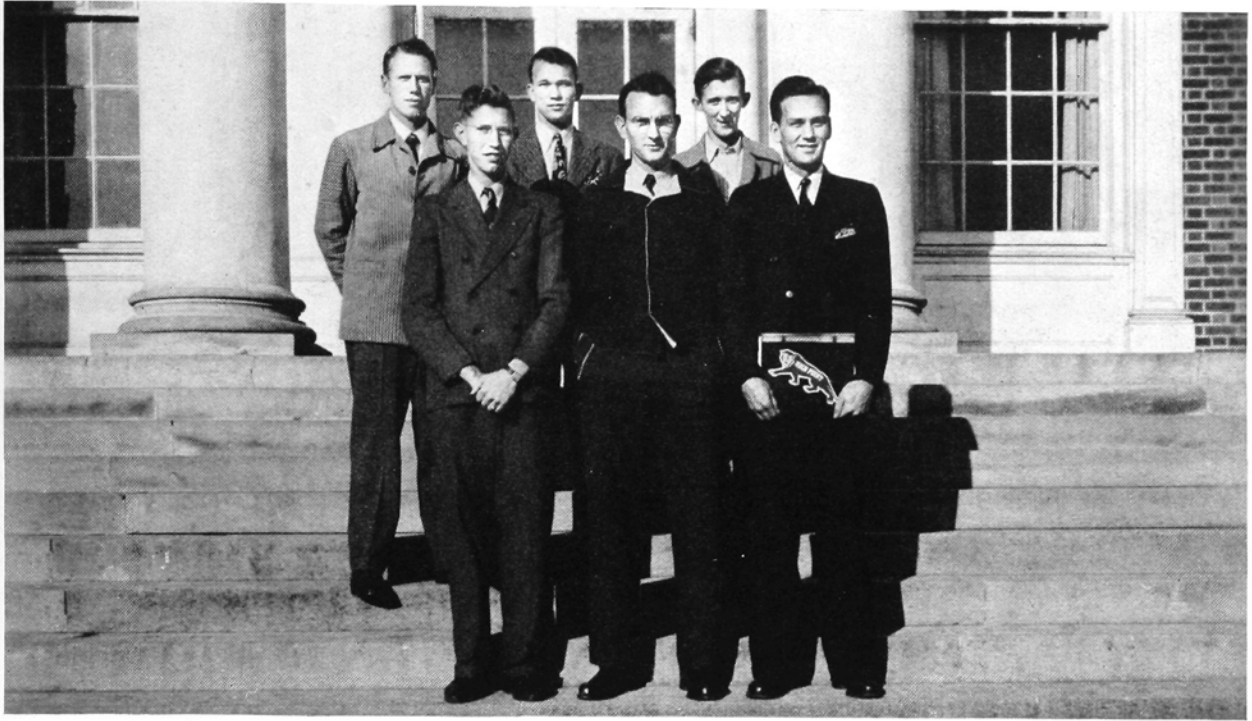


Aldridge, Maxine
Allred, Clara Belle
Bryant, Peggy
Canady, Mary Frances
Fogle, Edith
Folger, Julia Lois
Freeland, Lula Bryan
Harville, Cornelia Margaret

Henderson, Alma Ruth
Hutchens, Sarah Elizabeth
Inscore, Nellie Gray
Jacobs, Ethel Joyce
King, Sara Gilbert
King, Betsy York
Miller, Blanche Marie
Paquet, Anne Jewel

Payne, Marjorie
Pierce, Helen Ivetta
Rose, Evelyn Florida
Rothrock, Doris
Steidley, Phyllis Anne
Sherrill, Mary Lucille
Thomas, Julia Elizabeth

SOPHOMORE GIRLS



Ahl, Jack Edward
Allen, James Albert
Auman, James Albert

Brown, John Lester
Foster, Jack Eller
Jamieson, Herbert Morehouse
Koonce, Arnold Jackson

Lanier, Hoyles Glenn
Leach, James Moore
Warlick, Raymond Aubery

SOPHOMORE BOYS



Avalon, Gloria Frances
 Auman, Alice Ruth
 Allred, Margaret
 Anderson, Elizabeth
 Bass, Sara Louise
 Bailey, Irene Lawrence
 Beatty, Barbara Ann
 Brown, Carolyn Faith
 Bennett, Jane Delores
 Bingham, Irma Leigh
 Boyles, Prue Rebecca
 Bodenheimer, Nancy Joyce
 Boozer, Lila Faye
 Brooks, Norma Mae
 Bundy, Ruby Henrietta
 Burton, Beverley Mae
 Cagle, Wincie Meadows
 Coffin, Tharessa Lea
 Coggin, Mildred
 Carroll, Martha Barbara
 Cress, Elsie Pearl
 Davis, Joyce Gwendolyn
 Dodamead, M. Eleanor
 Doggett, Nancy Louise
 Ellison, Betty Hill

Ferguson, Annalee Etta
 Ferguson, Edna Elise
 Foust, Pearl Annie
 Fuller, Mary Elizabeth
 Gamewell, Mary Frances
 Gardner, Mary Blair
 Gibson, Geneva Alvis
 Grove, Edna Harriet
 Hedgecock, Mary Ann
 Hartman, Nan Volger
 Hoggard, Edna Marie
 Hough, Barbara Elizabeth
 Hemphill, Nora Frances
 Joyce, Claudia Louise
 Johnson, Helen Marie
 Jackson, Victoria Bernice
 Johnston, Carolyn Swaim
 Kearns, Marjorie
 Kearns, Carlene Elizabeth
 Kernodle, Verna Lee
 Kile, Dorothy Belle
 Leonard, Kathryn Christine
 Long, Inez Gay
 Macon, Ellen Halsey
 Martin, Frances Cornelia

Mickey, Patsy Ruth
 Moser, Maria Antoinette
 Myers, Jewel Catherine
 Myers, Betty Reid
 McGhee, Phyllis Winona
 Olsen, J. Marie
 Osborne, Pauline Matilda
 Patterson, Mae Ola
 Piper, Mary Sue
 Price, Adelle
 Ross, Margaret Rosemary
 Russell, Ruth Tucker
 Sebastian, Bettye Sue
 Slaydon, Mary Madelene
 Smith, Alice Rachel
 Spencer, Elva Jeanne
 Starkey, Ann Dudley
 Thompson, Margaret Christine
 Trott, Muriel Irma
 Upshaw, Florence Helena
 Ward, Betty
 Warren, Dorothy Evelyne
 York, Bertha Jeraleen

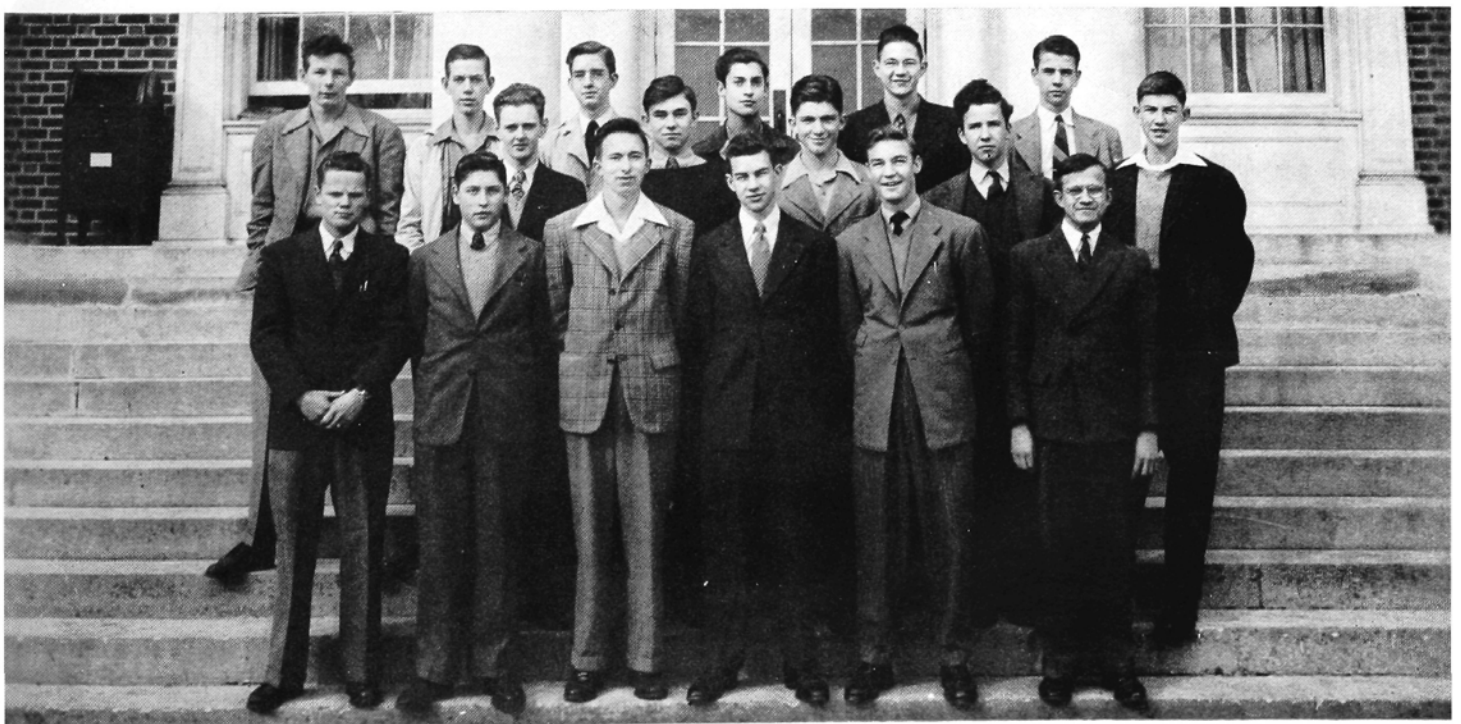
FRESHMAN GIRLS

FRESHMAN BOYS

Auman, Harvey Clyde
Blaylock, Norman Billy
Dawson, Irby Carson
Freeman, D. C.
Gunn, Raymond McCawley
High, Floyd Legrand
Hipps, Robert Harold
Hutchinson, Harold Eugene
Hoyle, John William
Jordan, Robert Harry
King, Graham William
Lawrence, John Louis
Lewallon, Worth McCleary
Marshall, Ralph

Morris, Terry Jackson
McPherson, Luther B.
Patterson, Richard Lee
Shields, Charles
Sink, Henry D.
Stoker, Lawrence Charles
Tuttle, Richard Martin
Warren, Clarence
White, John Henry
Williamson, Norvel Faires
Willard, Forrest Ray
Williams, Joe Eugene
Wyatt, Harold Walker

PAGE 27



- **ORGANIZATIONS**



WRENN LIBRARY



JOHN PERRY

WILLIS GUPTON

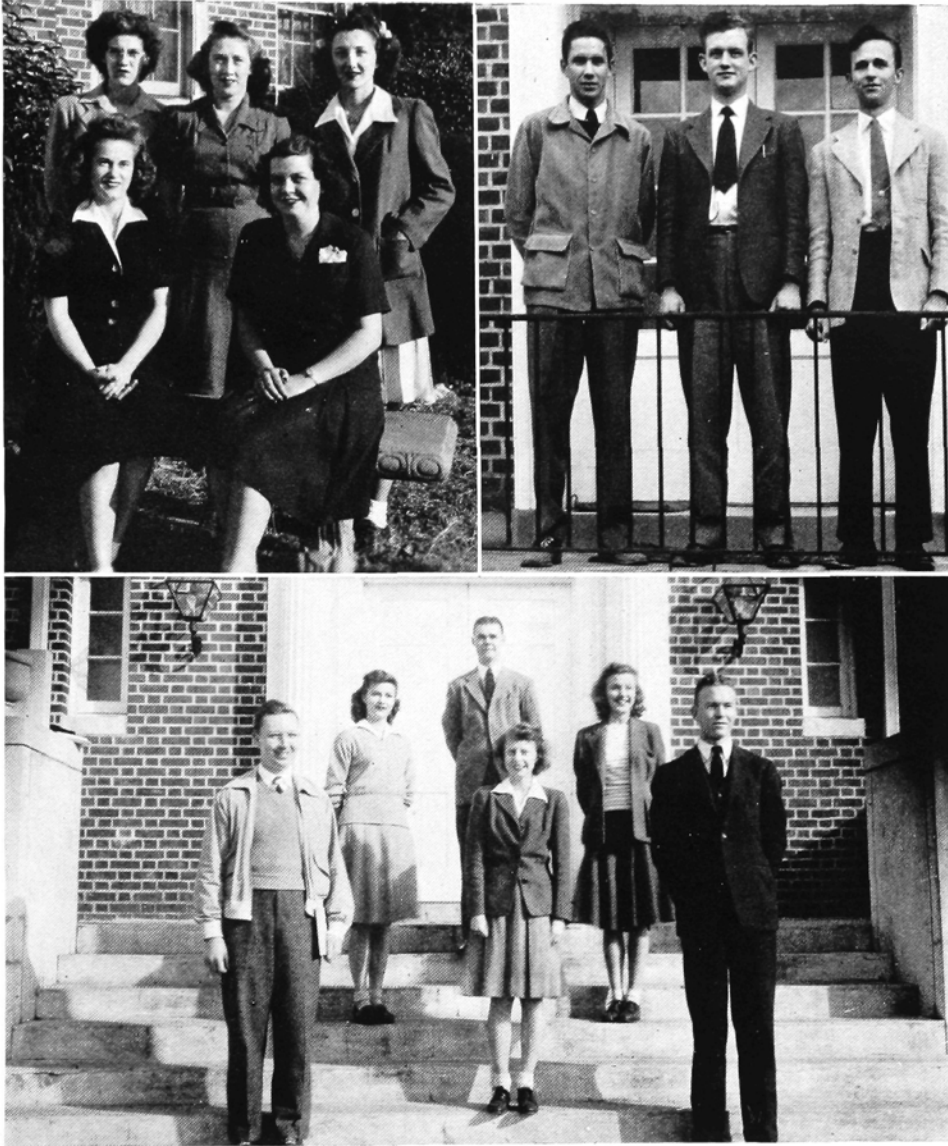
Student Government

To the Student Government go our praises for a year's work well done. The officers and the two representatives from each class serve as a link between the administration and the student body, and it is through them that our social activities are arranged and our student regulations formed.

Under the capable leadership of John Perry, who graduated in January, and Willis Gupton, who was elected to serve as president for the second semester, dances, teas, and formal dinners have made our social life on the campus delightful.

AUMAN, PATTERSON, HIN-
SHAW, LEWIS, GUPTON,
KING, FREDMAN,
KOONTZ, CROSS, CARTER





Upper left: Inscore, Hoover, Isenhour, Koontz, Kirkman.

Upper right: Gupton, Foster, Peele.

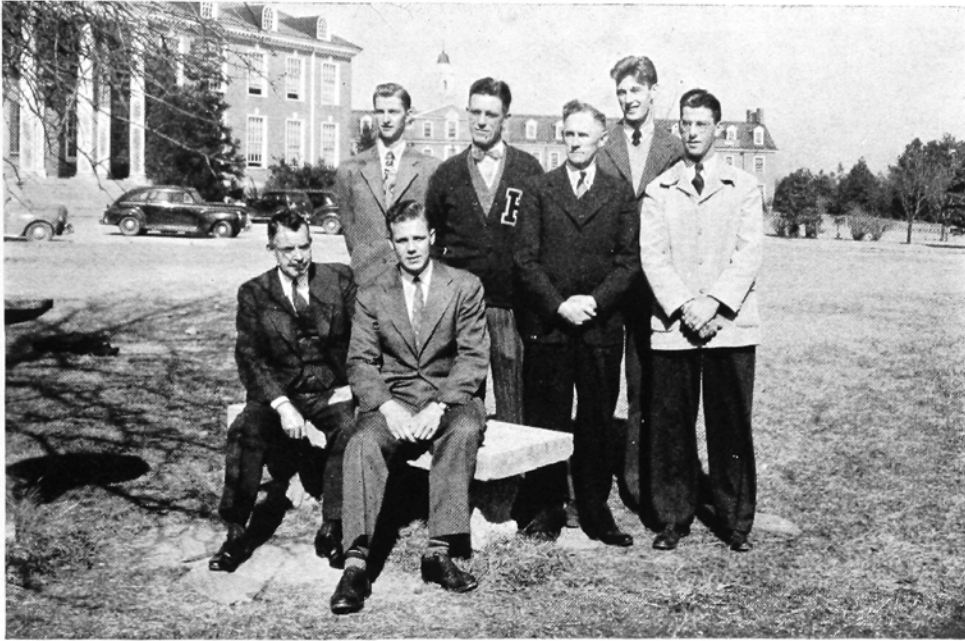
Bottom: Carter, D. Taylor, J. Taylor, Parker, Cross, Long.

Dormitory Government



Clara Belle Allred, Nan Clapp, Edith Glidewell, Nell Hartman, Clarice Hoover, Mymalee Howard, Ruth Hull, Nancy Isenhour, Dorothy Koontz, Marguerite Koontz, Bonnie Lewis, Wanona Rash, Lillian Self, Patsy Sifford, Ruth Wood. **Honorary members:** Dr. Helen Bartlett, Mrs. P. E. Lindley, Miss Vera Idol.

Sigma Alpha Phi



Jack Foster, Seymour Franklin, D. C. Freeman, Raymond
Freeman, George Nostrand, Bob Porter. **Honorary members:**
Dr. C. R. Hinshaw, O. A. Kirkman, Dr. P. E. Lindley, A. C.
Lovelace, C. V. Yow.

Jota Tau Kappa



Mary Ann Coe, Enola Sue Flowers, Julia Folger, Ruth Henderson, Garnett Hinshaw, Sarah King, Betty Deane Knox, Ann Paquet, Marjorie Payne, Lena Sale, Doris Setzer, Louise Smith, Damaris Taussig, Dorothy Lee Usher, Sue Woodruff. **Honorary members:** Miss Louise Adams, Miss Carrie Brittain, Mrs. N. M. Harrison, Mrs. N. P. Yarborough, Mrs. C. V. Yow.

Theta Phi



Eloise Cecil, Kathrine Cranford, Kathryn Cross, Billie Frazier,
Hortense Futrelle, Ruby Parker, Judy Primm, Dina Taylor.
Honorary members: Mrs. C. R. Hinshaw, Mrs. S. O. Peebles,
Mrs. Alice P. White.

Alpha Theta Psi



Harvey Auman, John Carter, Charles Coffey, Clyde Collins, Willis Gupton, Melton Harbin, Harold Hipps, Harry Jordan, Fred Kappelmann, James Leach, John Perry, Walter Sink, Joel Williams. **Honorary members:** J. H. Allred, Olin Blickensderfer, E. C. Glasgow.

Delta Alpha Epsilon



OFFICERS

President.....CLARICE HOOVER
Vice President.....MARY ANN COE
Secretary.....RUBY PARKER

The International Relations Club is a new organization on campus this year. Its charter enrollment was 32 members. Students from any class were eligible to join and be charter members in the new club under the supervision of Miss Carrie Brittain, advisor. The main purpose of the club is to establish favorable relations between races and nations, and to understand them better. Two conferences were held during the year, one at Statesville, and one at Greensboro. Delegates were sent to each of them from the club, and reports were given at club meetings on their return.

International Relations Club



OFFICERS

J. H. Allred.....Permanent Chairman
 Garnett Hinshaw.....Secretary

REPRESENTATIVES

Garnett Hinshaw.....	Theta Phi
Miss Louise Adams.....	Theta Phi
Bonnie Lewis.....	Sigma Alpha Phi
Dr. Helen R. Bartlett.....	Sigma Alpha Phi
Eloise Cecil.....	Alpha Theta Psi
Mrs. A. P. White.....	Alpha Theta Psi
Raymond Freeman.....	Iota Tau Kappa
Mr. A. C. Lovelace.....	Iota Tau Kappa
Charles Coffey.....	Delta Alpha Epsilon
Mr. J. H. Allred.....	Delta Alpha Epsilon

The Pan-Hellenic Council is the controlling body of the six Greek letter social clubs on the campus. This council, which consists of one student member and one faculty advisor from each club, provides active supervision of all the local Greek letter clubs on the campus. Their work includes the study of the constitution of the council in order that it may meet present needs, and the enactment and enforcement of regulations which concern all the clubs.

Pan-Hellenic Council



The cry, "Do I smell something burning?" is followed by a mad scramble to the Practice House kitchen to see how the pie is baking. The oven door opens to reveal a delicately browned apple pie. The girls (four seniors this year) gather around to set the table, and prepare one of the many meals they have in their six weeks' stay at the large white house on College Drive. Their routine runs smoothly, and each girl has her own duty in making the Practice House work like a scientific and modern home.

The girls are well prepared for penny-pinching and feather dusting with home economics courses, and the Practice House enables them to put their studies into actual experience, thereby benefiting by solving practical home problems. Their shining kitchen is an example of their efficiency; as Miss Ada Johnson, the home economics instructor, helpfully repeats, "Clear as you go!" Another real evidence of their ability is exemplified by their weekly formal dinners, which are included in the budget.

In the morning the girls rush down the stairs to fry eggs for breakfast, then to vacuum the living room, which is really the date room. They work hard all day as all good housekeepers should, but they do have plenty of fun, and we suspect, plenty of good food. The girls who are enjoying the Practice House life are Clarice Hoover, Hortense Futrelle, Agnes Wood, and Margaret McNeill.



MISS ADA JOHNSON

Home Management House

Future Teachers' Club

Eloise Cecil, President; Kathryn Cross, Vice President; Billie Frazier, Secretary.

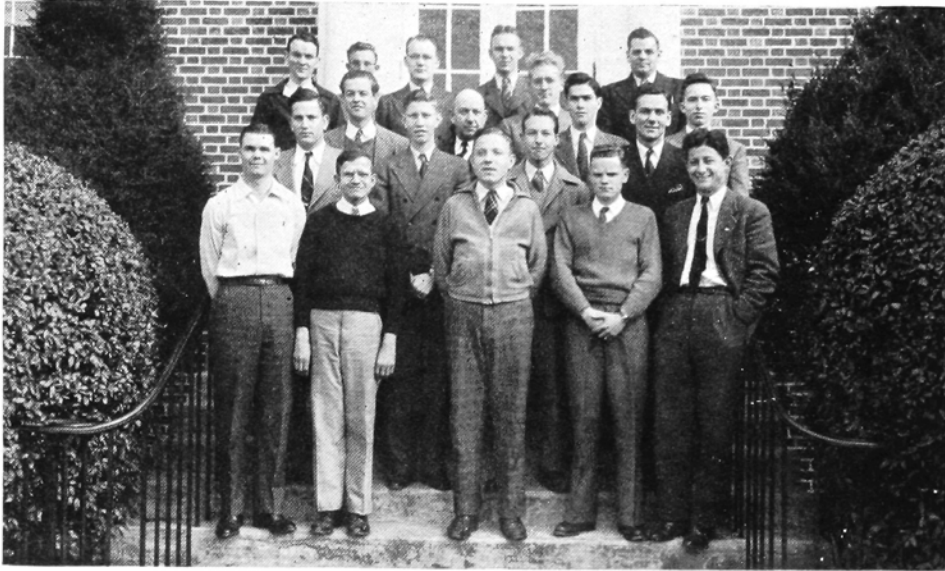


Aycock, Meredith, Lindley (Dean), Cross, Hipps, Carter.

Religious Council

Ministerial Association

N. L. Oliver, President; John Aycock, Vice President; Glenn Lanier, Secretary & Treasurer;
Joe Taylor, Chaplain.



Agnes Ward, President; Sarah King, Vice President; Clarice Hoover, Secretary; Hortense Futrelle,
Treasurer.

Modern Priscilla Club

Cheer Leaders

Isenhour, Aldridge, Flowers, Koontz,



Kathryn Cross, President; Ailene Kirkman, Vice President; Norma Brooks, Secretary.

Choir



OFFICERS

Don Payne, President; Hilda Smith, Vice President; Betty Smith, Secretary and Treasurer;
John Taylor, Publicity Chairman.

Christian Fellowship



MEREDITH, CROSS, SELF, RASH, HINSHAW, COE, PARKER, MOORE

The Lighted Lamp, the only honor society on the campus, was organized in 1935 as a joint movement of the faculty and students to promote higher standards among the student body. Membership in The Lighted Lamp is the most coveted honor a student may receive. Students are nominated by the members and elected by the faculty. Requirements for membership are based on scholarship, character, service, and leadership. This honor can come to a student only in his junior or senior year. His scholastic average must drop no lower than a "B" during the five preceding semesters, and in his courses he must have no conditions or failures. Membership in The Lighted Lamp is an honor few achieve, and those who maintain such standards in character, leadership, service and scholarship deserve this honor.

The Lighted Lamp



Top row: Eloise Cecil, Clyde Collins, Willis Gupton. **Second row:** Garnett Hinshaw, Norwood Jones, John Perry. **Third row:** Ray Swink, Dorothy Lee Usher, Sue Woodruff.
Not shown in picture: Martha Howell.

Who's Who



COLLINS
INSCORE

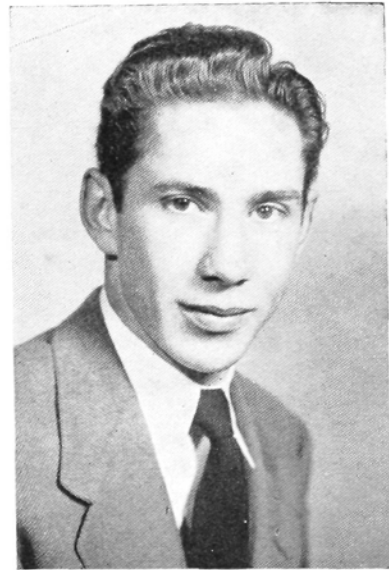
CROSS
PAQUET

HINSHAW
PRICE

The Zenith Staff



DOROTHY LEE USHER
Editor



WILLIS GUPTON
Business Manager



PAQUET
HIPPS

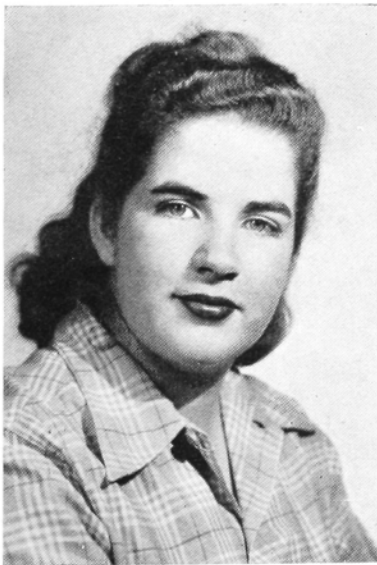
ALDRIDGE
ISENHOUR

CARLBERG
KNOX

CARTER
KOONTZ

CROSS
USHER

Hi-Po Staff



DAMARIS TAUSSIG
Editor



JAMES AUMAN
Business Manager

• **ATHLETICS**



HARRISON GYMNASIUM



HINSHAW



CHAPMAN



YARBOROUGH

ATHLETIC COUNCIL

DR. G. I. HUMPHREYS
DR. C. R. HINSHAW
MR. C. V. YOW

INTRAMURAL COMMITTEE

MR. N. P. YARBOROUGH
MISS JO CHAPMAN
MR. C. V. YOW
MR. J. H. ALLRED
DR. E. O. CUMMINGS

The most obvious function of the Athletic Council is its direct supervision over all athletic contests. Less noticeable, but far more important, is its task of extending the athletic program to every student by means of physical educational classes and the intramural sports. In order to promote a better intramural program, the Intramural Committee was formed last year. Because of the war and the ensuing manpower shortage many of the intercollegiate sports have been set aside for the duration; thus have intramurals become even more important in the extra-curricular life of the college student. It is the Intramural Committee that guides this phase of campus life.

ATHLETIC ASSOCIATION



BILL HOYLE
Manager

The Purple and White started the year as a green group of boys, inexperienced, but not lacking in natural ability and scrap. The season's opener saw High Point down Sedgefield Headquarters Squadron 39-37. Taking defeat at the hands of Catawba they next beat Guilford 39-33. The quint then ran up against experienced opposition that proved too much for them in the remaining games of the first semester. Among these teams was the smooth working B.T.C. No. 10 five, one of the best service teams in the South.

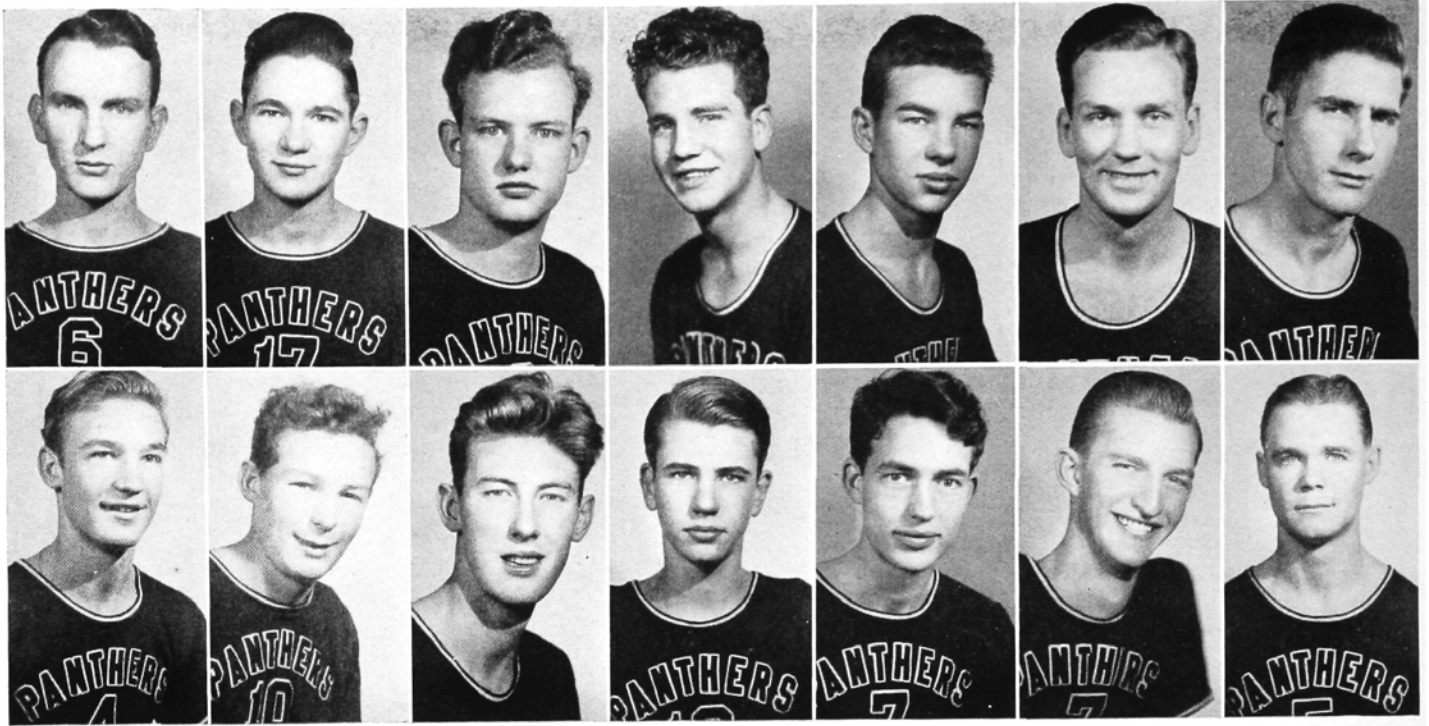
Revived by the return of Nostrand and Porter, two of last year's aces of the hardwood, the Panthers came back to smash Catawba 52-33. Inspired by this win, the Yowmen defeated Appalachian twice, only to bow to the basketball team of Guilford College 30-32. The Mountaineers then journeyed to High Point to take more defeats at the hands of the Panthers.

Seeking revenge for defeat, playing in Harrison Gym, the Purple and White downed Guilford 59-50. The season ended up in four more wins for the Yowmen; two from Morris Field and two from Charlotte "Y".

Towering George Nostrand, six foot nine-inch pivot man, was a mainstay in the Panthers' wins. Bob Porter and Jack Foster were starting guards backed up by reserves, "Satchelfoot" Patterson and "Fleetfeet" Morris. Taylor, fast, high-scoring forward racked up many points for the Panthers, while Dawson, smooth floor man, held down the other forward position.

Coach Yow's comment on this year, "We did all right", sums up the year.

ATHLETIC ASSOCIATION



Top row: Auman, Dawson, Foster, Freeman, Hutchinson, Jamieson, Kappelmann.

Bottom row: Marshall, Morris, Nostrand, Patterson, Perry, Porter, Taylor.

INDIVIDUAL POINTS

Taylor.....	221	Perry.....	43
Nostrand.....	196	Morris.....	37
Dawson.....	131	Auman.....	22
Foster.....	112	Hutchinson.....	12
Porter.....	91	Jamieson.....	12
Kappleman.....	60	Marshall.....	9
Patterson.....	51	Green.....	8
		Freeman.....	0

Girls Varsity Basketball Team

Nancy Watson, Enola Sue Flowers,
Nellie Gray Inscore, Nancy Isenhour,
Ethel Norton, Nell Price, Virginia
Cohen, Dorothy Koontz, Jeraleen York,
Rachael Smith, Mary Ann Hedgecock,
Joyce Davis, Betty Deane Knox.



Girls Varsity Volleyball Team

Jo Ingram, Mary Sue Piper, Mary Ann
Hedgecock, Johnsie Farlow, Betty
Deane Knox, Betty Welch, Nancy
Isenhour, Virginia Cohen, Nancy Wat-
son, Ethel Norton, Mildred Allen,
Edna Hoggard, Phyllis McGhee, Ruby
Parker, Dorothy Koontz.



Girls Varsity Soccer Team

Enola Sue Flowers, Nell Price, Nancy
Isenhour, Dorothy Koontz, Virginia
Cohen, Nancy Watson, Rachael Smith,
Jeraleen York, Mary Ann Hedgecock,
Joyce Davis.





WOMEN'S ATHLETIC ASSOCIATION

ENOLA SUE FLOWERS.....President
NANCY ISENHOUR.....Vice President
MILDRED ALLEN.....Secretary
DOROTHY KOONTZ.....Treasurer

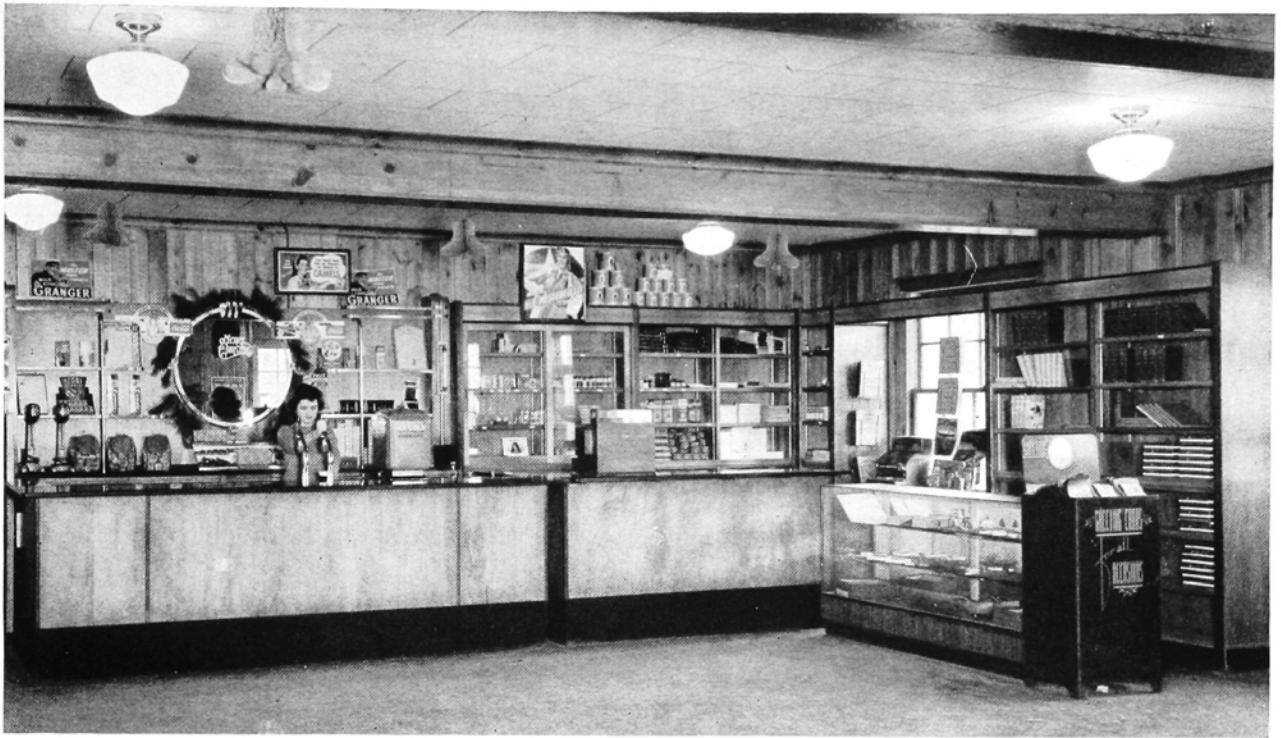
Blanche White, Lillie Mae Moore, Virginia Cohen, Garnett Hinshaw, Nancy Watson, Ethel Norton, Kathryn Cross, Betty Welch, Johnsie Farlow, Ava Neil Taylor, Mildred Allen, Dorothy Koontz, Ola Mae Patterson, Nellie Grey Inscore, Mary Ann Hedgecock, Betty Deane Knox, Dina Taylor, Edna Hoggard, Enola Sue Flowers, Ruby Parker, Virginia Hudgins, Dorothy Lee Usher, Nancy Isenhour.





326th College Training Detachment
1st Lt. Milton Wayne, Commanding Officer

• **FEATURES**



COLLEGE SODA FOUNTAIN



Miss Enola Sue Flowers

SENIOR SPONSOR



Miss Arlene Steelman

JUNIOR SPONSOR



Miss Maxine Aldridge

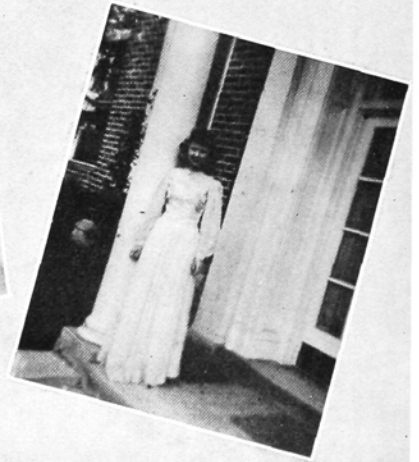
SOPHOMORE SPONSOR

(Miss High Point College selected by A. Varga, artist, Esquire Magazine)



Miss Bettye Sue Sebastian

FRESHMAN SPONSOR



MAY DAY - 1944

ENOLA SUE FLOWERS, Queen



MARSHALS

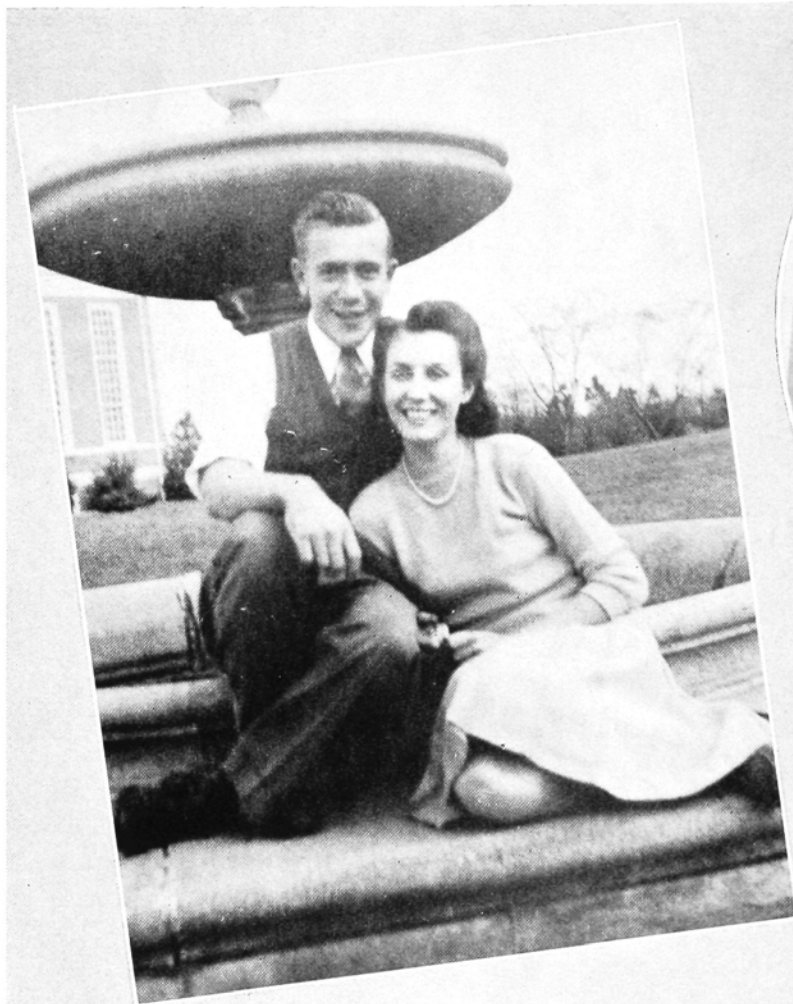
KATHRYN CROSS
MARY ANN COE

JOHN CARTER
Chief

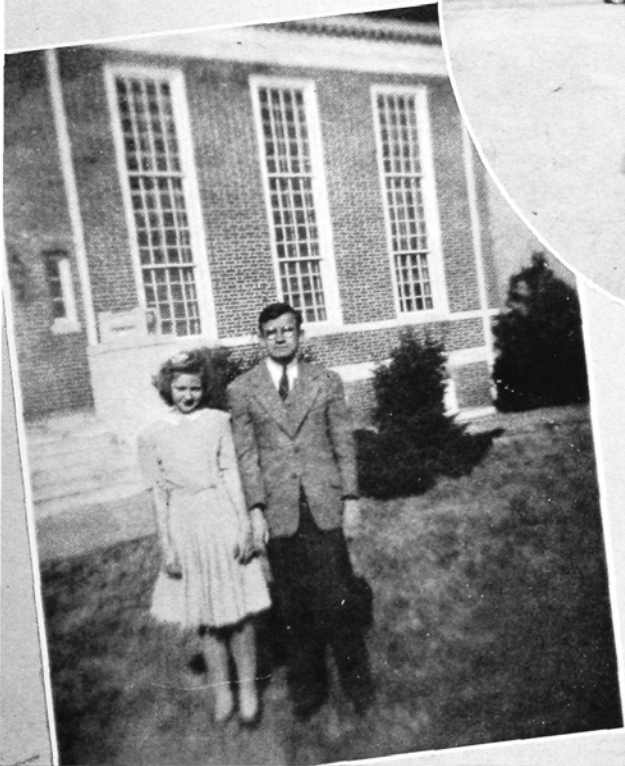
MARGUERITE KOONTZ

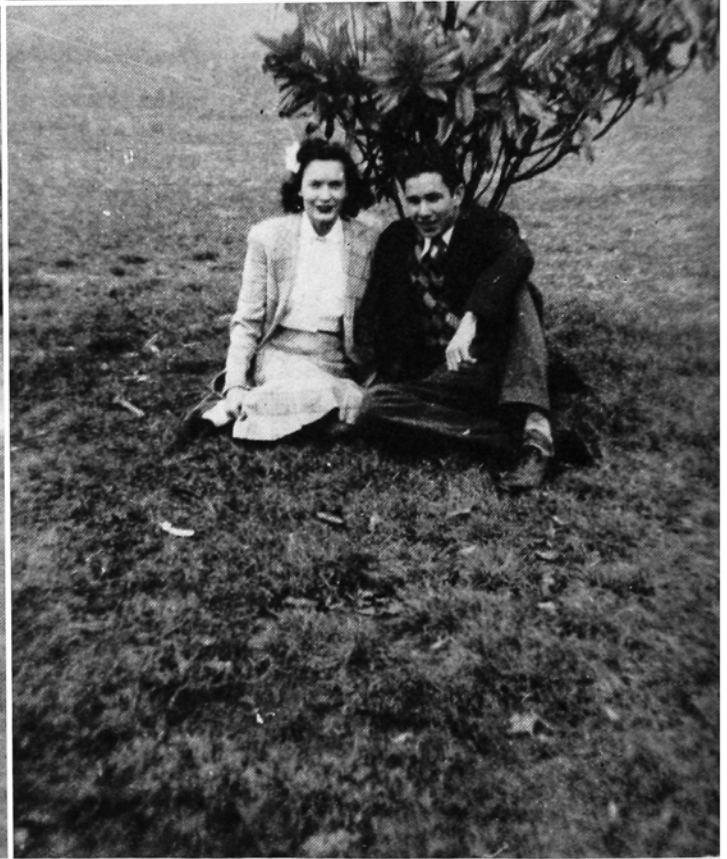
HELEN MEREDITH
NANCY ISENHOUR

CUPID'S



COURT





(Upper Left)
BEST ALL-AROUND
DOROTHY LEE USHER
WILLIS GUPTON

(Lower Left)
MOST ATHLETIC
ETHEL NORTON
RAYMOND FREEMAN

(Upper Right)
MOST INTELLECTUAL
GARNETT HINSHAW
EUGENE STALEY

(Lower Right)
MOST POPULAR
BONNIE LEWIS
WILLIS GUPTON



(Upper Left)
BEST LOOKING
BONNIE LEWIS
WILLIS GUPTON

(Upper Right)
BEST SPORTS
ENOLA SUE FLOWERS
WILLIS GUPTON

(Lower Left)
MOST FRIENDLY
NANCY WATSON
WILLIS GUPTON

(Lower Right)
MOST ORIGINAL
DOROTHY LEE USHER
CLYDE COLLINS

A Typical Week in

On Sundays we all dress and primp
Then off to church like a flying blimp.
Mondays back to class we head
And study till we're nearly dead.
Tuesdays you can always detect
We go swimming and look like heck.



a College Dormitory

Now Wednesday is the bumming day
So off to town we go and stay.
Thursdays, sun baths we often take
We lie and burn till at last we bake.
On Friday most of us are happy
For home we go to mammy and pappy.
The remaining ones on Saturday date
Around the campus till the hour is late.



STUDENTS

Welcome to Gibson's

781 N. Main — 104 N. Main — 329 N. Main

COMPLIMENTS OF
BELK-STEVENS CO.

HIGH POINT, N. C.

COMPLIMENTS OF

W. A. DAVIS MILLING CO.

**ELLIOTT
FLORAL COMPANY**

Phone 2586
FLOWERS BY WIRE

COMPLIMENTS OF

Efird's Department Store

HIGH POINT, N. C.

SHACKELFORD'S

MEN'S WEAR

CUSTOM TAILORS

COMPLIMENTS OF

ASIA RESTAURANT

COMPLIMENTS OF

DELUXE DINER

JARRETT'S STATIONERY CO.

BOOKS, STATIONERY AND
OFFICE SUPPLIES

COMPLIMENTS OF

YOW'S FUNERAL HOME

HIGH POINT, NORTH CAROLINA

COMPLIMENTS OF

RICHARDSON DEPT. STORE

S. Main High Point, N. C.

COMPLIMENTS OF

N. H. SILVER, INC.

129 S. Main High Point, N. C.

COMPLIMENTS OF

H. P. HARDWARE CO.

COMPLIMENTS OF

HIGH POINT BARBER SHOP

300 N. Main High Point, N. C.

CENTRAL SERVICE STATION

"STOP FOR SUPER SERVICE"

247 S. Main St.

SEE

GUPTON'S, INC.

FOR

"BEST IN ADVERTISING AND SALESMANSHIP"

Willis Gupton, Prop.



KOONCE FUNERAL HOME
INCORPORATED
PHONE 4545

COMPLIMENTS OF
PRINCESS CAFE

COMPLIMENTS OF
J. C. PENNEY COMPANY
HIGH POINT, N. C.

COMPLIMENTS OF
**CHARLES
DEPARTMENT STORE**
Ready-to-Wear and Fashion Merchandise

COMPLIMENTS OF
**CENTRAL ICE DELIVERY
COMPANY**
Phone 4507 312 W. Broad St.

COMPLIMENTS OF
CECIL'S DRUG CO.

COMPLIMENTS OF
S. H. KRESS
5-10-25c STORE
High Point, North Carolina

Welcome to
THE SHERATON HOTEL
"NOTED FOR GOOD FOOD"
W. G. MALONE, Manager

**GUILFORD GENERAL
HOSPITAL**

MANN'S
Cut-Rate Drug Stores
High Point, N. C. Kannapolis, N. C.
Greensboro, N. C. Reidsville, N. C.
Thomasville, N. C. Burlington, N. C.

North State Telephone Co.
SERVING HIGH POINT AND VICINITY

COMPLIMENTS OF
DIXIE HOT SHOPPE

COMPLIMENTS OF
RUBY'S JEWELRY STORE
159 South Main

CLOVER BRAND DAIRIES
INCORPORATED
PASTEURIZED PRODUCTS
Phone 4553
Milk Butter Ice Cream

COMPLIMENTS OF
BETTY LOU SHOPPE
High Point's Leading Ladies' Store
111 South Main St.

COMPLIMENTS OF
ROSE FURNITURE CO.



Drink



in Bottles

Coca-Cola Bottling Company
of High Point

BEESON HARDWARE COMPANY

•
YOUR SPORTING GOODS
HEADQUARTERS

McLeod's Esso Service

STANDARD DEALER

★

E. V. McLEOD, Prop.

Phone 3932 South Wren & Green St.
HIGH POINT, N. C.

WRIGHT-CLINE SHOP, INC.

•
122—308 N. Main

N. L. GARNER, AGENCY

PERFECT **E**VERY WAY
PROTECTION **E**VERY DAY
AYS

226 Professional Bldg. Phone 4648

★ ★

OCCIDENTAL LIFE INSURANCE CO.

COMPLIMENTS OF

BURRUS HOSPITAL

HIGH POINT, N. C.

LET'S WIN THE WAR—
AND MAKE IT A WAR WORTH WINNING!

DUKE POWER COMPANY

CONGRATULATIONS!

In the lifetime of the Class of '44 Electric Service in the Piedmont Carolinas has greatly modified Industry, Commerce, Agriculture and the Home. Business initiative and scientific farming give promise of even greater opportunities in the productive years ahead.

May each of you find a worthy place in the enterprising world of tomorrow!

GENERAL OFFICE

CHARLOTTE, N. C.





HIGH POINT COLLEGE

HIGH POINT, N. C.

ALL OUT FOR DEFENSE

COURSES GEARED TO WARTIME AND POSTWAR RECONSTRUCTION

For Further Information Apply to
PRESIDENT OR SECRETARY OF ADMISSION

FOR QUALITY DAIRY
PRODUCTS

Lindale
DAIRY^{CORP}

"It's Our Pleasure to Serve You"

*

WEST LEXINGTON AVE.

HIGH POINT, N. C.

THE good will of men, women, and children who contact this organization casually or in business constitutes the principal asset which maintains it as a service institution. Our sincere desire to serve our many patrons well and unselfishly is widely recognized and our ability to do this is established.

•
**HIGH POINT,
THOMASVILLE & DENTON
RAILROAD CO.**

•
"Nothing But Service To Sell"



COMPLIMENTS OF
CLOVER HILL FARM DAIRY

COMPLIMENTS OF
CANNON-FETZER CO.
HIGH POINT, N. C.

COMPLIMENTS OF
**SOUTHERN MOTOR
COMPANY**

COMPLIMENTS OF
INDUSTRIAL FINANCE CO.
HIGH POINT, NORTH CAROLINA

**HEDGECOCK LUMBER
COMPANY**

1215 Ward St. Phones 4006, 44232

COMPLIMENTS OF
**ANDERSON WEST END
DRUG STORE**
1550 English Street

**Lewis & Holmes Motor Freight
Corporation**
High Point, N. C. Atlanta, Ga.
"SERVING THE SOUTHEASTERN STATES"
High Point Office Phone 2879

NEW SERVICE LAUNDRY
"THE COLLEGE CLEANERS"

WILLIAMS FLOWER SHOP

FLOWERS FOR ALL OCCASIONS
Phone 2807
114 East High High Point, N. C.

A FRIEND

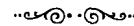
A Friend

SHOP AND SAVE AT
SEARS, ROEBUCK
High Point

COMPLIMENTS OF
**NORTH CAROLINA
THEATRES**

CENTER BROADHURST
PARAMOUNT RIALTO

Quality Watches, Diamonds, Jewelry,
Silverware, Clocks, Gifts, Luggage



Wagger Jewelry Company
ELWOOD HOTEL CORNER HIGH POINT, N. C.



THRIFT IS ESSENTIAL FOR INTELLIGENT CITIZENSHIP
HIGH POINT SAVINGS & TRUST CO.

SERVING SINCE 1905

MEMBER FEDERAL DEPOSIT INSURANCE CORPORATION

J. W. SECHREST & SON

Since 1897

*

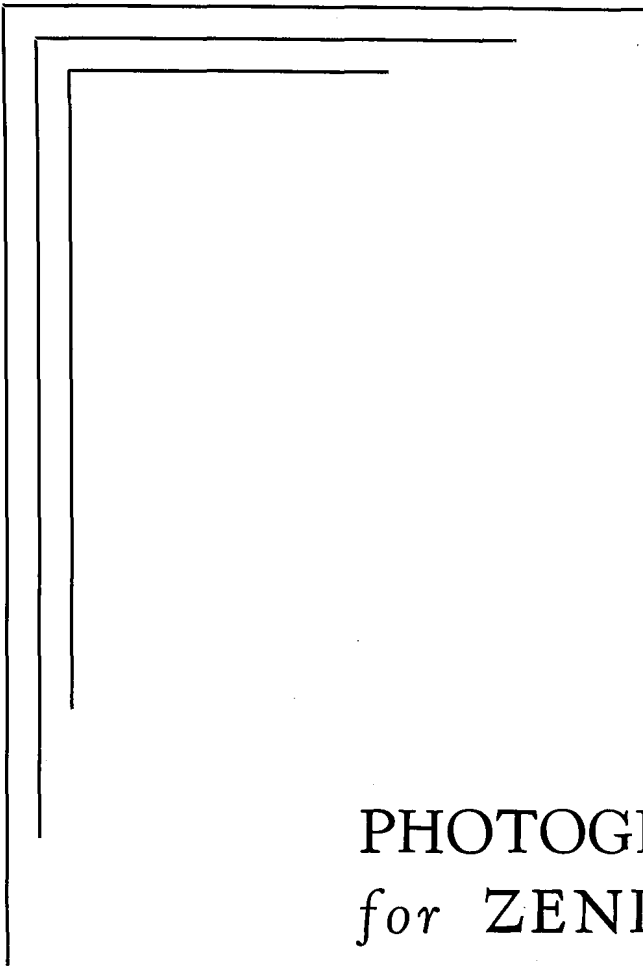
AMBULANCE SERVICE

DIAL 3349

STUDENTS' HEADQUARTERS
HIGH POINT COLLEGE BOOK STORE

BOOKS — SCHOOL SUPPLIES — REFRESHMENTS

OFFICIAL COLLEGE RINGS AND JEWELRY



PHOTOGRAPHY
for ZENITH *by*
H. Theo. Lewis
Asheboro, N. C.

FINANCIAL STATEMENT

'44 ZENITH

OF

HIGH POINT COLLEGE

Expenditures:

Photography	\$ 200.00
Transportation for Editor and Business Manager	25.00
Bribery to Specific Sources	20.00
Reimbursements to Business Manager:	
Shoe Soles	5.00
Tip to Ration Board	5.00
Aspirins, dope and Champagne to relieve mental strain	25.00
Bribery to Faculty members for allowing Business Manager to cut classes	50.00
A Neat Corsage (Four Roses)	10.00
Printing	"My Gracious" (?)
Engravings	600.00
TOTAL	\$2300.00

Income:

Student Subscriptions	\$ 300.00
H.P.C. Allowance	"Oh my, again"
Bribery from Students to omit certain masterpieces	50.00
Income from Advertising	600.00
A very generous Faculty donation25
TOTAL	\$1500.00

To find the net results, please subtract the total income from the total expenditure. Here's hoping that you can subtract; I can't, at least I don't have the nerve.

Truthfully submitted,

WILLIS GUPTON

Business Manager



It's been a
real pleasure!

The personnel
and representatives
of the
Charlotte Engraving Co.



Hall PRINTING COMPANY
LETTERPRESS • COMPLETE PRINTING SERVICE • LITHOGRAPHY
HIGH POINT, NORTH CAROLINA

